

Wildlife & Asset Protection: Advanced Materials for High Performance

EVERY CONNECTION COUNTS





Luis Puigcerver

Global Product Manager
Wildlife & Asset Protection

lpuigcer@te.com



Tiago Costa

Americas Product Manager
Wildlife & Asset Protection

tiago.costa@te.com

TE.com/WAP

CAN YOU GUESS WHAT IS THE EXPECTED LIFETIME FOR TE WILDLIFE & ASSET PROTECTION PRODUCTS?

40 YEARS

WILDLIFE & ASSET PROTECTION MATERIALS

What makes a product durable/long-lasting?



- Excellent tracking resistance
- Extreme UV and thermal protection
- Flame resistance

COMPREHENSIVE PRODUCT PORTFOLIO TO SERVE YOUR GRID'S NEEDS

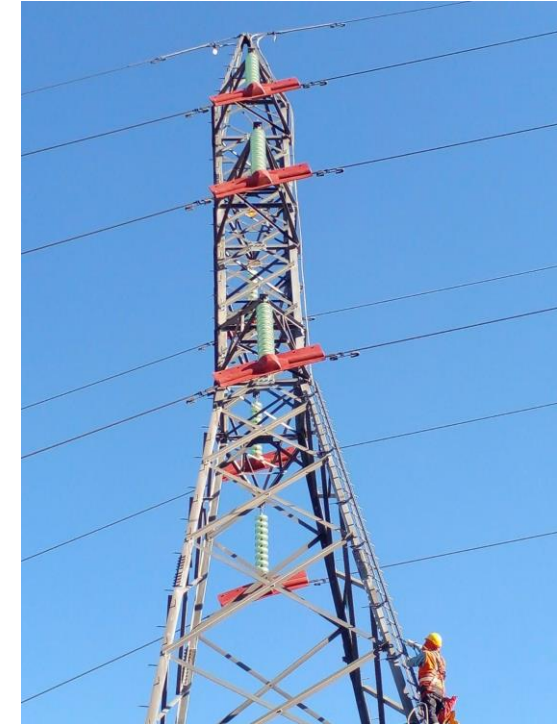
Overhead Distribution



Substation

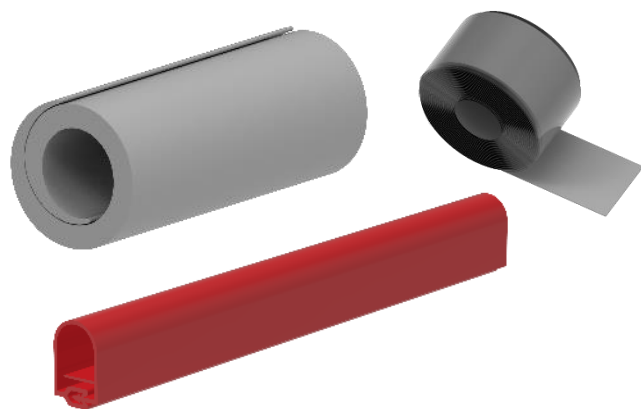


Transmission Lines



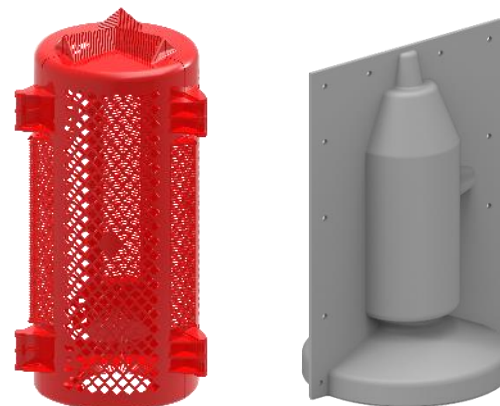
OUR SOLUTION FOR YOU

**We offer cost-effective and easy-to-install solutions
To bird, animal and weather-related outages.**



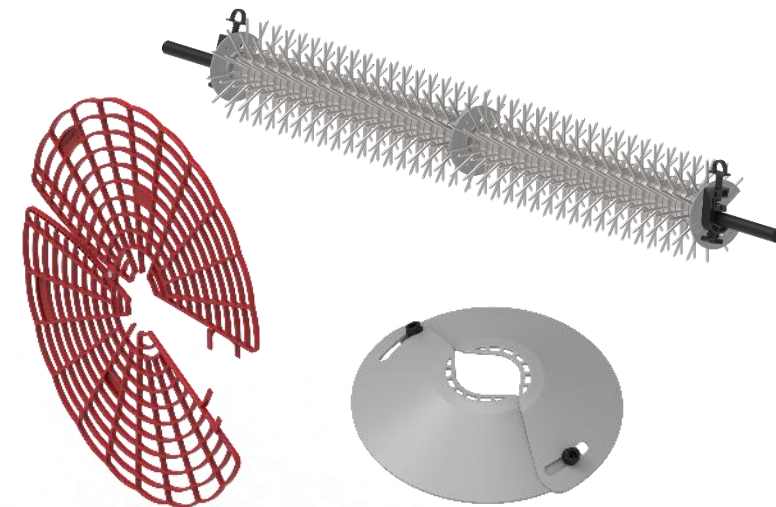
CONDUCTOR INSULATION

- Versatile conductor insulation
- No disconnection required
- Large range of conductor sizes



BUSHING AND CONNECTOR COVERS

- Insolation and Insulation of bushings and connections
- Superior visual and thermal inspection



ANIMAL GUARDS

- Perfect for equipment isolation
- Installable on energized assets
- Range taking

RAPID RESPONSE APPROACH

Saving you money for the long run...



Material Science Experts

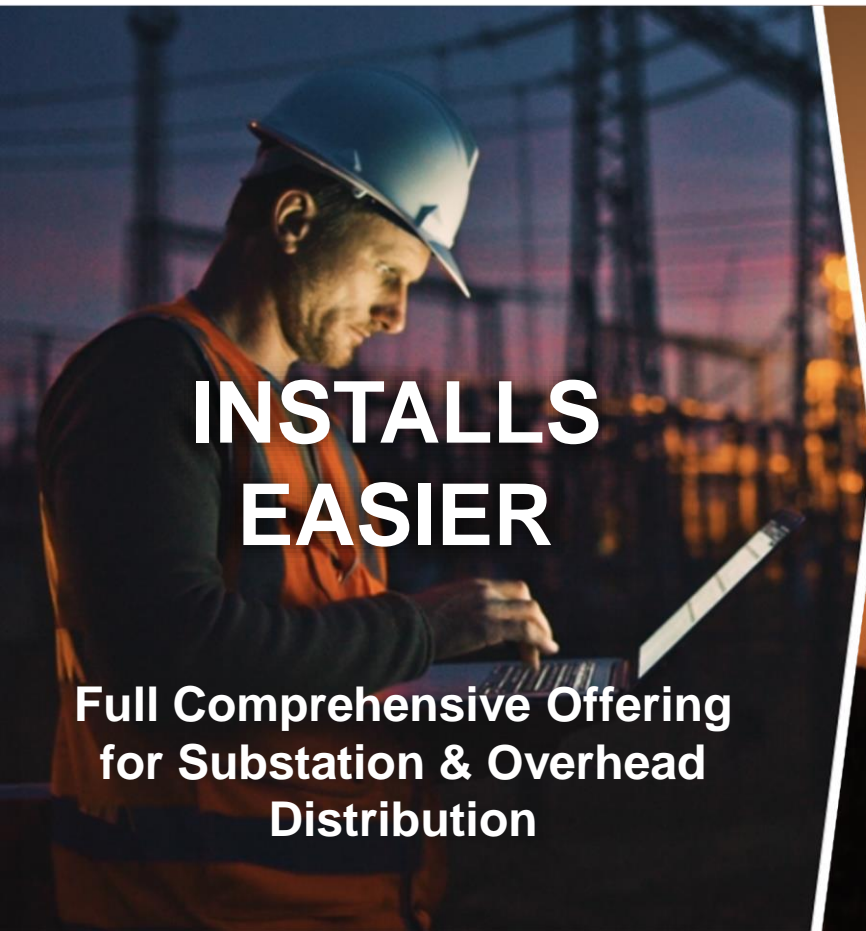


Fully-Integrated Manufacturing



Take-off Service

FOR MAXIMUM GRID RELIABILITY

A worker in a blue hard hat and orange safety vest is looking at a tablet device. In the background, there are power lines and a substation structure.

**INSTALLS
EASIER**

Full Comprehensive Offering
for Substation & Overhead
Distribution

Two workers in hard hats are silhouetted against a bright orange sunset sky. A wind turbine is visible in the background.

**PERFORMS
SMARTER**

Materials formulated
for purpose

A night view of a city skyline with many lit-up skyscrapers and a highway in the foreground.

**RUNS
LONGER**

Extensive track record to
ensure 40-year life

**EVERY
CONNECTION
COUNTS**

