

Maximizing Profitability and Reliability of your Solar projects

Saving you money in the long run

Tori Wyne – Product Manager

Matthew Schuster – Project Manager

EVERY CONNECTION COUNTS





Tori Wyne

Product Manager

tori.wyne@te.com



Matthew Schuster

Renewables Sr. Project Manager

matthew.schuster@te.com

TE.com/solar

With TE's Solar Solutions, Your Solar Projects

A worker wearing a blue hard hat and an orange safety vest is looking at a laptop. The background shows a blurred industrial or construction site at dusk.

INSTALLS EASIER

Easy to install solutions
reduce labor time and
costs

Two workers in hard hats are silhouetted against a bright orange sunset sky. A wind turbine is visible in the background.

PERFORMS SMARTER

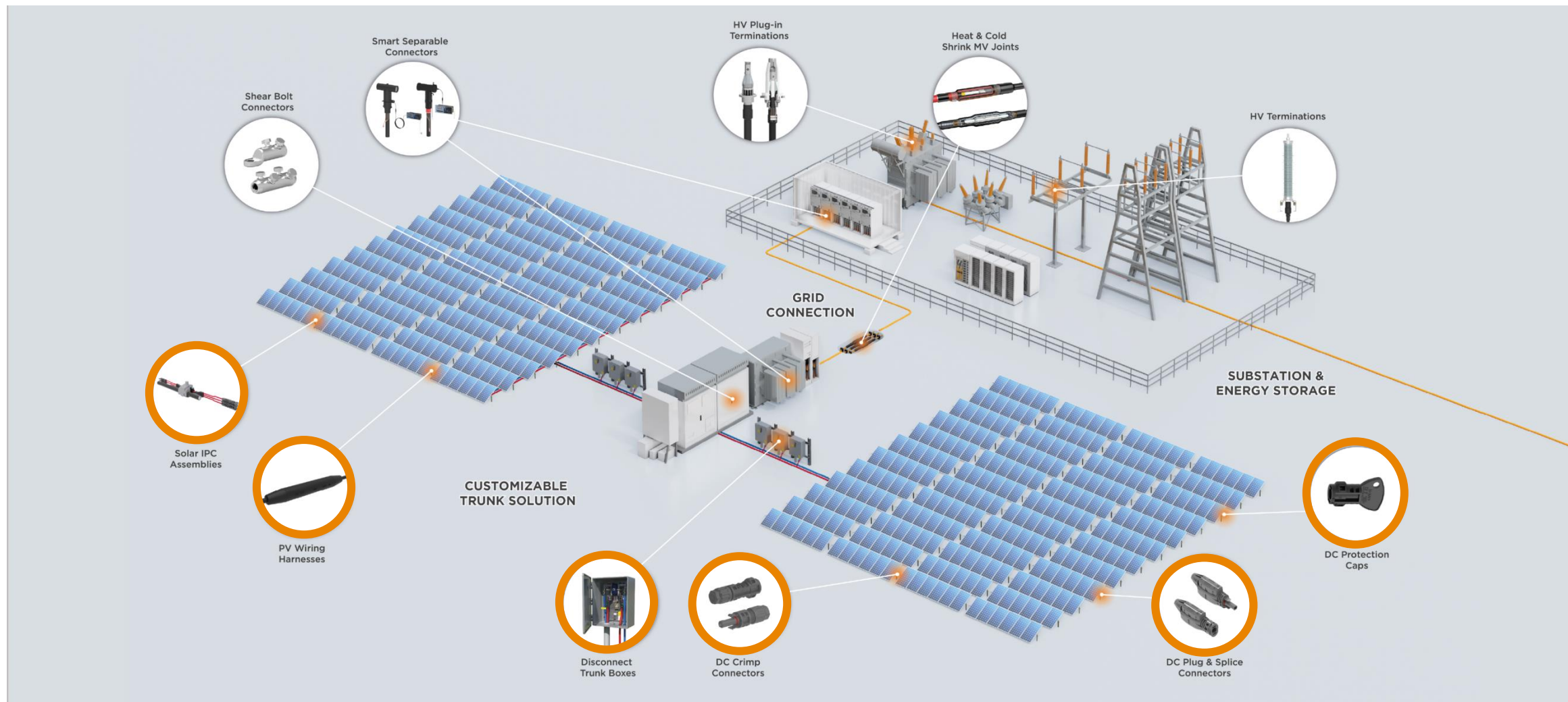
High performance of
components even in the
harshest environments

A night-time view of a city skyline with many illuminated skyscrapers and lights reflecting on a body of water in the foreground.

RUNS LONGER

Products made to last
with little to
no maintenance required

Our Solar Solutions For Maximum Reliability

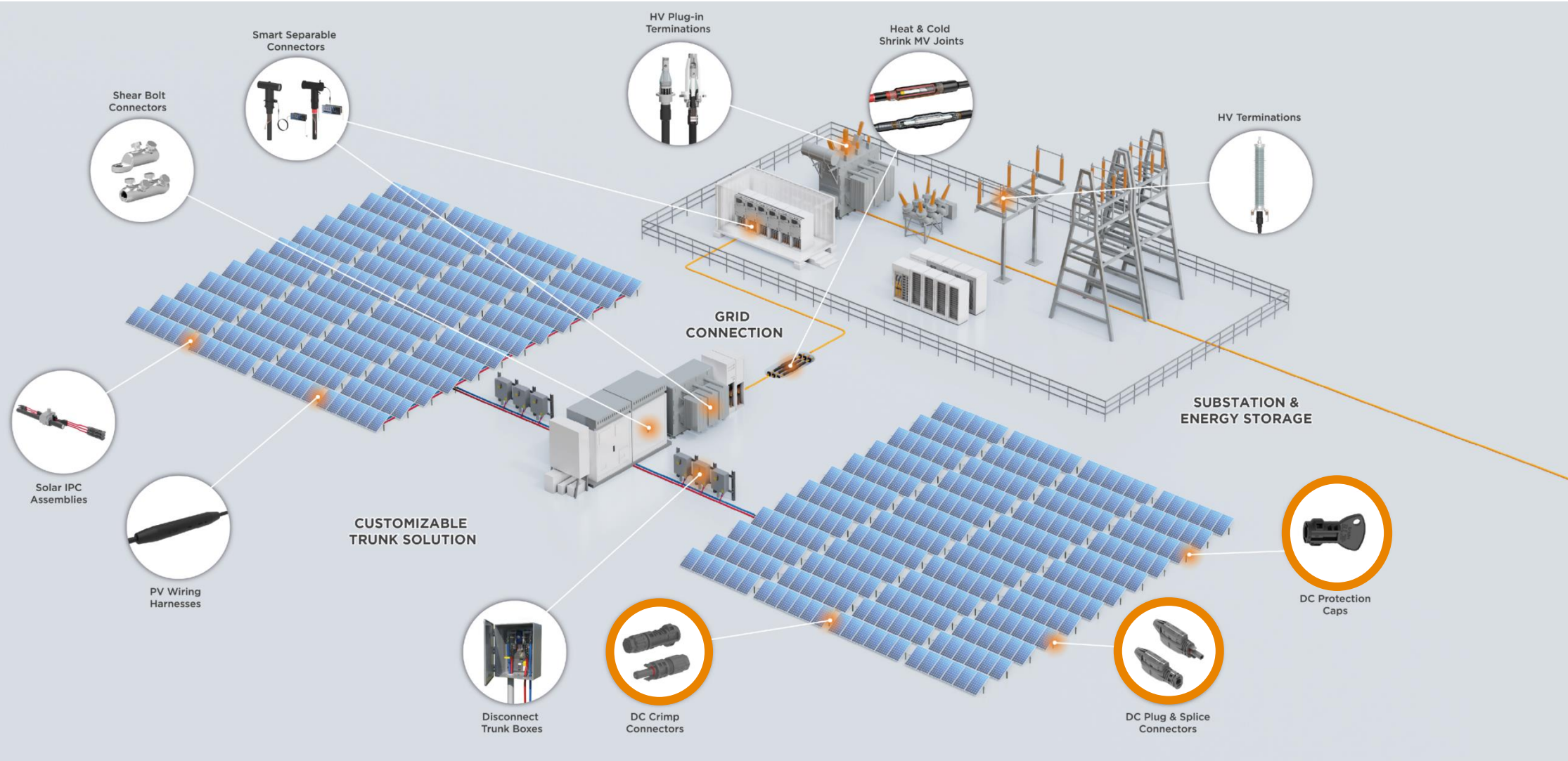


Solar Connectors

EVERY CONNECTION COUNTS

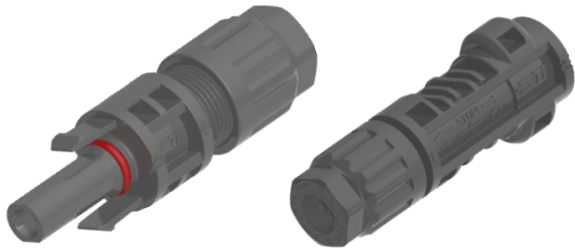


Solar Connectors



Solar Connectors

PV4-S



- Application: Junction Boxes, harnesses and jumpers
- **IP68** rated (1 m / 24 hours)
- **NEC 2008/2011** compliant
- Low contact resistance ($\leq 0.3\text{m}\Omega$)
- Compatible with **MC4** hand tools

SOLARLOK 2.0



- **80% faster** to install (**15 secs**)
- Single-piece design
- CE marking

SAFE TE



- Protect disconnected PV connectors
- **IP68** rated (1 m / 24 hours)
- Easy to install
- Easy to label for circuit identification
- Protects wire harness O-ring



UL6703 / IEC62852

An hourglass is centered in the background, with dark sand in the top bulb and light sand in the bottom bulb. The background is a dark blue gradient.

**How much faster are
our Solarlok 2.0 connectors
to install?**

15%

50%

80%

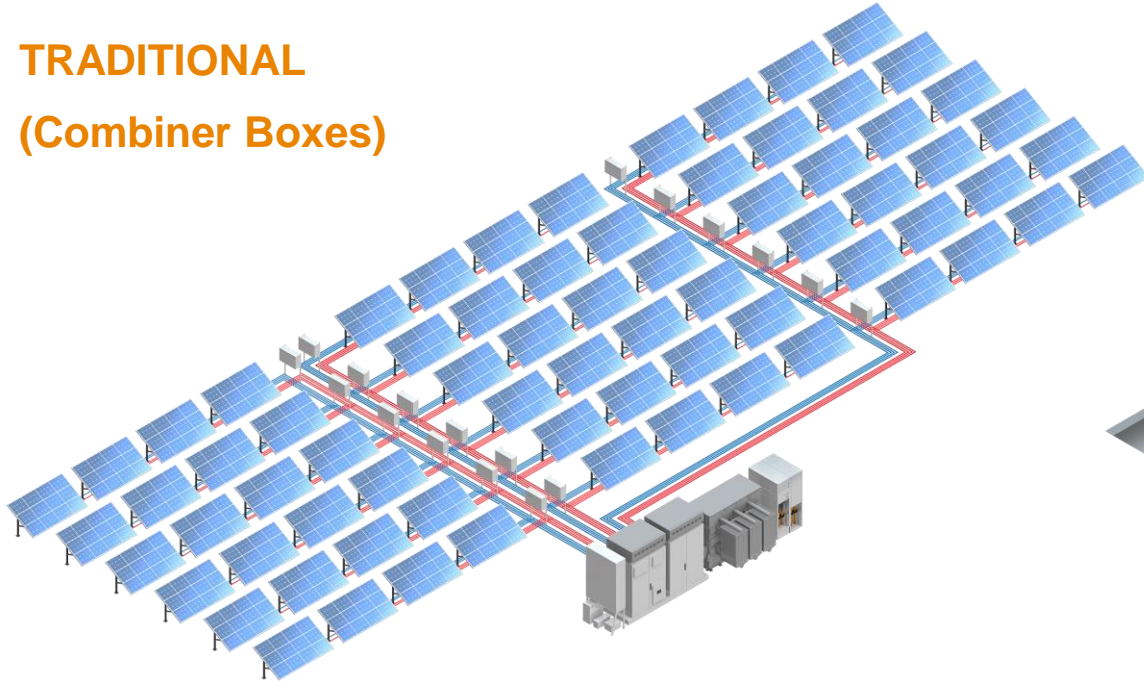
Customizable Trunk Solution CTS

EVERY CONNECTION COUNTS



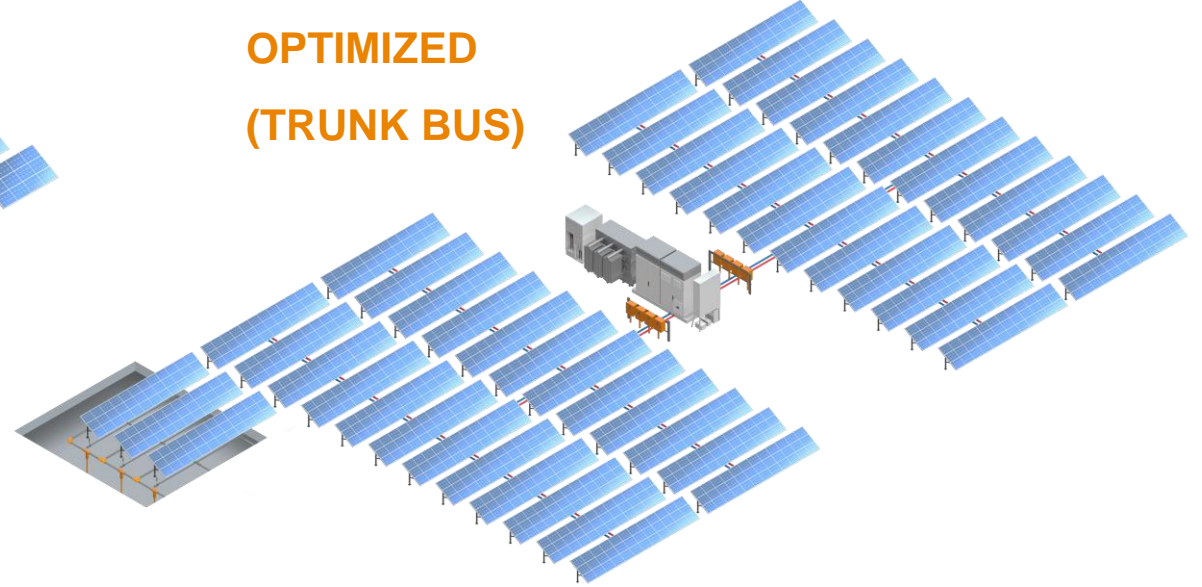
EBoS - Combiner Box vs. Trunk Bus

TRADITIONAL (Combiner Boxes)



- Underground - Trenching required
- Large lengths of copper string cable
- Combiner boxes has risk of over heating
- High maintenance required

OPTIMIZED (TRUNK BUS)



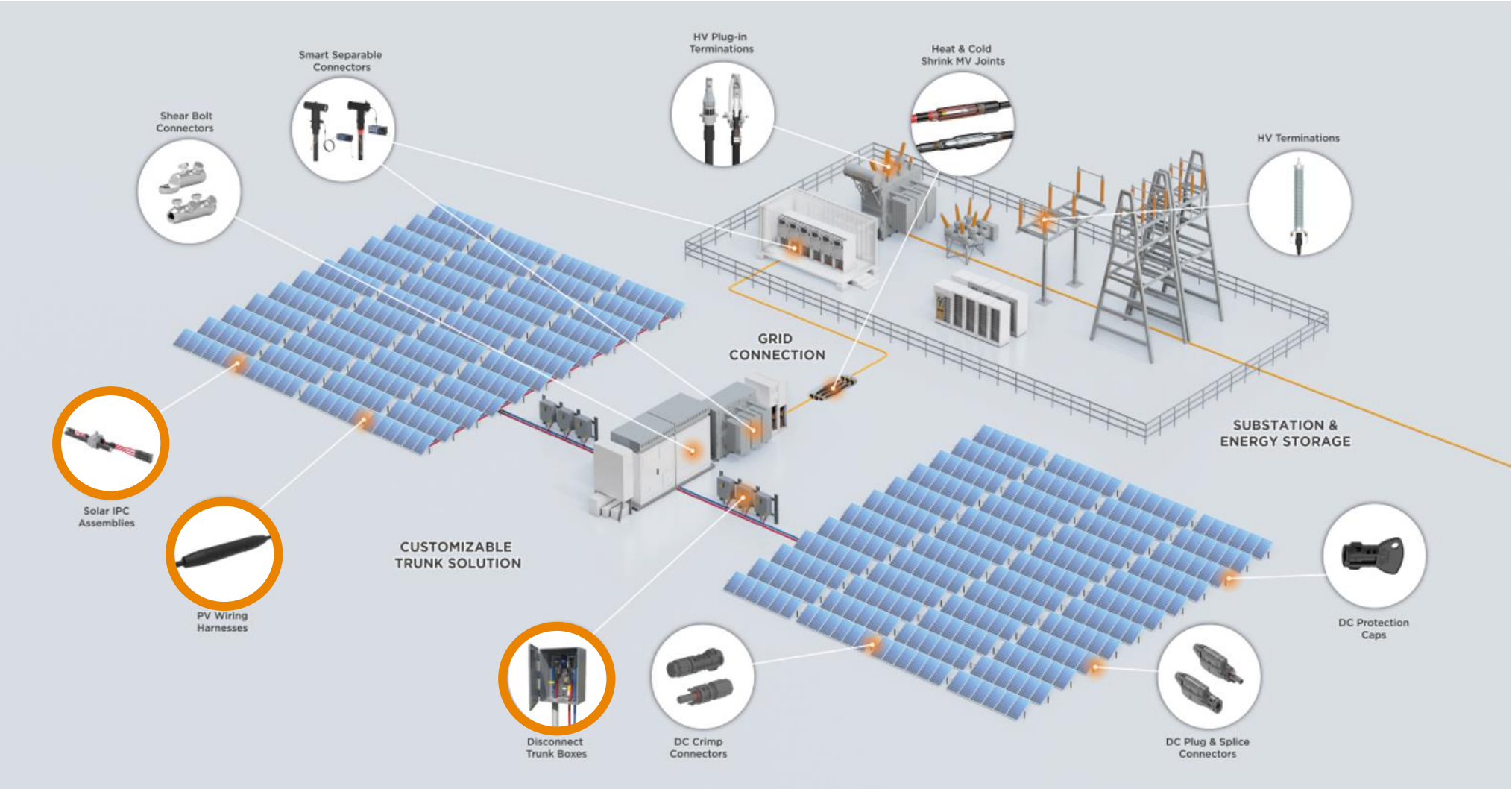
- Above ground
- **3x less** copper string cables required
- Over molded fused harnesses instead of combiner boxes
- Little or no maintenance

Up to **40%** savings
in material costs

**What are the material cost savings
in a Trunk Bus solution
vs combiner box?**

40% 50% 70%

Our CTS Portfolio For Maximum Efficiency



CTS Portfolio



SOLAR INSULATION PIERCING CONNECTORS (SIPC)



- Pre-assembled multi-tap, shear bolt technology, halogen-free, and UV-resistant
- No insulation cutback and high-quality sealing
- Wide range of cables **500-1000 kCMIL**
- **UL 9703, UL 486A-B**
- OP. TEMP. -40°C (-40°F) to 55°C (131°F)
- Flame retardant - **V0** classification

PV HARNESSES



- **Plug-n-play** design – no need for combiner boxes
- **6AWG-12AWG** cable sizes
- Fuse protection fusible: **4A up to 60A**
- Designed for **1500V** system with **2000V** rated cable
- **UL 9703**
- Made and tested to perform for **+30 years**
- 100% electrical testing
- Complete compatibility with panel manufacturers

LOAD DISCONNECT BOXES (LBDs)



- Protect low voltage systems from surges
- Less cable required
- **UL 1741**
- Disconnect switch rated for **1500V** and **400A & 500A**
- **NEMA 4X** rated
- Enclosure with **F1 Rating – UV Resistant**
- Up to 4 inputs of 500 kCMIL
- Input/output conductors – 500 to 1000 kCMIL

Get Maximum Efficiency of Your Project



EXPERT TEAMS + VALUE-ADDED SUPPORT

- Engineering design consulting (drawings / calculations / optimization recommendations)
- Project Management support throughout project lifecycle
- Customized in-field training
- Post-implementation assistance

Customizable Trunk Solution



High Quality
+
Built To Last

High Performance
Even In The Toughest
Environments



Efficiency
+
Reliability

Compatible With Most
Mounting Structures



Fast Installation
+
Low Maintenance

Ease of Use With Plug &
Play Components




CONTACT

Tori Wyne
Product Manager
+1 757 234 5047
tori.wyne@te.com



CONTACT

Matthew Schuster
Project/Account Manager
+1 919 857 7253
matthew.schuster@te.com

A large-scale photograph of a solar farm in a desert. Rows of solar panels stretch across the landscape towards mountains in the distance under a clear blue sky.

Ready to maximize the
profitability and
reliability
of your solar project?

EVERY CONNECTION COUNTS

