



# REFLOW CAPABLE UNIVERSAL MATE-N-LOK CONNECTORS

## DESIGN FLEXIBILITY FOR STREAMLINED PCB ASSEMBLY PROCESSES

### APPLICATIONS

- Appliances
- HVAC Equipment
- Industrial Machinery
- Power Supplies
- Security Systems
- Elevator / Escalator

### ELECTRICAL

- 12A / 600 VAC Max
- 5000 VAC Dielectric Withstanding Voltage

### MECHANICAL

- 6.35 mm (0.250") Centerline
- 13.5N (3 lb) Max Initial Mating Force

### THERMAL

- Operating Temperature  
-40°C to +105°C

### MATERIALS

- High Temperature Thermoplastic (UL 94 V-0)
- Copper Alloy, Tin Plated

Reflow capable Universal MATE-N-LOK connectors were developed to allow printed circuit board (PCB) manufacturers to adopt reflow soldering assembly processes without sacrificing design flexibility. The thermoplastic housing is engineered to both withstand high reflow soldering temperatures and to mate with standard Universal MATE-N-LOK connectors. This combination of features allows for easy transition from traditional PCB assembly to full reflow soldering processes.

These connectors also have additional features to help improve assembly efficiency, including an ergonomic low insertion force (LIF) design, locking for more reliable mating, and polarization features to prevent mis-mating.

### BENEFITS

- High temperature thermoplastic housing designed to support reflow soldering processes
- Compatible with standard Universal MATE-N-LOK connectors
- Reduced mis-mating with polarized housing
- Ergonomic assembly with low insertion force (LIF) design
- Locking feature reduces risk of terminal back-out
- Pin and socket style contacts available

### SPECIFICATIONS

- Product Specification: [108-106568](#)
- Application Specification: [114-133093](#)
- UL Certificate Number: 20170407-E28476
- UL Report Reference Number: E28476-19760715

# REFLOW CAPABLE UNIVERSAL MATE-N-LOK CONNECTORS

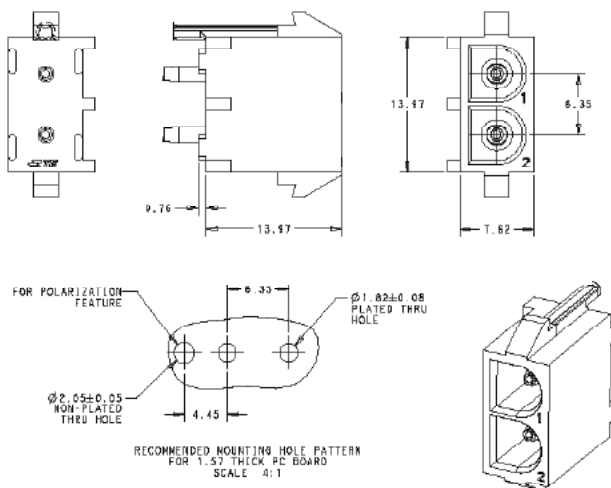
## PRODUCT SELECTION INFORMATION

Part Number	Contact Type*	Row Configuration	Number of Positions	Color*	Mating Plug PN	Contact PN
<a href="#">1-2213752-1</a>	Pin	1x2, vertical	2	Black	350777-1	350874-3
<a href="#">2213753-2</a>	Socket	1x3, vertical	3	White	350766-1	350873-3
<a href="#">1-2213752-3</a>	Pin	1x4, vertical	4	Black	350779-1	350874-3
<a href="#">2213753-4</a>	Socket	1x5, vertical	5	White	350809-1	350873-3
<a href="#">2213752-5</a>	Pin	1x6, vertical	6	White	640581-1	350874-3
<a href="#">2213756-1</a>	Socket	3x2, vertical	6	White	350715-1	350873-3
<a href="#">2213755-2</a>	Pin	3x3, vertical	9	White	350720-1	350874-3
<a href="#">1-2213755-3</a>	Pin	3x4, vertical	12	Black	350735-1	350874-3
<a href="#">2213756-4</a>	Socket	3x5, vertical	15	White	350736-1	350873-3

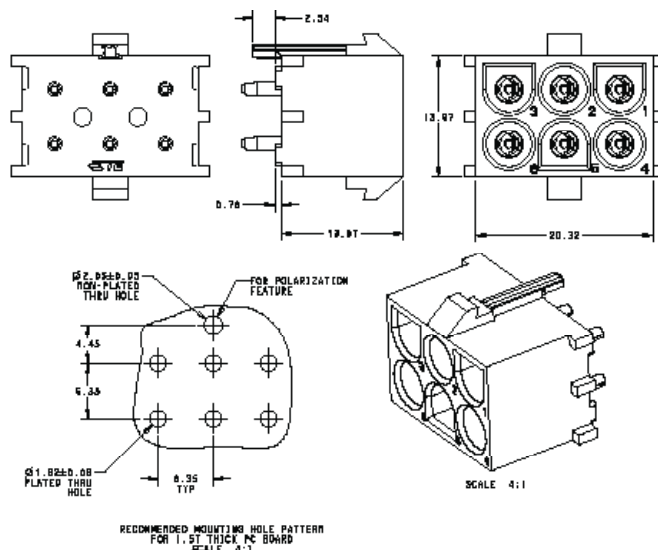
\* All positions are available in both pin and socket contacts and black / white color. Red and blue colors are available upon request.

## DIMENSIONS

Single Row Header 2213752-1



Triple Row Header 2213756-1



te.com

© 2022 TE Connectivity. All Rights Reserved.

TE, TE Connectivity, TE connectivity (logo), MATE-N-LOK and EVERY CONNECTION COUNTS are trademarks owned or licensed by the TE Connectivity Ltd. family of companies. All other logos, products and/or company names referred to herein might be trademarks of their respective owners.

While TE has made every reasonable effort to ensure the accuracy of the information in this brochure, TE does not guarantee that it is error-free, nor does TE make any other representation, warranty or guarantee that the information is accurate, correct, reliable or current. TE reserves the right to make any adjustments to the information contained herein at any time without notice. TE expressly disclaims all implied warranties regarding the information contained herein, including, but not limited to, any implied warranties of merchantability or fitness for a particular purpose. The dimensions in this catalog are for reference purposes only and are subject to change without notice. Specifications are subject to change without notice. Consult TE for the latest dimensions and design specifications.

08/22