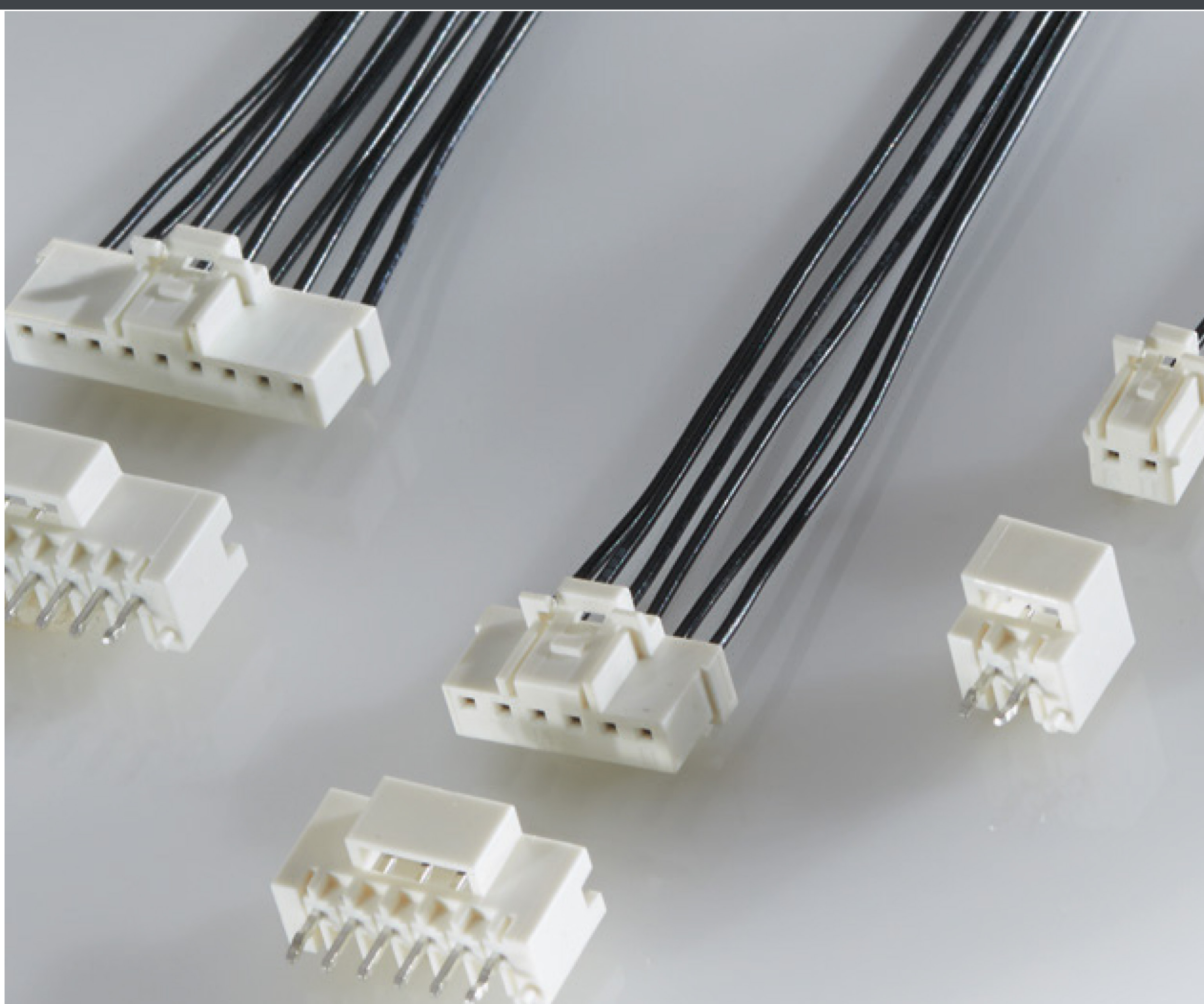


ROBUST & RELIABLE SIGNAL CONNECTORS

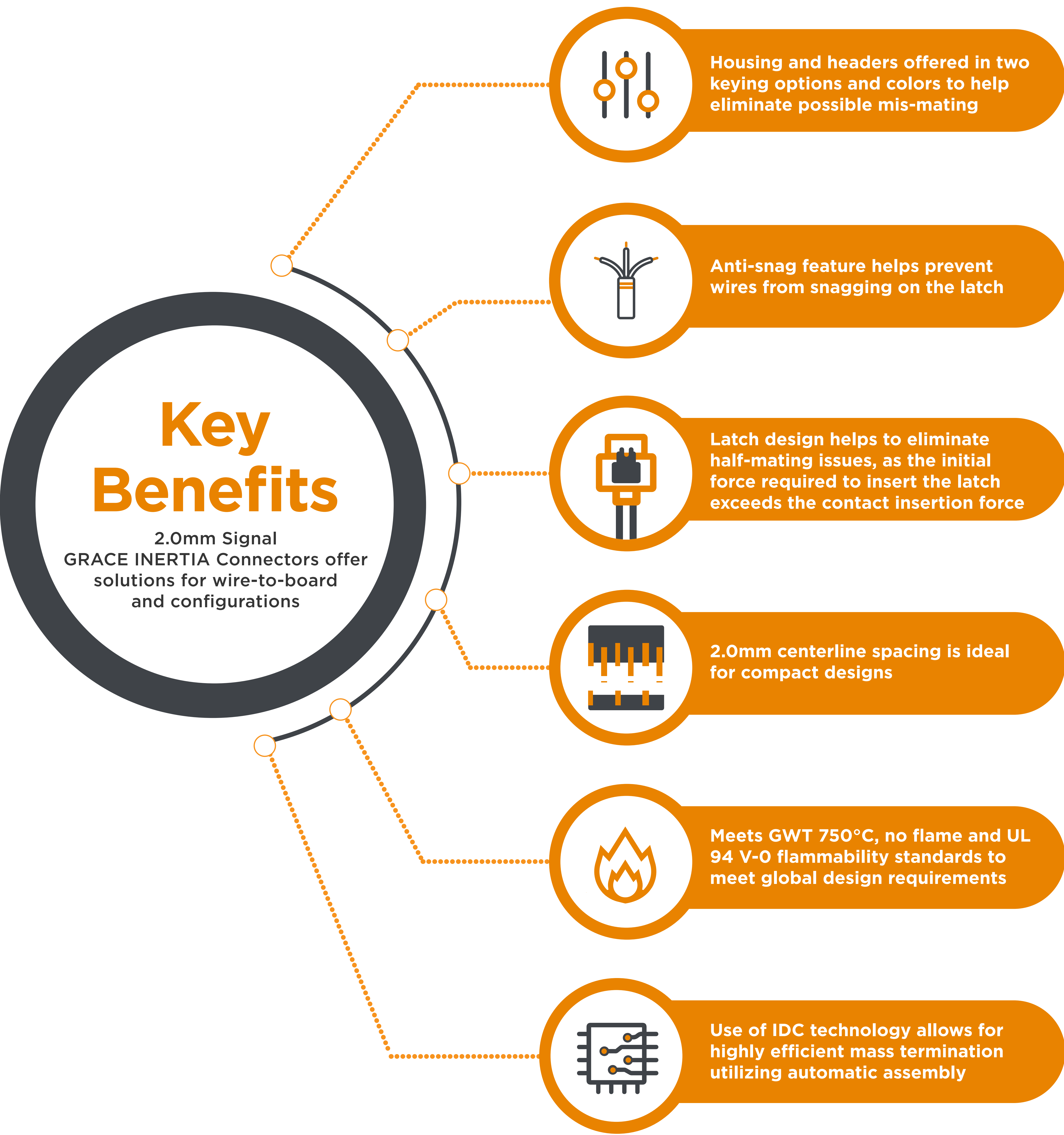


Minimize costly, time consuming errors with our 2.0mm Signal GRACE INERTIA (SGI) Connectors

Human errors in the assembly process can be costly and time consuming. Our engineering experts designed the new 2mm Signal GRACE INERTIA Connector Series with features and materials to help reduce potential human errors during the assembly process. Our design helps eliminate improper mating, ensure proper insertion, and help prevent wires from snagging.

Leveraging our expertise on insulation displacement connector (IDC) technology, our new signal connector family was designed to help achieve higher efficiency and assembly costs savings by allowing for mass termination using automatic assembly equipment.

SMT and TH header options will help customers to realize full PCB board automatic manufacturing.



LEARN MORE ON [TE.COM/APPLIANCES](https://www.te.com/appliances)

