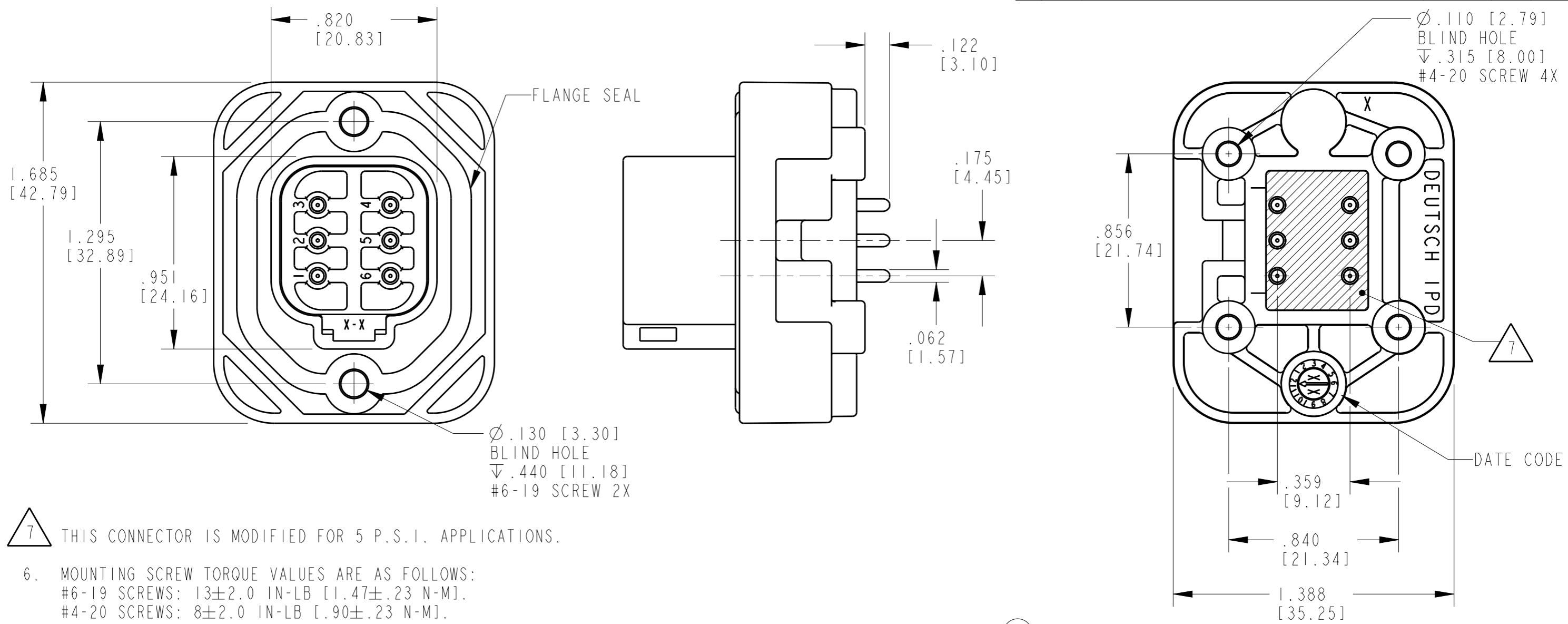


THIS DRAWING IS UNPUBLISHED  
 RELEASED FOR PUBLICATION 2015  
 © COPYRIGHT 2015 BY TE CONNECTIVITY ALL RIGHTS RESERVED.

| LOC | DIST | REVISIONS   |                             |           |       |
|-----|------|-------------|-----------------------------|-----------|-------|
| P   | LTR  | DESCRIPTION | DATE                        | DWN       | APVD  |
| -   | -    | NC          | NEW RELEASE PER E.O. P19476 | 13APR2007 | - RDR |
| -   | -    | A           | REVISED PER ECO-15-005844   | 16APR2015 | PV DM |



- 7 THIS CONNECTOR IS MODIFIED FOR 5 P.S.I. APPLICATIONS.
- 6. MOUNTING SCREW TORQUE VALUES ARE AS FOLLOWS:  
 #6-19 SCREWS: 13±2.0 IN-LB [1.47±.23 N-M].  
 #4-20 SCREWS: 8±2.0 IN-LB [.90±.23 N-M].  
 VALUES VALID FOR PLASTITE 48 SCREWS ONLY.
- 5. RECOMMENDED MOUNTING SCREWS (NOT INCLUDED): CAMCAR PLASTITE 48.
- 4. THIS RECEPTACLE MATES WITH DT06-6S-XXXX PLUG (XXXX = ALL MODIFICATIONS.)

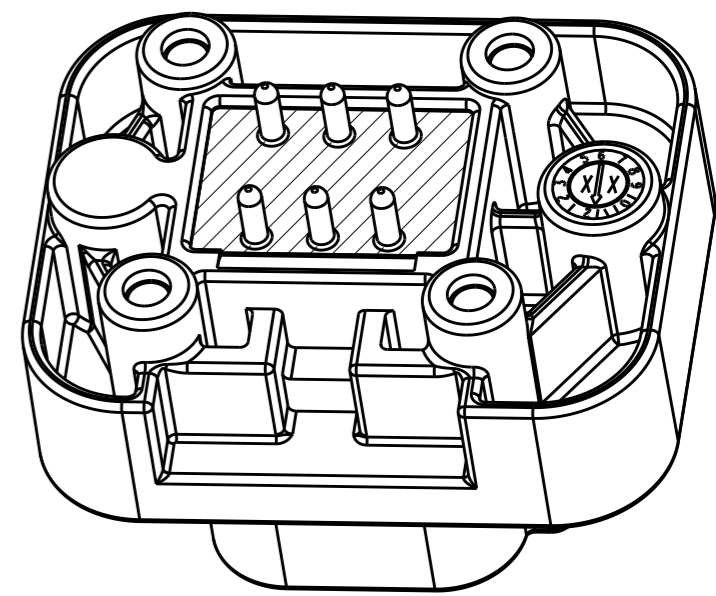
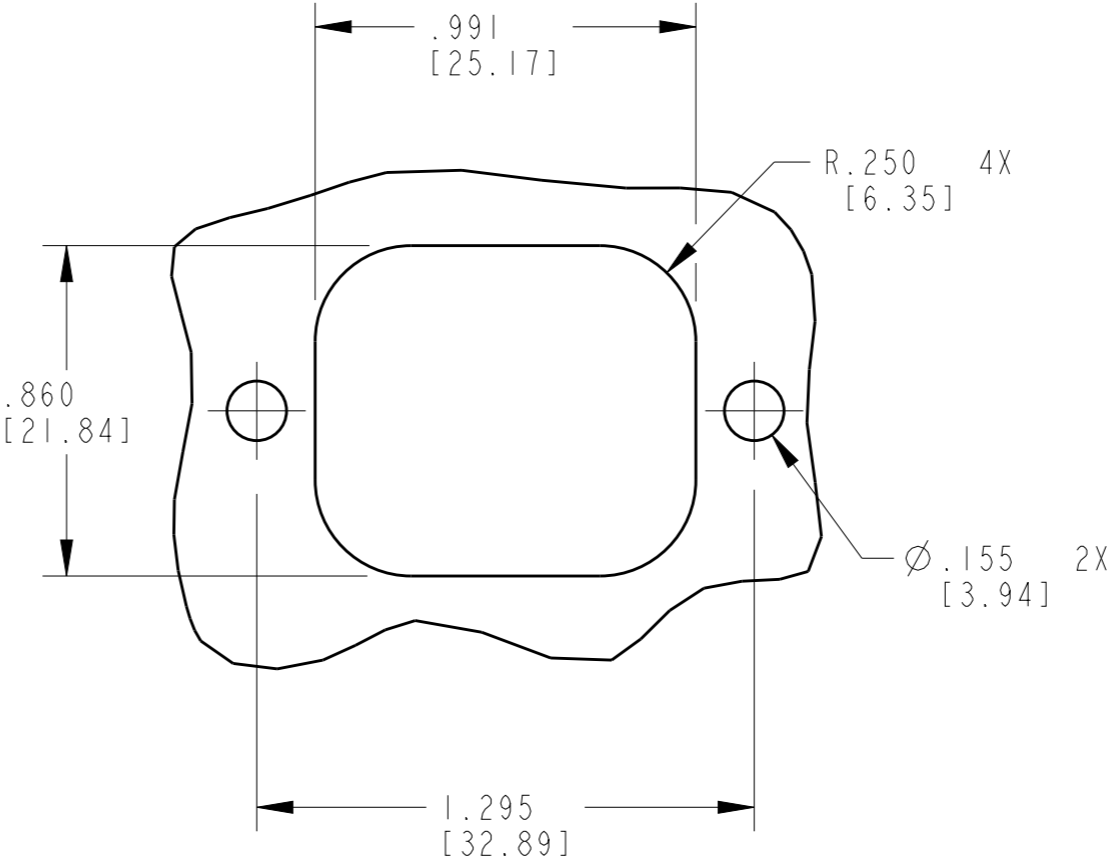
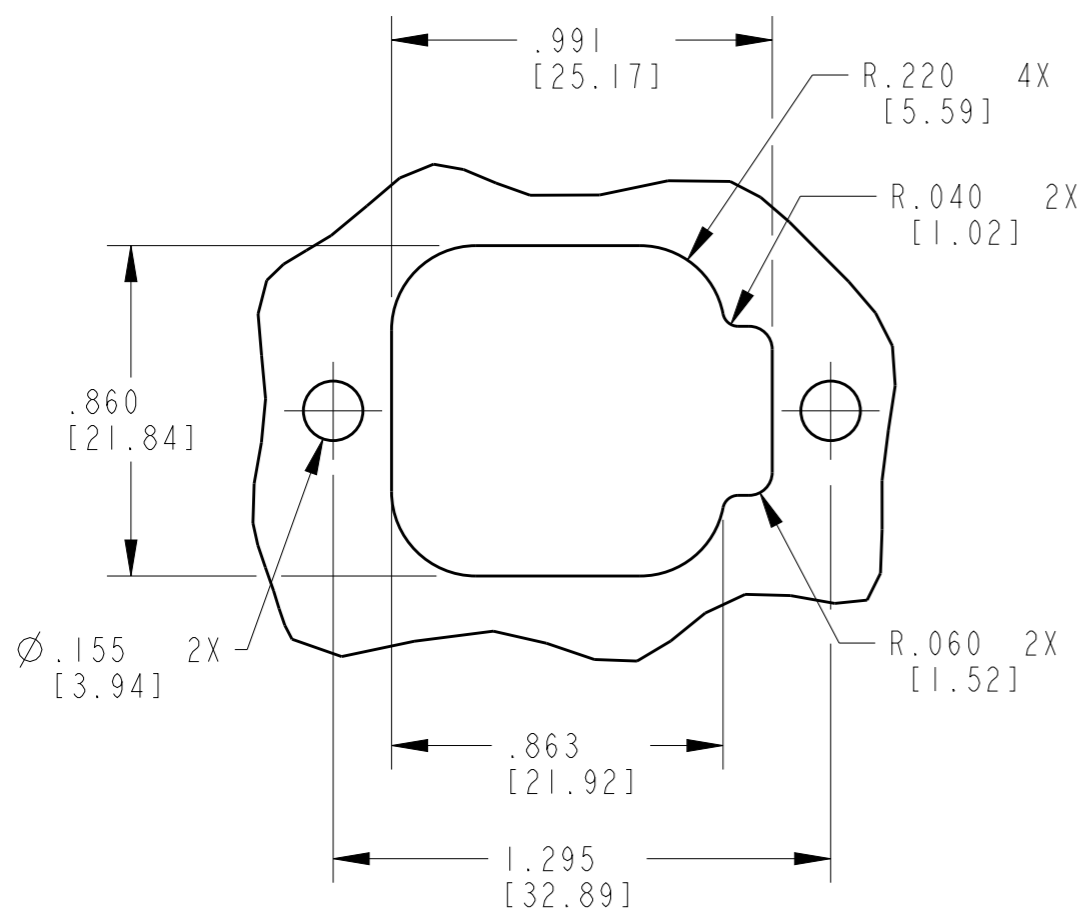
|              |                   |
|--------------|-------------------|
| TCPN         | ALIAS PART NUMBER |
| DT15-6P-GP01 | DT15-6P-GP01      |

- 3. CONTACT PLATING- MATING SIDE: GOLD; PCB SIDE: TIN
- 2. MATERIAL:  
 SHELL; PA GF-30 (GRAY)  
 SEAL: SILICONE (ORANGE - RED).  
 PIN CONTACT: COPPER ALLOY
- 1. DIMENSION TOLERANCE: ±.025 [.64]  
 PANEL CUTOUT ±.010 [.25].  
 PIN LOCATION: ±.005 [.13]  
 MOUNTING HOLE LOCATION: ±.010 [.13]

|   |  |                          |  |  |  |
|---|--|--------------------------|--|--|--|
| THIS DRAWING IS A CONTROLLED DOCUMENT.  |  | DWN A. MALAGON 15FEB2007 |  | TE Connectivity                                    |  |
| DIMENSIONS: INCHES [mm]   |  | CHK B. BYFORD 13MAR2007  |  |  |  |
| TOLERANCES UNLESS OTHERWISE SPECIFIED:  |  | APVD S. BEARD 19MAR2007  |  | NAME PCB MOUNT RECEPTACLE 6-PIN GP01 MOD DT SERIES |  |
| 0 PLC ±-<br>1 PLC ±-<br>2 PLC ±-<br>3 PLC ±-<br>4 PLC ±-<br>ANGLES ±0° 30' 0" |  | PRODUCT SPEC 108-151009  |  | SIZE A3  |  |
| MATERIAL  |  | APPLICATION SPEC -       |  | CAGE CODE 4AFU8                                    |  |
| FINISH -  |  | WEIGHT 21.8 g            |  | DRAWING NO ©-DT15-6P-GP01                          |  |
| Customer Drawing  |  | SCALE 2:1                |  | RESTRICTED TO -                                    |  |
|   |  | SHEET 1 OF 2             |  | REV A  |  |

THIS DRAWING IS UNPUBLISHED  
 RELEASED FOR PUBLICATION 2015  
 © COPYRIGHT 2015 BY TE CONNECTIVITY ALL RIGHTS RESERVED.

| LOC | DIST | REVISIONS   |      |     |      |
|-----|------|-------------|------|-----|------|
| P   | LTR  | DESCRIPTION | DATE | DWN | APVD |
| -   | -    | SEE SHEET 1 | -    | -   | -    |
|     |      |             |      |     |      |
|     |      |             |      |     |      |



**RECOMMENDED PANEL CUTOUTS**

|  |            |                                |  |                    |                              |       |    |       |    |       |    |        |            |                            |               |  |
|--|------------|--------------------------------|--|--------------------|------------------------------|-------|----|-------|----|-------|----|--------|------------|----------------------------|---------------|--|
| THIS DRAWING IS A CONTROLLED DOCUMENT.   |            | DWN<br>A. MALAGON<br>15FEB2007 |  |                    |                              |       |    |       |    |       |    |        |            |                            |               |  |
| DIMENSIONS:<br>INCHES [mm]   |            | CHK<br>B. BYFORD<br>13MAR2007  |  |                    |                              |       |    |       |    |       |    |        |            |                            |               |  |
| TOLERANCES UNLESS OTHERWISE SPECIFIED:   |            | APVD<br>S. BEARD<br>19MAR2007  | NAME<br>PCB MOUNT RECEPTACLE 6-PIN<br>GP01 MOD DT SERIES |                    |                              |       |    |       |    |       |    |        |            |                            |               |  |
| <table border="0"> <tr> <td>0 PLC</td><td>±-</td></tr> <tr> <td>1 PLC</td><td>±-</td></tr> <tr> <td>2 PLC</td><td>±-</td></tr> <tr> <td>3 PLC</td><td>±-</td></tr> <tr> <td>4 PLC</td><td>±-</td></tr> <tr> <td>ANGLES</td><td>±0° 30' 0"</td></tr> </table> |            | 0 PLC                          | ±-   | 1 PLC              | ±-                           | 2 PLC | ±- | 3 PLC | ±- | 4 PLC | ±- | ANGLES | ±0° 30' 0" | PRODUCT SPEC<br>108-151009 | RESTRICTED TO |  |
| 0 PLC  | ±-         |                                |  |                    |                              |       |    |       |    |       |    |        |            |                            |               |  |
| 1 PLC  | ±-         |                                |  |                    |                              |       |    |       |    |       |    |        |            |                            |               |  |
| 2 PLC  | ±-         |                                |  |                    |                              |       |    |       |    |       |    |        |            |                            |               |  |
| 3 PLC  | ±-         |                                |  |                    |                              |       |    |       |    |       |    |        |            |                            |               |  |
| 4 PLC  | ±-         |                                |  |                    |                              |       |    |       |    |       |    |        |            |                            |               |  |
| ANGLES   | ±0° 30' 0" |                                |  |                    |                              |       |    |       |    |       |    |        |            |                            |               |  |
| MATERIAL   |            | APPLICATION SPEC<br>-          | SIZE<br>A3   | CAGE CODE<br>4AFU8 | DRAWING NO<br>G=DT15-6P-GP01 |       |    |       |    |       |    |        |            |                            |               |  |
| FINISH   |            | WEIGHT<br>21.8 g               | SCALE<br>2:1   |                    |                              |       |    |       |    |       |    |        |            |                            |               |  |
|  |            | Customer Drawing               |  | SHEET 2 OF 2       | REV A                        |       |    |       |    |       |    |        |            |                            |               |  |