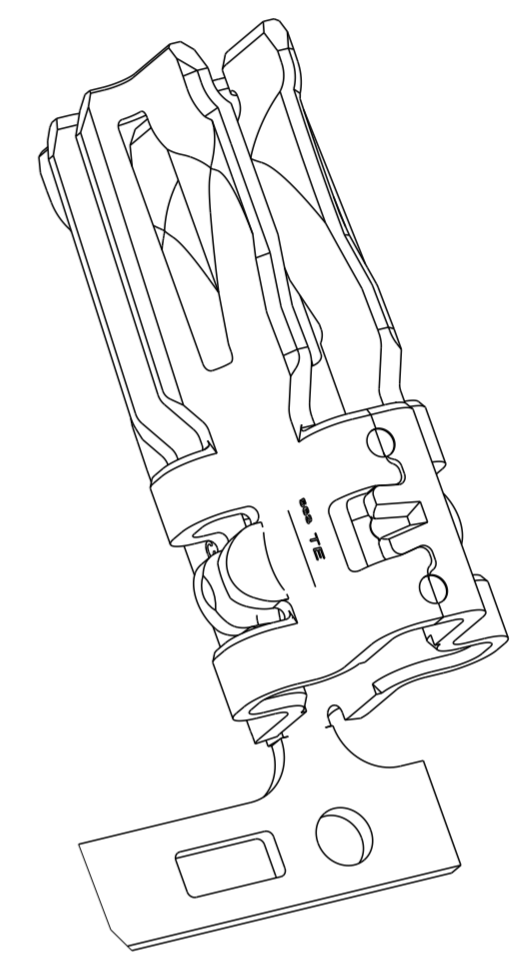
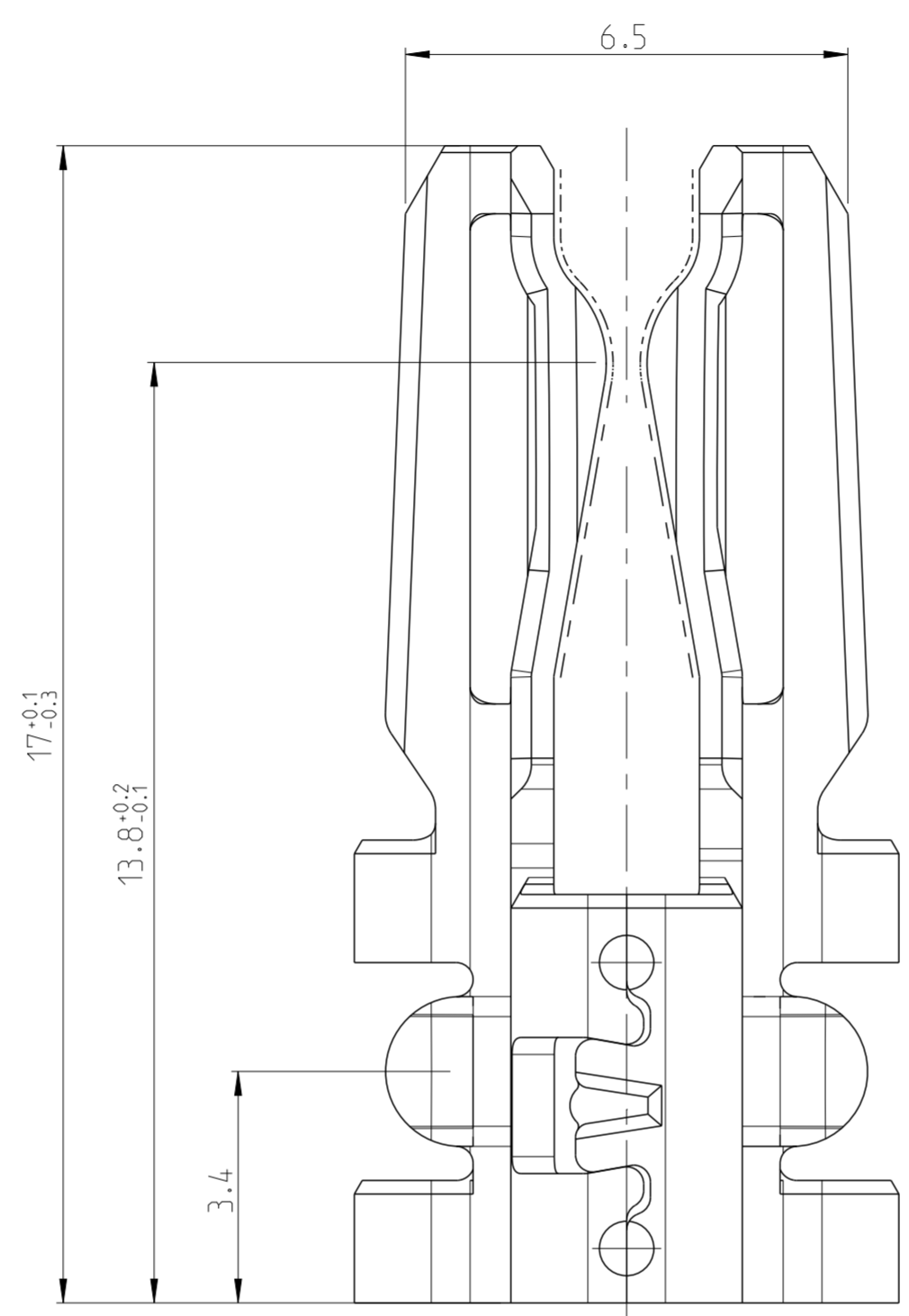
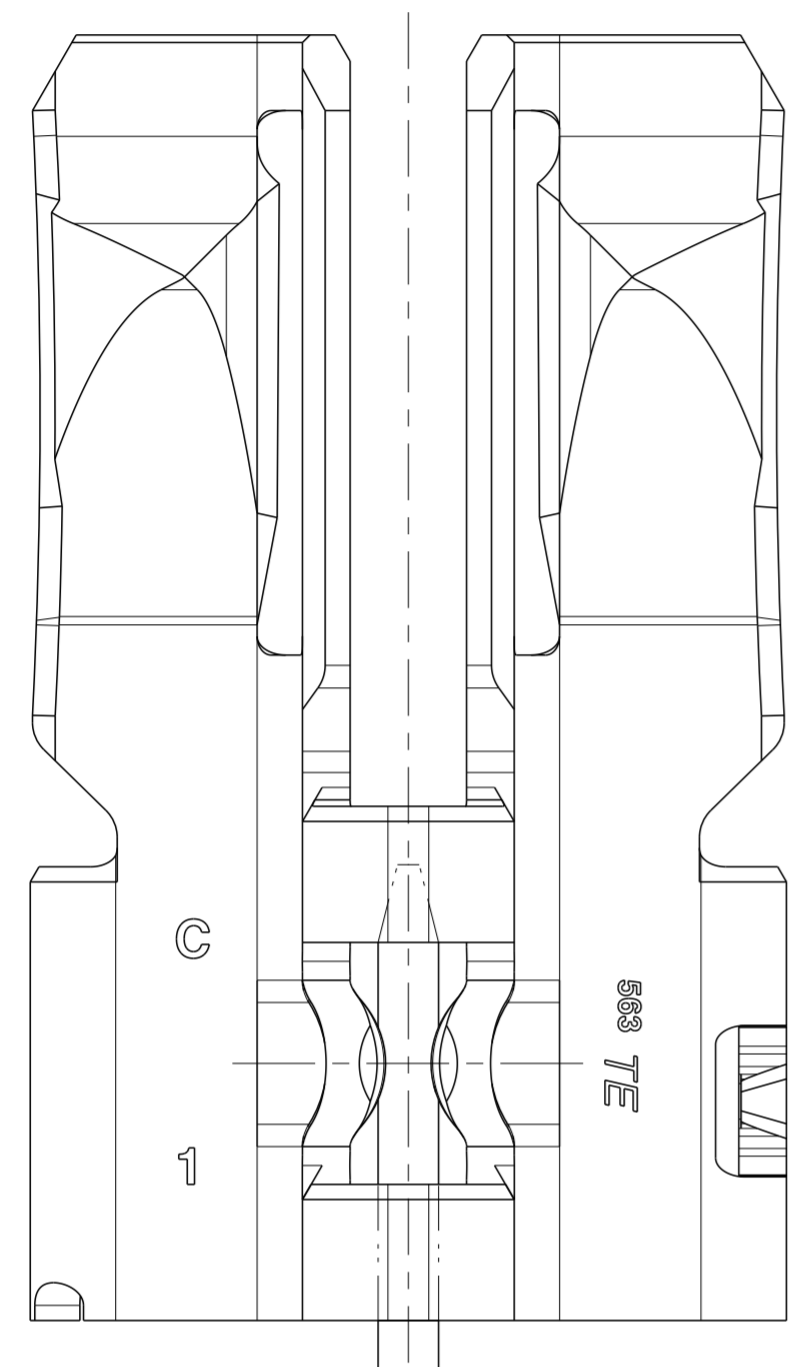


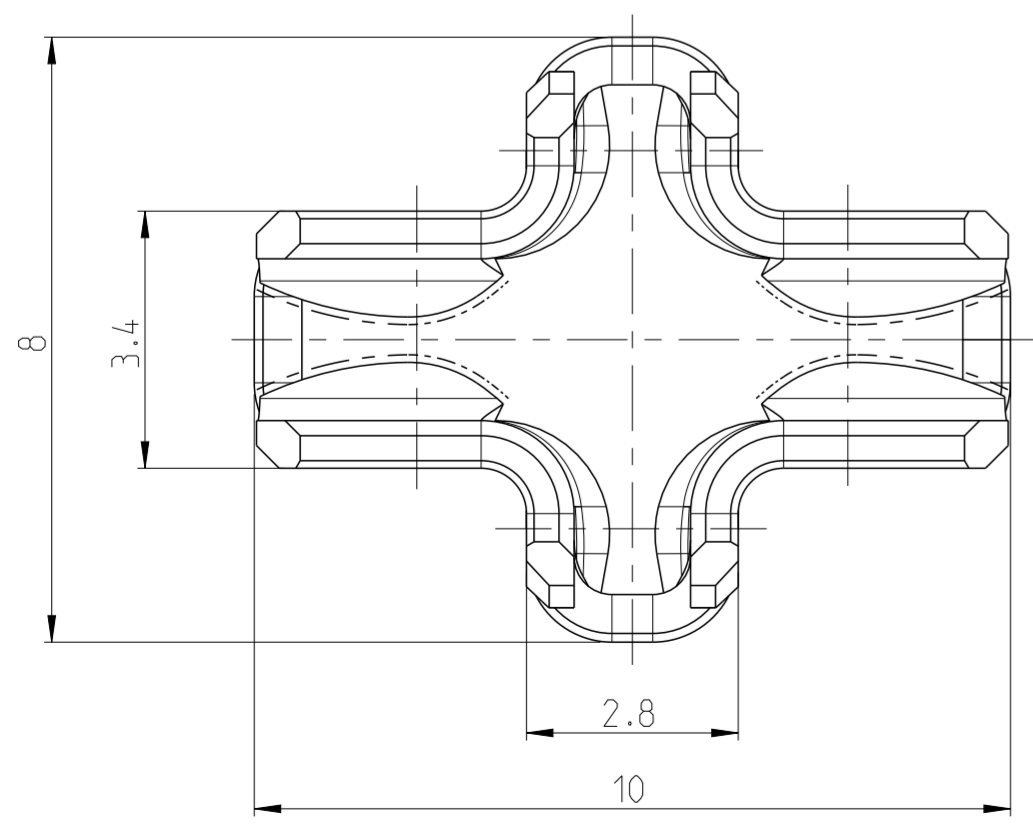
THIS DRAWING IS UNPUBLISHED. RELEASED FOR PUBLICATION 2011
 © COPYRIGHT 2011 ALL RIGHTS RESERVED.

| LOC | | DIST | | REVISIONS | | | |
|-----|-----|-------------|-------------|------------|------|----|--|
| P | LTR | DESCRIPTION | DATE | DWN | APVD | | |
| GT | - | A | NEW DRAWING | 24 JUN2013 | MP | VC | |

MATING PARTS ONLY IN THIS POSITION



PLUG POSITION FOR CONNECTION TAB



1. DETAILS OF DESIGN ARE LEFT TO MANUFACTURER
2. DIE FEED 28.0
3. SUITABLE FOR STAMPED LEAD FRAME 0.8 THICKNESS
4. SUITABLE FOR TAB THICKNESSES 0.8 AND 1.2
5. THE RECEPTACLE CAN BE MATED ONLY IN ORIENTED POSITION WITH STAMPED CIRCUIT TAB
PREFERRED STAMPED CIRCUIT TAB DIMENSIONS SEE TE SPEC. 114-18220-001
6. CAVITY STANDARD 114-18981-001

| PART NUMBER | REV. | SURFACE | PACKING | CONNECTION OF CARRIER STRIP |
|-------------|------|----------------|--------------|--------------------------------|
| 2-968910-2 | C | | PALLET | SPLICE BY WIRE OR BUTT WELDING |
| 1-968910-2 | C | PRE TIN-SILVER | REEL PLASTIC | SPLICE FREE OR BUTT WELDING |
| 0-968910-2 | C | | REEL PAPER | SPLICE FREE OR BUTT WELDING |
| 2-968910-1 | C | | PALLET | SPLICE BY WIRE OR BUTT WELDING |
| 1-968910-1 | C | PRE TIN | REEL PLASTIC | SPLICE FREE OR BUTT WELDING |
| 0-968910-1 | C | | REEL PAPER | SPLICE FREE OR BUTT WELDING |

| | |
|--|--|
| THIS DRAWING IS A CONTROLLED DOCUMENT. | |
| DIMENSIONS: mm | TOLERANCES UNLESS OTHERWISE SPECIFIED: ISO 2768-H -E |
| 0 PLC ± | 1 PLC ±0.1 |
| 2 PLC ± | 3 PLC ±0.2 |
| 4 PLC ± | ANGLES ±° |
| MATERIAL | FINISH |
| CuNiSi | 7 SEE TABLE |

| | | | |
|----------------------------|---------------------|-----------|--|
| DWN Pavlicek M 24 JUN2013 | TE Connectivity | NAME | 9.5 CROSS-CONTACT TO STAMPED CIRCUIT 0.8MM |
| CHK Kostelnik J 26 JUN2013 | | SIZE | A2 |
| APVD Cech V 18 JUL2013 | | CAGE CODE | 100779 |
| PRODUCT SPEC 108-94188 | DRAWING NO | C-968910 | RESTRICTED TO |
| APPLICATION SPEC 114-94202 | WEIGHT | - | - |
| CUSTOMER DRAWING | SCALE | 5:1 | SHEET 1 OF 1 REV A |