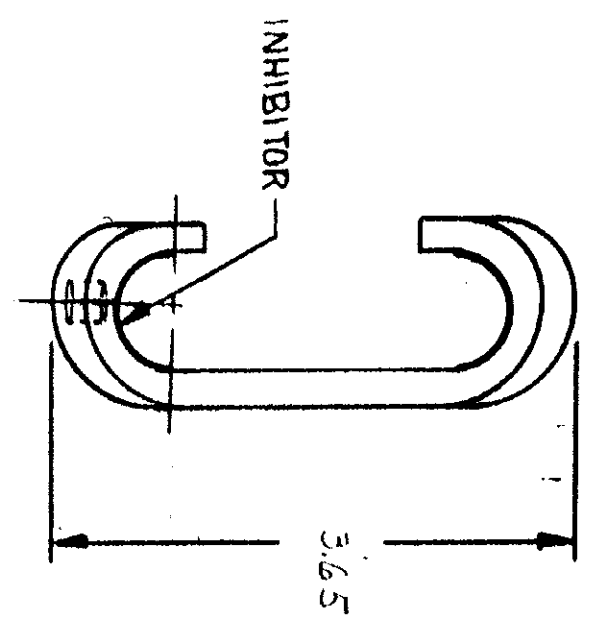
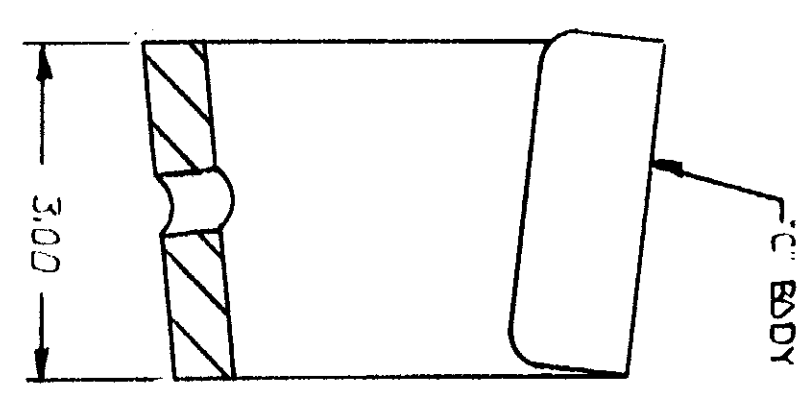
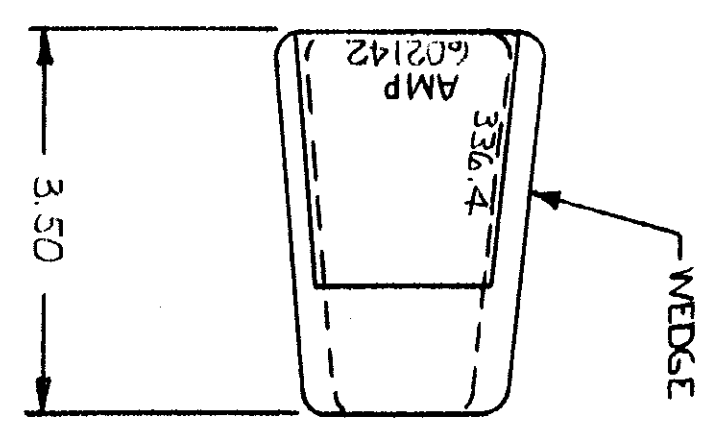
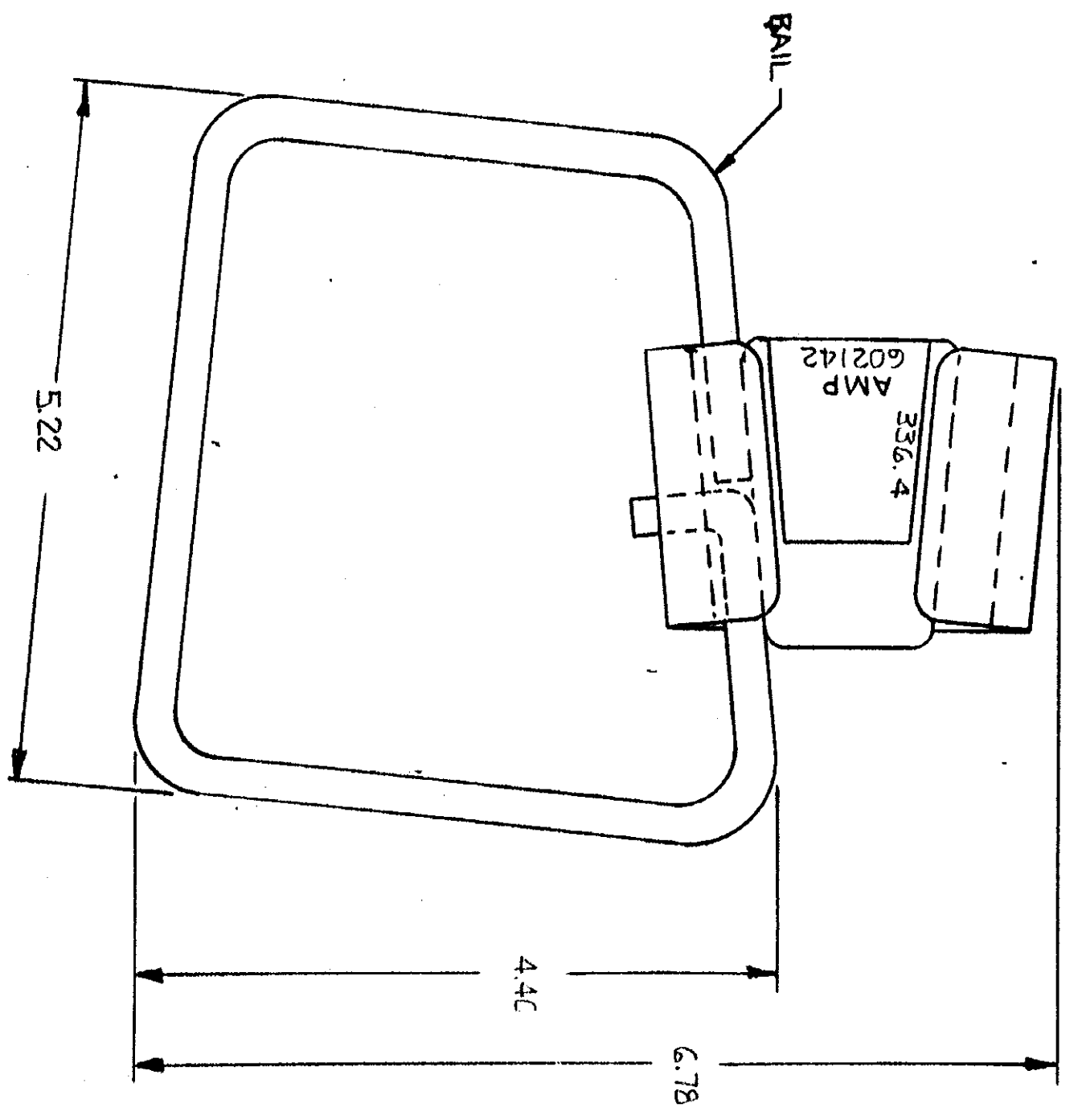


UNLESS OTHERWISE SPECIFIED, ALL DIMENSIONS ARE IN INCHES. ALL DIMENSIONS ARE TO BE TAKEN TO THE CENTER OF THE PART UNLESS OTHERWISE SPECIFIED. ALL DIMENSIONS ARE TO BE TAKEN TO THE CENTER OF THE PART UNLESS OTHERWISE SPECIFIED. ALL DIMENSIONS ARE TO BE TAKEN TO THE CENTER OF THE PART UNLESS OTHERWISE SPECIFIED.



REV	DATE	APPROVED	DESCRIPTION
1	5-7-75	AK	67-1523

NO.	DESCRIPTION	MATERIAL & FINISH
1	BAIL	COPPER (ASTM B3), TIN PL. (MIL-T-10121)
1	WEDGE	ALUM. (A334 ALLOY) CLEANED
1	C BODY	ALUM ALLOY (90-A-250/II) CLEANED

UNLESS OTHERWISE SPECIFIED DIMENSIONS ARE IN INCHES. TOLERANCES ON: DECIMALS ±.02 ANGLES 10°/30°

MATERIAL (SEE TABLE)

FINISH (SEE TABLE)

CONTRACT NO.	5-6-75
DR.	J. A. Davis
CHK.	J. A. Davis
APPD.	C. Brader
DSGN APPD.	C. Brader
OTHER APPD.	
NAME	AMP INCORPORATED Harrisburg, Pa.
SIZE (CODE IDENT NO) NUMBER	602142
SCALE	NTS.