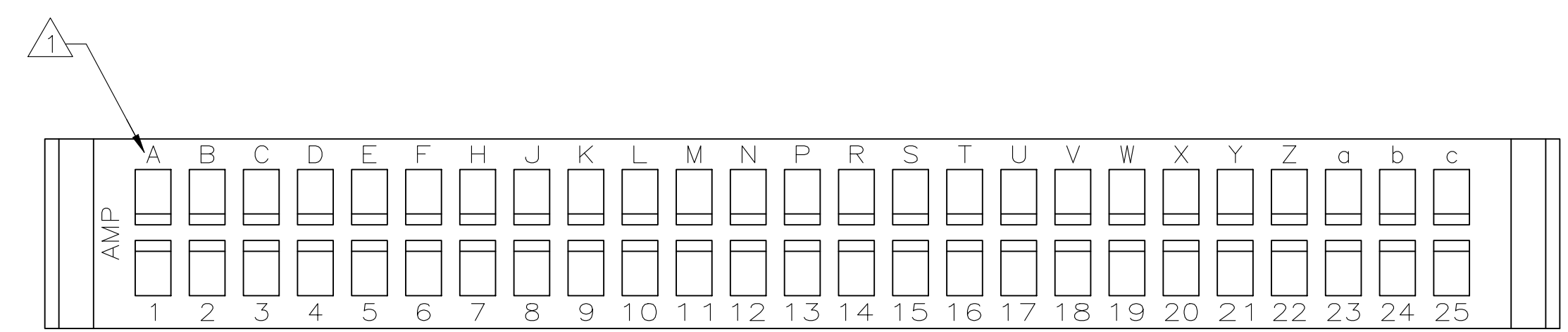
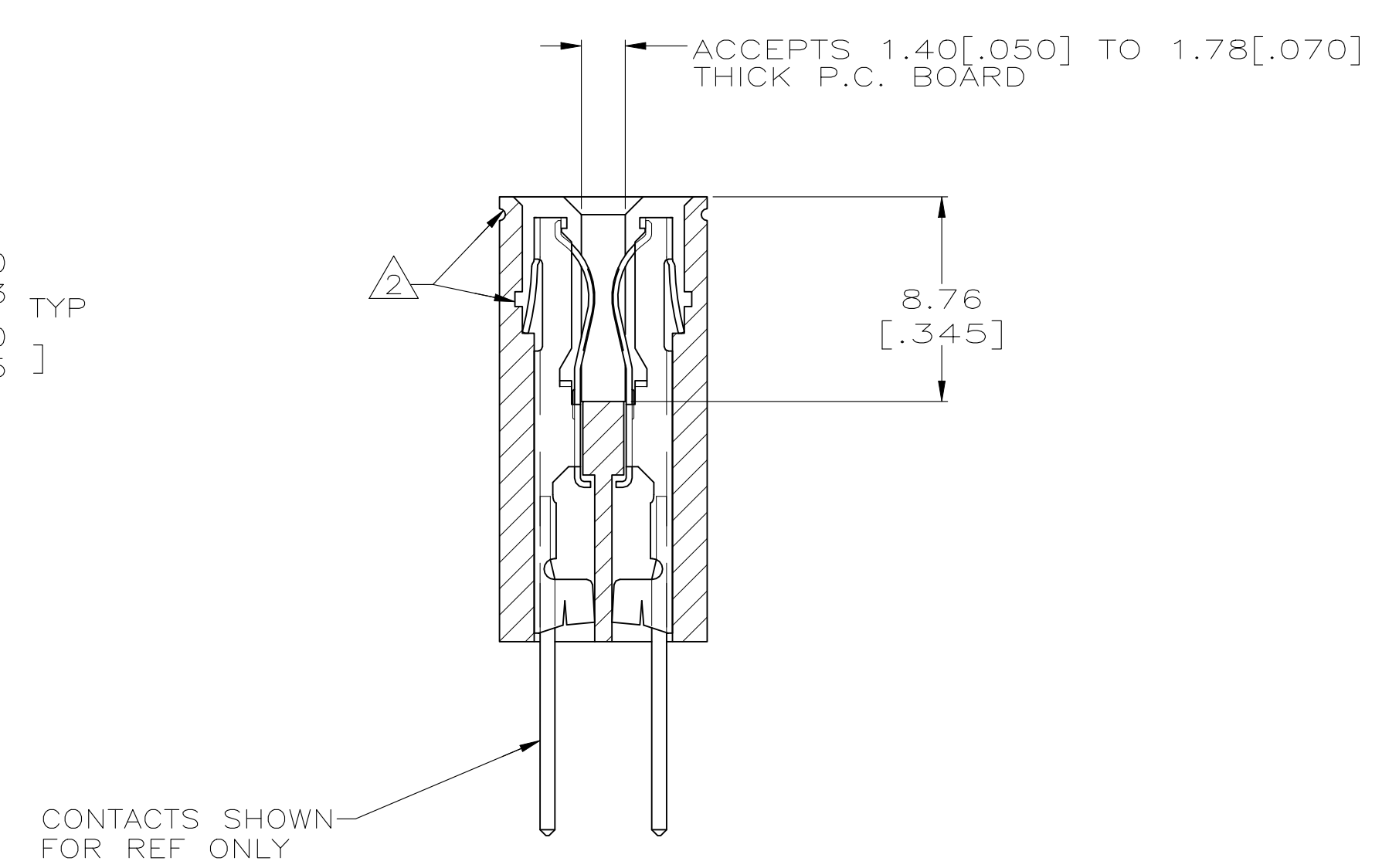
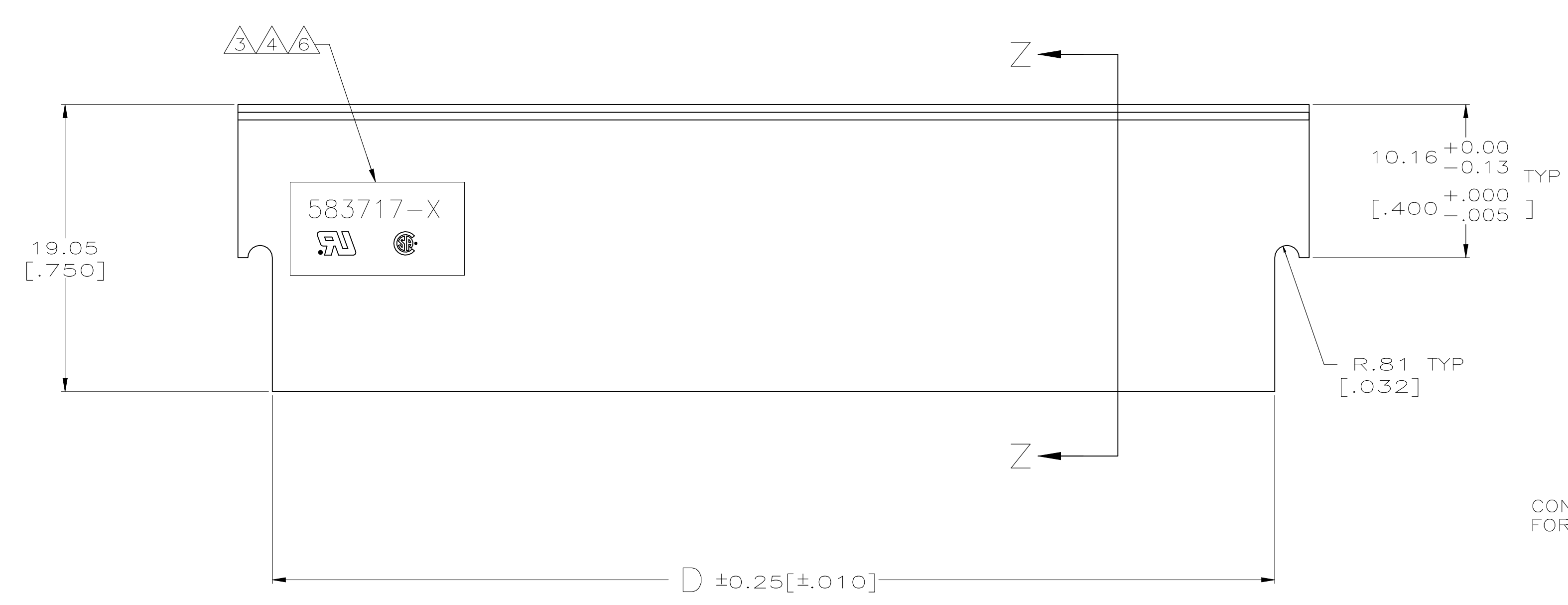
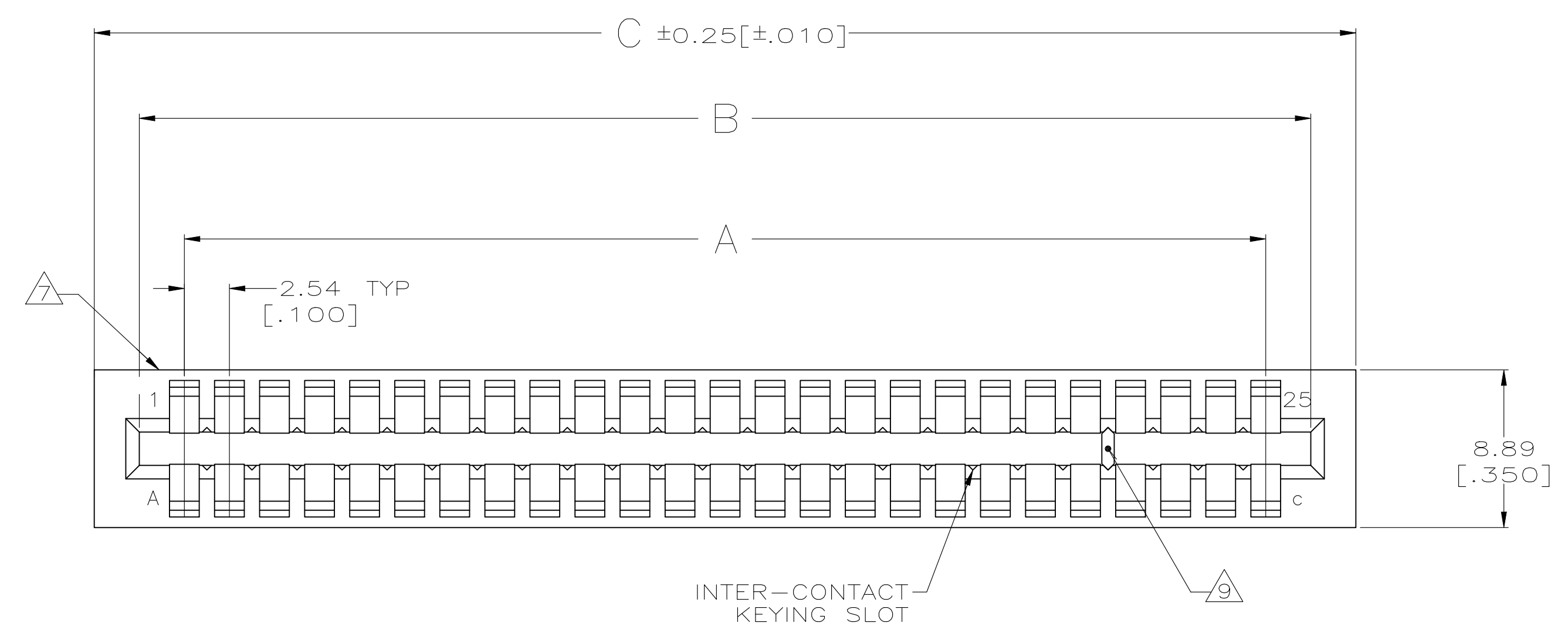


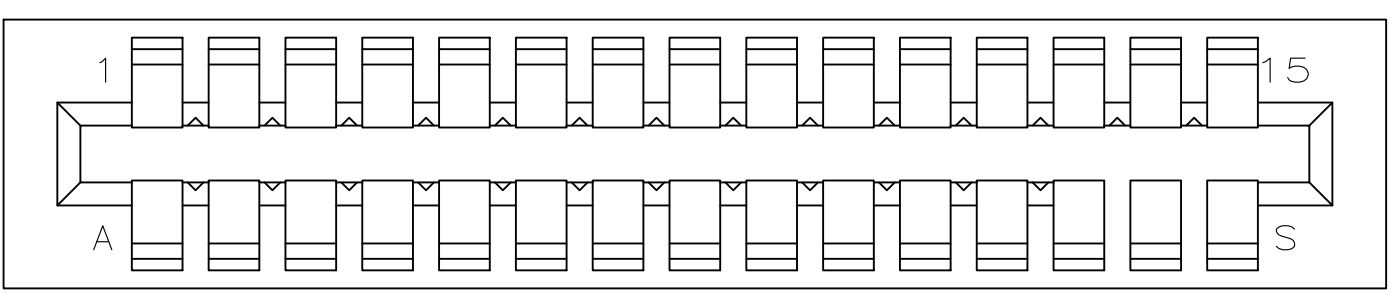
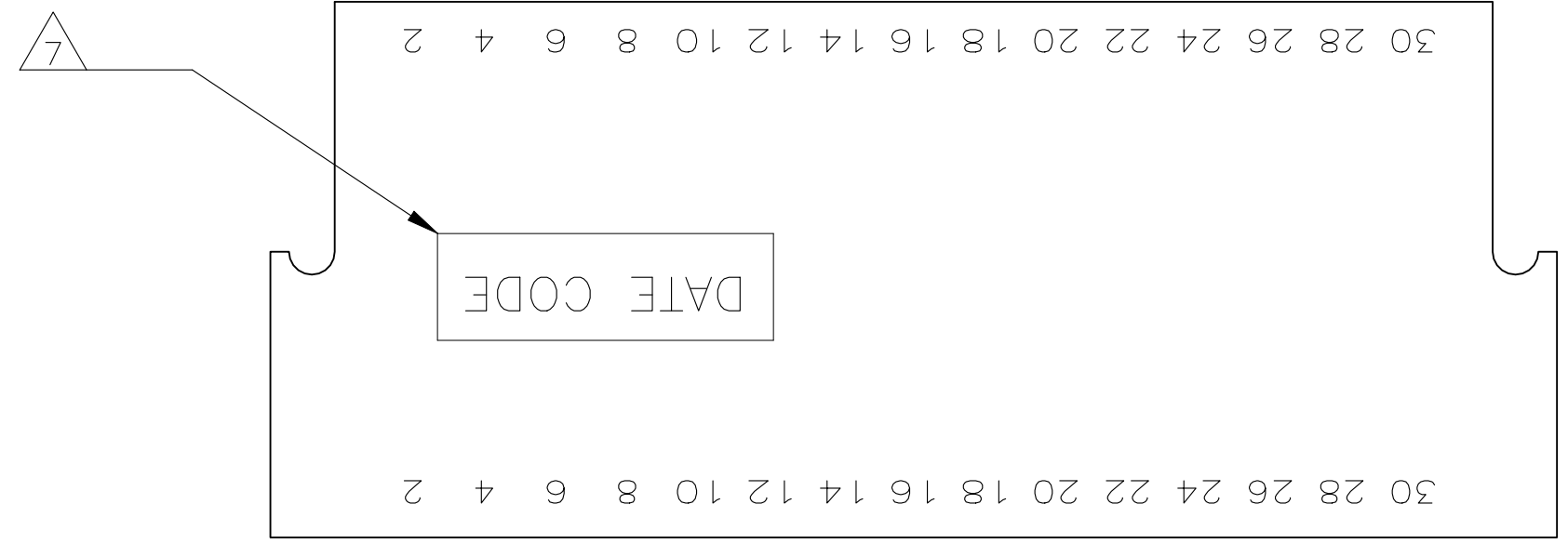
| REVISIONS | | | | | |
|-----------|-----|---------------------------|-----------|----|------|
| P | LTR | DESCRIPTION | DATE | DN | APVD |
| AA4 | | REVISED PER ECN-23-239013 | 30JAN2024 | RK | MF |



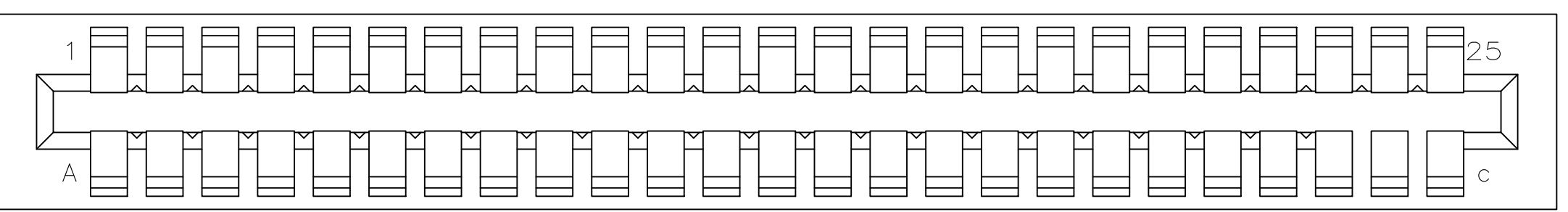
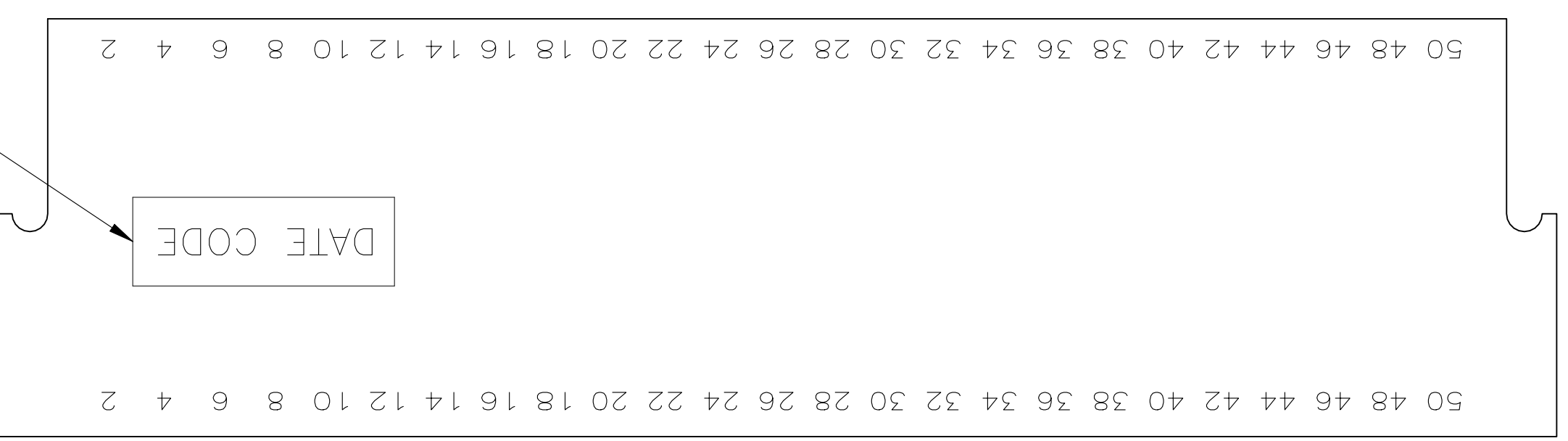
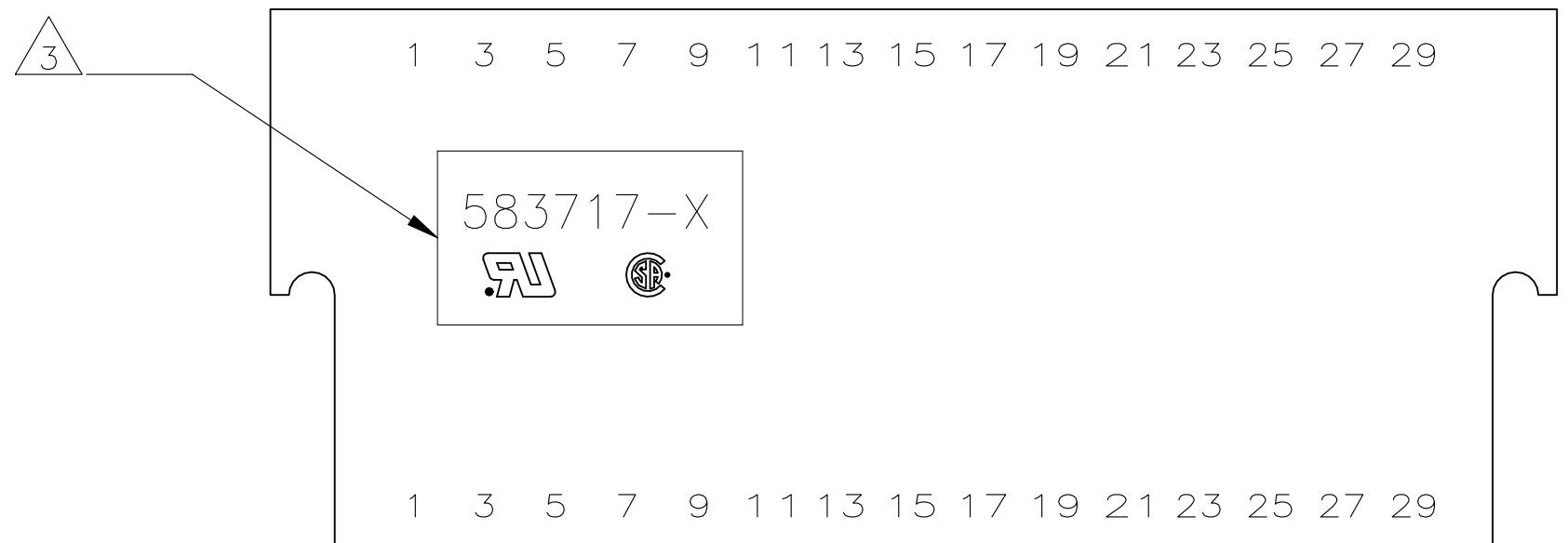
THIS DRAWING IS A CONTROLLED DOCUMENT FOR AMP INCORPORATED. IT IS SUBJECT TO CHANGE AND THE CONTROLLING ENGINEERING ORGANIZATION SHOULD BE CONTACTED FOR THE LATEST REVISION.

| | | | | |
|---|--|------------------|-----------------------|------------|
| THIS DRAWING IS A CONTROLLED DOCUMENT. | | DIN 12-10-92 | TE Connectivity Ltd. | |
| DIMENSIONS: MM(INCHES) | | CHK 2/18/94 | APVD H ROSE | |
| TOLERANCES UNLESS OTHERWISE SPECIFIED: | | NAME | HOUSING, CRIMP SNAP | |
| 0. PLC $\pm -$ | | PRODUCT SPEC | TWIN LEAF, .100 CL | |
| 1. PLC $\pm -$ | | APPLICATION SPEC | WITHOUT MOUNTING EARS | |
| 2. PLC $\pm -$ | | SIZE | CAGE CODE | DRAWING NO |
| 3. PLC $\pm 0.13[\pm 0.005]$ | | WEIGHT | A1 | 00779 |
| 4. PLC ANGLES $\pm -$ | | CUSTOMER DRAWING | SCALE | 4:1 |
| MATERIAL: GLASS FILLED POLYESTER COLOR: BLACK | | FINISH | SHEET | 1 OF 2 |
| | | REV | AA4 | |

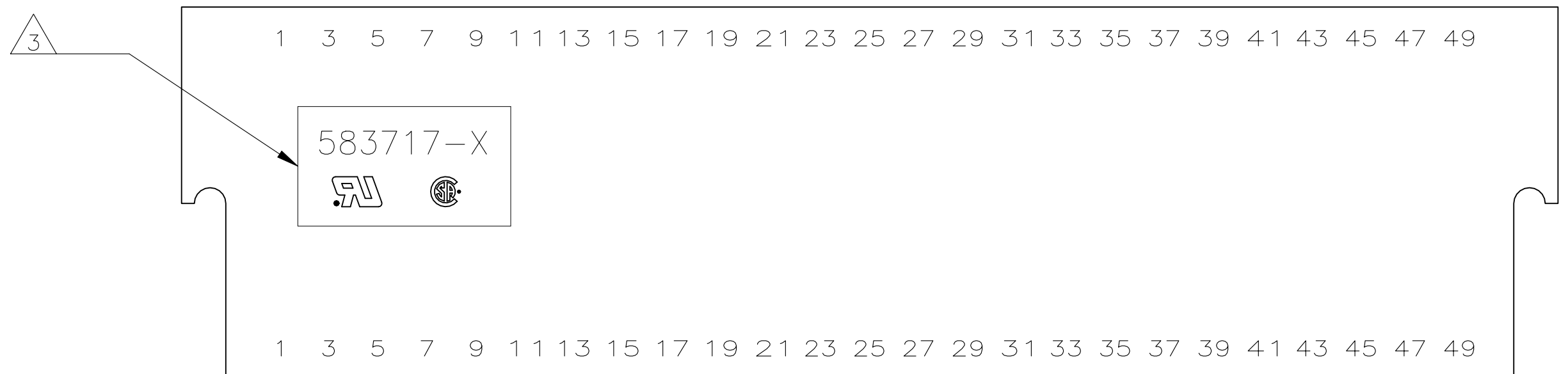
| REVISIONS | | | | |
|-----------|-------------|-------------|------|--------|
| P | LTR | DESCRIPTION | DATE | APPROV |
| - | SEE SHEET 1 | | - | - |



3-583717-4



3-583717-5



- ① FIRST 22 POSITIONS MARKED WITH UPPER CASE LETTERS, FOLLOWED BY LOWER CASE LETTERS, FOLLOWED BY UPPERCASE AA,AB,AC ETC. CHARACTERS G,I,O AND Q ARE OMITTED. SEE TABLE FOR END CAVITY IDENTIFICATION.
- ② OPTIONAL PULL GROOVES. THE PULL GROOVE LENGTH, SIZE AND LOCATION ARE AT THE DISCRETION OF THE MOLD VENDOR.
- ③ HOUSING PART NUMBER, UL & CSA LOGO'S TO BE MOLDED IN THIS AREA. UL, LOGO PER 1-18838-3, CSA LOGO PER 1-18839-3.
- ④ HOT STAMP CUSTOMER PART NUMBER 2571 0880 FOR 2-583717-9 ONLY.
- ⑤ HOT STAMP CUSTOMER PART NUMBER 655862-2 IN THIS AREA.
- ⑥ DATE CODE TO BE MOLDED IN THIS AREA
- ⑦ MOLDED KEYING PLUG LOCATED BETWEEN CIRCUITS 25 AND 26 FOR PART NUMBER 4-583717-6 ONLY.
- ⑧ PRELIMINARY - NOT RELEASED FOR PRODUCTION.

| ⑧ | ⑨ | 3 & C | 10.67 [.420] | 15.24 [.600] | 10.16 [.400] | 5.08 [.200] | 3 | 4-583717-8 |
|----------|----------|------------------|-------------------|-------------------|-------------------|------------------|------|-------------|
| | | 23 & A | 61.47 [2.420] | 66.04 [2.600] | 60.96 [2.400] | 55.88 [2.200] | 23 | 4-583717-7 |
| ⑧ | OBSOLETE | 30 & J | 79.25 [3.120] | 83.82 [3.300] | 78.74 [3.100] | 73.66 [2.900] | 30 | 4-583717-6 |
| | OBSOLETE | 27 & E | 71.63 [2.820] | 76.20 [3.000] | 71.12 [2.800] | 66.04 [2.600] | 27 | 4-583717-5 |
| | OBSOLETE | 8 & J | 23.37 [.920] | 27.94 [1.100] | 22.86 [.900] | 17.78 [.700] | 8 | 3-583717-9 |
| ⑥ | OBSOLETE | 13 & P | 36.07 [1.420] | 40.64 [1.600] | 35.56 [1.400] | 30.48 [1.200] | 13 | 3-583717-8 |
| ⑤ | OBSOLETE | 25 & c | 66.55 [2.620] | 71.12 [2.800] | 66.04 [2.600] | 60.96 [2.400] | 25 | 3-583717-5 |
| ⑤ | OBSOLETE | 15 & S | 41.15 [1.620] | 45.72 [1.800] | 40.64 [1.600] | 35.56 [1.400] | 15 | 3-583717-4 |
| | OBSOLETE | 13 & P | 36.07 [1.420] | 40.64 [1.600] | 35.56 [1.400] | 30.48 [1.200] | 13 | 3-583717-3 |
| | | 20 & X | 53.85 [2.120] | 58.42 [2.300] | 53.34 [2.100] | 48.26 [1.900] | 20 | 3-583717-1 |
| ④ | OBSOLETE | 15 & S | 41.15 | | | | | |
| | | 14 & R | 38.61 | | | | | |
| | OBSOLETE | 28 & f | 74.17 | | | | | |
| | | 7 & H | 20.83 [.820] | | | | | |
| | | 6 & F | 18.29 [.720] | | | | | |
| | | 50 & AF | 130.05 | | | | | |
| | | 40 & v | 104.65 [4.120] | 109.22 [4.300] | 104.14 [4.100] | 99.06 [3.900] | 40 | 1-583717-5 |
| | | 30 & j | 79.25 | | | | | |
| | | 25 & c | 66.55 | | | | | |
| | | | [2.320] | [2.500] | [2.300] | [2.100] | | |
| OBSOLETE | | 18 & v | 48.77 [1.920] | 53.34 [2.100] | 48.26 [1.900] | 43.18 [1.700] | 18 | 583717-7 |
| OBSOLETE | | 17 & U | 46.23 [1.820] | 50.80 [2.000] | 45.72 [1.800] | 40.64 [1.600] | 17 | 583717-5 |
| OBSOLETE | | 15 & S | 41.15 [1.620] | 45.72 [1.800] | 40.64 [1.600] | 35.56 [1.400] | 15 | 583717-3 |
| OBSOLETE | | 10 & L | 28.45 [1.120] | 33.02 [1.300] | 27.94 [1.100] | 22.86 [.900] | 10 | 583717-1 |
| | | END CAVITY IDENT | D | C | B | A | POSN | PART NUMBER |

THIS DRAWING IS A CONTROLLED DOCUMENT FOR AMP INCORPORATED. IT IS SUBJECT TO CHANGE AND THE CONTROLLING ENGINEERING ORGANIZATION SHOULD BE CONTACTED FOR THE LATEST REVISION.

| | | | | | |
|--|--|--|--|--------------------------------|--|
| THIS DRAWING IS A CONTROLLED DOCUMENT. | | DIN J GALLUCCI BG 12-10-92 | | PART NO | |
| DIMENSIONS: INCHES | | TOLERANCES UNLESS OTHERWISE SPECIFIED: | | APPROV H ROSE 2/18/94 | |
| 0. PLC ± - | | 1. PLC ± - | | NAME HOUSING, CRIMP SNAP | |
| 2. PLC ± - | | 3. PLC ± 0.13(.005) | | TWIN LEAF, .100 CL | |
| 4. PLC ± - | | ANGLES ± - | | WITHOUT MOUNTING EARS | |
| MATERIAL - | | FINISH - | | SIZE A1 | |
| | | | | CAGE CODE 00779 | |
| | | | | DRAWING NO 583717 | |
| | | | | RESTRICTED TO | |
| | | | | CUSTOMER DRAWING | |
| | | | | SCALE 4:1 SHEET 2 OF 2 REV AA4 | |