

THIS DRAWING IS UNPUBLISHED RELEASED FOR PUBLICATION - ,2018.

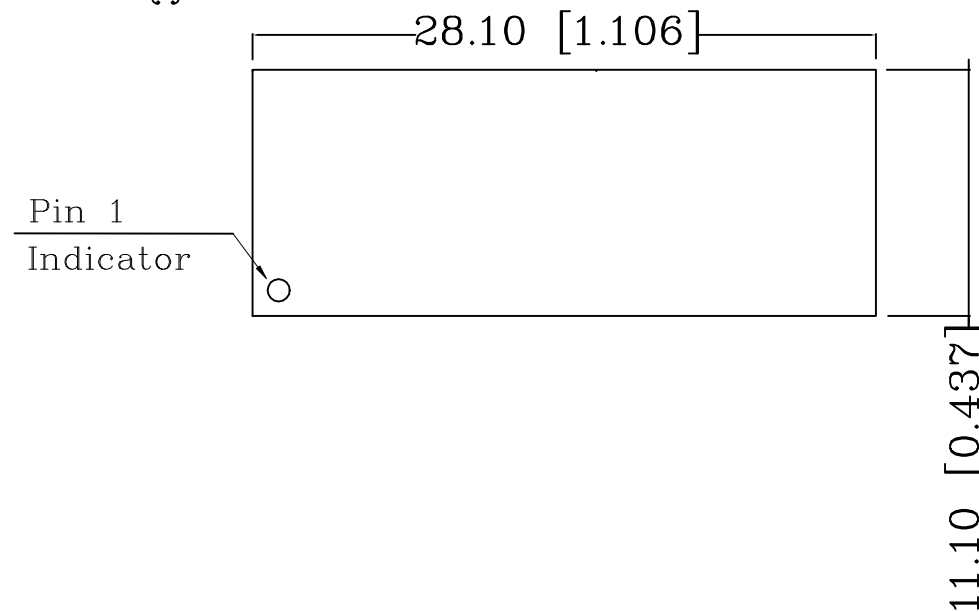
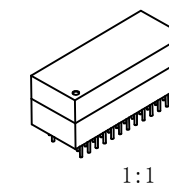
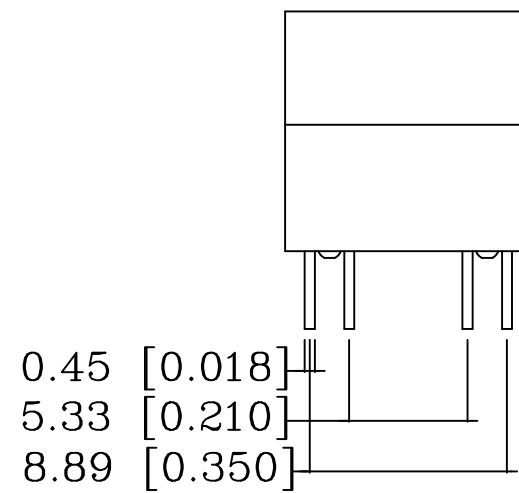
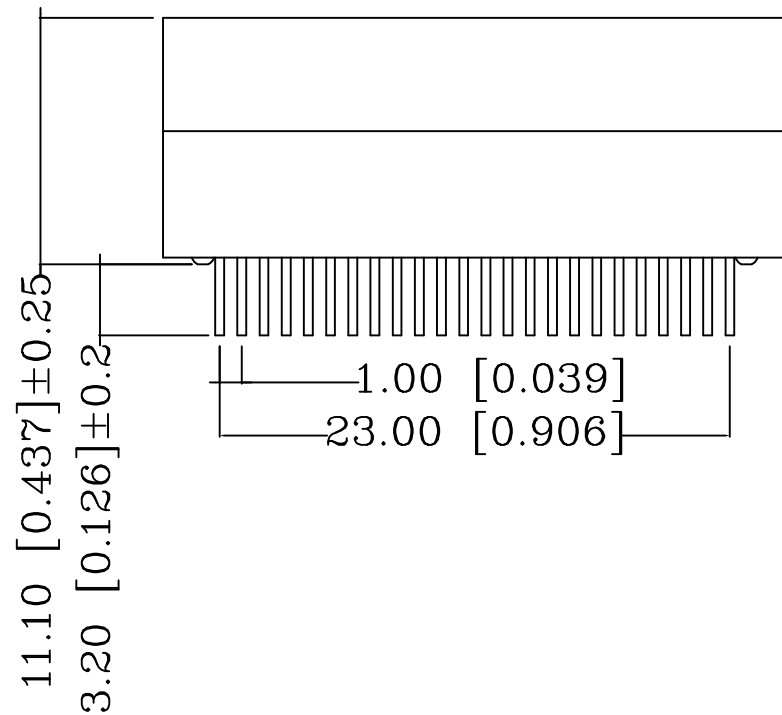
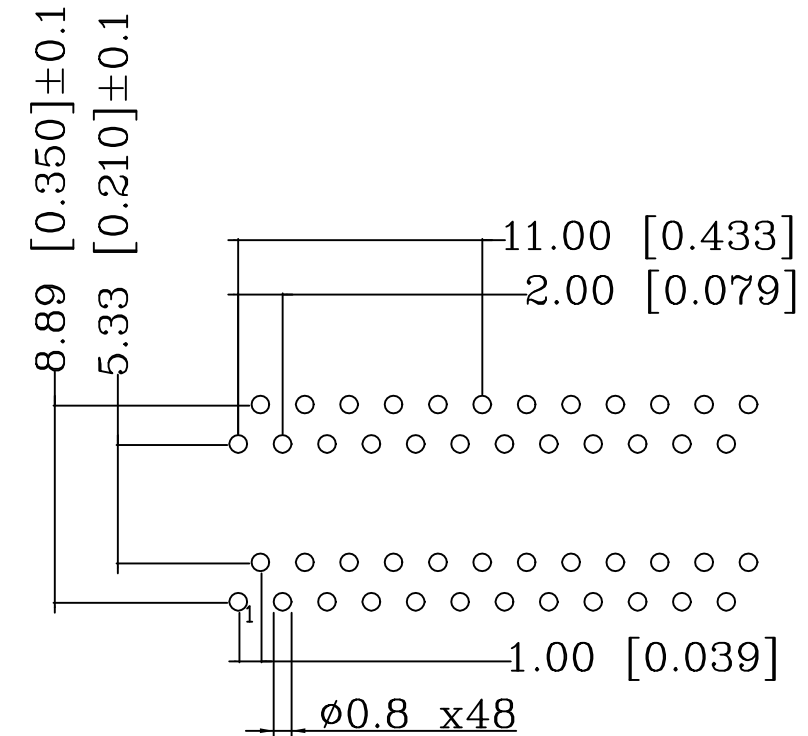
© COPYRIGHT - 2017 by TE Connectivity Germany GmbH ALL RIGHTS RESERVED.

REVISIONS

| P | LTR | DESCRIPTION | DATE | DWN | APVD |
|---|-----|-------------|-----------|-----|------|
| | A1 | NEW RELEASE | 20DEC2018 | GCM | JDB |

- ⚠ Material:
 - COVER : Black PF2A5-151J, UL-94-V0
 - HEADER : Black PF2A5-151J, UL-94-V0
 - SOLDER PIN: CP WIRE
 - SOLDER PIN PLATING: 4 μm (157 μinch) MIN. 100% TIN,
8 μm (315 μinch) MIN. COPPER OVER ALL
- 2 THE PART IS RECOMMENDED FOR WAVE SOLDERING PROCESS
SOLDERING: TEMPERATURE +260 ±5 °C, 10 ±1 s
- 3 OPERATING TEMPERATURE: T= -40 °C TO +85 °C
- 4 STORAGE TEMPERATURE: T= -40 °C TO +85 °C
- 5 MEET IEEE 802.3ab REQUIRMENT
- ⚠ UNLESS OTHERWISE SPECIFIED, SEE TABLE FOR ALL DIMENSIONS TOLERANCES
- 7 PACKAGING: TUBE ACCORDING TO PACKAGING SPECIFICATION 107-18128

SUGGESTED PCB LAYOUT



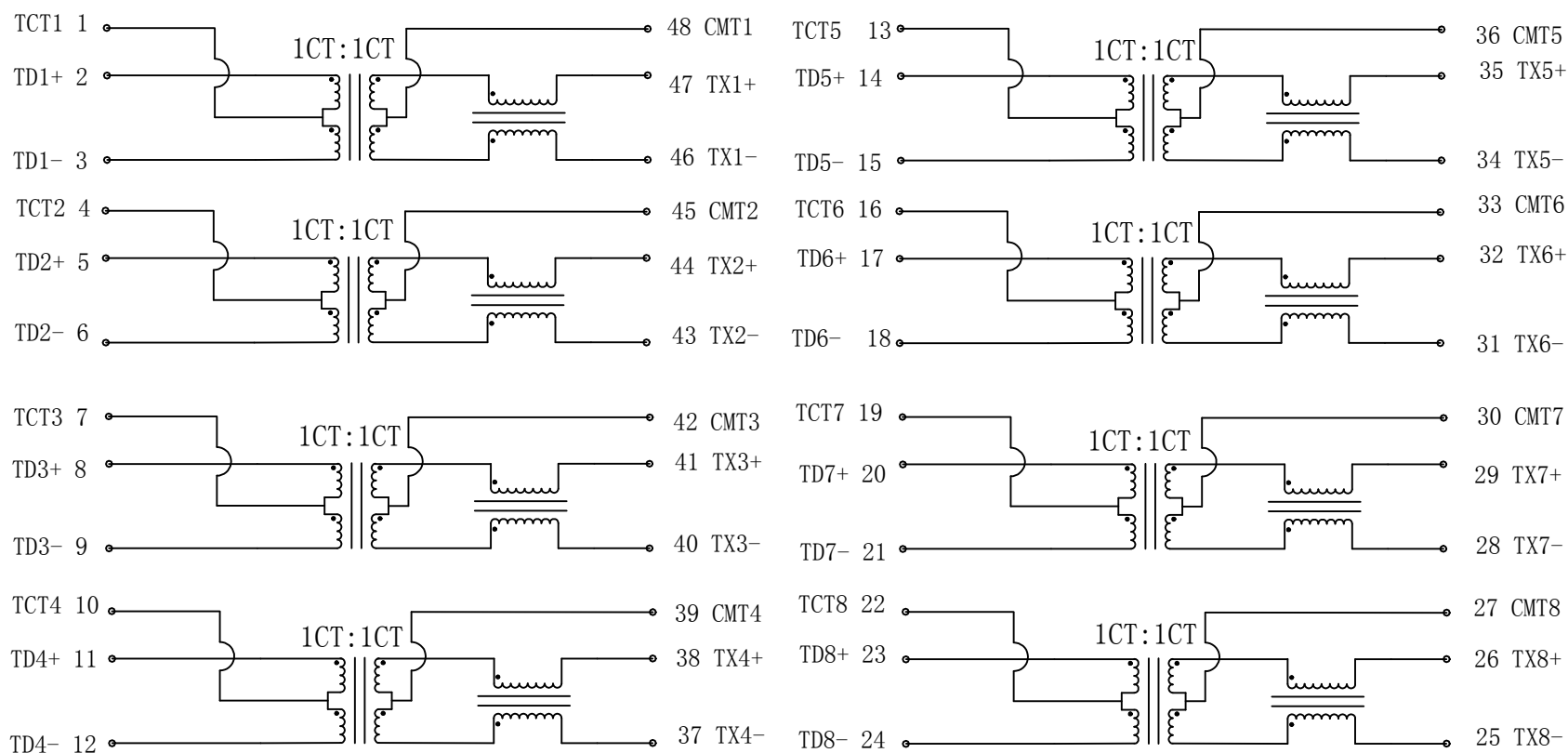
| TABLE OF TOLERANCE (mm) | |
|-------------------------|-----------|
| RANGE | TOLERANCE |
| 0-10 | ±0.15 |
| >10-40 | ±0.25 |
| >40-70 | ±0.30 |
| >70 | ±0.40 |

| | | | | | | | | | | | | | | | | | |
|--|-----|------------------------------------|-------------------------------------|-----------------------------|-------|-----|-------|-----|-------|-----|-------|-----|--------|-----|---------------------------|------------|--|
| THIS DRAWING IS A CONTROLLED DOCUMENT. | | DWN GANESH C M 20DEC2018 | TE TE Connectivity | | | | | | | | | | | | | | |
| DIMENSIONS: mm [INCHES] | | CHK A.C. NGOUMGANG 20DEC2018 | | | | | | | | | | | | | | | |
| TOLERANCES UNLESS OTHERWISE SPECIFIED: | | APVD J. DE BRUIJN 20DEC2018 | NAME DISCR.ETH.MAG. 1GB DUAL THT | | | | | | | | | | | | | | |
| <table border="0"> <tr><td>0 PLC</td><td>± -</td><td rowspan="5">⚠</td></tr> <tr><td>1 PLC</td><td>± -</td></tr> <tr><td>2 PLC</td><td>± -</td></tr> <tr><td>3 PLC</td><td>± -</td></tr> <tr><td>4 PLC</td><td>± -</td></tr> <tr><td>ANGLES</td><td>± -</td></tr> </table> | | 0 PLC | ± - | ⚠ | 1 PLC | ± - | 2 PLC | ± - | 3 PLC | ± - | 4 PLC | ± - | ANGLES | ± - | PRODUCT SPEC 108-94693 | SIZE A3 | |
| 0 PLC | ± - | ⚠ | | | | | | | | | | | | | | | |
| 1 PLC | ± - | | | | | | | | | | | | | | | | |
| 2 PLC | ± - | | | | | | | | | | | | | | | | |
| 3 PLC | ± - | | | | | | | | | | | | | | | | |
| 4 PLC | ± - | | | | | | | | | | | | | | | | |
| ANGLES | ± - | | | | | | | | | | | | | | | | |
| MATERIAL ⚠ | | APPLICATION SPEC 114-94555 | CAGE CODE 00779 | DRAWING NO C=5-2337825-3 | | | | | | | | | | | | | |
| FINISH ⚠ | | WEIGHT | RESTRICTED TO - | | | | | | | | | | | | | | |
| CUSTOMER DRAWING | | | SCALE 4:1 | SHEET 1 of 2 | | | | | | | | | | | | | |
| | | | REV A1 | | | | | | | | | | | | | | |

REVISIONS

| P | LTR | DESCRIPTION | DATE | DWN | APVD |
|---|-----|-------------|------|-----|------|
| - | - | SEE SHEET 1 | - | - | - |

CIRCUIT DIAGRAM



Electrical Specifications @ 25 °C
(Unless other specified meet IEEE 802.3 Specification)

| | | |
|--|-------------|---------------|
| Turn Ratio | 1CT:1CT ±2% | |
| Inductance (OCL) @100kHz/0.1V with 8mA DC Bias | 350 µH min. | |
| Insertion Loss | 0.1-100MHz | -1 dB max. |
| Return Loss (Zout = 100 OHMS) | 1-30MHz | -18 dB min. |
| | 40MHz | -14.4 dB min. |
| | 50MHz | -13.1 dB min. |
| | 80MHz | -12 dB min. |
| Crosstalk | 100MHz | -10 dB min. |
| | 30MHz | -40 dB min. |
| | 60MHz | -35 dB min. |
| DCMR | 100MHz | -30 dB min. |
| | 30MHz | -40 dB min. |
| | 60MHz | -35 dB min. |
| Isolation Voltage (Input - Output) | 1500 Vrms | |



CONTROL CODE

DATE CODE

"0213"

YY-YEAR

WW-WEEK

| | | | | |
|---|--|------------------------------------|--|--------------------|
| THIS DRAWING IS A CONTROLLED DOCUMENT. | | DWN GANESH C M 20DEC2018 | TE Connectivity NAME DISCR.ETH.MAG. 1GB DUAL THT | |
| DIMENSIONS: mm [INCHES] | | CHK A.C. NGOUMGANG 20DEC2018 | | |
| TOLERANCES UNLESS OTHERWISE SPECIFIED: | | APVD J. DE BRUIJN 20DEC2018 | DRAWING NO 5-2337825-3 | |
| 0 PLC ± - 1 PLC ± - 2 PLC ± - 3 PLC ± - 4 PLC ± - ANGLES ± - | | PRODUCT SPEC 108-94693 | RESTRICTED TO - | |
| MATERIAL 1 | | APPLICATION SPEC 114-94555 | SIZE A3 | CAGE CODE 00779 |
| FINISH 1 | | WEIGHT | DRAWING NO 5-2337825-3 | |
| CUSTOMER DRAWING | | | SCALE 4:1 | SHEET 2 of 2 |
| | | | REV A1 | |