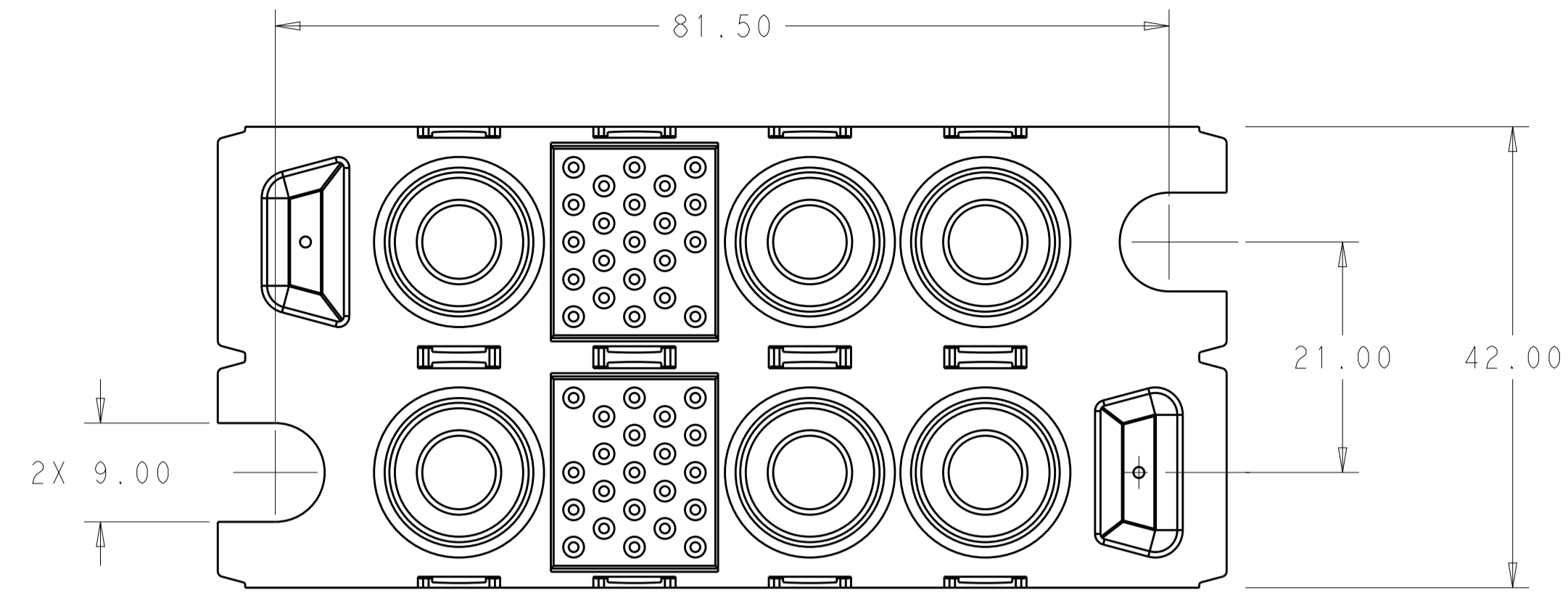
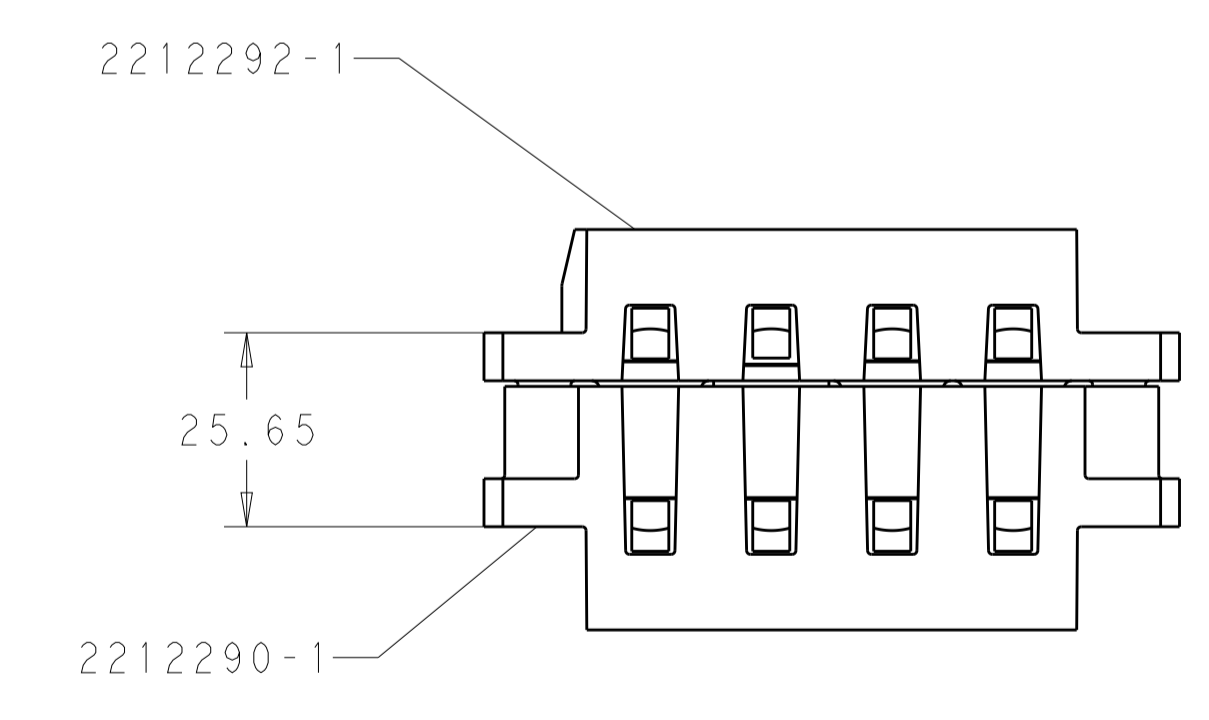
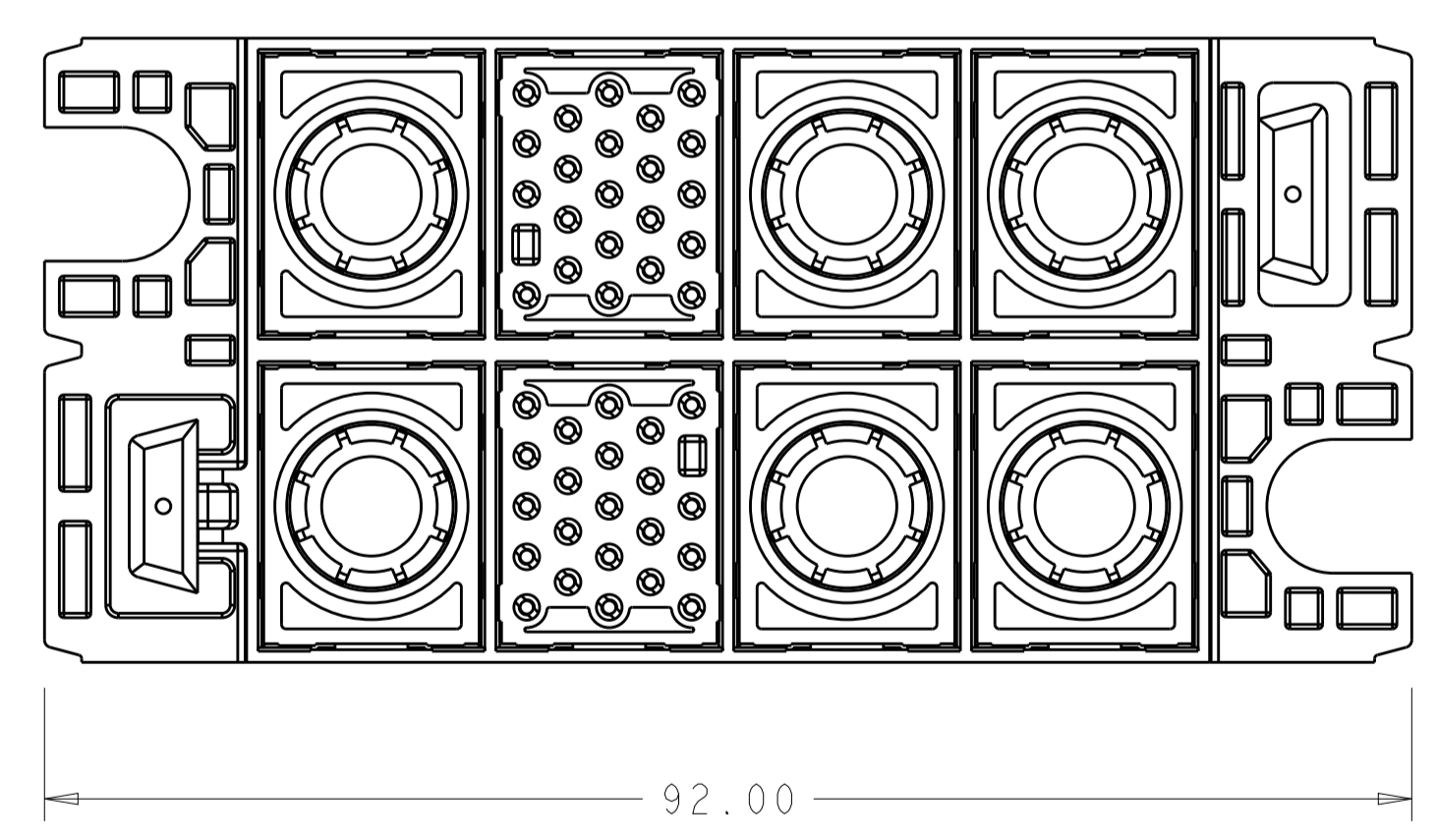
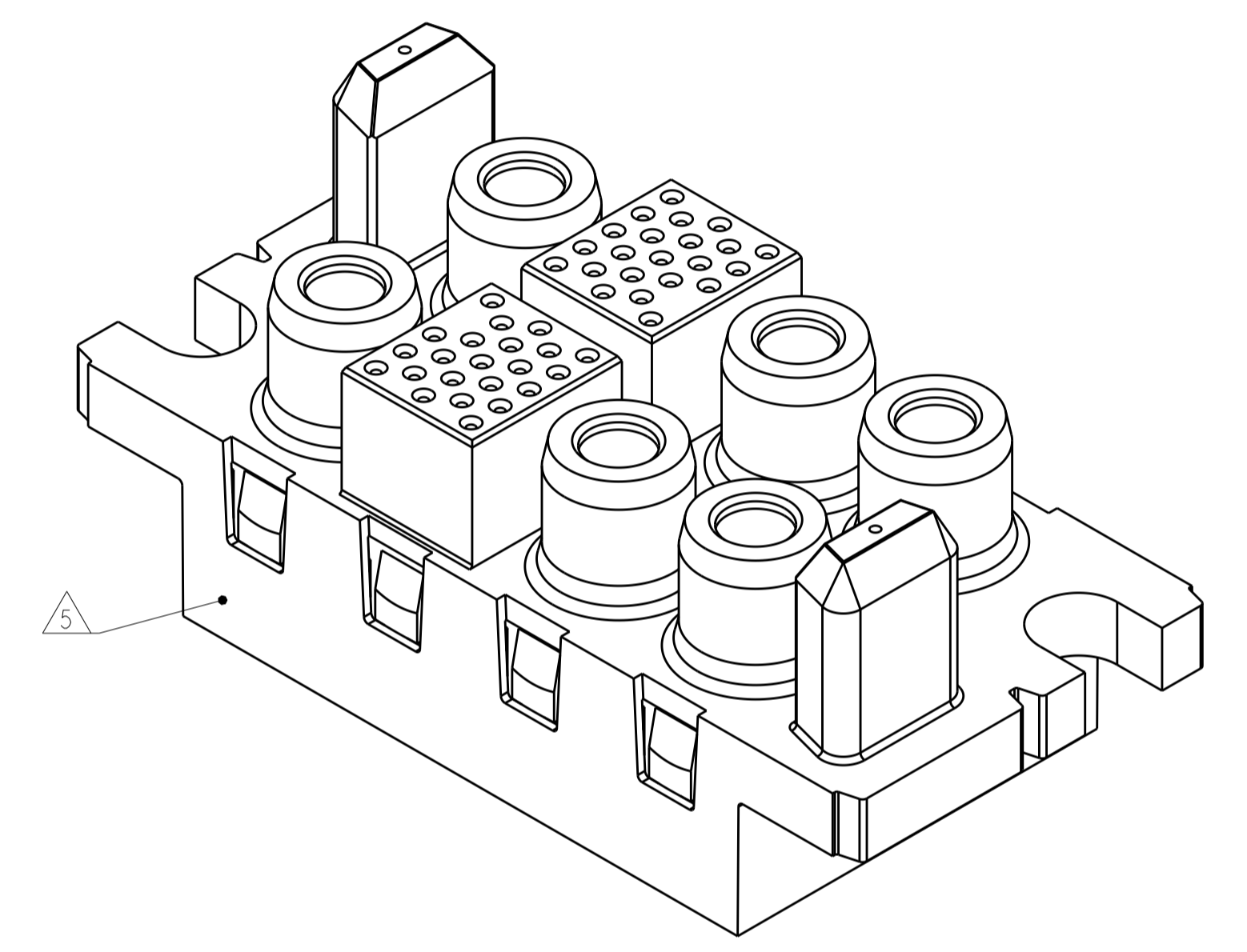
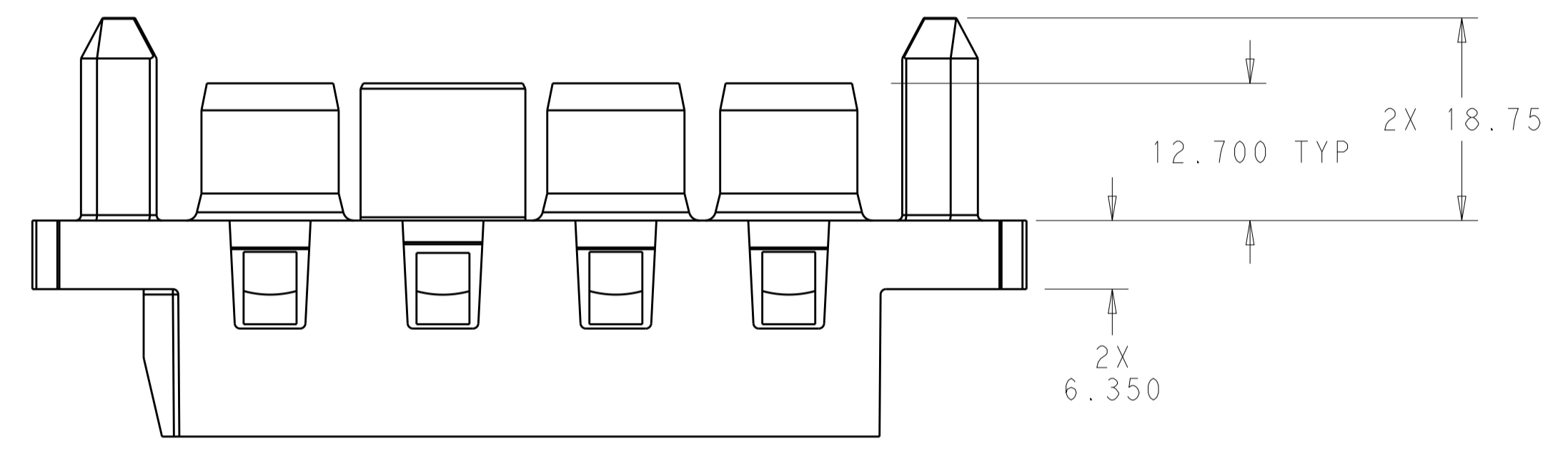
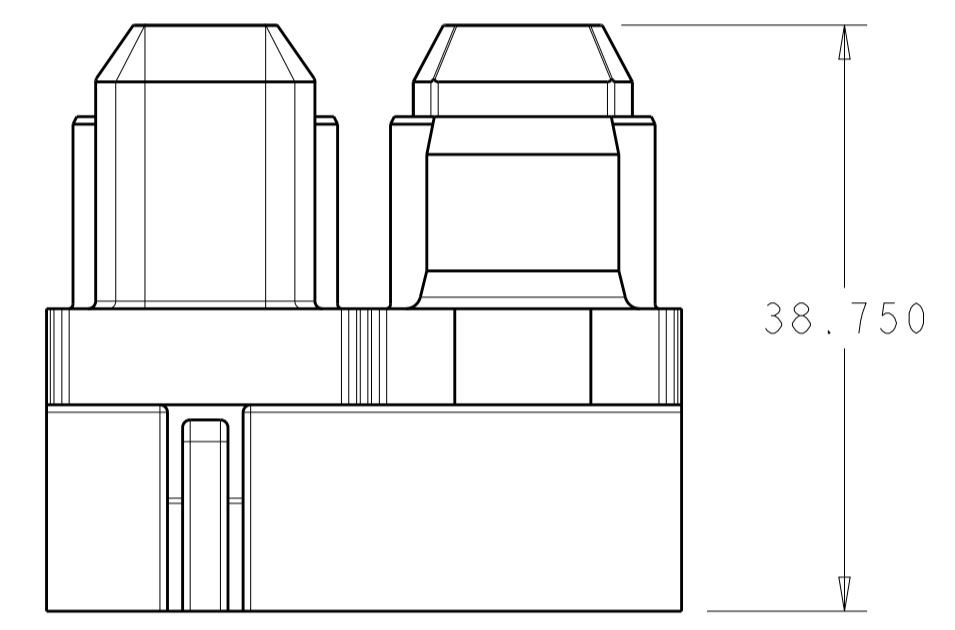


LOC	DIST	REV	DATE	BY	CHK	APPV
-	-	1	11SEP2014	RT	EW	
-	-	2	05NOV2014	RT	EW	
-	-	3	13JAN2015	RT	EW	
-	-	4	03FEB2015	RT	EW	



- △ HOUSING: THERMOPLASTIC, COLOR BLACK, FLAMMABILITY RATING UL 94 V-0.
- △ THIS ASSEMBLY TO MATE WITH TEC PART NUMBER 2212290-1.
- 3. RECOMMENDED SHOULDER SCREW:
2212056, FLOAT MOUNT
2212055, FIXED MOUNT
- △ RECOMMENDED PANEL CUTOUT FOR FRONT PANEL MOUNT APPLICATION.
RECOMMENDED PANEL THICKNESS 1.5 TO 1.78.
- △ DATE CODE AND PART NUMBER IN APPROXIMATE AREA SHOWN.



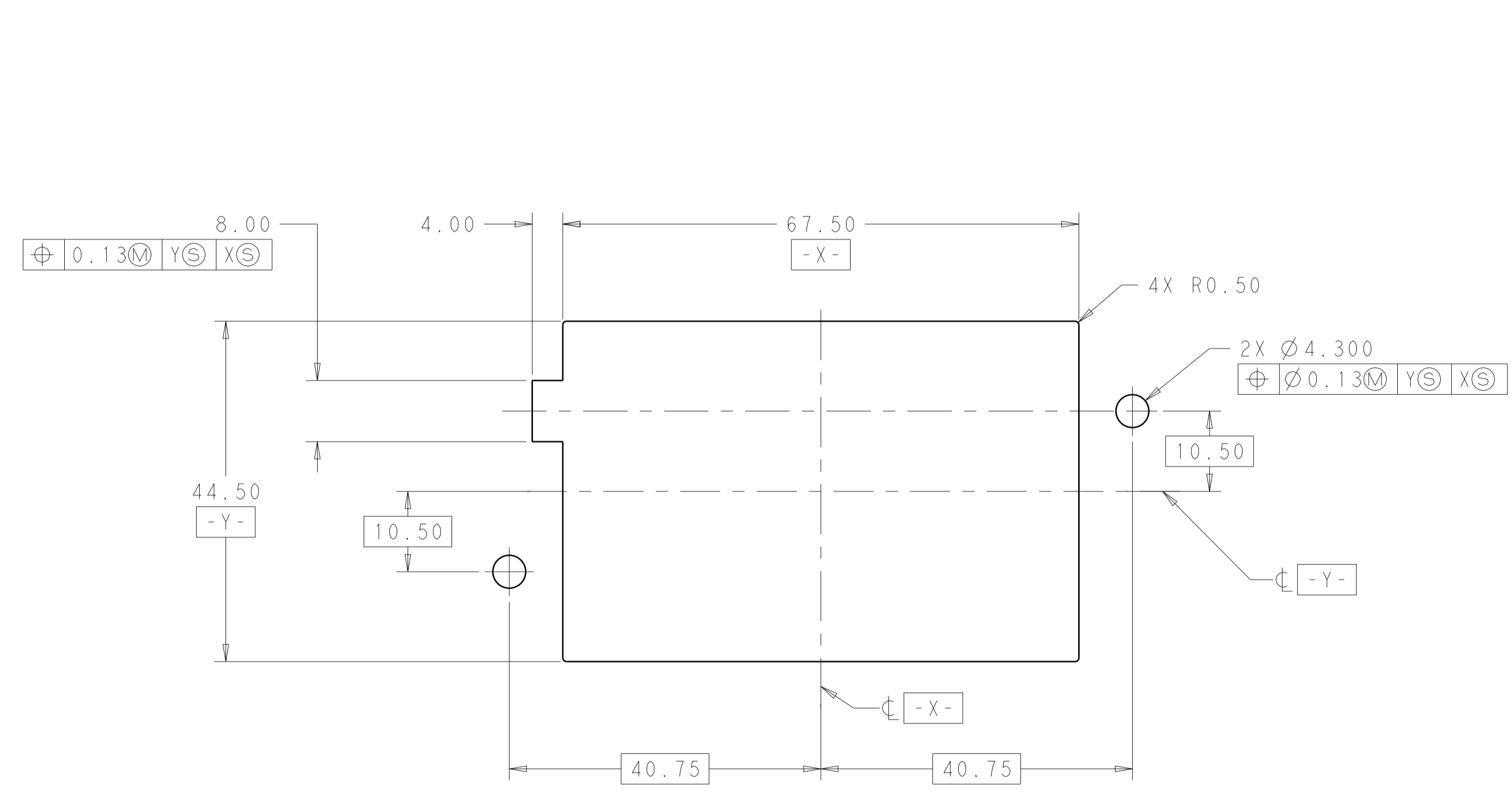
FULLY MATED ASSEMBLIES △
 SCALE 1:1

CONNECTOR, SOCKET FORGE 0x#0, 6x#4, 0x#8, 0x#12, 2x#22, 2212292-1
 DESCRIPTION PART NO.

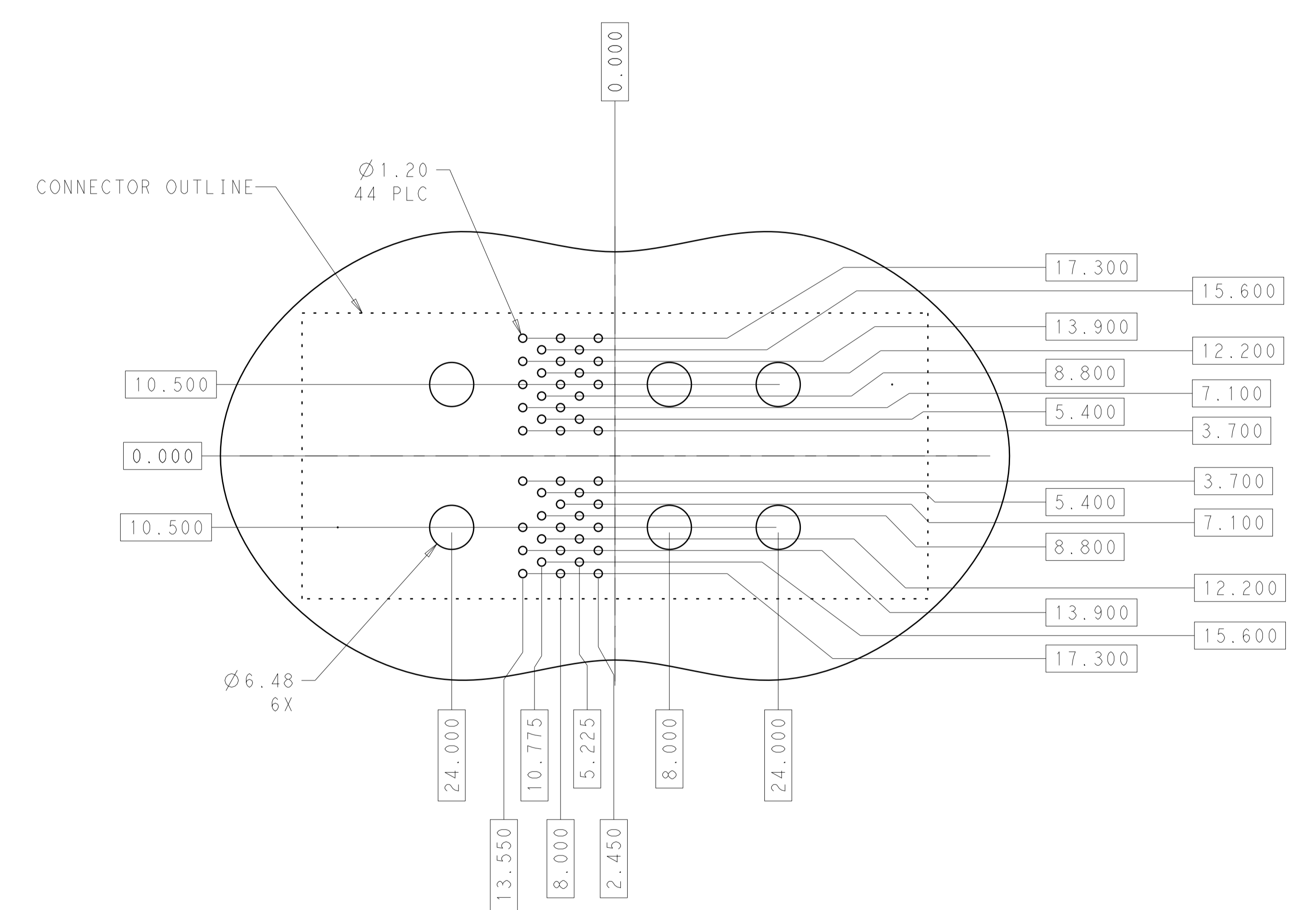
THIS PRINT IS
PRELIMINARY
 UNQUALIFIED PRODUCT
 CONTACT PRODUCT ENGINEERING
 BEFORE USING THIS PRINT

THIS DRAWING IS A CONTROLLED DOCUMENT.		OWN: R. IREDA 11SEP2014	TE Connectivity	
DIMENSIONS: mm		CHK: E. WICKES 05NOV2014		
TOLERANCES UNLESS OTHERWISE SPECIFIED:		APPV: S. STICKLER 05NOV2014		
0 PLC ±N/A	1 PLC ±N/A	PRODUCT SPEC	NAME: CONNECTOR, SOCKET, FORGE	
2 PLC ±0.40	3 PLC ±0.260	APPLICATION SPEC	0x#0, 6x#4, 0x#8, 0x#12, 2x#22	
4 PLC ±N/A	ANGLES ±N/A	FINISH	CONFIGURATION	
MATERIAL: △	FINISH: △	WEIGHT: -	SIZE: A1	CAGE CODE: 00779
		Customer Drawing	SCALE: 2:1	SHEET 1 OF 2

LOC	DIST	REV	DATE	BY	APPR
-	-	-	-	-	-
REVISIONS					



RECOMMENDED PANEL CUTOUT
SCALE 2:1



RECOMMENDED PCB LAYOUT
SCALE 2:1

THIS DRAWING IS A CONTROLLED DOCUMENT.		OWN P. IREDA	11SEP2014		TE Connectivity
DIMENSIONS: mm		CHK E. WICKES	05NOV2014		
TOLERANCES UNLESS OTHERWISE SPECIFIED:		APPR S. STICKLER	05NOV2014	NAME CONNECTOR, SOCKET, FORGE	
0 PLC ±N/A		PRODUCT SPEC		0x#0, 6x#4, 0x#8, 0x#12, 2x#22	
1 PLC ±N/A		APPLICATION SPEC		CONFIGURATION	
2 PLC ±0.40		WEIGHT		SIZE	
3 PLC ±0.260		RESTRICTED TO		A100779	
4 PLC ±N/A		SCALE		C=2212292	
ANGLES ±N/A		SHEET		2 OF 2	
FINISH ±N/A		REV		4	
MATERIAL		Customer Drawing			