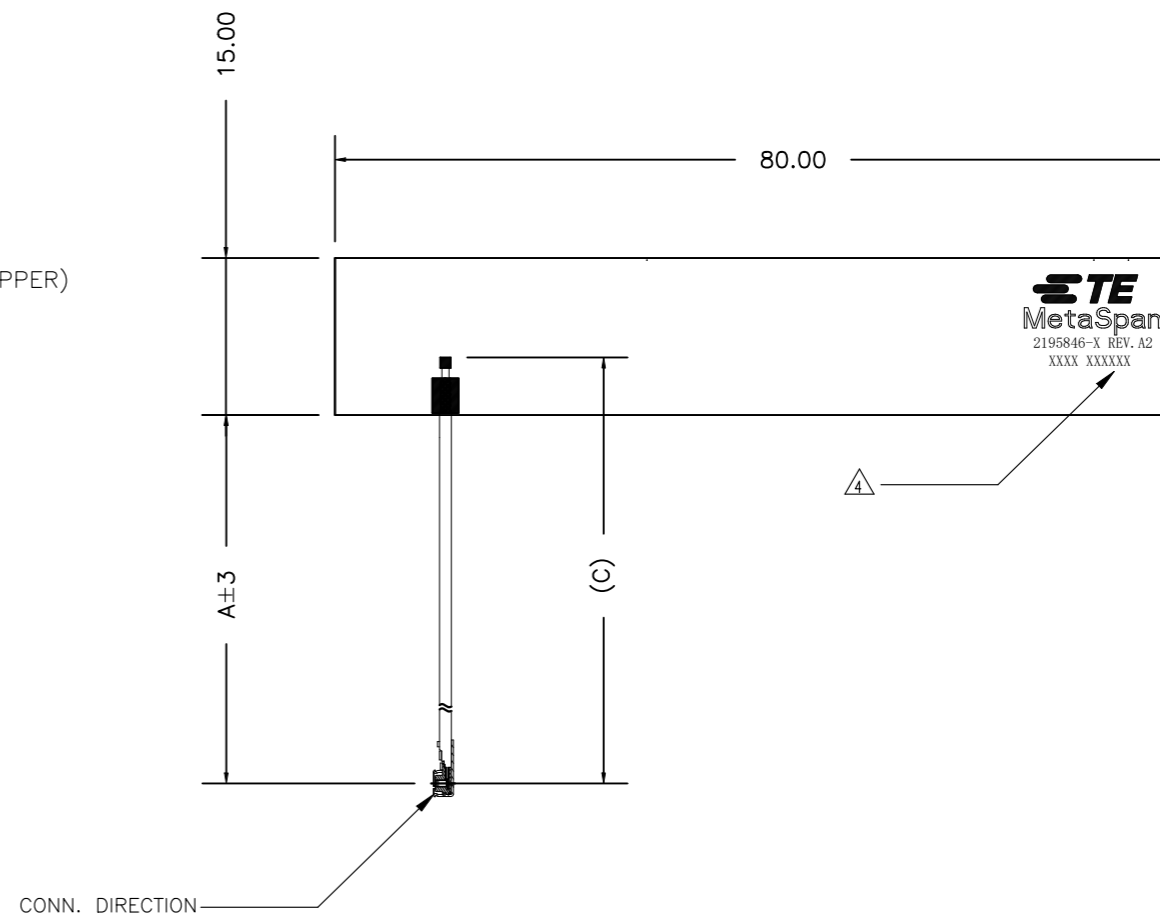
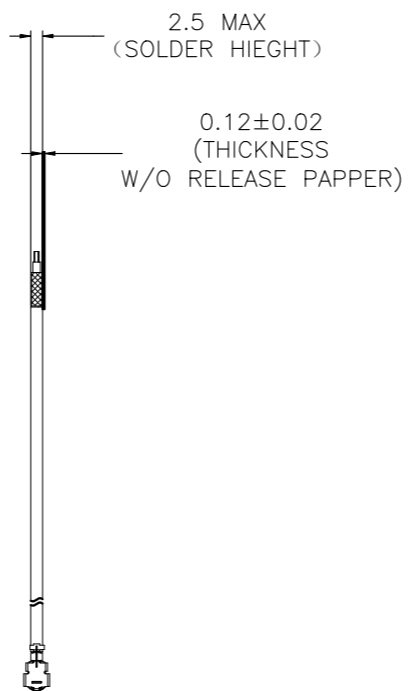
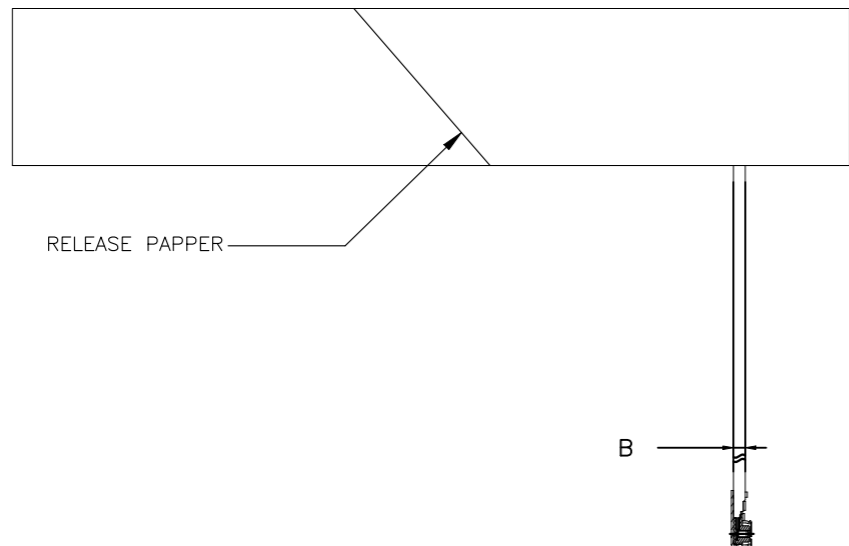


REVISIONS				
P	LTR	DESCRIPTION	DATE	APVD
	B	REVISED PER ECR-23-181571	17JUL2023	DC JH



- FABRICATE TO MEET IPC - 6013, CLASS 2.
INSPECT TO MEET IPC - A - 600, CLASS 2.
- CONSULT TE CONNECTIVITY DATA SHEET DS2195846
- MATERIAL :PI FILM +DOUBLE SIDE ADHESIVE
COAX CABLE DIA. 1.13 OR 1.37 I-PEX MHF-4L OR MHF TE APPROVED EQUIVALENT
- ▲ SILKSCREEN ; WHITE EXPOXY INK
A. TE LOGO P/N
B. WORD REV.,FOLLOWED BY THE LATEST REVISION LETTER AS SHOWN
C. XXXX-SILKSCREEN, 4 DIGITS DATE CODE. FIRST 2 DIGITS FOR WEEK CODE AND THE 2ND TWO DIGITS FOR THE YOUR CODE
D OTHERS:SPECIFIC TE SOURCE CODE NUMBER DIGITS AS REQUIRED
- GENERAL TOLERANCE : +/- 0.2mm
- PACKAGING : SINGULATED PARTS TO BE SECURELY BAGGED WRAPPED, BAGGED OR VACUUM PACKED IN BULK
- FINISH:
A: SOLDERMASK BOTH SIDE ORANGE
- CONSULT TE CONNECTIVITY DS 2195846

MHF	306	1.37	300	2195846-9
MHF4L	206	1.13	200	2195846-8
MHF4L	156	1.13	150	2195846-7
MHF4L	106	1.13	100	2195846-6
MHF4L	56	1.13	50	2195846-5
MHF	206	1.37	200	2195846-4
MHF	156	1.37	150	2195846-3
MHF	106	1.37	100	2195846-2
MHF	56	1.37	50	2195846-1
CONNECTOR	C	B	A	TE PART NO.

THIS DRAWING IS A CONTROLLED DOCUMENT.		DWN DC HSIANG 19DEC2019	TE Connectivity													
DIMENSIONS: mm		CHK SHIN HOO 06JUN2020														
TOLERANCES UNLESS OTHERWISE SPECIFIED:		APVD AMOS CHEAH 06JUN2020	NAME FPC ANT, MHF/MHF4L, 698-7125MHZ													
<table border="1"> <tr><td>0 PLC</td><td>± -</td></tr> <tr><td>1 PLC</td><td>± -</td></tr> <tr><td>2 PLC</td><td>± -</td></tr> <tr><td>3 PLC</td><td>± -</td></tr> <tr><td>4 PLC</td><td>± -</td></tr> <tr><td>ANGLES</td><td>± -</td></tr> </table>		0 PLC	± -	1 PLC	± -	2 PLC	± -	3 PLC	± -	4 PLC	± -	ANGLES	± -	PRODUCT SPEC -	RESTRICTED TO -	
0 PLC	± -															
1 PLC	± -															
2 PLC	± -															
3 PLC	± -															
4 PLC	± -															
ANGLES	± -															
MATERIAL -		FINISH -	APPLICATION SPEC -	SIZE A3												
		WEIGHT 0	CAGE CODE 00779	DRAWING NO C-2195846												
CUSTOMER DRAWING			SCALE 1:1	SHEET 1 OF 1												
			REV B													