

4

3

2

1

THIS DRAWING IS UNPUBLISHED.

RELEASED FOR PUBLICATION

© COPYRIGHT 2011 BY TYCO ELECTRONICS CORPORATION. ALL RIGHTS RESERVED.

LOC
DW

DIST

REVISIONS

P	LTR	DESCRIPTION	DATE	DWN	APVD
A5		ECR-17-013294	11SEP'17	T.Q	W.H

DIM A

FOR PIN1 MARK

4.30

3.50

Ø1.80

RECOMMENDED PICK-UP AREA

0.80±0.05
2 PLC

0.80MIN.
2 PLC

3.85±0.05

1.10±0.05
2 PLC

0.60MIN.

1.20±0.05

DIM B±0.05

0.85MIN.

CONNECTOR OUTLINE

0.80±0.05
2 PLC

0.70MIN.
2 PLC

3.85±0.05

0.80±0.05
2 PLC

0.60MIN.

1.20±0.05

DIM B±0.05

0.85MIN.

CONNECTOR OUTLINE

DIM C

DIM B±0.15

1.20±0.15

1.20

1.40

1.1

0.20±0.03

0.30

RECOMMENDED PCB LAYOUT
ONLY FOR 4~6 PINRECOMMENDED PCB LAYOUT
ONLY FOR 2 & 3 PIN

0.1 MAX.
SOLDER LEAD

NOTE:

1. MATERIAL:

1.1 HOUSING: LCP WITH 30% GF, UL 94V-0, BLACK COLOR.

1.2 CONTACTS: PHOSPHOR BRONZE 0.20±0.05mm THICKNESS.

1.3 PEGS: BRASS 0.30±0.05mm THICKNESS.

2. FINISH:

2.1 CONTACTS: GOLD FLASH PLATED ON CONTACT AREA, WITH ENTIRE CONTACT GOLD FLASH PLATED OVER 1.27µm [50u"] MIN. NICKEL UNDERPLATED OVERALL.

2.2 PEGS: 2.54µm [100u"] MIN. MATTE-TIN OVER 1.27µm [50u"] MIN. NICKEL UNDERPLATED OVERALL.

3. REFLOW SOLDER CAPABLE TO 260°C PER TYCO TEST SPEC. 109-201, CONDITION B.

4. NO TYCO LOGO AND DATE CODE ON THE PRODUCT.

5. RECOMMENDED TO MATE WITH TE 1909783-X

0.067g	7.44	6.0	9.0	06	1909782-5
0.053g	6.24	4.8	7.8	05	1909782-4
0.040g	5.04	3.6	6.6	04	1909782-3
0.027g	3.84	2.4	5.4	03	1909782-2
0.015g	2.64	1.2	4.2	02	1909782-1
WEIGHT	C	B	A	NO. OF CONTACTS	PART NUMBER

THIS DRAWING IS A CONTROLLED DOCUMENT.		DWN F. YANG 20MAY2009	TE Connectivity 1.2mm PITCH, BOARD TO WIRE CONNECTOR WAFER, TOP ENTRYX				
DIMENSIONS: mm		CHK S. CHIEN 20MAY2009					
TOLERANCES UNLESS OTHERWISE SPECIFIED:		APVD W. KODAMA 20MAY2009					
0 PLC ± - 1 PLC ± 0.3 2 PLC ± 0.25 3 PLC ± 0.15 4 PLC ± - ANGLES ± 3°		NAME					
MATERIAL SEE NOTE		FINISH SEE NOTE	PRODUCT SPEC 108-57767	SIZE A3	CAGE CODE 00779	DRAWING NO C=1909782	RESTRICTED TO
CUSTOMER DRAWING			SCALE	SHEET	1 OF 3	REV	A5

1470-19 (1/08)

4

3

2

1

THIS DRAWING IS UNPUBLISHED.

RELEASED FOR PUBLICATION

LOC

DIST

REVISIONS

© COPYRIGHT 2011 BY TYCO ELECTRONICS CORPORATION. ALL RIGHTS RESERVED.

DW

P

LTR

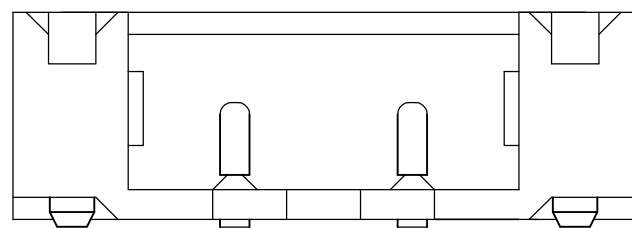
DESCRIPTION

DATE

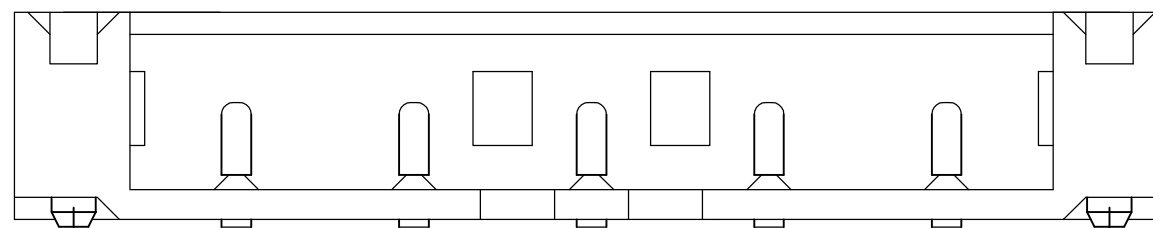
DWN

APVD

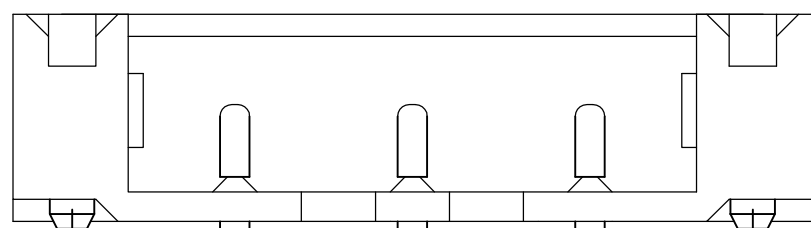
SEE SHEET 1.



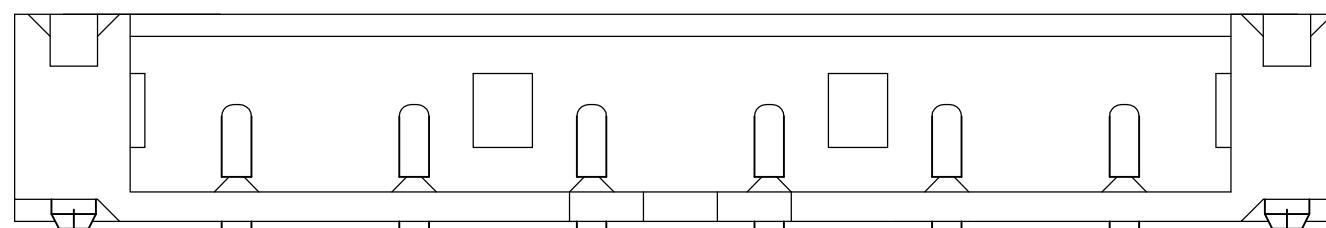
FOR 2 PIN



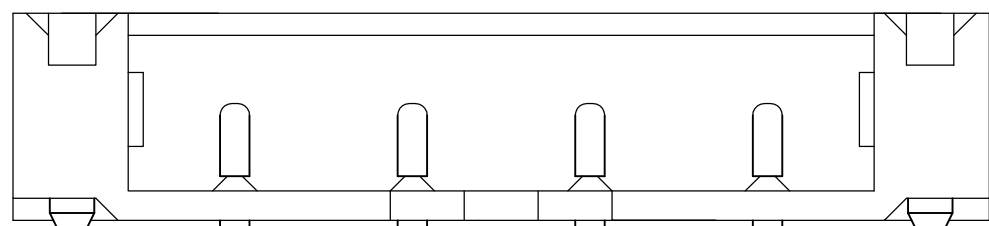
FOR 5 PIN



FOR 3 PIN



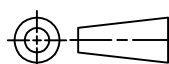
FOR 6 PIN



FOR 4 PIN

THIS DRAWING IS A CONTROLLED DOCUMENT.

DIMENSIONS:
mm



TOLERANCES UNLESS OTHERWISE SPECIFIED:

- 0 PLC ± -
- 1 PLC ± 0.3
- 2 PLC ± 0.2
- 3 PLC ± 0.15
- 4 PLC ± -
- ANGLES ± 3'

MATERIAL

FINISH

DWN	-
CHK	-
APVD	-
PRODUCT SPEC	-
APPLICATION SPEC	-
WEIGHT	-
CUSTOMER DRAWING	-



NAME
1.2mm PITCH, BOARD TO WIRE CONNECTOR
WAFER, TOP ENTRYX

SIZE	CAGE CODE	DRAWING NO	RESTRICTED TO
A3	00779	C=1909782	-

SCALE	SHEET	REV
-	2 of 3	A5

THIS DRAWING IS UNPUBLISHED.

RELEASED FOR PUBLICATION

LOC DW DIST

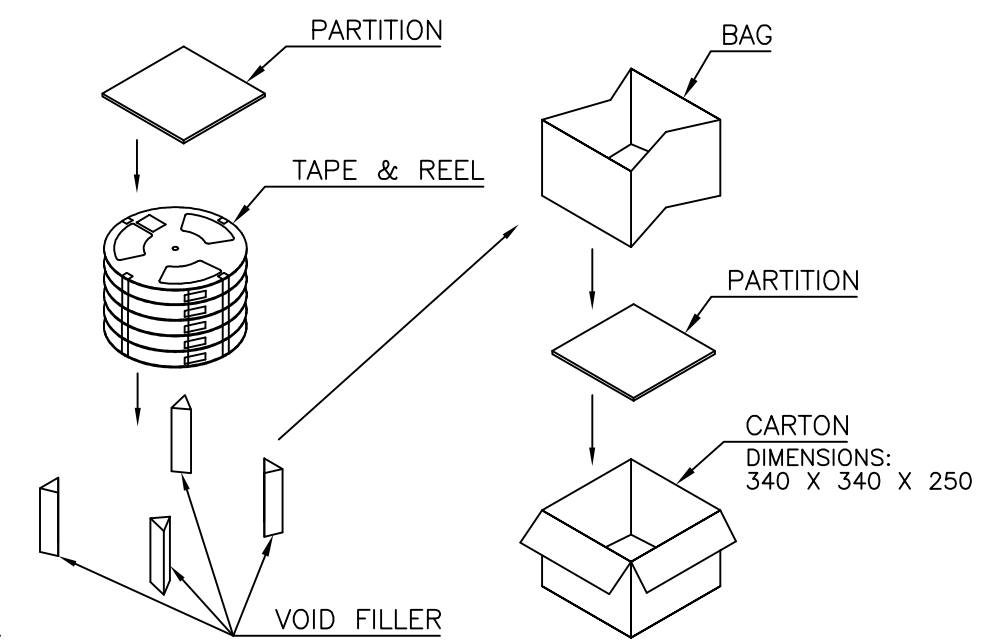
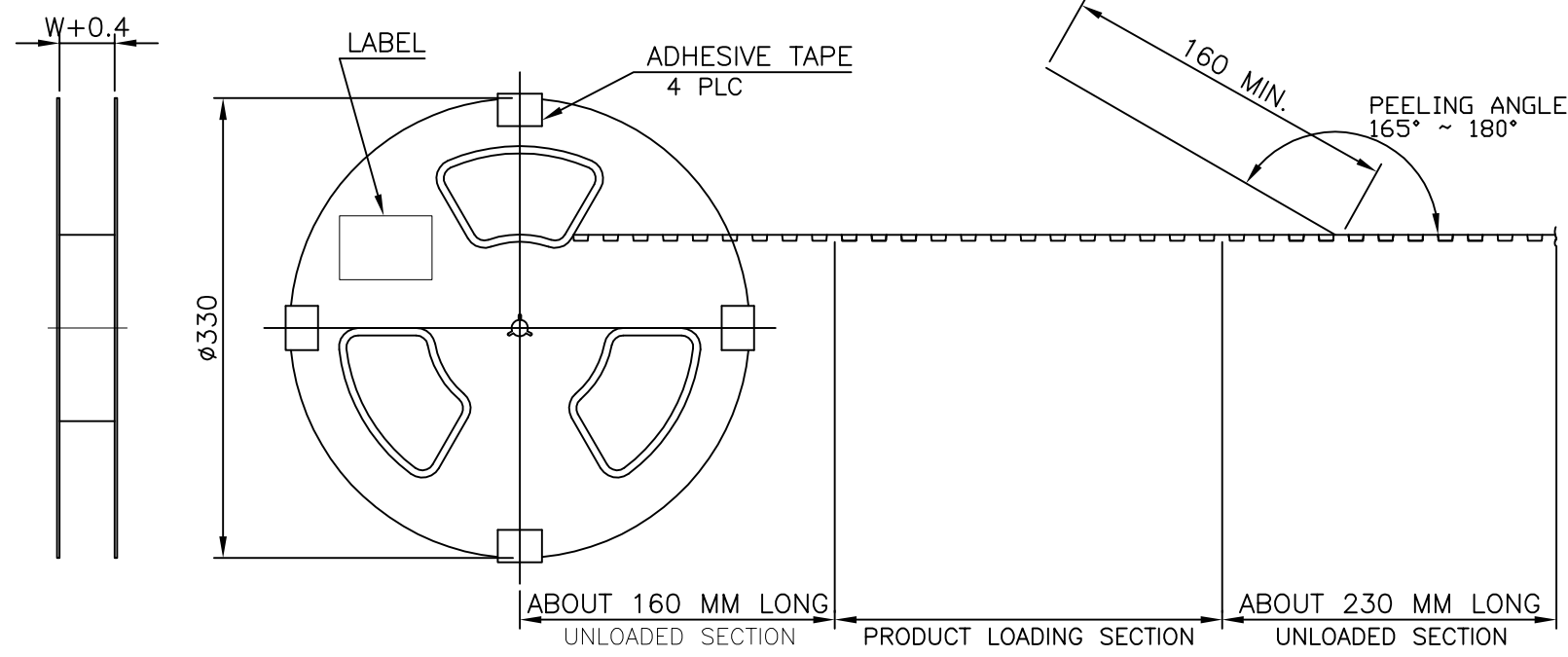
REVISIONS

© COPYRIGHT 2011 BY TYCO ELECTRONICS CORPORATION. ALL RIGHTS RESERVED.

P	LTR	DESCRIPTION	DATE	DWN	APVD
		SEE SHEET 1.			

D

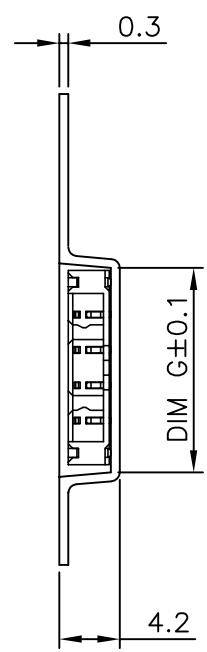
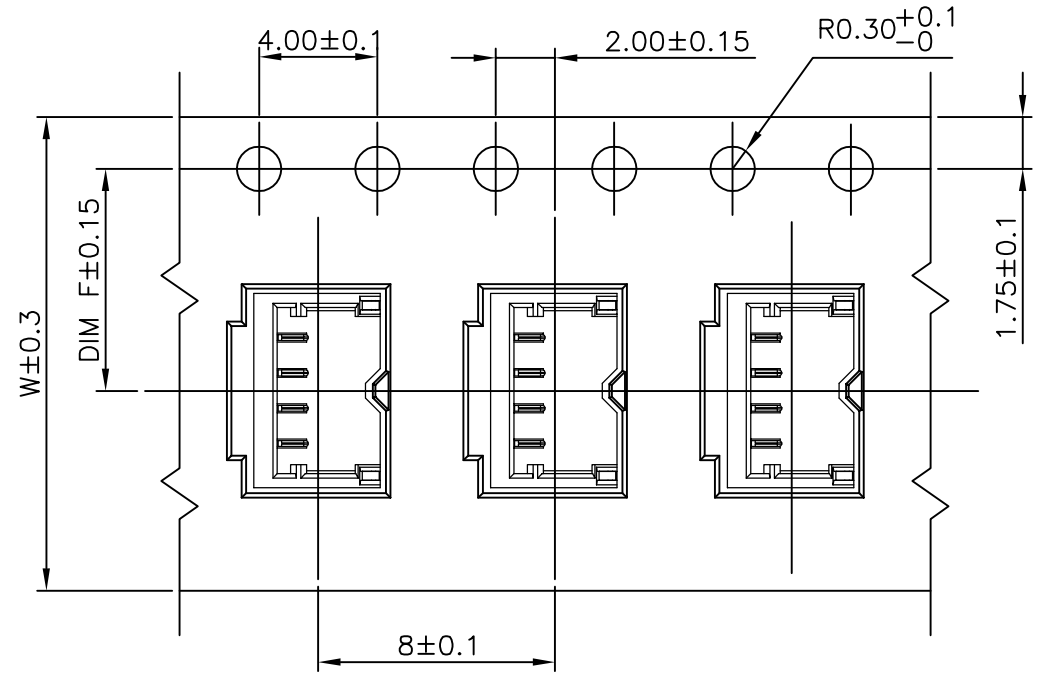
D



TOP OF TAPE →

C

C



NOTES :

- MATERIAL :
 - COVER TAPE : P.S., COLOR: TRANSPARENT
 - CARRIER TAPE : P.S.
 - PARTITION : EPE
 - BOX: CORRUGATED FIBER
- DIMENSION :
 - REEL : SEE DRAWING
 - BOX : SEE DRAWING
- CARRIER TAPES, COVER TAPES, REELS AND TAPED COMPONENTS MUST MEET THE REQUIREMENTS DEFINED PER EIA-481-B.
- PEELING RESISTANCE : 10gf~130gf
- PEELING SPEED : 300mm/MINUTES

DIM G	DIM W	DIM F	PCS/TAPE	REELS/CARTON	QUANTITY (PCS)	G/W (Kg)	N/W (Kg)	NO. OF CONTACTS	PART NUMBER
9.35	24.0	11.50	4000	7	28000	6.71	2.11	06	1909782-5
8.15	16.0	7.50	4000	7	28000	5.94	1.67	05	1909782-4
6.95	16.0	7.50	4000	7	28000	5.53	1.26	04	1909782-3
5.75	16.0	7.50	4000	7	28000	5.12	0.85	03	1909782-2
4.55	12.0	5.50	4000	7	28000	4.66	0.47	02	1909782-1

B

B

A

A

THIS DRAWING IS A CONTROLLED DOCUMENT.

DIMENSIONS: mm	TOLERANCES UNLESS OTHERWISE SPECIFIED:	DWN	TE Connectivity
	0 PLC ± -	CHK	NAME
	1 PLC ± 0.3	APVD	1.2mm PITCH, BOARD TO WIRE CONNECTOR WAFER, TOP ENTRYX
	2 PLC ± 0.2	PRODUCT SPEC	SIZE
	3 PLC ± 0.15	APPLICATION SPEC	CAGE CODE
	4 PLC ± -	WEIGHT	DRAWING NO
	ANGLES ± 3'	CUSTOMER DRAWING	RESTRICTED TO
MATERIAL	FINISH		A3 00779 C=1909782
		SCALE	SHEET 3 of 3
			REV A5