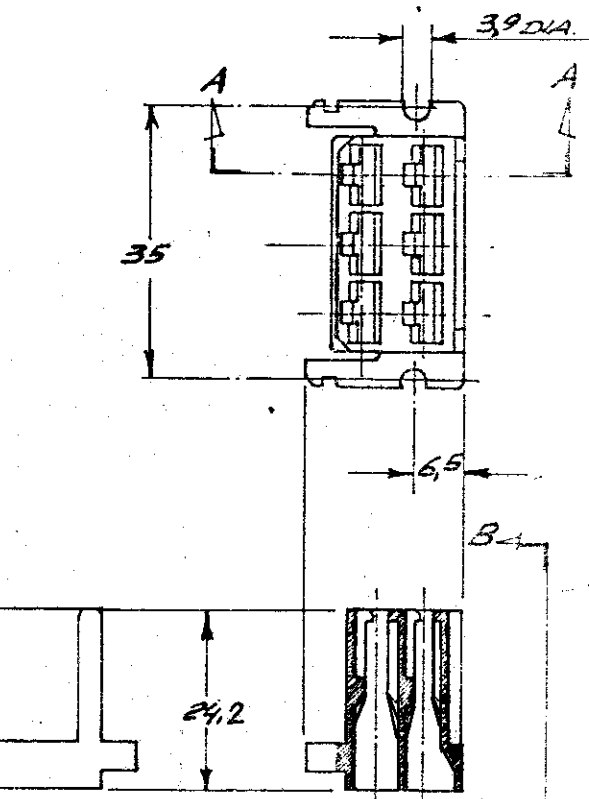
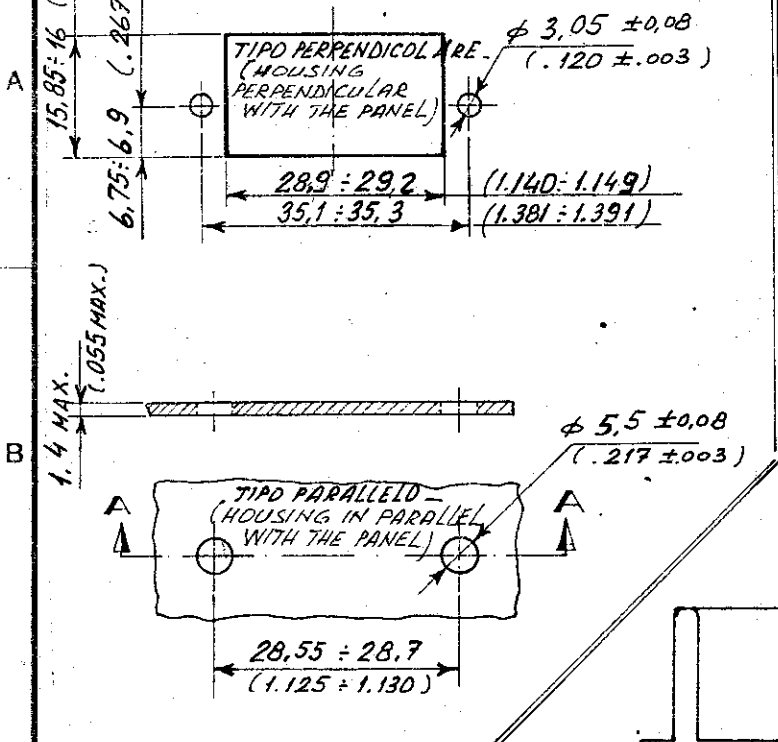


**DIME DI FORATURA**  
(RECOMMENDED PANEL CUTOUT)

SCALA NON IMPEGNATIVA  
(DO NOT SCALE)  
DIMENSIONI IN mm  
DIMENSIONS IN mm

**METRIC**

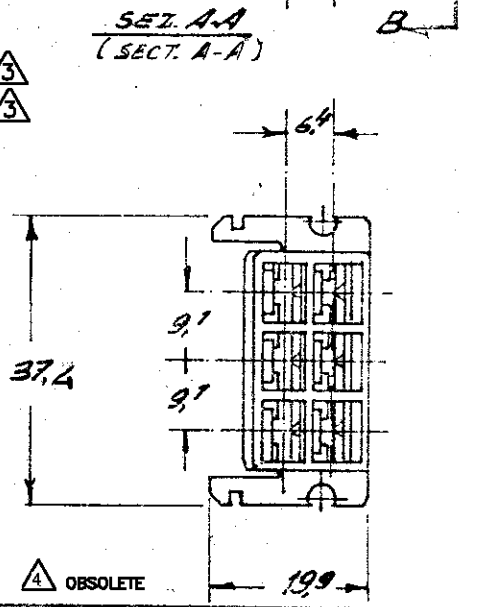
PROIEZIONE EUROPEA  
(EUROPEAN PROJECTION)



NOTE: **NON PRODOTTO DALL' TE ITALIA; SOLO PER PRODUZIONE TE GERMANY. (NOT PRODUCED BY TE ITALY; FOR TE GERMANY PRODUCT ONLY)**

OBsolete PARTS: OBSOLETE CIS STREAMLINING PER D.RENAUD/D.SINISI

NOTE (NOTES)	COLORE (COLOUR)	MATERIALE (MATERIAL)	NUMERO (PART NUMBER)
SEE NOTE (2)	CLEAR	180904-0	3-180904-0
NON IN PRODUZIONE (NOT AVAILABLE)	NEUTRO (CLEAR)	POLIAMMIDE 6.6 UNFILL (PA 6.6 F.R. 94V-0)	3-180904-0
	ARANCIO (ORANGE)		<del>180904-0</del>
	VIOLETTA (VIOLET)		<del>180904-0</del>
	GRIGIO (GRAY)		<del>180904-0</del>
	MARRONE (BROWN)		<del>180904-0</del>
	NERO (BLACK)		<del>180904-0</del>
	GIALLO (YELLOW)		<del>180904-0</del>
	BLU (BLUE)		<del>180904-0</del>
	VERDE (GREEN)		<del>180904-0</del>
	ROSSO (RED)		<del>180904-0</del>
	NEUTRO (CLEAR)		180904-0



**SAME AS 180904-0 EXCEPT PACKAGING: TWO PLASTIC BAG WITH 10 PIECES ON CARTON BOX / 100**

FINITURA / COLORE (FINISH / COLOUR)	MATERIALE (MATERIAL)	NUMERO (PART NUMBER)
<b>CUSTOMER DWG. FOR REFERENCE ONLY</b>	<b>DISEGNO PER CLIENTE SOLO PER RIFERIMENTO</b>	

AP2	ECR-10-022530	KK	11FEB11
AP1	REV PER ECO-10-000445	KK	JAN10
AP	Revised by E500-011-97	U	PROV
AN	Revised by E500-011-97	AP	EN 11
AM	Revised by E500-0052-97	AP	OCT 97
AL	Revised for ET00-0005-97	EN	101
N	RIVISTO E RIDISEGNATO; ELIMINATI I PINS CON NUMERAZ. SERIE RATA (REVISED & REDRAWN; OBSOLETE PINS WITH EXTRA NUMBERING)	EN	6-86
REV.	REVISIONI (REVISION RECORD)	DIS.	DATA (DATE)

THIS DRAWING IS UNPUBLISHED - RELEASE FOR PUBLICATION

© COPYRIGHT 19 BY TE INCORPORATED, HARRISBURG, PA ALL INTERNATIONAL RIGHT RESERVED TE PRODUCTS MAY BE COVERED BY U.S. AND FOREIGN PATENT AND/OR PATENT PENDING

TOLLERANZE: SE NON DIVERSAMENTE SPECIFICATO (TOLERANCES UNLESS OTHERWISE SPECIFIED)

DIAM. ISOLANTE (INS. DIA. RANGE)  $\pm 0.4$

RANGO FILO (WIRE RANGE)  $\pm 0.4$

SCALA (SCALE)  $\pm 0.4$

ANGOLI (ANGLES)  $\pm 2^\circ$

DIS. (DR.)  $\pm 0.4$

DESCRIZIONE (DESCRIPTION) **6 WAY FASTIN-FASTON REC. HOUSING - .250" SER.**

LOC. SIZE NUMERO (DWG. NO.) **ALA C-180904**

REV. AP2

Foglio 1 di 1

DISTRIBUZIONE (PRINT DIST.)