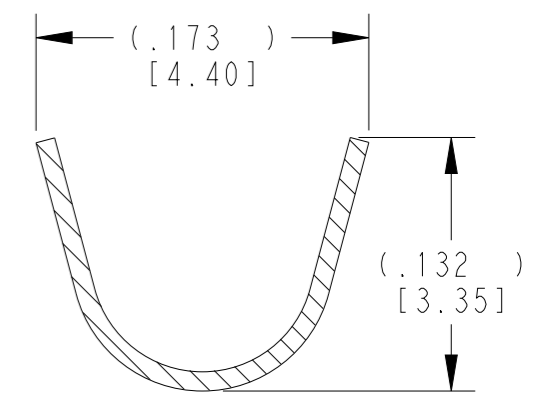
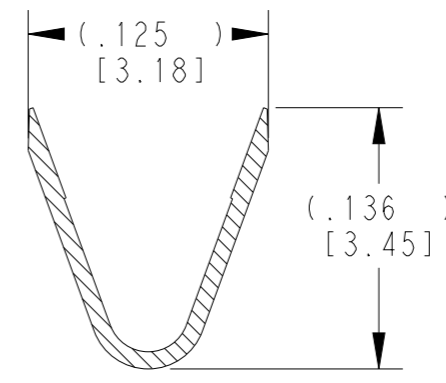
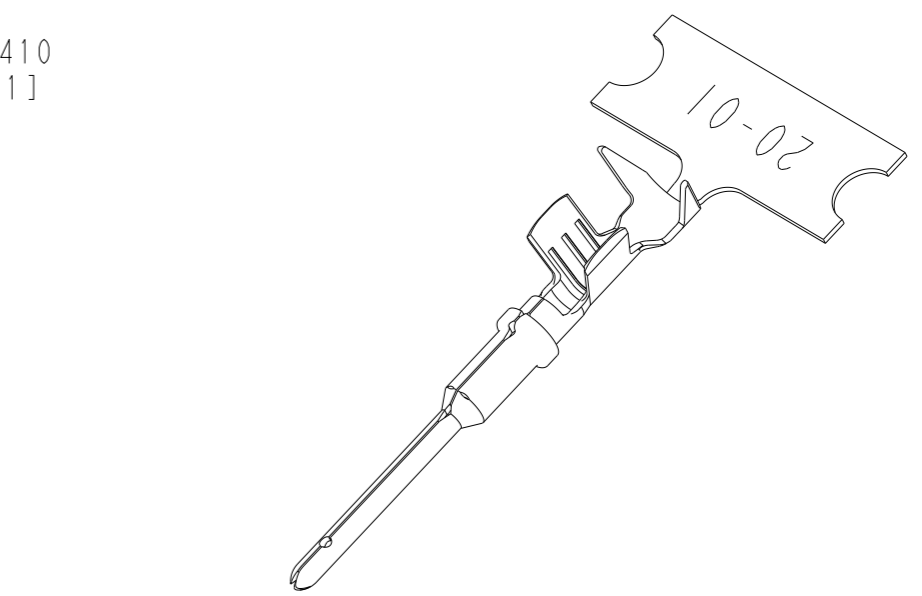
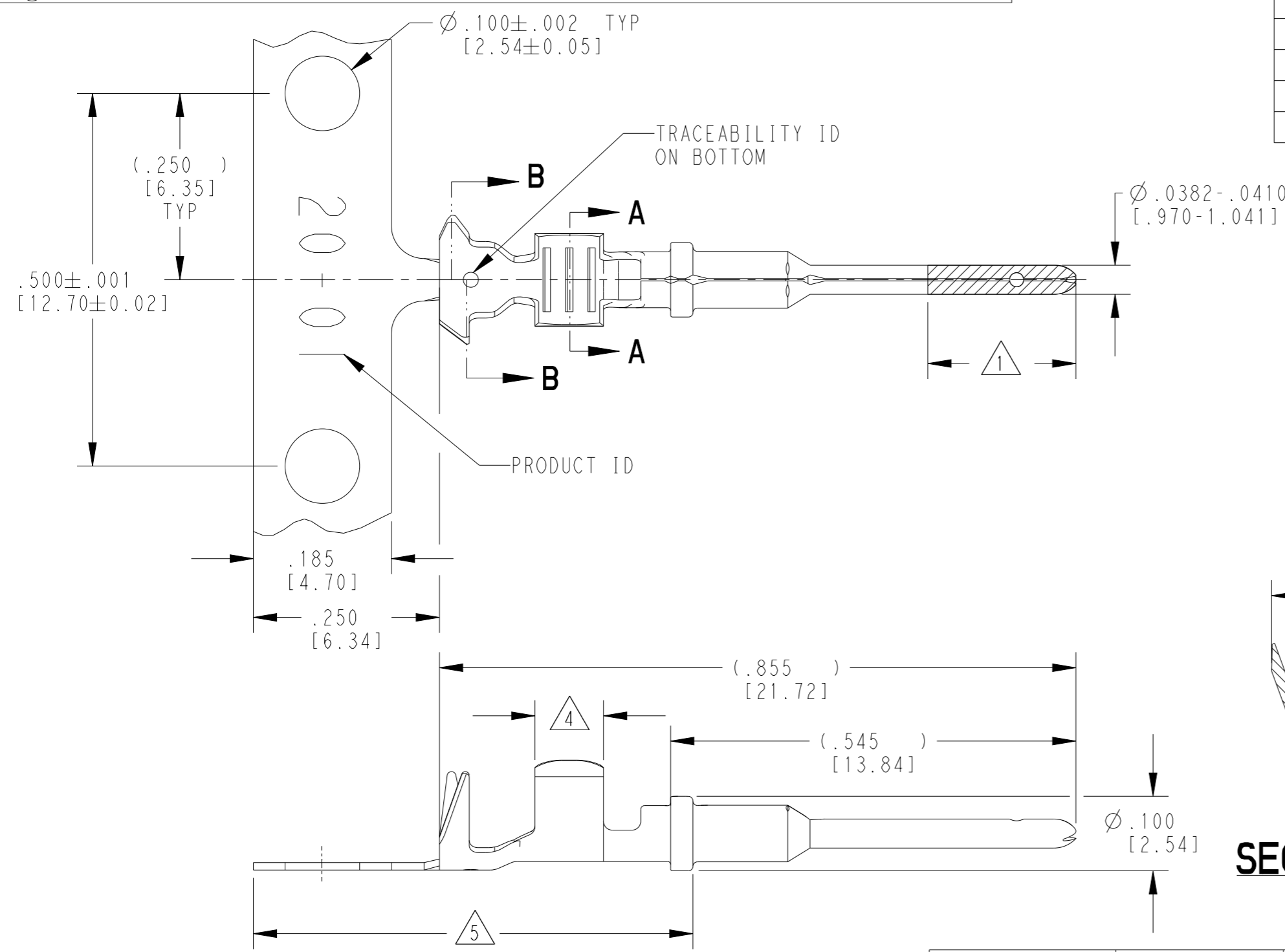


THIS DRAWING IS UNPUBLISHED. RELEASED FOR PUBLICATION 2018
 © COPYRIGHT 2018 BY TE ALL RIGHTS RESERVED.

P	LTR	DESCRIPTION	DATE	DWN	APVD
D		REVISED PER E.O. P20044	03NOV2008		RDR
E		REVISED PER E.O. P20392	03DEC2009		RDR
F		REVISED PER PCN E-18-007949	23MAY2018	DD	DM
G		REVISED PER PCN-24-210586	10JUN2024	PS	DM



- 5 TIN PLATING MAY BE IN THIS REGION.
- 4 TIN PLATED REGION.
- 3 MATERIAL: .010 [0.25] THICK COPPER ALLOY.
- 2 WIRE RANGE: 22 AWG TO 16 AWG [0.35-1.50 mm²].
INSULATION RANGE: Ø.075-.125 [Ø1.91-3.18].
- 1 GOLD PLATED REGION.

NOTES: UNLESS OTHERWISE SPECIFIED

TE INTERNAL PN	DEUTSCH PN	REV	PLATING
1060-20-0122	1060-20-0122	L	Ni/Cu Overall
1060-20-0144	1060-20-0144	L	Selective Au, Ni/Cu Overall, Sn/Ni/Cu Wire Barrel
1060-20-0177	1060-20-0177	L	Sn/Ni/Cu Overall

THIS DRAWING IS A CONTROLLED DOCUMENT.		DWN J. APOSTOL 01DEC2009	TE Connectivity	
DIMENSIONS: INCHES [mm]		CHK D. MEYER 02DEC2009		
TOLERANCES UNLESS OTHERWISE SPECIFIED:		APVD R. REED 03DEC2009	NAME STAMPED CONTACT PIN SIZE 20	
0 PLC ± 1 PLC ± 2 PLC ± 3 PLC ±.025 [0.64] 4 PLC ± ANGLES ±		PRODUCT SPEC 108-151000	SIZE A3	
MATERIAL 3		APPLICATION SPEC 114-151003	CAGE CODE 4AFU8	DRAWING NO C-1060-20-01XX
FINISH SEE TABLE		WEIGHT 0.16 g	RESTRICTED TO -	SCALE 6:1
		CUSTOMER DRAWING	SHEET 1 OF 1	REV G