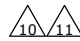
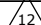
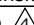
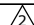
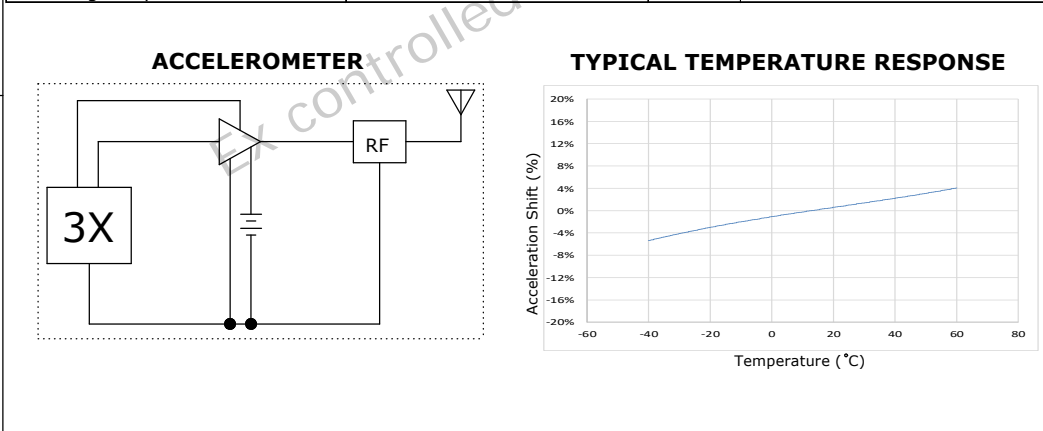
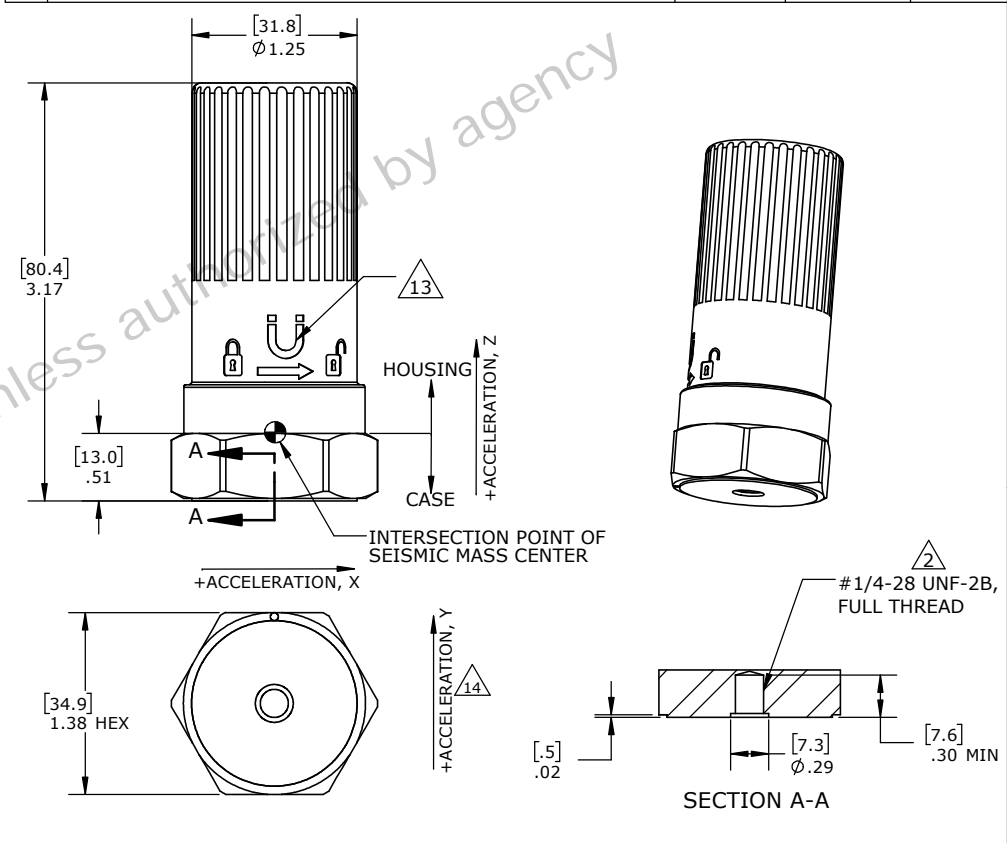


SPECIFICATIONS:			
All values are typical at +24°C (+75°F), 80Hz, unless otherwise stated.			
Parameters	Value	Unit	Notes
Dynamic Range	±25	g	
Calibration Tolerance	±3	%	Reading
Frequency Response ±3dB	2-10000	Hz	
Natural Frequency	35	KHz	Analog Signal Test, Typical
Transverse Sensitivity	<8	%	
Temperature Response	See typical temperature response curve		
Non-Linearity	±1(±2)	%	FSO (Reading)
Residual Noise (passband)	<9	mg RMS	72dB Dynamic Range
Shock Limit	2000	g	
Temperature Sensor Tolerance	± 2	°C	-40 to +60 °C
Power Supply 	+3.6	Vdc	Replaceable Battery Soft LS17330
Total Current Drawn (Tx)	17	mA	Typical
Operating Temperature	-40 to +60	°C	With Battery
Storage Temperature	-40 to +80	°C	Without Battery
Humidity Limits	<95	%	Non-condensing
Environmental Rating	IP66 & IP67		
Wireless Protocol	BLE 5		
Work Frequency	2.4	GHz	
Maximum Transmit Power	0	dBm	
Carrier Frequency Offset	0±150	KHz	
Packet Error Rate 	30.80	%	
Receiver Sensitivity	-129	dBm	
Battery Life 	Refer to datasheet		
Interface	Refer to datasheet		
Material	Stainless Steel 316L (case) and Plastic PET (housing)		
Weight	155	g	Without Battery
Mounting Torque 	17	Ib-In	




REVISIONS				
REV	DESCRIPTION	DRAWN/DATE	CHECKED/DATE	APPR./DATE
A	INITIAL RELEASE.	JZ/4-19-23	PP/4-19-23	PL/4-19-23
B	Tx POWER, RECEIVE SENSITIVITY, BATTERY LIFE SEPC UPDATE.	JZ/5-4-23	PP/5-4-23	PL/5-4-23



Manufacturer: Measurement  
Specialties (China) LTD  
No.26 LangShan Road,  
518057 Shenzhen-Nanshan  
District China.

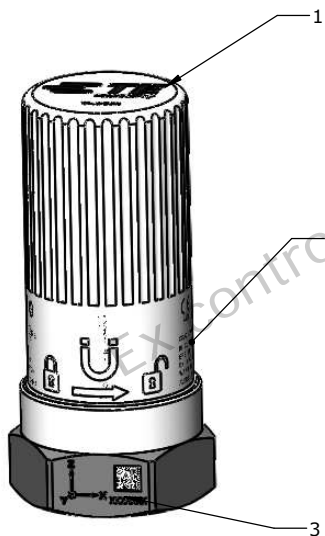
UNLESS OTHERWISE SPECIFIED:		NAME	DATE
DIMENSIONS ARE IN INCHES [MM]		DRAWN	J. Zhao 9-21-22
TOLERANCES:		CHECKED	A. Rao 9-21-22
ANGULAR ±5°		ENG APPR.	P. Li 9-21-22
TWO PLACE DECIMAL ±.03 [.8]			
THREE PLACE DECIMAL ±.010 [.25]			
MATERIAL			
FINISH			
PROPRIETARY AND CONFIDENTIAL: THE INFORMATION CONTAINED IN THIS DRAWING IS THE SOLE PROPERTY OF MEASUREMENT SPECIALTIES, INC. ANY REPRODUCTION IN PART OR AS A WHOLE WITHOUT THE WRITTEN PERMISSION OF MEASUREMENT SPECIALTIES, INC. IS PROHIBITED.		COMMENTS:  DO NOT SCALE DRAWING  INTERPRET GEOMETRIC TOLERANCING PER ANSI Y14.5M-1994	



TITLE:		
MODEL 8531N-EX, ACCELEROMETER		
SIZE	DWG. NO.	REV
B	OD-8531N-EX	B
SCALE:	WEIGHT:	SHEET 1 OF 2

# NOTES:

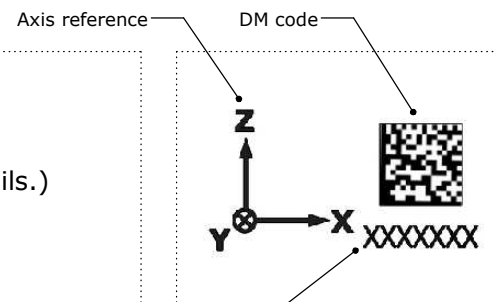
- 1 MODEL NUMBER: 8531N-EX.
- 2 FOR USE WITH TE Connectivity. MOUNTING STUD:  
MODEL AC-D03636, 1/4-28 TO 1/4-28 (SUPPLIED BY TE CONNECTIVITY AS STANDARD)  
MODEL AC-D03664, 1/4-28 TO M5  
MODEL AC-D03665, 1/4-28 TO M6
- 3 TEMPERATURE SENSOR: Ni1000 (CLASS B).
- 4 REFER TO THE DATASHEET FOR BATTERY LIFE, WHICH IS SUBJECT TO AMBIENT TEMPERATURE AND THE USER'S SELECTION OF TRANSMISSION INTERVALS, SAMPLING RATE,...
- 5 COMPLY WITH NATIONAL ELECTRICAL CODE(NEC) CLASS 1 DIVISION 1 HAZARDOUS LOCATIONS.
- 6 COMPLY WITH ATEX 1G ZONE 0 T4.
- 7 COMPLY WITH FCC, IC, RED, ATEX, IECEx, CSA.
- 8 COMPLY WITH RoHS EU DIRECTIVE 2002/95/EC.
- 9 IF THE DEVICE IS USED IN A MANNER NOT SPECIFIED BY THE MANUFACTURER, THE PROTECTION PROVIDED BY THE DEVICE MAY BE COMPROMISED.
- 10 CAUTION THERE IS A RISK OF EXPLOSION IF THE BATTERY IS REPLACED BY AN INCORRECT BATTERY.
- 11 BATTERY SHOULD ONLY BE REPLACED BY QUALIFIED PERSON.
- 12 TESTED OTA @ -70dBm.
- 13 REED SWITCH FUNCTION TO BE DEFINED BY TE.
- 14 ANTENNA POINTS TO -Y DIRECTION@±15° (TE PROPOSAL).
- 15 MANUFACTURER'S DETAILED INFORMATION FOUND IN USER MANUAL AS ALLOWED DUE TO PRODUCT SIZE CONSTRAINS.
- 16 LABEL MATERIAL: BRADY B-473 THERMAL TRANSFER PRINTABLE GLOSSY WHITE STATIC DISSIPATIVE POLYESTER.



Marking 1  
(Labeling) 15 16

EX Label  
(Please refer to the drawing 20023687-21 for details.)

Marking 2  
(Labeling sample) 16



Serial Number  
Marking 3  
(Lasering sample)

SIZE	DWG. NO.	REV
B	OD-8531N-EX	B
		SHEET 2 OF 2