

# ELB-15-200-PFT ELB-25-200-PFT

15 / 25 kV 200A Portable Feed-Thru

## Product Installation Instructions

### Safety Instructions

**⚠ DANGER** When installing electrical power system accessories, failure to follow applicable personal safety requirements and written installation instructions could result in fire or explosion and serious or fatal injuries.

**⚠ DANGER** As TE Connectivity (TE) has no control over field conditions which influence product installation, it is understood that the user must take this into account and apply his own experience and expertise when installing product.

**⚠ DANGER** Working around energized high-voltage systems may cause serious injury or death. Installation should be performed by personnel familiar with good safety practice in handling high-voltage electrical equipment. De-energize and ground all electrical systems before installing product.

**⚠ DANGER** Power distribution and transmission products must be properly selected for the intended application. It must be installed and serviced by competent personnel who have been trained and understand proper safety procedures. These instructions are written for such personnel and are not a substitute for adequate training and experience in safety procedures.

**⚠ CAUTION** Read and understand the contents of these instructions before installation and follow all locally approved procedures and safety practices before installing or operating this equipment

**⚠ CAUTION** These instructions cannot cover all details or variations in the equipment, procedures, or processes described, nor provide directions for meeting every possible contingency during installation, operation, or maintenance. When additional information is desired to satisfy a problem not covered sufficiently for the user's purpose, please contact your TE sales representative. These instructions are not intended to supersede or replace existing safety and operating procedures.

**⚠ DANGER** Upon receipt of a product, inspect it thoroughly for damage and loss of parts incurred during shipment. If damage or loss is discovered, file a claim with the carrier immediately or contact your TE representative.

**⚠ CAUTION** All associated apparatus must be de-energized during installation and/or maintenance.

**⚠ DANGER** Do not touch or move energized product by hand. Failure to follow this instruction may result in serious or fatal injury, as well as damage to the product.

### Customer Service

For 24 hour customer service, call 800-327-6996.

## Installation Instructions

---

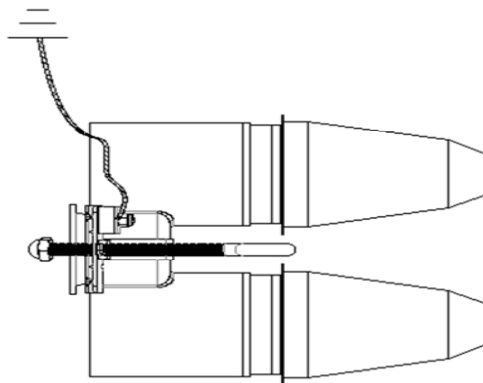
### 1. Kit Contents

1 Portable Feed-Thru body with mounting hardware  
2 Silicone Lubricant  
1 Installation Instructions

---

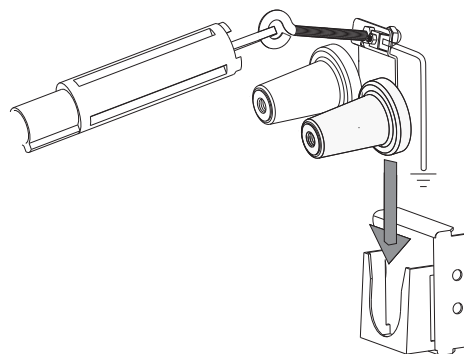
### 2. Install ground

Attach #14 AWG drain wire or equivalent from the system ground to the grounding lug on the Feed-Thru ensuring that there is enough slack to operate with a hotstick.



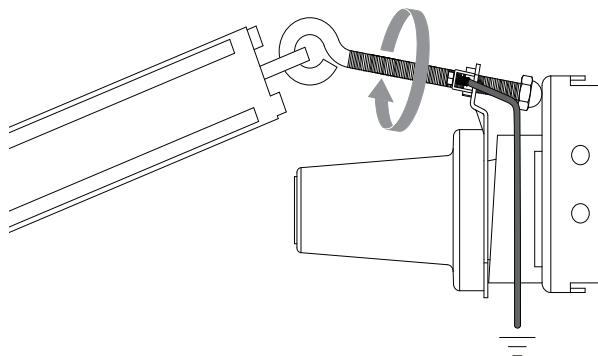
### 3. Install Feed-Thru

Attach hot stick to the Feed-Thru hold down eyebolt. Position the Feed-Thru in the parking stand on the apparatus.



### 4. Fix eyebolt Feed-Thru

Turn the hold down eyebolt clockwise until tight.



---

## 5. Prepare for use

- Remove black shipping caps.
- Clean and lubricate Feed-Thru interfaces with lubricant supplied.
- To use the Feed-Thru as a junction point, please follow the instructions provided by the junction.
- To use Feed-Thru as a grounding point, please follow the instructions provided by the grounding elbow.
- If three-phase loop feed circuits are being connected, both loadbreak elbows forming the loop must be from the same phase.

**⚠ DANGER** Failure to comply could result in death or serious injury.

The Information contained in these installation instructions is for use only by installers trained to make electrical power installations and is intended to describe the correct method of installation for this product. However, TE has no control over the field conditions which influence product installation. It is the user's responsibility to determine the suitability of the installation method in the user's field conditions. TE's only obligations are those in TE's standard Conditions of Sale for this product and in no case will TE be liable for any other incidental, indirect or consequential damages arising from the use or misuse of the products.

TE, TE Connectivity and TE connectivity (logo) are trademarks.  
Copyright 2020 TE Connectivity. All Rights Reserved.

