

Housing Assembly 5 posn. Hybrid Jr./Std. Power Timer Tab & Rec.

1. SCOPE

1.1 Content

This Instruction Sheet is to provide useful information for correct assembly of the harness and correct assembly / disassembly of the connectors.

Tyco P/N	Trade Mark description
1599314-1	Housing Assembly 5 posn. , Hybrid Jr./Std. Power Timer Tab
1599317-1	Housing Assembly 5 posn. , Hybrid Jr./Std. Power Timer Rec.

Table 1
(Tyco Part Numbers)

2. PACKAGING OF THE CONNECTORS

Hsg Ass'y 5 Posn, Hybrid JPT/SPT Rec (PN1599314-1) and Tab (PN1599314-1) is shown on Fig 1. The connectors are supplied with a preassembled Secondary Lock. Connectors have mechanical polarizations to assure the proper mating between male and female housing. The connectors are supplied in a carton box in random order.

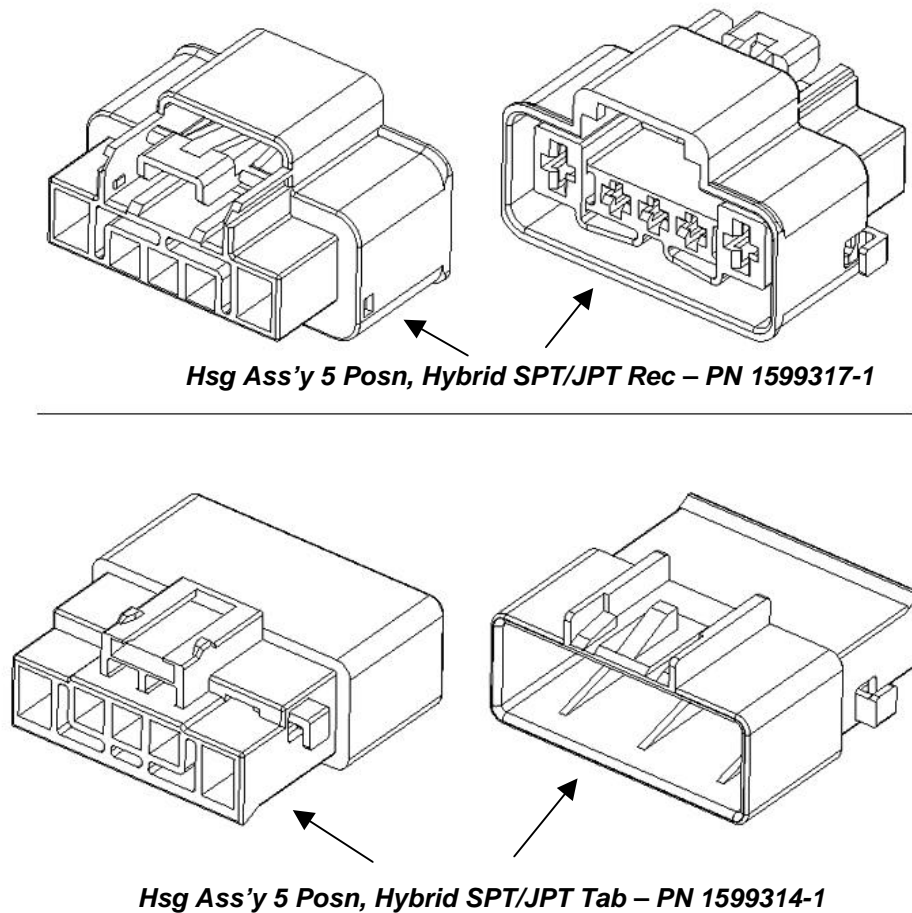


Figure 1

Prepared by : Cláudio Cassali

Approved by : Leandro Prado

3. CONTACTS LOADING

Insert the contacts into the housings cavities according to figure 2 until the lance on the metal contacts body is released. On table 2 below are indicated the different contacts used.

Tyco P/N	Trade Mark description	Wire Range (for contacts only)
964292	Tab Contact 2,8 x 0,8 mm Type "A"	0,2 - 0,5 mm ²
964294		>0,5 - 1,0 mm ²
964296		>1,0 - 2,5 mm ²
969007	Tab Contact 5,8 x 0,8 mm Type "A"	0,2 - 0,5 mm ²
964304		>0,5 - 1,0 mm ²
964306		>1,0 - 2,5 mm ²
964308		> 2,5 - 4,0mm ²
964280	Jr. Power Timer Rec. Contact	0,2 - 0,5 mm ²
964284		>0,5 - 1,0 mm ²
965999		>1,0 - 2,5 mm ²
927839 / 927840	Std. Power Timer Rec. Contact	0,2 - 0,5 mm ²
927827 / 927831		>0,5 - 1,0 mm ²
927833 / 927837		>1,0 - 2,5 mm ²
927824 / 927829		> 2,5 - 4,0mm ²

Table 2
(Contacts used on Hsg Ass'y 5 Posn, Hybrid SPT/JPT Tab & Rec)

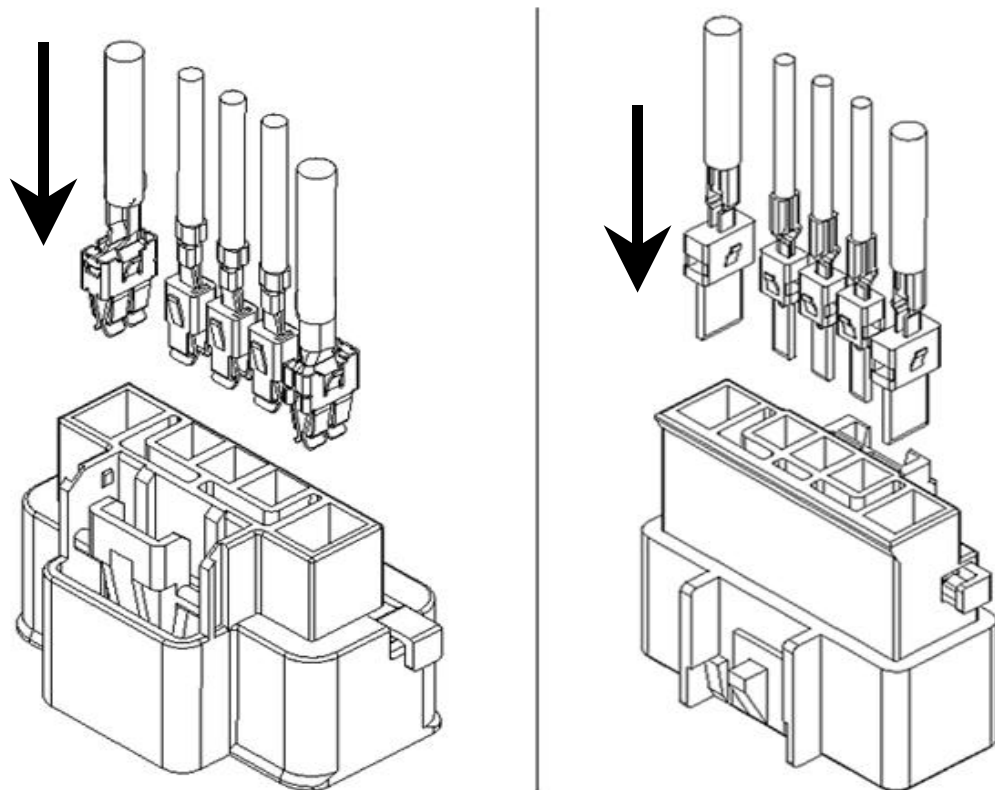


Figure 2

4. SECONDARY LOCK CLOSING DEVICE

After the insertion of the contacts into their cavities, close the Secondary Lock, by pushing in the direction show by the arrows on figure 3 below, into the relevant seats in the male and female housings until the end position.

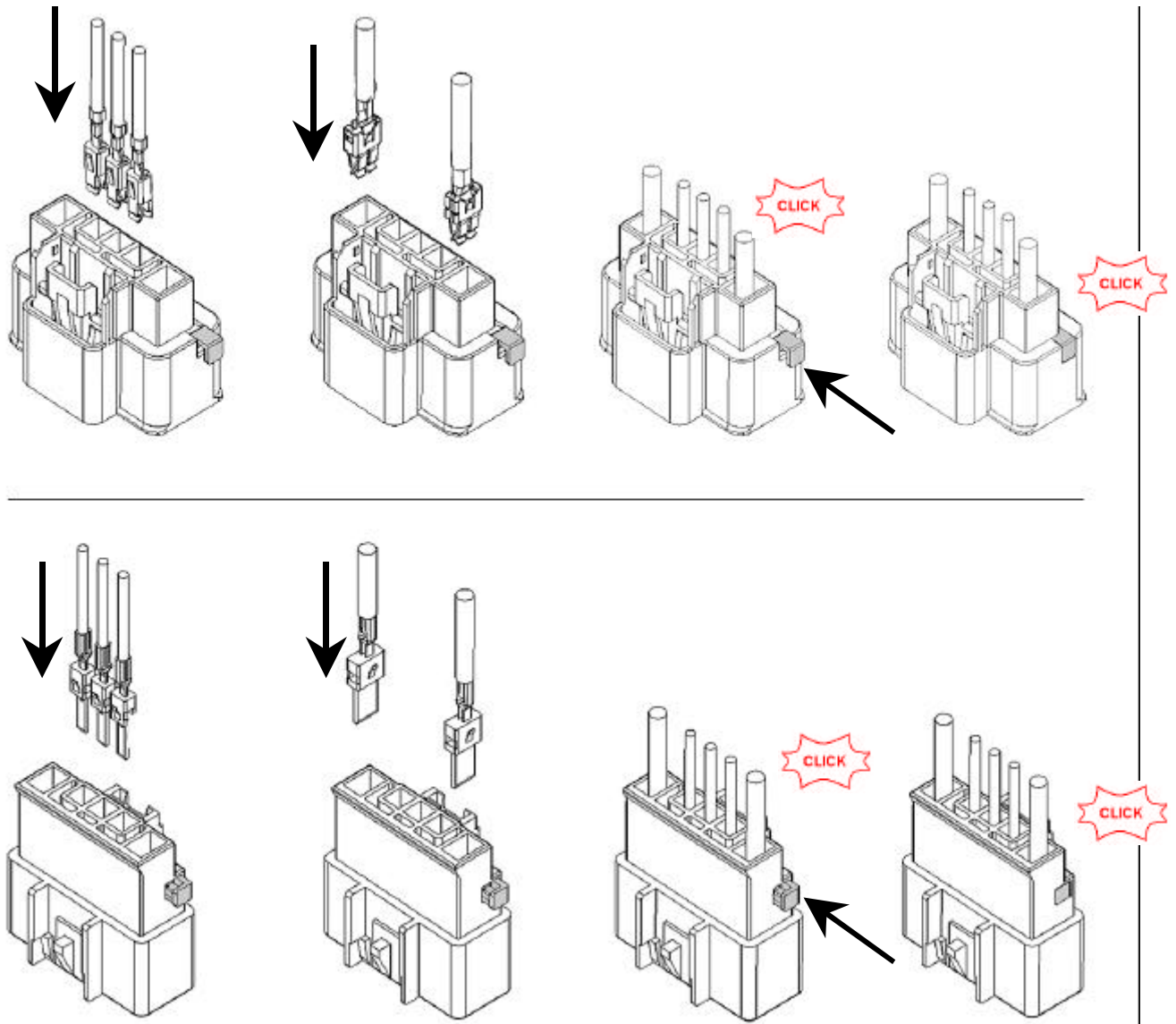


Figure 3

WARNING !

If you notice a resistance do not push any more, but check the correct position of the contacts in their cavities, and only then proceed to close the device.

5. CONTACTS EXTRACTION

To extract a contact the following steps must be followed :

- 5.1 Remove completely the secondary lock in the direction shown by the arrows; see Figure 4 below .

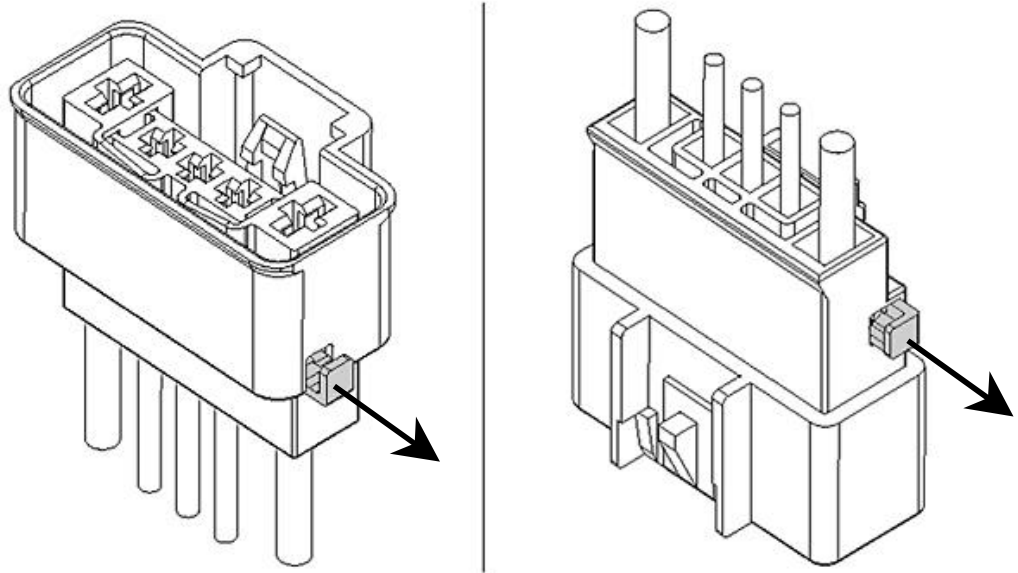


Figure 4

- 5.2 Insert the appropriate tool (PN 968107-1), see figure 5 TO the relevant seats of the cavities, and then pull the contacts in the direction shown by the arrows.

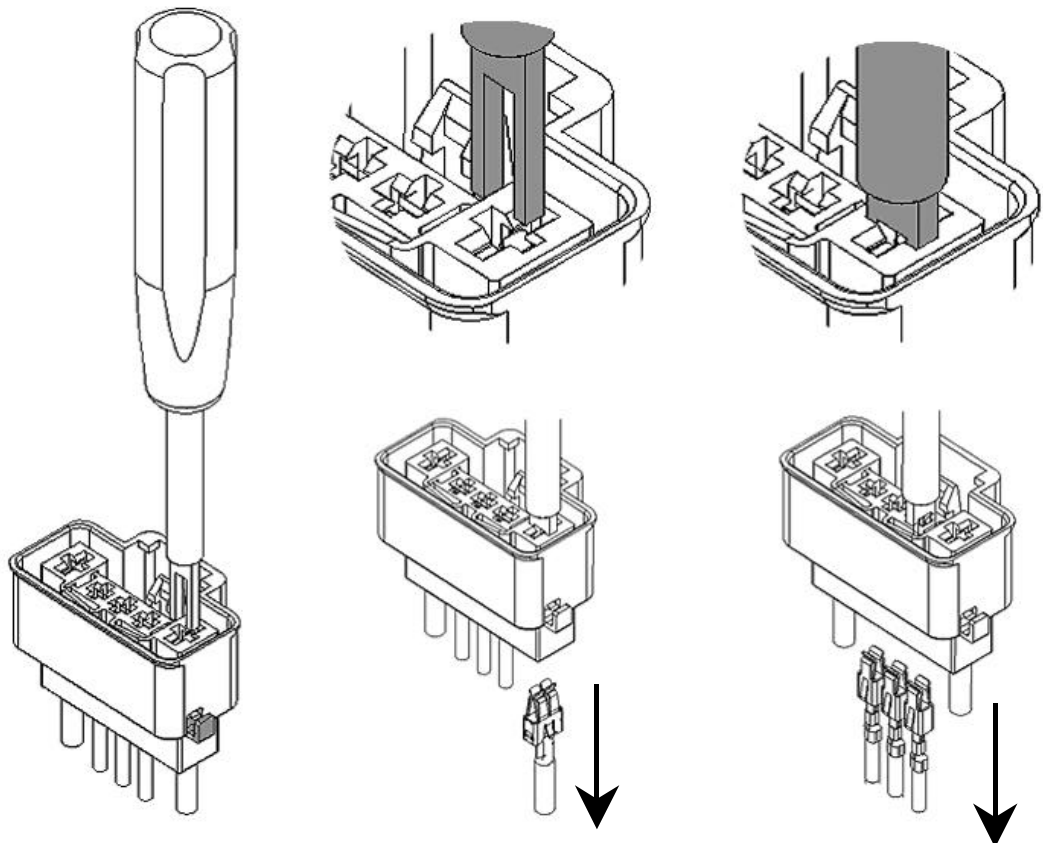


Figure 5

6. CONNECTORS EXTRACTION

To extract a connector the following steps must be followed:

- 6.1 Press the Lock in the direction shown by the arrows and pull the connectors ; see Figure 6 below .

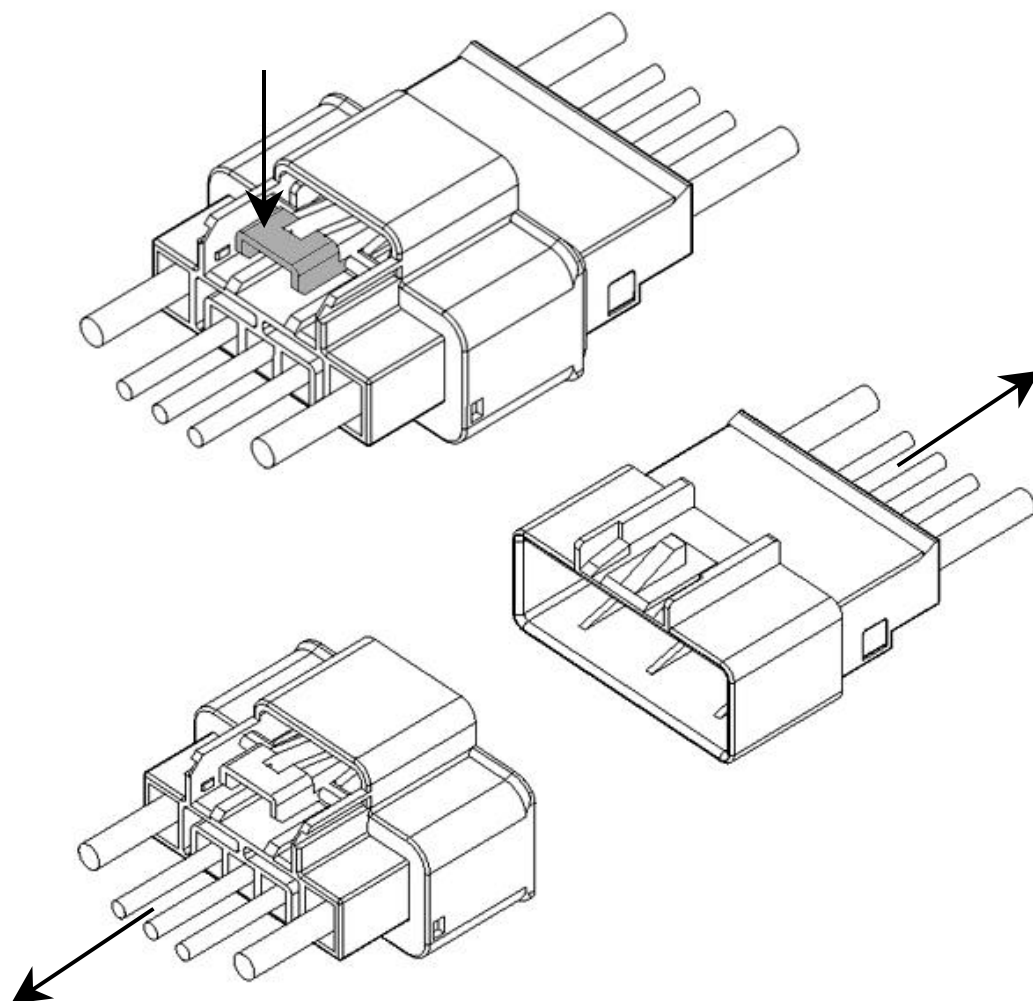


Figure 6