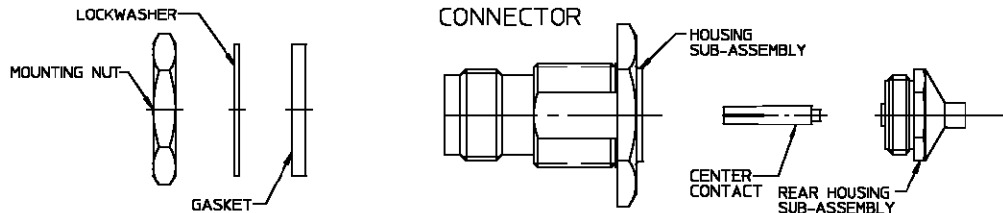
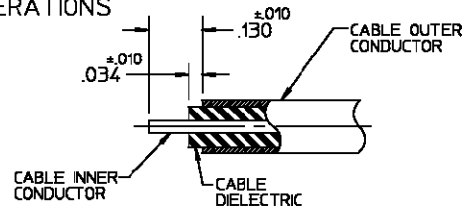


CONNECTOR TYPE	CABLE TYPE	TOOLS REQ'D
'OST' BULKHEAD FEEDTHRU CABLE JACK DIRECT SOLDER ATTACHMENT	.085 SEMI-RIGID COAXIAL CABLE	FIXTURE BASE:2098-5206-54 (T-4567) CLAMP INSERT:2098-5208-54 (T-4700-2) LOCATOR TOOL:2098-5605-02 CENTER CONTACT HOLDER: 2098-5279-10 (T-4580)

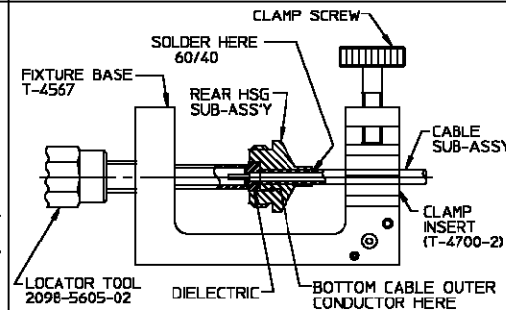


### ASSEMBLY OPERATIONS

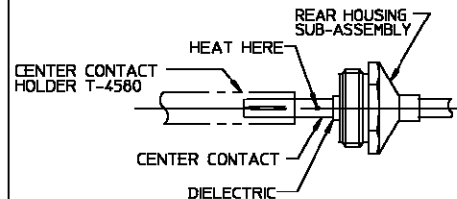
- 1.0 PREPARATION OF CABLE  
1.1 TRIM CABLE TO DIMENSION SHOWN



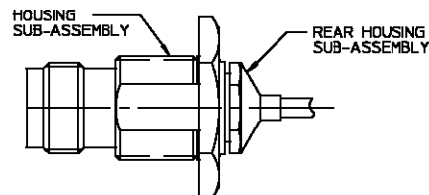
- 2.0 SOLDERING OF CABLE TO REAR HOUSING SUB-ASS'Y.  
2.1 TIN INNER CONDUCTOR.  
2.2 PLACE REAR HOUSING ON END OF CABLE.  
2.3 PLACE LOOSE ASSEMBLY ON FIXTURE BASE AS SHOWN.  
2.3.1 NEST CABLE END IN LOCATOR TOOL.  
2.3.2 TIGHTEN CLAMP SCREW TO SECURE CABLE.  
2.3.3 LOCATOR TOOL TO SEAT CABLE FIRMLY.  
2.4 SOLDER CABLE TO REAR HOUSING SUB-ASS'Y.



- 3.0 SOLDERING OF CENTER CONTACT TO CABLE INNER CONDUCTOR.  
3.1 PLACE CENTER CONTACT IN HOLDER, HEAT CENTER CONTACT AND PUSH IT OVER INNER CONDUCTOR OF CABLE WITH THE LARGE DIAMETER OF CONTACT RESTING FIRMLY AGAINST DIELECTRIC.  
3.2 REMOVE EXCESS SOLDER.



- 4.0 ASSEMBLE HOUSING SUB-ASSEMBLY ONTO REAR HOUSING SUB-ASSEMBLY  
4.1 SECURE HOUSING SUB-ASSEMBLY TO THREADS OF REAR HOUSING SUB-ASS'Y  
4.2 TIGHTEN WITH A TORQUE OF 25-30 IN LBS



- 5.0 INSPECTION OF COMPLETED CONNECTOR ASSEMBLY  
5.1 ADHERENCE TO STEPS GIVEN WILL YIELD TOLERANCES SHOWN.

