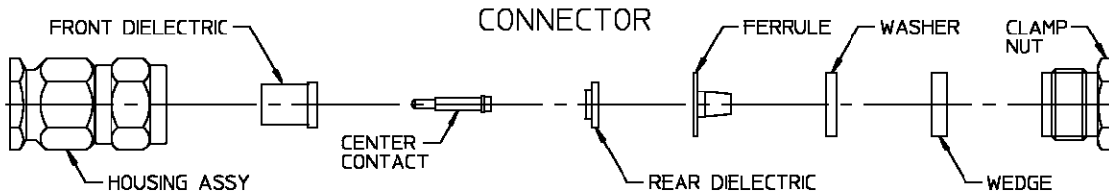


CONNECTOR TYPE OSM BULKHEAD FEEDTHROUGH CABLE PLUG CLAMP ATTACHMENT	CABLE TYPE RG-188/U RD-316/U	TOOLS REQ'D: CENTER CONTACT HOLDER: 2098-5221-10 (T-4578)
---	---	--

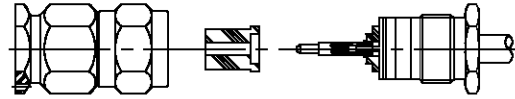


ASSEMBLY OPERATIONS

Step 1 (a) Cut cable outer jacket to dimension shown, 45° angle. (b) Place nut (hex first) and wedge (small opening first over jacket) and washer.	
Step 2 (a) Push back braid to expand and facilitate cutting. Cut braid with small pointed scissors at point of widest expansion.	
Step 3 (a) Cut slits in outer jacket, .062 long 3 places approx. 120 deg. apart, to facilitate installation of ferrule (optional) (a) Flare out remaining braid, and install ferrule (tapered end first) and seat firmly.	
Step 4 (a) Slide washer, wedge and clamp nut toward ferrule, such as to clamp braid between the ferrule and washer. (b) Trim braid as close as possible with a small pair of scissors or flush cut wire cutter.	
Step 5 (a) Cut cable dielectric flush with ferrule. (b) Cut cable inner conductor to dimension shown.	
Step 6 (a) Slide rear dielectric over cable inner conductor.	
Step 7 (a) Place center contact in holder, heat center contact and push it over cable inner conductor and into rear dielectric firmly. (b) Remove excess solder.	

Step 8

- (a) Assemble front dielectric onto center contact.
- (b) Engage threads of clamp assembly to housing and torque to 15-18 in lbs.
- (c) Assembly is now complete.

**Step 9**

- (a) Adherence to steps given will yield tolerances shown.

