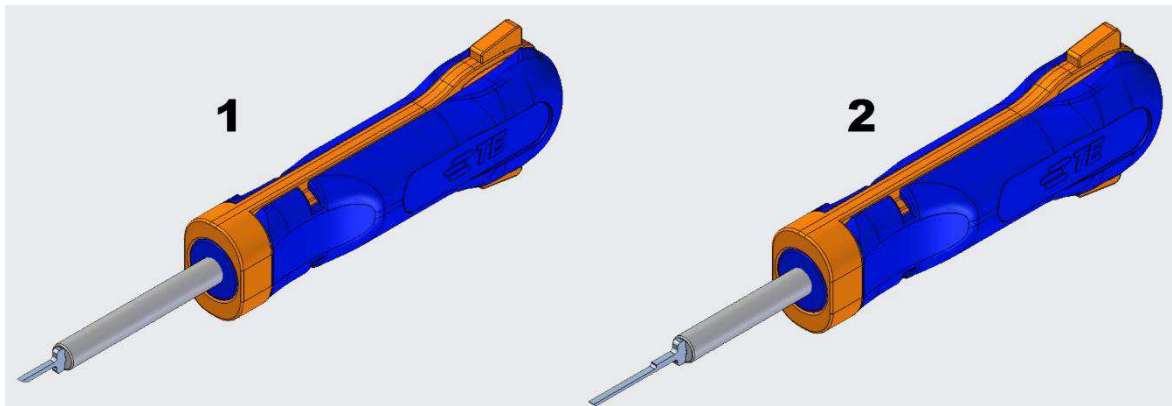


Figure 1: Extraction tools 2385786-1 and 2385815-1



**1** Tool 2385786-1

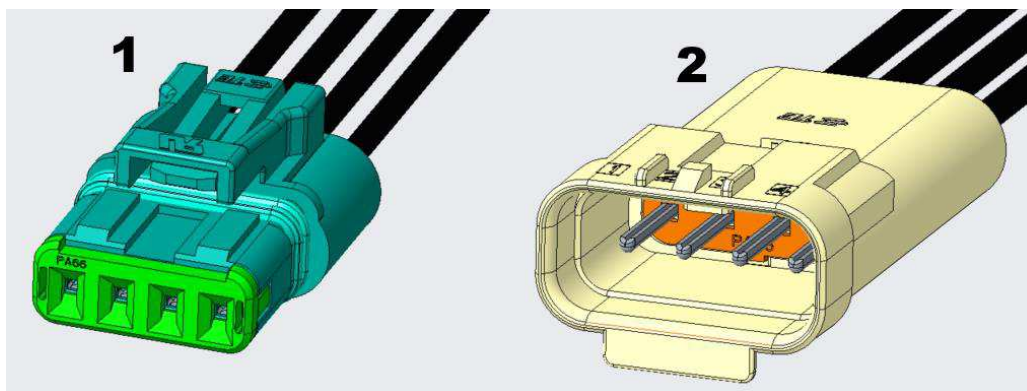
**2** Tool 2385815-1

## 1. INTRODUCTION

Extraction tools 2385786-1 and 2385815-1 (Figure 1) are designed to remove SDL 2.5 waterproof connectors 2321916-2 and 2321923-2 (Figure 2) respectively.

Read these instructions thoroughly before attempting to remove these connectors.

Figure 2: SDL 2.5 waterproof connectors



**1** Connector 2321916-2

**2** Connector 2321923-2

## 2. DESCRIPTION

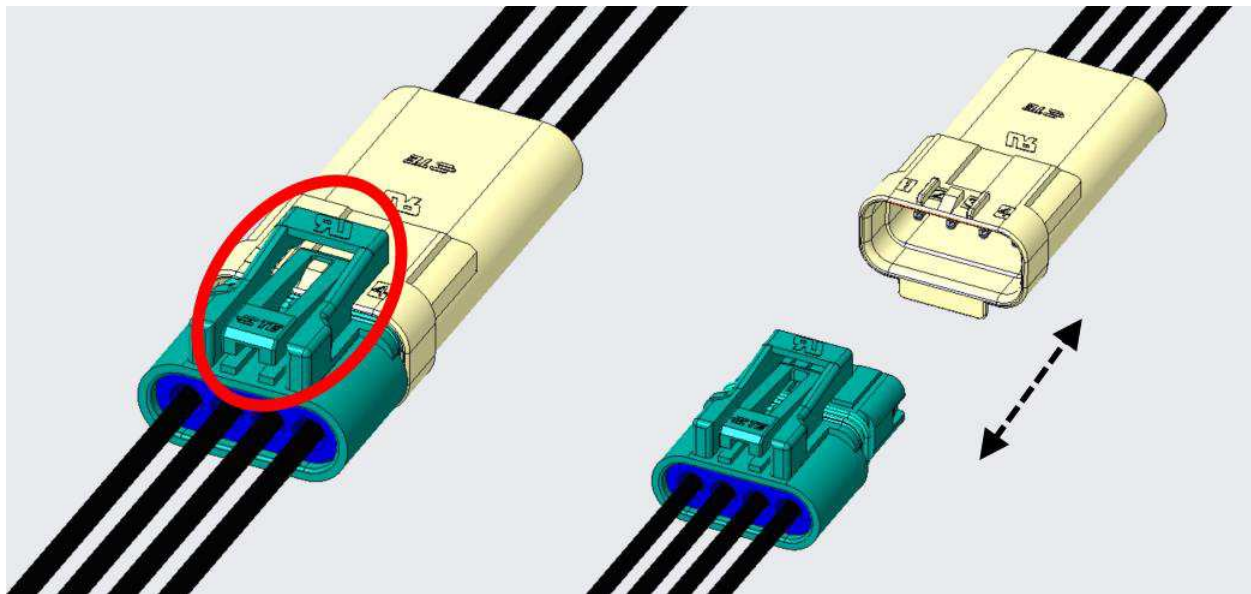
The extraction tool consists of a metal tip inside a plastic handle, with an extendable plastic shroud to protect the tool when not in use. The SDL connectors consist of a plastic outer housing that holds the terminals, a locking tab on top, a wire seal in the back, and an optional TPA cover in front.

## 3. EXTRACTION PROCEDURE

### 3.1. Separating the connectors

To extract the terminals from the housing, you might have to separate the connectors. To do so, press down on the latch shown in Figure 3 and pull the two connectors apart.

*Figure 3: Separating the connectors*

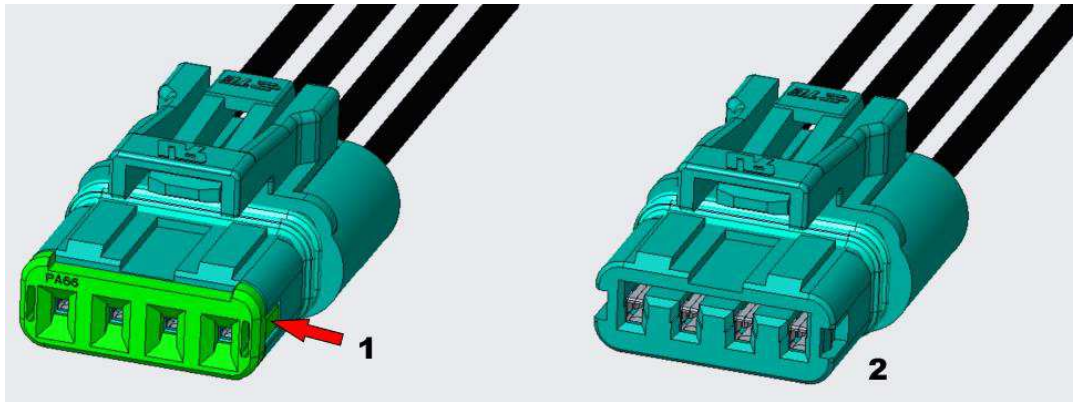


### 3.2. Removing terminal 2321921-1 from housing 2321916-1

To remove 2321921-1 from housing 2321916-1, complete the following steps:

1. The TPA latch is on the left and right side of the housing. Unlatch the TPA cover and pull it out of the housing (Figure 4).

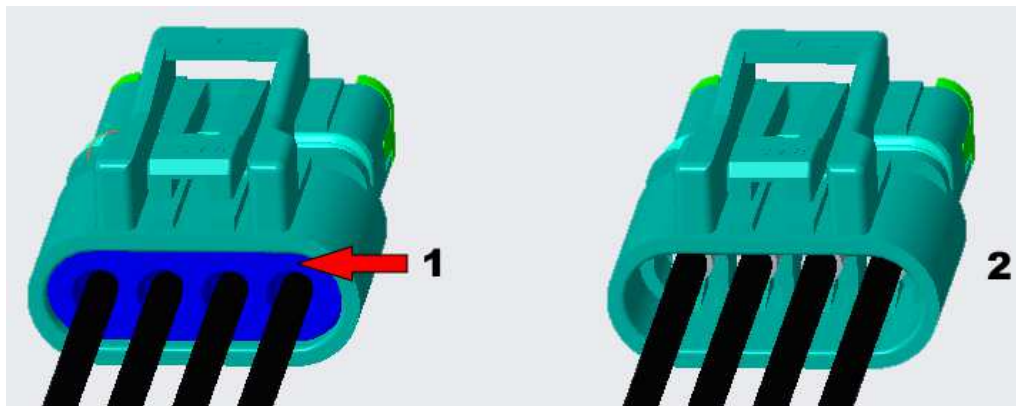
Figure 4: Removing TPA cover from housing 2321916-1



- 1 TPA latch
- 2 Housing with TPA cover removed

2. Remove the wire seal by pulling it out from the back of the housing (Figure 5).

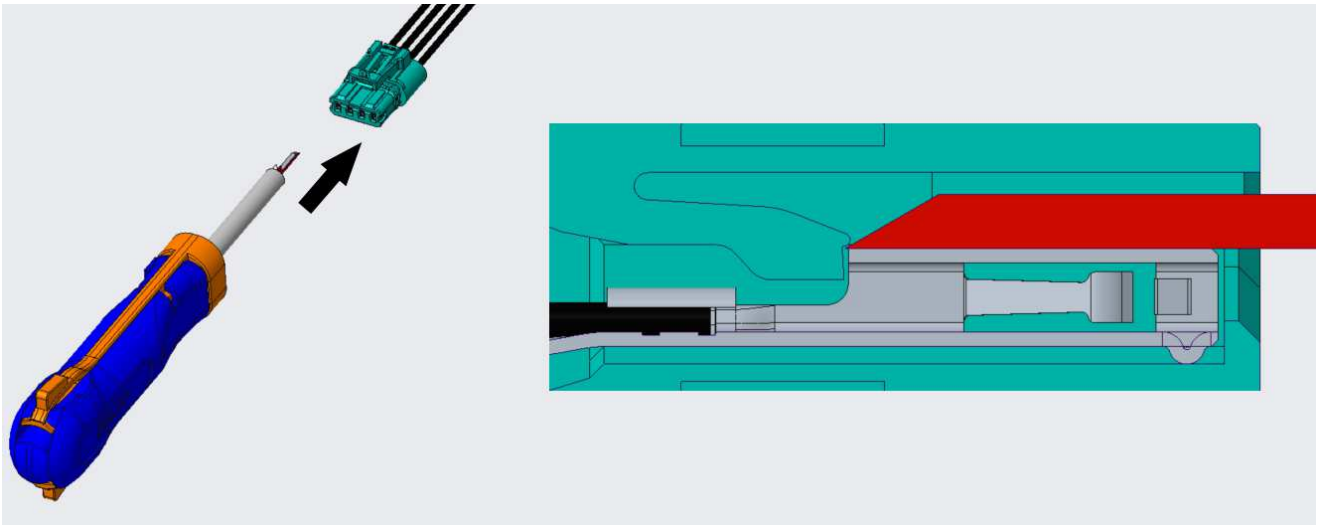
Figure 5: Removing wire seal from housing 2321916-1



- 1 Wire seal
- 2 Housing with wire seal removed

3. Insert tool 2385786-1 into the front of the housing and use the tip of the tool to lift the latch that holds the terminal in place (Figure 6).

*Figure 6: Removing terminal 2365990-1 from housing 2365949-1*



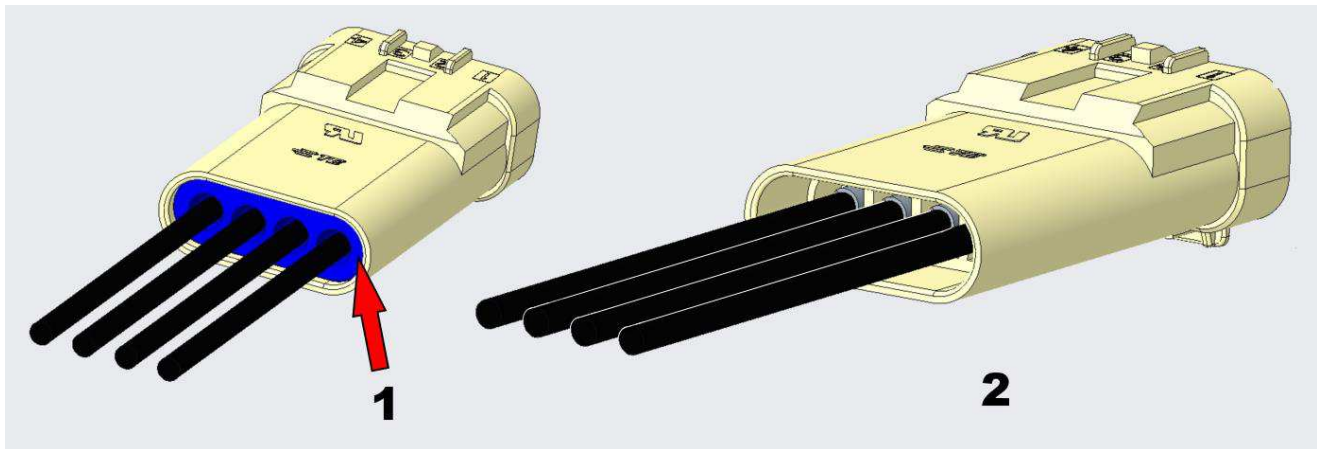
4. While the latch is lifted, pull the wire to remove the terminal from the housing.

### 3.3. Removing terminal 2321928-1 from housing 2321923-1

To remove terminal 2321928-1 from housing 2321923-1, the wire seal must be removed before the TPA can be removed from the connector.

1. Remove the wire seal from the back of the housing (Figure 7).

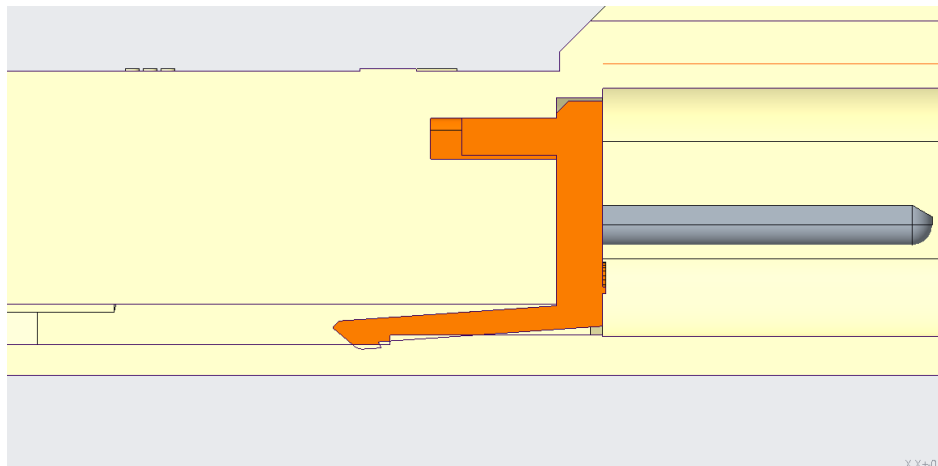
Figure 7: Removing wire seal from housing 2321923-1



- 1 Wire seal
- 2 Housing with wire seal removed

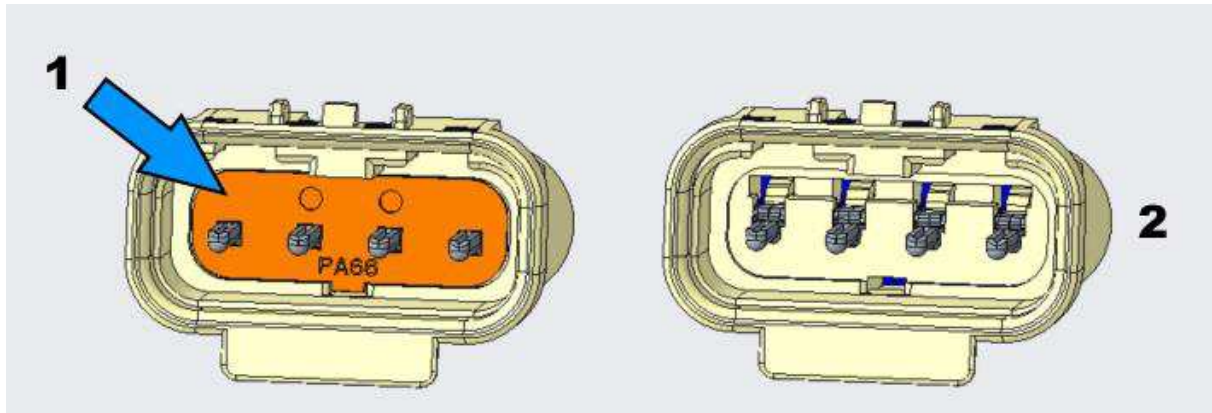
2. The TPA latch is located in a channel near the bottom of the housing. Lift the latch from the front or back of the housing. (Figure 8).

Figure 8: Lifting the TPA latch



3. Remove the TPA cover from the housing (Figure 9).

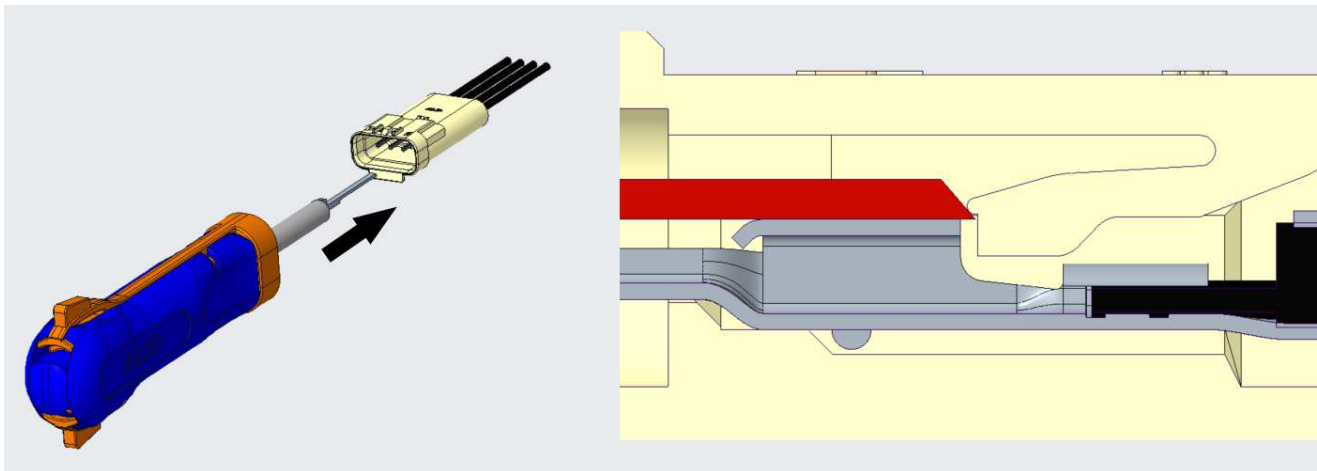
*Figure 9: Removing TPA cover from housing 2321923-1*



- 1** TPA cover
- 2** Housing with TPA cover removed

4. Insert the tool into the front of the housing and use the tool tip to lift the latch located inside the connector (Figure 10).

*Figure 10: Lifting latch in housing 2321923-1*



5. While the latch is lifted, pull the wire to remove the terminal.

#### 4. TOOL MAINTENANCE

Inspect the tool be when you receive it and at regularly scheduled intervals. The tool is not repairable and should be replaced when it is worn or damaged. Store the extraction tool in a clean, dry place and clean it with a soft, lint-free cloth. Additional tools can be ordered through your TE representative. You can also order by any of the following methods:

- Go to [TE.com](https://www.te.com) and click the **Shop TE** link at the top of the page.
- Call 800-522-6752.
- Write to:

CUSTOMER SERVICE (038-035)  
TE CONNECTIVITY CORPORATION  
PO BOX 3608  
HARRISBURG PA 17105-3608

#### REVISION SUMMARY

Revisions to this instruction sheet include:

Initial release