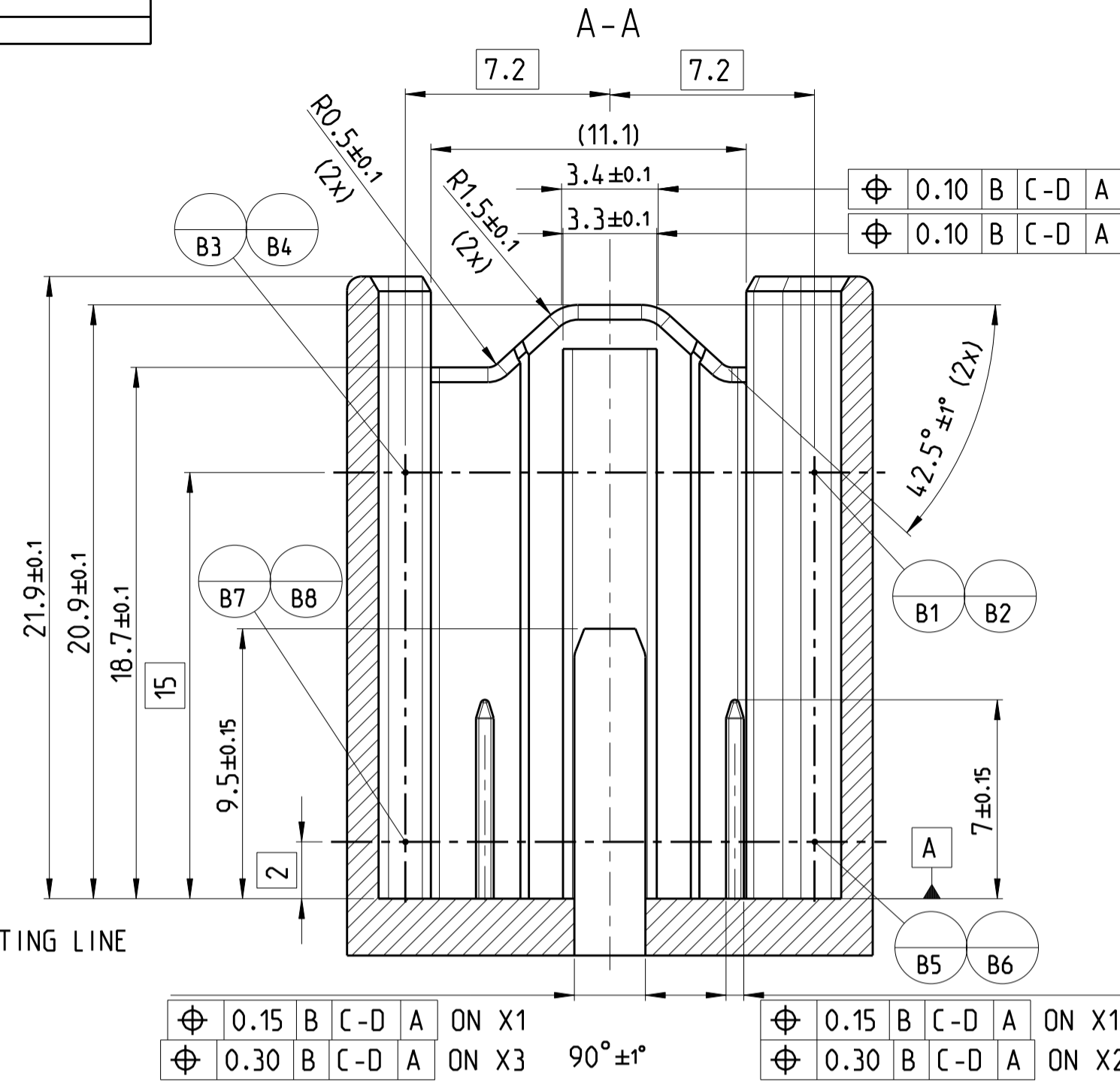
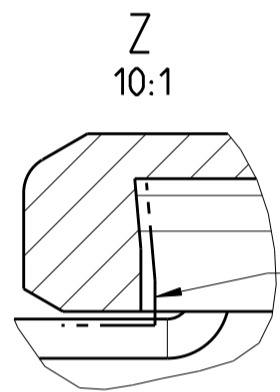
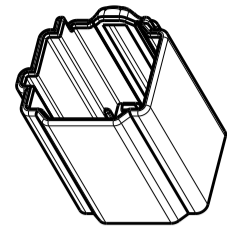
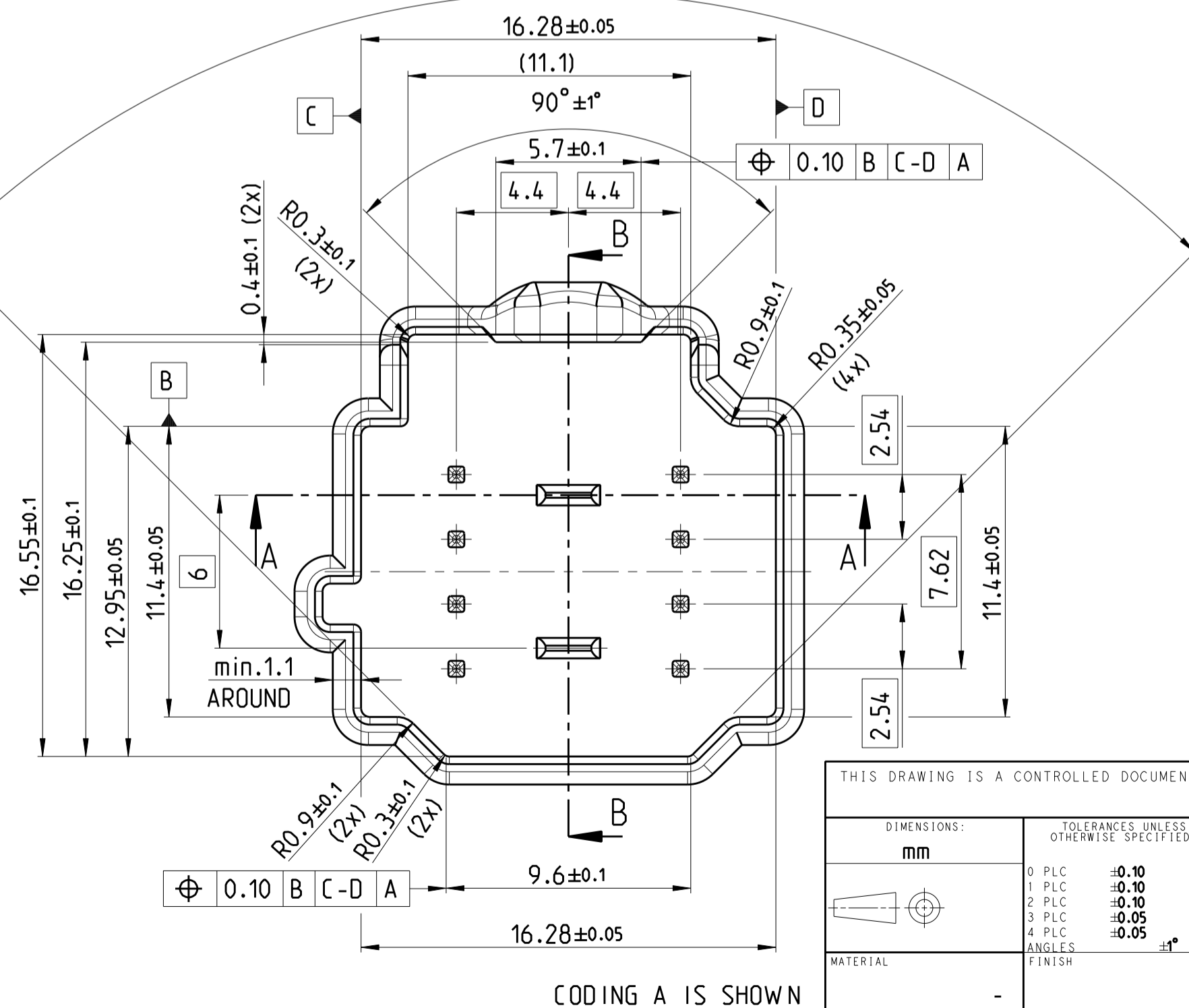
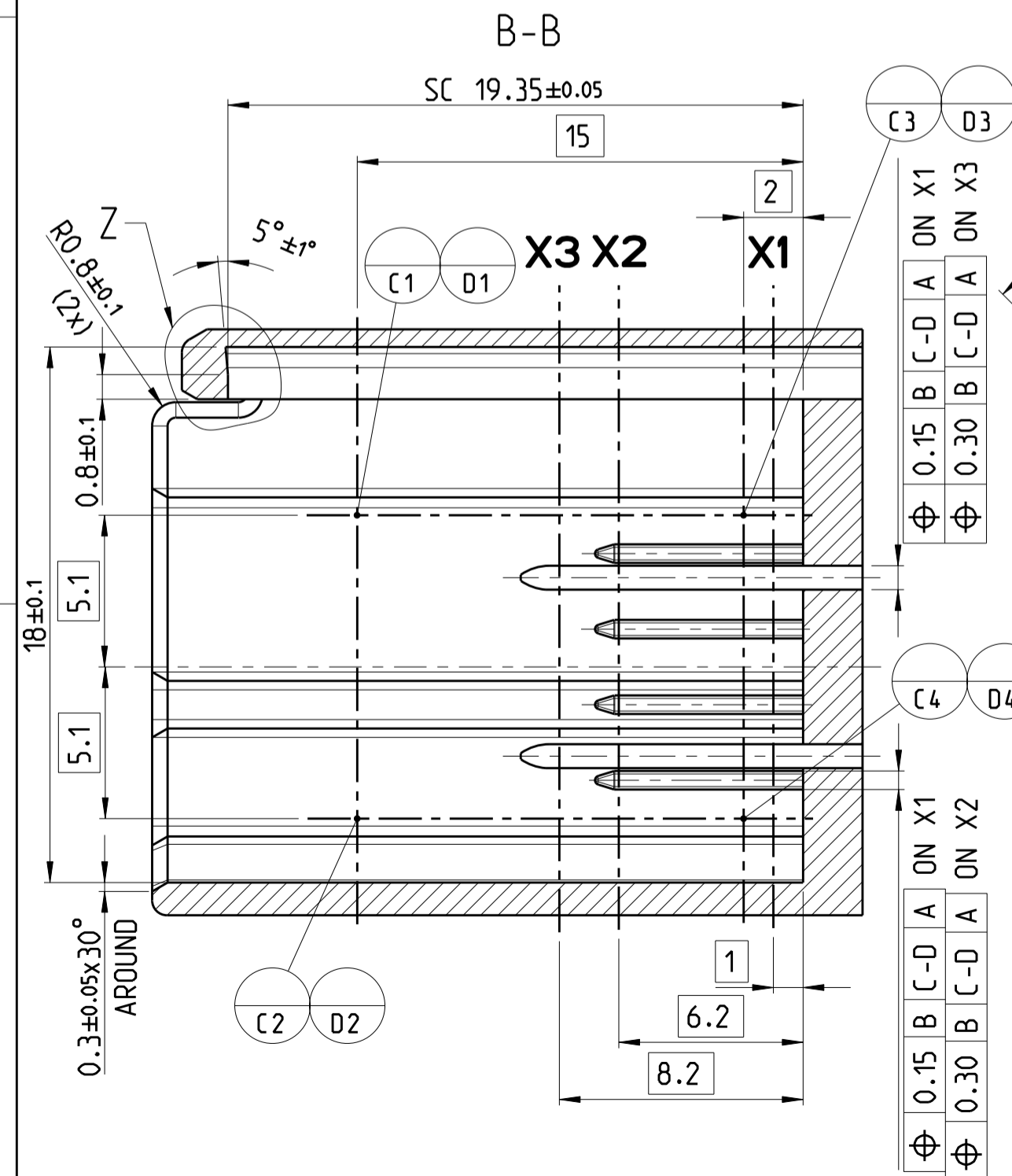


NOTES:

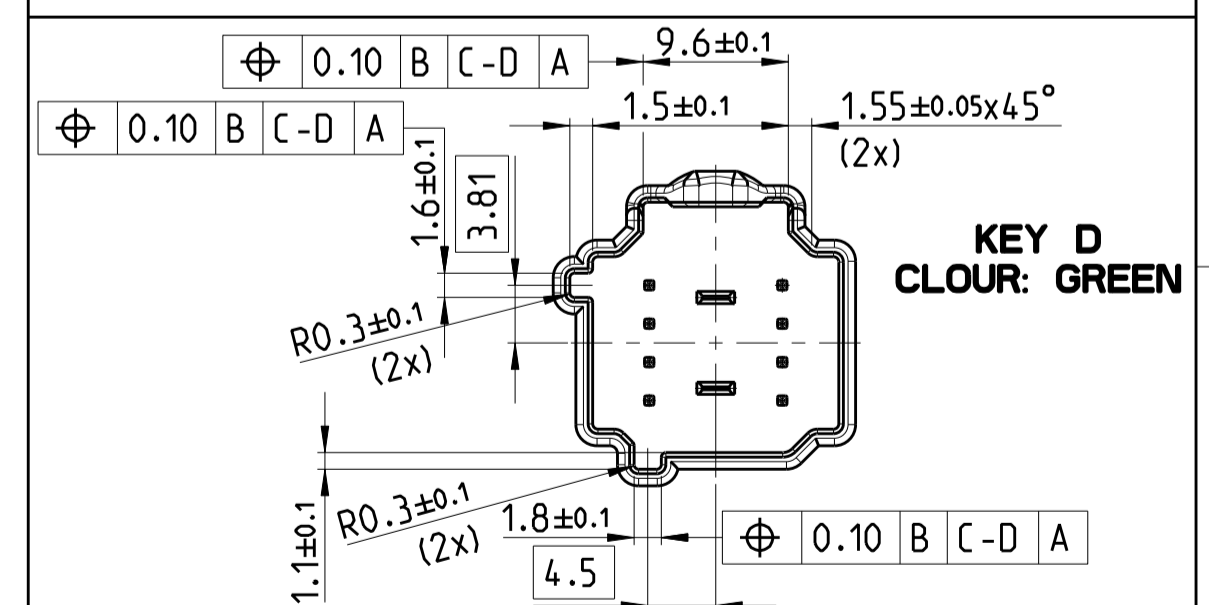
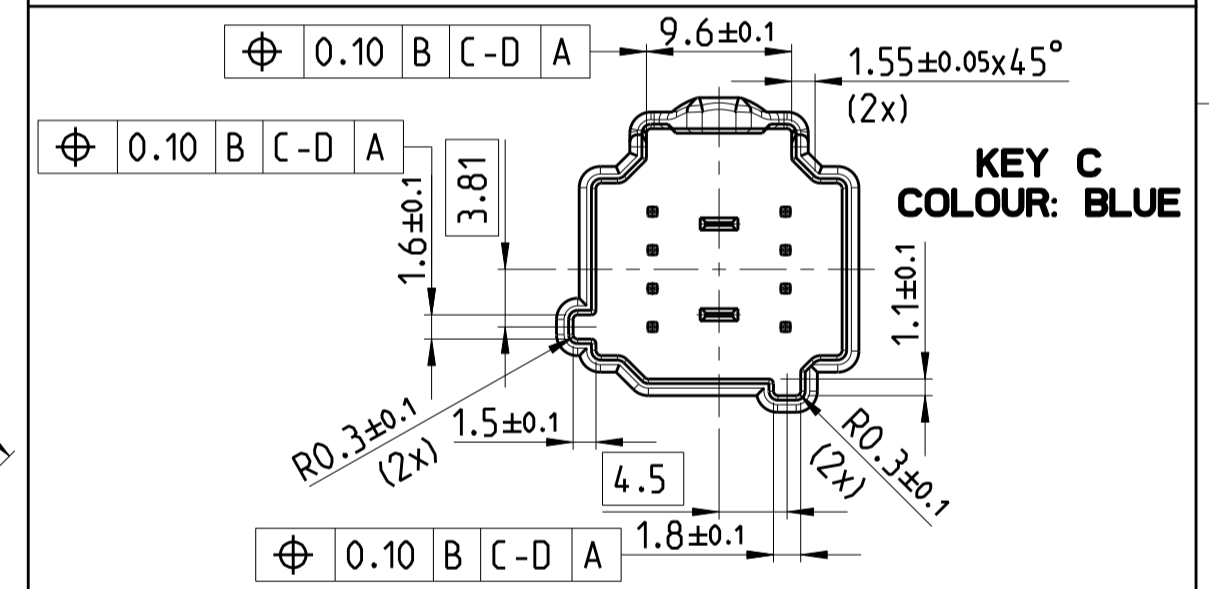
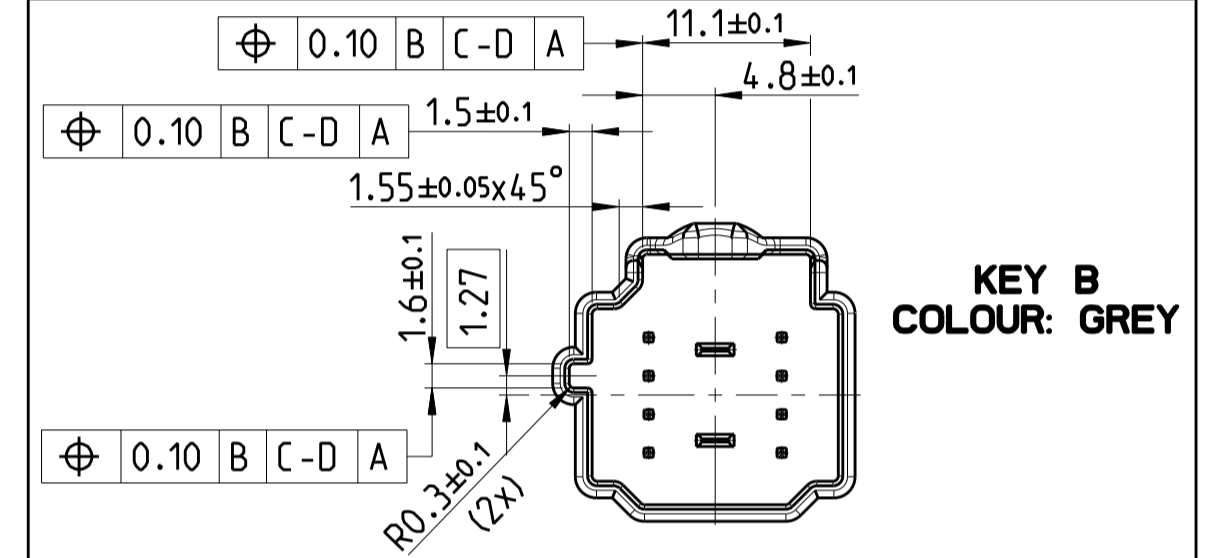
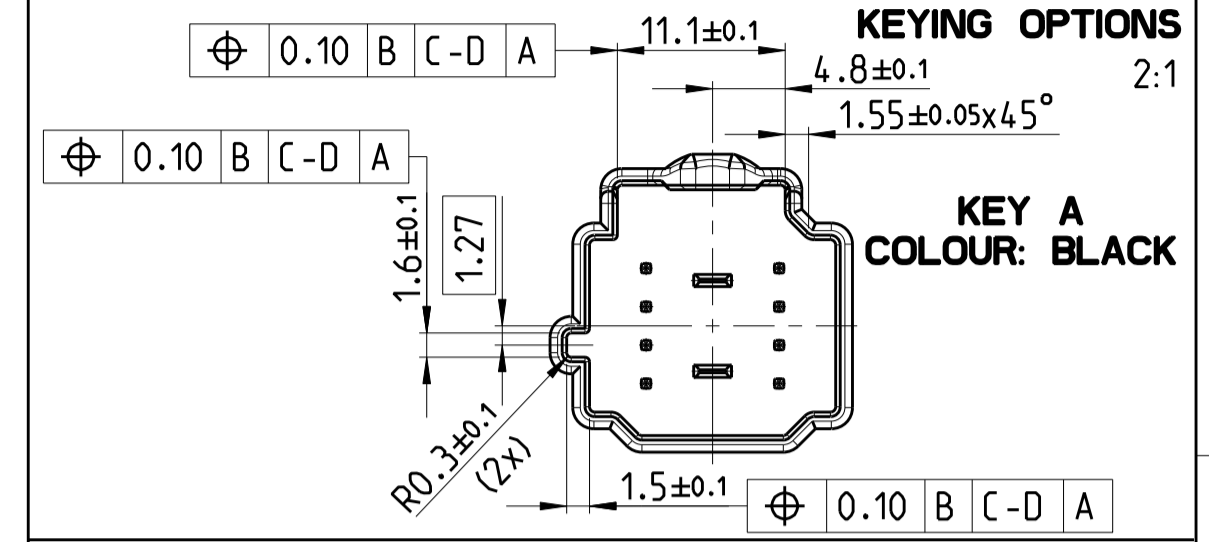
- MATING SIDE PLATING DETAILS
0.64 BLADES: TIN SEE EWCAP_001 REV:F (0.64-T002) TEMP CLASS 2
- PIN TIP DETAILS
0.64 BLADES: TIN SEE EWCAP_001 REV:F (0.64-T002) TEMP CLASS 2
- MATING SIDE PLATING DETAILS
2.80 BLADES: TIN SEE EWCAP_001 REV:F (280-T001) TEMP CLASS 2
- PIN TIP DETAILS
2.80 BLADES: TIN SEE EWCAP_001 REV:F (280-T001) TEMP CLASS 2
- SC = SIGNIFICANT CHARACTERISTIC
- ALL RADII MIN. R0.20 EXCEPT AS NOTED
- X1 / X2 / X3 = MEASUREMENT LEVEL



BEFORE TOOLING ANY DEVICE WITH THIS INTERFACE PLEASE CONTACT TE CONNECTIVITY ENGINEERING DEPARTMENT



LOC	DIST	REVISIONS			
P	LTR	DESCRIPTION	DATE	DWN	APVD
A1	-	A	NEW DRAWING	19APR2012	GP GM



THIS DRAWING IS A CONTROLLED DOCUMENT.

DWN G.PUCKEL 18APR2012
CHK K.ROTH 19APR2012

TE Connectivity

NAME 10POS. HYBRID INTERFACE SPECIFICATION

SIZE A2 CAGE CODE 00779 DRAWING NO. C-114-94188

RESTRICTED TO -

CUSTOMER DRAWING SCALE 5:1 SHEET 1 OF 1 REV A

DIMENSIONS:	TOLERANCES UNLESS OTHERWISE SPECIFIED:
mm	
0 PLC	±0.10
1 PLC	±0.10
2 PLC	±0.10
3 PLC	±0.05
4 PLC	±0.05
ANGLES	±1°
FINISH	