

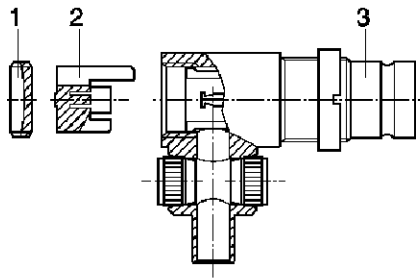
## 1. INTRODUCTION

This specification covers the requirements for application of Tyco Electronics DIN 1.6 / 5.6 mS (75Ω) 90° cable jack and plug connectors. The cable braid and the inner conductor are connected the plug or jack with an IDC-connection.

The component drawings in the specification may differ from the parts supplied.

## 2. DRAWINGS

PART NUMBER	CABLE	TOOLS
0-1393757-8	2YCY 0.4/2.5	1-1393524-1
0-1393757-9	02Y (St)CY 0.45/2.0	1-1393524-1
1-1393757-0	02Y (St)CY 0.45/2.0	1-1393524-1
1-1393757-4	R1-T2.0 LI 75k	1-1393524-1
1-1393757-5	R1-T2.0 LI 75k	1-1393524-1
1-1393757-6	02Y (St)CY 0.45/2.0	1-1393524-1
1-1393757-7	02Y (St)CY 0.45/2.0	1-1393524-1

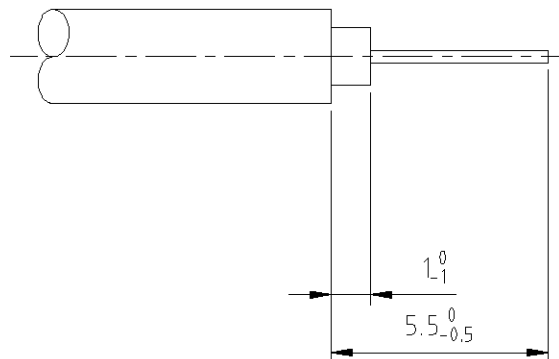


- 1 Threaded cap
- 2 Insulator
- 3 Body

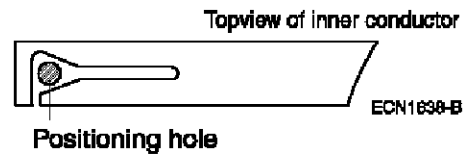
## 3. INSTRUCTIONS

### 3.1 Prepare cable.

- Therefore, place the cable into the cut device of tool 1-1393524-1 and press till full release of ratchet.
- Nibble with tool within achieved ratching position while turning the cable 360° min.



3.2 Insert cable into the body up to stop: the cable inner conductor must be located through the positioning hole of the IDC inner conductor



3.3 Press in insulator (2)

3.4 Screw in threaded cap (1)

3.5 To check inner conductor contacting: cable may not move when pulling lightly on it

3.6 Press in outer conductor IDC contact elements in direction 4 – 5 by using tool 1-1393524-1

