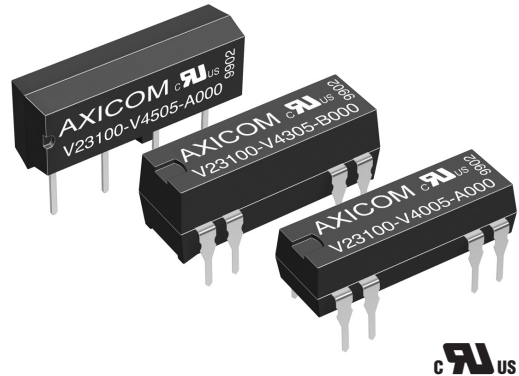


Reed Relay V23100 -V4

- Direct coil control with TTL-signals possible
- Highly reliable switching
- High switching rates
- Ultrasonic cleanable
- High vibration and shock resistance

Typical applications

In-circuit tester, measuring and control systems, telecom equipment, alarm and security equipment.



Approvals

UL File No. 111441

Technical data of approved types on request.

Contact Data	form A	form C
Contact arrangement	1 form A (1 NO), 2 form A (2 NO)	1 form C (CO)
Max. switching voltage		
at rated coil voltage 5VDC	200VDC/VAC _{peak}	175VDC
at rated coil voltage 12to 24VDC	200VDC/VAC _{peak}	175VDC _{peak}
Limiting continuous current	1A	1.2A
Switching power	10W, 10VA	3W, 3VA
Contact material	Ruthenium	
Contact style	reed contact	
Initial contact resistance	<150mΩ	
Operate / release time max.	0.75/0.15ms	1.1/1.6ms
Electrical endurance		
at 12V/10mA	50x10 ⁶ operations	
at 24V/400mA	5x10 ⁶ operations	

Coil Data

Magnetic system	neutral
Coil voltage range	5 to 24VDC
Max. coil temperature	105°C
Thermal resistance	< 75K/W

Coil versions, monostable

Coil code	Rated voltage VDC	Operate voltage VDC _{min.}	Release voltage VDC _{min.}	Coil resistance Ω±10%	Rated coil power mW
1 form A (1 NO) contact					
05	5VDC	3.5	0.75	500	50
12	12VDC	8.4	1.80	1000	144
15	15VDC	10.5	2.25	2000	112
24	24VDC	16.8	3.60	2000	288
2 form A (2 NO) or 1 form C (1 CO) contact					
05	5VDC	3.5	0.75	200	125
12	12VDC	8.4	1.80	500	288
15	15VDC	10.5	2.25	2000	112
24	24VDC	16.8	3.60	2000	288

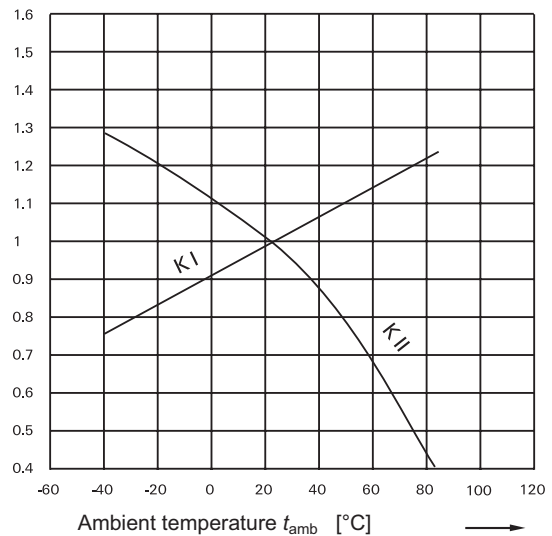
All figures are given for coil without pre-energization, at ambient temperature +23°C.

Coil Data (continued)

Coil versions, limiting operate voltage

Coil code	DIP flat, SIL, 1 form A	DIP flat, 1 form A with diode	DIP high, 1 form C	DIP high, 2 form A std, diode	DIP high, 1 form C diode+ shield	Mini SIL, 1 form A
	VDC	VDC	VDC	VDC	VDC	VDC
05	22.0	14.0	13.0	14.0	14.5	13.6
12	33.0	25.0	22.0	25.0	23.5	21.6
15	44.0	47.0	44.0	47.0	14.5	-
24	44.0	47.0	44.0	47.0	49.0	-

All figures are given for coil without pre-energization, at ambient temperature +23°C.



Coil operative range

Coil operative range graphs

U_I Minimum voltage at 23°C after pre-energizing with rated voltage without contact current

U_{II} Maximum continuous voltage at 23°C

The operating voltage limits U_I and U_{II} depend on the temperature according to the formula:

U_{I t_{amb}} K_I × U_I 23°C and

U_{II t_{amb}} K_{II} × U_{II} 23°C

t_{amb} Ambient temperature

U_{I t_{amb}} Minimum voltage at ambient temperature, t_{amb}

U_{II t_{amb}} Maximum voltage at ambient temperature, t_{amb}

K_I, K_{II} Factors (dependent on temperature), see diagram

Reed Relay V23100 -V4 (Continued)

Insulation Data

Initial dielectric strength	
between open contacts	
DIP and SIL, 1 form A (NO), 2 form A (2 NO)	250VDC
DIP, 1 form C (CO)	200VDC
Mini SIL, 1 form A (NO)	225VDC
between contact and coil	1500VDC
Initial insulation resistance at 500 VDC	>10 ⁹ Ω
Capacitance	
between open contacts	max. 1pF
between contact and coil	max. 2pF
between adjacent contacts	max. 1pF

Other Data

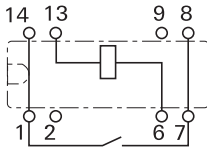
	form A	form C
Material compliance: EU RoHS/ELV, China RoHS, REACH, Halogen content refer to the Product Compliance Support Center at www.te.com/customer-support/rohssupportcenter		
Ambient temperature	-40 to +85°C	
Category of environmental protection	IEC 61810	
Vibration resistance (functional)	30g, 10 to 2000Hz	30g, 50 to 2000Hz
Shock resistance (functional), IEC 60068-2-27 (half sine), DIP and SIL 150g	50g	-
	Mini SIL	50g
Terminal type	PCB-THT	
Resistance to soldering heat THT	IEC 60068-2-20	
	260°C / 10s	

Terminal assignment

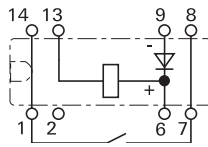
TOP view on component side of PCB

DIP, flat version

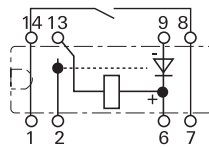
1 form A (NO)
standard
V23100-V4xxx-A000



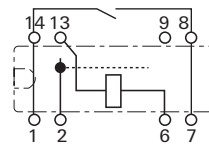
1 form A (NO)
with diode
V23100-V4xxx-A010



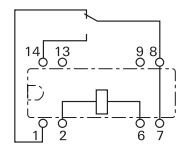
1 form A (NO)
with electrostatic shield + diode
V23100-V4xxx-A011



1 form A (NO)
with electrostatic shield
V23100-V4xxx-A001

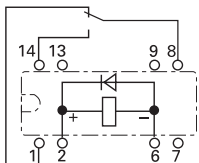


1 form C (CO)
standard
V23100-V4xxx-C000

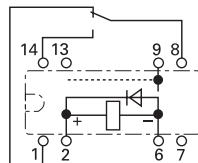


DIP, high version

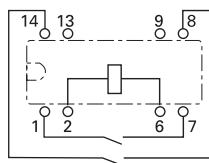
1 form C (CO)
with diode
V23100-V4xxx-C010



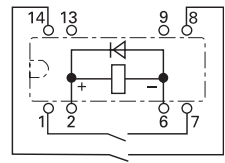
1 form C (CO)
with electrostatic shield + diode
V23100-V4xxx-C011



2 form A (NO)
standard
V23100-V43xx-B000

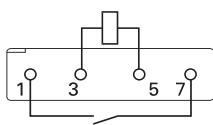


2 form A (NO)
with diode
V23100-V43xx-B010

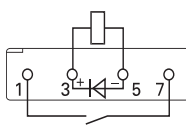


SIL version

1 form A (NO)
standard
V23100-V45xx-A000

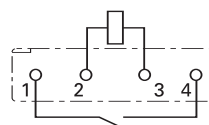


1 form A (NO)
with diode
V23100-V45xx-A010

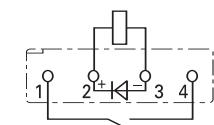


Mini SIL version

1 form A (NO)
standard
V23100-V46xx-A000



1 form A (NO)
with diode
V23100-V46xx-A010



Reed Relay V23100 -V4 (Continued)

Product Code	Version	Coil	Arrangement	Diode/shield	Part number		
V23100-V4005-A000	DIP flat	5VDC	1 form A (NO)	Standard	1393763-1		
V23100-V4012-A000		12VDC			1393763-6		
V23100-V4015-A000		15VDC			1-1393763-0		
V23100-V4024-A000		24VDC			1-1393763-4		
V23100-V4005-A010		5VDC		1 form C (CO)	Diode	1393763-4	
V23100-V4012-A010		12VDC				1393763-8	
V23100-V4015-A010		15VDC			1-1393763-2		
V23100-V4024-A010		24VDC			1-1393763-6		
V23100-V4305-C000		5VDC			Standard	2-1393763-0	
V23100-V4312-C000		12VDC				2-1393763-8	
V23100-V4315-C000	15VDC	3-1393763-4					
V23100-V4324-C000	24VDC	4-1393763-0					
V23100-V4005-A011	5VDC	1 form A (NO)	Diode and shield	1393763-3			
V23100-V4012-A011	12VDC			1393763-9			
V23100-V4015-A011	15VDC	2 form A (NO)	Standard	1-1393763-3			
V23100-V4024-A011	24VDC			1-1393763-7			
V23100-V4305-B000	5VDC			Diode	1-1393763-8		
V23100-V4312-B000	12VDC				2-1393763-6		
V23100-V4315-B000	15VDC				3-1393763-2		
V23100-V4324-B000	24VDC				3-1393763-8		
V23100-V4305-B010	5VDC			1 form C (CO)	Diode	1-1393763-9	
V23100-V4312-B010	12VDC					2-1393763-7	
V23100-V4315-B010	15VDC				3-1393763-3		
V23100-V4324-B010	24VDC				3-1393763-9		
V23100-V4305-C010	5VDC	Standard	2-1393763-2				
V23100-V4312-C010	12VDC		3-1393763-0				
V23100-V4315-C010	15VDC		3-1393763-6				
V23100-V4324-C010	24VDC		4-1393763-2				
V23100-V4305-C011	5VDC	Diode and shield	2-1393763-3				
V23100-V4312-C011	12VDC		3-1393763-1				
V23100-V4315-C011	15VDC		3-1393763-7				
V23100-V4324-C011	24VDC		4-1393763-3				
V23100-V4505-A000	SIL	5VDC	1 form A (NO)	Standard	4-1393763-4		
V23100-V4512-A000		12VDC			4-1393763-7		
V23100-V4515-A000		15VDC			4-1393763-9		
V23100-V4524-A000		24VDC			5-1393763-1		
V23100-V4505-A010		5VDC		Diode	4-1393763-5		
V23100-V4512-A010		12VDC			4-1393763-8		
V23100-V4515-A010		15VDC			5-1393763-0		
V23100-V4524-A010		24VDC			5-1393763-2		
V23100-V4605-A000		Mini SIL			5VDC	Standard	1422026-2
V23100-V4612-A000					12VDC		1422026-3
V23100-V4605-A010	5VDC		Diode	1422026-5			
V23100-V4612-A010	12VDC			1422026-6			