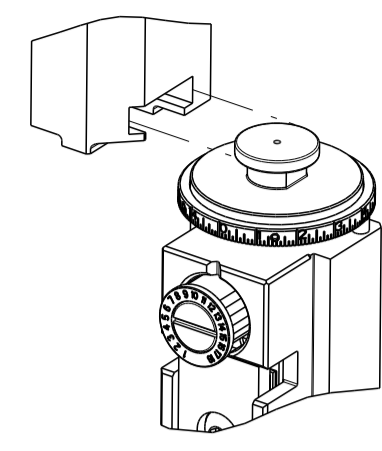


PART NUMBER	REVISION	DESCRIPTION	FEED TYPE
2837320-2	C	FINE CRIMP HEIGHT ADJUST	PNEUMATIC
7-2837320-2	C	PNEUMATIC AND CRIMP TOOLING KIT	PNEUMATIC
7-2837320-7	C	CRIMP TOOLING KIT	-

ATLANTIC VERSION TERMINATOR INTERFACE ADAPTER



APPLICATOR DATA		
CRIMP	SIZE	TYPE
WIRE	3.00 mm [.118]	F
INSUL	6.05 mm [.238]	O

APPLICATOR INSTRUCTIONS  
408-35042

TERMINAL DATA: DELPHI TERMINAL DELPHI CRIMP SPECIFICATION			
TERMINAL NAME: TAXI TERM, F M/P 6.30 SEALED			
WIRE STRIP LENGTH	TERMINAL INSULATION DIAMETER RANGE		
5.23-5.99 mm [.206-.236 IN]	Ø2.45-3.95 mm [.096-.156 IN]		
TERMINAL APPLICATION SPECIFICATION	(A)12052455 - pgs 3 & 6 Rev 7/29/14		
TERMINALS APPLIED			
TE TERMINAL	DELPHI TERMINAL	TE SEAL	DELPHI SEAL
(A) 3311158-1	(A) 12052455	(A) 1949378-4	(A) 15324994
	(A) 3311166-1	(A) 15324995	

TERMINAL DATA: DELPHI TERMINAL TE CRIMP SPECIFICATION			
TERMINAL NAME: TAXI TERM, F M/P 6.30 SEALED			
WIRE STRIP LENGTH	TERMINAL INSULATION DIAMETER RANGE		
5.23-5.99 mm [.206-.236 IN]	Ø2.45-3.95 mm [.096-.156 IN]		
TERMINAL APPLICATION SPECIFICATION	(A)12052455 - pgs 3 & 6 Rev 7/29/14		
TERMINALS APPLIED			
TE TERMINAL	DELPHI TERMINAL	TE SEAL	DELPHI SEAL
(B) 3311158-1	(B) 12052455	(B) 1949378-4	(B) 15324994
		(B) 3311166-1	(B) 15324995

WIRE SIZE	CRIMP HEIGHT mm [INCH]	CRIMP HEIGHT REFERENCE SETTING
14 AWG OR 2.00mm2	1.75+/-0.05 [.069+/- .002]	7.6
1.00mm2	1.60+/-0.05 [.063+/- .002]	8.5

WIRE SIZE	CRIMP HEIGHT mm [INCH]	CRIMP HEIGHT REFERENCE SETTING
16 AWG OR 1.50mm2	1.67+/-0.05 [.066+/- .002]	8.2

- 1 RECOMMENDED SPARE PARTS
- 2 REFER TO SUPPLIED INSTRUCTION SHEET FOR CLEANING, LUBRICATION AND STORAGE OF APPLICATOR.
- 3 APPLY PART NUMBER 2-23419-6 LOCTITE TO THREADS OF ITEM 242.
- 4 CRIMP HEIGHT REFERENCE SETTING WAS THE SETTING USED WHEN THE APPLICATOR WAS QUALIFIED AT THE FACTORY. ADJUSTMENT MAY BE NECESSARY WHEN RUNNING APPLICATOR IN THE FIELD.
- 5 TERMINAL PITCH NOT COMPATIBLE WITH MECHANICAL FEED.
- 6 TERMINAL LUBRICANT IS RECOMMENDED.
- 7. UNLESS SPECIFIED OTHERWISE TORQUE VALUES SHALL BE USED PER DOCUMENT 101-35000.
- 8 APPLY TORO-SEAL IN ALLEN SOCKET TO FILL HOLE AFTER FLAT HD HAS BEEN ADJUSTED TO CORRECT HEIGHT AT QUALIFICATION. APPLY #1-23419-5 LOC-TITE TO THREADS.

**\*WARNING**  
ON INSTALLATION, SET WIRE DISC TO CRIMP HEIGHT REFERENCE SETTING FOR LARGEST WIRE SIZE. CRIMP HEIGHT REFERENCE SETTINGS GREATER THAN THE VALUE SHOWN MAY CAUSE DAMAGE TO THE CRIMP TOOLING, REFER TO THE INSTRUCTION SHEET FOR PROPER SETUP AND ADJUSTMENTS.

ATLANTIC VERSION  
Shown on sheets 1 of 4 & 2 of 4  
(Pacific version shown on sheets 3 of 4 & 4 of 4)

LOC	DIST	REVISIONS					
A	66	P	LTN	DESCRIPTION	DATE	OWN	APPD
		A		RELEASED	18SEP2018	MEH	TE
		B		ECR-22-139838	20MAY2022	LG	RR
		C		ECR-22-150971	30AUG2022	JWC	GB

-	1	1	2119641-1	FEED CAM, AIR FEED	248	
-	1	1	2119082-5	CAM, SNAIL, INSULATION ADJUSTMENT	244	
-	1	1	2079764-1	WASHER, WAVE SPRING, CREST-TO-CREST	243	
3	-	1	1	2119083-1	RETAINER, INSULATION DIAL	242
-	1	1	2844940-1	AIR FEED MODULE	238	
-	1	1	1-356885-2	STOP, SHEAR	237	
-	1	1	462843-9	TERMINAL SUPPORT	175	
-	REF	REF	994970-2	COUNTER, MAGNETIC	164	
-	1	1	1-22281-8	SPRING, COMPRESSION	121	
6	-	1	1	2119955-1	ASSY, LUBRICATOR, SIDE FEED	113
-	1	1	2844908-1	SCREW, LOCKING	99	
-	1	1	2844907-1	POST, LOCKING	98	
-	1	1	1633497-2	REAR STRIP GUIDE	96	
-	2	2	2168083-1	SCR, SKT HD CAP, RoHS, M3 X 8.0	95	
-	1	1	2168083-6	SCR, SKT HD CAP, RoHS, M5 X 6.5	93	
-	2	2	1-2168083-3	SCR, SKT HD CAP, RoHS, M3 X 16	85	
-	1	1	455888-6	SPACER, CRIMPER	82	
-	1	1	6-240641-1	SPACER	81	
-	1	1	1803607-3	DOCUMENTATION PACKAGE	71	
-	1	1	2119740-1	TAG, IDENTIFICATION	67	
-	2	2	2168078-1	SCREW, DRIVE, RH, RoHS, 2 x .188	66	
-	2	2	2-18032-5	SCR, SET, FLT PNT, M5 X 20.0	61	
-	1	1	2168083-2	SCR, SKT HD CAP, RoHS, M4 X 8.0	60	
-	1	1	5-18022-5	SCR, HEX HD CAP, M4 X 6.0	59	
-	1	1	5018030-1	NUT, HEX, REG, RoHS, M3	58	
8	-	1	1	2168083-1	SCR, SKT HD CAP, RoHS, M3 X 8.0	57
-	1	1	1-1338683-0	FEED PAWL	56	
-	4	4	2168083-3	SCR, SKT HD CAP, RoHS, M4 X 12.0	54	
-	2	2	1-2168083-2	SCR, SKT HD CAP, RoHS, M4 X 25	53	
-	1	1	18023-9	SCR, SKT HD CAP M4 X 6.0	49	
-	1	1	1803583-9	APPLICATOR BASIC ASSEMBLY, SF	46	
-	1	1	1803515-1	RAM ASSEMBLY, SF ATLANTIC	44	
-	1	1	1803602-1	SCR, BHSC, RoHS (M8 X 25)	41	
-	1	1	4-2305692-2	PLATE, REAR STRIP GUIDE	29	
-	2	2	22283-1	SPRING, COMPRESSION	27	
-	1	1	356835-1	LEVER, DRAG RELEASE	26	
-	1	1	240792-1	DRAG, TERMINAL	25	
-	1	1	4-189124-6	GUIDE, FRONT STRIP	24	
-	1	1	980371-4	SCR, SKT HD SHLDR 5.0 DIA X 6.0	23	
-	1	1	2168083-2	SCR, SKT HD CAP, RoHS, M4 X 8.0	21	
-	1	1	1-18028-2	WASHER, FLAT, REG M4	20	
-	1	1	2119533-1	STRIPPER, SIDE FEED	19	
1	-	1	1	1673257-8	SHEAR, FLOATING	17
-	2	2	1-2168083-1	SCR, SKT HD CAP, RoHS, M3 X 6	16	
1	-	1	1	1673256-8	PLATE, REAR SHEAR	15
1	-	1	1	1803749-2	HOLDER, REAR SHEAR	14
-	1	1	3-22280-3	SPRING, COMPRESSION	12	
-	-	-	-	-	10	
-	-	-	-	-	9	
1	1	2	1	5-1803554-4	ANVIL, COMBINATION	8
-	-	-	-	-	7	
-	1	1	3-690468-1	DEPRESSOR SHEAR, REAR	6	
-	1	1	1803203-3	BLOCK, FRONT DEPRESSOR	5	
-	1	1	3-238011-1	BLOCK, CRIMPER SPACER	4	
1	1	2	1	6-1803453-9	CRIMPER, INSULATION O	3
-	1	1	1-455888-1	SPACER, CRIMPER	2	
1	1	2	1	3-1803470-5	CRIMPER, WIRE F	1

DIMENSIONS:		TOLERANCES UNLESS OTHERWISE SPECIFIED:		MATERIAL:		FINISH:	
0 PLC	±	1 PLC	±	2 PLC	±	3 PLC	±
4 PLC	±	ANGLES	±				

OWN	M. HERR	10JUL2018
CHK	T. ELBIN	10JUL2018
APPD	C. TOPPER	10JUL2018

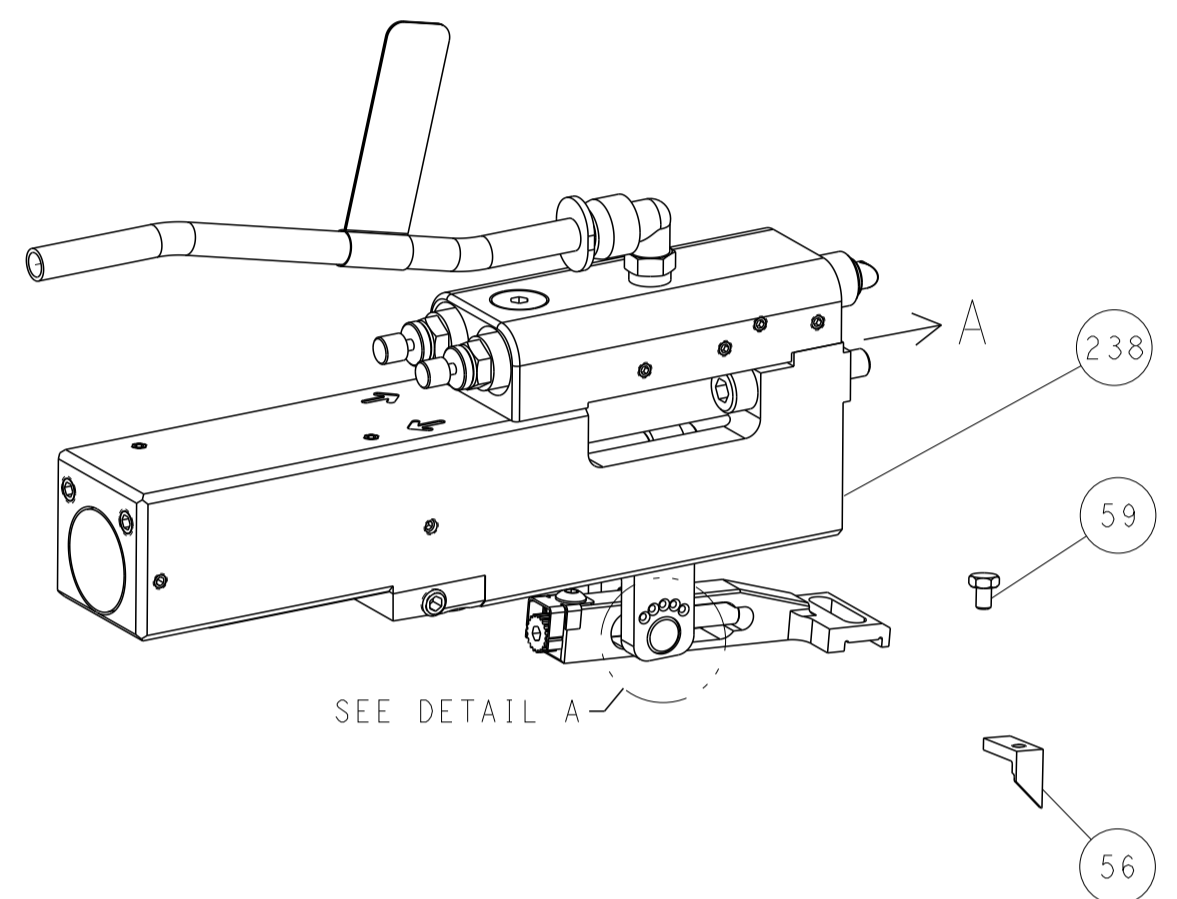
NAME	Ocean Side Feed Applicator		
SIZE	CAGE CODE	DRAWING NO	RESTRICTED TO
A1	00779	2837320	

Customer Accessible Production Drawing SCALE 1:2 SHEET 1 OF 4 REV C

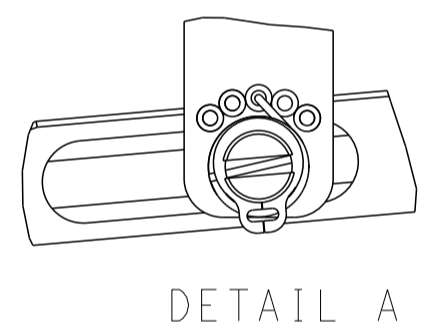
LOC	DIST	REVISIONS					
		P	LTN	DESCRIPTION	DATE	OWN	APVD
A	66	-	-	SEE SHEET 1	-	-	-

# FEED TYPE

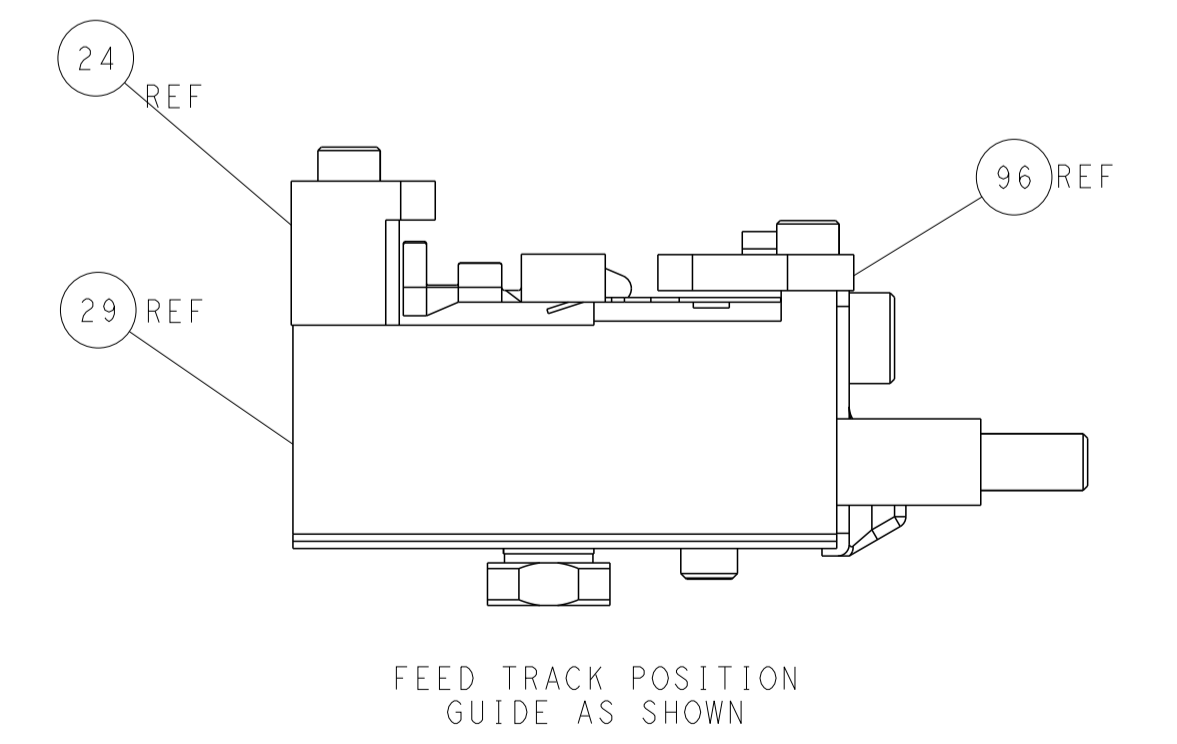
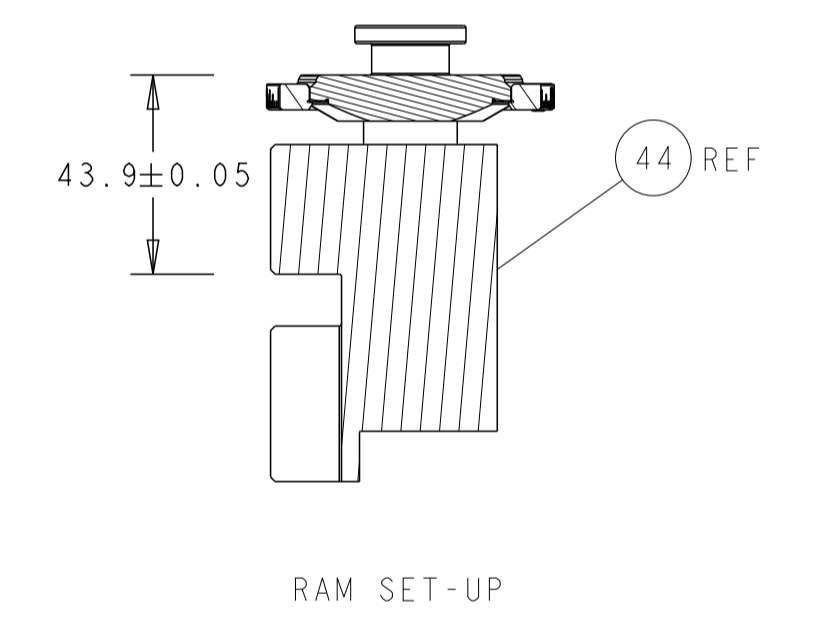
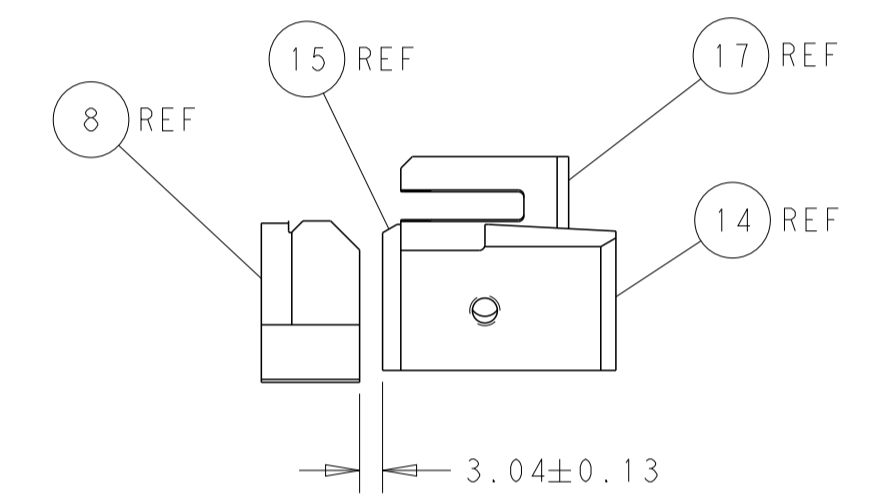
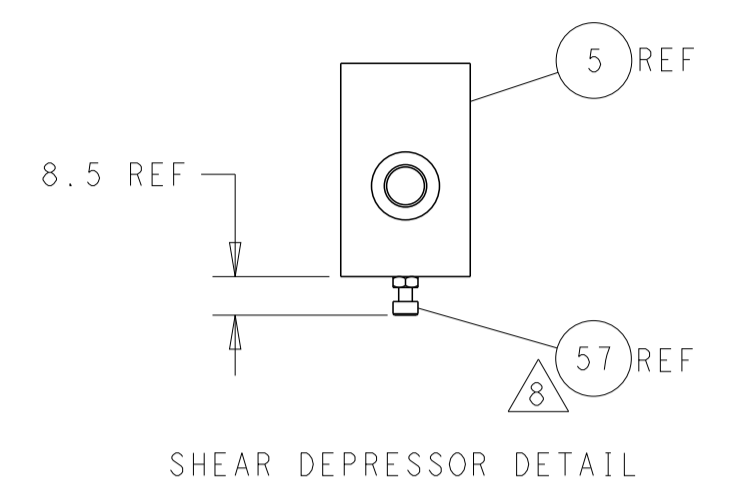
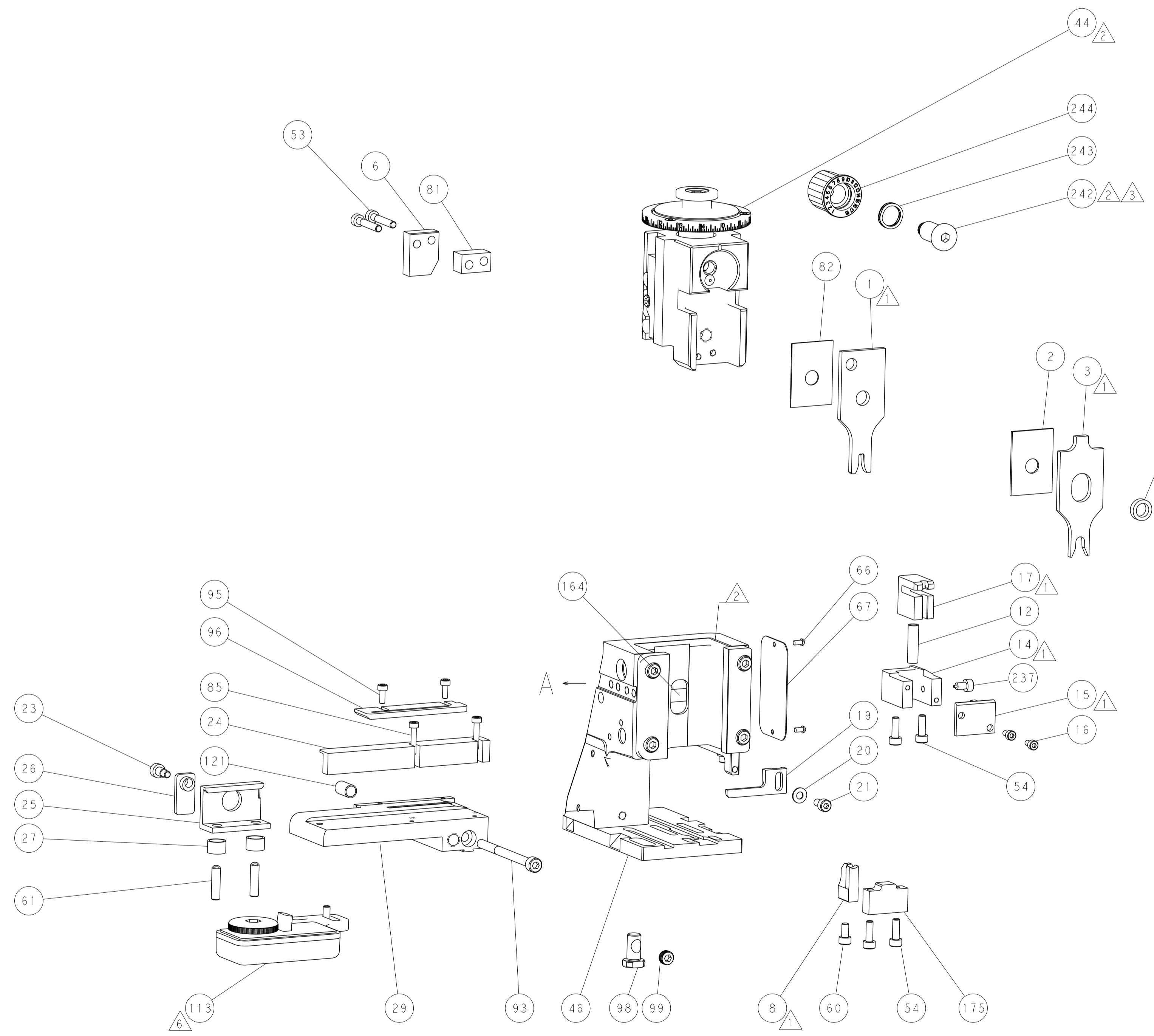
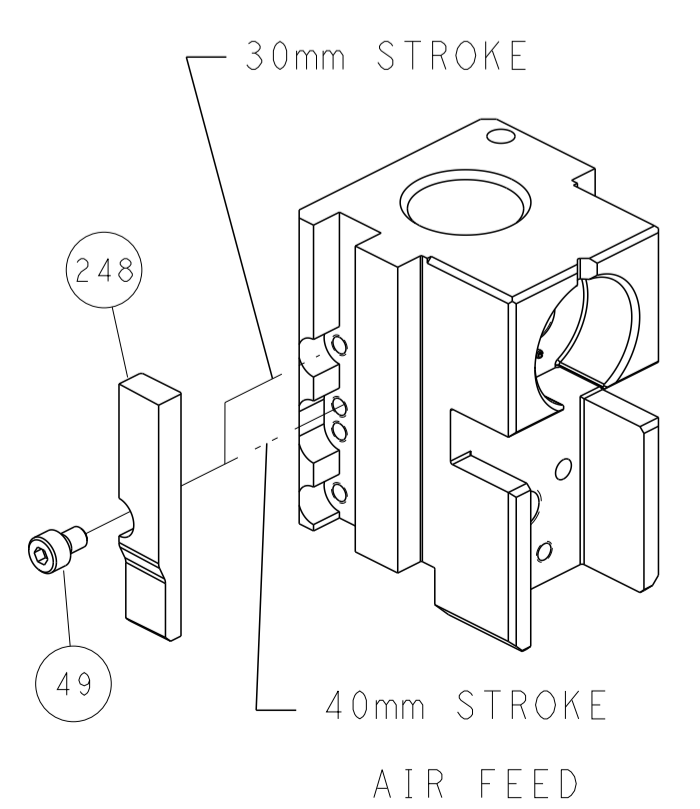
## PNEUMATIC



## FEED SPRING SETTING POSITION (SHOWN FROM REAR SIDE)



## CAM POSITION



**ATLANTIC VERSION**  
 Shown on sheets 1 of 4 & 2 of 4  
 (Pacific version shown on sheets 3 of 4 & 4 of 4)

<small>THIS DRAWING IS UNPUBLISHED. RELEASED FOR PUBLICATION 2018 BY TYCO ELECTRONICS CORPORATION. ALL RIGHTS RESERVED.</small>		DWN: M. HERR 10JUL2018 CHK: T. ELBIN 10JUL2018 APVD: C. TOPPER 10JUL2018	TE Connectivity Harrisburg, PA 17105-3608
DIMENSIONS: mm TOLERANCES UNLESS OTHERWISE SPECIFIED: 0 PLC ± 1 PLC ± 2 PLC ± 3 PLC ± 4 PLC ± ANGLES ± MATERIAL: - FINISH: -		NAME: Ocean Side Feed Applicator PRODUCT SPEC: - APPLICATION SPEC: - WEIGHT: - SCALE: 1:2	SIZE: A1 CAGE CODE: 00779 DRAWING NO: C=2837320 SHEET 2 OF 4 REV C
AMP 4805 REV 31MAR2000		SHEETS 3 & 4 ARE NOT REQUIRED FOR ATLANTIC VERSION	

PART NUMBER	REVISION	DESCRIPTION	FEED TYPE
2-2837320-2	C	FINE CRIMP HEIGHT ADJUST	PNEUMATIC
7-2837320-7	C	CRIMP TOOLING KIT	-

PACIFIC VERSION TERMINATOR  
INTERFACE ADAPTER



APPLICATOR DATA		
CRIMP	SIZE	TYPE
WIRE	3.00 mm [.118]	F
INSUL	6.05 mm [.238]	O
APPLICATOR INSTRUCTIONS 408-35042		

TERMINAL DATA: DELPHI TERMINAL DELPHI CRIMP SPECIFICATION			
TERMINAL NAME: TAXI TERM, F M/P 6.30 SEALED			
WIRE STRIP LENGTH		TERMINAL INSULATION DIAMETER RANGE	
5.23-5.99 mm [.206-.236 IN]		∅2.45-3.95 mm [.096-.156 IN]	
TERMINAL APPLICATION SPECIFICATION	(A)12052455 - pgs 3 & 6 Rev 7/29/14		
TERMINALS APPLIED			
TE TERMINAL	DELPHI TERMINAL	TE SEAL	DELPHI SEAL
(A) 3311158-1	(A) 12052455	(A) 1949378-4	(A) 15324994
		(A) 3311166-1	(A) 15324995

TERMINAL DATA: DELPHI TERMINAL TE CRIMP SPECIFICATION			
TERMINAL NAME: TAXI TERM, F M/P 6.30 SEALED			
WIRE STRIP LENGTH		TERMINAL INSULATION DIAMETER RANGE	
5.23-5.99 mm [.206-.236 IN]		∅2.45-3.95 mm [.096-.156 IN]	
TERMINAL APPLICATION SPECIFICATION	(A)12052455 - pgs 3 & 6 Rev 7/29/14		
TERMINALS APPLIED			
TE TERMINAL	DELPHI TERMINAL	TE SEAL	DELPHI SEAL
(B) 3311158-1	(B) 12052455	(B) 1949378-4	(B) 15324994
		(B) 3311166-1	(B) 15324995

WIRE SIZE	CRIMP HEIGHT mm [INCH]	CRIMP HEIGHT REFERENCE SETTING
14 AWG OR 2.00mm2	1.75+/-0.05 [.069+/- .002]	7.6
1.00mm2	1.60+/-0.05 [.063+/- .002]	8.5

WIRE SIZE	CRIMP HEIGHT mm [INCH]	CRIMP HEIGHT REFERENCE SETTING
16 AWG OR 1.50mm2	1.67+/-0.05 [.066+/- .002]	8.2



- 1 RECOMMENDED SPARE PARTS
- 2 REFER TO SUPPLIED INSTRUCTION SHEET FOR CLEANING, LUBRICATION AND STORAGE OF APPLICATOR.
- 3 APPLY PART NUMBER 2-23419-6 LOCTITE TO THREADS OF ITEM 242.
- 4 CRIMP HEIGHT REFERENCE SETTING WAS THE SETTING USED WHEN THE APPLICATOR WAS QUALIFIED AT THE FACTORY. ADJUSTMENT MAY BE NECESSARY WHEN RUNNING APPLICATOR IN THE FIELD.
- 5 TERMINAL PITCH NOT COMPATIBLE WITH MECHANICAL FEED.
- 6 TERMINAL LUBRICANT IS RECOMMENDED.
7. UNLESS SPECIFIED OTHERWISE TORQUE VALUES SHALL BE USED PER DOCUMENT 101-35000.
- 8 APPLY TORO-SEAL IN ALLEN SOCKET TO FILL HOLE AFTER FLAT HD HAS BEEN ADJUSTED TO CORRECT HEIGHT AT QUALIFICATION. APPLY #1-23419-5 LOC-TITE TO THREADS.

**\*WARNING**  
ON INSTALLATION, SET WIRE DISC TO CRIMP HEIGHT REFERENCE SETTING FOR LARGEST WIRE SIZE. CRIMP HEIGHT REFERENCE SETTINGS GREATER THAN THE VALUE SHOWN MAY CAUSE DAMAGE TO THE CRIMP TOOLING, REFER TO THE INSTRUCTION SHEET FOR PROPER SETUP AND ADJUSTMENTS.

PACIFIC VERSION  
Shown on sheets 3 of 4 & 4 of 4  
(Atlantic version shown on sheets 1 of 4 & 2 of 4)

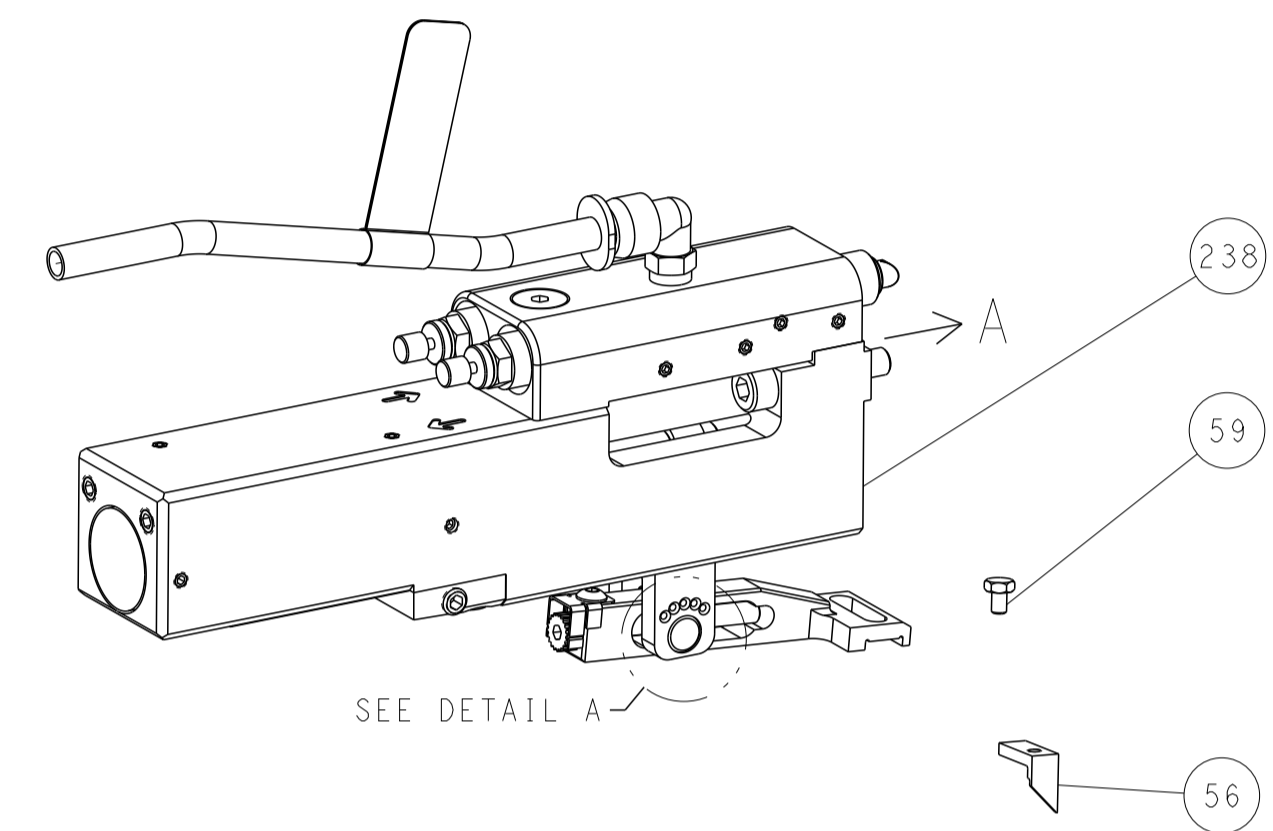
LOC	DIST	REVISIONS					
A	66	P	LTN	DESCRIPTION	DATE	OWN	APVD
		-		SEE SHEET 1	-	-	-

-	1	2119082-5	CAM, SNAIL, INSULATION ADJUSTMENT	244	
-	1	2079764-1	WASHER, WAVE SPRING, CREST-TO-CREST	243	
3	-	1	2119083-1	RETAINER, INSULATION DIAL	242
-	1	2844940-1	AIR FEED MODULE	238	
-	1	1-356885-2	STOP, SHEAR	237	
-	1	462843-9	TERMINAL SUPPORT	175	
-	REF	994970-2	COUNTER, MAGNETIC	164	
-	1	2119641-2	FEED CAM, AIR FEED	151	
-	1	2168083-8	SCR, SKT HD CAP, RoHS, M4 X 16	144	
-	4	2168083-9	SCR, SKT HD CAP, RoHS, M4 X 20	143	
-	1	1-1803583-0	APPLICATOR BASIC ASSEMBLY, SF	141	
-	1	1803516-1	RAM ASSEMBLY, SF PACIFIC	140	
-	1	1-22281-8	SPRING, COMPRESSION	121	
6	-	1	2119955-1	ASSY, LUBRICATOR, SIDE FEED	113
-	1	2844908-1	SCREW, LOCKING	99	
-	1	2844907-1	POST, LOCKING	98	
-	1	1633497-2	REAR STRIP GUIDE	96	
-	2	2168083-1	SCR, SKT HD CAP, RoHS, M3 X 8.0	95	
-	1	2168083-6	SCR, SKT HD CAP, RoHS, M5 X 65	93	
-	2	1-2168083-3	SCR, SKT HD CAP, RoHS, M3 X 16	85	
-	1	455888-6	SPACER, CRIMPER	82	
-	1	6-240641-1	SPACER	81	
-	1	1803607-3	DOCUMENTATION PACKAGE	71	
-	1	2119740-1	TAG, IDENTIFICATION	67	
-	2	2168078-1	SCREW, DRIVE, RH, RoHS, 2 x .188	66	
-	2	2-18032-5	SCR, SET, FLT PNT, M5 X 20.0	61	
-	1	5-18022-5	SCR, HEX HD CAP, M4 X 6.0	59	
-	1	5018030-1	NUT, HEX, REG, RoHS, M3	58	
-	1	2168083-1	SCR, SKT HD CAP, RoHS, M3 X 8.0	57	
8	-	1	1-1338683-0	FEED PAWL	56
-	2	1-2168083-2	SCR, SKT HD CAP, RoHS, M4 X 25	53	
-	1	18023-9	SCR, SKT HD CAP M4 X 6.0	49	
-	1	1803602-1	SCR, BHSC, RoHS (M8 X 25)	41	
-	1	4-2305692-2	PLATE, REAR STRIP GUIDE	29	
-	2	22283-1	SPRING, COMPRESSION	27	
-	1	356835-1	LEVER, DRAG RELEASE	26	
-	1	240792-1	DRAG, TERMINAL	25	
-	1	4-189124-6	GUIDE, FRONT STRIP	24	
-	1	980371-4	SCR, SKT HD SHLDR 5.0 DIA X 6.0	23	
-	1	2168083-2	SCR, SKT HD CAP, RoHS, M4 X 8.0	21	
-	1	1-18028-2	WASHER, FLAT, REG M4	20	
-	1	2119533-1	STRIPPER, SIDE FEED	19	
1	-	1	1673257-8	SHEAR, FLOATING	17
-	2	1-2168083-1	SCR, SKT HD CAP, RoHS, M3 X 6	16	
1	-	1	1673256-8	PLATE, REAR SHEAR	15
1	-	1	1803749-2	HOLDER, REAR SHEAR	14
-	1	3-22280-3	SPRING, COMPRESSION	12	
-	-	-	-	10	
-	-	-	-	9	
1	1	5-1803554-4	ANVIL, COMBINATION	8	
-	-	-	-	7	
-	1	3-690468-1	DEPRESSOR SHEAR, REAR	6	
-	1	1803203-3	BLOCK, FRONT DEPRESSOR	5	
-	1	3-238011-1	BLOCK, CRIMPER SPACER	4	
1	1	6-1803453-9	CRIMPER, INSULATION O	3	
-	1	1-455888-1	SPACER, CRIMPER	2	
1	1	3-1803470-5	CRIMPER, WIRE F	1	

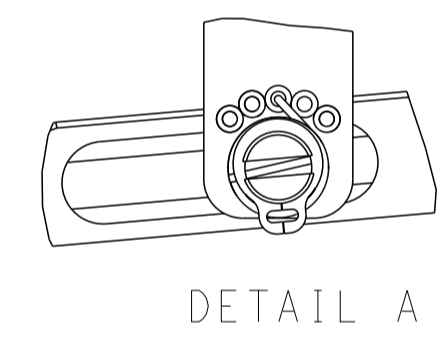
DIMENSIONS:		TOLERANCES UNLESS OTHERWISE SPECIFIED:		OWN	M. HERR	10JUL2018	TE Connectivity Harrisburg, PA 17105-3608
mm	0 PLC ± 1 PLC ± 2 PLC ± 3 PLC ± 4 PLC ± ANGLES ±	mm	±	CHK	T. ELBIN	10JUL2018	
MATERIAL	FINISH	APVD	C. TOPPER	10JUL2018	NAME		Ocean Side Feed Applicator
		APPLN SPEC			SIZE	CAGE CODE	DRAWING NO
		RESTRICTED TO			A1	00779	2837320
		WEIGHT			Customer Accessible Production Drawing		
		SCALE			1:2	SHEET	3 OF 4
		REV			C		

LOC	DIST	REV	DATE	BY	APPD
A	66				

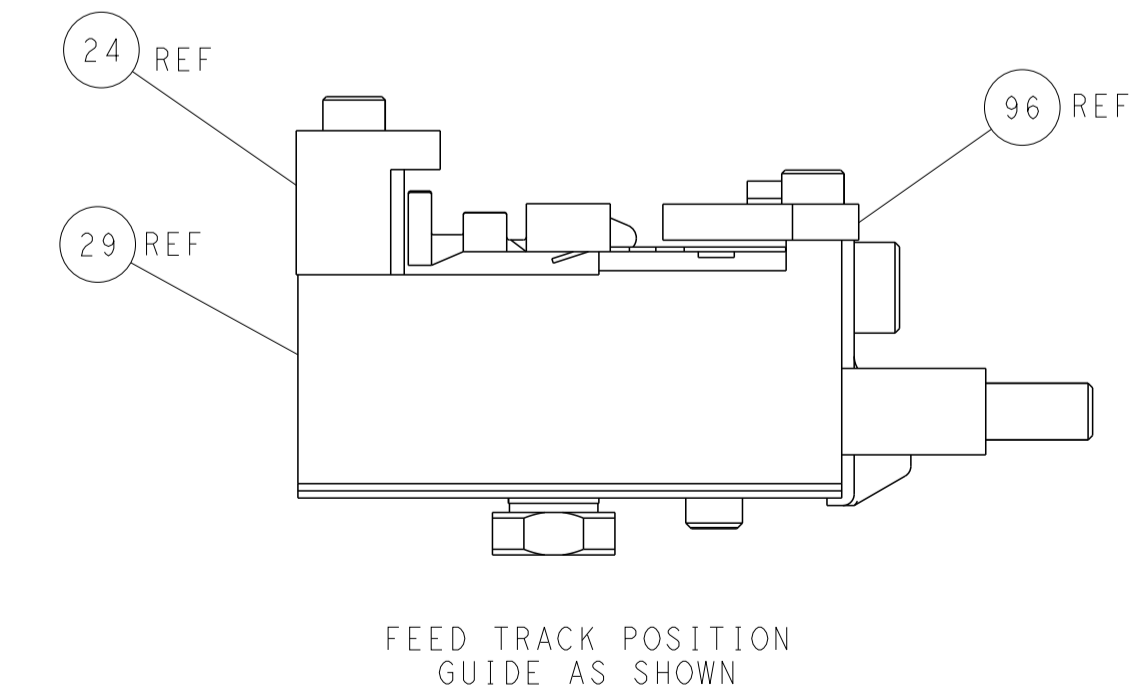
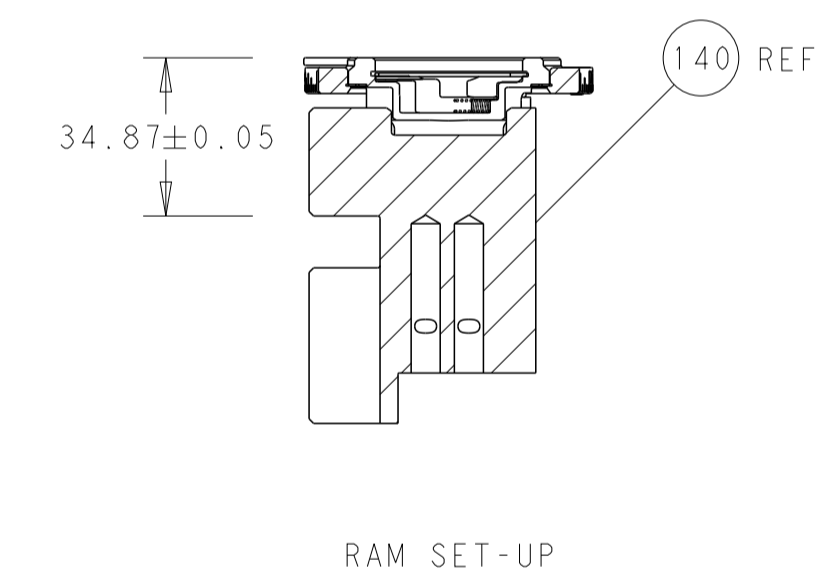
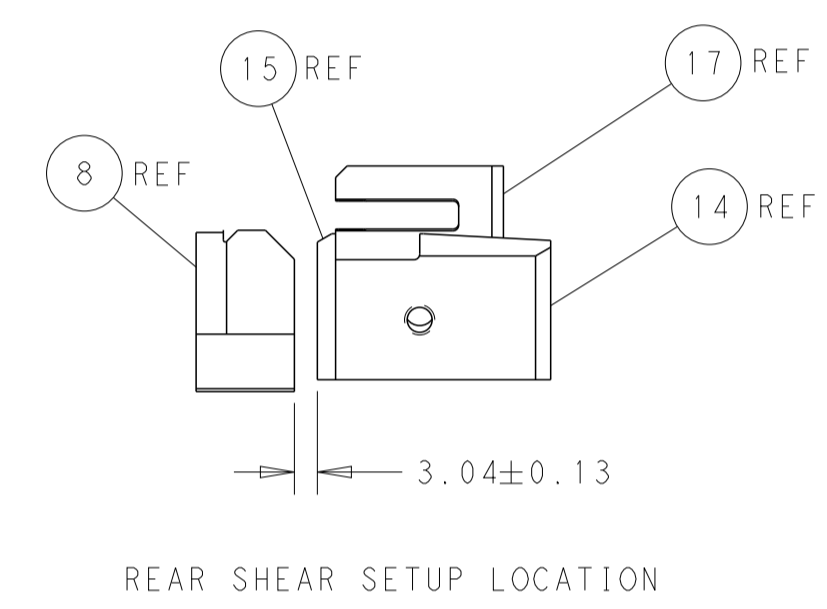
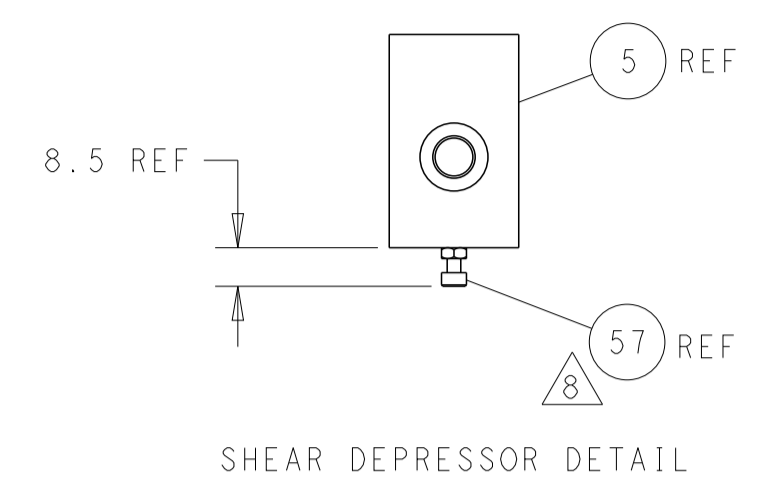
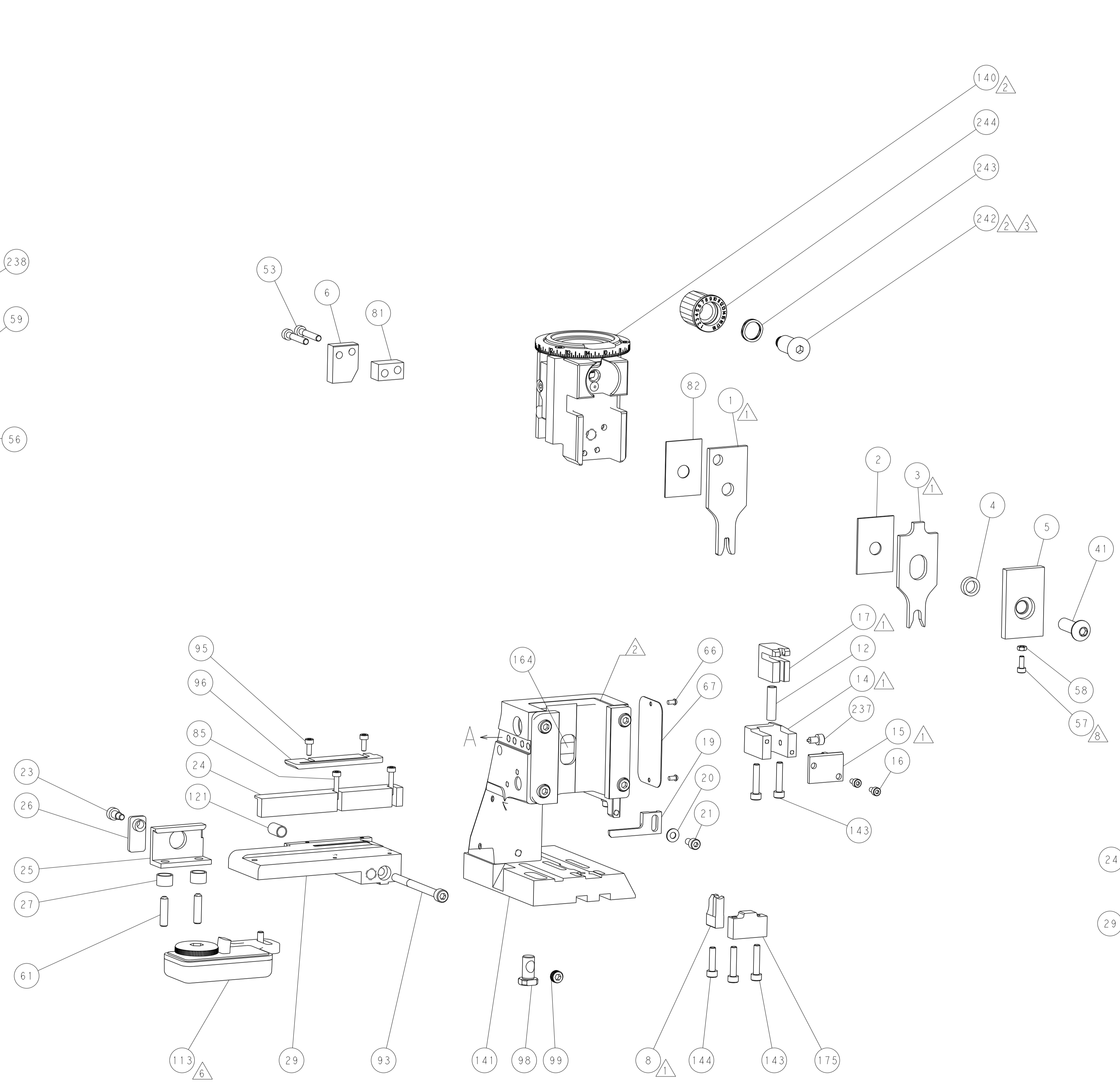
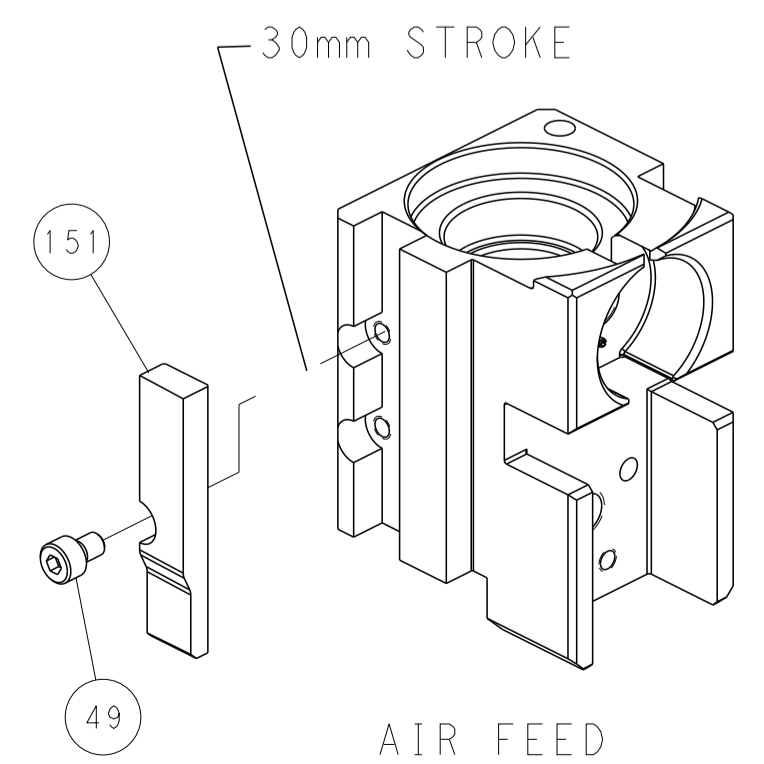
### FEED TYPE PNEUMATIC



### FEED SPRING SETTING POSITION (SHOWN FROM REAR SIDE)



### CAM POSITION



**PACIFIC VERSION**  
 Shown on sheets 3 of 4 & 4 of 4  
 (Atlantic version shown on sheets 1 of 4 & 2 of 4)

<small>THIS DRAWING IS UNPUBLISHED. RELEASED FOR PUBLICATION 2018. COPYRIGHT 2018 BY TYCO ELECTRONICS CORPORATION. ALL RIGHTS RESERVED.</small>		DWN: M. HERR 10JUL2018 CHK: T. ELBIN 10JUL2018 APVD: C. TOPPER 10JUL2018	NAME: Ocean Side Feed Applicator SIZE: A1 CAGE CODE: 00779 DRAWING NO: 2837320	RESTRICTED TO: C
DIMENSIONS: mm TOLERANCES UNLESS OTHERWISE SPECIFIED: 0 PLC ± 1 PLC ± 2 PLC ± 3 PLC ± 4 PLC ± ANGLES ± MATERIAL: - FINISH: -	APPLICATION SPEC: - WEIGHT: - SCALE: 1:2	SHEET: 4 OF: 4 REV: C	CUSTOMER ACCESSIBLE PRODUCTION DRAWING	