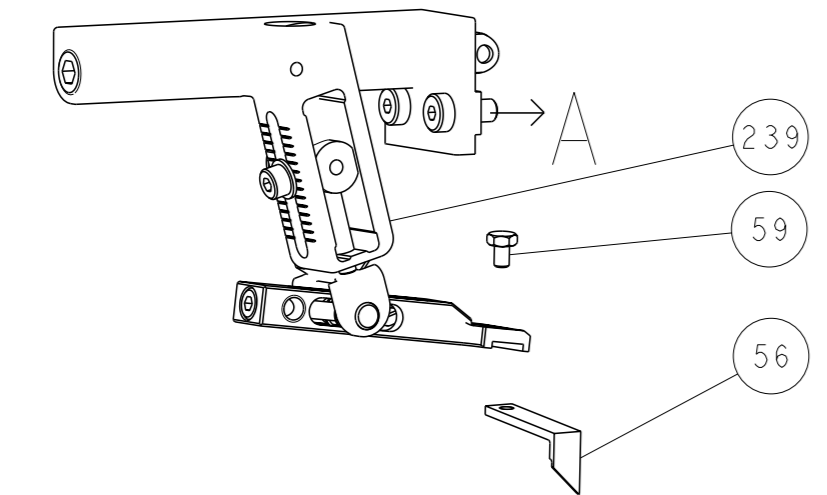
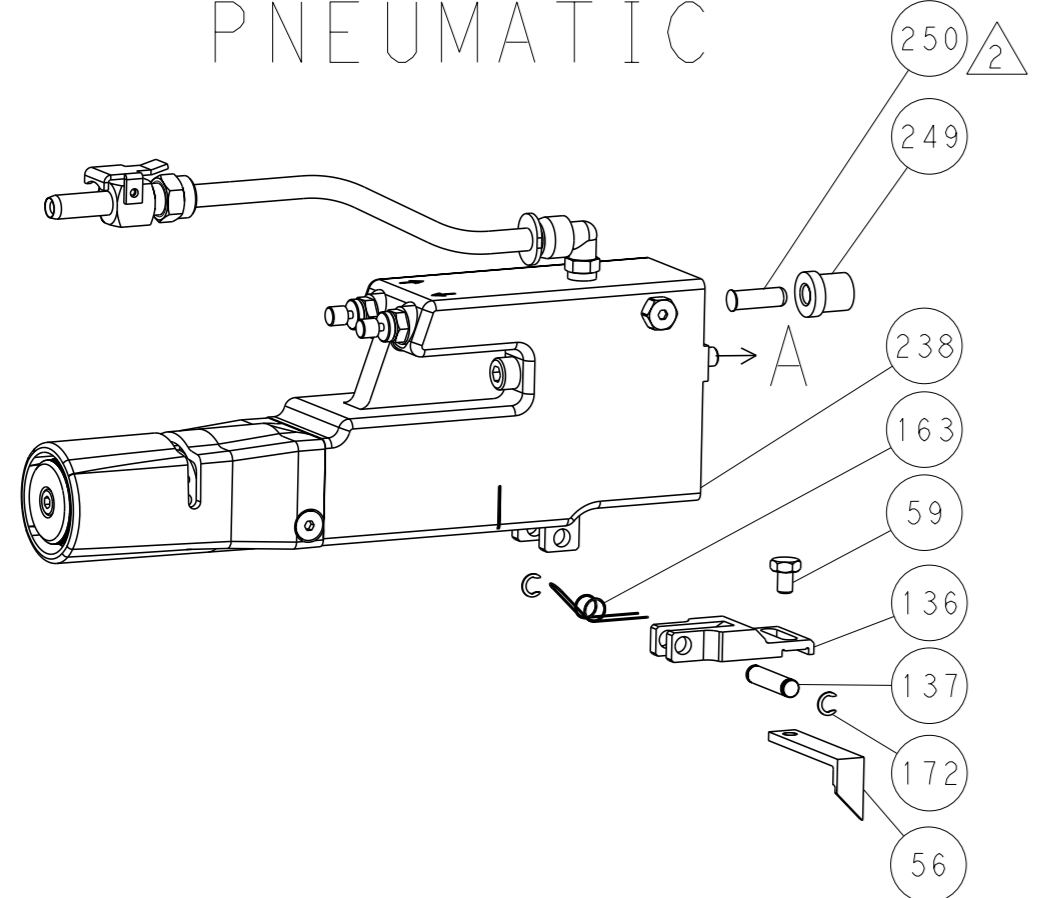


LOC		DIST		REVISIONS			
A	66	P	LYR	DESCRIPTION	DATE	OWN	APVD
		-		SEE SHEET 1			

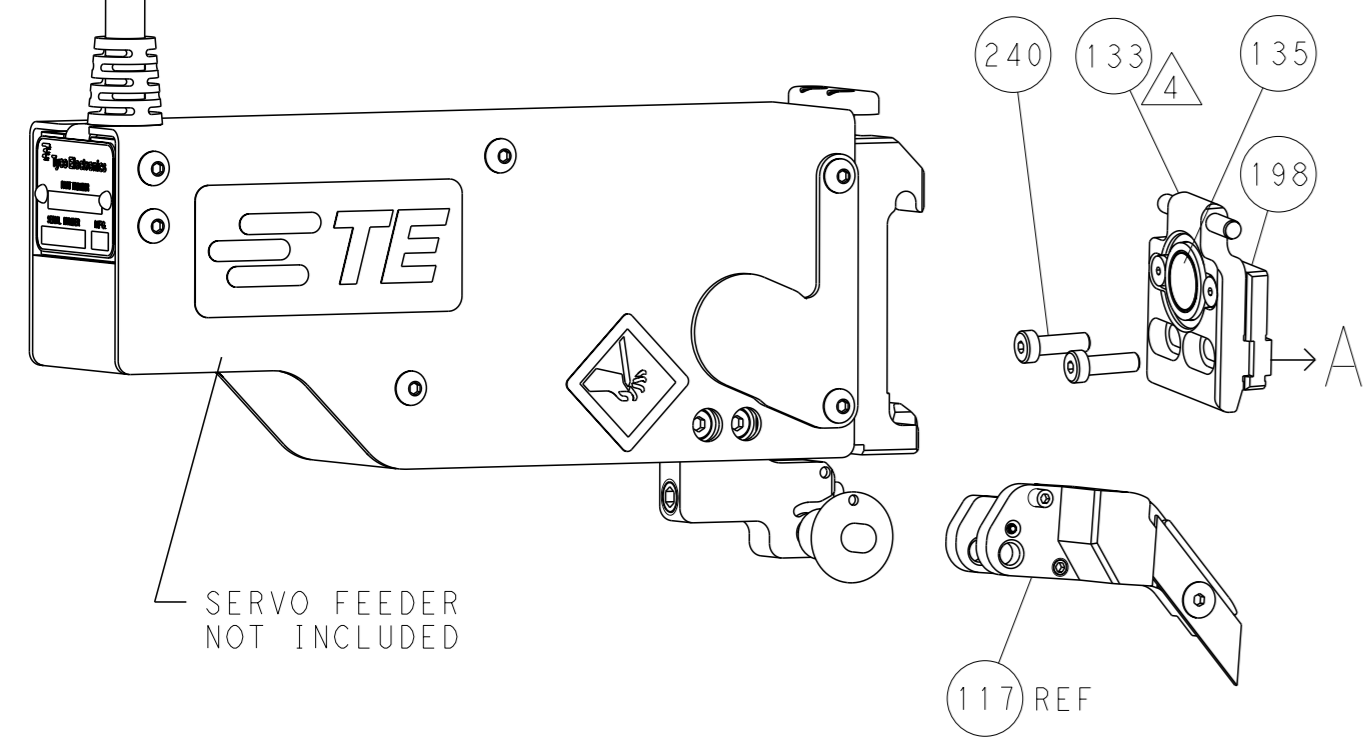
FEED TYPE MECHANICAL



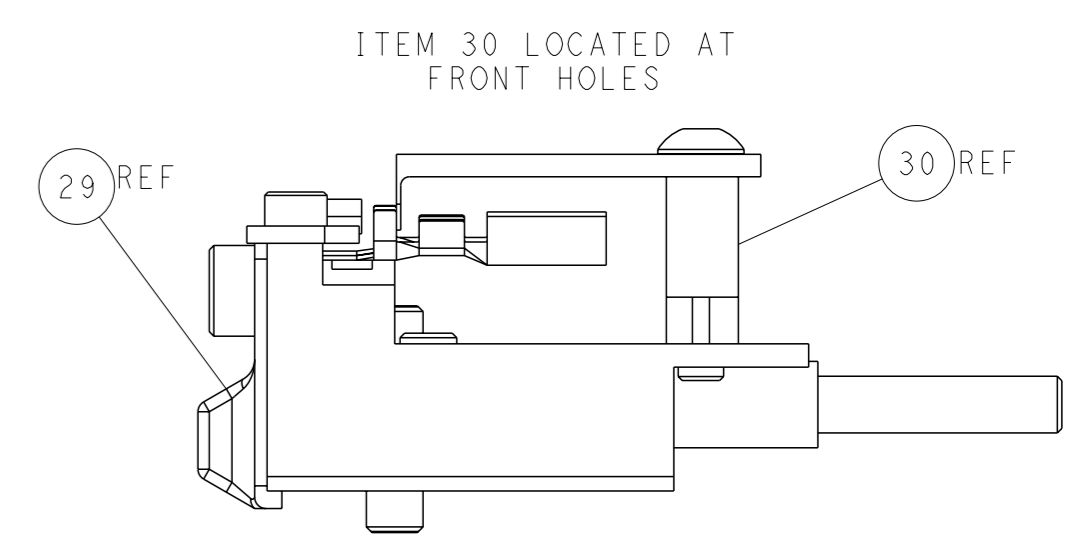
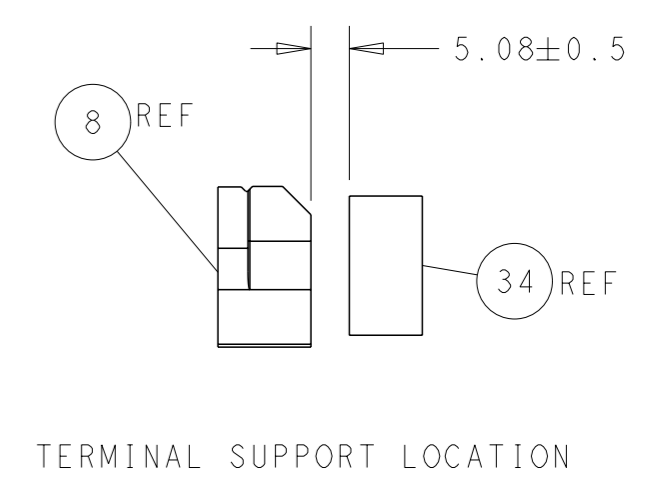
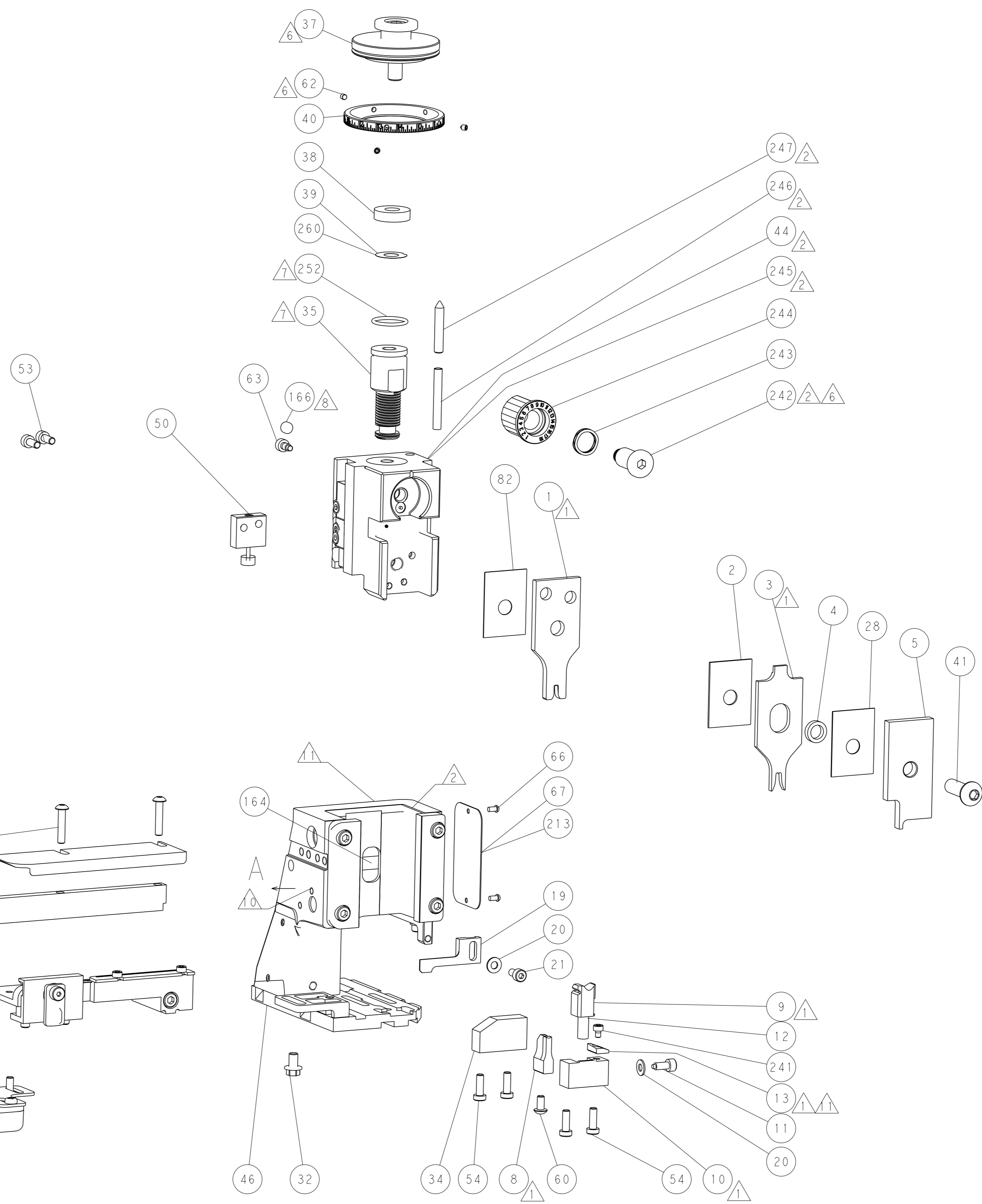
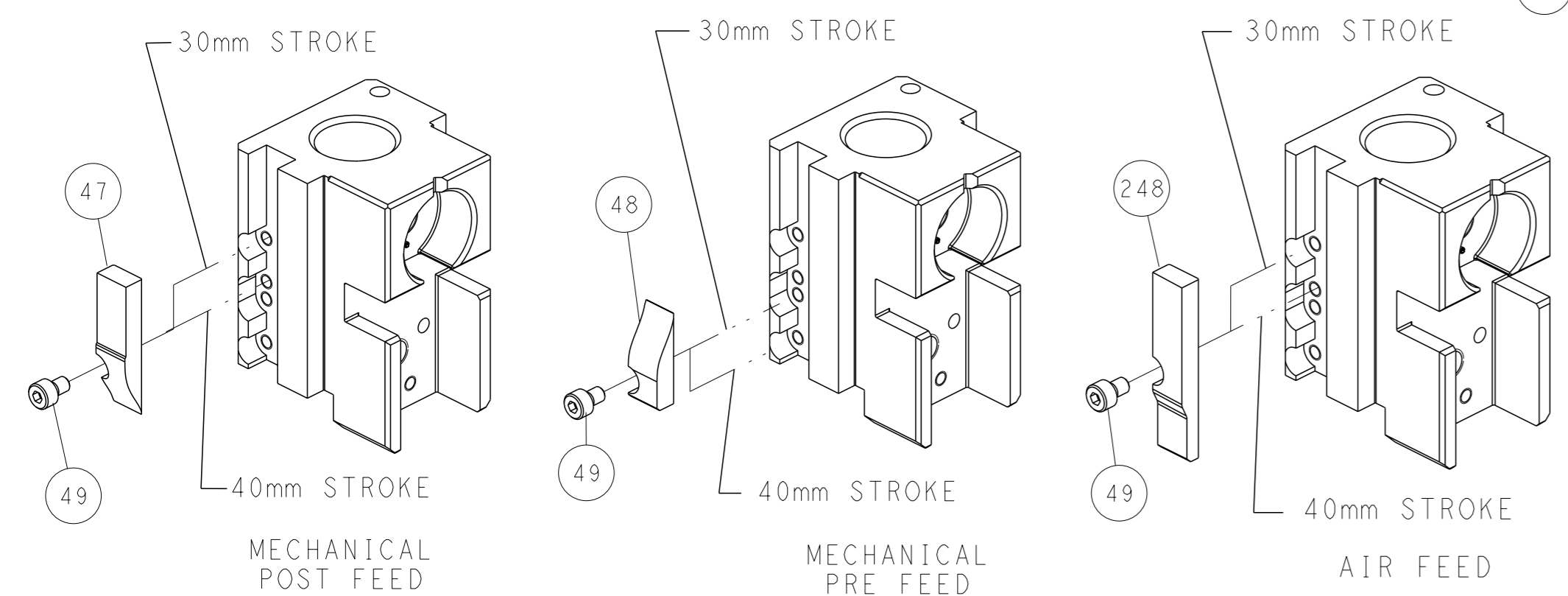
PNEUMATIC



SERVO LATCH PLATE



CAM POSITIONS



ATLANTIC VERSION
 Shown on sheets 1 of 4 & 2 of 4
 (Pacific version shown on sheets 3 of 4 & 4 of 4)

DIMENSIONS: mm 		TOLERANCES UNLESS OTHERWISE SPECIFIED: 0 PLC ± 1 PLC ± 2 PLC ± 3 PLC ± 4 PLC ± ANGLES ±		OWN: B. WEAVER 28MAR2017 CHK: T. ELBIN 28MAR2017 APVD: T. ELBIN 28MAR2017 PRODUCT SPEC: APPLICATION SPEC: WEIGHT: MATERIAL:		NAME: Ocean Side Feed Applicator SIZE: A1 CAGE CODE: 00779 DRAWING NO: ©=2836694 SCALE: 1:2 SHEET: 2 of 4 REV: A		RESTRICTED TO:	
-----------------------	--	---	--	---	--	--	--	----------------	--

APPLICATOR STYLE CONVERSION CHART table with columns: CONVERT TO, PART NUMBERS REQUIRED, PNEUMATIC FEED, SERVO LATCH PLATE, SMART APPLICATOR, MECHANICAL FEED, etc.

APPLICATOR DATA table with columns: CRIMP, SIZE, TYPE, WIRE, INSUL, APPLICATOR INSTRUCTIONS.

TERMINAL DATA: TE TERMINAL, TE CRIMP SPECIFICATION, WIRE STRIP LENGTH, INSULATION DIAMETER RANGE, TERMINAL APPLICATION SPECIFICATION, TERMINALS APPLIED table.

WIRE SIZE, CRIMP HEIGHT mm [INCH], CRIMP HEIGHT REFERENCE SETTING table with crimping diagrams.



- RECOMMENDED SPARE PARTS
GREASE BEARING SURFACES LIGHTLY
LUBRICATE DAILY PER THE APPLICATOR INSTRUCTION SHEET...
APPLICATOR SPECIFIC DATA TO BE ENTERED INTO BLANK MEMORY CHIP...
ADJUSTMENT OF THE STRIPPER MAY BE REQUIRED...
APPLY PART NUMBER 1-23419-5 LOCTITE...
GREASE THREADS, GROOVE AND O-RING...
MAGNET MUST BE ORIENTED CORRECTLY...
CRIMP HEIGHT REFERENCE SETTING...
SPARE FEED CAM STORAGE LOCATION...
CONVERT THE APPLICATOR TO A NON-CARRIER CUTTING STYLE...
TERMINAL LUBRICANT IS RECOMMENDED.

*WARNING
ON INSTALLATION, SET WIRE DISC, ITEM 40 TO LARGEST WIRE SIZE SETTING. USE OF SETTINGS BELOW MINIMUM REQUIRED CRIMP HEIGHT SETTING WILL CAUSE DAMAGE TO CRIMP TOOLING.

PACIFIC VERSION
Shown on sheets 3 of 4 & 4 of 4
(Atlantic version shown on sheets 1 of 4 & 2 of 4)

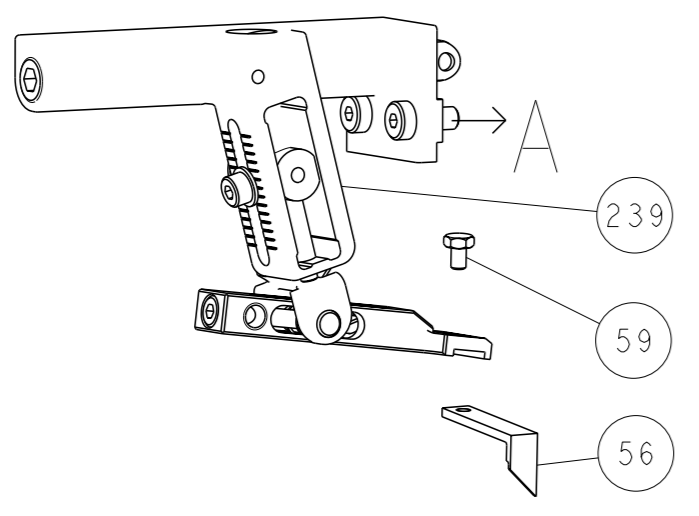
SET UP GAUGE 2119599-1, REVISIONS table with columns: P, LTH, DESCRIPTION, DATE, QTY, APVD.

Main assembly parts list table with columns: QTY, P, LTH, PART NO, DESCRIPTION, ITEM NO.

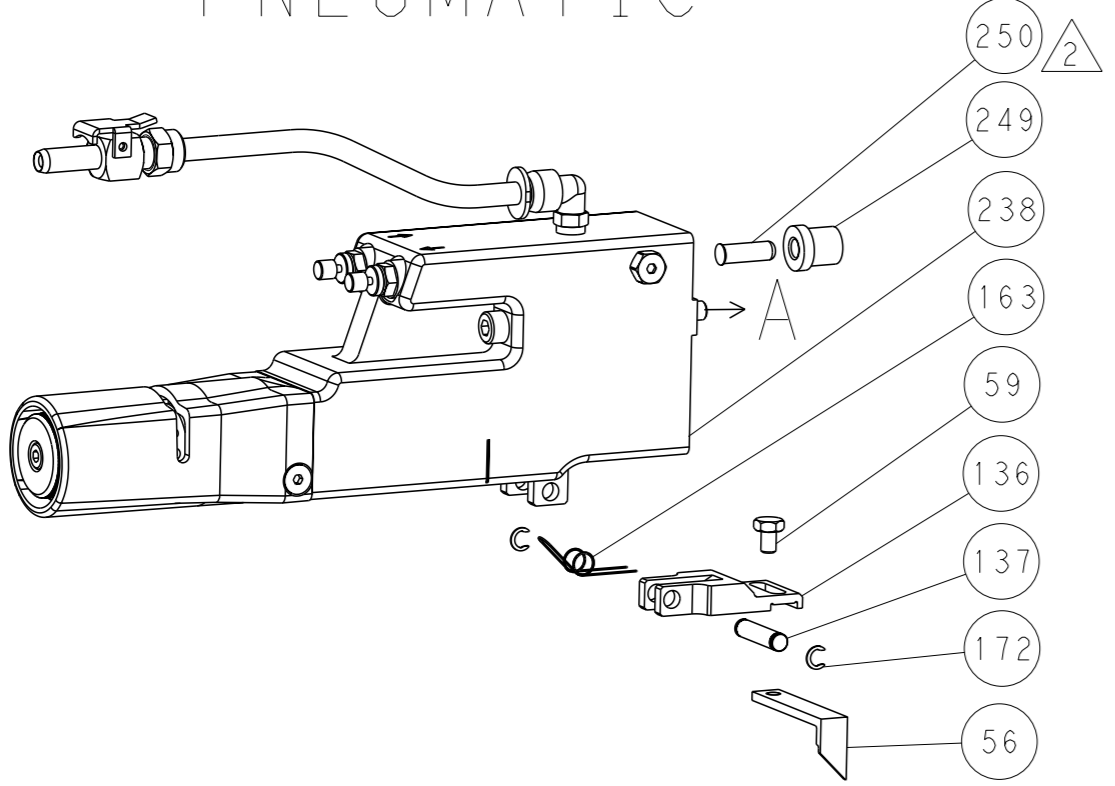
Customer information table including DIMENSIONS, TOLERANCES, MATERIAL, NAME, SIZE, CASE CODE, DRAWING NO, RESTRICTED TO.

LOC	DIST	REVISIONS					
A	66	P	LYR	DESCRIPTION	DATE	OWN	APVD
		-		SEE SHEET 1			

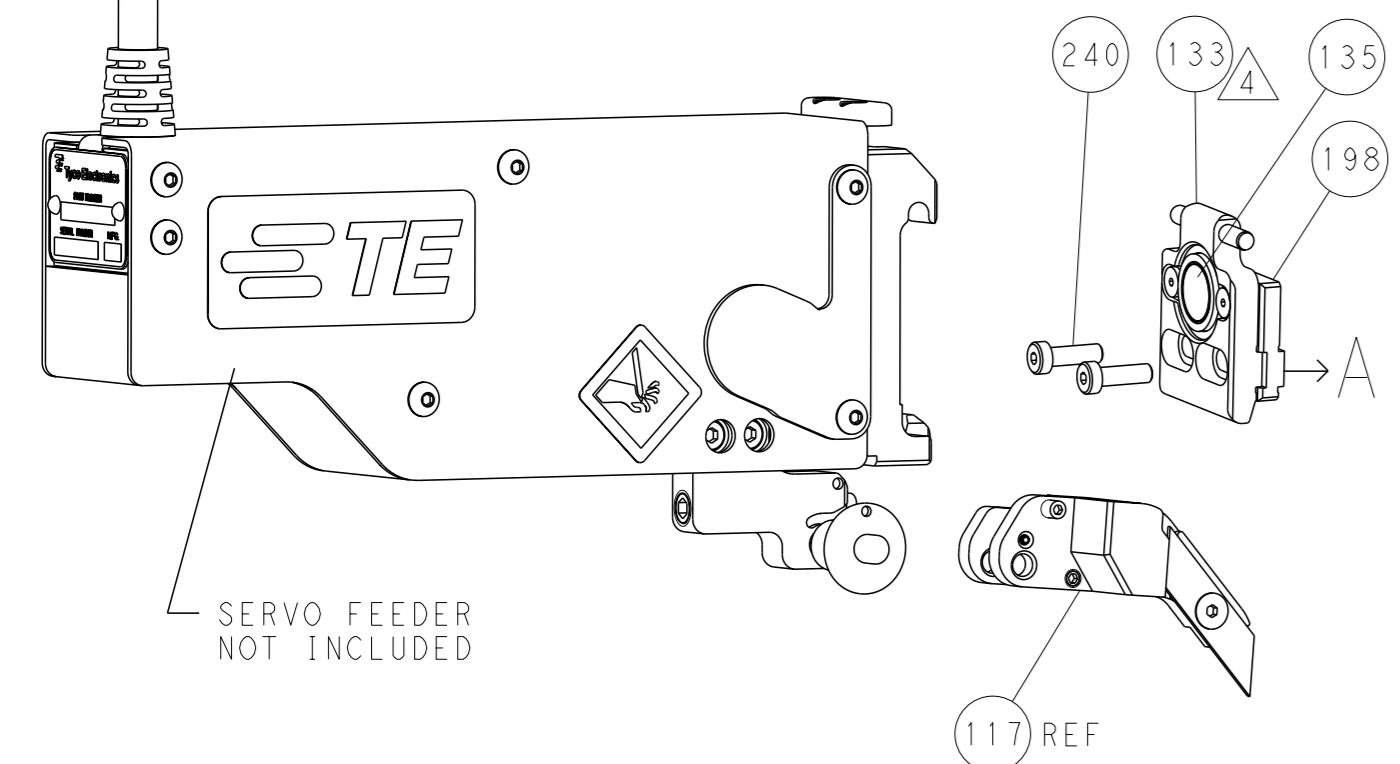
FEED TYPE MECHANICAL



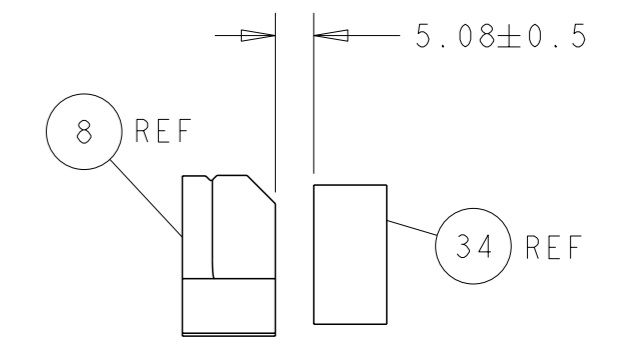
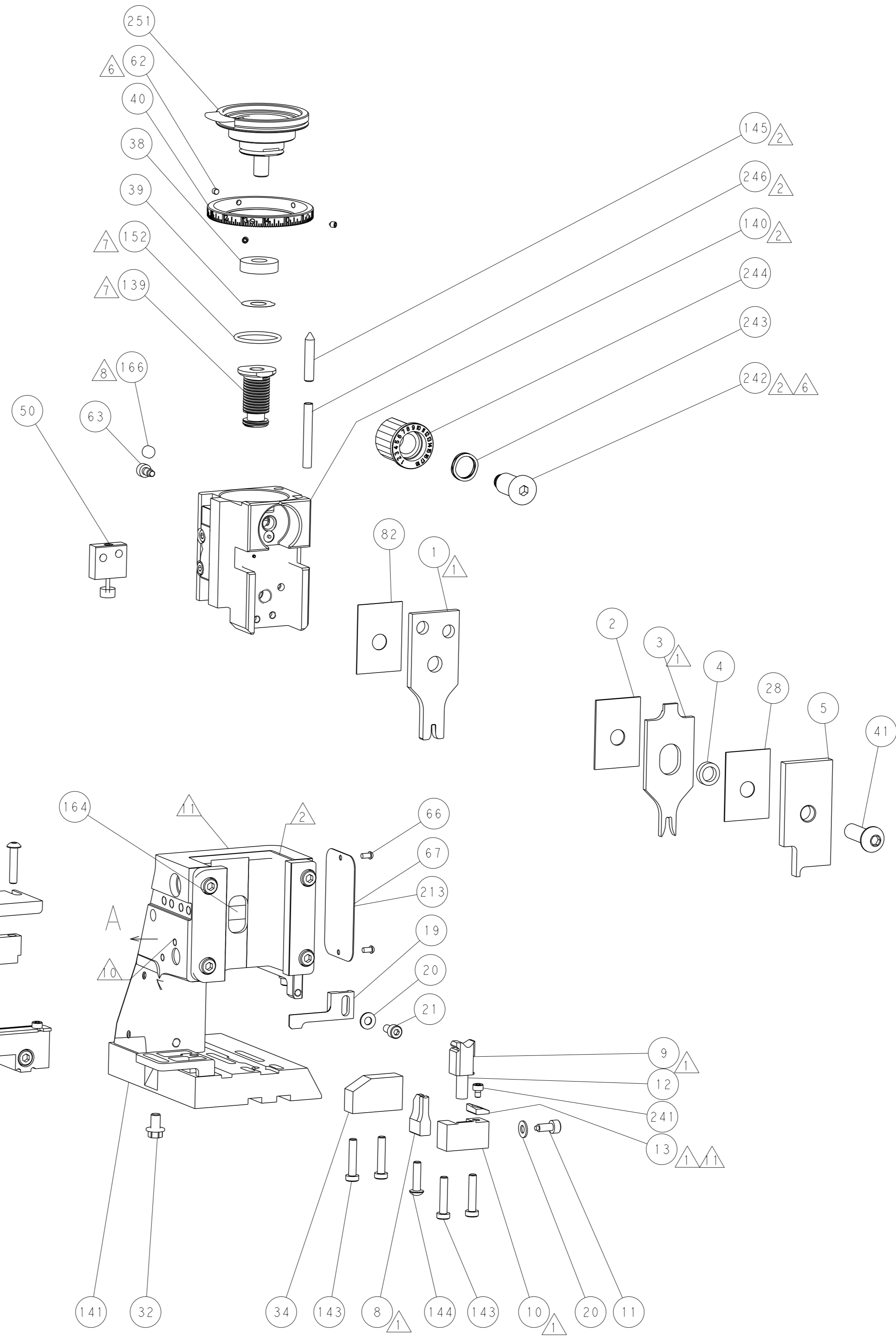
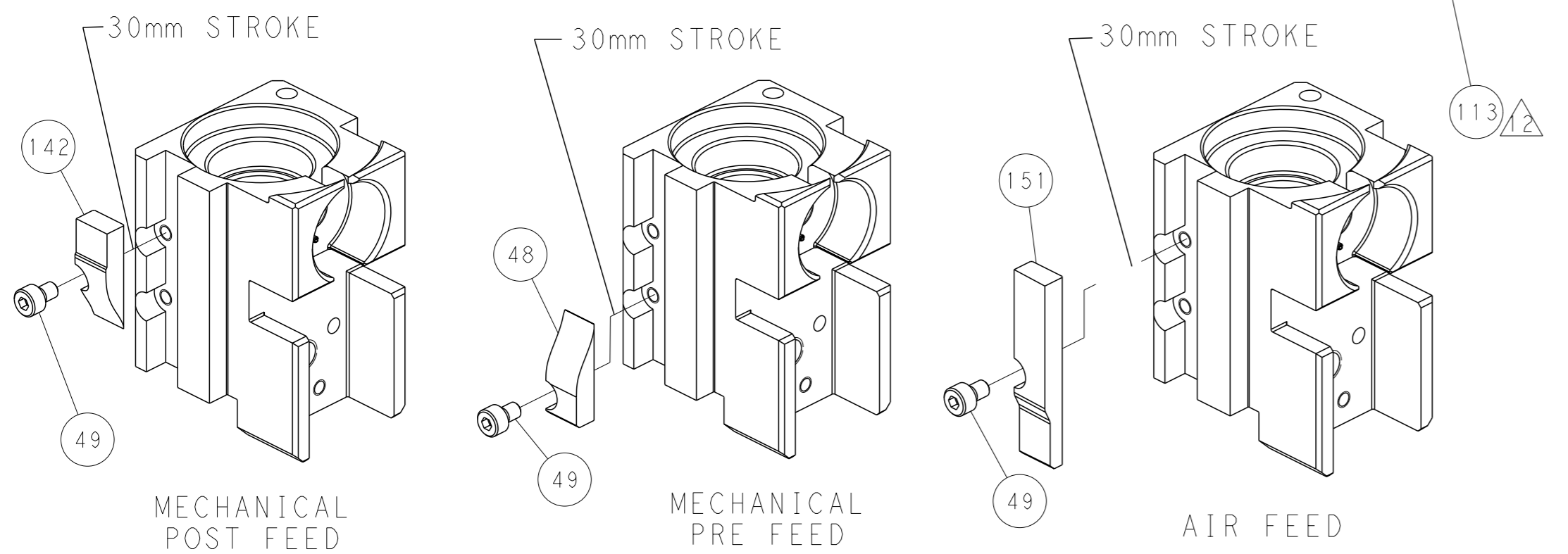
PNEUMATIC



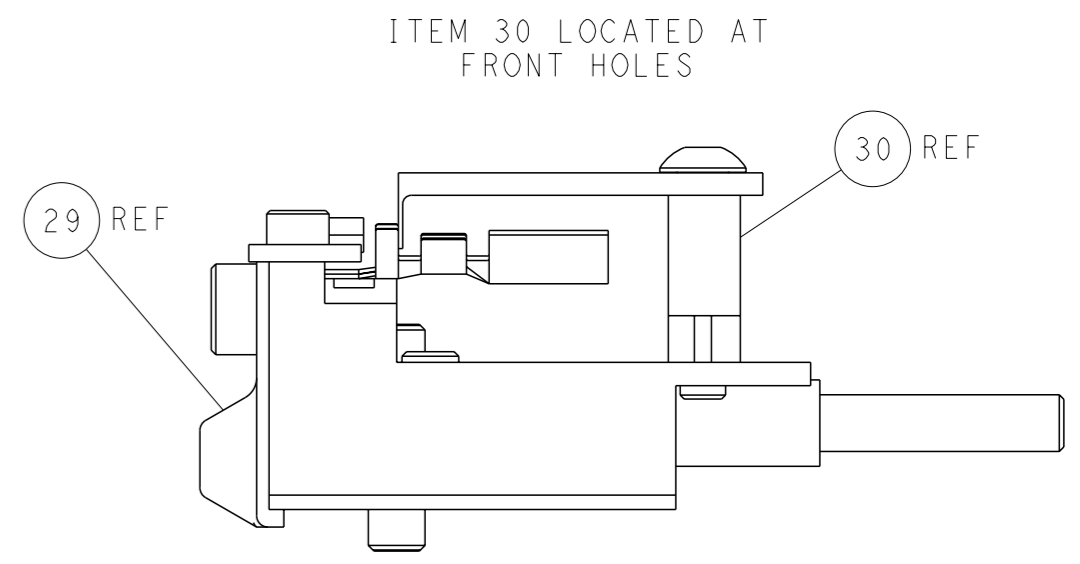
SERVO LATCH PLATE



CAM POSITIONS



TERMINAL SUPPORT LOCATION



FEED TRACK POSITION
GUIDE BY INSULATION BARREL

PACIFIC VERSION
 Shown on sheets 3 of 4 & 4 of 4
 (Atlantic version shown on sheets 1 of 4 & 2 of 4)

<small>THIS DRAWING IS A CONTROLLED DOCUMENT FOR TYCO ELECTRONICS CORPORATION. IT IS SUBJECT TO CHANGE AND THE CONTROLLER ENGINEERING ORGANIZATION SHOULD BE CONTACTED FOR THE LATEST REVISION.</small>		OWN: B. WEAVER 28MAR2017 CHK: T. ELBIN 28MAR2017 APVD: T. ELBIN 28MAR2017	NAME: TE Connectivity Harrisburg, PA 17105-3608
DIMENSIONS: mm TOLERANCES UNLESS OTHERWISE SPECIFIED: 0 PLC ± 1 PLC ± 2 PLC ± 3 PLC ± 4 PLC ± ANGLES FINISH ±	APPLICATION SPEC: - MATERIAL: -	PRODUCT SPEC: - APPLICATION SPEC: - WEIGHT: -	SIZE: A1 CAGE CODE: 00779 DRAWING NO: C=2836694 RESTRICTED TO: -
Customer Accessible Production Drawing		SCALE: 1:2	SHEET 4 OF 4 REV A