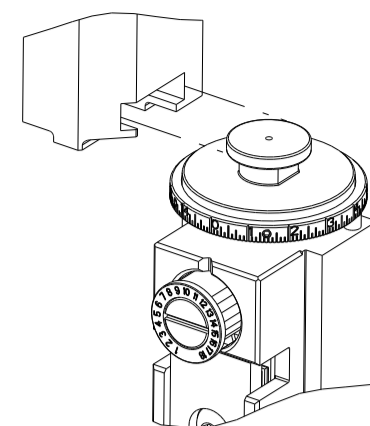


PART NUMBER	REVISION	DESCRIPTION	FEED TYPE
2836526-2	H	FINE CRIMP HEIGHT ADJUST	PNEUMATIC
3-2836526-2	H	FINE CRIMP HEIGHT ADJUST	DOUBLE ACTING PNEUMATIC WITH SENSORS
7-2836526-2	H	PNEUMATIC AND CRIMP TOOLING KIT	PNEUMATIC
7-2836526-7	D	CRIMP TOOLING KIT	-

ATLANTIC VERSION TERMINATOR INTERFACE ADAPTER



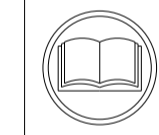
APPLICATOR DATA		
CRIMP	SIZE	TYPE
WIRE	3.61 mm [.142]	○
INSUL	6.86 mm [.270]	○

APPLICATOR INSTRUCTIONS  
408-35042

TERMINAL DATA: TE TERMINAL		TE CRIMP SPECIFICATION	
TERMINAL NAME: OUTER FERRULE, 180 DEGREE, SEALED FAKRA			
WIRE STRIP LENGTH		INSULATION DIAMETER RANGE	$\varnothing 3.40-3.70$ mm [.134-.146 IN]
TERMINAL APPLICATION SPECIFICATION	114-32145		

TE TERMINAL	TE TERMINAL	TE SEAL	TE SEAL	CABLE DIAMETER
2272633-3		2301641-3	963245-1	$\varnothing 3.40-3.70$ mm

WIRE SIZE	CRIMP HEIGHT mm [INCH]	CRIMP HEIGHT REFERENCE SETTING
RTK-031		7.5
DACAR 302		7.9



- ▲ RECOMMENDED SPARE PARTS
- ▲ REFER TO SUPPLIED INSTRUCTION SHEET FOR CLEANING, LUBRICATION AND STORAGE OF APPLICATOR.
- ▲ APPLY PART NUMBER 1-23419-5 LOCTITE TO THREADS OF ITEMS 180. APPLY PART NUMBER 2-23419-6 LOCTITE TO THREADS OF ITEM 242.
- ▲ CRIMP HEIGHT REFERENCE SETTING WAS THE SETTING USED WHEN THE APPLICATOR WAS QUALIFIED AT THE FACTORY. ADJUSTMENT MAY BE NECESSARY WHEN RUNNING APPLICATOR IN THE FIELD.
- ▲ APPLY TORQ-SEAL IN ALLEN SOCKET TO FILL HOLE AFTER FLAT HD HAS BEEN ADJUSTED TO CORRECT HEIGHT AT QUALIFICATION. APPLY #1-23419-5 LOC-TITE TO THREADS.
- ▲ TERMINAL PITCH NOT COMPATIBLE WITH MECHANICAL FEED.
- ▲ SEE APPLICATION SPECIFICATION 114-32145 FOR SOLDER DIAMETER TO VERIFY BRAID CRIMP HEIGHT.
- ▲ SEE APPLICATION SPECIFICATION 114-32145 FOR RECOMMENDED STRIP LENGTH DIMENSIONS.
- ▲ MUST FEED OFF OF SLOT.
- 10. UNLESS SPECIFIED OTHERWISE TORQUE VALUES SHALL BE USED PER DOCUMENT, 101-35000.
- ▲ THIS APPLICATOR IS EQUIPPED WITH THE DOUBLE ACTING FEED WITH SENSORS AND IS APPLICATION SPECIFIC. IT DOES NOT REQUIRE ITEMS 49 & 248.

LOC	DIST	REVISIONS					
		P	LTN	DESCRIPTION	DATE	OWN	APVD
A	66	F		ECR-22-141527	07JUN2022	FZ	TE
		G		ECR-22-142821	17JUN2022	TB	JAH
		G1		ECR-23-165437	06FEB2023	FZ	JAH
		H		ECR-23-169570	17MAR2023	FZ	JAH

-	-	1	-	2844950-1	AIR FEED MODULE	290
-	2	2	2	2168083-1	SCR, SKT HD CAP, RoHS, M3 X 8.0	269
-	1	1	1	1-1633782-4	FENCE	267
-	1	1	1	1-455888-0	SPACER, CRIMPER	261
-	1	1	1	1803078-2	SPACER, PRECISION	259
▲	-	1	-	2119641-1	FEED CAM, AIR FEED	248
-	1	1	1	2119082-5	CAM, SNAIL, INSULATION ADJUSTMENT	244
-	1	1	1	2079764-1	WASHER, WAVE SPRING, CREST-TO-CREST	243
▲	-	1	1	2119083-1	RETAINER, INSULATION DIAL	242
-	1	1	1	7-18023-7	SCR, SKT HD CAP M3 X 4.0	241
-	1	-	1	2844940-1	AIR FEED MODULE	238
▲	-	1	1	2079383-1	SCR, BHSC, RoHS (M3 X 8)	180
-	1	1	1	6-993111-6	PIN, SLOTTED SPRING 3.0 X 14.0	177
-	1	1	1	8-22280-7	SPRING, COMPRESSION	176
-	1	1	1	1752353-2	GUIDE PIN, HOLDDOWN	175
-	1	1	1	1901680-2	GUIDE PIN, HOLDDOWN	174
-	REF	REF	REF	994970-2	COUNTER, MAGNETIC	164
-	1	1	1	1-22281-8	SPRING, COMPRESSION	121
-	1	1	1	2844908-1	SCREW, LOCKING	99
-	1	1	1	2844907-1	POST, LOCKING	98
-	1	1	1	1-690438-0	FRONT STRIP GUIDE	96
-	2	2	2	2168083-1	SCR, SKT HD CAP, RoHS, M3 X 8.0	95
-	1	1	1	2168083-6	SCR, SKT HD CAP, RoHS, M5 X 65	93
-	1	1	1	318563-1	GUARD, FRONT CHIP	89
-	1	1	1	1-455888-0	SPACER, CRIMPER	82
-	1	1	1	1803607-3	DOCUMENTATION PACKAGE	71
-	1	1	1	2119791-9	DEPRESSOR, WIRE	70
-	1	1	1	2119943-1	WASHER, SPACER	69
-	1	1	1	2119740-1	TAG IDENTIFICATION	67
-	2	2	2	2168078-1	SCREW, DRIVE, RH, RoHS, 2 x .188	66
-	2	2	2	2-18032-5	SCR, SET, FLT PNT, M5 X 20.0	61
-	1	1	1	2168083-2	SCR, SKT HD CAP, RoHS, M4 X 8.0	60
-	1	1	1	5-18022-5	SCR, HEX HD CAP, M4 X 6.0	59
-	1	1	1	5018030-1	NUT, HEX, REG, RoHS, M3	58
▲	-	1	1	1-2168083-3	SCR, SKT HD CAP, RoHS, M3 X 16	57
▲	-	1	1	1338685-3	PAWL, FEED	56
-	4	4	4	2168083-3	SCR, SKT HD CAP, RoHS, M4 X 12.0	54
-	1	1	1	1-5018030-0	NUT, HEX, REG, RoHS, M3.5	52
-	1	1	1	1803816-1	HOLDDOWN, TERMINAL SPECIAL	51
▲	-	1	-	18023-9	SCR, SKT HD CAP M4 X 6.0	49
-	1	1	1	1-1803583-7	APPLICATOR BASIC ASSEMBLY, SF	46
-	1	1	1	1803515-2	RAM ASSEMBLY, SF ATLANTIC	44
-	1	1	1	1803602-2	SCR, BHSC, RoHS (M8 X 40)	41
-	1	1	1	1803746-2	ADJUSTABLE TERMINAL SUPPORT	34
-	2	2	2	1-2079383-3	SCR, BHSC, RoHS (M4 X 25)	33
-	2	2	2	3-2844962-5	SPACER, CYLINDRICAL, STRIP GUIDE	30
-	1	1	1	2-2844938-4	PLATE, STRIP GUIDE	29
-	1	1	1	1-455888-0	SPACER, CRIMPER	28
-	2	2	2	22283-1	SPRING, COMPRESSION	27
-	1	1	1	356835-1	LEVER, DRAG RELEASE	26
-	1	1	1	240792-1	DRAG, TERMINAL	25
-	1	1	1	1320928-2	STRIP GUIDE	24
-	1	1	1	980371-4	SCR, SKT HD SHLDR 5.0 DIA X 6.0	23
▲	-	1	1	2119806-1	INSERT, SHEAR	13
-	1	1	1	3-22280-3	SPRING, COMPRESSION	12
-	1	1	1	1-18023-1	SCR, SKT HD CAP M4 X 10.0	11
▲	-	1	1	2-2119805-3	SHEAR HOLDER, FRONT	10
▲	-	1	1	1803808-1	FLOATING SHEAR, FRONT SPECIAL	9
▲	1	2	1	1803813-3	ANVIL, COMBINATION SPECIAL	8
-	-	-	-	-	-	7
-	-	-	-	-	-	6
-	1	1	1	2-1803080-0	DEPRESSOR, SHEAR	5
-	1	1	1	2-238011-1	BLOCK, CRIMPER SPACER	4
▲	1	2	1	9-2119784-9	CRIMPER, INSULATION O PREMIUM	3
-	1	1	1	455888-2	SPACER, CRIMPER	2
▲	1	2	1	3-1633723-1	CRIMPER, WIRE O	1

\*WARNING  
ON INSTALLATION, SET WIRE DISC TO CRIMP HEIGHT REFERENCE SETTING FOR LARGEST WIRE SIZE. CRIMP HEIGHT REFERENCE SETTINGS GREATER THAN THE VALUE SHOWN MAY CAUSE DAMAGE TO THE CRIMP TOOLING, REFER TO THE INSTRUCTION SHEET FOR PROPER SETUP AND ADJUSTMENTS.

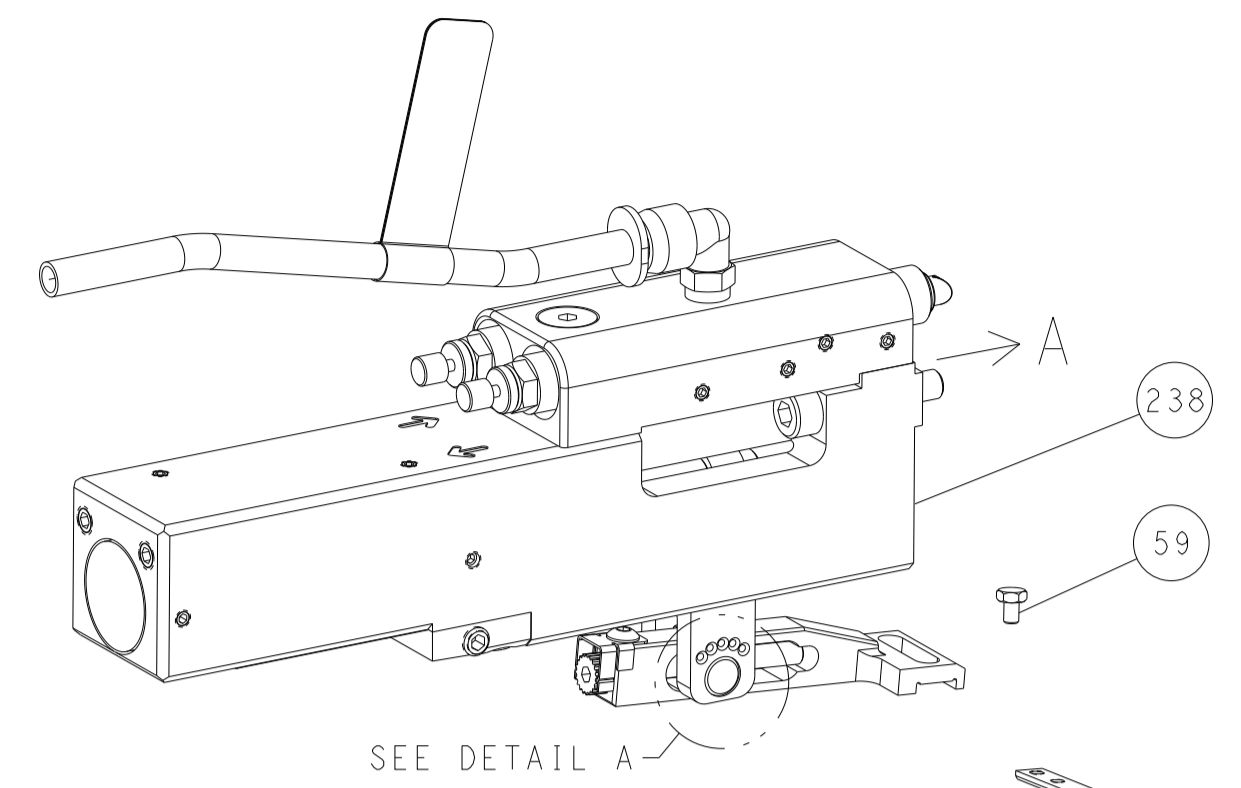
ATLANTIC VERSION  
Shown on sheets 1 of 4 & 2 of 4  
(Pacific version shown on sheets 3 of 4 & 4 of 4)

DIMENSIONS:		TOLERANCES UNLESS OTHERWISE SPECIFIED:		OWN: M. HERR 08NOV2016		CHK: T. ELBIN 08NOV2016		APVD: T. ELBIN 08NOV2016		NAME: Ocean Side Feed Applicator	
mm		0 PLC ±		SIZE: A1		CAGE CODE: 00779		DRAWING NO: 2836526		RESTRICTED TO: -	
MATERIAL: -		FINISH: -		WEIGHT: -		SCALE: 1:2		SHEET: 1 of 4		REV: H	

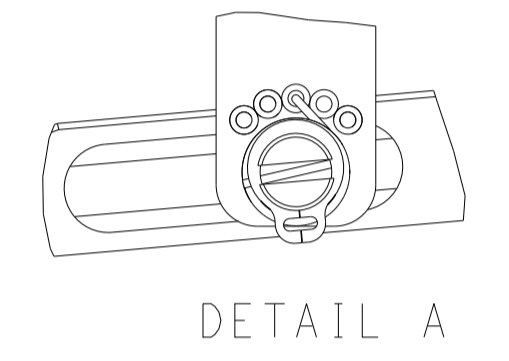
Customer Accessible Production Drawing

LOC	DIST	REVISIONS					
A	66	P	LTN	DESCRIPTION	DATE	OWN	APVD
		-		SEE SHEET 1	-	-	-

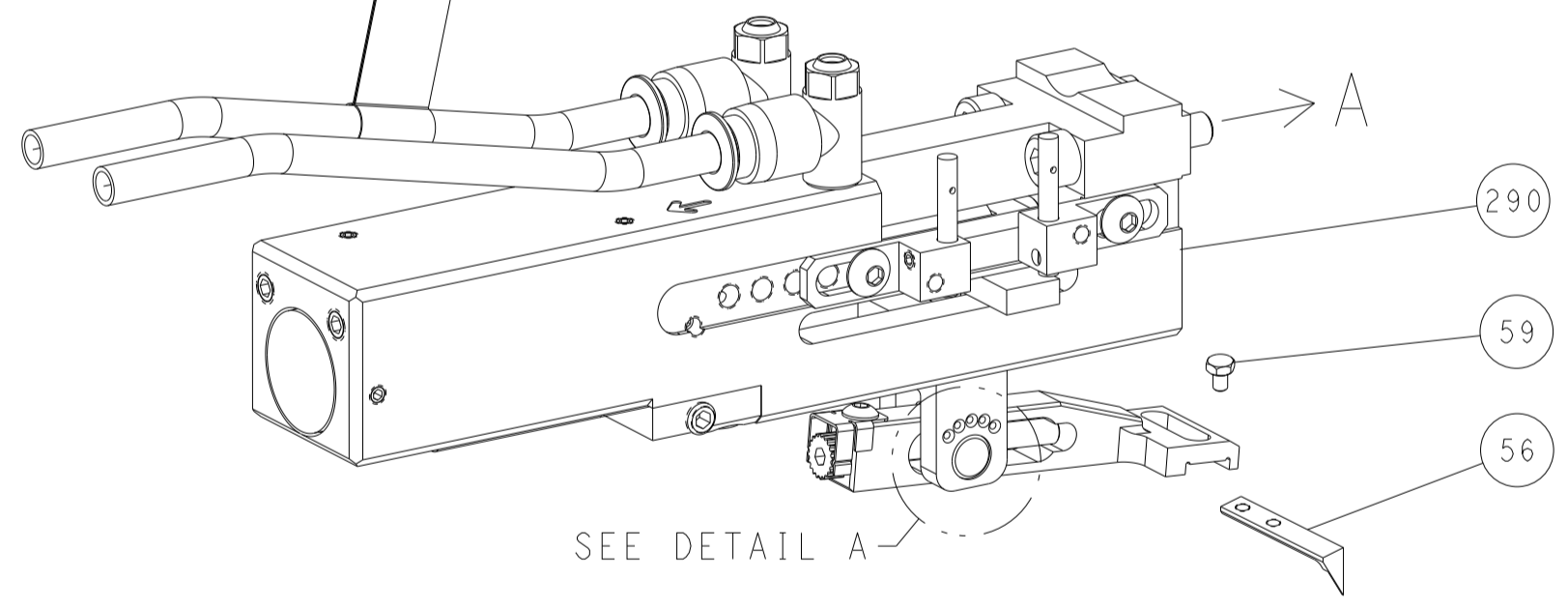
# FEED TYPE PNEUMATIC



SEE DETAIL A  
 FEED SPRING SETTING POSITION  
 (SHOWN FROM REAR SIDE)

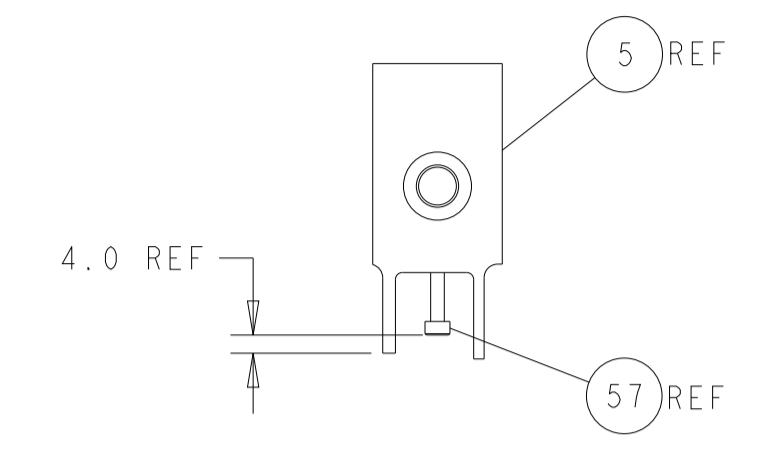
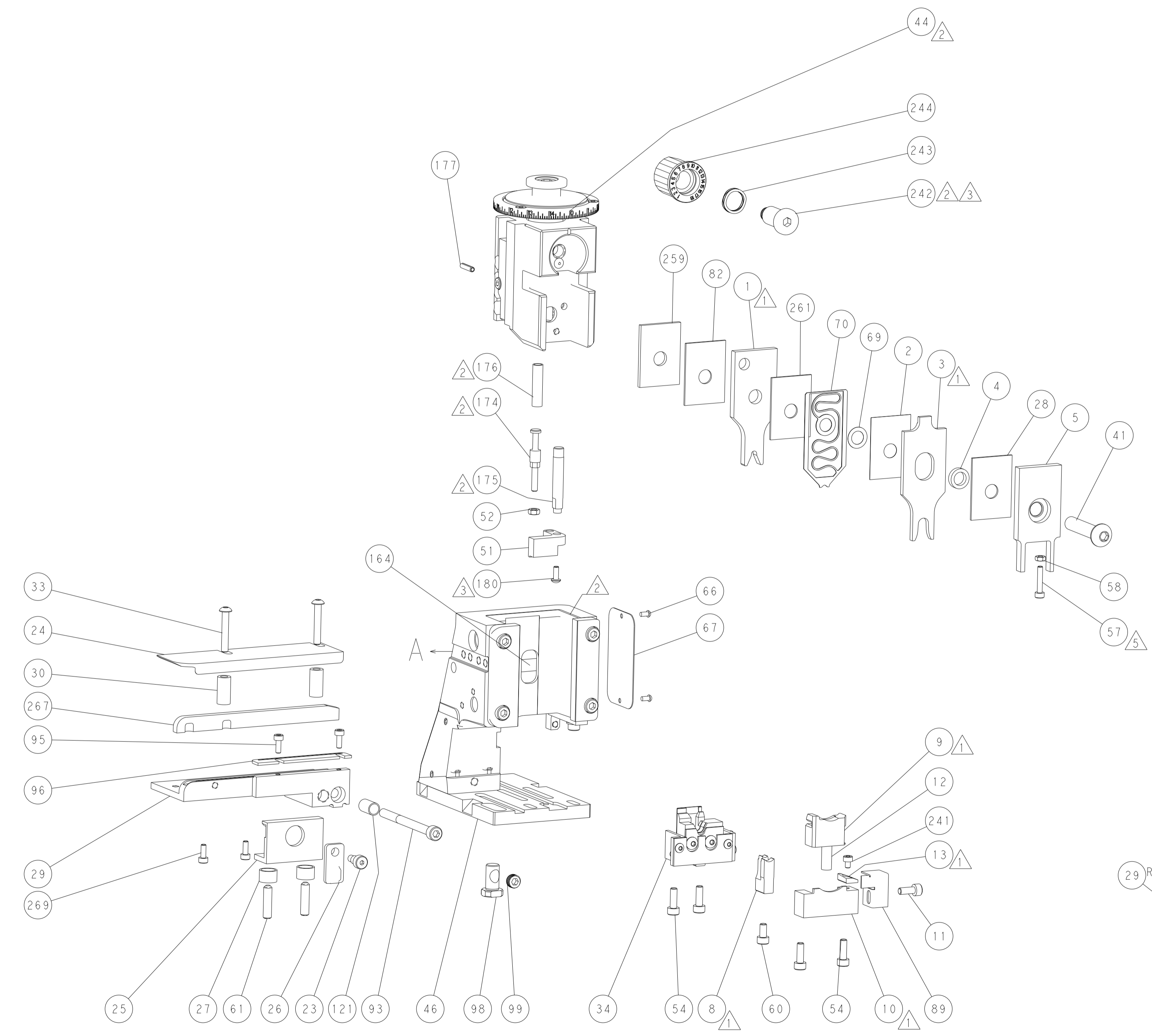
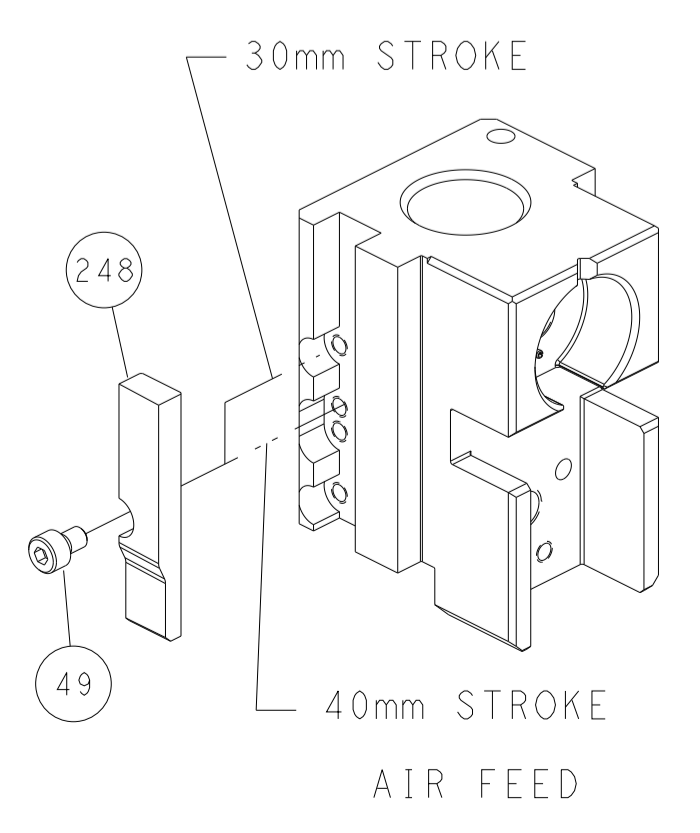


# DOUBLE ACTING PNEUMATIC WITH SENSORS

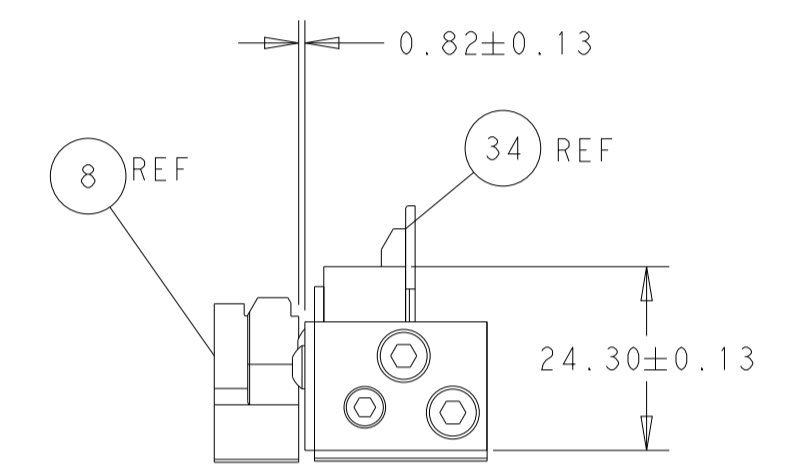


SEE DETAIL A

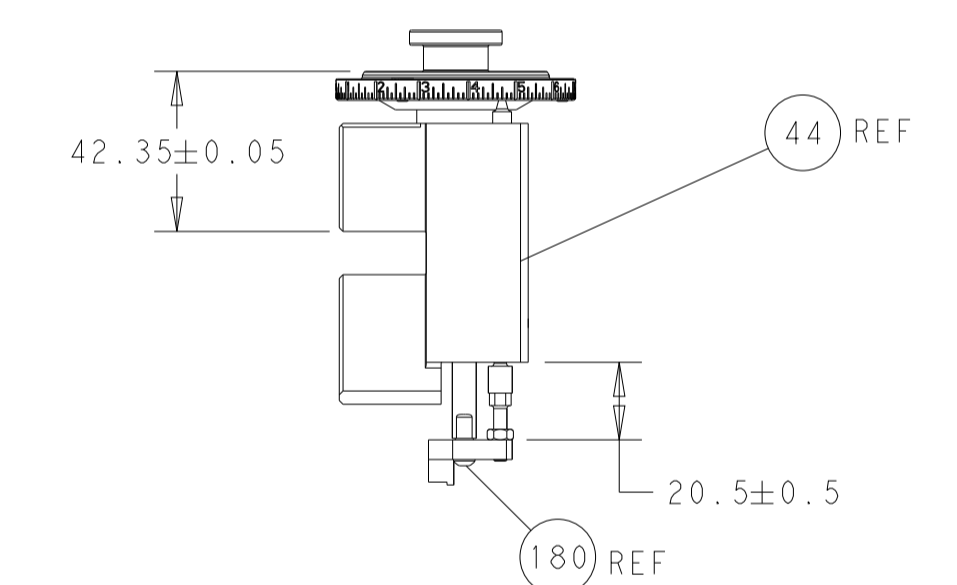
# CAM POSITION



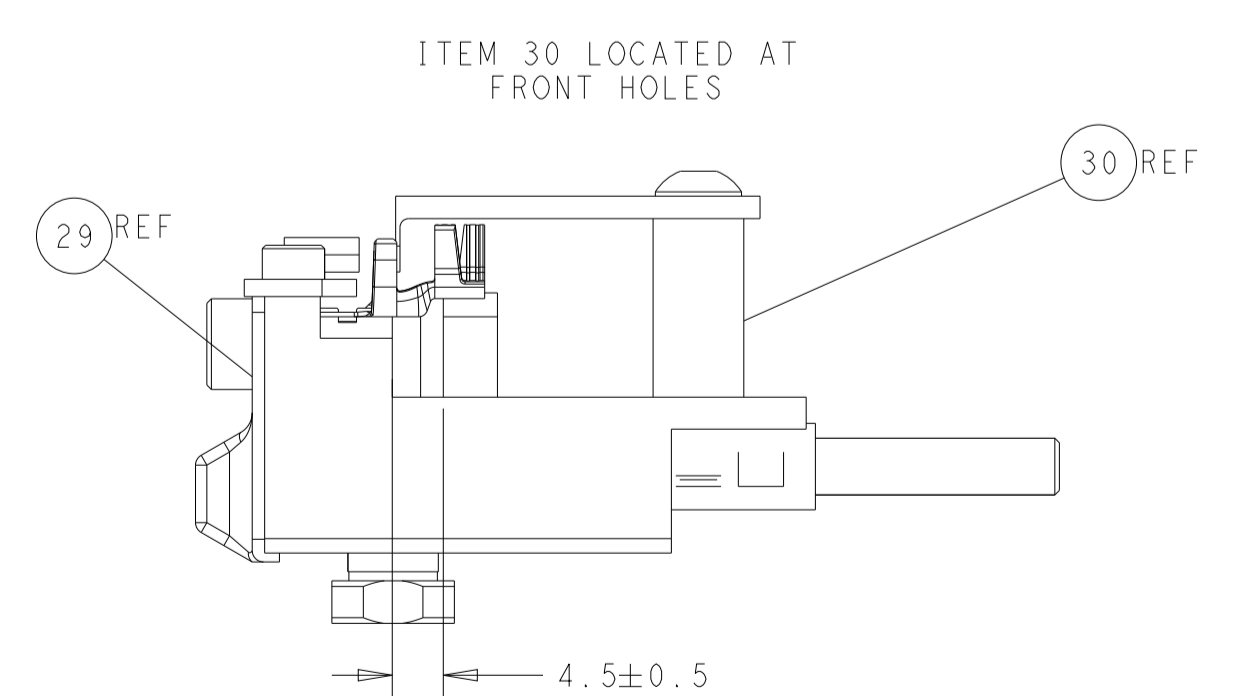
SHEAR DEPRESSOR DETAIL



CABLE SUPPORT HOLDER SET-UP LOCATION



RAM AND HOLDDOWN SET-UP



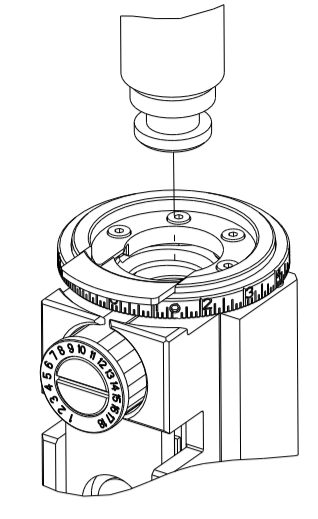
FEED TRACK POSITION  
GUIDE BY INSULATION BARREL

**ATLANTIC VERSION**  
 Shown on sheets 1 of 4 & 2 of 4  
 (Pacific version shown on sheets 3 of 4 & 4 of 4)

<small>THIS DRAWING IS UNPUBLISHED. RELEASED FOR PUBLICATION 2016. COPYRIGHT 2016 BY TYCO ELECTRONICS CORPORATION. ALL RIGHTS RESERVED.</small>		OWN: M. HERR 08NOV2016 CHK: T. ELBIN 08NOV2016 APVD: T. ELBIN 08NOV2016	NAME: Ocean Side Feed Applicator SIZE: A1 CAGE CODE: 00779 DRAWING NO: 2836526	TE Connectivity Harrisburg, PA 17105-3608
DIMENSIONS: mm TOLERANCES UNLESS OTHERWISE SPECIFIED: 0 PLC ± 1 PLC ± 2 PLC ± 3 PLC ± 4 PLC ± ANGLES ± MATERIAL: - FINISH: -	TOLERANCES UNLESS OTHERWISE SPECIFIED: 0 PLC ± 1 PLC ± 2 PLC ± 3 PLC ± 4 PLC ± ANGLES ± MATERIAL: - FINISH: -	APPLICATION SPEC: - WEIGHT: - SCALE: 1:2	SHEET 2 OF 4 REV H	RESTRICTED TO: -

PART NUMBER	REVISION	DESCRIPTION	FEED TYPE
2-2836526-2	H	FINE CRIMP HEIGHT ADJUST	PNEUMATIC
4-2836526-2	H	FINE CRIMP HEIGHT ADJUST	DOUBLE ACTING PNEUMATIC WITH SENSORS
7-2836526-7	D	CRIMP TOOLING KIT	-

PACIFIC VERSION TERMINATOR INTERFACE ADAPTER



APPLICATOR DATA		
CRIMP	SIZE	TYPE
WIRE	3.61 mm [.142]	Ø
INSUL	6.86 mm [.270]	Ø
APPLICATOR INSTRUCTIONS 408-35042		

TERMINAL DATA: TE TERMINAL		TE CRIMP SPECIFICATION	
TERMINAL NAME: OUTER FERRULE, 180 DEGREE, SEALED FAKRA			
WIRE STRIP LENGTH		INSULATION DIAMETER RANGE	
TERMINAL APPLICATION SPECIFICATION		114-32145	

TE TERMINAL	TE SEAL	CABLE DIAMETER
2272633-3	2301641-3	Ø 3.40-3.70mm

WIRE SIZE	CRIMP HEIGHT mm [INCH]	CRIMP HEIGHT REFERENCE SETTING
RTK-031	3.47+/-0.03 [.137+/-0.001]	7.5
DACAR 302	3.43+/-0.03 [.135+/-0.001]	7.9

- 1 RECOMMENDED SPARE PARTS
- 2 REFER TO SUPPLIED INSTRUCTION SHEET FOR CLEANING, LUBRICATION AND STORAGE OF APPLICATOR.
- 3 APPLY PART NUMBER 1-23419-5 LOCTITE TO THREADS OF ITEMS 180. APPLY PART NUMBER 2-23419-6 LOCTITE TO THREADS OF ITEM 242.
- 4 CRIMP HEIGHT REFERENCE SETTING WAS THE SETTING USED WHEN THE APPLICATOR WAS QUALIFIED AT THE FACTORY. ADJUSTMENT MAY BE NECESSARY WHEN RUNNING APPLICATOR IN THE FIELD.
- 5 APPLY TORQ-SEAL IN ALLEN SOCKET TO FILL HOLE AFTER FLAT HD HAS BEEN ADJUSTED TO CORRECT HEIGHT AT QUALIFICATION. APPLY #1-23419-5 LOC-TITE TO THREADS.
- 6 TERMINAL PITCH NOT COMPATIBLE WITH MECHANICAL FEED.
- 7 SEE APPLICATION SPECIFICATION 114-32145 FOR SOLDER DIAMETER TO VERIFY BRAID CRIMP HEIGHT.
- 8 SEE APPLICATION SPECIFICATION 114-32145 FOR RECOMMENDED STRIP LENGTH DIMENSIONS.
- 9 MUST FEED OFF OF SLOT.
- 10. UNLESS SPECIFIED OTHERWISE TORQUE VALUES SHALL BE USED PER DOCUMENT, 101-35000.
- 11 THIS APPLICATOR IS EQUIPPED WITH THE DOUBLE ACTING FEED WITH SENSORS AND IS APPLICATION SPECIFIC. IT DOES NOT REQUIRE ITEMS 49 & 151.

LOC		DIST		REVISIONS			
A	66	P	LTN	DESCRIPTION	DATE	OWN	APVD
-	1	-	-	2844950-1	AIR FEED MODULE		290
-	2	2	-	2168083-1	SCR, SKT HD CAP, RoHS, M3 X 8.0		269
-	1	1	-	1-1633782-4	FENCE		267
-	1	1	-	1-455888-0	SPACER, CRIMPER		261
-	1	1	-	1803078-2	SPACER, PRECISION		259
-	1	1	-	2119082-5	CAM, SNAIL, INSULATION ADJUSTMENT		244
-	1	1	-	2079764-1	WASHER, WAVE SPRING, CREST-TO-CREST		243
3	-	1	1	2119083-1	RETAINER, INSULATION DIAL		242
-	1	1	-	7-18023-7	SCR, SKT HD CAP M3 X 4.0		241
-	-	1	-	2844940-1	AIR FEED MODULE		238
3	-	1	1	2079383-1	SCR, BHSC, RoHS (M3 X 8)		180
-	1	1	-	6-993111-6	PIN, SLOTTED SPRING 3.0 X 14.0		177
-	1	1	-	8-22280-7	SPRING, COMPRESSION		176
-	1	1	-	1752353-2	GUIDE PIN,HOLDDOWN		175
-	1	1	-	1901680-2	GUIDE PIN,HOLDDOWN		174
-	REF	REF	-	994970-2	COUNTER, MAGNETIC		164
1	-	-	1	2119641-2	FEED CAM, AIR FEED		151
-	1	1	-	2168083-8	SCR, SKT HD CAP, RoHS, M4 X 16		144
-	4	4	-	2168083-9	SCR, SKT HD CAP, RoHS, M4 X 20		143
-	1	1	-	1-1803583-8	APPLICATOR BASIC ASSEMBLY, SF		141
-	1	1	-	1803516-2	RAM ASSEMBLY, SF PACIFIC		140
-	1	1	-	1-22281-8	SPRING, COMPRESSION		121
-	1	1	-	2844908-1	SCREW, LOCKING		99
-	1	1	-	2844907-1	POST, LOCKING		98
-	1	1	-	1-690438-0	FRONT STRIP GUIDE		96
-	2	2	-	2168083-1	SCR, SKT HD CAP, RoHS, M3 X 8.0		95
-	1	1	-	2168083-6	SCR, SKT HD CAP, RoHS, M5 X 65		93
-	1	1	-	318563-1	GUARD, FRONT CHIP		89
-	1	1	-	1-455888-0	SPACER, CRIMPER		82
-	1	1	-	1803607-3	DOCUMENTATION PACKAGE		71
-	1	1	-	2119791-9	DEPRESSOR, WIRE		70
-	1	1	-	2119943-1	WASHER, SPACER		69
-	1	1	-	2119740-1	TAG, IDENTIFICATION		67
-	2	2	-	2168078-1	SCREW, DRIVE, RH, RoHS, 2 x .188		66
-	2	2	-	2-18032-5	SCR, SET, FLT PNT, M5 X 20.0		61
-	1	1	-	5-18022-5	SCR, HEX HD CAP, M4 X 6.0		59
-	1	1	-	5018030-1	NUT, HEX, REG, RoHS, M3		58
5	-	1	1	1-2168083-3	SCR, SKT HD CAP, RoHS, M3 X 16		57
9	-	1	1	1338685-3	PAWL, FEED		56
-	1	1	-	1-5018030-0	NUT, HEX, REG, RoHS, M3.5		52
-	1	1	-	1803816-1	HOLDDOWN, TERMINAL SPECIAL		51
1	-	-	1	18023-9	SCR, SKT HD CAP M4 X 6.0		49
-	1	1	-	1803602-2	SCR, BHSC, RoHS (M8 X 40)		41
-	1	1	-	1803746-2	ADJUSTABLE TERMINAL SUPPORT		34
-	2	2	-	1-2079383-3	SCR, BHSC, RoHS (M4 X 25)		33
-	2	2	-	3-2844962-5	SPACER, CYLINDRICAL, STRIP GUIDE		30
-	1	1	-	2-2844938-4	PLATE, STRIP GUIDE		29
-	1	1	-	1-455888-0	SPACER, CRIMPER		28
-	2	2	-	22283-1	SPRING, COMPRESSION		27
-	1	1	-	356835-1	LEVER, DRAG RELEASE		26
-	1	1	-	240792-1	DRAG, TERMINAL		25
-	1	1	-	1320928-2	STRIP GUIDE		24
-	1	1	-	980371-4	SCR, SKT HD SHLDR 5.0 DIA X 6.0		23
1	-	1	1	2119806-1	INSERT, SHEAR		13
-	1	1	-	3-22280-3	SPRING, COMPRESSION		12
-	1	1	-	1-18023-1	SCR, SKT HD CAP M4 X 10.0		11
1	-	1	1	2-2119805-3	SHEAR HOLDER, FRONT		10
1	-	1	1	1803808-1	FLOATING SHEAR, FRONT SPECIAL		9
1	1	1	1	1803813-3	ANVIL, COMBINATION SPECIAL		8
-	-	-	-	-	-		7
-	-	-	-	-	-		6
-	1	1	-	2-1803080-0	DEPRESSOR, SHEAR		5
-	1	1	-	2-238011-1	BLOCK, CRIMPER SPACER		4
1	1	1	1	9-2119784-9	CRIMPER, INSULATION O PREMIUM		3
-	1	1	-	455888-2	SPACER, CRIMPER		2
1	1	1	1	3-1633723-1	CRIMPER, WIRE O		1

**\*WARNING**  
ON INSTALLATION, SET WIRE DISC TO CRIMP HEIGHT REFERENCE SETTING FOR LARGEST WIRE SIZE. CRIMP HEIGHT REFERENCE SETTINGS GREATER THAN THE VALUE SHOWN MAY CAUSE DAMAGE TO THE CRIMP TOOLING, REFER TO THE INSTRUCTION SHEET FOR PROPER SETUP AND ADJUSTMENTS.

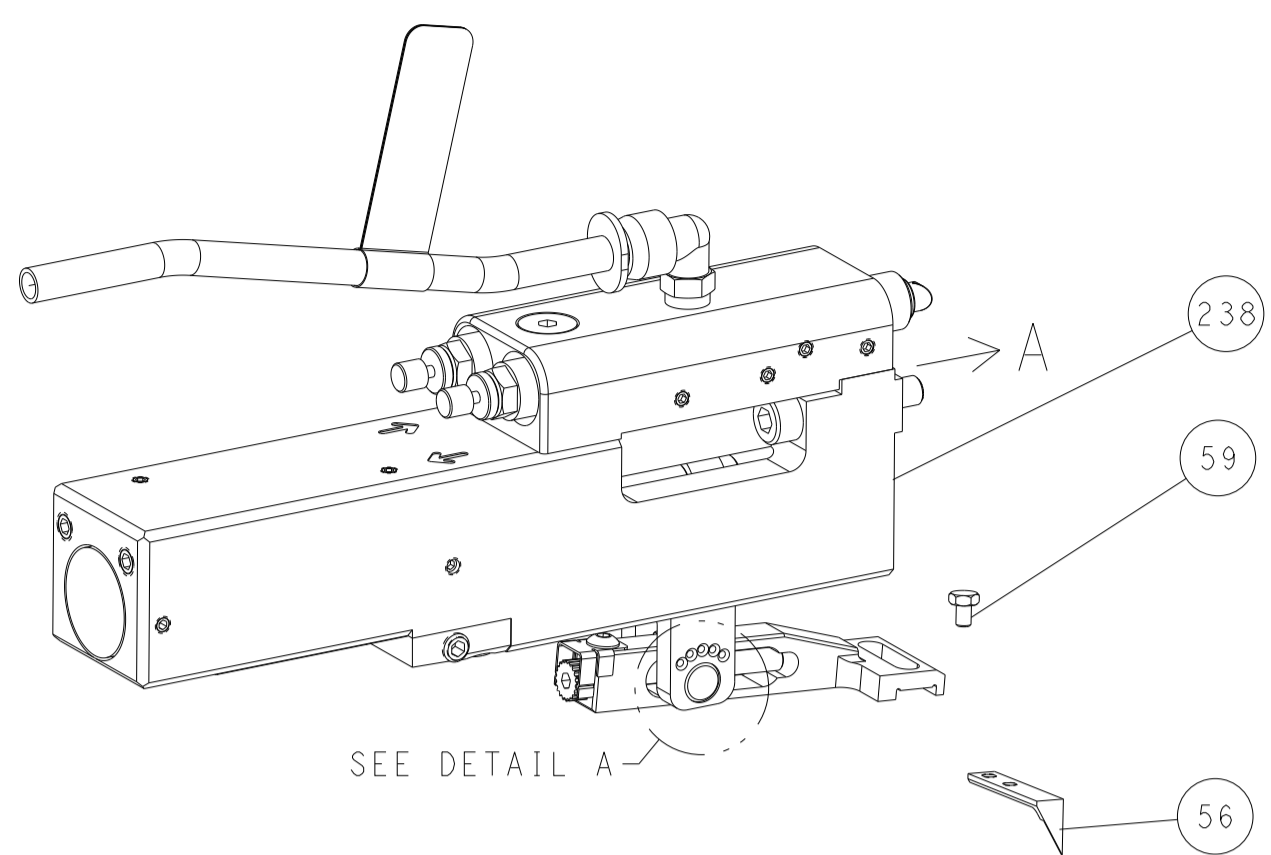
PACIFIC VERSION  
Shown on sheets 3 of 4 & 4 of 4  
(Atlantic version shown on sheets 1 of 4 & 2 of 4)

DIMENSIONS:		TOLERANCES UNLESS OTHERWISE SPECIFIED:		OWN: M. HERR 08NOV2016		CHK: T. ELBIN 08NOV2016		APVD: T. ELBIN 08NOV2016		NAME: Ocean Side Feed Applicator	
mm	0 PLC ±	1 PLC ±	2 PLC ±	3 PLC ±	4 PLC ±	ANGLES ±	FINISH	SIZE: A1	CAGE CODE: 00779	DRAWING NO: C=2836526	RESTRICTED TO: -
MATERIAL: -		FINISH: -		WEIGHT: -		SCALE: 1:2		SHEET: 3 OF 4		REV: H	

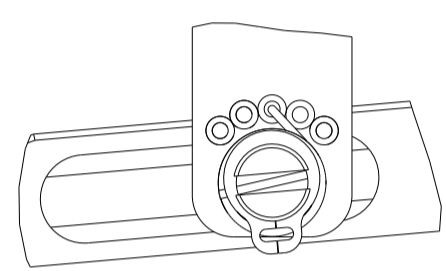
Customer Accessible Production Drawing

LOC	DIST	REVISIONS					
A	66	P	LYN	DESCRIPTION	DATE	OWN	APVD
		-		SEE SHEET 1			

# FEED TYPE PNEUMATIC

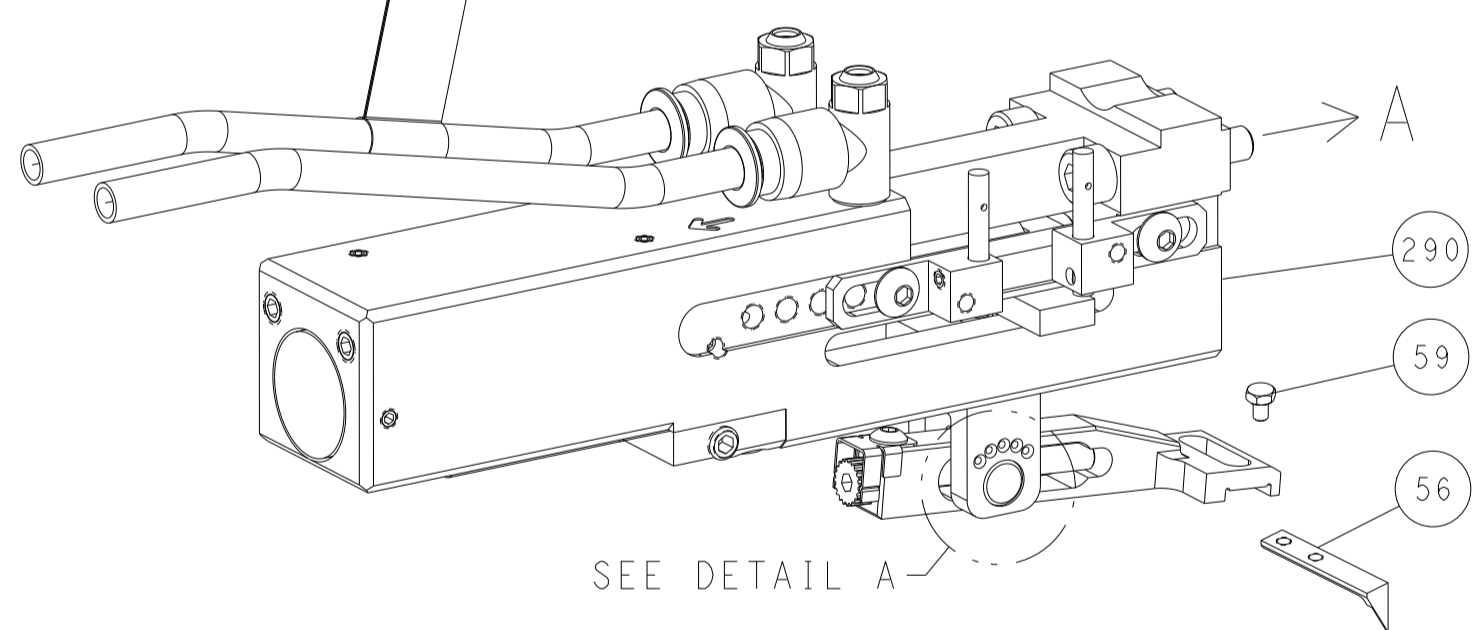


FEED SPRING SETTING POSITION  
(SHOWN FROM REAR SIDE)

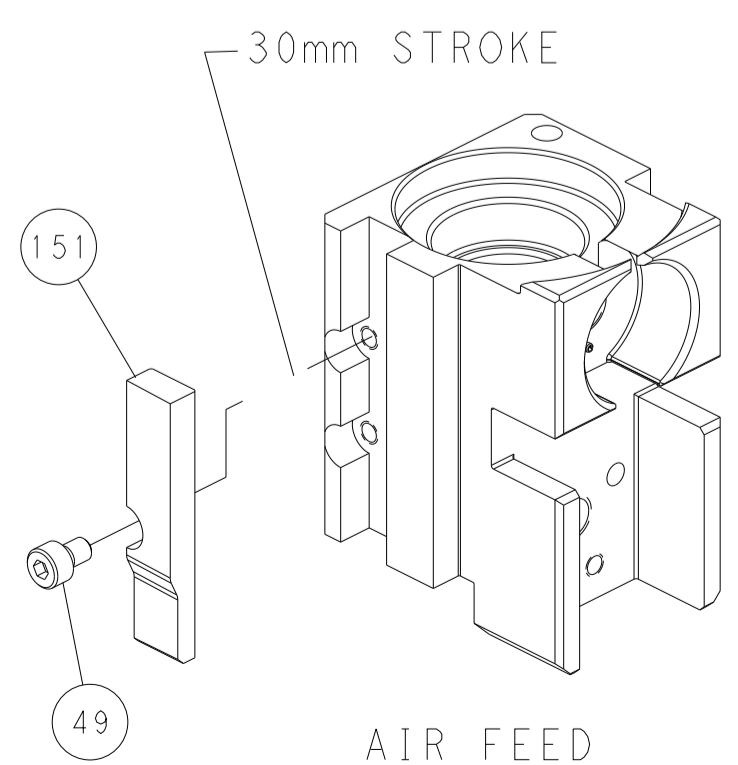


DETAIL A

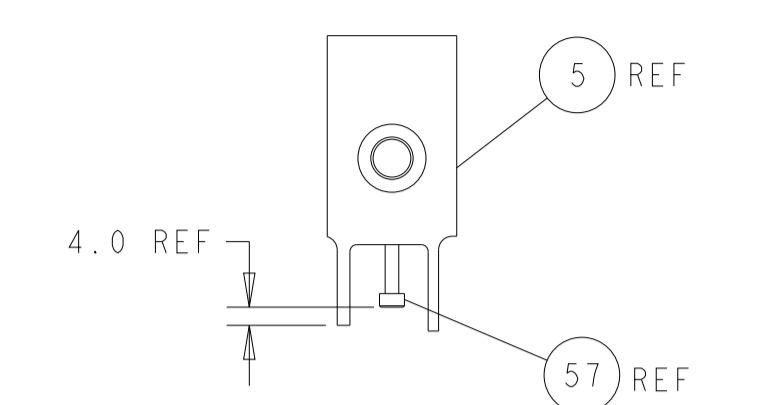
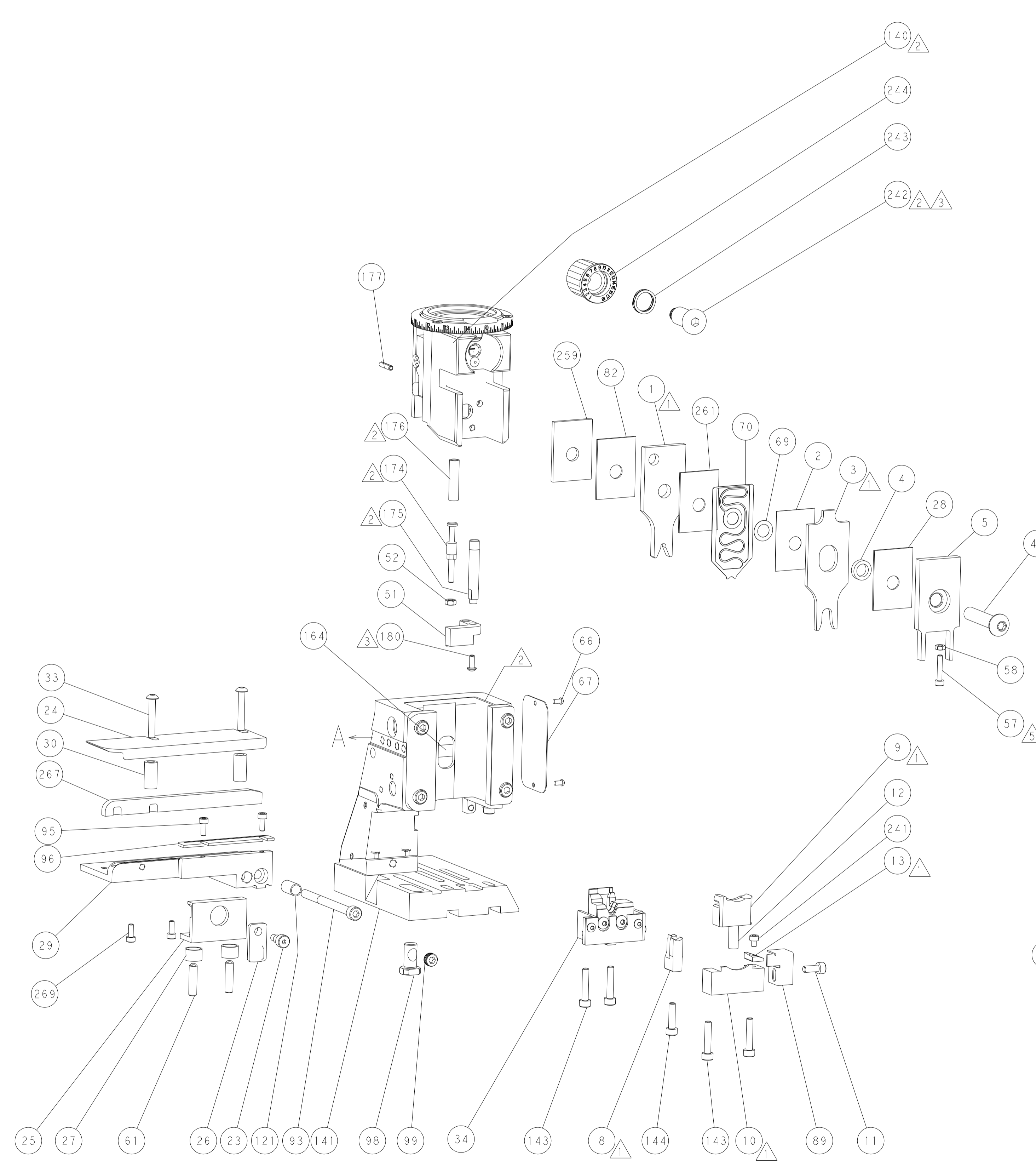
# DOUBLE ACTING PNEUMATIC WITH SENSORS



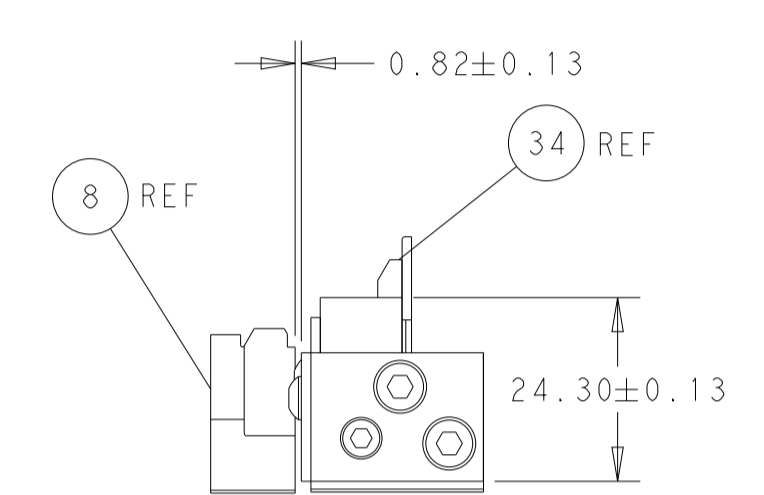
# CAM POSITION



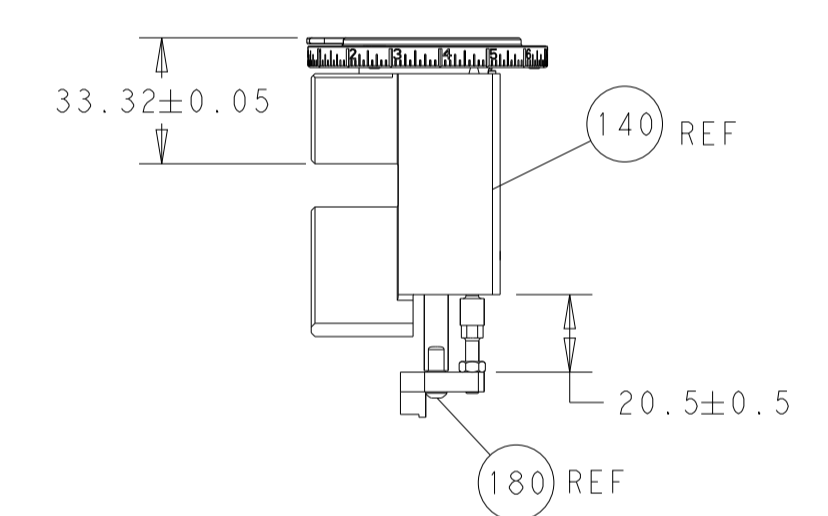
AIR FEED



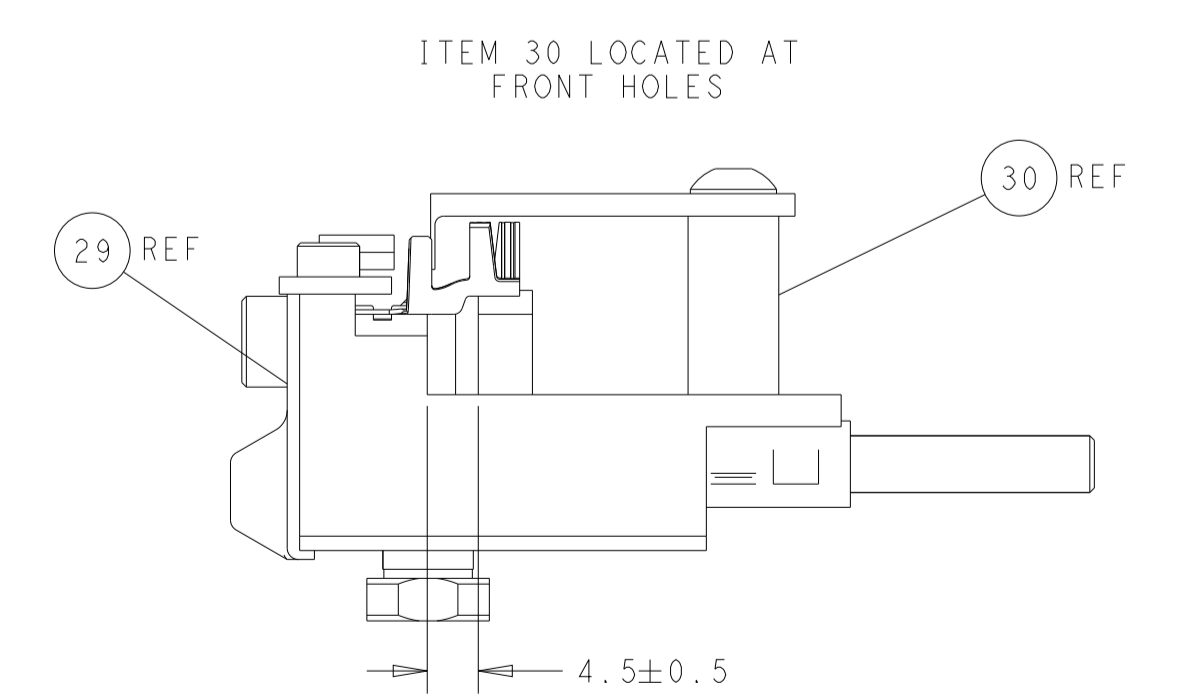
SHEAR DEPRESSOR DETAIL



CABLE SUPPORT HOLDER SET-UP LOCATION



RAM AND HOLDDOWN SET-UP



FEED TRACK POSITION GUIDE BY INSULATION BARREL

**PACIFIC VERSION**  
 Shown on sheets 3 of 4 & 4 of 4  
 (Atlantic version shown on sheets 1 of 4 & 2 of 4)

DIMENSIONS:		TOLERANCES UNLESS OTHERWISE SPECIFIED:		OWN: M. HERR 08NOV2016		TE Connectivity	
mm	0 PLC ±	1 PLC ±	2 PLC ±	3 PLC ±	4 PLC ±	Harrisburg, PA 17105-3608	
	ANGLES	FINISH		CHK: T. ELBIN 08NOV2016	NAME: T. ELBIN 08NOV2016	Ocean Side Feed Applicator	
MATERIAL:				APVD: T. ELBIN 08NOV2016	PRODUCT SPEC:	SIZE: A1	CAGE CODE: 00779
				APPLICATION SPEC:	RESTRICTED TO:	Customer Accessible Production Drawing	
				WEIGHT:	SCALE: 1:2	SHEET: 4	OF 4 REV: H