

ATLANTIC VERSION TERMINATOR INTERFACE ADAPTER	PART NUMBER	REVISION	DESCRIPTION	FEED TYPE	
	2836476-1	A	FINE CRIMP HEIGHT ADJUST	MECHANICAL	SUPERSEDED BY 5-2151265-1
	2836476-2	A	FINE CRIMP HEIGHT ADJUST	PNEUMATIC	SUPERSEDED BY 5-2151265-2
	2836476-5	A	FINE CRIMP HEIGHT ADJUST	SERVO LATCH PLATE	OBSOLETE
	2836476-6	A	NON CRIMP HEIGHT ADJUST	SERVO LATCH PLATE	OBSOLETE
	2836476-7	A	FINE CRIMP HEIGHT ADJUST	NONE	OBSOLETE
	7-2836476-7	A	CRIMP TOOLING KIT	-	

APPLICATOR DATA		
CRIMP	SIZE	TYPE
WIRE	1.07 mm [.042]	F
INSUL	1.57 mm [.062]	O

APPLICATOR INSTRUCTIONS 408-10389

TERMINAL DATA: TE TERMINAL		TE CRIMP SPECIFICATION	
TERMINAL NAME: MQS OIN CONTACT			
WIRE STRIP LENGTH		INSULATION DIAMETER RANGE	
3.55-3.85 mm [.140-.152 IN]		Ø0.85-1.20 mm [.033-.047 IN]	
TERMINAL APPLICATION SPECIFICATION	114-18021		
TERMINALS APPLIED			
TE TERMINAL	TE TERMINAL	TE TERMINAL	TE TERMINAL
1355717-1	1355717-5	1355719-1	1355719-2

WIRE SIZE	CRIMP HEIGHT mm [INCH]	CRIMP HEIGHT REFERENCE SETTING
0.22mm2	0.77 +/- 0.03 [.030 +/- .001]	5.8
0.20mm2	0.75 +/- 0.03 [.030 +/- .001]	5.9
0.14mm2	0.71 +/- 0.03 [.028 +/- .001]	6.6
0.08mm2	0.64 +/- 0.03 [.025 +/- .001]	7.4

- 1. RECOMMENDED SPARE PARTS
- 2. GREASE BEARING SURFACES LIGHTLY
- 3. LUBRICATE DAILY PER THE APPLICATOR INSTRUCTION SHEET SUPPLIED WITH THE APPLICATOR.
- 4. APPLICATOR SPECIFIC DATA TO BE ENTERED INTO BLANK MEMORY CHIP AT ASSEMBLY. SEE BELOW FOR PART NUMBER:  
 MECHANICAL FEED WITH "SMART APPLICATOR" CONVERSION: 8-2836476-4  
 PNEUMATIC FEED WITH "SMART APPLICATOR" CONVERSION: 8-2836476-4  
 SERVO FEED WITH "FINE CRIMP HEIGHT ADJUST": 8-2836476-5  
 SERVO FEED WITH "NON-CRIMP HEIGHT ADJUST": 8-2836476-6
- 5. ADJUSTMENT OF THE STRIPPER MAY BE REQUIRED WHEN MOVING THE APPLICATOR BETWEEN BENCH AND LEADMAKER APPLICATIONS.
- 6. APPLY PART NUMBER 1-23419-5 LOCTITE TO THREADS OF ITEM 62. APPLY PART NUMBER 2-23419-6 LOCTITE TO THREADS OF ITEM 242. FOR -6 ONLY APPLY PART NUMBER 1-23419-5 LOCTITE TO THREADS OF ITEM 37.
- 7. GREASE THREADS, GROOVE AND O-RING ON ITEMS 35 & 252.
- 8. MAGNET, ITEM 166 MUST BE ORIENTED CORRECTLY IN ORDER TO PROPERLY ACTUATE THE COUNTER.
- 9. CRIMP HEIGHT REFERENCE SETTING WAS THE SETTING USED WHEN THE APPLICATOR WAS QUALIFIED AT THE FACTORY. ADJUSTMENT MAY BE NECESSARY WHEN RUNNING APPLICATOR IN THE FIELD.
- 10. SPARE FEED CAM STORAGE LOCATION REFER TO INSTRUCTION SHEET FOR ADDITIONAL INFORMATION.
- 11. TO CONVERT THE APPLICATOR TO A NON-CARRIER CUTTING STYLE, REMOVE ITEM 13 AND ATTACH TO THE LOCATION ON THE BACK SIDE OF THE HOUSING. REFER TO INSTRUCTION SHEET FOR ADDITIONAL INFORMATION.
- 12. WHEN ASSEMBLING A NON CRIMP HEIGHT ADJUST APPLICATOR (-6) USE SHIMS FROM ITEM 260 TO ACHIEVE A NOMINAL SHIM HEIGHT OF 5.03.
- 13. THIS APPLICATOR IS SPECIFIC FOR USE IN A STIPPER SEAL TERMINATING UNIT.

**\*WARNING**  
 ON INSTALLATION, SET WIRE DISC, ITEM 40 TO LARGEST WIRE SIZE SETTING. USE OF SETTINGS BELOW MINIMUM REQUIRED CRIMP HEIGHT SETTING WILL CAUSE DAMAGE TO CRIMP TOOLING.

ITEM NO	DESCRIPTION	ITEM NO
260	APPLICATOR SHIM PACK	260
252	O-RING, .676 ID, .070 DIA. MAT.	252
250	PUSH ROD, AIR FEED	250
249	BUSHING, FLANGED	249
248	FEED CAM, AIR FEED	248
247	DETENT PIN	247
246	SPRING, COMPRESSION	246
245	RAM, AMP STYLE, SIDE FEED, NON-ADJ.	245
244	CAM, SNAIL, INSULATION ADJUSTMENT	244
-77	PART NO	ITEM NO

**ATLANTIC VERSION**  
 Shown on sheets 1 of 4 & 2 of 4  
 (Pacific version shown on sheets 3 of 4 & 4 of 4)

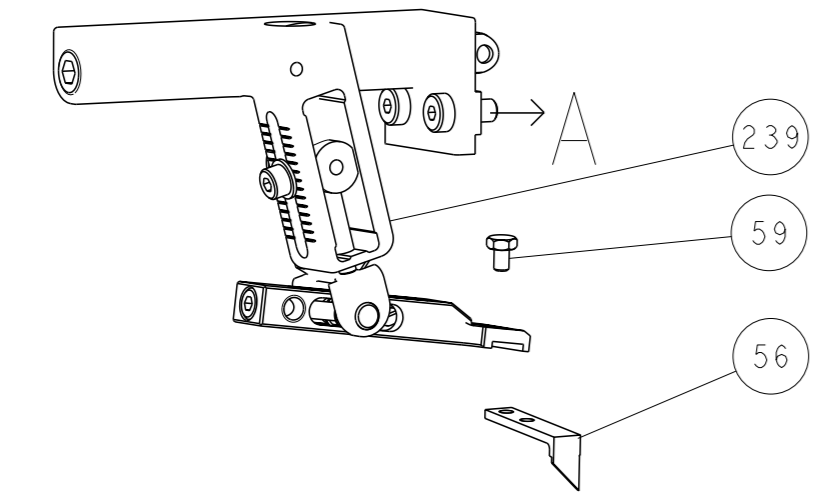
SET UP GAUGE	LOC	DIST	REVISIONS			
2119599-1	A	66	#	DATE	BY	APPV
			A	RELEASED	04NOV2016	MR TE
			A1	ECR-18-009695	21JUN2018	JAH JDG

ITEM NO	DESCRIPTION	DATE	BY	APPV
243	WASHER, WAVE SPRING, CREST-TO-CREST			
242	RETAINER, INSULATION DIAL			
241	SCR, SKT HD CAP M3 X 4.0			
240	SHCS, LOW HEAD, RoHS, M5 X 16			
239	MECHANICAL FEED ASSEMBLY			
238	AIR FEED MODULE			
213	TAG, IDENTIFICATION			
198	SPACER, FEEDER			
182	STRIPPER, SIDE FEED			
181	NUT, HEX, REG, RoHS, M3.5			
180	STANDOFF, HOLD-DOWN			
177	PIN, SLOTTED SPRING 3.0 X 20.0			
176	SPRING, COMPRESSION			
175	GUIDE PIN, HOLDDOWN			
174	GUIDE PIN, HOLDDOWN			
172	RING, RETAIN, EXTERN, 3/16 CRESCENT			
166	MAGNET, RARE EARTH HIGH ENERGY			
164	COUNTER, MAGNETIC			
163	SPRING, FEED FINGER			
137	PIN, RETAIN, GRVD, 3/16 X .854			
136	HOLDER, FEED FINGER, AF			
135	MEMORY CHIP, PROGRAMMED			
133	SERVO FEED LATCH ASM			
120	SPACER, CRIMPER			
117	FEED FINGER ASSEMBLY, SF			
82	SPACER, CRIMPER			
71	DOCUMENTATION PACKAGE			
70	DEPRESSOR, WIRE			
69	WASHER, SPACER			
67	TAG, IDENTIFICATION			
66	SCREW, DRIVE, RH, RoHS, 2 x .188			
63	LIMITER, ADJUSTMENT BOLT			
62	SCR, SET, SOC, CONE PNT, M3 x 4.0			
60	SCR, BHSC, RoHS (M4 X 8)			
59	SCR, HEX HD CAP, M4 X 6.0			
56	PAWL, FEED			
54	SHCS, LOW HEAD, RoHS, M4 X 12			
53	SCR, SKT HD CAP, RoHS, M4 X 12.0			
52	NUT, HEX, REG, RoHS, M3			
51	BUMPER, HOLD DOWN			
50	SPACER, TONKER			
49	SCR, SKT HD CAP M4 X 6.0			
48	FEED CAM, PRE FEED			
47	FEED CAM, POST FEED			
46	APPLICATOR BASIC ASSEMBLY, SF			
44	RAM, AMP STYLE, SIDE FEED			
41	SCR, BHSC, RoHS (M8 X 25)			
40	DISC, NUMBERED FA WIRE ADJUSTMENT			
39	APPLICATOR SHIM PACK			
38	RAM WASHER, PRECISION			
37	FA HEAD, ATLANTIC STYLE			
35	BOLT, ADJUSTMENT			
34	SUPPORT, TERMINAL			
33	SCR, BHSC, RoHS (M4 X 20)			
32	HEX HEAD, FLANGED, M5 x 8mm LONG			
30	SPACER, STRIP GUIDE			
29	ASSEMBLY, STRIP GUIDE			
28	SPACER, CRIMPER			
24	STRIP GUIDE			
20	WASHER, FLAT, REG M4			
13	INSERT, SHEAR			
12	SPRING, COMPRESSION			
11	STOP, SHEAR			
10	SHEAR HOLDER, FRONT			
9	SHEAR, FLOATING			
8	ANVIL, COMBINATION, SPECIAL			
7	SPACER			
6				
5	DEPRESSOR, SHEAR			
4	BLOCK, CRIMPER SPACER			
3	CRIMPER, INSULATION O PREMIUM			
2	SPACER, CRIMPER			
1	CRIMPER, WIRE .042 F PREMIUM			
-77	PART NO	DESCRIPTION	ITEM NO	

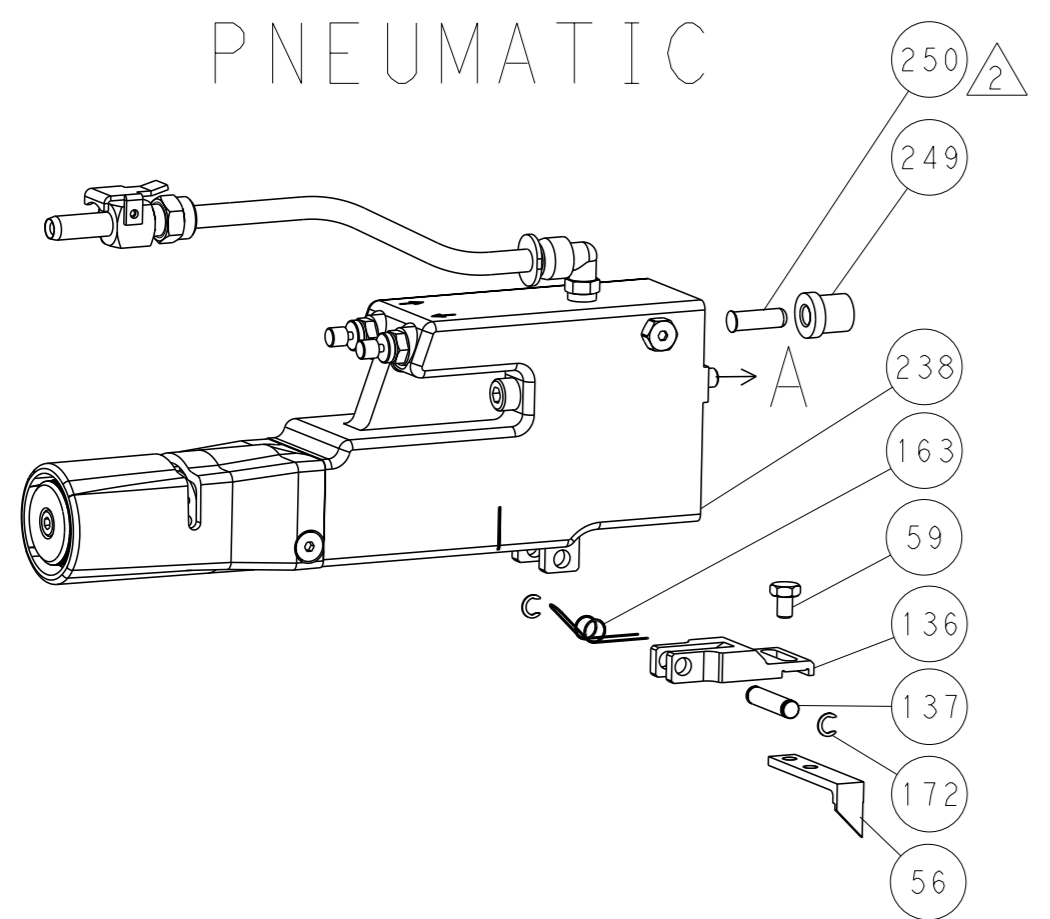
DIMENSIONS:	TOLERANCES UNLESS OTHERWISE SPECIFIED:	OWN	DATE	NAME
mm	0 PLC ± 1 PLC ± 2 PLC ± 3 PLC ± 4 PLC ± ANGLES ±	M. RILEY	19OCT2016	TE Connectivity Harrisburg, PA 17105-3608
		T. ELBIN	04NOV2016	
MATERIAL:	FINISH	APPROV	DATE	PRODUCT SPEC
		J. DEGRANGE	04NOV2016	
				APPLICATION SPEC
		WEIGHT	SIZE	CAGE CODE
			A1	00779
				DRAWING NO
				RESTRICTED TO
				Customer Accessible Production Drawing
				SCALE 1:2 SHEET 1 of 4 REV A1

LOC	DIST	REVISIONS				
A	66	REV	DESCRIPTION	DATE	OWN	APVD
-	-	1	SEE SHEET 1	-	-	-

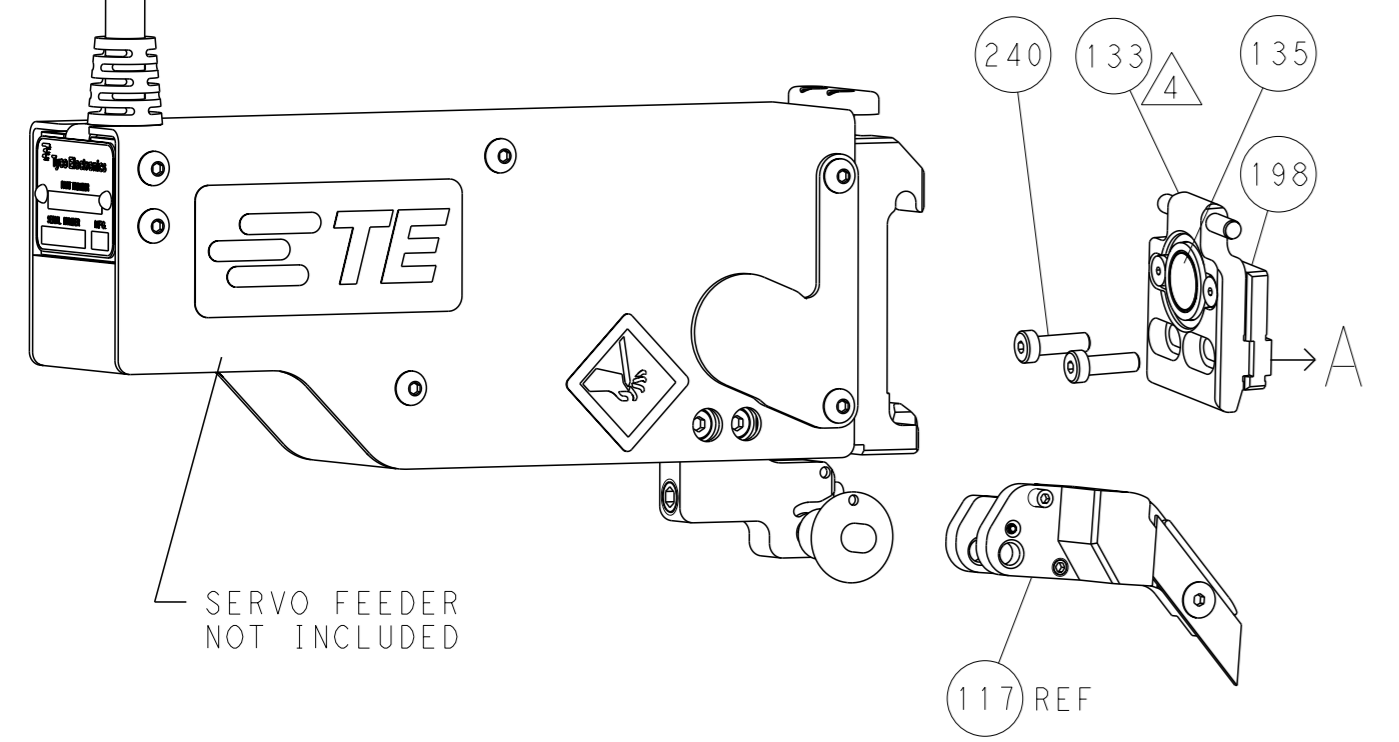
### FEED TYPE MECHANICAL



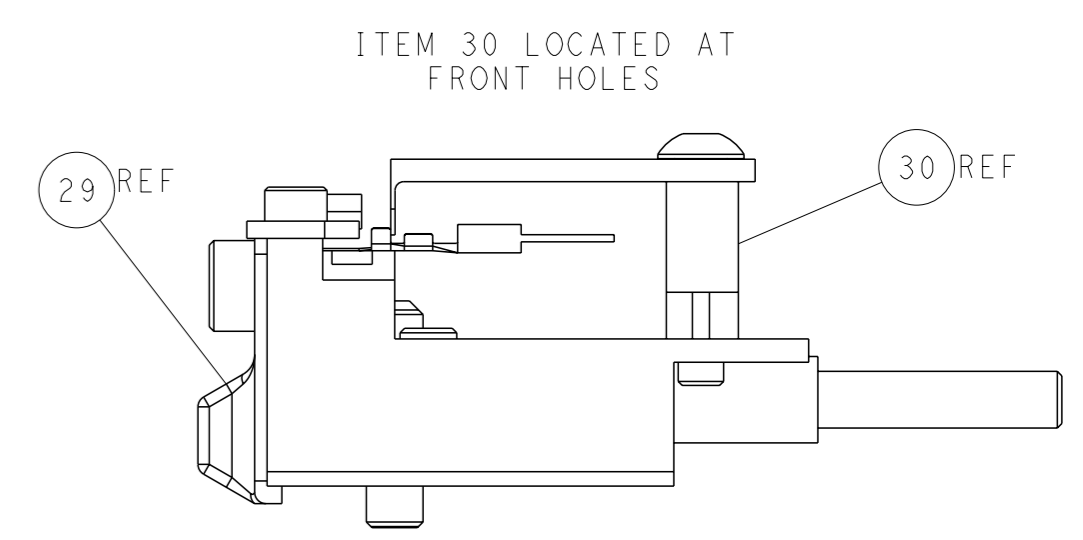
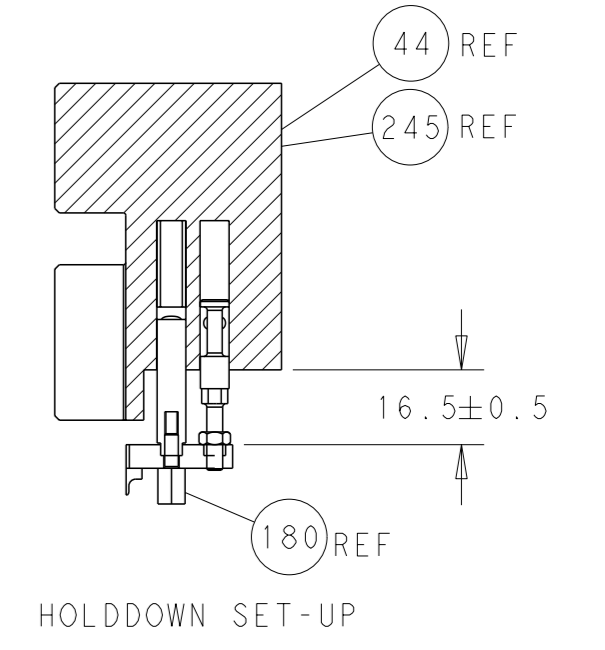
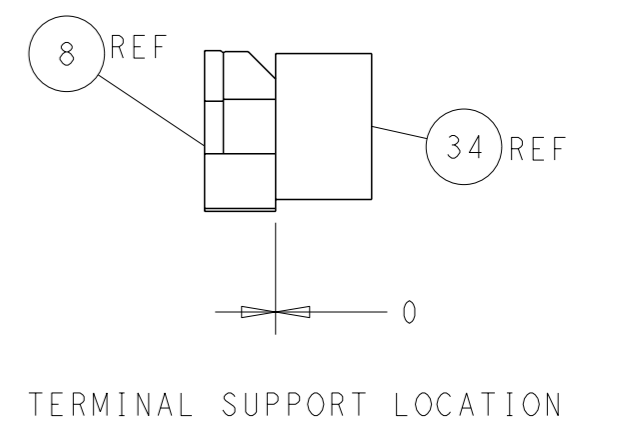
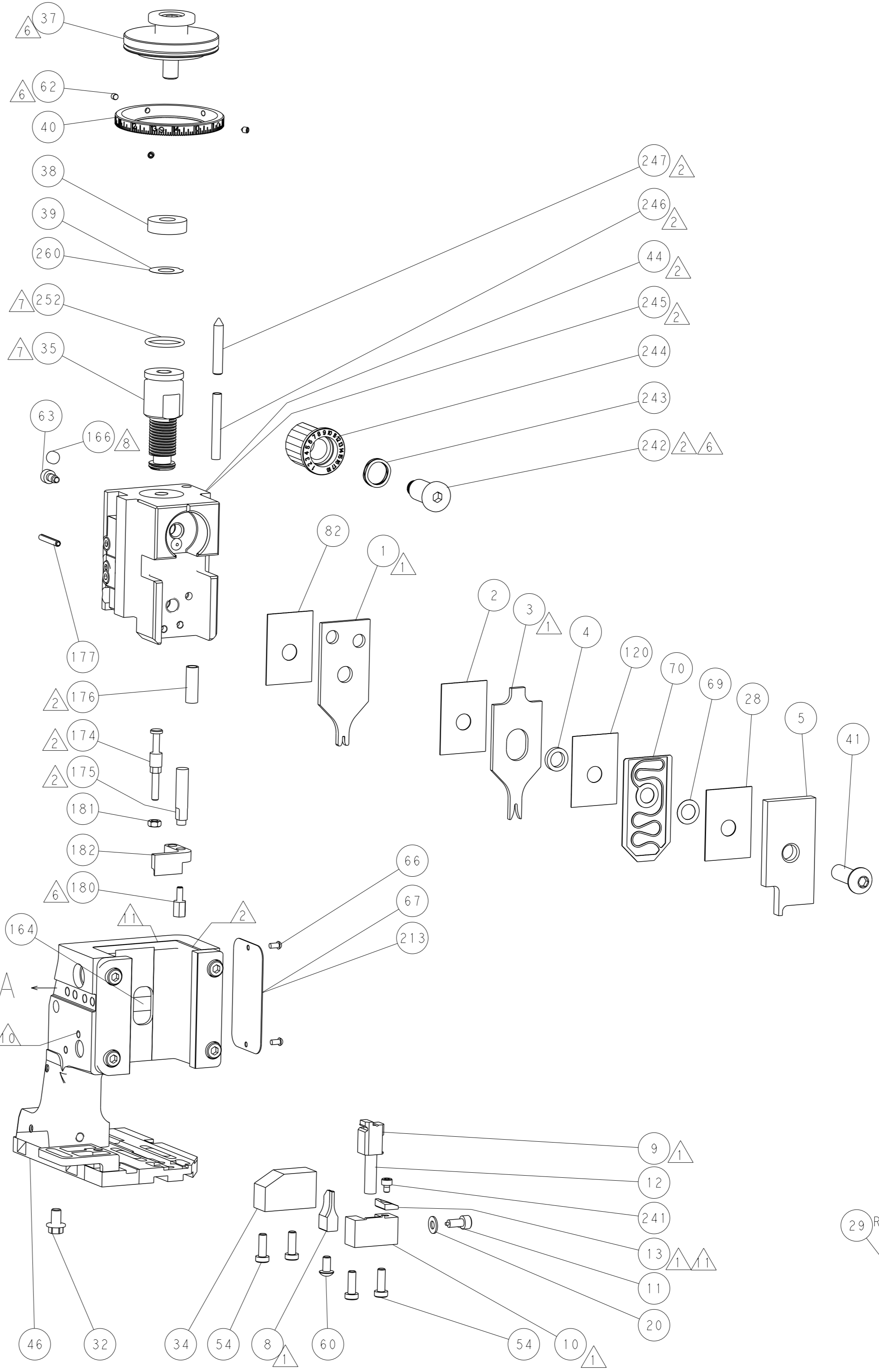
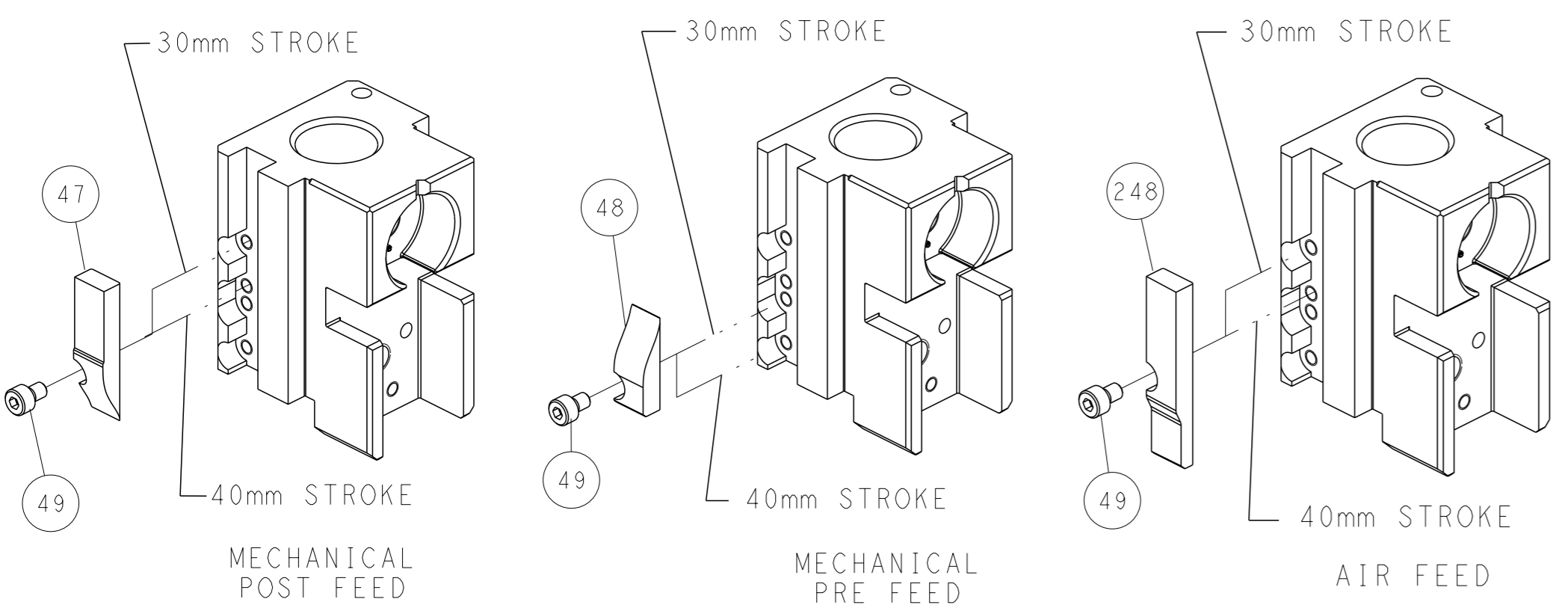
### PNEUMATIC



### SERVO LATCH PLATE



### CAM POSITIONS



**ATLANTIC VERSION**  
 Shown on sheets 1 of 4 & 2 of 4  
 (Pacific version shown on sheets 3 of 4 & 4 of 4)

<small>THIS DRAWING IS UNPUBLISHED. RELEASED FOR PUBLICATION BY TYCO ELECTRONICS CORPORATION. ALL RIGHTS RESERVED.</small>		OWN: M. RILEY 19OCT2016 CHK: T. ELBIN 04NOV2016 APVD: J. DEGRANGE 04NOV2016	NAME: Ocean Side Feed Applicator SIZE: A1 CAGE CODE: 00779 DRAWING NO: 2836476	TE Connectivity Harrisburg, PA 17105-3608
DIMENSIONS: mm TOLERANCES UNLESS OTHERWISE SPECIFIED: 0 PLC ± 1 PLC ± 2 PLC ± 3 PLC ± 4 PLC ± ANGLES ° ±	MATERIAL:	WEIGHT:	RESTRICTED TO:	SCALE: 1:2 SHEET: 2 of 4 REV: A1

PACIFIC VERSION TERMINATOR INTERFACE ADAPTER	PART NUMBER	REVISION	DESCRIPTION	FEED TYPE	
	2-2836476-1	A	FINE CRIMP HEIGHT ADJUST	MECHANICAL	OBSOLETE
	2-2836476-2	A	FINE CRIMP HEIGHT ADJUST	PNEUMATIC	OBSOLETE
	2-2836476-5	A	FINE CRIMP HEIGHT ADJUST	SERVO LATCH PLATE	OBSOLETE
	2-2836476-7	A	FINE CRIMP HEIGHT ADJUST	NONE	OBSOLETE
	7-2836476-7	A	CRIMP TOOLING KIT	-	-

APPLICATOR DATA		
CRIMP	SIZE	TYPE
WIRE	1.07 mm (.042)	F
INSUL	1.57 mm (.062)	O
APPLICATOR INSTRUCTIONS 408-10389		

TERMINAL DATA: TE TERMINAL	TE CRIMP SPECIFICATION
TERMINAL NAME: MQS OIN CONTACT	
WIRE STRIP LENGTH 3.55-3.85 mm (.140-.152 IN)	INSULATION DIAMETER RANGE Ø0.85-1.20 mm (.033-.047 IN)
TERMINAL APPLICATION SPECIFICATION 114-18021	-
TERMINALS APPLIED	
TE TERMINAL 1355717-1	TE TERMINAL 1355717-5
TE TERMINAL 1355719-1	TE TERMINAL 1355719-2

WIRE SIZE	CRIMP HEIGHT mm [INCH]	CRIMP HEIGHT REFERENCE SETTING
0.22mm2	0.77+/-0.03 [.030+/-0.001]	5.8
0.20mm2	0.75+/-0.03 [.030+/-0.001]	5.9
0.14mm2	0.71+/-0.03 [.028+/-0.001]	6.6
0.08mm2	0.64+/-0.03 [.025+/-0.001]	7.4

- RECOMMENDED SPARE PARTS
- GREASE BEARING SURFACES LIGHTLY
- LUBRICATE DAILY PER THE APPLICATOR INSTRUCTION SHEET SUPPLIED WITH THE APPLICATOR.
- APPLICATOR SPECIFIC DATA TO BE ENTERED INTO BLANK MEMORY CHIP AT ASSEMBLY. SEE BELOW FOR PART NUMBER:  
 MECHANICAL FEED WITH "SMART APPLICATOR" CONVERSION: 8-2836476-4  
 PNEUMATIC FEED WITH "SMART APPLICATOR" CONVERSION: 8-2836476-4  
 SERVO FEED WITH "FINE CRIMP HEIGHT ADJUST": 8-2836476-5
- ADJUSTMENT OF THE STRIPPER MAY BE REQUIRED WHEN MOVING THE APPLICATOR BETWEEN BENCH AND LEADMAKER APPLICATIONS.
- APPLY PART NUMBER 1-23419-5 LOCTITE TO THREADS OF ITEM 62.  
 APPLY PART NUMBER 2-23419-6 LOCTITE TO THREADS OF ITEM 242.
- GREASE THREADS, GROOVE AND O-RING ON ITEMS 139 & 152.
- MAGNET MUST BE ORIENTED CORRECTLY IN ORDER TO PROPERLY ACTUATE THE COUNTER.
- CRIMP HEIGHT REFERENCE SETTING WAS THE SETTING USED WHEN THE APPLICATOR WAS QUALIFIED AT THE FACTORY. ADJUSTMENT MAY BE NECESSARY WHEN RUNNING APPLICATOR IN THE FIELD.
- SPARE FEED CAM STORAGE LOCATION REFER TO INSTRUCTION SHEET FOR ADDITIONAL INFORMATION.
- TO CONVERT THE APPLICATOR TO A NON-CARRIER CUTTING STYLE, REMOVE ITEM 13 AND ATTACH TO THE LOCATION ON BACK SIDE OF THE HOUSING. REFER TO INSTRUCTION SHEET FOR ADDITIONAL INFORMATION.
- THIS APPLICATOR IS SPECIFIC FOR USE IN A STRIPPER SEAL TERMINATING UNIT.

**\*WARNING**  
 ON INSTALLATION, SET WIRE DISC, ITEM 40 TO LARGEST WIRE SIZE SETTING. USE OF SETTINGS BELOW MINIMUM REQUIRED CRIMP HEIGHT SETTING WILL CAUSE DAMAGE TO CRIMP TOOLING.

-	1	1	1	1	2119782-1	FINE ADJUST HEAD ASM, PACIFIC STYLE	251
-	-	-	-	-	2119640-1	PUSH ROD, AIR FEED	250
-	-	-	-	-	1803259-1	BUSHING, FLANGED	249
-	1	1	1	1	1-22279-3	SPRING, COMPRESSION	246
-	1	1	1	1	2119082-8	CAM, SNAIL, INSULATION ADJUSTMENT	244
-	1	1	1	1	2079764-1	WASHER, WAVE SPRING, CREST-TO-CREST	243
-	1	1	1	1	2119083-1	RETAINER, INSULATION DIAL	242
-77	-27	-25	-22	-21	PART NO	DESCRIPTION	ITEM NO

**PACIFIC VERSION**  
 Shown on sheets 3 of 4 & 4 of 4  
 (Atlantic version shown on sheets 1 of 4 & 2 of 4)

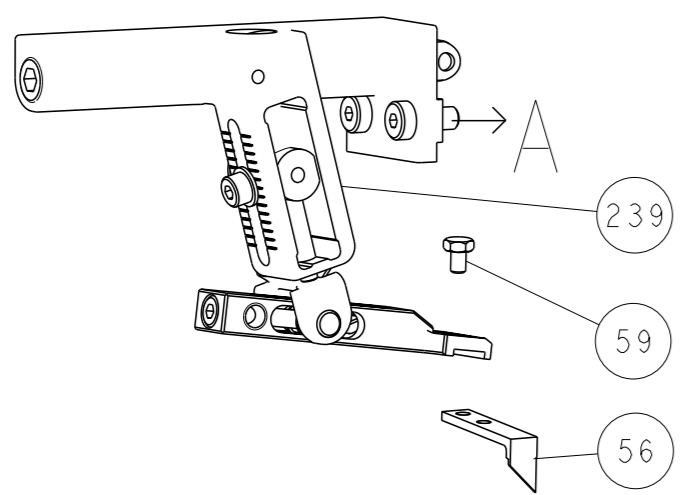
SET UP GAUGE	LOC	DIST	REVISIONS					
2119599-1	A	66	P	LYN	DESCRIPTION	DATE	OWN	APVD
			-	-	SEE SHEET 1	-	-	-

-	1	1	1	1	7-18023-7	SCR, SKT HD CAP M3 X 4.0	241	
-	-	2	-	-	2168400-6	SHCS, LOW HEAD, RoHS, M5 X 16	240	
-	-	-	-	1	2119580-1	MECHANICAL FEED ASSEMBLY	239	
-	-	-	1	-	2063440-1	AIR FEED MODULE	238	
-	-	1	-	-	2119740-2	TAG, IDENTIFICATION	213	
-	-	1	-	-	1901094-3	SPACER, FEEDER	198	
-	1	1	1	1	4-1722335-3	STRIPPER, SIDE FEED	182	
-	1	1	1	1	1-5018030-0	NUT, HEX, REG, RoHS, M3.5	181	
-	1	1	1	1	1-1752354-6	STANDOFF, HOLD-DOWN	180	
-	1	1	1	1	9931111-1	PIN, SLOTTED SPRING 3.0 X 20.0	177	
-	1	1	1	1	5-22280-0	SPRING, COMPRESSION	176	
-	1	1	1	1	1752353-3	GUIDE PIN, HOLDDOWN	175	
-	1	1	1	1	1901680-2	GUIDE PIN, HOLDDOWN	174	
-	-	-	2	-	21045-3	RING, RETAIN, EXTERN, 3/16 CRESCENT	172	
-	1	1	1	1	994969-1	MAGNET, RARE EARTH HIGH ENERGY	166	
-	REF	REF	REF	REF	994970-2	COUNTER, MAGNETIC	164	
-	-	-	-	1	240638-1	SPRING, FEED FINGER	163	
-	1	1	1	1	8-21084-1	O-RING, .801 ID, .070 DIA, MAT.	152	
-	-	-	-	1	2119641-2	FEED CAM, AIR FEED	151	
-	1	1	1	1	2119798-2	DETENT PIN	145	
-	1	1	1	1	2079383-8	SCR, BHSC, RoHS (M4 X 16)	144	
-	4	4	4	4	2168400-5	SHCS, LOW HEAD, RoHS, M4 X 20	143	
-	-	-	-	1	2119653-2	FEED CAM, POST FEED	142	
-	1	1	1	1	2-2119656-2	APPLICATOR BASIC ASSEMBLY, SF	141	
-	1	1	1	1	2119650-1	RAM, ASIAN STYLE, SIDE FEED	140	
-	1	1	1	1	2119092-2	BOLT, ADJUSTMENT	139	
-	-	-	-	1	3-23627-7	PIN, RETAIN, GRVD, 3/16 X .854	137	
-	-	-	-	1	2119799-1	HOLDER, FEED FINGER, AF	136	
-	-	REF	-	-	SEE NOTE 4	MEMORY CHIP, PROGRAMMED	135	
-	-	-	-	1	1633743-1	SERVO FEED LATCH ASM	133	
-	1	1	1	1	455888-3	SPACER, CRIMPER	120	
-	-	REF	-	-	2119944-1	FEED FINGER ASSEMBLY, SF	117	
-	1	1	1	1	455888-4	SPACER, CRIMPER	82	
-	1	1	1	1	2119956-1	DOCUMENTATION PACKAGE	71	
-	1	1	1	1	1-2119791-4	DEPRESSOR, WIRE	70	
-	1	1	1	1	2119943-1	WASHER, SPACER	69	
-	1	-	1	1	2119740-1	TAG, IDENTIFICATION	67	
-	2	2	2	2	2168078-1	SCREW, DRIVE, RH, RoHS, 2 x .188	66	
-	1	1	1	1	2119793-1	LIMITER, ADJUSTMENT BOLT	63	
-	3	3	3	3	992763-5	SCR, SET, SOC, CONE PNT, M3 X 4.0	62	
-	-	-	-	1	5-18022-5	SCR, HEX HD CAP, M4 X 6.0	59	
-	-	-	-	1	1338685-1	PAWL, FEED	56	
-	2	2	2	2	2168083-3	SCR, SKT HD CAP, RoHS, M4 X 12.0	53	
-	1	1	1	1	5018030-1	NUT, HEX, REG, RoHS, M3	52	
-	1	1	1	1	811242-5	BUMPER, HOLD DOWN	51	
-	1	1	1	1	690753-2	SPACER, TONKER	50	
-	-	-	-	1	2	18023-9	SCR, SKT HD CAP M4 X 6.0	49
-	-	-	-	1	2119652-1	FEED CAM, PRE FEED	48	
-	1	1	1	1	2079383-7	SCR, BHSC, RoHS (M8 X 25)	41	
-	1	1	1	1	2119645-1	DISC, NUMBERED FA WIRE ADJUSTMENT	40	
-	1	1	1	1	2119957-1	APPLICATOR SHIM PACK	39	
-	1	1	1	1	1-2119644-4	RAM WASHER, PRECISION	38	
-	1	1	1	1	1752356-3	SUPPORT, TERMINAL	34	
-	2	2	2	2	2079383-5	SCR, BHSC, RoHS (M4 X 20)	33	
-	1	1	1	1	2161328-1	HEX HEAD, FLANGED, M5 x 8mm LONG	32	
-	1	1	1	1	1320908-6	SPACER, STRIP GUIDE	30	
-	1	1	1	1	2119959-1	ASSEMBLY, STRIP GUIDE	29	
-	1	1	1	1	455888-5	SPACER, CRIMPER	28	
-	1	1	1	1	1320928-2	STRIP GUIDE	24	
-	1	1	1	1	1-18028-2	WASHER, FLAT, REG M4	20	
-	1	1	1	1	2119806-1	INSERT, SHEAR	13	
-	1	1	1	1	3-22280-3	SPRING, COMPRESSION	12	
-	1	1	1	1	1-356885-3	STOP, SHEAR	11	
-	1	1	1	1	2119805-1	SHEAR HOLDER, FRONT	10	
-	1	1	1	1	1633861-3	SHEAR, FLOATING	9	
-	1	1	1	1	1333323-1	ANVIL, COMBINATION, SPECIAL	8	
-	1	1	1	1	3-240641-6	SPACER	7	
-	-	-	-	-	-	-	6	
-	1	1	1	1	2119757-4	DEPRESSOR, SHEAR	5	
-	1	1	1	1	238011-4	BLOCK, CRIMPER SPACER	4	
-	1	1	1	1	2119784-9	CRIMPER, INSULATION O PREMIUM	3	
-	1	1	1	1	455888-4	SPACER, CRIMPER	2	
-	1	1	1	1	456401-9	CRIMPER, WIRE .042 F PREMIUM	1	
-77	-27	-25	-22	-21	PART NO	DESCRIPTION	ITEM NO	

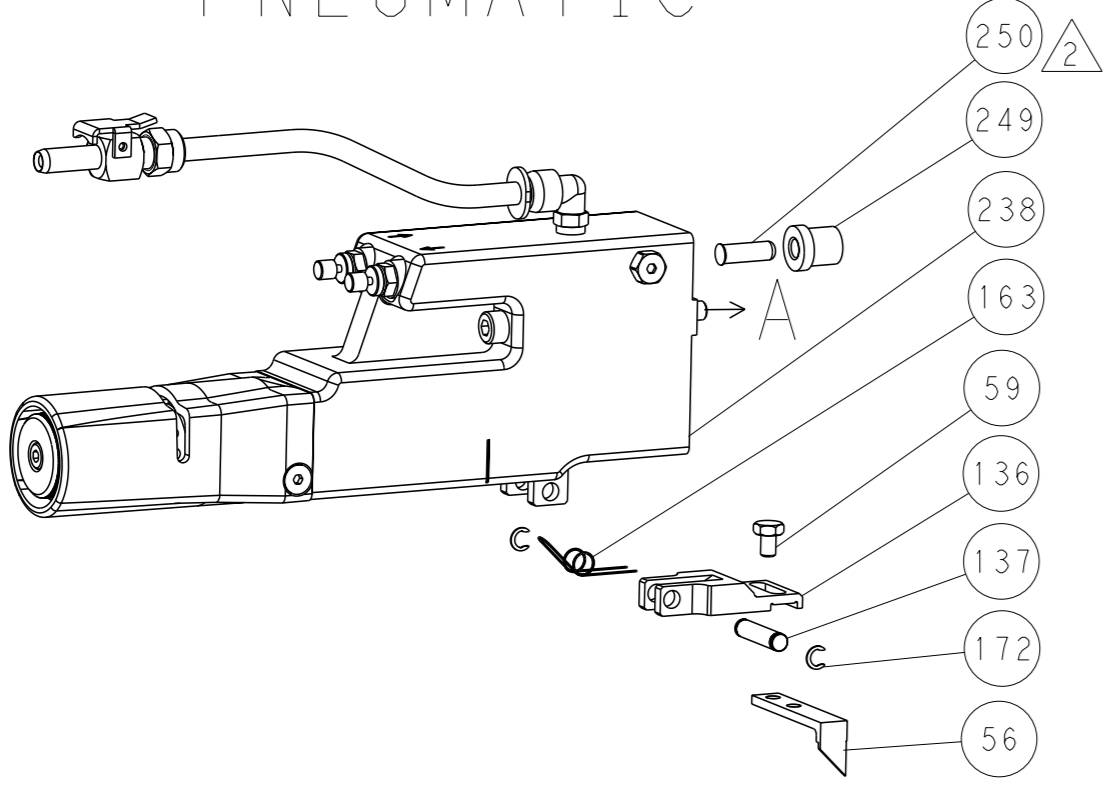
DIMENSIONS:		TOLERANCES UNLESS OTHERWISE SPECIFIED:		APPROVED:		NAME:	
mm	0 PLC	±		M. RILEY	19OCT2016	TE Connectivity	Harrisburg, PA 17105-3608
	1 PLC	±		T. ELBIN	04NOV2016	Ocean Side Feed Applicator	Customer Accessible Production Drawing
	2 PLC	±		J. DEGRANGE	04NOV2016		
	3 PLC	±					
	4 PLC	±					
MATERIAL:	FINISH:	WEIGHT:	SCALE:	1:2	SHEET 3 of 4	REV A1	

REVISONS		DATE	OWN	APVD
LOC	DIST			
A	66			
P	LYR	DESCRIPTION		
		SEE SHEET 1		

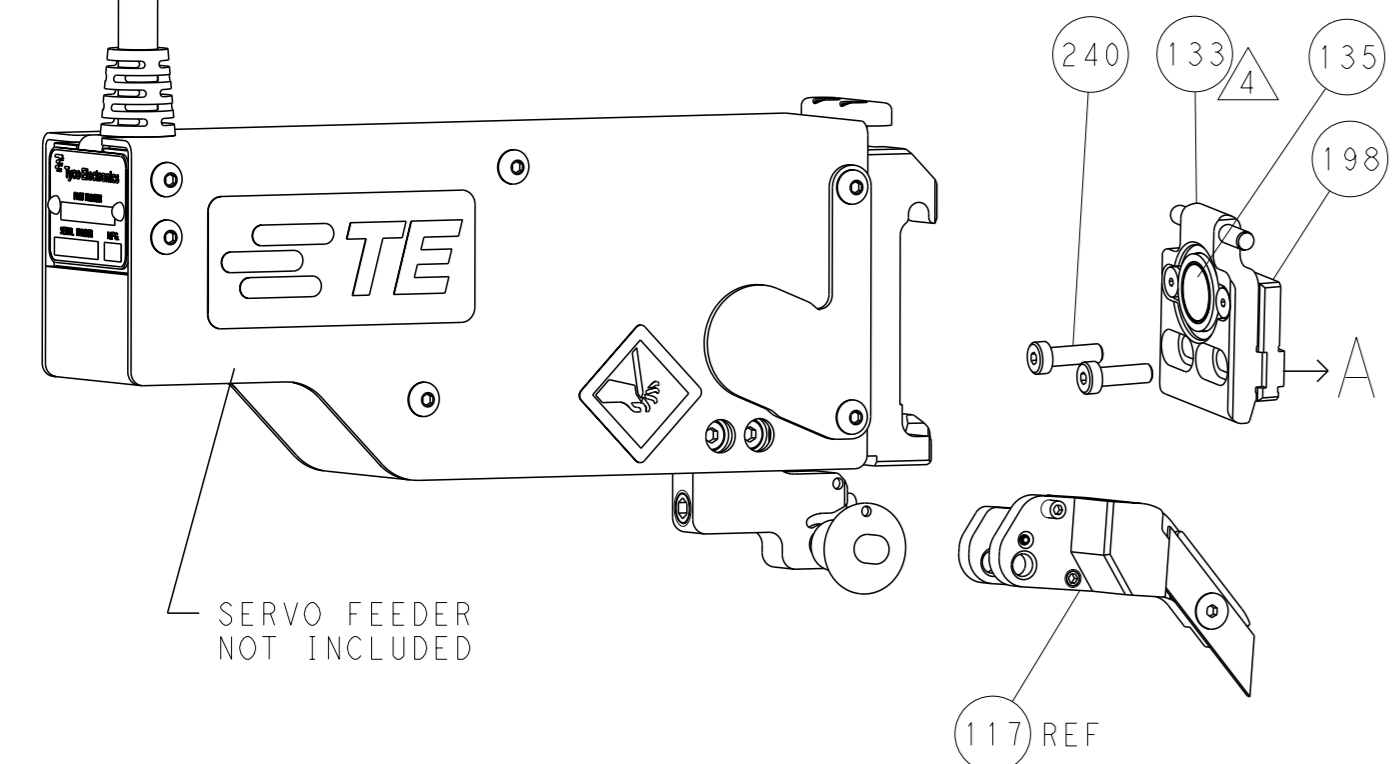
# FEED TYPE MECHANICAL



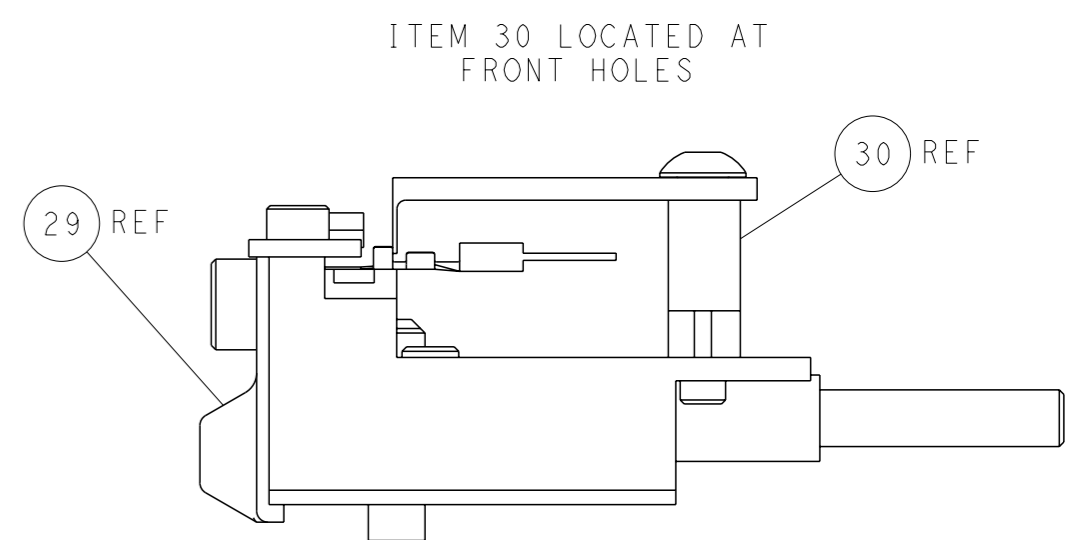
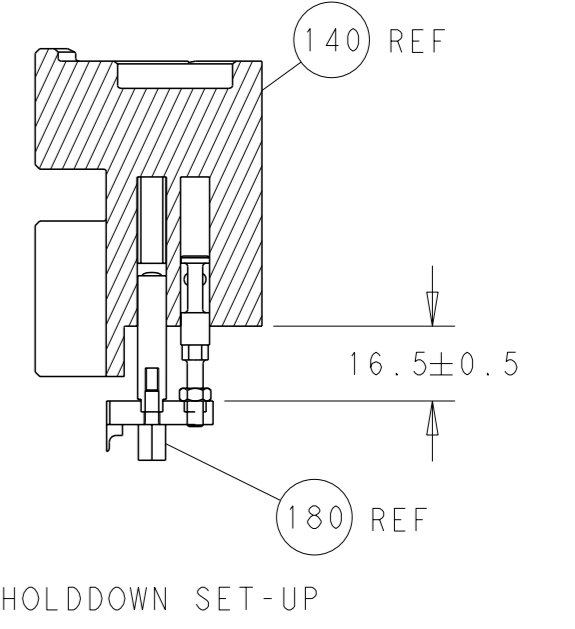
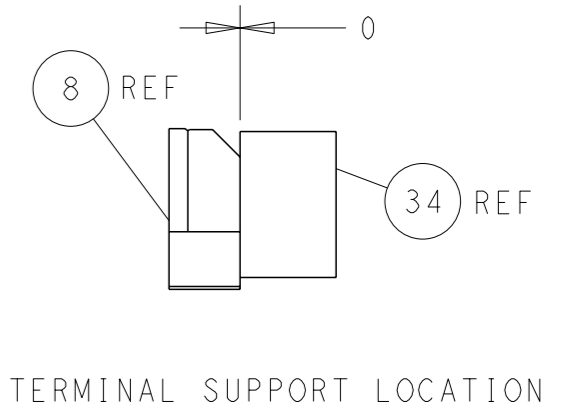
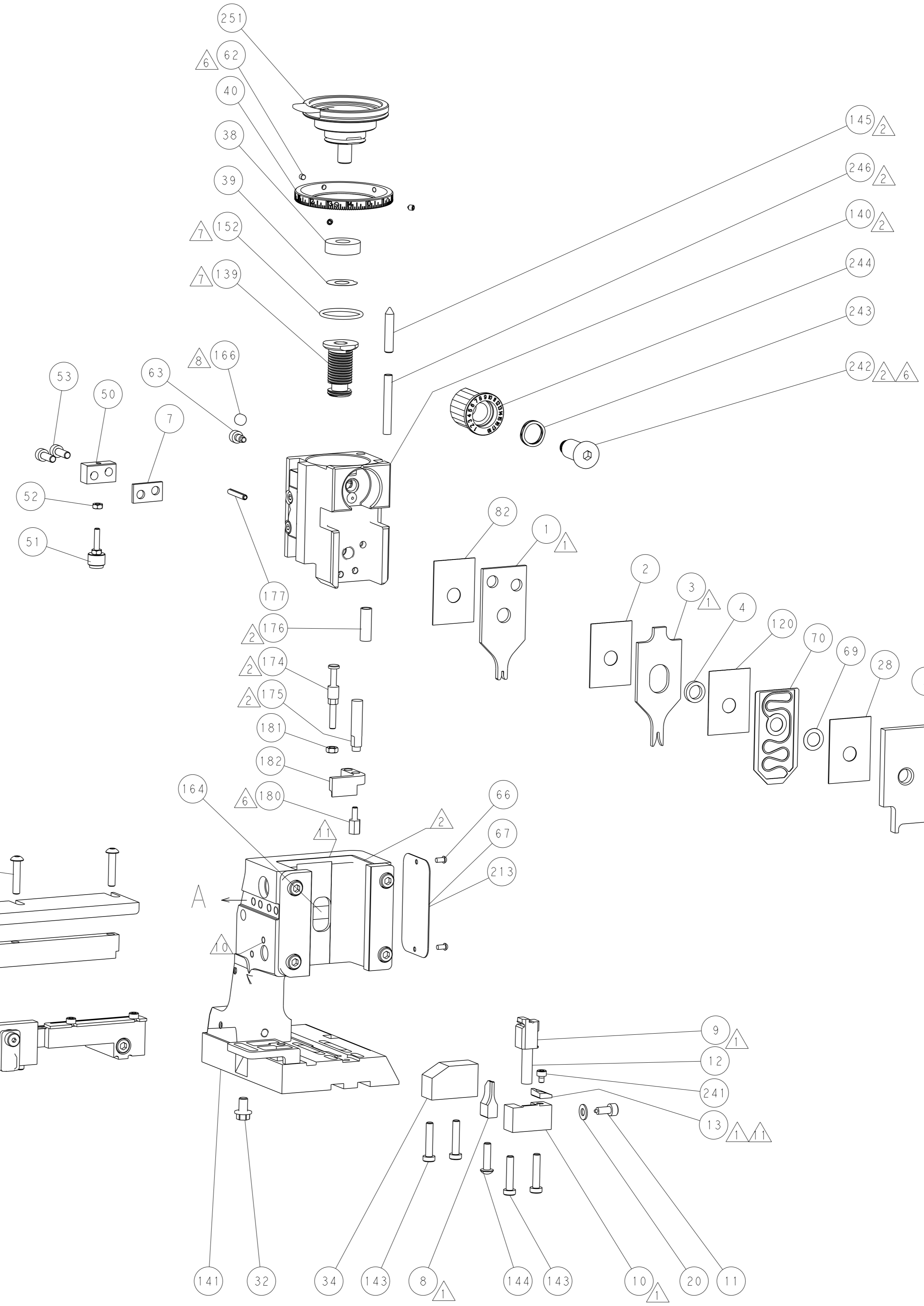
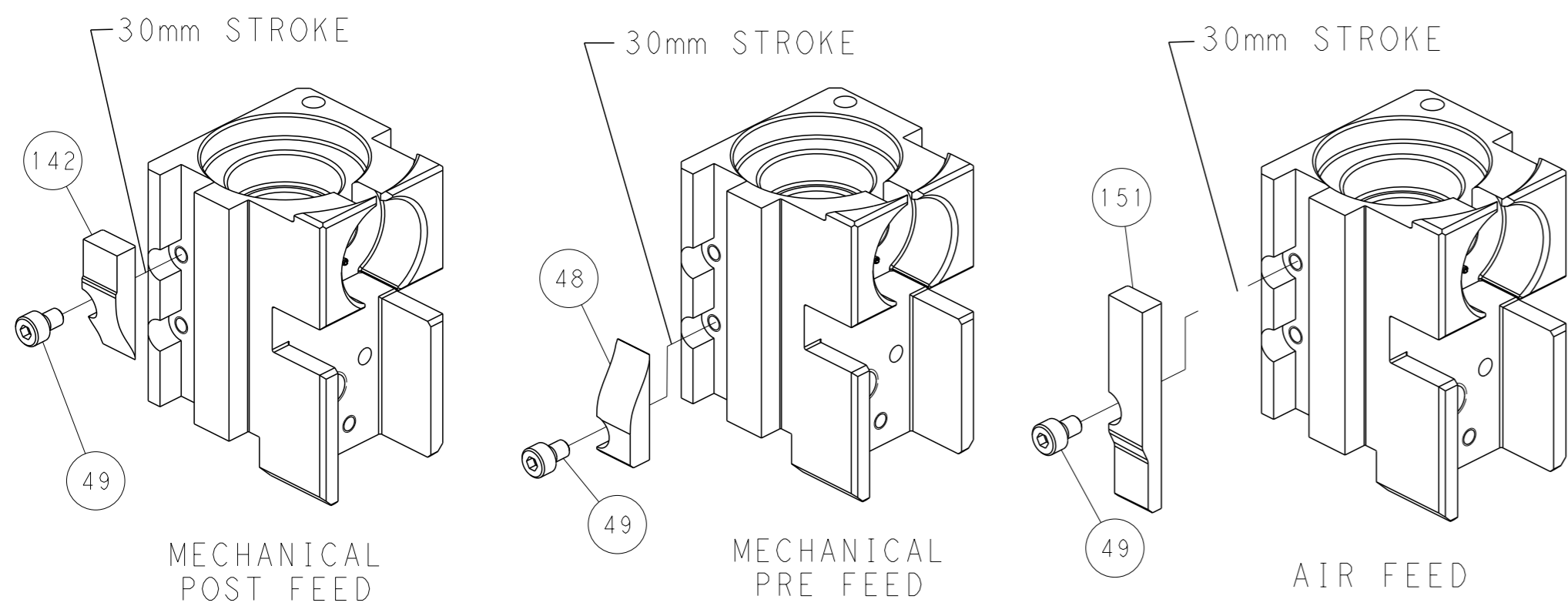
# PNEUMATIC



# SERVO LATCH PLATE



# CAM POSITIONS



FEED TRACK POSITION GUIDE BY INSULATION BARREL

**PACIFIC VERSION**  
 Shown on sheets 3 of 4 & 4 of 4  
 (Atlantic version shown on sheets 1 of 4 & 2 of 4)

DIMENSIONS: mm 		TOLERANCES UNLESS OTHERWISE SPECIFIED: 0 PLC ± 1 PLC ± 2 PLC ± 3 PLC ± 4 PLC ± ANGLES ±		OWN M. RILEY 19OCT2016 CHK T. ELBIN 04NOV2016 APVD J. DEGRANGE 04NOV2016 PRODUCT SPEC APPLICATION SPEC WEIGHT MATERIAL		NAME Ocean Side Feed Applicator SIZE CAGE CODE DRAWING NO. RESTRICTED TO A1 00779 C=2836476 Customer Accessible Production Drawing SCALE 1:2 SHEET 4 OF 4 REV A1	
-----------------------	--	---	--	--	--	---	--