

ATLANTIC VERSION TERMINATOR INTERFACE ADAPTER	PART NUMBER	REVISION	DESCRIPTION	FEED TYPE	APPLICATOR STYLE CONVERSION CHART						
					CONVERT TO	PART NUMBERS REQUIRED					
						PNEUMATIC FEED	2119950-1	1338683-8	5-18022-5	2119641-1	2119799-1
2836397-1	C	FINE CRIMP HEIGHT ADJUST	MECHANICAL	SERVO LATCH PLATE	2119951-1	-	8-2836397-5	1901094-3	-	2168400-6 (QUANTITY 2)	
				SMART APPLICATOR	2161326-1	-	8-2836397-4	-	-		
2836397-2	C	FINE CRIMP HEIGHT ADJUST	PNEUMATIC	MECHANICAL FEED	2119949-1	1338683-8	5-18022-5	2119653-1	-	-	
				SERVO LATCH PLATE	2119951-1	-	8-2836397-5	1901094-3	-	2168400-6 (QUANTITY 2)	
2836397-5	C	FINE CRIMP HEIGHT ADJUST	SERVO LATCH PLATE	MECHANICAL FEED	2119949-1	1338683-8	5-18022-5	2119653-1	-	-	
				PNEUMATIC FEED	2119950-1	1338683-8	5-18022-5	2119641-1	2119799-1	2063440-1	
2836397-6	C	NON-CRIMP HEIGHT ADJUST	SERVO LATCH PLATE	-	-	-	-	-	-	-	
2836397-7	C	FINE CRIMP HEIGHT ADJUST	NONE	-	-	-	-	-	-	-	
7-2836397-7	B	CRIMP TOOLING KIT	-	-	-	-	-	-	-	-	

APPLICATOR DATA		
CRIMP WIRE	SIZE	TYPE
1.83 mm [.072]		F
INSUL	3.50 mm [.138]	O

APPLICATOR INSTRUCTIONS 408-10389

TERMINAL DATA: YAZAKI TERMINAL YAZAKI CRIMP SPECIFICATION	
TERMINAL NAME: SWP TYPE TERMINAL M	
WIRE STRIP LENGTH 4.50-5.50 mm [.177-.217 IN]	INSULATION DIAMETER RANGE Ø 1.3
TERMINAL APPLICATION SPECIFICATION 7114-1471 Rev -	

TERMINALS APPLIED				
TE TERMINAL	YAZAKI TERMINAL	TE SEAL	YAZAKI SEAL	CABLE DIAMETER
1949769-1	7114-1471	1949770-1	7157-7812	Ø1.30-2.10
1949769-2	7114-1471-08			
1949769-3	7114-1571-08			

WIRE SIZE	CRIMP HEIGHT mm [INCH]	CRIMP HEIGHT REFERENCE SETTING
0.85mm2	1.20+/-0.05 [.047+/-0.002]	5.6
0.75mm2	1.20+/-0.05 [.047+/-0.002]	5.6
0.50mm2	1.10+/-0.05 [.043+/-0.002]	6.8
0.30mm2	1.05+/-0.05 [.041+/-0.002]	7.3

- 1 RECOMMENDED SPARE PARTS
- 2 GREASE BEARING SURFACES LIGHTLY
- 3 LUBRICATE DAILY PER THE APPLICATOR INSTRUCTION SHEET SUPPLIED WITH THE APPLICATOR.
- 4 APPLICATOR SPECIFIC DATA TO BE ENTERED INTO BLANK MEMORY CHIP AT ASSEMBLY. SEE BELOW FOR PART NUMBER:
 MECHANICAL FEED WITH "SMART APPLICATOR" CONVERSION: 8-2836397-4
 PNEUMATIC FEED WITH "SMART APPLICATOR" CONVERSION: 8-2836397-4
 SERVO FEED WITH "FINE CRIMP HEIGHT ADJUST": 8-2836397-5
 SERVO FEED WITH "NON-CRIMP HEIGHT ADJUST": 8-2836397-6
- 5 ADJUSTMENT OF THE STRIPPER MAY BE REQUIRED WHEN MOVING THE APPLICATOR BETWEEN BENCH AND LEADMAKER APPLICATIONS.
- 6 APPLY PART NUMBER 1-23419-5 LOCTITE TO THREADS OF ITEM 62. APPLY PART NUMBER 2-23419-6 LOCTITE TO THREADS OF ITEM 242. FOR -6 ONLY APPLY PART NUMBER 1-23419-5 LOCTITE TO THREADS OF ITEM 37.
- 7 GREASE THREADS, GROOVE AND O-RING ON ITEMS 35 & 252.
- 8 MAGNET, ITEM 166 MUST BE ORIENTED CORRECTLY IN ORDER TO PROPERLY ACTUATE THE COUNTER.
- 9 CRIMP HEIGHT REFERENCE SETTING WAS THE SETTING USED WHEN THE APPLICATOR WAS QUALIFIED AT THE FACTORY. ADJUSTMENT MAY BE NECESSARY WHEN RUNNING APPLICATOR IN THE FIELD.
- 10 SPARE FEED CAM STORAGE LOCATION REFER TO INSTRUCTION SHEET FOR ADDITIONAL INFORMATION.
- 11 TO CONVERT THE APPLICATOR TO A NON-CARRIER CUTTING STYLE, REMOVE ITEM 13 AND ATTACH TO THE LOCATION ON THE BACK SIDE OF THE HOUSING. REFER TO INSTRUCTION SHEET FOR ADDITIONAL INFORMATION.
- 12 WHEN ASSEMBLING A NON CRIMP HEIGHT ADJUST APPLICATOR (-6) USE SHIMS FROM ITEM 260 TO ACHIEVE A NOMINAL SHIM HEIGHT OF 4.6
- 13 THIS APPLICATOR APPLIES TERMINAL WITH A SEAL.
- 14 APPLY TORQ-SEAL IN ALLEN SOCKET TO FILL HOLE AFTER FLAT HD HAS BEEN ADJUSTED TO CORRECT HEIGHT AT QUALIFICATION. APPLY #1-23419-5 LOC-TITE TO THREADS.
- 15 TERMINAL LUBRICANT IS RECOMMENDED.

***WARNING**
 ON INSTALLATION, SET WIRE DISC, ITEM 40 TO LARGEST WIRE SIZE SETTING. USE OF SETTINGS BELOW MINIMUM REQUIRED CRIMP HEIGHT SETTING WILL CAUSE DAMAGE TO CRIMP TOOLING.

2	-	-	1	-	-	-	2119957-2	APPLICATOR SHIM PACK	260
1	-	1	-	1	1	1	8-21084-0	O-RING, .676 ID, .070 DIA. MAT.	252
-	-	-	-	1	-	-	2119640-1	PUSH ROD, AIR FEED	250
-	-	-	-	-	1	-	2079988-1	BUSHING, LCH5-12, MISUMI	249
-77	-7	-6	-5	-2	-1		PART NO	DESCRIPTION	ITEM NO

ATLANTIC VERSION
 Shown on sheets 1 of 4 & 2 of 4
 (Pacific version shown on sheets 3 of 4 & 4 of 4)

SET UP GAUGE		LOC	DIST	REVISIONS					
2119599-1		A	66	P	LTN	DESCRIPTION	DATE	OWN	APVD
				A		RELEASED	12SEP2016	MR	GB
				B		ECR-16-016220	16NOV2016	MZ	TE
				C		ECR-17-008560	13JUN2017	TB	GB

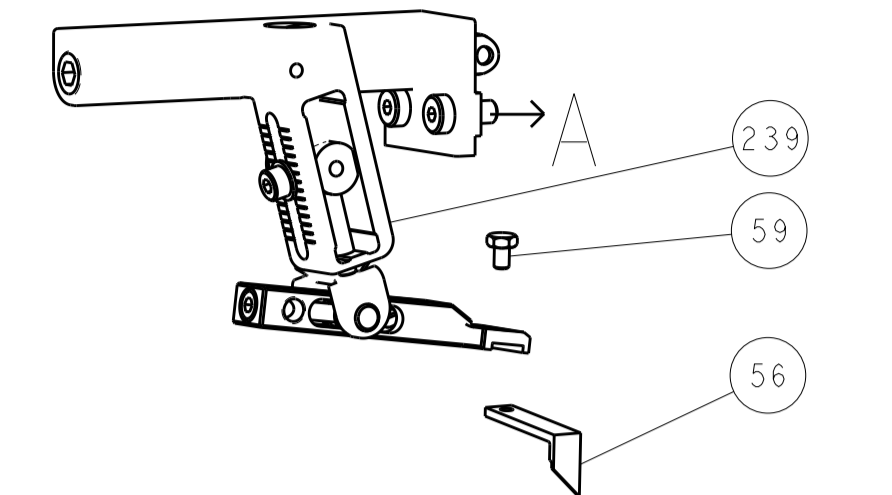
-	-	-	-	1	-		2119641-1	FEED CAM, AIR FEED	248
-	1	-	1	1	1		2119798-1	DETENT PIN	247
-	1	-	1	1	1		1-22279-3	SPRING, COMPRESSION	246
-	-	1	-	-	-		2119758-1	RAM, AMP STYLE, SIDE FEED, NON-ADJ.	245
-	1	1	1	1	1		2119082-2	CAM, SNAIL, INSULATION ADJUSTMENT	244
-	1	1	1	1	1		2079764-1	WASHER, WAVE SPRING, CREST-TO-CREST	243
-	1	1	1	1	1		2119083-1	RETAINER, INSULATION DIAL	242
-	1	1	1	1	1		7-18023-7	SCR, SKT HD CAP M3 X 4.0	241
-	-	2	2	-	-		2168400-6	SHCS, LOW HEAD, RoHS, M5 X 16	240
-	-	-	-	-	1		2119580-1	MECHANICAL FEED ASSEMBLY	239
-	-	-	-	-	1		2063440-1	AIR FEED MODULE	238
-	-	1	1	-	-		2119740-2	TAG, IDENTIFICATION	213
-	-	1	1	-	-		1901094-3	SPACER, FEEDER	198
-	-	-	-	2	-		21045-3	RING, RETAIN, EXTERN, 3/16 CRESCENT	172
-	1	1	1	1	1		994969-1	MAGNET, RARE EARTH HIGH ENERGY	166
-	REF	REF	REF	REF	REF		994970-2	COUNTER, MAGNETIC	164
-	-	-	-	1	-		240638-1	SPRING, FEED FINGER	163
-	-	-	-	1	-		3-23627-7	PIN, RETAIN, GRVD, 3/16 X .854	137
-	-	-	-	1	-		2119799-1	HOLDER, FEED FINGER, AF	136
-	-	REF	REF	-	-		SEE NOTE 4	MEMORY CHIP, PROGRAMMED	135
-	-	1	1	-	-		1633743-1	SERVO FEED LATCH ASM	133
-	-	REF	REF	-	-		2119944-1	FEED FINGER ASSEMBLY, SF	117
-	1	1	1	1	1		2119955-1	ASSY, LUBRICATOR, SIDE FEED	113
-	1	1	1	1	1		455888-7	SPACER, CRIMPER	82
-	1	1	1	1	1		2119956-1	DOCUMENTATION PACKAGE	71
-	1	1	1	1	1		2119791-5	DEPRESSOR, WIRE	70
-	1	-	-	1	1		2119740-1	TAG, IDENTIFICATION	67
-	2	2	2	2	2		2168078-1	SCREW, DRIVE, RH, RoHS, 2 x .188	66
-	1	-	1	1	1		2119793-1	LIMITER, ADJUSTMENT BOLT	63
-	3	-	3	3	3		992763-5	SCR, SET, SOC, CONE POINT, M3 X 4.0	62
-	1	1	1	1	1		2079383-4	SCR, BHSC, RoHS (M4 X 8)	60
-	-	-	-	1	1		5-18022-5	SCR, HEX HD CAP, M4 X 6.0	59
-	1	1	1	1	1		985575-3	SCR, FLT SKT HD CAP M3 X 10.0	57
-	-	-	-	1	1		1338683-8	FEED PAWL	56
-	4	4	4	4	4		2168400-1	SHCS, LOW HEAD, RoHS, M4 X 12	54
-	2	2	2	2	2		2168083-8	SCR, SKT HD CAP, RoHS, M4 X 16	53
-	1	1	1	1	1		5018030-1	NUT, HEX, REG, RoHS, M3	52
-	1	1	1	1	1		811242-5	BUMPER, HOLD DOWN	51
-	1	1	1	1	1		690753-2	SPACER, TONKER	50
-	-	-	-	1	2		18023-9	SCR, SKT HD CAP M4 X 6.0	49
-	-	-	-	-	1		2119652-1	FEED CAM, PRE FEED	48
-	-	-	-	-	1		2119653-1	FEED CAM, POST FEED	47
-	1	1	1	1	1		2119656-9	APPLICATOR BASIC ASSEMBLY, SF	46
-	1	-	1	1	1		2119370-1	RAM, AMP STYLE, SIDE FEED	44
-	1	1	1	1	1		2079383-7	SCR, BHSC, RoHS (M8 X 25)	41
-	1	-	1	1	1		2119645-1	DISC, NUMBERED FA WIRE ADJUSTMENT	40
-	1	-	1	1	1		2119957-1	APPLICATOR SHIM PACK	39
-	1	1	1	1	1		2119644-1	RAM WASHER, PRECISION	38
-	1	1	1	1	1		2119085-1	FA HEAD, ATLANTIC STYLE	37
-	1	-	1	1	1		2119092-1	BOLT, ADJUSTMENT	35
-	1	1	1	1	1		1752356-3	SUPPORT, TERMINAL	34
-	2	2	2	2	2		2079383-5	SCR, BHSC, RoHS (M4 X 20)	33
-	1	1	1	1	1		2161328-1	HEX HEAD, FLANGED, M5 X 8mm LONG	32
-	1	1	1	1	1		1320908-3	SPACER, STRIP GUIDE	30
-	1	1	1	1	1		2119959-1	ASSEMBLY, STRIP GUIDE	29
-	1	1	1	1	1		455888-5	SPACER, CRIMPER	28
-	1	1	1	1	1		1320928-2	STRIP GUIDE	24
-	1	1	1	1	1		2168083-2	SCR, SKT HD CAP, RoHS, M4 X 8.0	21
-	2	2	2	2	2		1-18028-2	WASHER, FLAT, REG M4	20
-	1	1	1	1	1		2119533-1	STRIPPER, SIDE FEED	19
-	1	1	1	1	1		2119806-1	INSERT, SHEAR	13
-	1	1	1	1	1		3-22280-3	SPRING, COMPRESSION	12
-	1	1	1	1	1		1-356885-4	STOP, SHEAR	11
-	1	1	1	1	1		2119805-1	SHEAR HOLDER, FRONT	10
-	1	1	1	1	1		1-318707-5	FLOATING SHEAR, FRONT	9
-	1	1	1	1	1		5-1803249-0	ANVIL, COMBINATION	8
-	1	1	1	1	1		2-240641-0	SPACER	7
-	-	-	-	-	-		-	-	6
-	1	1	1	1	1		2119781-1	DEPRESSOR, SHEAR	5
-	1	1	1	1	1		238011-3	BLOCK, CRIMPER SPACER	4
-	1	1	1	1	1		8-1803019-3	CRIMPER, INSULATION O	3
-	-	-	-	-	-		-	-	2
-	1	1	1	1	1		2-1673600-5	CRIMPER, WIRE	1
-77	-7	-6	-5	-2	-1		PART NO	DESCRIPTION	ITEM NO

DIMENSIONS:		TOLERANCES UNLESS OTHERWISE SPECIFIED:		OWN: JH_ZHAO 07JUL2016		CHK: G_BAILLEY 07JUL2016		APVD: J_DEGRANGE 07JUL2016		NAME: Ocean Side Feed Applicator	
mm		0 PLC ±		APPLICATOR SPEC		SIZE: A1		CAGE CODE: 00779		DRAWING NO: 2836397	
MATERIAL:		FINISH:		WEIGHT:		SCALE: 1:2		SHEET: 1 of 4		REV: C	

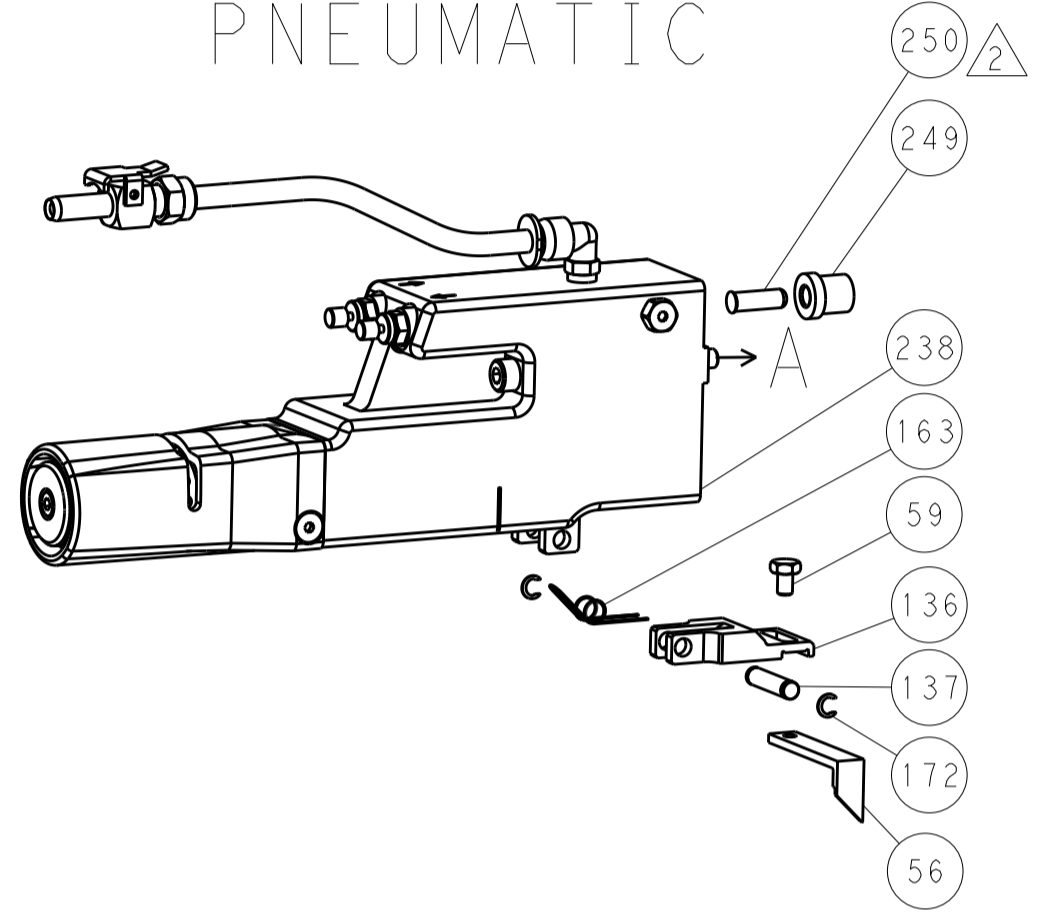
Customer Accessible Production Drawing

LOC		DIST		REVISIONS			
A	66	P	LTM	DESCRIPTION	DATE	OWN	APVD
		-	-	SEE SHEET 1	-	-	-

FEED TYPE MECHANICAL



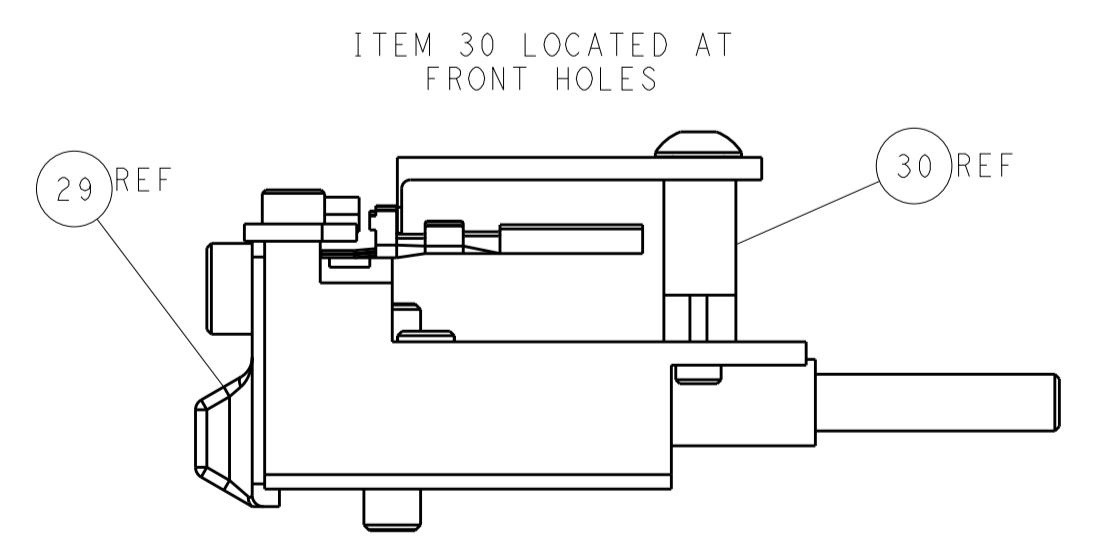
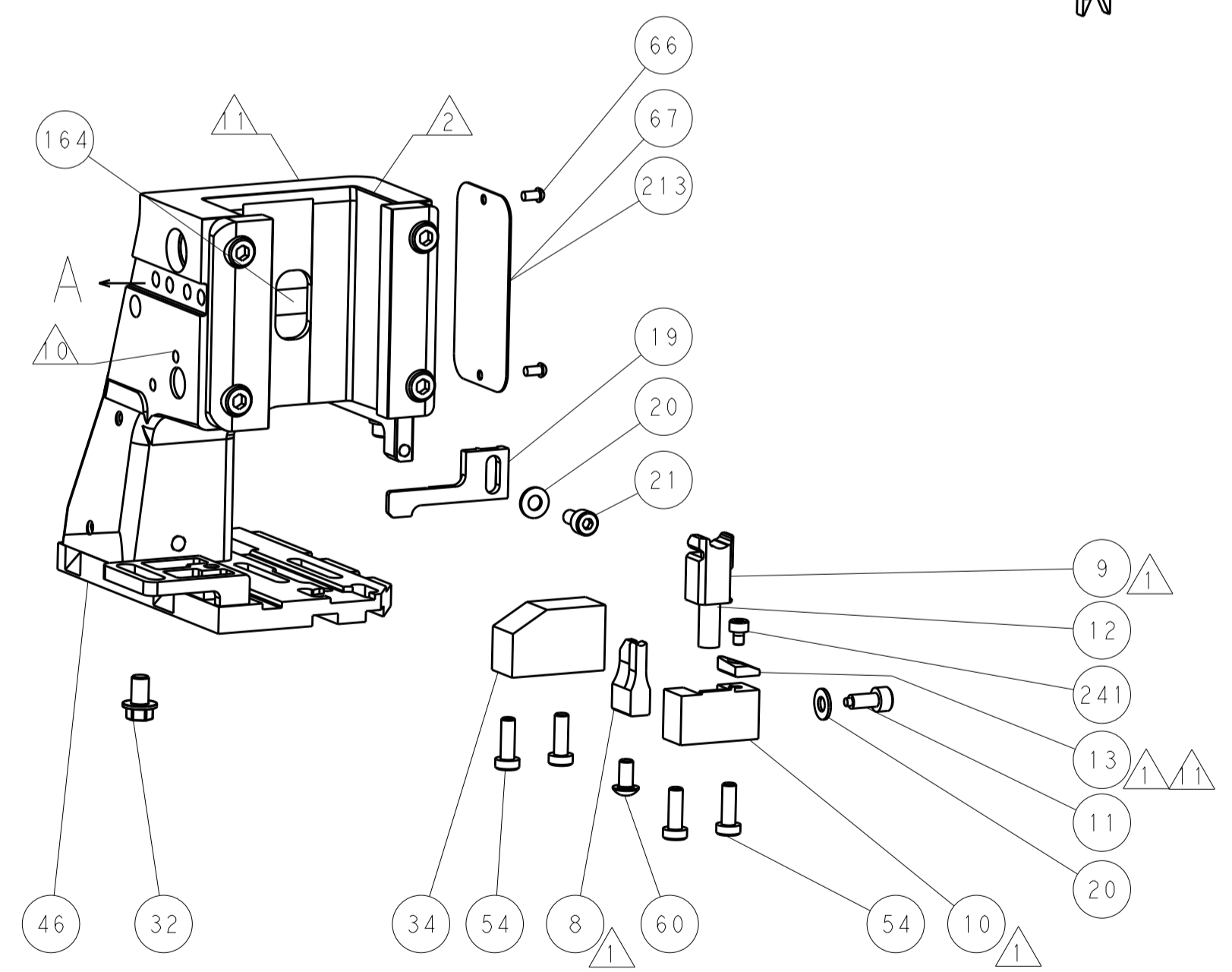
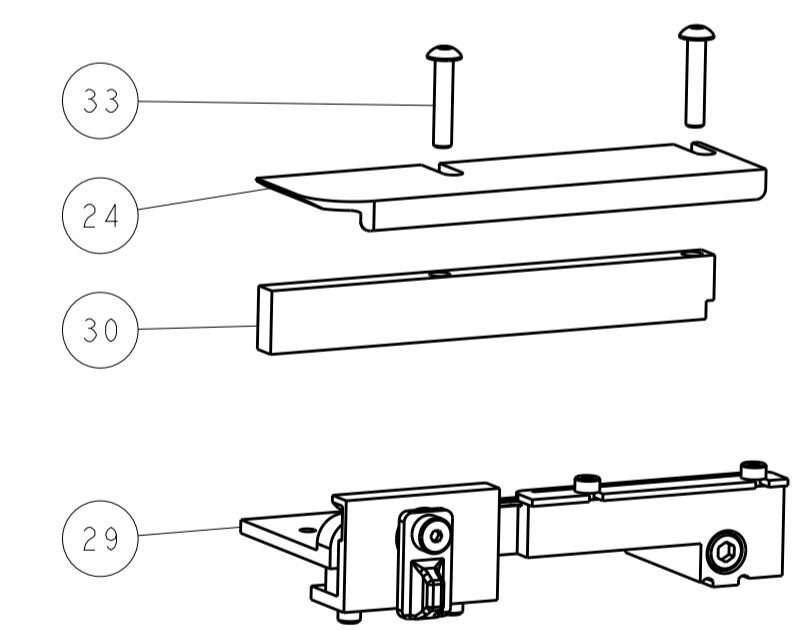
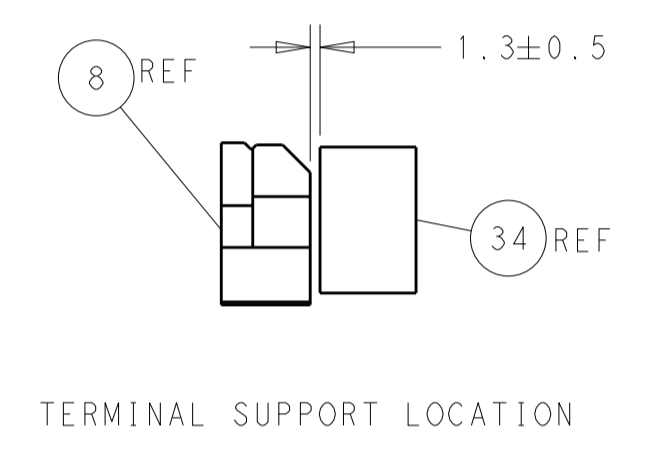
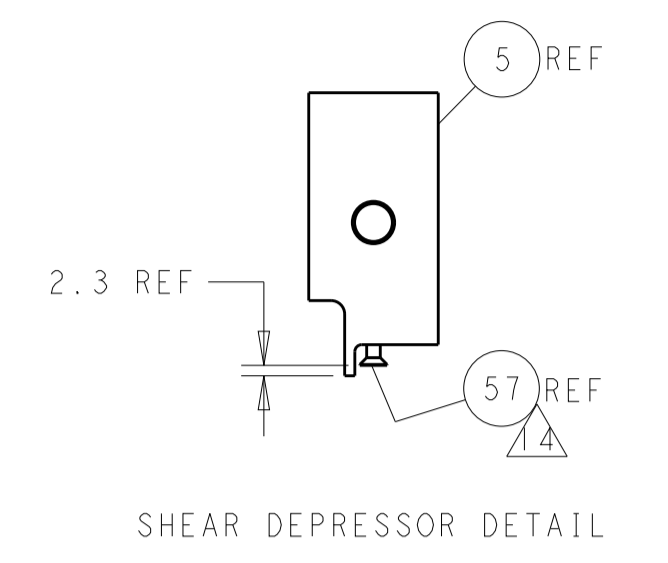
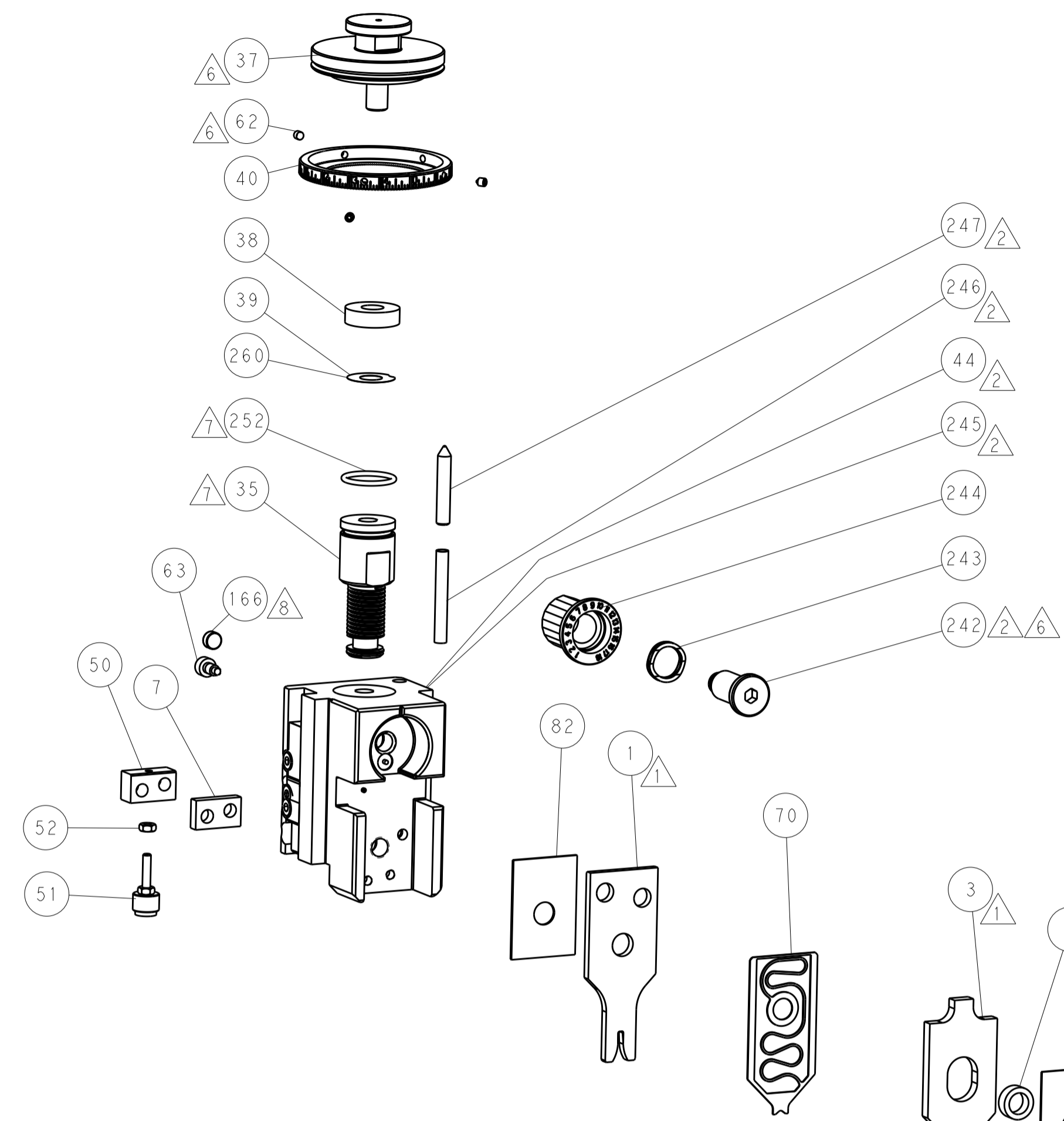
PNEUMATIC



SERVO LATCH PLATE



CAM POSITIONS



ATLANTIC VERSION
 Shown on sheets 1 of 4 & 2 of 4
 (Pacific version shown on sheets 3 of 4 & 4 of 4)

DIMENSIONS:		TOLERANCES UNLESS OTHERWISE SPECIFIED:		OWN: M. ZHAO 07JUL2016		TE Connectivity	
mm	0 PLC ±	1 PLC ±	2 PLC ±	3 PLC ±	4 PLC ±	Harrisburg, PA 17105-3608	
MATERIAL:		FINISH:		CHK: G. BAILEY 07JUL2016		NAME: Ocean Side Feed Applicator	
				APVD: J. DEGRANGE 07JUL2016		PRODUCT SPEC:	
				APPLICATION SPEC:		SIZE: CAGE CODE: DRAWING NO:	
				WEIGHT:		RESTRICTED TO:	
				Customer Accessible Production Drawing		SCALE: 1:2 SHEET 2 OF 4 REV C	

PACIFIC VERSION TERMINATOR INTERFACE ADAPTER	PART NUMBER	REVISION	DESCRIPTION	FEED TYPE	APPLICATOR STYLE CONVERSION CHART						
					CONVERT TO	PART NUMBERS REQUIRED					
	2-2836397-1	C	FINE CRIMP HEIGHT ADJUST	MECHANICAL	PNEUMATIC FEED	2119950-1	1338683-8	5-18022-5	2119641-2	2119799-1	2063440-1
					SERVO LATCH PLATE	2119951-1	-	8-2836397-5	1901094-3	-	2168400-6 (QUANTITY 2)
					SMART APPLICATOR	2161326-1	-	8-2836397-4	-	-	-
	2-2836397-2	C	FINE CRIMP HEIGHT ADJUST	PNEUMATIC	MECHANICAL FEED	2119949-1	1338683-8	5-18022-5	2119653-2	-	-
					SERVO LATCH PLATE	2119951-1	-	8-2836397-5	1901094-3	-	2168400-6 (QUANTITY 2)
					SMART APPLICATOR	2161326-1	-	8-2836397-4	-	-	-
	2-2836397-5	C	FINE CRIMP HEIGHT ADJUST	SERVO LATCH PLATE	MECHANICAL FEED	2119949-1	1338683-8	5-18022-5	2119653-2	-	-
					PNEUMATIC FEED	2119950-1	1338683-8	5-18022-5	2119641-2	2119799-1	2063440-1
	2-2836397-7	C	FINE CRIMP HEIGHT ADJUST	NONE	-	-	-	-	-	-	-
	7-2836397-7	B	CRIMP TOOLING KIT	-	-	-	-	-	-	-	-

APPLICATOR DATA		
CRIMP	SIZE	TYPE
WIRE	1.83 mm [.072]	F
INSUL	3.50 mm [.138]	O
APPLICATOR INSTRUCTIONS 408-10389		

TERMINAL DATA: YAZAKI TERMINAL YAZAKI CRIMP SPECIFICATION	
TERMINAL NAME: SWP TYPE TERMINAL M	
WIRE STRIP LENGTH 4.50-5.50 mm [1.77-.217 IN]	INSULATION DIAMETER RANGE Ø 1.2
TERMINAL APPLICATION SPECIFICATION 7114-1471 Rev -	
TERMINALS APPLIED	
TE TERMINAL	YAZAKI TERMINAL
1949769-1	7114-1471
1949769-2	7114-1471-08
1949769-3	7114-1571-08
TE SEAL	YAZAKI SEAL
1949770-1	7157-7812
CABLE DIAMETER Ø 1.30-2.10	

WIRE SIZE	CRIMP HEIGHT mm [INCH]	CRIMP HEIGHT REFERENCE SETTING
0.85mm2	1.20 +/- 0.05 [1.047 +/- .002]	5.6
0.75mm2	1.20 +/- 0.05 [1.047 +/- .002]	5.6
0.50mm2	1.10 +/- 0.05 [1.043 +/- .002]	6.8
0.30mm2	1.05 +/- 0.05 [1.041 +/- .002]	7.3

- 1. RECOMMENDED SPARE PARTS
- 2. GREASE BEARING SURFACES LIGHTLY
- 3. LUBRICATE DAILY PER THE APPLICATOR INSTRUCTION SHEET SUPPLIED WITH THE APPLICATOR.
- 4. APPLICATOR SPECIFIC DATA TO BE ENTERED INTO BLANK MEMORY CHIP AT ASSEMBLY. SEE BELOW FOR PART NUMBER:
 MECHANICAL FEED WITH "SMART APPLICATOR" CONVERSION: 8-2836397-4
 PNEUMATIC FEED WITH "SMART APPLICATOR" CONVERSION: 8-2836397-4
 SERVO FEED WITH "FINE CRIMP HEIGHT ADJUST": 8-2836397-5
- 5. ADJUSTMENT OF THE STRIPPER MAY BE REQUIRED WHEN MOVING THE APPLICATOR BETWEEN BENCH AND LEADMAKER APPLICATIONS.
- 6. APPLY PART NUMBER 1-23419-5 LOCTITE TO THREADS OF ITEM 62. APPLY PART NUMBER 2-23419-6 LOCTITE TO THREADS OF ITEM 242.
- 7. GREASE THREADS, GROOVE AND O-RING ON ITEMS 139 & 152.
- 8. MAGNET MUST BE ORIENTED CORRECTLY IN ORDER TO PROPERLY ACTUATE THE COUNTER.
- 9. CRIMP HEIGHT REFERENCE SETTING WAS THE SETTING USED WHEN THE APPLICATOR WAS QUALIFIED AT THE FACTORY. ADJUSTMENT MAY BE NECESSARY WHEN RUNNING APPLICATOR IN THE FIELD.
- 10. SPARE FEED CAM STORAGE LOCATION REFER TO INSTRUCTION SHEET FOR ADDITIONAL INFORMATION.
- 11. TO CONVERT THE APPLICATOR TO A NON-CARRIER CUTTING STYLE, REMOVE ITEM 13 AND ATTACH TO THE LOCATION ON BACK SIDE OF THE HOUSING. REFER TO INSTRUCTION SHEET FOR ADDITIONAL INFORMATION.
- 12. THIS APPLICATOR APPLIES TERMINAL WITH A SEAL.
- 13. APPLY TORO-SEAL IN ALLEN SOCKET TO FILL HOLE AFTER FLAT HD HAS BEEN ADJUSTED TO CORRECT HEIGHT AT QUALIFICATION. APPLY #1-23419-5 LOC-TITE TO THREADS.
- 14. TERMINAL LUBRICANT IS RECOMMENDED.

***WARNING**
 ON INSTALLATION, SET WIRE DISC, ITEM 40 TO LARGEST WIRE SIZE SETTING. USE OF SETTINGS BELOW MINIMUM REQUIRED CRIMP HEIGHT SETTING WILL CAUSE DAMAGE TO CRIMP TOOLING.

-	1	1	1	1	2119782-1	FINE ADJUST HEAD ASM, PACIFIC STYLE	251
-	-	-	1	-	2119640-1	PUSH ROD, AIR FEED	250
-77	-27	-25	-22	-21	PART NO	DESCRIPTION	ITEM NO

PACIFIC VERSION
 Shown on sheets 3 of 4 & 4 of 4
 (Atlantic version shown on sheets 1 of 4 & 2 of 4)

SET UP GAUGE	LOC	DIST	REVISIONS					
2119599-1	A	66	P	LTN	DESCRIPTION	DATE	OWN	APVD
-	-	-	-	-	SEE SHEET 1	-	-	-

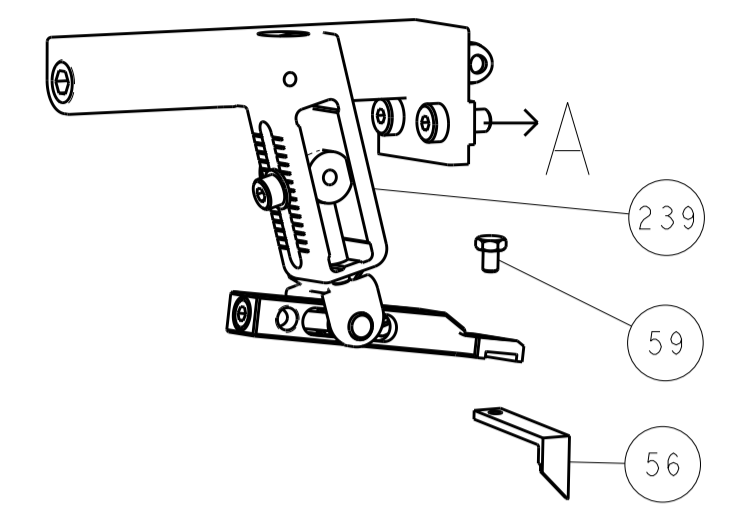
-	-	-	1	-	2079988-1	BUSHING, LCH5-12, MISUMI	249
-	1	1	1	1	1-22279-3	SPRING, COMPRESSION	246
-	1	1	1	1	2119082-2	CAM, SNAIL, INSULATION ADJUSTMENT	244
-	1	1	1	1	2079764-1	WASHER, WAVE SPRING, CREST-TO-CREST	243
6	-	1	1	1	2119083-1	RETAINER, INSULATION DIAL	242
-	1	1	1	1	7-18023-7	SCR, SKT HD CAP M3 X 4.0	241
-	-	2	-	-	2168400-6	SHCS, LOW HEAD, RoHS, M5 X 16	240
-	-	-	-	1	2119580-1	MECHANICAL FEED ASSEMBLY	239
-	-	-	1	-	2063440-1	AIR FEED MODULE	238
-	-	1	-	-	2119740-2	TAG, IDENTIFICATION	213
-	-	1	-	-	1901094-3	SPACER, FEEDER	198
-	-	-	2	-	21045-3	RING, RETAIN, EXTERN, 3/16 CRESCENT	172
8	-	1	1	1	994969-1	MAGNET, RARE EARTH HIGH ENERGY	166
-	REF	REF	REF	REF	994970-2	COUNTER, MAGNETIC	164
-	-	-	1	-	240638-1	SPRING, FEED FINGER	163
7	-	1	1	1	8-21084-1	O-RING, .801 ID, .070 DIA. MAT.	152
-	-	-	1	-	2119641-2	FEED CAM, AIR FEED	151
-	1	1	1	1	2119798-2	DETENT PIN	145
-	1	1	1	1	2079383-8	SCR, BHSC, RoHS (M4 X 16)	144
-	4	4	4	4	2168400-5	SHCS, LOW HEAD, RoHS, M4 X 20	143
-	-	-	-	1	2119653-2	FEED CAM, POST FEED	142
-	1	1	1	1	1-2119656-0	APPLICATOR BASIC ASSEMBLY, SF	141
-	1	1	1	1	2119650-1	RAM, ASIAN STYLE, SIDE FEED	140
7	-	1	1	1	2119092-2	BOLT, ADJUSTMENT	139
-	-	-	1	-	3-23627-7	PIN, RETAIN, GRVD, 3/16 X .854	137
-	-	-	1	-	2119799-1	HOLDER, FEED FINGER, AF	136
-	-	REF	-	-	SEE NOTE 4	MEMORY CHIP, PROGRAMMED	135
-	-	1	-	-	1633743-1	SERVO FEED LATCH ASM	133
-	-	REF	-	-	2119944-1	FEED FINGER ASSEMBLY, SF	117
4	-	1	1	1	2119955-1	ASSY, LUBRICATOR, SIDE FEED	113
-	1	1	1	1	455888-7	SPACER, CRIMPER	82
-	1	1	1	1	2119956-1	DOCUMENTATION PACKAGE	71
-	1	1	1	1	2119791-5	DEPRESSOR, WIRE	70
-	1	-	1	1	2119740-1	TAG, IDENTIFICATION	67
-	2	2	2	2	2168078-1	SCREW, DRIVE, RH, RoHS, 2 x .188	66
6	-	1	1	1	2119793-1	LIMITER, ADJUSTMENT BOLT	63
-	3	3	3	3	992763-5	SCR, SET, SOC, CONE POINT, M3 x 4.0	62
-	-	-	1	1	5-18022-5	SCR, HEX HD CAP, M4 X 6.0	59
3	-	1	1	1	985575-3	SCR, FLT SKT HD CAP M3 X 10.0	57
-	-	-	1	1	1338683-8	FEED PAWL	56
-	2	2	2	2	2168083-8	SCR, SKT HD CAP, RoHS, M4 X 16	53
-	1	1	1	1	5018030-1	NUT, HEX, REG, RoHS, M3	52
-	1	1	1	1	811242-5	BUMPER, HOLD DOWN	51
-	1	1	1	1	690753-2	SPACER, TONKER	50
-	-	-	1	2	18023-9	SCR, SKT HD CAP M4 X 6.0	49
-	-	-	-	1	2119652-1	FEED CAM, PRE FEED	48
-	1	1	1	1	2079383-7	SCR, BHSC, RoHS (M8 X 25)	41
-	1	1	1	1	2119645-1	DISC, NUMBERED FA WIRE ADJUSTMENT	40
-	1	1	1	1	2119957-1	APPLICATOR SHIM PACK	39
-	1	1	1	1	2119644-1	RAM WASHER, PRECISION	38
-	1	1	1	1	1752356-3	SUPPORT, TERMINAL	34
-	2	2	2	2	2079383-5	SCR, BHSC, RoHS (M4 X 20)	33
-	1	1	1	1	2161328-1	HEX HEAD, FLANGED, M5 x 8mm LONG	32
-	1	1	1	1	1320908-3	SPACER, STRIP GUIDE	30
-	1	1	1	1	2119959-1	ASSEMBLY, STRIP GUIDE	29
-	1	1	1	1	455888-5	SPACER, CRIMPER	28
-	1	1	1	1	1320928-2	STRIP GUIDE	24
-	1	1	1	1	2168083-2	SCR, SKT HD CAP, RoHS, M4 X 8.0	21
-	2	2	2	2	1-18028-2	WASHER, FLAT, REG M4	20
-	1	1	1	1	2119533-1	STRIPPER, SIDE FEED	19
11	-	1	1	1	2119806-1	INSERT, SHEAR	13
-	1	1	1	1	3-22280-3	SPRING, COMPRESSION	12
-	1	1	1	1	1-356885-4	STOP, SHEAR	11
-	1	1	1	1	2119805-1	SHEAR HOLDER, FRONT	10
1	-	1	1	1	1-318707-5	FLOATING SHEAR, FRONT	9
1	1	1	1	1	5-1803249-0	ANVIL, COMBINATION	8
-	1	1	1	1	2-240641-0	SPACER	7
-	-	-	-	-	-	-	6
-	1	1	1	1	2119781-1	DEPRESSOR, SHEAR	5
-	1	1	1	1	238011-3	BLOCK, CRIMPER SPACER	4
1	1	1	1	1	8-1803019-3	CRIMPER, INSULATION O	3
-	-	-	-	-	-	-	2
1	1	1	1	1	2-1673600-5	CRIMPER, WIRE	1
-77	-27	-25	-22	-21	PART NO	DESCRIPTION	ITEM NO

DIMENSIONS:		TOLERANCES UNLESS OTHERWISE SPECIFIED:		DRAWING NO	
mm	0 PLC ±	1 PLC ±	2 PLC ±	3 PLC ±	4 PLC ±
	ANGLES ±	FINISH ±			
MATERIAL		FINISH		WEIGHT	
				A1 00779	
				Customer Accessible Production Drawing	
				SCALE 1:2 SHEET 3 OF 4 REV C	

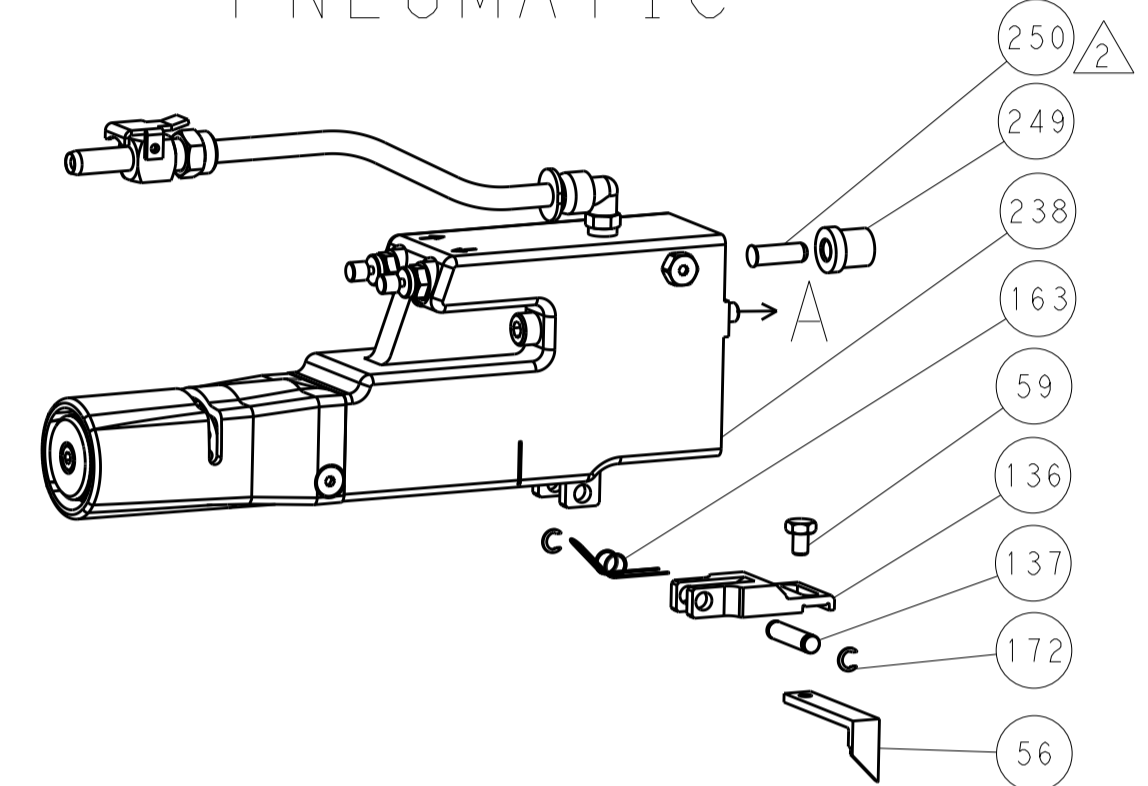
STE TE Connectivity
 Harrisburg, PA 17105-3608
Ocean Side Feed
 Applicator

LOC		DIST		REVISIONS			
A	66	P	LTM	DESCRIPTION	DATE	OWN	APVD
		-	-	SEE SHEET 1	-	-	-

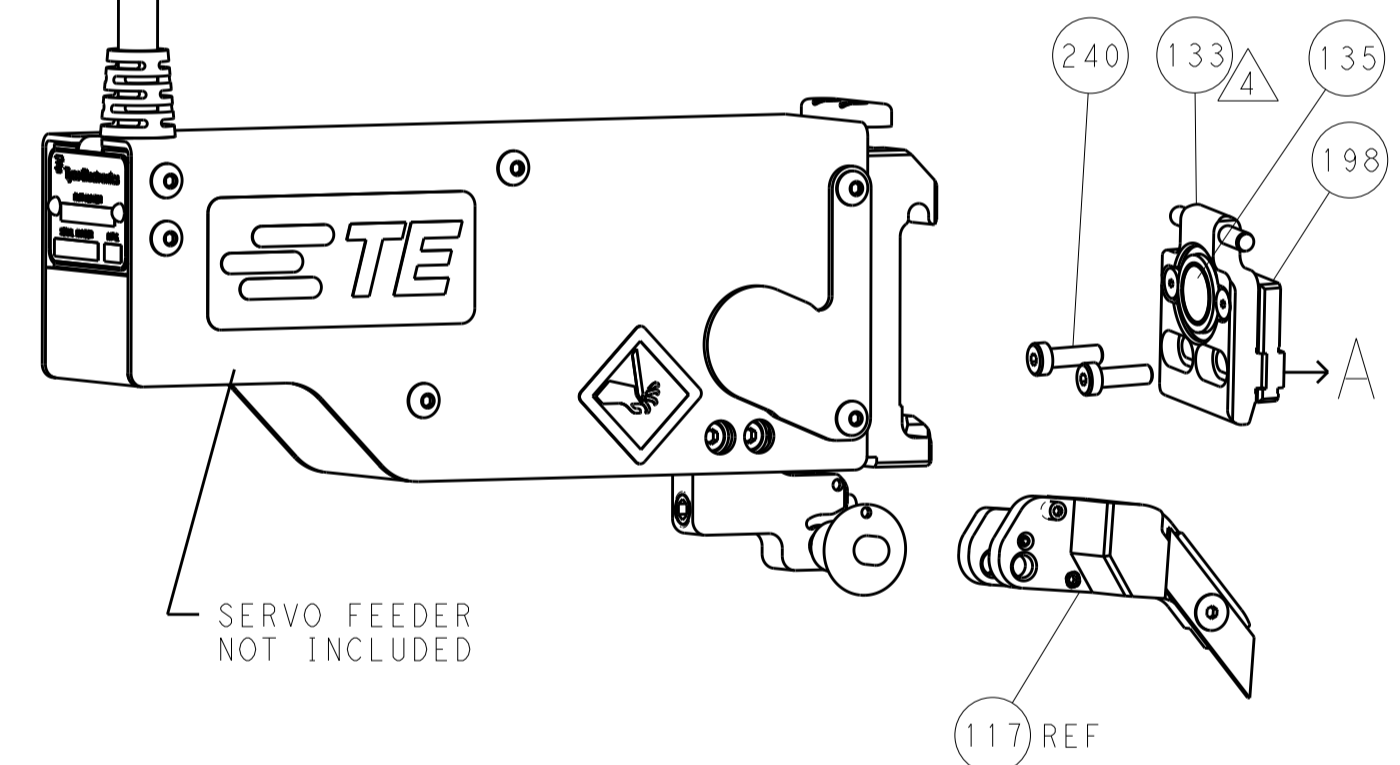
FEED TYPE MECHANICAL



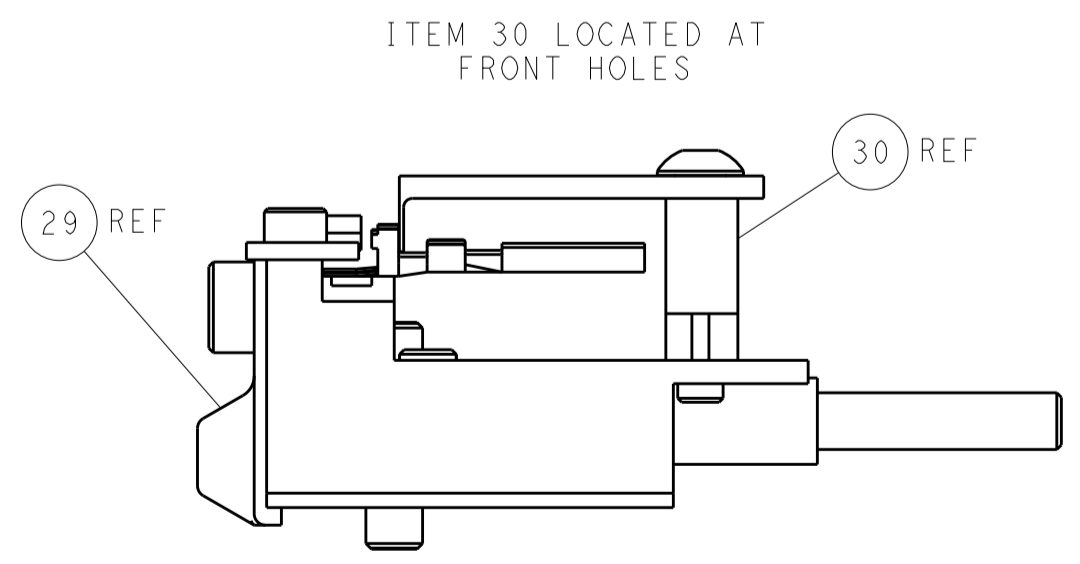
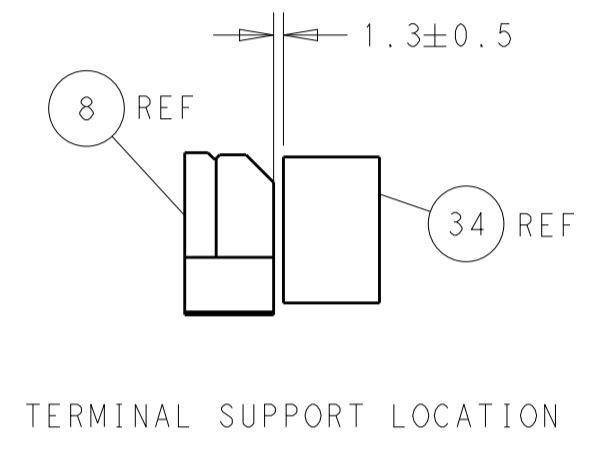
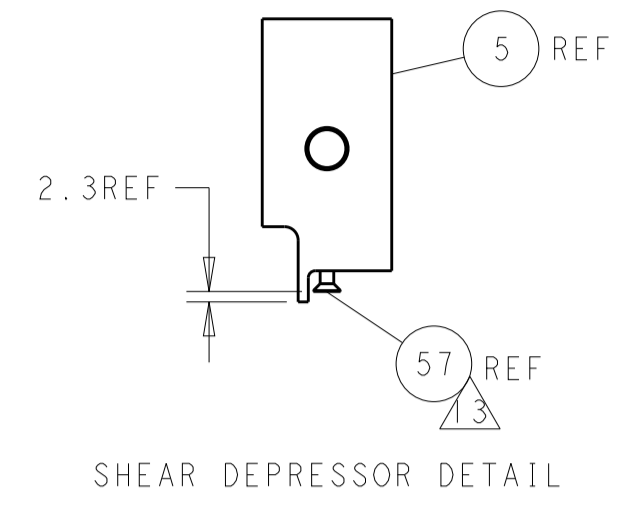
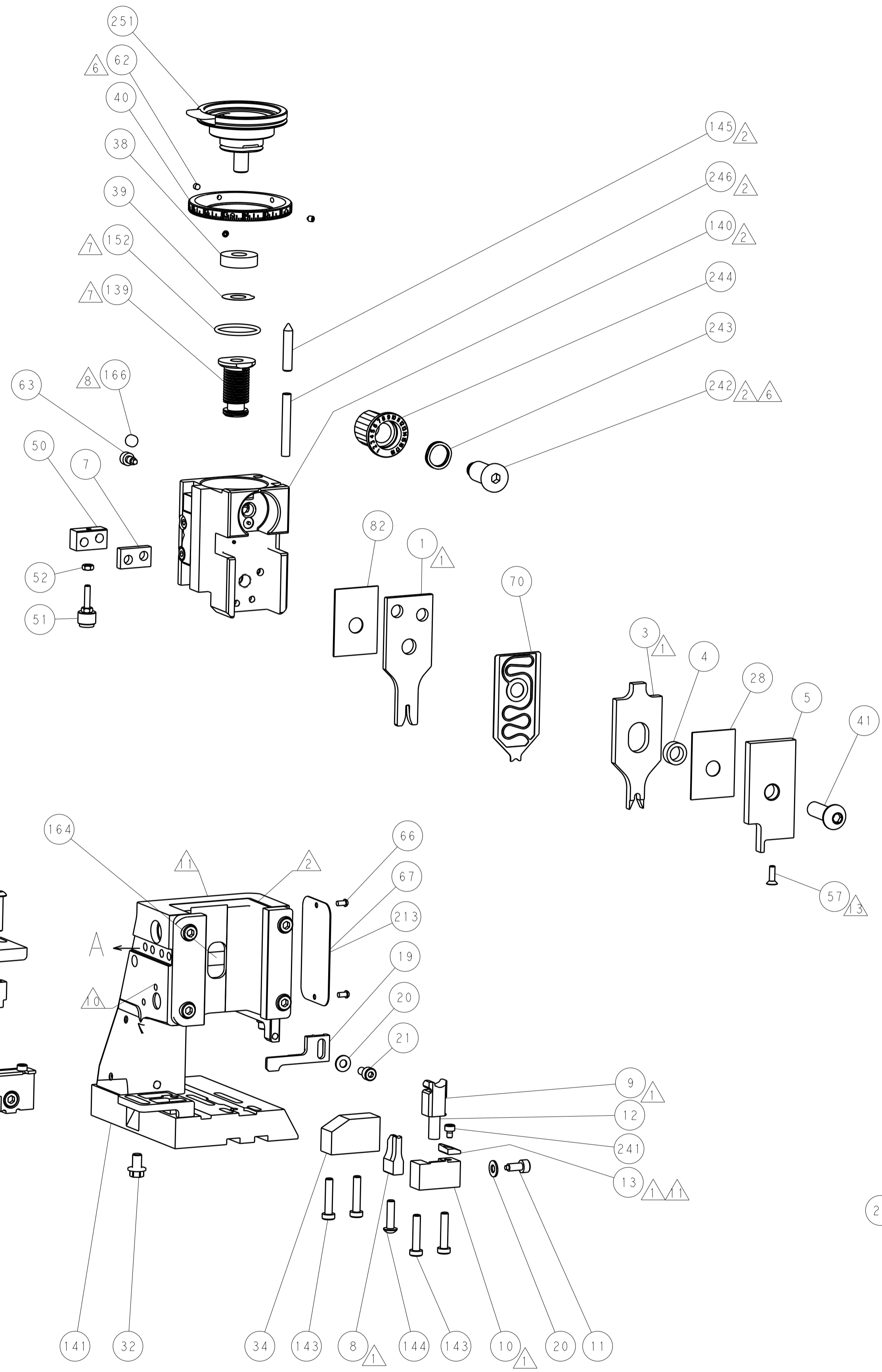
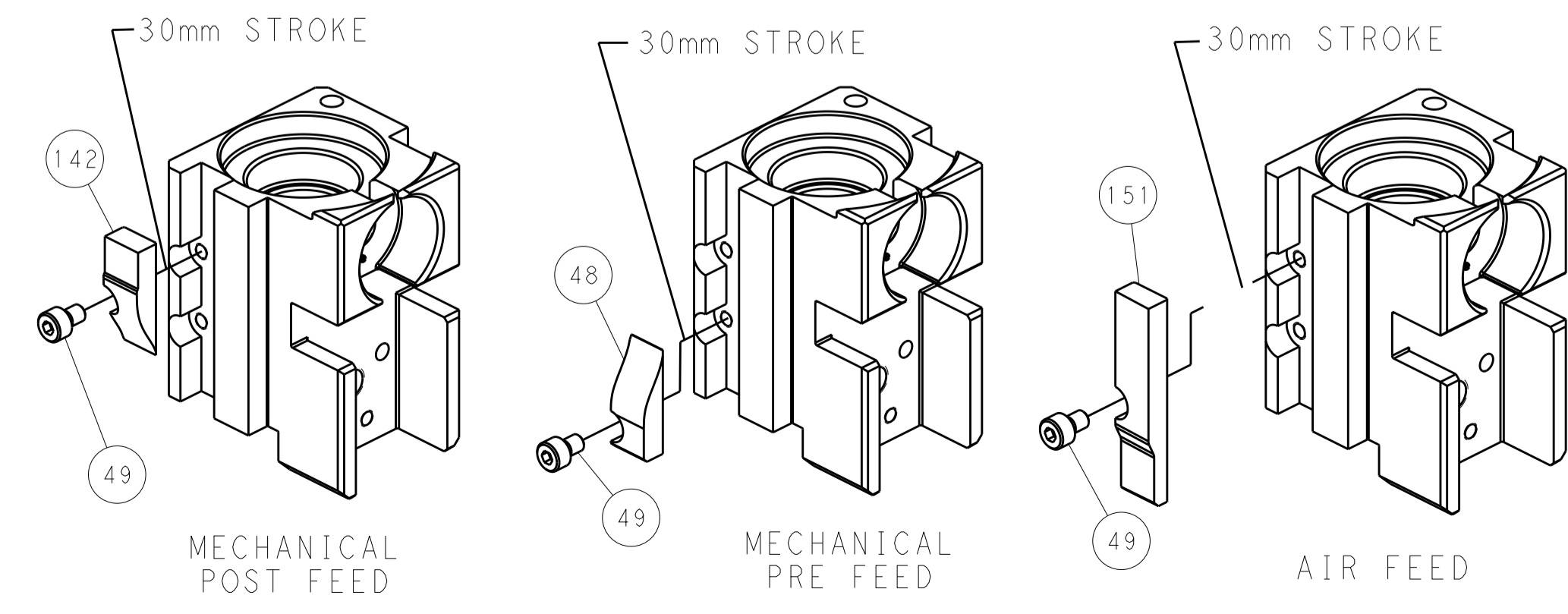
PNEUMATIC



SERVO LATCH PLATE



CAM POSITIONS



FEED TRACK POSITION GUIDE BY INSULATION BARREL

PACIFIC VERSION
 Shown on sheets 3 of 4 & 4 of 4
 (Atlantic version shown on sheets 1 of 4 & 2 of 4)

DIMENSIONS:		TOLERANCES UNLESS OTHERWISE SPECIFIED:		DWG: M_ZHAO 07JUL2016		NAME: TE Connectivity	
mm	0 PLC ±	1 PLC ±	2 PLC ±	3 PLC ±	4 PLC ±	Harrisburg, PA 17105-3608	
MATERIAL:		FINISH:		CHK: G_BAILEY 07JUL2016		PRODUCT SPEC:	
				APVD: J_DEGRANGE 07JUL2016		APPLICATION SPEC:	
				WEIGHT:		SIZE: CAGE CODE: DRAWING NO:	
				Customer Accessible Production Drawing		A1 00779 C=2836397	
				SCALE: 1:2		SHEET 4 OF 4 REV C	