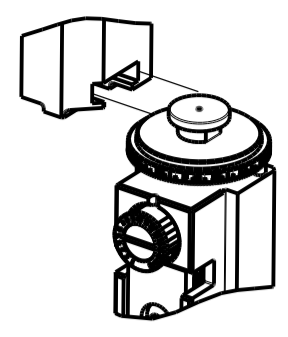


| PART NUMBER | REVISION | DESCRIPTION                     | FEED TYPE |
|-------------|----------|---------------------------------|-----------|
| 2836223-2   | C        | FINE CRIMP HEIGHT ADJUST        | PNEUMATIC |
| 7-2836223-2 | C        | PNEUMATIC AND CRIMP TOOLING KIT | PNEUMATIC |
| 7-2836223-7 | A        | CRIMP TOOLING KIT               | -         |

ATLANTIC VERSION TERMINATOR INTERFACE ADAPTER



| APPLICATOR DATA |                |      |
|-----------------|----------------|------|
| CRIMP           | SIZE           | TYPE |
| WIRE            | 2.54 mm [.100] | F    |
| INSUL           | 3.55 mm [.140] | F    |

APPLICATOR INSTRUCTIONS  
408-35042

| TERMINAL DATA: TE TERMINAL                  |                              | TE CRIMP SPECIFICATION |                |
|---|------------------------------|------------------------|----------------|
| TERMINAL NAME: .250 SERIES FLAG FASTON REC. |                              |                        |                |
| WIRE STRIP LENGTH                           | INSULATION DIAMETER RANGE    |                        |                |
| 5.50-6.50 mm [.217-.256 IN]                 | Ø2.00-3.30 mm [.079-.130 IN] |                        |                |
| TERMINAL APPLICATION SPECIFICATION          | (A)114-20088                 |                        |                |
| TERMINALS APPLIED                           |                              |                        |                |
| TE TERMINAL                                 | TE TERMINAL                  | TE TERMINAL            | TE TERMINAL    |
| (A) 280050-1                                | (A) 280050-2                 | (A) 280050-3           | (A) 280050-7   |
| (A) 1-280050-2                              | (A) 1-280050-3               | (A) 2-280050-1         | (A) 4-280050-1 |
| (A) 4-280050-2                              | (A) 4-280050-4               |                        |                |

| TERMINAL DATA: TE TERMINAL         |                              | TE CRIMP SPECIFICATION |             |
|------------------------------------|------------------------------|------------------------|-------------|
| TERMINAL NAME: .250 LIF FASTON     |                              |                        |             |
| WIRE STRIP LENGTH                  | INSULATION DIAMETER RANGE    |                        |             |
| 3.50-4.50 mm [.138-.177 IN]        | Ø2.00-3.80 mm [.079-.150 IN] |                        |             |
| TERMINAL APPLICATION SPECIFICATION | (B)114-19025                 |                        |             |
| TERMINALS APPLIED                  |                              |                        |             |
| TE TERMINAL                        | TE TERMINAL                  | TE TERMINAL            | TE TERMINAL |
| (B) 100644-4                       |                              |                        |             |

| WIRE SIZE | CRIMP HEIGHT mm [INCH]     | CRIMP HEIGHT REFERENCE SETTING |
|-----------|----------------------------|--------------------------------|
| 1.50mm2   | 1.55+/-0.05 [.061+/-0.002] | 6.1                            |
| 1.00mm2   | 1.47+/-0.05 [.058+/-0.002] | 6.9                            |
| 0.75mm2   | 1.40+/-0.05 [.055+/-0.002] | 7.5                            |
| 0.50mm2   | 1.32+/-0.05 [.052+/-0.002] | 8.3                            |

- 1 RECOMMENDED SPARE PARTS
- 2 REFER TO SUPPLIED INSTRUCTION SHEET FOR CLEANING, LUBRICATION AND STORAGE OF APPLICATOR.
- 3 APPLY PART NUMBER 2-23419-6 LOCTITE TO THREADS OF ITEM 242.
- 4 CRIMP HEIGHT REFERENCE SETTING WAS THE SETTING USED WHEN THE APPLICATOR WAS QUALIFIED AT THE FACTORY. ADJUSTMENT MAY BE NECESSARY WHEN RUNNING APPLICATOR IN THE FIELD.
- 5 TERMINAL PITCH IS NOT COMPATIBLE MECHINCAL FEED.
- 6. UNLESS SPECIFIED OTHERWISE TORQUE VALUES SHALL BE USED PER DOCUMENT, 101-35000.
- 7 CUT TO LENGTH AT ASSEMBLY
- 8 QUANTITY OF ITEM 129 IS IN METERS
- 9 TERMINAL LUBRICANT IS RECOMMENDED.

**\*WARNING**  
ON INSTALLATION, SET WIRE DISC TO CRIMP HEIGHT REFERENCE SETTING FOR LARGEST WIRE SIZE. CRIMP HEIGHT REFERENCE SETTINGS GREATER THAN THE VALUE SHOWN MAY CAUSE DAMAGE TO THE CRIMP TOOLING. REFER TO THE INSTRUCTION SHEET FOR PROPER SETUP AND ADJUSTMENTS.

ATLANTIC VERSION  
Shown on sheets 1 of 4 & 2 of 4  
(Pacific version shown on sheets 3 of 4 & 4 of 4)

| LOC | DIST | REVISIONS |               |           |       |
|-----|------|-----------|---------------|-----------|-------|
| A   | 66   | REV       | DATE          | BY        | APP'D |
|     |      | A1        | ECR-17-000558 | 13JAN2017 | RS LZ |
|     |      | A2        | ECR-18-010170 | 29JUN2018 | KH CT |
|     |      | B         | ECR-19-006793 | 28APR2019 | FJ TE |
|     |      | C         | ECR-19-011881 | 29JUL2019 | FJ TE |

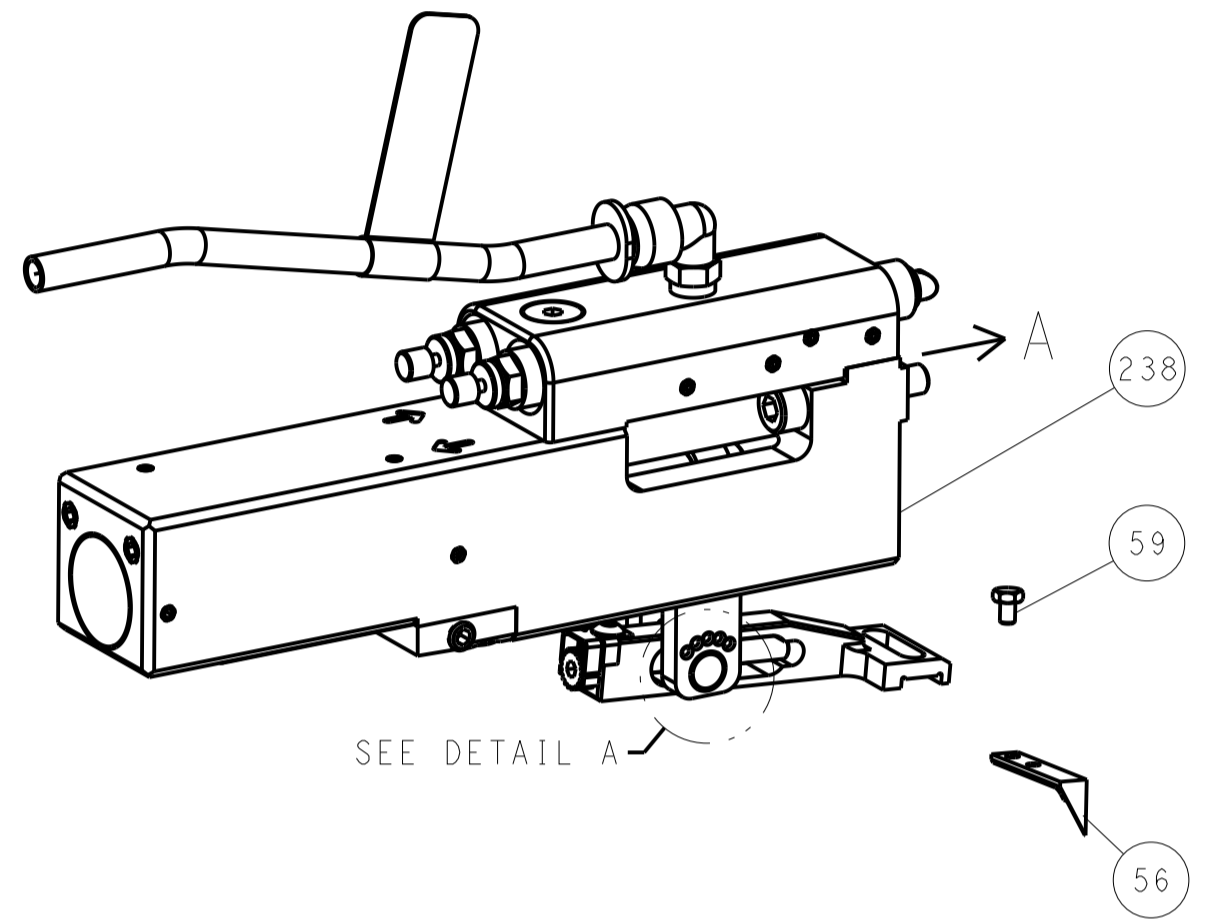
|   |       |     |             |                                     |                                |     |
|---|-------|-----|-------------|-------------------------------------|--------------------------------|-----|
| - | 2     | 2   | 2079383-1   | SCR, BHSC, RoHS (M3 X 8)            | 269                            |     |
| - | 1     | 1   | 1-1633782-3 | FENCE                               | 267                            |     |
| - | 1     | 1   | 2119641-1   | FEED CAM, AIR FEED                  | 248                            |     |
| - | 1     | 1   | 2119082-4   | CAM, SNAIL, INSULATION ADJUSTMENT   | 244                            |     |
| - | 1     | 1   | 2079764-1   | WASHER, WAVE SPRING, CREST-TO-CREST | 243                            |     |
| 3 | -     | 1   | 1           | 2119083-1                           | RETAINER, INSULATION DIAL      | 242 |
| - | 1     | 1   | 2844940-1   | AIR FEED MODULE                     | 238                            |     |
| - | REF   | REF | 994970-2    | COUNTER, MAGNETIC                   | 164                            |     |
| - | 1     | 1   | 2168083-8   | SCR, SKT HD CAP, RoHS, M4 X 16      | 143                            |     |
| - | 1     | 1   | 2217068-1   | BRACKET, AIR BLAST                  | 130                            |     |
| 8 | -     | 1   | 1           | 2030758-3                           | TUBING, POLYURETHANE           | 129 |
| - | 1     | 1   | 986965-8    | NUT, LOCK, HEX, TORQUE (M4)         | 128                            |     |
| - | 1     | 1   | 2168083-3   | SCR, SKT HD CAP, RoHS, M4 X 12.0    | 127                            |     |
| - | 1     | 1   | 986220-3    | CLAMP, CABLE, BLACK                 | 126                            |     |
| - | 1     | 1   | 1-22281-8   | SPRING, COMPRESSION                 | 121                            |     |
| - | 1     | 1   | 1-455888-0  | SPACER, CRIMPER                     | 120                            |     |
| 9 | -     | 1   | 1           | 2119955-1                           | ASSY, LUBRICATOR, SIDE FEED    | 113 |
| - | 1     | 1   | 23238-1     | INSERT, COUPLING                    | 101                            |     |
| - | 1     | 1   | 2844908-1   | SCREW, LOCKING                      | 99                             |     |
| - | 1     | 1   | 2844907-1   | POST, LOCKING                       | 98                             |     |
| - | 1     | 1   | 3-690712-4  | FRONT STRIP GUIDE                   | 96                             |     |
| 7 | -     | 2   | 2           | 1-2168083-3                         | SCR, SKT HD CAP, RoHS, M3 X 16 | 95  |
| - | 1     | 1   | 2168083-6   | SCR, SKT HD CAP, RoHS, M5 X 65      | 93                             |     |
| - | 1     | 1   | 455888-1    | SPACER, CRIMPER                     | 82                             |     |
| - | 1     | 1   | 1803607-3   | DOCUMENTATION PACKAGE               | 71                             |     |
| - | 1     | 1   | 2119791-9   | DEPRESSOR, WIRE                     | 70                             |     |
| - | 1     | 1   | 2119943-1   | WASHER, SPACER                      | 69                             |     |
| - | 1     | 1   | 2119740-1   | TAG, IDENTIFICATION                 | 67                             |     |
| - | 2     | 2   | 2168078-1   | SCREW, DRIVE, RH, RoHS, 2 x .188    | 66                             |     |
| - | 2     | 2   | 2-18032-5   | SCR, SET, FLT PNT, M5 X 20.0        | 61                             |     |
| - | 1     | 1   | 2168083-2   | SCR, SKT HD CAP, RoHS, M4 X 8.0     | 60                             |     |
| - | 1     | 1   | 5-18022-5   | SCR, HEX HD CAP, M4 X 6.0           | 59                             |     |
| - | 1     | 1   | 1338685-3   | PAWL, FEED                          | 56                             |     |
| - | 1     | 1   | 18023-9     | SCR, SKT HD CAP M4 X 6.0            | 49                             |     |
| - | 1     | 1   | 1803583-9   | APPLICATOR BASIC ASSEMBLY, SF       | 46                             |     |
| - | 1     | 1   | 1803515-1   | RAM ASSEMBLY, SF ATLANTIC           | 44                             |     |
| - | 1     | 1   | 1803602-1   | SCR, BHSC, RoHS (M8 X 25)           | 41                             |     |
| - | 2     | 2   | 2079383-8   | SCR, BHSC, RoHS (M4 X 16)           | 33                             |     |
| - | 2     | 2   | 1-2844962-4 | SPACER, CYLINDRICAL, STRIP GUIDE    | 30                             |     |
| - | 1     | 1   | 2844938-1   | PLATE, STRIP GUIDE                  | 29                             |     |
| - | 2     | 2   | 22281-6     | SPRING, COMPRESSION                 | 27                             |     |
| - | 1     | 1   | 356835-1    | LEVER, DRAG RELEASE                 | 26                             |     |
| - | 1     | 1   | 690792-3    | DRAG, STOCK                         | 25                             |     |
| - | 1     | 1   | 1320928-2   | STRIP GUIDE                         | 24                             |     |
| - | 1     | 1   | 980371-4    | SCR, SKT HD SHLDR 5.0 DIA X 6.0     | 23                             |     |
| - | 1     | 1   | 2168083-2   | SCR, SKT HD CAP, RoHS, M4 X 8.0     | 21                             |     |
| - | 4     | 4   | 1-18028-2   | WASHER, FLAT, REG M4                | 20                             |     |
| - | 1     | 1   | 2119533-6   | STRIPPER, SIDE FEED                 | 19                             |     |
| - | 1     | 1   | 3-853720-1  | BLADE, SLUG                         | 15                             |     |
| - | 1     | 1   | 2-853721-1  | BLADE, SLUG                         | 10                             |     |
| - | 1     | 1   | 2-1803012-8 | PLATE, REAR SHEAR                   | 9                              |     |
| - | 1     | 2   | 1           | 1803010-8                           | ANVIL, SPEICAL, COMBINATION    | 8   |
| - | -     | -   | -           | -                                   | 7                              |     |
| - | -     | -   | -           | -                                   | 6                              |     |
| - | -     | -   | -           | -                                   | 5                              |     |
| - | 1     | 1   | 238009-4    | BLOCK, FL CRIMPER SPACER            | 4                              |     |
| - | 1     | 2   | 1           | 6-1803016-3                         | CRIMPER, INSULATION F          | 3   |
| - | 1     | 1   | 455888-5    | SPACER, CRIMPER                     | 2                              |     |
| - | 1     | 2   | 1           | 456407-8                            | CRIMPER, WIRE PREMIUM          | 1   |
| - | 77-72 | -2  | PART NO     | DESCRIPTION                         | ITEM NO                        |     |

|   |  |   |  |
|---|--|---|--|
| <small>THE INFORMATION CONTAINED HEREIN IS UNCLASSIFIED EXCEPT WHERE SHOWN OTHERWISE. IT IS SUBJECT TO CHANGE AND WITHOUT WARRANTY OF ACCURACY OR COMPLETENESS. IT IS THE USER'S RESPONSIBILITY TO CONTACT THE ISSUING ORGANIZATION SHOULD BE CONTACTED FOR THE LATEST VERSION.</small> |  | DWN<br>CH HUANG 04MA42016<br>CHK<br>L ZHANG 04MA42016<br>APVD<br>JJ GUO 04MA42016                         | TE Connectivity<br>Harrisburg, PA 17105-3608   |
| DIMENSIONS:<br>mm<br>   |  | TOLERANCES UNLESS OTHERWISE SPECIFIED:<br>0 PLC ±<br>1 PLC ±<br>2 PLC ±<br>3 PLC ±<br>4 PLC ±<br>ANGLES ± | PRODUCT SPEC<br>APPLICATION SPEC<br>SIZE CAGE CODE DRAWING NO<br>A1 00779 C=2836223<br>RESTRICTED TO |
| MATERIAL<br>FINISH  |  | WEIGHT<br>Customer Accessible Production Drawing  | SCALE 1:2 SHEET 1 OF 4 REV C   |

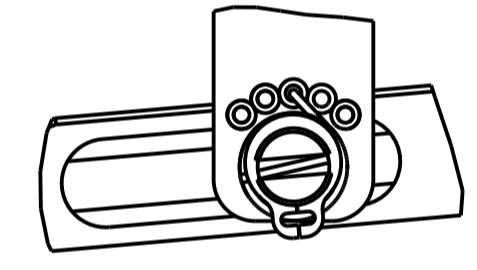
| LOC |    | DIST |     | REVISIONS   |      |     |      |
|-----|----|------|-----|-------------|------|-----|------|
| A   | 66 | P    | LTM | DESCRIPTION | DATE | DMN | APVD |
|     |    | -    | -   | SEE SHEET 1 | -    | -   | -    |

### FEED TYPE

#### PNEUMATIC

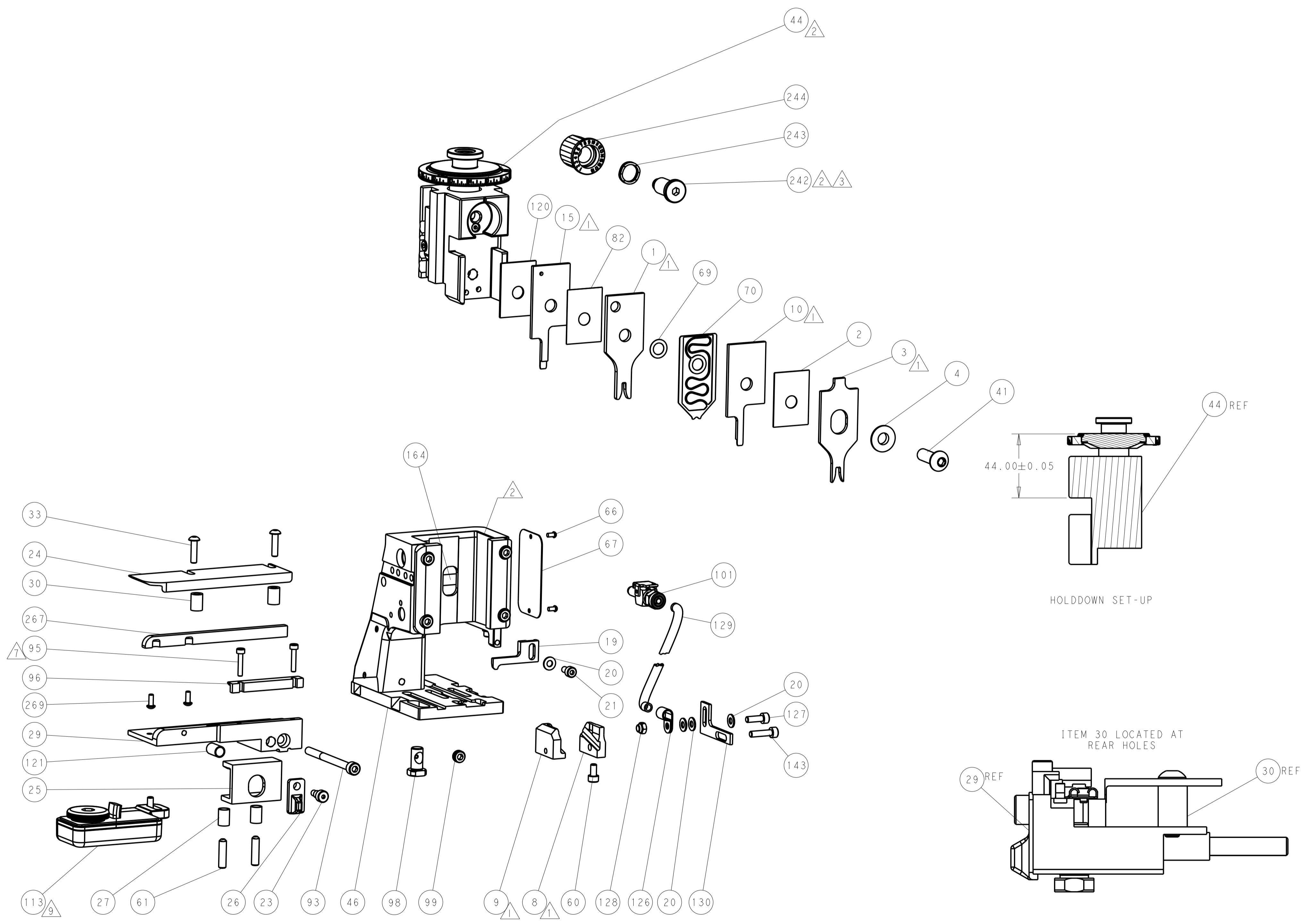
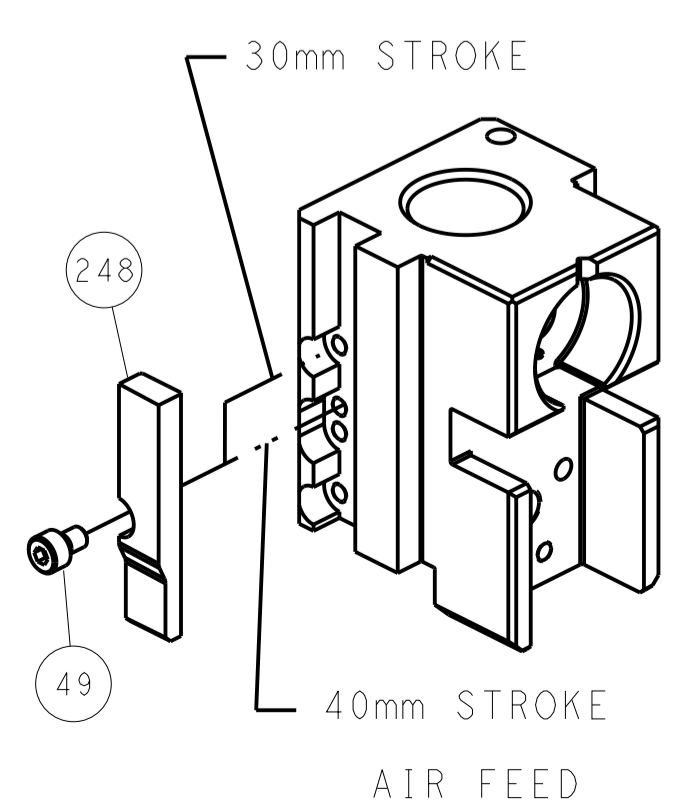


#### FEED SPRING SETTING POSITION (SHOWN FROM REAR SIDE)



DETAIL A

### CAM POSITION



FEED TRACK POSITION GUIDE BY INSULATION AND BODY

**ATLANTIC VERSION**  
 Shown on sheets 1 of 4 & 2 of 4  
 (Pacific version shown on sheets 3 of 4 & 4 of 4)

|             |         |  |         |  |         |  |  |
|-------------|---------|--|---------|--|---------|--|--|
| DIMENSIONS: |         | TOLERANCES UNLESS OTHERWISE SPECIFIED: |         | DWG: H. HUANG 04MA42016                |         | TE Connectivity                                    |  |
| mm          | 0 PLC ± | 1 PLC ±                                | 2 PLC ± | 3 PLC ±                                | 4 PLC ± | Harrisburg, PA 17105-3608                          |  |
| MATERIAL:   |         | FINISH:                                |         | CHK: L. ZHANG 04MA42016                |         | NAME: Ocean Side Feed Applicator                   |  |
|             |         |  |         | APVD: H. GUO 04MA42016                 |         | RESTRICTED TO:                                     |  |
|             |         |  |         | PRODUCT SPEC:                          |         | SIZE: CAGE CODE: DRAWING NO:                       |  |
|             |         |  |         | APPLICATION SPEC:                      |         | A11 00779 ©=2836223                                |  |
|             |         |  |         | WEIGHT:                                |         | SCALE: 1:2 SHEET 2 OF 4 REV C                      |  |
|             |         |  |         | Customer Accessible Production Drawing |         | SHEETS 3 & 4 ARE NOT REQUIRED FOR ATLANTIC VERSION |  |

| PART NUMBER | REVISION | DESCRIPTION              | FEED TYPE |
|-------------|----------|--------------------------|-----------|
| 2-2836223-2 | C        | FINE CRIMP HEIGHT ADJUST | PNEUMATIC |
| 7-2836223-7 | A        | CRIMP TOOLING KIT        | -         |

PACIFIC VERSION TERMINATOR  
INTERFACE ADAPTER



| APPLICATOR DATA |                  |      |
|-----------------|------------------|------|
| CRIMP           | SIZE             | TYPE |
| WIRE            | 2.54 mm [ .100 ] | F    |
| INSUL           | 3.55 mm [ .140 ] | F    |

APPLICATOR INSTRUCTIONS  
408-35042

| TERMINAL DATA: TE TERMINAL                  |                | TE CRIMP SPECIFICATION         |                |
|---|----------------|--------------------------------|----------------|
| TERMINAL NAME: .250 SERIES FLAG FASTON REC. |                |                                |                |
| WIRE STRIP LENGTH                           |                | INSULATION DIAMETER RANGE      |                |
| 5.50-6.50 mm [ .217-.256 IN ]               |                | Ø2.00-3.30 mm [ .079-.130 IN ] |                |
| TERMINAL APPLICATION SPECIFICATION          | (A)114-20088   | -                              | -              |
| TERMINALS APPLIED $\Delta$ 5 $\Delta$ 9     |                |                                |                |
| TE TERMINAL                                 | TE TERMINAL    | TE TERMINAL                    | TE TERMINAL    |
| (A) 280050-1                                | (A) 280050-2   | (A) 280050-3                   | (A) 280050-7   |
| (A) 1-280050-2                              | (A) 1-280050-3 | (A) 2-280050-1                 | (A) 4-280050-1 |
| (A) 4-280050-2                              | (A) 4-280050-4 |                                |                |

| TERMINAL DATA: TE TERMINAL         |              | TE CRIMP SPECIFICATION         |             |
|------------------------------------|--------------|--------------------------------|-------------|
| TERMINAL NAME: .250 LIF FASTON     |              |                                |             |
| WIRE STRIP LENGTH                  |              | INSULATION DIAMETER RANGE      |             |
| 3.50-4.50 mm [ .138-.177 IN ]      |              | Ø2.00-3.80 mm [ .079-.150 IN ] |             |
| TERMINAL APPLICATION SPECIFICATION | (B)114-19025 | -                              | -           |
| TERMINALS APPLIED                  |              |                                |             |
| TE TERMINAL                        | TE TERMINAL  | TE TERMINAL                    | TE TERMINAL |
| (B) 100644-4                       |              |                                |             |

| WIRE SIZE | CRIMP HEIGHT mm [INCH]       | CRIMP HEIGHT REFERENCE SETTING |
|-----------|------------------------------|--------------------------------|
| 1.50mm2   | 1.55+/-0.05 [ .061+/- .002 ] | 6.1                            |
| 1.00mm2   | 1.47+/-0.05 [ .058+/- .002 ] | 6.9                            |
| 0.75mm2   | 1.40+/-0.05 [ .055+/- .002 ] | 7.5                            |
| 0.50mm2   | 1.32+/-0.05 [ .052+/- .002 ] | 8.3                            |



- $\Delta$ 1 RECOMMENDED SPARE PARTS
- $\Delta$ 2 REFER TO SUPPLIED INSTRUCTION SHEET FOR CLEANING, LUBRICATION AND STORAGE OF APPLICATOR.
- $\Delta$ 3 APPLY PART NUMBER 2-23419-6 LOCTITE TO THREADS OF ITEM 242.
- $\Delta$ 4 CRIMP HEIGHT REFERENCE SETTING WAS THE SETTING USED WHEN THE APPLICATOR WAS QUALIFIED AT THE FACTORY. ADJUSTMENT MAY BE NECESSARY WHEN RUNNING APPLICATOR IN THE FIELD.
- $\Delta$ 5 TERMINAL PITCH IS NOT COMPATIBLE MECHINCAL FEED.
- 6. UNLESS SPECIFIED OTHERWISE TORQUE VALUES SHALL BE USED PER DOCUMENT, 101-35000.
- $\Delta$ 7 CUT TO LENGTH AT ASSEMBLY.
- $\Delta$ 8 QUANTITY OF ITEM 129 IS IN METERS
- $\Delta$ 9 TERMINAL LUBRICANT IS RECOMMENDED.

**\*WARNING**  
ON INSTALLATION, SET WIRE DISC TO CRIMP HEIGHT REFERENCE SETTING FOR LARGEST WIRE SIZE. CRIMP HEIGHT REFERENCE SETTINGS GREATER THAN THE VALUE SHOWN MAY CAUSE DAMAGE TO THE CRIMP TOOLING, REFER TO THE INSTRUCTION SHEET FOR PROPER SETUP AND ADJUSTMENTS.

PACIFIC VERSION  
Shown on sheets 3 of 4 & 4 of 4  
(Atlantic version shown on sheets 1 of 4 & 2 of 4)

| LOC | DIST | REV | DATE | BY | APPV |
|-----|------|-----|------|----|------|
| A   | 66   |     |      |    |      |

| REVISIONS |      |             |                                     |    |      |
|-----------|------|-------------|-------------------------------------|----|------|
| REV       | DATE | DESCRIPTION | DATE                                | BY | APPV |
| -         | -    | SEE SHEET 1 | -                                   | -  | -    |
| -         | 2    | 2079383-1   | SCR, BHSC, RoHS (M3 X 8)            |    | 269  |
| -         | 1    | 1-1633782-3 | FENCE                               |    | 267  |
| -         | 1    | 2119082-4   | CAM, SNAIL, INSULATION ADJUSTMENT   |    | 244  |
| -         | 1    | 2079764-1   | WASHER, WAVE SPRING, CREST-TO-CREST |    | 243  |
| -         | 1    | 2119083-1   | RETAINER, INSULATION DIAL           |    | 242  |
| -         | 1    | 2844940-1   | AIR FEED MODULE                     |    | 238  |
| -         | REF  | 994970-2    | COUNTER, MAGNETIC                   |    | 164  |
| -         | 1    | 2119641-2   | FEED CAM, AIR FEED                  |    | 151  |
| -         | 1    | 2168083-8   | SCR, SKT HD CAP, RoHS, M4 X 16      |    | 144  |
| -         | 1    | 2168083-8   | SCR, SKT HD CAP, RoHS, M4 X 16      |    | 143  |
| -         | 1    | 1-1803583-0 | APPLICATOR BASIC ASSEMBLY, SF       |    | 141  |
| -         | 1    | 1803516-1   | RAM ASSEMBLY, SF PACIFIC            |    | 140  |
| -         | 1    | 2217068-1   | BRACKET, AIR BLAST                  |    | 130  |
| -         | 1    | 2030758-3   | TUBING, POLYURETHANE                |    | 129  |
| -         | 1    | 986965-8    | NUT, LOCK, HEX, TORQUE (M4)         |    | 128  |
| -         | 1    | 2168083-3   | SCR, SKT HD CAP, RoHS, M4 X 12.0    |    | 127  |
| -         | 1    | 986220-3    | CLAMP, CABLE, BLACK                 |    | 126  |
| -         | 1    | 1-22281-8   | SPRING, COMPRESSION                 |    | 121  |
| -         | 1    | 1-455888-0  | SPACER, CRIMPER                     |    | 120  |
| -         | 1    | 2119955-1   | ASSY, LUBRICATOR, SIDE FEED         |    | 113  |
| -         | 1    | 23238-1     | INSERT, COUPLING                    |    | 101  |
| -         | 1    | 2844908-1   | SCREW, LOCKING                      |    | 99   |
| -         | 1    | 2844907-1   | POST, LOCKING                       |    | 98   |
| -         | 1    | 3-690712-4  | FRONT STRIP GUIDE                   |    | 96   |
| -         | 2    | 1-2168083-3 | SCR, SKT HD CAP, RoHS, M3 X 16      |    | 95   |
| -         | 1    | 2168083-6   | SCR, SKT HD CAP, RoHS, M5 X 65      |    | 93   |
| -         | 1    | 455888-1    | SPACER, CRIMPER                     |    | 82   |
| -         | 1    | 1803607-3   | DOCUMENTATION PACKAGE               |    | 71   |
| -         | 1    | 2119791-9   | DEPRESSOR, WIRE                     |    | 70   |
| -         | 1    | 2119943-1   | WASHER, SPACER                      |    | 69   |
| -         | 1    | 2119740-1   | TAG, IDENTIFICATION                 |    | 67   |
| -         | 2    | 2168078-1   | SCREW, DRIVE, RH, RoHS, 2 x .188    |    | 66   |
| -         | 2    | 2-18032-5   | SCR, SET, FLT PNT, M5 X 20.0        |    | 61   |
| -         | 1    | 5-18022-5   | SCR, HEX HD CAP, M4 X 6.0           |    | 59   |
| -         | 1    | 1338685-3   | PAWL, FEED                          |    | 56   |
| -         | 1    | 18023-9     | SCR, SKT HD CAP M4 X 6.0            |    | 49   |
| -         | 1    | 1803602-1   | SCR, BHSC, RoHS (M8 X 25)           |    | 41   |
| -         | 2    | 2079383-8   | SCR, BHSC, RoHS (M4 X 16)           |    | 33   |
| -         | 2    | 1-2844962-4 | SPACER, CYLINDRICAL, STRIP GUIDE    |    | 30   |
| -         | 1    | 2844938-1   | PLATE, STRIP GUIDE                  |    | 29   |
| -         | 2    | 22281-6     | SPRING, COMPRESSION                 |    | 27   |
| -         | 1    | 356835-1    | LEVER, DRAG RELEASE                 |    | 26   |
| -         | 1    | 690792-3    | DRAG, STOCK                         |    | 25   |
| -         | 1    | 1320928-2   | STRIP GUIDE                         |    | 24   |
| -         | 1    | 980371-4    | SCR, SKT HD SHLDR 5.0 DIA X 6.0     |    | 23   |
| -         | 1    | 2168083-2   | SCR, SKT HD CAP, RoHS, M4 X 8.0     |    | 21   |
| -         | 4    | 1-18028-2   | WASHER, FLAT, REG M4                |    | 20   |
| -         | 1    | 2119533-6   | STRIPPER, SIDE FEED                 |    | 19   |
| -         | 1    | 3-853720-1  | BLADE, SLUG                         |    | 15   |
| -         | 1    | 2-853721-1  | BLADE, SLUG                         |    | 10   |
| -         | 1    | 2-1803012-8 | PLATE, REAR SHEAR                   |    | 9    |
| -         | 1    | 1803010-8   | ANVIL, SPEICAL, COMBINATION         |    | 8    |
| -         | -    | -           | -                                   |    | 7    |
| -         | -    | -           | -                                   |    | 6    |
| -         | -    | -           | -                                   |    | 5    |
| -         | 1    | 238009-4    | BLOCK, FL CRIMPER SPACER            |    | 4    |
| -         | 1    | 6-1803016-3 | CRIMPER, INSULATION F               |    | 3    |
| -         | 1    | 455888-5    | SPACER, CRIMPER                     |    | 2    |
| -         | 1    | 456407-8    | CRIMPER, WIRE PREMIUM               |    | 1    |

| DIMENSIONS: |          | TOLERANCES UNLESS OTHERWISE SPECIFIED: |         | DRAWING NO |         |
|-------------|----------|--|---------|------------|---------|
| mm          | 0 PLC ±  | 1 PLC ±                                | 2 PLC ± | 3 PLC ±    | 4 PLC ± |
|             | ANGLES ± |  |         |            |         |
| MATERIAL    | FINISH   | WEIGHT                                 | SCALE   | SHEET      | REV     |
|             |          |  | 1:2     | 3 OF 4     | C       |

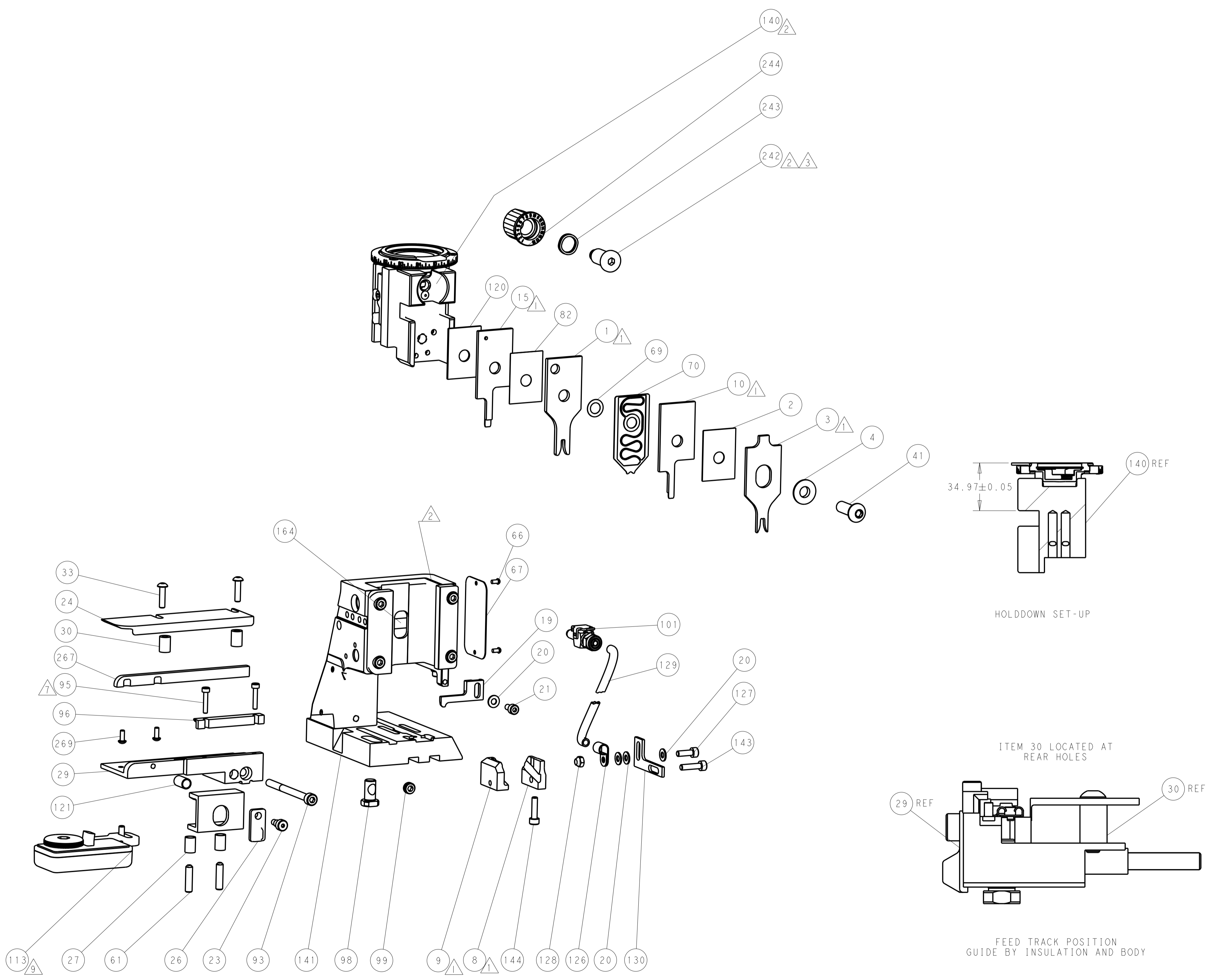
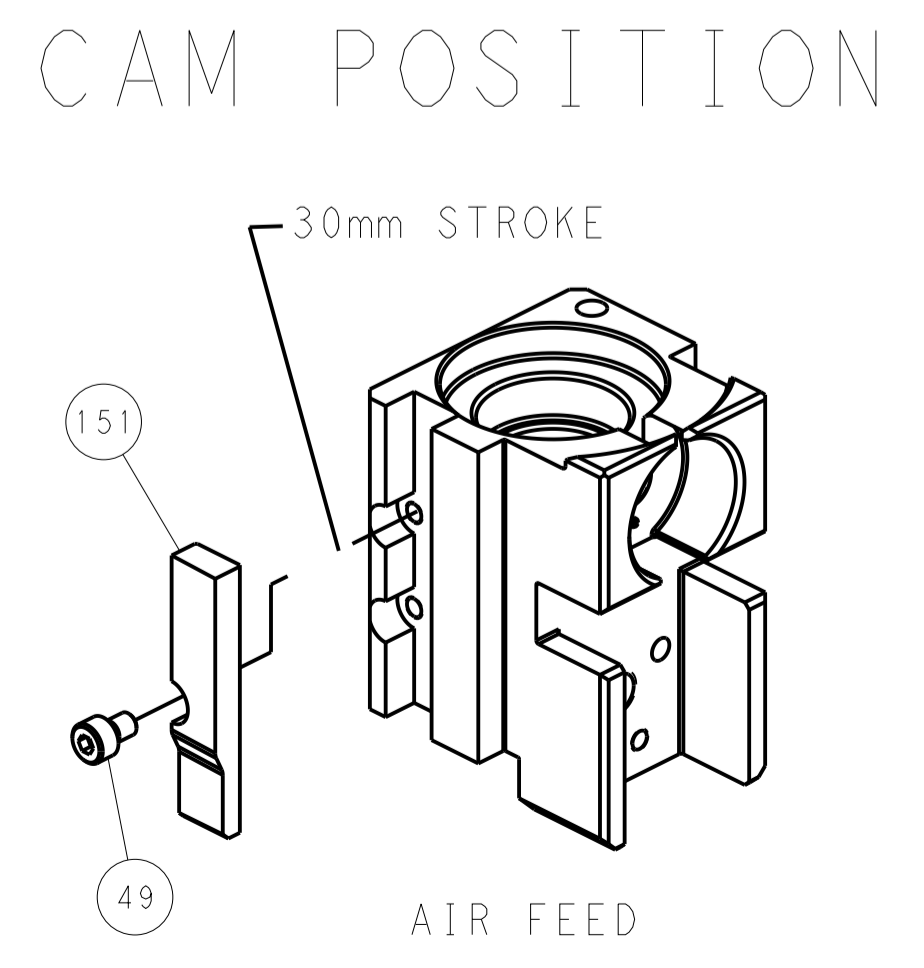
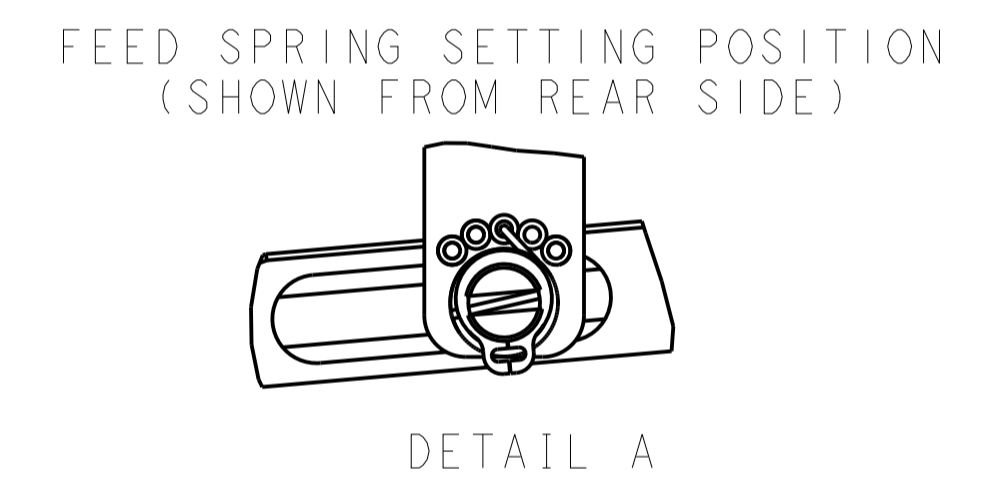
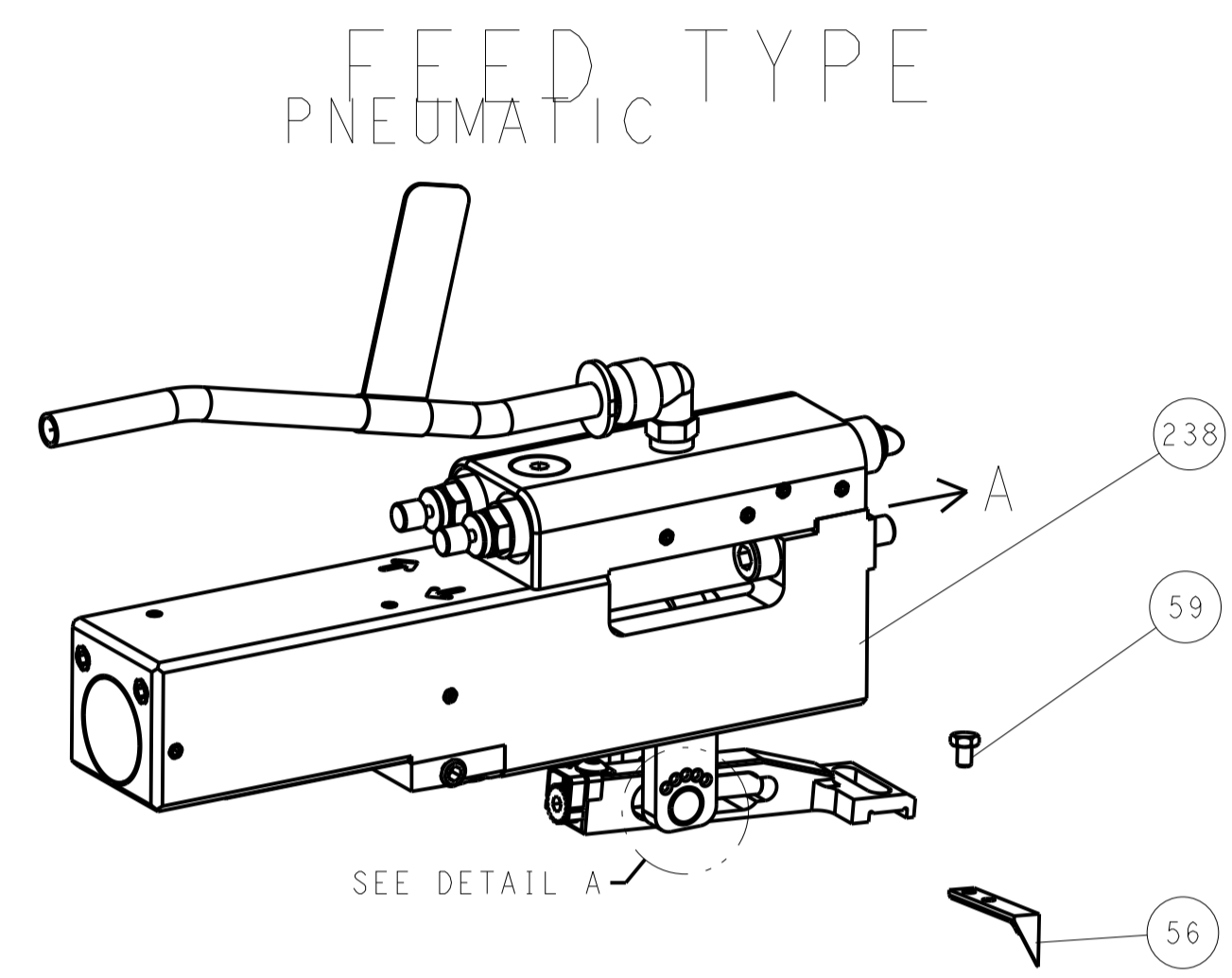
**STE** TE Connectivity  
Harrisburg, PA 17105-3608

NAME: Ocean Side Feed Applicator

SIZE: A1 | 00779 | C=2836223

Customer Accessible Production Drawing

| LOC |    | DIST |     | REVISIONS   |      |     |      |
|-----|----|------|-----|-------------|------|-----|------|
| A   | 66 | P    | LTM | DESCRIPTION | DATE | DWN | APVD |
|     |    | -    | -   | SEE SHEET 1 | -    | -   | -    |



**PACIFIC VERSION**  
 Shown on sheets 3 of 4 & 4 of 4  
 (Atlantic version shown on sheets 1 of 4 & 2 of 4)

|             |         |  |         |  |         |  |  |
|-------------|---------|--|---------|--|---------|--|--|
| DIMENSIONS: |         | TOLERANCES UNLESS OTHERWISE SPECIFIED: |         | DWN: H. HUANG 04MA42016                |         | TE Connectivity                              |  |
| mm          | 0 PLC ± | 1 PLC ±                                | 2 PLC ± | 3 PLC ±                                | 4 PLC ± | Harrisburg, PA 17105-3608                    |  |
| MATERIAL:   |         | FINISH:                                |         | CHK: L. ZHANG 04MA42016                |         | NAME: Ocean Side Feed Applicator             |  |
|             |         |  |         | APVD: H. GUO 04MA42016                 |         | SIZE: CAGE CODE: DRAWING NO: 00779 ©=2836223 |  |
|             |         |  |         | REVISIONS:                             |         | RESTRICTED TO:                               |  |
|             |         |  |         | Customer Accessible Production Drawing |         | SCALE: 1:2 SHEET 4 OF 4 REV C                |  |