

ATLANTIC VERSION TERMINATOR INTERFACE ADAPTER	PART NUMBER	REVISION	DESCRIPTION	FEED TYPE	APPLICATOR STYLE CONVERSION CHART					
					CONVERT TO	PART NUMBERS REQUIRED				
	2836180-2	3	FINE CRIMP HEIGHT ADJUST	PNEUMATIC	-	-	-	-	-	-
	2836180-5	3	FINE CRIMP HEIGHT ADJUST	SERVO LATCH PLATE	2119951-1	-	8-2836180-5	1901094-3	1752354-6	2168400-6 (QUANTITY 2)
	2836180-6	3	NON-CRIMP HEIGHT ADJUST	SERVO LATCH PLATE	2161326-1	-	8-2836180-4	-	-	-
	2836180-7	3	FINE CRIMP HEIGHT ADJUST	NONE	-	-	-	-	-	-
	7-2836180-7	2	CRIMP TOOLING KIT	-	-	-	-	-	-	-

APPLICATOR DATA		
CRIMP SIZE	TYPE	
WIRE A 2.79 mm [.110]	○	
WIRE B 2.92 mm [.115]	○	
INSUL 3.56 mm [.140]	○	

APPLICATOR INSTRUCTIONS 408-10389

TERMINAL DATA: TE TERMINAL TE CRIMP SPECIFICATION			
TERMINAL NAME: OUTER FERRULE, 90 AND 180 FAKRA			
WIRE STRIP LENGTH	INSULATION DIAMETER RANGE		
114-32145	∅ -		
TERMINALS APPLIED			
TE TERMINAL	TE TERMINAL	TE TERMINAL	TE TERMINAL
2272584-9			

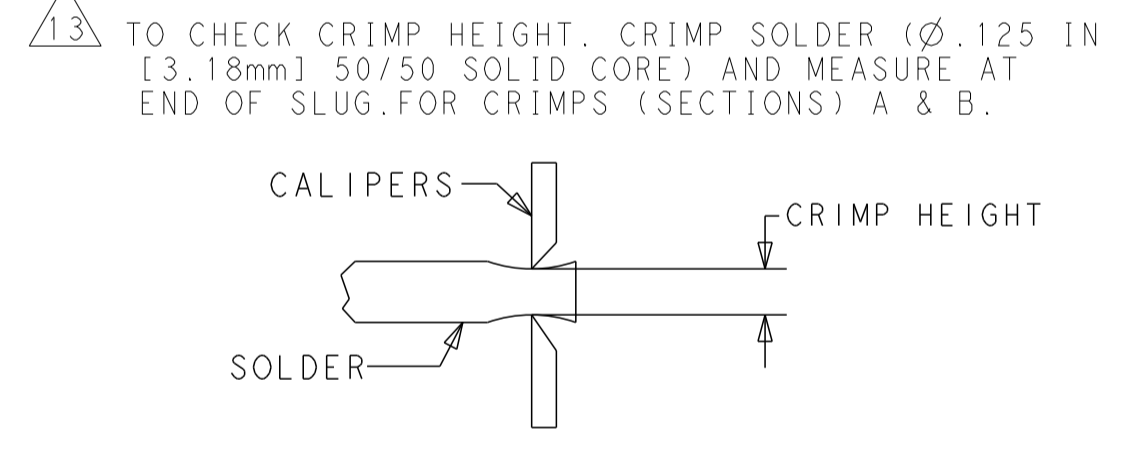
TERMINAL DATA: TE TERMINAL TE CRIMP SPECIFICATION			
TERMINAL NAME: OUTER FERRULE, 90 AND 180 FAKRA			
WIRE STRIP LENGTH	INSULATION DIAMETER RANGE		
114-32145	∅ -		
TERMINALS APPLIED			
TE TERMINAL	TE TERMINAL	TE TERMINAL	TE TERMINAL
1-2272584-1			

TERMINAL DATA: TE TERMINAL TE CRIMP SPECIFICATION			
TERMINAL NAME: OUTER FERRULE, 90 AND 180 FAKRA			
WIRE STRIP LENGTH	INSULATION DIAMETER RANGE		
114-32145	∅ -		
TERMINALS APPLIED			
TE TERMINAL	TE TERMINAL	TE TERMINAL	TE TERMINAL
1-2272584-2			

WIRE SIZE	CRIMP HEIGHT mm [INCH]	CRIMP B HEIGHT mm [INCH]	CRIMP HEIGHT REFERENCE SETTING
1.5DS	2.84 +/- 0.03 [.112 +/- .001]	3.00 +/- 0.03 [.118 +/- .001]	4.4
RG-179 or RG-316	2.75 +/- 0.03 [.108 +/- .001]	2.90 +/- 0.03 [.114 +/- .001]	3.9

WIRE SIZE	CRIMP HEIGHT mm [INCH]	CRIMP B HEIGHT mm [INCH]	CRIMP HEIGHT REFERENCE SETTING
RG-174 or RG-174LL	2.75 +/- 0.03 [.108 +/- .001]	2.90 +/- 0.03 [.114 +/- .001]	5.3

- RECOMMENDED SPARE PARTS
- GREASE BEARING SURFACES LIGHTLY
- LUBRICATE DAILY PER THE APPLICATOR INSTRUCTION SHEET SUPPLIED WITH THE APPLICATOR.
- APPLICATOR SPECIFIC DATA TO BE ENTERED INTO BLANK MEMORY CHIP AT ASSEMBLY. SEE BELOW FOR PART NUMBER:
 PNEUMATIC FEED WITH "SMART APPLICATOR" CONVERSION: 8-2836180-4
 SERVO FEED WITH "FINE CRIMP HEIGHT ADJUST": 8-2836180-5
 SERVO FEED WITH "NON-CRIMP HEIGHT ADJUST": 8-2836180-6
- ADJUSTMENT OF THE STRIPPER MAY BE REQUIRED WHEN MOVING THE APPLICATOR BETWEEN BENCH AND LEADMAKER APPLICATIONS.
- APPLY PART NUMBER 1-23419-5 LOCTITE TO THREADS OF ITEMS 62 & 180. APPLY PART NUMBER 2-23419-6 LOCTITE TO THREADS OF ITEM 242. FOR -6 ONLY APPLY PART NUMBER 1-23419-5 LOCTITE TO THREADS OF ITEMS 37.
- GREASE THREADS, GROOVE AND O-RING ON ITEMS 35 & 252.
- MAGNET, ITEM 166 MUST BE ORIENTED CORRECTLY IN ORDER TO PROPERLY ACTUATE THE COUNTER.
- CRIMP HEIGHT REFERENCE SETTING WAS THE SETTING USED WHEN THE APPLICATOR WAS QUALIFIED AT THE FACTORY. ADJUSTMENT MAY BE NECESSARY WHEN RUNNING APPLICATOR IN THE FIELD.
- TERMINAL PITCH NOT COMPATIBLE WITH MECHANICAL FEED.
- TO CONVERT THE APPLICATOR TO A NON-CARRIER CUTTING STYLE, REMOVE ITEM 13 AND ATTACH TO THE LOCATION ON THE BACK SIDE OF THE HOUSING. REFER TO INSTRUCTION SHEET FOR ADDITIONAL INFORMATION.
- WHEN ASSEMBLING A NON CRIMP HEIGHT ADJUST APPLICATOR (-6) USE SHIMS FROM ITEM 260 TO ACHIEVE A NOMINAL SHIM HEIGHT OF 2.84.



- TO CHECK CRIMP HEIGHT, CRIMP SOLDER (∅.125 IN [3.18mm] 50/50 SOLID CORE) AND MEASURE AT END OF SLUG FOR CRIMPS (SECTIONS) A & B.
- FOR JACKET CRIMP (SECTION C) USE ∅4.76 SOLDER. REFER TO APPLICATION SPECIFICATION 114-32145.
- ITEM 1 APPLIES TO WIRE CRIMP (SECTION) A.
- ITEM 178 APPLIES TO WIRE CRIMP (SECTION) B.
- SEE APPLICATION SPECIFICATION 114-32145 FOR RECOMMENDED STRIP LENGTH DIMENSIONS.
- FOR ADDITIONAL CABLE TYPES PLEASE SEE APPLICATION SPECIFICATION 114-32145.
- FOR TESTING PURPOSES ADDITIONAL ANVIL PART NUMBERS 1803160-8 & 1803160-9 WERE SHIPPED WITH THE REVISION 2 APPLICATOR.

***WARNING**
 ON INSTALLATION, SET WIRE DISC, ITEM 40 TO LARGEST WIRE SIZE SETTING. USE OF SETTINGS BELOW MINIMUM REQUIRED CRIMP HEIGHT SETTING WILL CAUSE DAMAGE TO CRIMP TOOLING.

ITEM NO	DESCRIPTION	ITEM NO
1803160-9	ANVIL	262
1803160-8	ANVIL	261
2119957-2	APPLICATOR SHIM PACK	260
1803078-4	SPACER, PRECISION	259
8-21084-0	O-RING, .676 ID, .070 DIA. MAT.	252
2119640-1	PUSH ROD, AIR FEED	250
2079988-1	BUSHING, LCH5-12, MISUMI	249
2119641-1	FEED CAM, AIR FEED	248
2119798-1	DETENT PIN	247

ATLANTIC VERSION
 Shown on sheets 1 of 4 & 2 of 4
 (Pacific version shown on sheets 3 of 4 & 4 of 4)

SET UP GAUGE	LOC	DIST	REVISIONS			
2119599-1	A	66	REVISED	DATE	OWN	APVD
				16MAR2017	MR	TE

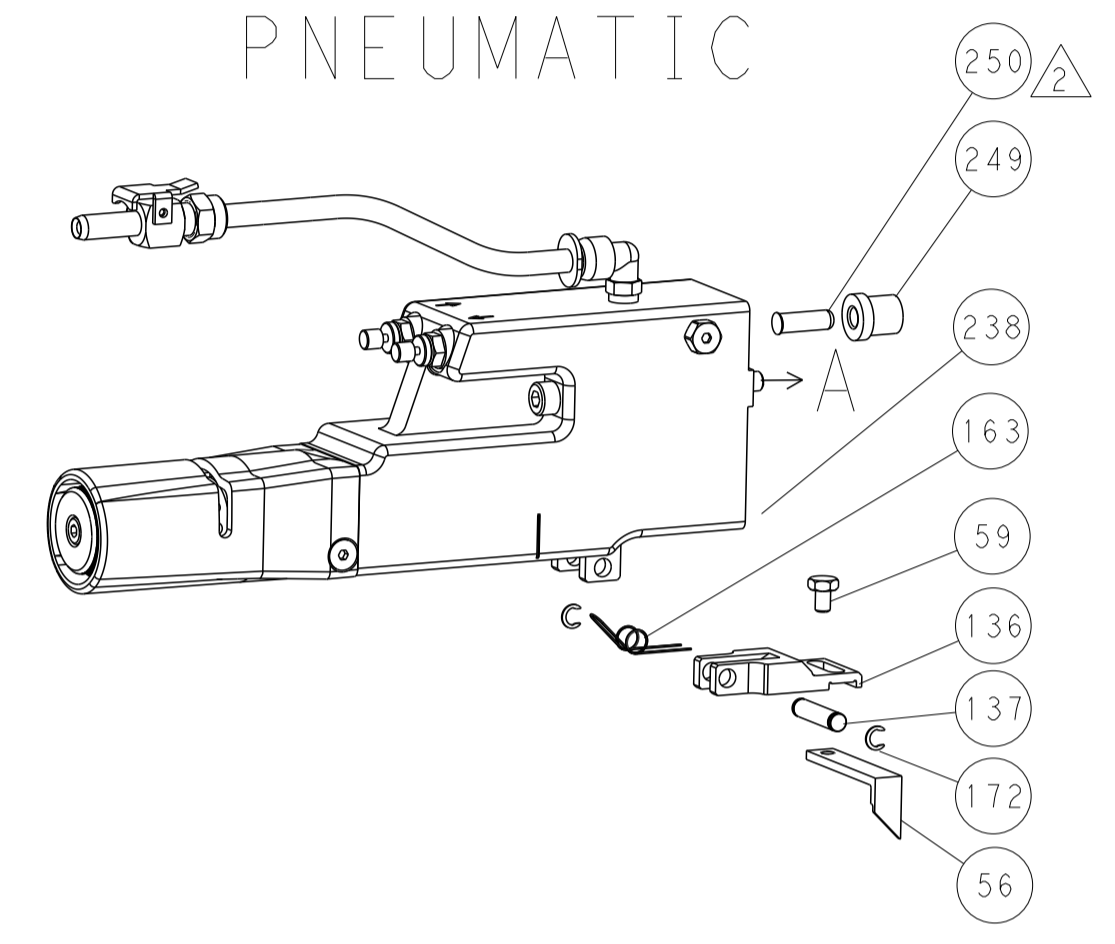
ITEM NO	DESCRIPTION	DATE	OWN	APVD
246	SPRING, COMPRESSION			
245	RAM, STEPPED, ATLANTIC, SF, NON-ADJ			
244	CAM, SNAIL, INSULATION ADJUSTMENT			
243	WASHER, WAVE SPRING, CREST-TO-CREST			
242	RETAINER, INSULATION DIAL			
241	SCR, SKT HD CAP M3 X 4.0			
240	SHCS, LOW HEAD, RoHS, M5 X 16			
238	AIR FEED MODULE			
230	SCR, BHSC, RoHS (M3 X 6)			
225	SCR, BHSC, RoHS (M4 X 8)			
224	SCR, SKT HD CAP, RoHS, M4 X 5			
223	PLATE, RETAINING			
222	PLATE, RETAINING			
213	TAG, IDENTIFICATION			
198	SPACER, FEEDER			
180	STANDOFF, HOLD-DOWN			
179	LOCATER BLOCK, TERMINAL			
178	CRIMPER, WIRE 0			
177	PIN, SLOTTED SPRING 3.0 X 14.0			
176	SPRING, COMPRESSION			
175	GUIDE PIN, HOLDDOWN			
174	GUIDE PIN, HOLDDOWN			
172	RING, RETAIN, EXTERN, 3/16 CRESCENT			
166	MAGNET, RARE EARTH HIGH ENERGY			
164	COUNTER, MAGNETIC			
163	SPRING, FEED FINGER			
137	PIN, RETAIN, GRVD, 3/16 X .854			
136	HOLDER, FEED FINGER, AF			
135	MEMORY CHIP, PROGRAMMED			
133	SERVO FEED LATCH ASM			
117	FEED FINGER ASSEMBLY, SF			
89	GUARD, FRONT CHIP			
82	SPACER, CRIMPER			
71	DOCUMENTATION PACKAGE			
70	DEPRESSOR, WIRE			
67	TAG, IDENTIFICATION			
66	SCREW, DRIVE, RH, RoHS, 2 x .188			
63	LIMITER, ADJUSTMENT BOLT			
62	SCR, SET, SOC, CONE POINT, M3 x 4.0			
60	SCR, BHSC, RoHS (M4 X 8)			
59	SCR, HEX HD CAP, M4 X 6.0			
56	FEED PAWL			
54	SHCS, LOW HEAD, RoHS, M4 X 12			
52	NUT, HEX, REG, RoHS, M3.5			
51	HOLDDOWN, TERMINAL			
49	SCR, SKT HD CAP M4 X 6.0			
46	APPLICATOR BASIC ASSEMBLY, SF			
44	RAM, STEPPED, AMP STYLE, SIDE FEED			
41	SCR, BHSC, RoHS (M8 X 40)			
40	DISC, NUMBERED FA WIRE ADJUSTMENT			
39	APPLICATOR SHIM PACK			
38	RAM WASHER, PRECISION			
37	FA HEAD, ATLANTIC STYLE			
35	BOLT, ADJUSTMENT			
34	SUPPORT, TERMINAL			
33	SCR, BHSC, RoHS (M4 X 20)			
32	HEX HEAD, FLANGED, M5 x 8mm LONG			
30	SPACER, STRIP GUIDE			
29	ASSEMBLY, STRIP GUIDE			
24	STRIP GUIDE			
13	INSERT, SHEAR			
12	SPRING, COMPRESSION			
11	STOP, SHEAR			
10	SHEAR HOLDER, FRONT			
9	FLOATING SHEAR, FRONT			
8	ANVIL			
7				
6				
5	DEPRESSOR, SHEAR			
4	BLOCK, CRIMPER SPACER			
3	CRIMPER, INSULATION 0			
2	SPACER, CRIMPER			
1	CRIMPER, WIRE 0			

DIMENSIONS:		TOLERANCES UNLESS OTHERWISE SPECIFIED:		OWN: M. RILEY 29JUL2016	
mm	0 PLC ±	1 PLC ±	2 PLC ±	3 PLC ±	4 PLC ±
	ANGLES	FINISH		APVD: J. DEGRANGE 29JUL2016	NAME: Ocean Side Feed Applicator
MATERIAL:		WEIGHT:		SIZE: A1	CAGE CODE: 00779
Customer Accessible Production Drawing				SCALE: 1:2	SHEET 1 OF 4

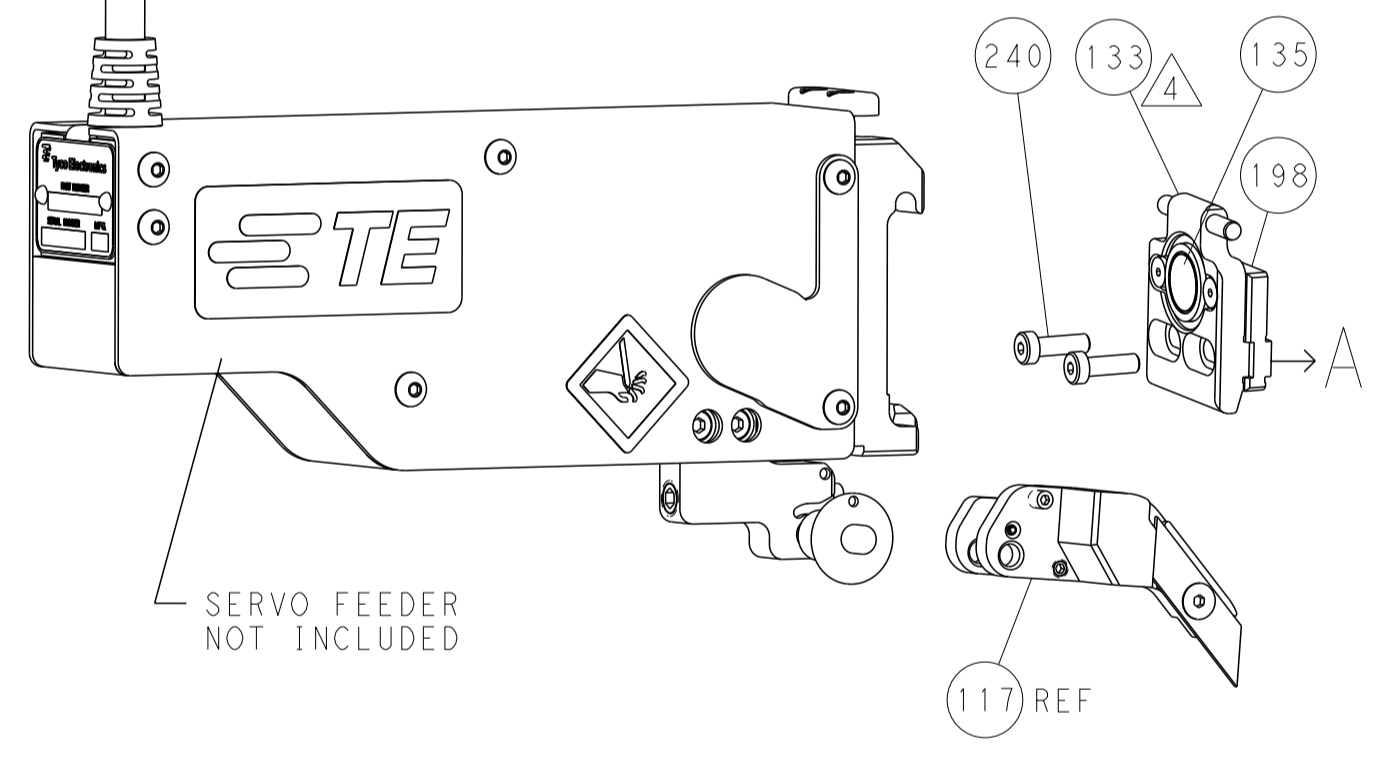
LOC	DIST	REV	DATE	BY	APPV

FEED TYPE

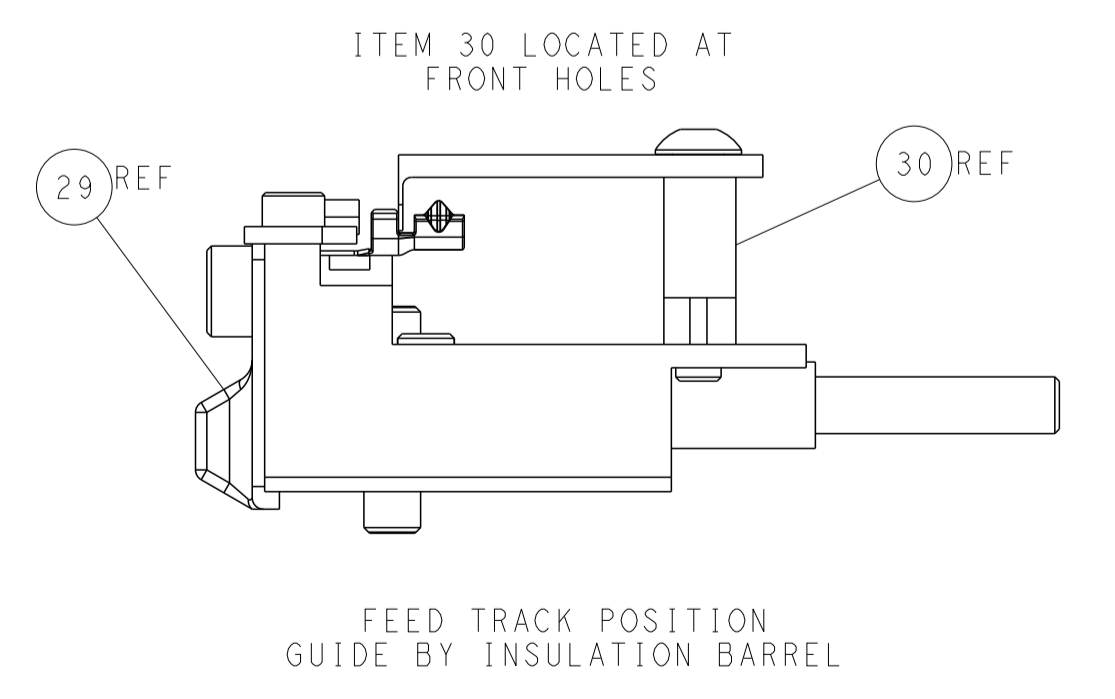
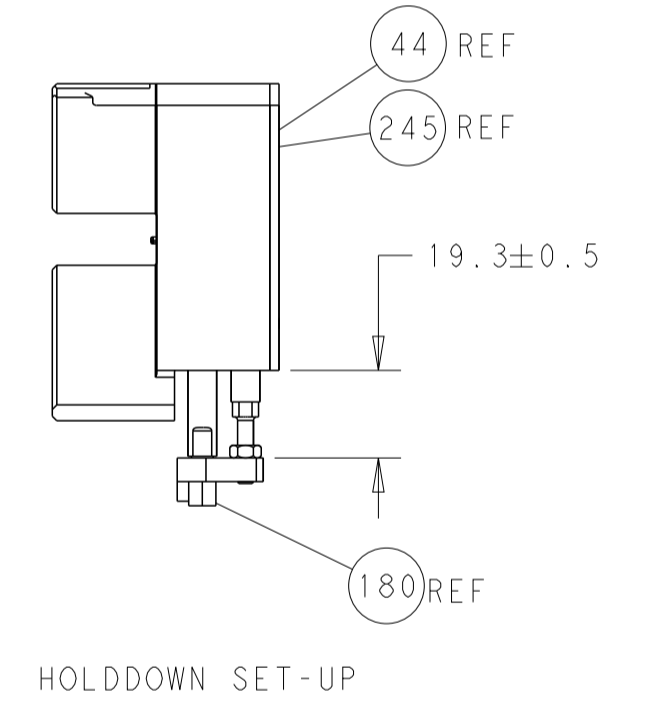
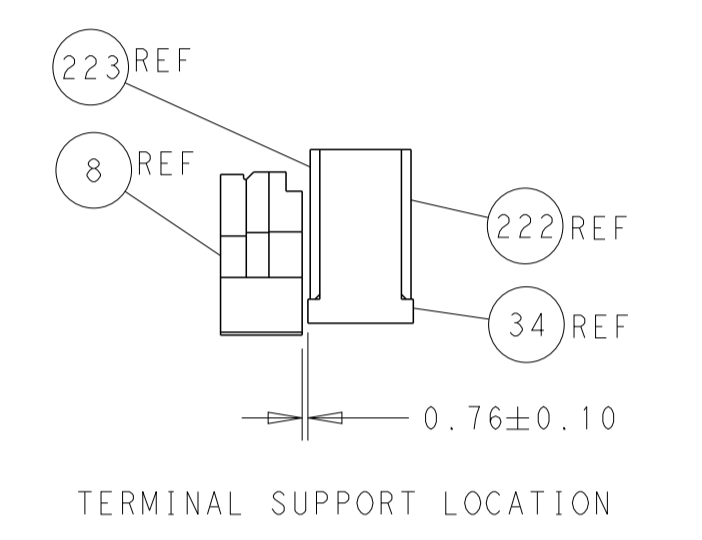
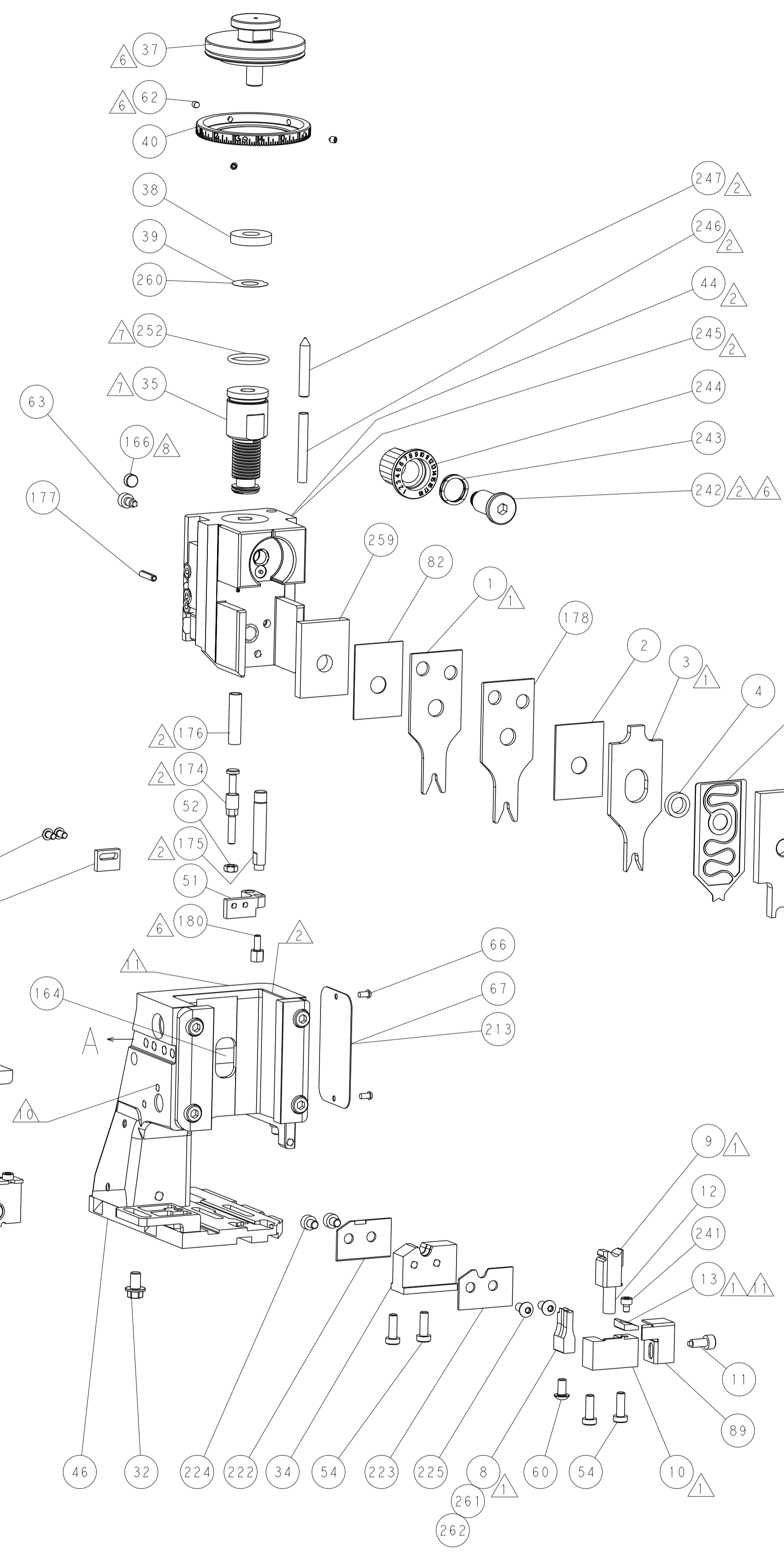
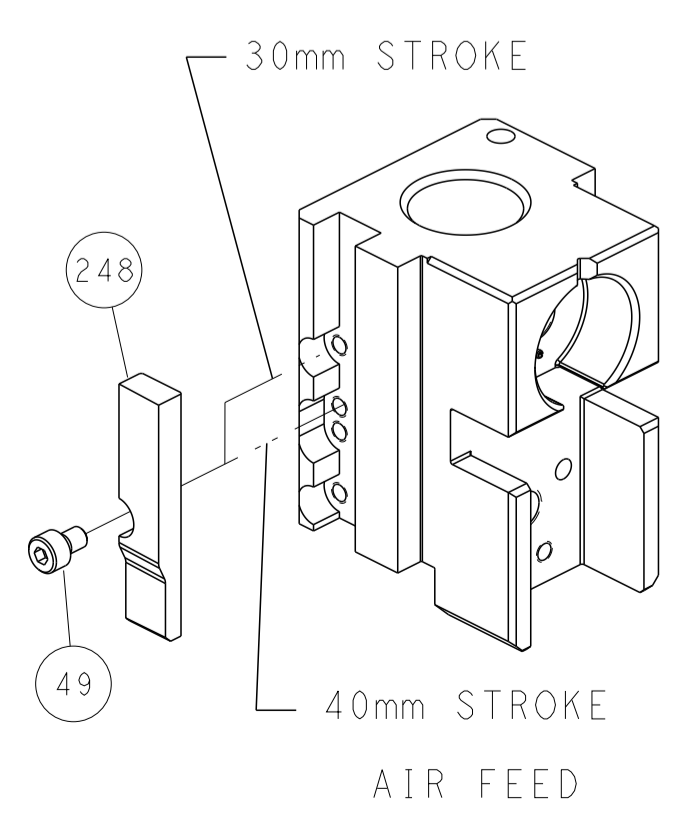
PNEUMATIC



SERVO LATCH PLATE



CAM POSITION



ATLANTIC VERSION
 Shown on sheets 1 of 4 & 2 of 4
 (Pacific version shown on sheets 3 of 4 & 4 of 4)

DIMENSIONS: mm 		TOLERANCES UNLESS OTHERWISE SPECIFIED: 0 PLC ± 1 PLC ± 2 PLC ± 3 PLC ± 4 PLC ± ANGLES ± FINISH ±		DWG M. RILEY 29JUL2016 CHK T. ELBIN 29JUL2016 APVD J. DEGRANGE 29JUL2016 PRODUCT SPEC APPLICATION SPEC WEIGHT SCALE 1:2 SHEET 2 OF 4 REV 3		NAME Ocean Side Feed Applicator SIZE CAGE CODE DRAWING NO A1 00779 ©=2836180 RESTRICTED TO	
MATERIAL FINISH				CUSTOMER ACCESSIBLE PRODUCTION DRAWING			

PACIFIC VERSION TERMINATOR INTERFACE ADAPTER	PART NUMBER	REVISION	DESCRIPTION	FEED TYPE	APPLICATOR STYLE CONVERSION CHART					
					CONVERT TO	PART NUMBERS REQUIRED				
	2-2836180-2	3	FINE CRIMP HEIGHT ADJUST	PNEUMATIC	-	-	-	-	-	-
					SERVO LATCH PLATE	2119951-1	-	8-2836180-5	1901094-3	1752354-6
	2-2836180-5	3	FINE CRIMP HEIGHT ADJUST	SERVO LATCH PLATE	-	-	-	-	-	-
					PNEUMATIC FEED	2119950-1	1338683-8	5-18022-5	2119641-2	2119799-1
2-2836180-7	3	FINE CRIMP HEIGHT ADJUST	NONE	-	-	-	-	-	-	
7-2836180-7	2	CRIMP TOOLING KIT	-	-	-	-	-	-	-	

APPLICATOR DATA		
CRIMP	SIZE	TYPE
WIRE A	2.79 mm [.110]	○
WIRE B	2.92 mm [.115]	○
INSUL	3.56 mm [.140]	○
APPLICATOR INSTRUCTIONS 408-10389		

TERMINAL DATA: TE TERMINAL		TE CRIMP SPECIFICATION	
TERMINAL NAME: OUTER FERRULE, 90 AND 180 FAKRA			
WIRE STRIP LENGTH		INSULATION DIAMETER RANGE	
TERMINAL APPLICATION SPECIFICATION	114-32145	-	-
TERMINALS APPLIED			
TE TERMINAL	TE TERMINAL	TE TERMINAL	TE TERMINAL
2272584-9			

TERMINAL DATA: TE TERMINAL		TE CRIMP SPECIFICATION	
TERMINAL NAME: OUTER FERRULE, 90 AND 180 FAKRA			
WIRE STRIP LENGTH		INSULATION DIAMETER RANGE	
TERMINAL APPLICATION SPECIFICATION	114-32145	-	-
TERMINALS APPLIED			
TE TERMINAL	TE TERMINAL	TE TERMINAL	TE TERMINAL
1-2272584-1			

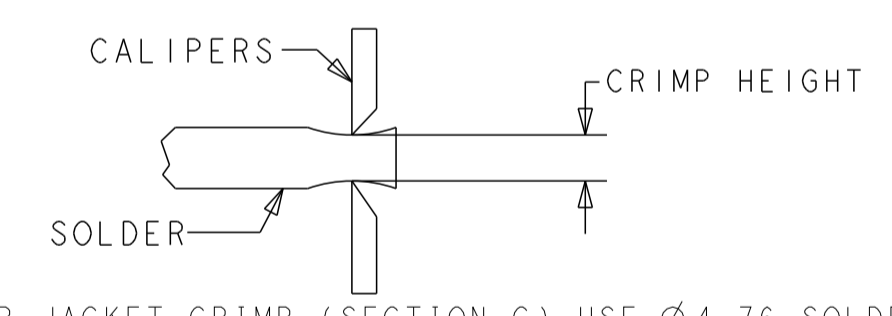
TERMINAL DATA: TE TERMINAL		TE CRIMP SPECIFICATION	
TERMINAL NAME: OUTER FERRULE, 90 AND 180 FAKRA			
WIRE STRIP LENGTH		INSULATION DIAMETER RANGE	
TERMINAL APPLICATION SPECIFICATION	114-32145	-	-
TERMINALS APPLIED			
TE TERMINAL	TE TERMINAL	TE TERMINAL	TE TERMINAL
1-2272584-2			

WIRE SIZE	CRIMP HEIGHT mm [INCH]	CRIMP B HEIGHT mm [INCH]	CRIMP HEIGHT REFERENCE SETTING
1.5DS	2.84+/-0.03 [.112+/- .001]	3.00+/-0.03 [.118+/- .001]	4.4

WIRE SIZE	CRIMP HEIGHT mm [INCH]	CRIMP B HEIGHT mm [INCH]	CRIMP HEIGHT REFERENCE SETTING
RG-179 or RG-316	2.75+/-0.03 [.108+/- .001]	2.90+/-0.03 [.114+/- .001]	3.9

WIRE SIZE	CRIMP HEIGHT mm [INCH]	CRIMP B HEIGHT mm [INCH]	CRIMP HEIGHT REFERENCE SETTING
RG-174 or RG-174LL	2.75+/-0.03 [.108+/- .001]	2.90+/-0.03 [.114+/- .001]	5.3

TO CHECK CRIMP HEIGHT, CRIMP SOLDER (Ø.125 IN [3.18mm] 50/50 SOLID CORE) AND MEASURE AT END OF SLUG. FOR CRIMPS (SECTIONS) A & B.



FOR JACKET CRIMP (SECTION C) USE Ø4.76 SOLDER. REFER TO APPLICATION SPECIFICATION 114-32145.

- 13 ITEM 1 APPLIES TO WIRE CRIMP A.
- 14 ITEM 178 APPLIES TO WIRE CRIMP B.
- 15 SEE APPLICATION SPECIFICATION 114-32145 FOR RECOMMENDED STRIP LENGTH DIMENSIONS.
- 16 FOR ADDITIONAL CABLE TYPES PLEASE SEE APPLICATION SPECIFICATION 114-32145.
- 17 FOR TESTING PURPOSES ADDITIONAL ANVIL PART NUMBERS 1803160-8 & 1803160-9 WERE SHIPPED WITH THE REVISION 2 APPLICATOR.

***WARNING**
ON INSTALLATION, SET WIRE DISC, ITEM 40 TO LARGEST WIRE SIZE SETTING. USE OF SETTINGS BELOW MINIMUM REQUIRED CRIMP HEIGHT SETTING WILL CAUSE DAMAGE TO CRIMP TOOLING.

1	1	1	1	1803160-9	ANVIL	262
1	1	1	1	1803160-8	ANVIL	261
-	1	1	1	1803078-4	SPACER, PRECISION	259
-	1	1	1	2119782-1	FINE ADJUST HEAD ASM, PACIFIC STYLE	251
-	-	-	1	2119640-1	PUSH ROD, AIR FEED	250
-	-	-	1	2079988-1	BUSHING, LCH5-12, MISUMI	249
-	1	1	1	1-22279-3	SPRING, COMPRESSION	246
-77	-27	-25	-22	PART NO	DESCRIPTION	ITEM NO

- 1 RECOMMENDED SPARE PARTS
- 2 GREASE BEARING SURFACES LIGHTLY
- 3 LUBRICATE DAILY PER THE APPLICATOR INSTRUCTION SHEET SUPPLIED WITH THE APPLICATOR.
- 4 APPLICATOR SPECIFIC DATA TO BE ENTERED INTO BLANK MEMORY CHIP AT ASSEMBLY. SEE BELOW FOR PART NUMBER:
PNEUMATIC FEED WITH "SMART APPLICATOR" CONVERSION: 8-2836180-4
SERVO FEED WITH "FINE CRIMP HEIGHT ADJUST": 8-2836180-5
- 5 ADJUSTMENT OF THE STRIPPER MAY BE REQUIRED WHEN MOVING THE APPLICATOR BETWEEN BENCH AND LEADMAKER APPLICATIONS.
- 6 APPLY PART NUMBER 1-23419-5 LOCTITE TO THREADS OF ITEMS 62 & 180. APPLY PART NUMBER 2-23419-6 LOCTITE TO THREADS OF ITEMS 242.
- 7 GREASE THREADS, GROOVE AND O-RING ON ITEMS 139 & 152.
- 8 MAGNET MUST BE ORIENTED CORRECTLY IN ORDER TO PROPERLY ACTUATE THE COUNTER.
- 9 CRIMP HEIGHT REFERENCE SETTING WAS THE SETTING USED WHEN THE APPLICATOR WAS QUALIFIED AT THE FACTORY. ADJUSTMENT MAY BE NECESSARY WHEN RUNNING APPLICATOR IN THE FIELD.
- 10 TERMINAL PITCH NOT COMPATIBLE WITH MECHANICAL FEED.
- 11 TO CONVERT THE APPLICATOR TO A NON-CARRIER CUTTING STYLE, REMOVE ITEM 13 AND ATTACH TO THE LOCATION ON BACK SIDE OF THE HOUSING. REFER TO INSTRUCTION SHEET FOR ADDITIONAL INFORMATION.

SET UP GAUGE	LOC	DIST	REVISIONS					
2119599-1			P	LTN	DESCRIPTION	DATE	OWN	APVD
			-	-	SEE SHEET 1	-	-	-

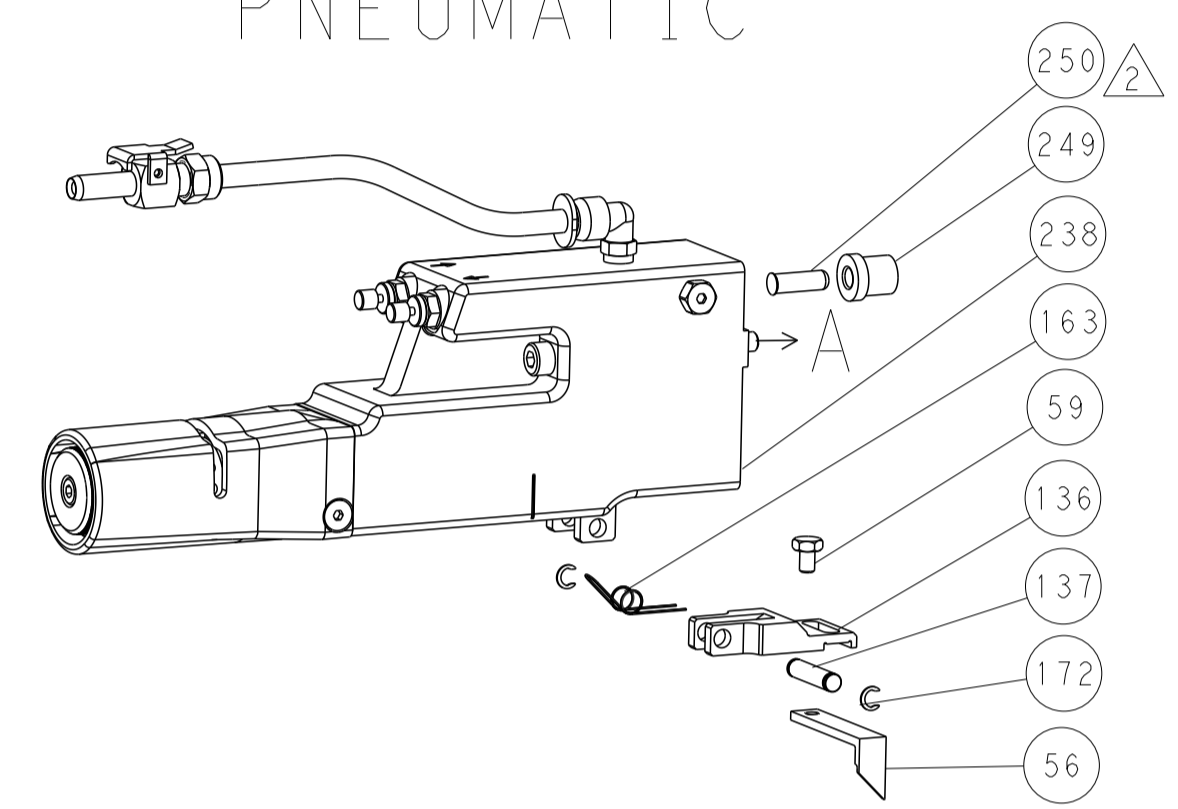
-	1	1	1	2119082-1	CAM, SNAIL, INSULATION ADJUSTMENT	244
-	1	1	1	2079764-1	WASHER, WAVE SPRING, CREST-TO-CREST	243
-	1	1	1	2119083-1	RETAINER, INSULATION DIAL	242
-	1	1	1	7-18023-7	SCR, SKT HD CAP M3 X 4.0	241
-	-	2	-	2168400-6	SHCS, LOW HEAD, RoHS, M5 X 16	240
-	-	-	1	2063440-2	AIR FEED MODULE	238
-	2	2	2	1-2079383-0	SCR, BHSC, RoHS (M3 X 6)	230
-	2	2	2	2079383-4	SCR, BHSC, RoHS (M4 X 8)	225
-	2	2	2	1-2168083-4	SCR, SKT HD CAP, RoHS, M4 X 5	224
-	1	1	1	1803306-1	PLATE, RETAINING	223
-	1	1	1	1803340-1	PLATE, RETAINING	222
-	-	1	-	2119740-2	TAG, IDENTIFICATION	213
-	-	1	-	1901094-3	SPACER, FEEDER	198
-	1	1	1	1752354-6	STANDOFF, HOLD-DOWN	180
-	1	1	1	2-1976053-6	LOCATER BLOCK, TERMINAL	179
-	1	1	1	1-1633723-9	CRIMPER, WIRE O	178
-	1	1	1	6-993111-6	PIN, SLOTTED SPRING 3.0 X 14.0	177
-	1	1	1	8-22280-7	SPRING, COMPRESSION	176
-	1	1	1	1752353-2	GUIDE PIN, HOLDDOWN	175
-	1	1	1	1901680-2	GUIDE PIN, HOLDDOWN	174
-	-	-	2	21045-3	RING, RETAIN, EXTERN, 3/16 CRESCENT	172
-	1	1	1	994969-1	MAGNET, RARE EARTH HIGH ENERGY	166
-	REF	REF	REF	994970-2	COUNTER, MAGNETIC	164
-	-	-	1	240638-1	SPRING, FEED FINGER	163
-	1	1	1	8-21084-1	O-RING, .801 ID, .070 DIA. MAT.	152
-	-	-	1	2119641-2	FEED CAM, AIR FEED	151
-	1	1	1	2119798-2	DETENT PIN	145
-	1	1	1	2079383-8	SCR, BHSC, RoHS (M4 X 16)	144
-	4	4	4	2168400-5	SHCS, LOW HEAD, RoHS, M4 X 20	143
-	1	1	1	1-2119656-0	APPLICATOR BASIC ASSEMBLY, SF	141
-	1	1	1	2161312-1	RAM, STEPPED, ASIAN STYLE, SIDE FEED	140
-	1	1	1	2119092-2	BOLT, ADJUSTMENT	139
-	-	-	1	3-23627-7	PIN, RETAIN, GRVD, 3/16 X .854	137
-	-	-	1	2119799-1	HOLDER, FEED FINGER, AF	136
-	-	REF	-	SEE NOTE 4	MEMORY CHIP, PROGRAMMED	135
-	-	1	-	1633743-1	SERVO FEED LATCH ASM	133
-	-	REF	-	2119944-1	FEED FINGER ASSEMBLY, SF	117
-	1	1	1	318563-1	GUARD, FRONT CHIP	89
-	1	1	1	455888-6	SPACER, CRIMPER	82
-	1	1	1	2119956-1	DOCUMENTATION PACKAGE	71
-	1	1	1	2119791-5	DEPRESSOR, WIRE	70
-	1	-	1	2119740-1	TAG, IDENTIFICATION	67
-	2	2	2	2168078-1	SCREW, DRIVE, RH, RoHS, 2 x .188	66
-	1	1	1	2119793-1	LIMITER, ADJUSTMENT BOLT	63
-	3	3	3	992763-5	SCR, SET, SOC, CONE POINT, M3 X 4.0	62
-	-	-	1	5-18022-5	SCR, HEX HD CAP, M4 X 6.0	59
-	-	-	1	1338683-8	FEED PAWL	56
-	1	1	1	1-5018030-0	NUT, HEX, REG, RoHS, M3.5	52
-	1	1	1	1901681-8	HOLDDOWN, TERMINAL	51
-	-	-	1	18023-9	SCR, SKT HD CAP M4 X 6.0	49
-	1	1	1	1-2079383-5	SCR, BHSC, RoHS (M8 X 40)	41
-	1	1	1	2119645-1	DISC, NUMBERED FA WIRE ADJUSTMENT	40
-	1	1	1	2119957-1	APPLICATOR SHIM PACK	39
-	1	1	1	2119644-4	RAM WASHER, PRECISION	38
-	1	1	1	1803308-1	SUPPORT, TERMINAL	34
-	2	2	2	2079383-5	SCR, BHSC, RoHS (M4 X 20)	33
-	1	1	1	2161328-1	HEX HEAD, FLANGED, M5 X 8mm LONG	32
-	1	1	1	1-1320908-0	SPACER, STRIP GUIDE	30
-	1	1	1	2119959-1	ASSEMBLY, STRIP GUIDE	29
-	1	1	1	1320928-2	STRIP GUIDE	24
-	1	1	1	2119806-1	INSERT, SHEAR	13
-	1	1	1	3-22280-3	SPRING, COMPRESSION	12
-	1	1	1	1-356885-4	STOP, SHEAR	11
-	1	1	1	2-2119805-1	SHEAR HOLDER, FRONT	10
-	1	1	1	1803095-6	FLOATING SHEAR, FRONT	9
-	1	1	1	1803160-7	ANVIL	8
-	-	-	-	-	-	7
-	-	-	-	-	-	6
-	1	1	1	1-2119757-2	DEPRESSOR, SHEAR	5
-	1	1	1	2-238011-6	BLOCK, CRIMPER SPACER	4
-	1	1	1	9-1633966-0	CRIMPER, INSULATION O	3
-	1	1	1	455888-9	SPACER, CRIMPER	2
-	1	1	1	1-1633723-7	CRIMPER, WIRE O	1
-77	-27	-25	-22	PART NO	DESCRIPTION	ITEM NO

PACIFIC VERSION
Shown on sheets 3 of 4 & 4 of 4
(Atlantic version shown on sheets 1 of 4 & 2 of 4)

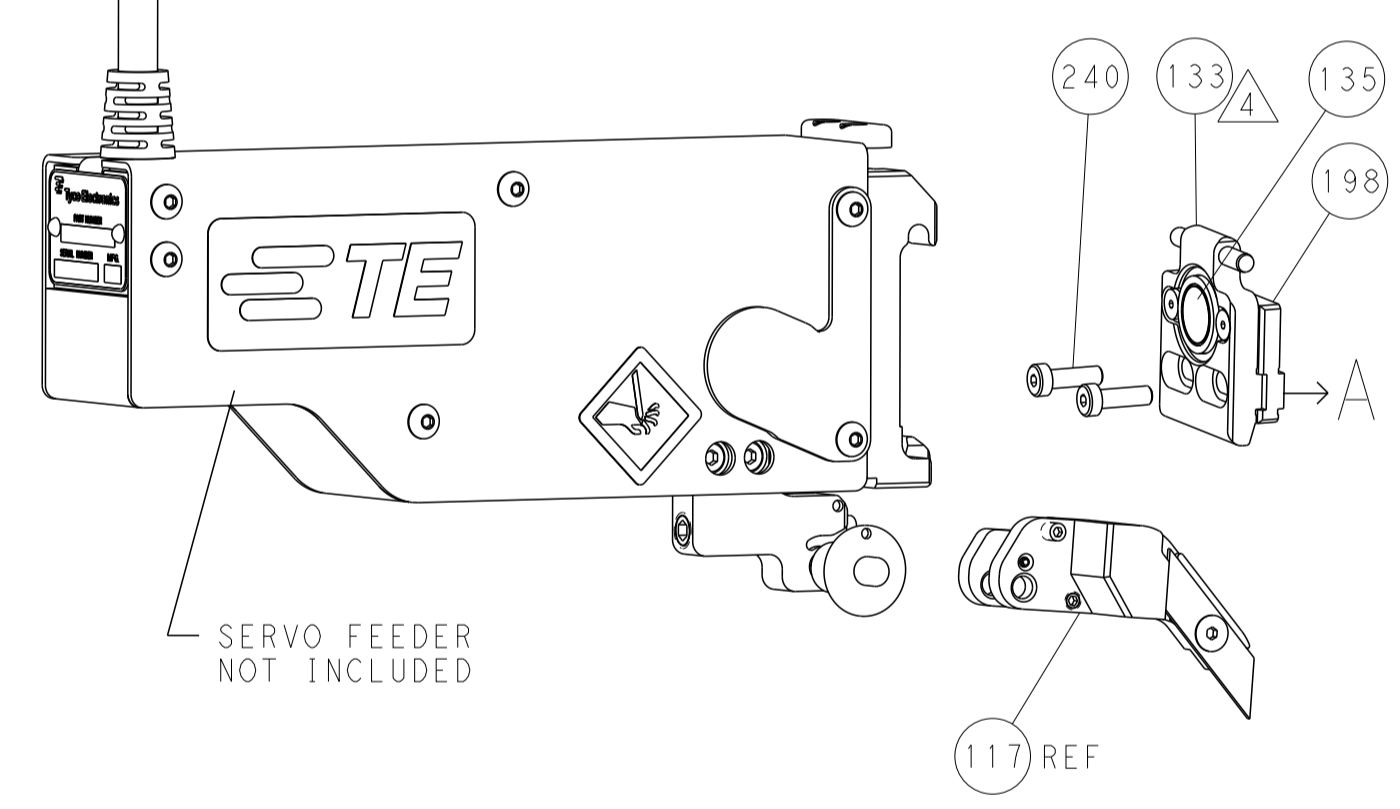
DIMENSIONS:		TOLERANCES UNLESS OTHERWISE SPECIFIED:		DWG: M. RILEY 29JUL2016		CHK: T. ELBIN 29JUL2016		APVD: J. DEGRANGE 29JUL2016		NAME: Ocean Side Feed Applicator	
mm	0 PLC ±	1 PLC ±	2 PLC ±	3 PLC ±	4 PLC ±	ANGLES ±	FINISH ±	APPLICATOR SPEC	SIZE	CAGE CODE	DRAWING NO
MATERIAL								WEIGHT	A1	00779	2836180
Customer Accessible Production Drawing								SCALE	1:2	SHEET	3 of 4
								REV	3		

LOC	DIST	REVISIONS					
		P	LTN	DESCRIPTION	DATE	DWN	APVD
-	-	-	-	SEE SHEET 1	-	-	-

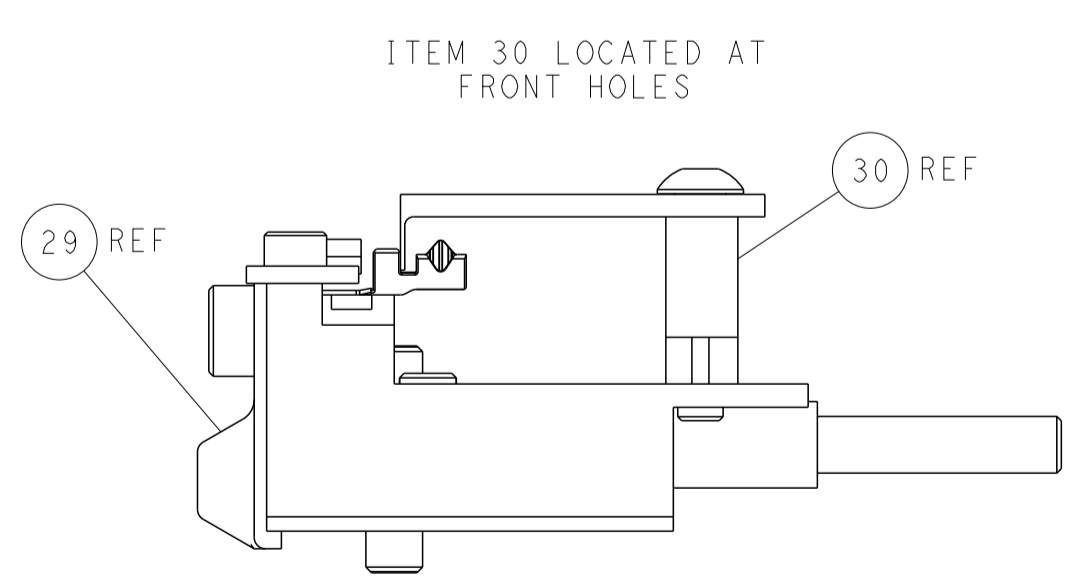
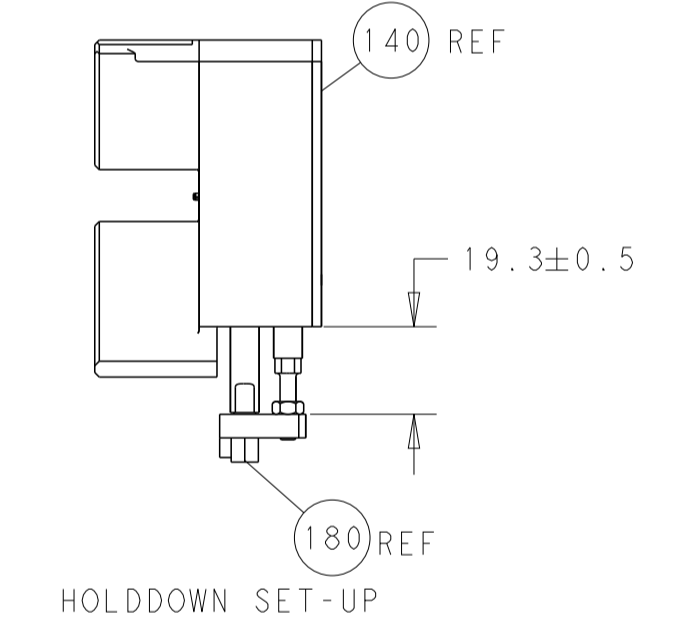
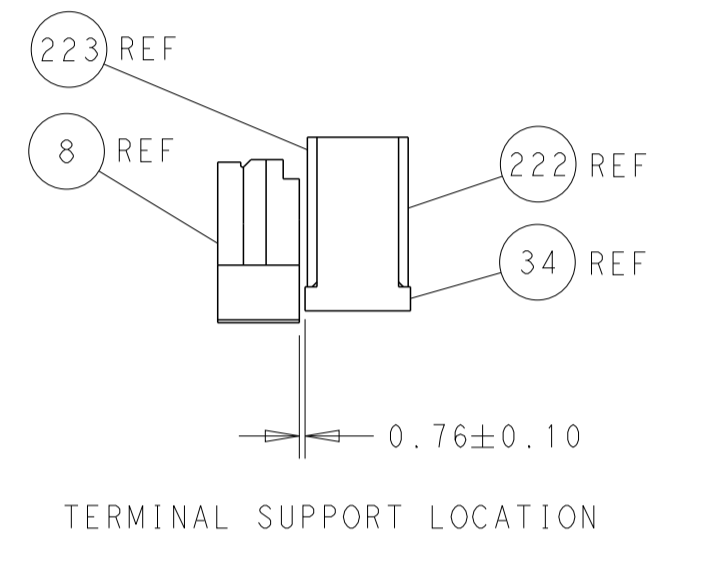
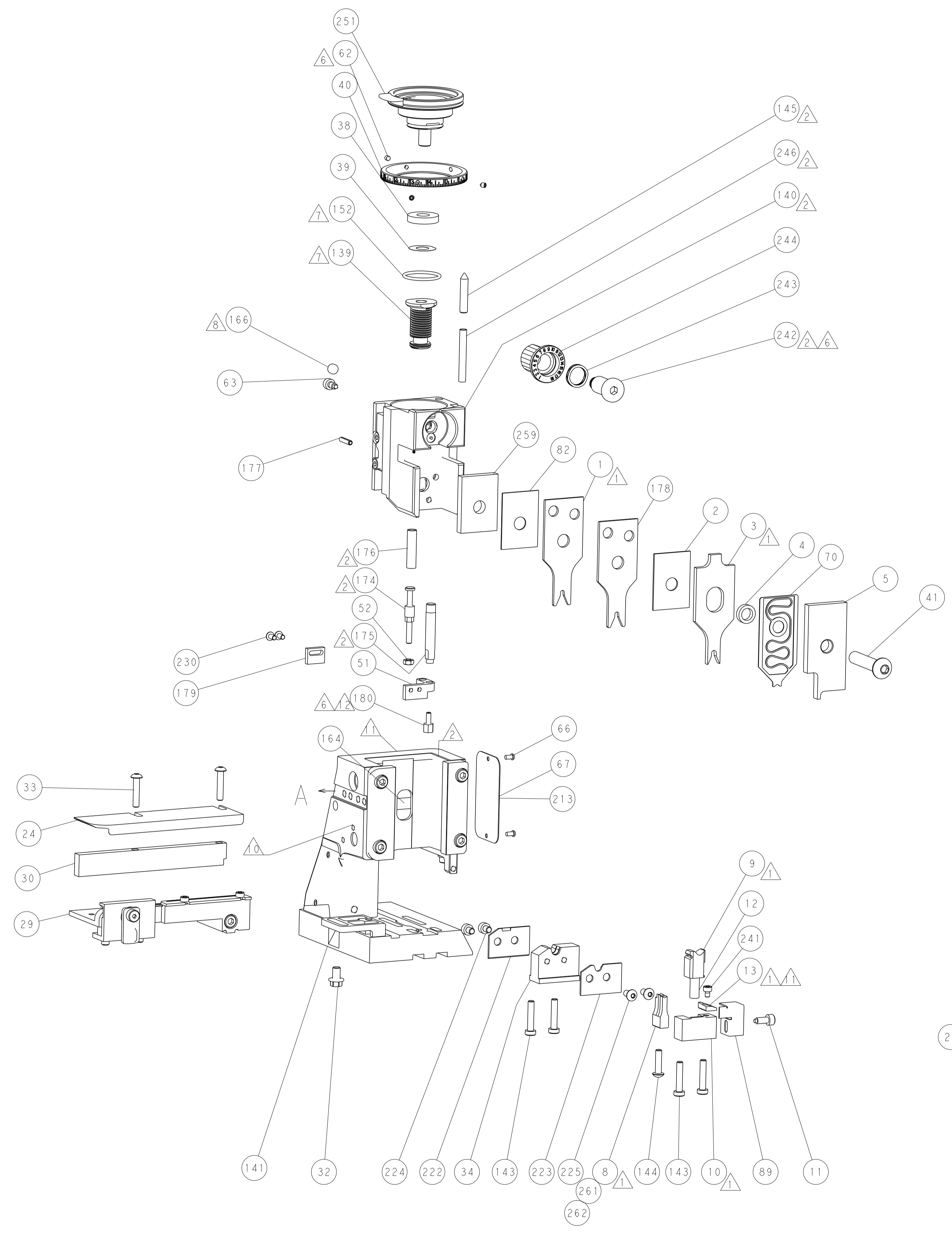
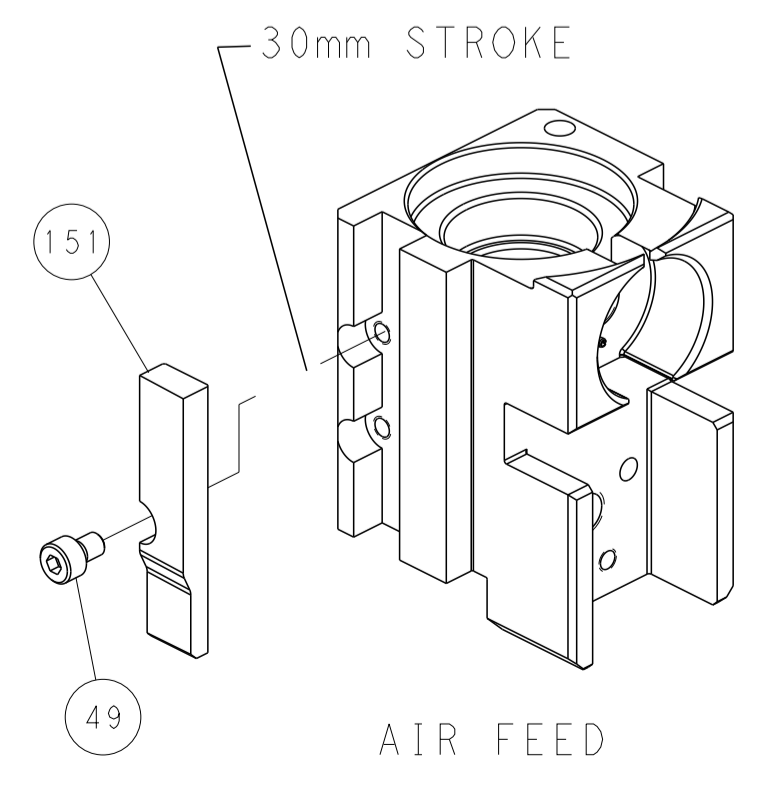
FEED TYPE PNEUMATIC



SERVO LATCH PLATE



CAM POSITION



PACIFIC VERSION
 Shown on sheets 3 of 4 & 4 of 4
 (Atlantic version shown on sheets 1 of 4 & 2 of 4)

<small>THIS DRAWING IS UNPUBLISHED. RELEASED FOR PUBLICATION. ALL RIGHTS RESERVED. © 2016 BY TYCO ELECTRONICS CORPORATION. THIS DRAWING IS THE PROPERTY OF TYCO ELECTRONICS CORPORATION AND IS NOT TO BE REPRODUCED OR TRANSMITTED IN ANY FORM OR BY ANY MEANS, ELECTRONIC OR MECHANICAL, INCLUDING PHOTOCOPYING, RECORDING, OR BY ANY INFORMATION STORAGE AND RETRIEVAL SYSTEM, WITHOUT THE WRITTEN PERMISSION OF TYCO ELECTRONICS CORPORATION.</small>		DWN: M. RILEY 29JUL2016 CHK: T. ELBIN 29JUL2016 APVD: J. DEGRANGE 29JUL2016	
DIMENSIONS: mm TOLERANCES UNLESS OTHERWISE SPECIFIED: 0 PLC ± 1 PLC ± 2 PLC ± 3 PLC ± 4 PLC ± ANGLES ± FINISH ±		NAME: Ocean Side Feed Applicator PRODUCT SPEC: APPLICATION SPEC: SIZE: A1 CAGE CODE: 00779 DRAWING NO: 2836180 WEIGHT:	
MATERIAL:		RESTRICTED TO: Customer Accessible Production Drawing SCALE: 1:2 SHEET: 4 of 4 REV: 3	