

ATLANTIC VERSION TERMINATOR INTERFACE ADAPTER	PART NUMBER	REVISION	DESCRIPTION	FEED TYPE	CONVERT TO	PART NUMBERS REQUIRED					
	2836165-1	A	FINE CRIMP HEIGHT ADJUST	MECHANICAL	PNEUMATIC FEED	2119950-1	1338685-1	5-18022-5	2119641-1	2119799-1	2063440-1
	2836165-2	A	FINE CRIMP HEIGHT ADJUST	PNEUMATIC	SERVO LATCH PLATE	2119951-1	-	8-2836165-5	1901094-3	-	2168400-6 (QUANTITY 2)
					SMART APPLICATOR	2161326-1	-	8-2836165-4	-	-	
					MECHANICAL FEED	2119949-1	1338685-1	5-18022-5	2119653-1	-	-
	2836165-5	A	FINE CRIMP HEIGHT ADJUST	SERVO LATCH PLATE	SERVO LATCH PLATE	2119951-1	-	8-2836165-5	1901094-3	-	2168400-6 (QUANTITY 2)
					SMART APPLICATOR	2161326-1	-	8-2836165-4	-	-	
	2836165-6	A	NON-CRIMP HEIGHT ADJUST	SERVO LATCH PLATE	-	-	-	-	-	-	-
2836165-7	A	FINE CRIMP HEIGHT ADJUST	NONE	-	-	-	-	-	-	-	-
7-2836165-7	A	CRIMP TOOLING KIT	-	-	-	-	-	-	-	-	-

APPLICATOR DATA		
CRIMP	SIZE	TYPE
WIRE	1.57 mm [.062]	F
INSUL	2.79 mm [.110]	F

APPLICATOR INSTRUCTIONS  
408-10389

TERMINAL DATA: DSQ TERMINAL	TE CRIMP SPECIFICATION
TERMINAL NAME: DSQ TERMINAL	
WIRE STRIP LENGTH 3.12-3.88 mm [.123-.153 IN]	INSULATION DIAMETER RANGE Ø 2.33mm MAX[.092 IN MAX]
TERMINAL APPLICATION SPECIFICATION NONE	
TERMINALS APPLIED	
TE TERMINAL	DSQ TERMINAL
2113945-1	9308TPR-N2

WIRE SIZE	CRIMP HEIGHT mm [INCH]	CRIMP HEIGHT REFERENCE SETTING
18 AWG	1.35+/-0.05 [.053+/- .002]	7.2
20 AWG	1.23+/-0.05 [.048+/- .002]	9.0
22 AWG	1.13+/-0.05 [.044+/- .002]	10.1

- 1 RECOMMENDED SPARE PARTS
- 2 GREASE BEARING SURFACES LIGHTLY
- 3 LUBRICATE DAILY PER THE APPLICATOR INSTRUCTION SHEET SUPPLIED WITH THE APPLICATOR.
- 4 APPLICATOR SPECIFIC DATA TO BE ENTERED INTO BLANK MEMORY CHIP AT ASSEMBLY. SEE BELOW FOR PART NUMBER:  
 MECHANICAL FEED WITH "SMART APPLICATOR" CONVERSION: 8-2836165-4  
 PNEUMATIC FEED WITH "SMART APPLICATOR" CONVERSION: 8-2836165-4  
 SERVO FEED WITH "FINE CRIMP HEIGHT ADJUST": 8-2836165-5  
 SERVO FEED WITH "NON-CRIMP HEIGHT ADJUST": 8-2836165-6
- 5 ADJUSTMENT OF THE STRIPPER MAY BE REQUIRED WHEN MOVING THE APPLICATOR BETWEEN BENCH AND LEADMAKER APPLICATIONS.
- 6 APPLY PART NUMBER 1-23419-5 LOCTITE TO THREADS OF ITEM 62. APPLY PART NUMBER 2-23419-6 LOCTITE TO THREADS OF ITEM 242. FOR -6 ONLY APPLY PART NUMBER 1-23419-5 LOCTITE TO THREADS OF ITEM 37.
- 7 GREASE THREADS, GROOVE AND O-RING ON ITEMS 35 & 252.
- 8 MAGNET, ITEM 166 MUST BE ORIENTED CORRECTLY IN ORDER TO PROPERLY ACTUATE THE COUNTER.
- 9 CRIMP HEIGHT REFERENCE SETTING WAS THE SETTING USED WHEN THE APPLICATOR WAS QUALIFIED AT THE FACTORY. ADJUSTMENT MAY BE NECESSARY WHEN RUNNING APPLICATOR IN THE FIELD.
- 10 SPARE FEED CAM STORAGE LOCATION REFER TO INSTRUCTION SHEET FOR ADDITIONAL INFORMATION.
- 11 TO CONVERT THE APPLICATOR TO A NON-CARRIER CUTTING STYLE, REMOVE ITEM 13 AND ATTACH TO THE LOCATION ON THE BACK SIDE OF THE HOUSING. REFER TO INSTRUCTION SHEET FOR ADDITIONAL INFORMATION.
- 12 WHEN ASSEMBLING A NON CRIMP HEIGHT ADJUST APPLICATOR (-6) USE SHIMS FROM ITEM 260 TO ACHIEVE A NOMINAL SHIM HEIGHT OF 4.45.

**\*WARNING**  
ON INSTALLATION, SET WIRE DISC, ITEM 40 TO LARGEST WIRE SIZE SETTING. USE OF SETTINGS BELOW MINIMUM REQUIRED CRIMP HEIGHT SETTING WILL CAUSE DAMAGE TO CRIMP TOOLING.

**ATLANTIC VERSION**  
Shown on sheets 1 of 4 & 2 of 4  
(Pacific version shown on sheets 3 of 4 & 4 of 4)

SET UP GAUGE	LOC	DIST	REVISIONS			
2119599-1	A	66	P	DATE	BY	APP'D
			1	DEVELOPMENT	28JAN2016	JH UG
			A	RELEASED	01MAR2016	JH TE

P	LTN	DESCRIPTION	DATE	OWN	APP'D
-	-	1 - - -	2119957-2	APPLICATOR SHIM PACK	260
-	1	- 1 1 1	8-21084-0	O-RING, .676 ID, .070 DIA. MAT.	252
-	-	- - 1 -	2119640-1	PUSH ROD, AIR FEED	250
-	-	- - 1 -	2079988-1	BUSHING, LCH5-12, MISUMI	249
-	-	- - 1 -	2119641-1	FEED CAM, AIR FEED	248
-	1	- 1 1 1	2119798-1	DETENT PIN	247
-	1	- 1 1 1	1-22279-3	SPRING, COMPRESSION	246
-	-	1 - - -	2119758-1	RAM, AMP STYLE, SIDE FEED, NON-ADJ.	245
-	1	1 1 1 1	2119082-4	CAM, SNAIL, INSULATION ADJUSTMENT	244
-	1	1 1 1 1	2079764-1	WASHER, WAVE SPRING, CREST-TO-CREST	243
-	1	1 1 1 1	2119083-1	RETAINER, INSULATION DIAL	242
-	1	1 1 1 1	7-18023-7	SCR, SKT HD CAP M3 X 4.0	241
-	-	2 2 - -	2168400-6	SHCS, LOW HEAD, RoHS, M5 X 16	240
-	-	- - - 1	2119580-1	MECHANICAL FEED ASSEMBLY	239
-	-	- - 1 -	2063440-1	AIR FEED MODULE	238
-	-	1 1 - -	2119740-2	TAG IDENTIFICATION	213
-	-	1 1 - -	1901094-3	SPACER, FEEDER	198
-	-	- - 2 -	21045-3	RING, RETAIN, EXTERN, 3/16 CRESCENT	172
-	1	1 1 1 1	994969-1	MAGNET, RARE EARTH HIGH ENERGY	166
-	REF	REF REF REF REF	994970-2	COUNTER, MAGNETIC	164
-	-	- - 1 -	240638-1	SPRING, FEED FINGER	163
-	-	- - 1 -	3-23627-7	PIN, RETAIN, GRVD, 3/16 X .854	137
-	-	- - 1 -	2119799-1	HOLDER, FEED FINGER, AF	136
-	-	REF REF - -	SEE NOTE 4	MEMORY CHIP, PROGRAMMED	135
-	-	1 1 - -	1633743-1	SERVO FEED LATCH ASM	133
-	-	REF REF - -	2119944-1	FEED FINGER ASSEMBLY, SF	117
-	1	1 1 1 1	455888-6	SPACER, CRIMPER	82
-	1	1 1 1 1	2119956-1	DOCUMENTATION PACKAGE	71
-	1	- - 1 1	2119740-1	TAG IDENTIFICATION	67
-	2	2 2 2 2	2168078-1	SCREW, DRIVE, RH, RoHS, 2 x .188	66
-	1	- 1 1 1	2119793-1	LIMITER, ADJUSTMENT BOLT	63
-	3	- 3 3 3	992763-5	SCR, SET, SOC, CONE POINT, M3 X 4.0	62
-	1	1 1 1 1	2079383-4	SCR, BHSC, RoHS (M4 X 8)	60
-	-	- - 1 1	5-18022-5	SCR, HEX HD CAP, M4 X 6.0	59
-	-	- - 1 1	1338685-1	PAWL, FEED	56
-	2	2 2 2 2	2168400-1	SHCS, LOW HEAD, RoHS, M4 X 12	54
-	2	2 2 2 2	1-2168083-0	SCR, SKT HD CAP, RoHS, M4 X 10	53
-	1	1 1 1 1	5018030-1	NUT, HEX, REG, RoHS, M3	52
-	1	1 1 1 1	811242-5	BUMPER, HOLD DOWN	51
-	1	1 1 1 1	690753-2	SPACER, TONKER	50
-	-	- - 1 2	18023-9	SCR, SKT HD CAP M4 X 6.0	49
-	-	- - - 1	2119652-1	FEED CAM, PRE FEED	48
-	-	- - - 1	2119653-1	FEED CAM, POST FEED	47
-	1	1 1 1 1	2119656-9	APPLICATOR BASIC ASSEMBLY, SF	46
-	1	- 1 1 1	2119370-1	RAM, AMP STYLE, SIDE FEED	44
-	1	1 1 1 1	2079383-7	SCR, BHSC, RoHS (M8 X 25)	41
-	1	- 1 1 1	2119645-1	DISC, NUMBERED FA WIRE ADJUSTMENT	40
-	1	- 1 1 1	2119957-1	APPLICATOR SHIM PACK	39
-	1	1 1 1 1	1-2119644-2	RAM WASHER, PRECISION	38
-	1	1 1 1 1	2119085-1	FA HEAD, ATLANTIC STYLE	37
-	1	- 1 1 1	2119092-1	BOLT, ADJUSTMENT	35
-	2	2 2 2 2	2079383-5	SCR, BHSC, RoHS (M4 X 20)	33
-	1	1 1 1 1	2161328-1	HEX HEAD, FLANGED, M5 X 8mm LONG	32
-	1	1 1 1 1	1320908-6	SPACER, STRIP GUIDE	30
-	1	1 1 1 1	2119959-1	ASSEMBLY, STRIP GUIDE	29
-	1	1 1 1 1	455888-3	SPACER, CRIMPER	28
-	1	1 1 1 1	1320928-2	STRIP GUIDE	24
-	1	1 1 1 1	2168083-2	SCR, SKT HD CAP, RoHS, M4 X 8.0	21
-	2	2 2 2 2	1-18028-2	WASHER, FLAT, REG M4	20
-	1	1 1 1 1	2119533-1	STRIPPER, SIDE FEED	19
-	1	1 1 1 1	2119806-1	INSERT, SHEAR	13
-	1	1 1 1 1	3-22280-3	SPRING, COMPRESSION	12
-	1	1 1 1 1	1-356885-4	STOP, SHEAR	11
-	1	1 1 1 1	2119805-1	SHEAR HOLDER, FRONT	10
-	1	1 1 1 1	1803095-1	FLOATING SHEAR, FRONT	9
-	1	1 1 1 1	3-1803058-4	ANVIL, COMBINATION	8
-	-	- - - -	-	-	7
-	-	- - - -	-	-	6
-	1	1 1 1 1	2119757-4	DEPRESSOR, SHEAR	5
-	1	1 1 1 1	238011-4	BLOCK, CRIMPER SPACER	4
-	1	1 1 1 1	4-2119582-5	CRIMPER, INSULATION F PREMIUM	3
-	1	1 1 1 1	455888-5	SPACER, CRIMPER	2
-	1	1 1 1 1	5-456403-7	CRIMPER, WIRE PREMIUM	1

DIMENSIONS:	TOLERANCES UNLESS OTHERWISE SPECIFIED:	OWN	CHK	DATE
mm	0 PLC ± 1 PLC ± 2 PLC ± 3 PLC ± 4 PLC ± ANGLES ±	J. HOU	L. ZHANG	28JAN2016
MATERIAL:	FINISH:	APVD	U. GUO	28JAN2016
Customer Accessible Production Drawing		SCALE	SHEET	REV
		1:2	1 of 4	A

LOC		DIST		REVISONS			
A	66	P	LTM	DESCRIPTION	DATE	OWN	APVD
		-		SEE SHEET 1			

### FEED TYPE MECHANICAL



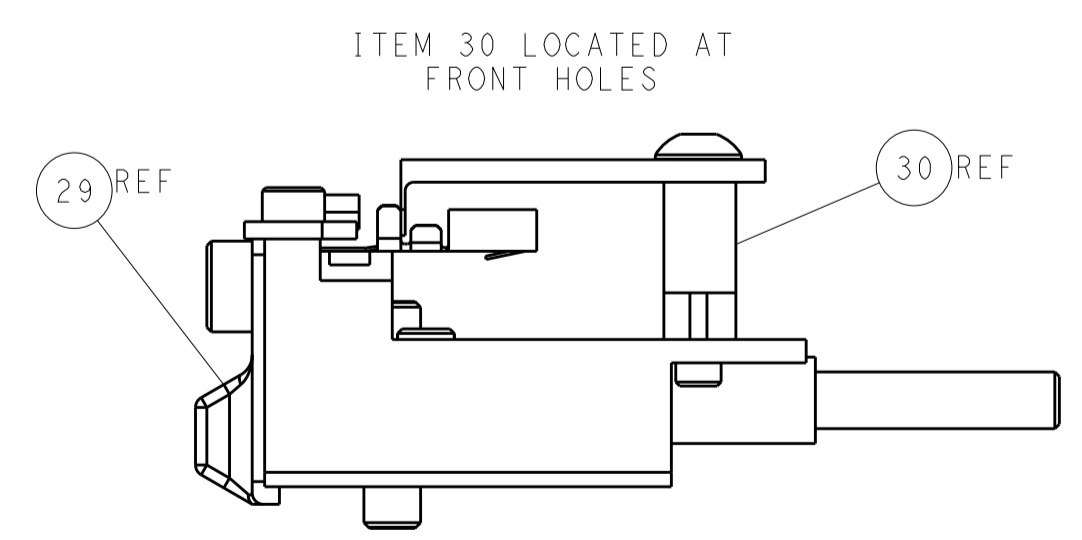
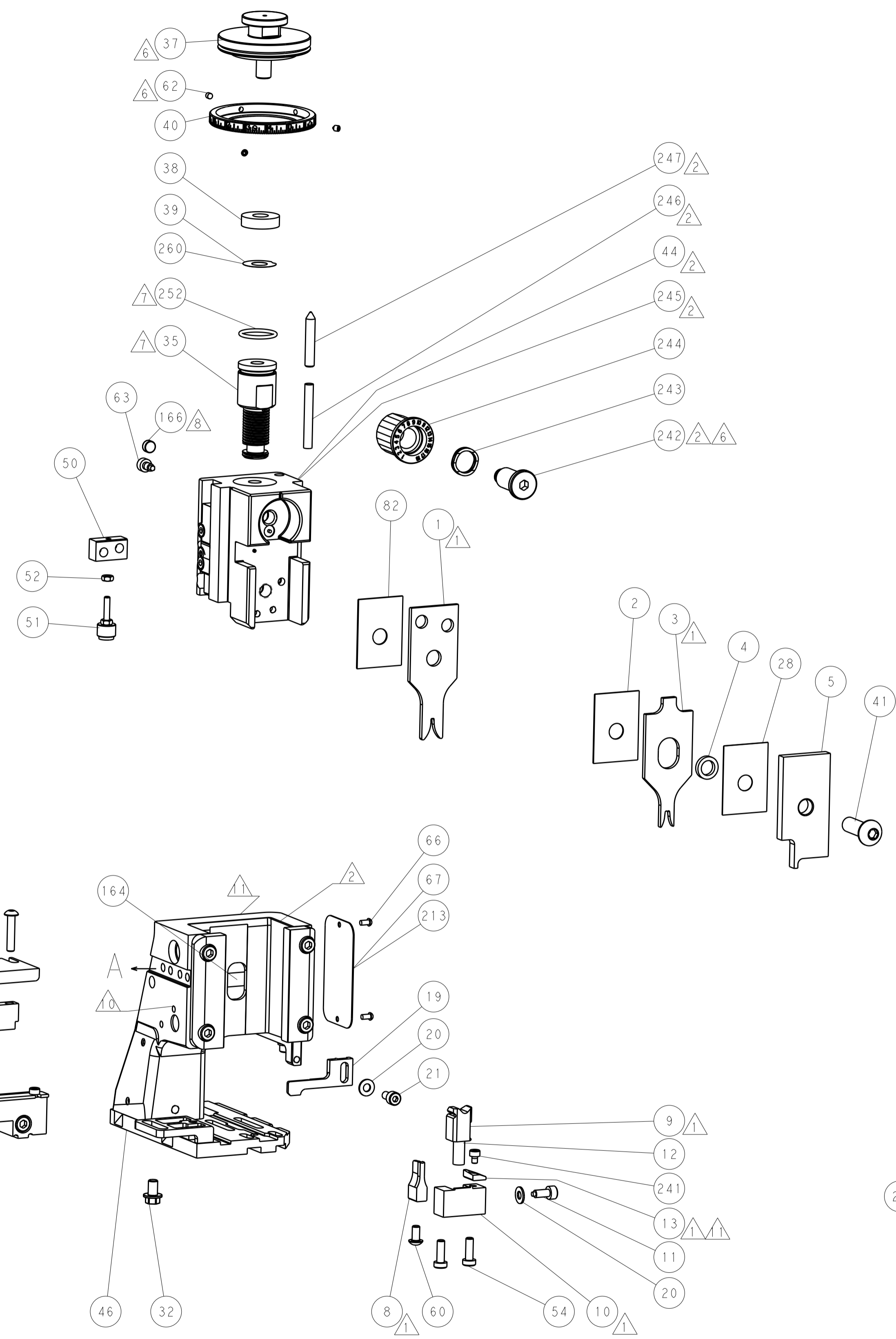
### PNEUMATIC



### SERVO LATCH PLATE



### CAM POSITIONS



**ATLANTIC VERSION**  
 Shown on sheets 1 of 4 & 2 of 4  
 (Pacific version shown on sheets 3 of 4 & 4 of 4)

DIMENSIONS:		TOLERANCES UNLESS OTHERWISE SPECIFIED:		DWG: J. HOU 28JAN2016		TE Connectivity	
mm	0 PLC ±	1 PLC ±	2 PLC ±	3 PLC ±	4 PLC ±	5 PLC ±	Harrisburg, PA 17105-3608
MATERIAL:		FINISH:		CHK: L. ZHANG 28JAN2016		NAME: Ocean Side Feed Applicator	
				APVD: H. GUO 28JAN2016		PRODUCT SPEC:	
						APPLICATION SPEC:	
				WEIGHT:		SIZE: CAGE CODE: DRAWING NO: RESTRICTED TO	
				A1 00779 ©=2836165		Customer Accessible Production Drawing	
				SCALE: 1:2		SHEET 2 OF 4 REV A	

PACIFIC VERSION TERMINATOR INTERFACE ADAPTER	PART NUMBER	REVISION	DESCRIPTION	FEED TYPE	APPLICATOR STYLE CONVERSION CHART						
					CONVERT TO	PART NUMBERS REQUIRED					
	2-2836165-1	A	FINE CRIMP HEIGHT ADJUST	MECHANICAL	PNEUMATIC FEED	2119950-1	1338685-1	5-18022-5	2119641-2	2119799-1	2063440-1
					SERVO LATCH PLATE	2119951-1	-	8-2836165-5	1901094-3	-	2168400-6 (QUANTITY 2)
					SMART APPLICATOR	2161326-1	-	8-2836165-4	-	-	
	2-2836165-2	A	FINE CRIMP HEIGHT ADJUST	PNEUMATIC	MECHANICAL FEED	2119949-1	1338685-1	5-18022-5	2119653-2	-	-
					SERVO LATCH PLATE	2119951-1	-	8-2836165-5	1901094-3	-	2168400-6 (QUANTITY 2)
					SMART APPLICATOR	2161326-1	-	8-2836165-4	-	-	
	2-2836165-5	A	FINE CRIMP HEIGHT ADJUST	SERVO LATCH PLATE <sup>4</sup>	MECHANICAL FEED	2119949-1	1338685-1	5-18022-5	2119653-2	-	-
					PNEUMATIC FEED	2119950-1	1338685-1	5-18022-5	2119641-2	2119799-1	2063440-1
	2-2836165-7	A	FINE CRIMP HEIGHT ADJUST	NONE	-	-	-	-	-	-	-
	7-2836165-7	A	CRIMP TOOLING KIT	-	-	-	-	-	-	-	-

APPLICATOR DATA		
CRIMP	SIZE	TYPE
WIRE	1.57 mm [.062]	F
INSUL	2.79 mm [.110]	F
APPLICATOR INSTRUCTIONS 408-10389		

TERMINAL DATA: DSO TERMINAL		TE CRIMP SPECIFICATION	
TERMINAL NAME: DSO TERMINAL			
WIRE STRIP LENGTH		INSULATION DIAMETER RANGE	
3.12-3.88 mm [.123-.153 IN]		2.33mm MAX[.092 IN MAX]	
TERMINAL APPLICATION SPECIFICATION	NONE	-	-
TERMINALS APPLIED			
TE TERMINAL	DSO TERMINAL	TE TERMINAL	DSO TERMINAL
2113945-1	9308TPR-N2		

WIRE SIZE	CRIMP HEIGHT mm [INCH]	CRIMP HEIGHT REFERENCE SETTING
18 AWG	1.35+/-0.05 [0.053+/-0.002]	7.2
20 AWG	1.23+/-0.05 [0.048+/-0.002]	9.0
22 AWG	1.13+/-0.05 [0.044+/-0.002]	10.1

- RECOMMENDED SPARE PARTS
- GREASE BEARING SURFACES LIGHTLY
- 3. LUBRICATE DAILY PER THE APPLICATOR INSTRUCTION SHEET SUPPLIED WITH THE APPLICATOR.
- APPLICATOR SPECIFIC DATA TO BE ENTERED INTO BLANK MEMORY CHIP AT ASSEMBLY. SEE BELOW FOR PART NUMBER:  
 MECHANICAL FEED WITH "SMART APPLICATOR" CONVERSION: 8-2836165-4  
 PNEUMATIC FEED WITH "SMART APPLICATOR" CONVERSION: 8-2836165-4  
 SERVO FEED WITH "FINE CRIMP HEIGHT ADJUST": 8-2836165-5
- 5. ADJUSTMENT OF THE STRIPPER MAY BE REQUIRED WHEN MOVING THE APPLICATOR BETWEEN BENCH AND LEADMAKER APPLICATIONS.
- APPLY PART NUMBER 1-23419-5 LOCTITE TO THREADS OF ITEM 62. APPLY PART NUMBER 2-23419-6 LOCTITE TO THREADS OF ITEM 242.
- GREASE THREADS, GROOVE AND O-RING ON ITEMS 139 & 152.
- MAGNET MUST BE ORIENTED CORRECTLY IN ORDER TO PROPERLY ACTUATE THE COUNTER.
- CRIMP HEIGHT REFERENCE SETTING WAS THE SETTING USED WHEN THE APPLICATOR WAS QUALIFIED AT THE FACTORY. ADJUSTMENT MAY BE NECESSARY WHEN RUNNING APPLICATOR IN THE FIELD.
- SPARE FEED CAM STORAGE LOCATION REFER TO INSTRUCTION SHEET FOR ADDITIONAL INFORMATION.
- TO CONVERT THE APPLICATOR TO A NON-CARRIER CUTTING STYLE, REMOVE ITEM 13 AND ATTACH TO THE LOCATION ON BACK SIDE OF THE HOUSING. REFER TO INSTRUCTION SHEET FOR ADDITIONAL INFORMATION.

**\*WARNING**  
 ON INSTALLATION, SET WIRE DISC, ITEM 40 TO LARGEST WIRE SIZE SETTING. USE OF SETTINGS BELOW MINIMUM REQUIRED CRIMP HEIGHT SETTING WILL CAUSE DAMAGE TO CRIMP TOOLING.

**PACIFIC VERSION**  
 Shown on sheets 3 of 4 & 4 of 4  
 (Atlantic version shown on sheets 1 of 4 & 2 of 4)

SET UP GAUGE	LOC	DIST	REVISIONS					
2119599-1	A	66	P	LTN	DESCRIPTION	DATE	OWN	APVD
			-	-	SEE SHEET 1	-	-	-

-	1	1	1	1	2119782-1	FINE ADJUST HEAD ASM, PACIFIC STYLE	251
-	-	-	1	-	2119640-1	PUSH ROD, AIR FEED	250
-	-	-	1	-	2079988-1	BUSHING, LCH5-12, MISUMI	249
-	1	1	1	1	1-22279-3	SPRING, COMPRESSION	246
-	1	1	1	1	2119082-4	CAM, SNAIL, INSULATION ADJUSTMENT	244
-	1	1	1	1	2079764-1	WASHER, WAVE SPRING, CREST-TO-CREST	243
-	1	1	1	1	2119083-1	RETAINER, INSULATION DIAL	242
-	1	1	1	1	7-18023-7	SCR, SKT HD CAP M3 X 4.0	241
-	-	2	-	-	2168400-6	SHCS, LOW HEAD, RoHS, M5 X 16	240
-	-	-	-	1	2119580-1	MECHANICAL FEED ASSEMBLY	239
-	-	-	1	-	2063440-1	AIR FEED MODULE	238
-	-	1	-	-	2119740-2	TAG, IDENTIFICATION	213
-	-	1	-	-	1901094-3	SPACER, FEEDER	198
-	-	-	2	-	21045-3	RING, RETAIN, EXTERN, 3/16 CRESCENT	172
-	1	1	1	1	994969-1	MAGNET, RARE EARTH HIGH ENERGY	166
-	REF	REF	REF	REF	994970-2	COUNTER, MAGNETIC	164
-	-	-	1	-	240638-1	SPRING, FEED FINGER	163
-	1	1	1	1	8-21084-1	O-RING, .801 ID, .070 DIA. MAT.	152
-	-	-	1	-	2119641-2	FEED CAM, AIR FEED	151
-	1	1	1	1	2119798-2	DETENT PIN	145
-	1	1	1	1	2079383-8	SCR, BHSC, RoHS (M4 X 16)	144
-	2	2	2	2	2168400-5	SHCS, LOW HEAD, RoHS, M4 X 20	143
-	-	-	-	1	2119653-2	FEED CAM, POST FEED	142
-	1	1	1	1	1-2119656-0	APPLICATOR BASIC ASSEMBLY, SF	141
-	1	1	1	1	2119650-1	RAM, ASIAN STYLE, SIDE FEED	140
-	1	1	1	1	2119092-2	BOLT, ADJUSTMENT	139
-	-	-	1	-	3-23627-7	PIN, RETAIN, GRVD, 3/16 X .854	137
-	-	-	1	-	2119799-1	HOLDER, FEED FINGER, AF	136
-	-	REF	-	-	SEE NOTE 4	MEMORY CHIP, PROGRAMMED	135
-	-	1	-	-	1633743-1	SERVO FEED LATCH ASM	133
-	-	REF	-	-	2119944-1	FEED FINGER ASSEMBLY, SF	117
-	1	1	1	1	455888-6	SPACER, CRIMPER	82
-	1	1	1	1	2119956-1	DOCUMENTATION PACKAGE	71
-	1	-	1	1	2119740-1	TAG, IDENTIFICATION	67
-	2	2	2	2	2168078-1	SCREW, DRIVE, RH, RoHS, 2 x .188	66
-	1	1	1	1	2119793-1	LIMITER, ADJUSTMENT BOLT	63
-	3	3	3	3	992763-5	SCR, SET, SOC, CONE POINT, M3 x 4.0	62
-	-	-	1	1	5-18022-5	SCR, HEX HD CAP, M4 X 6.0	59
-	-	-	1	1	1338685-1	PAWL, FEED	56
-	2	2	2	2	1-2168083-0	SCR, SKT HD CAP, RoHS, M4 X 10	53
-	1	1	1	1	5018030-1	NUT, HEX, REG, RoHS, M3	52
-	1	1	1	1	811242-5	BUMPER, HOLD DOWN	51
-	1	1	1	1	690753-2	SPACER, TONKER	50
-	-	-	1	2	18023-9	SCR, SKT HD CAP M4 X 6.0	49
-	-	-	-	1	2119652-1	FEED CAM, PRE FEED	48
-	1	1	1	1	2079383-7	SCR, BHSC, RoHS (M8 X 25)	41
-	1	1	1	1	2119645-1	DISC, NUMBERED FA WIRE ADJUSTMENT	40
-	1	1	1	1	2119957-1	APPLICATOR SHIM PACK	39
-	1	1	1	1	1-2119644-2	RAM WASHER, PRECISION	38
-	2	2	2	2	2079383-5	SCR, BHSC, RoHS (M4 X 20)	33
-	1	1	1	1	2161328-1	HEX HEAD, FLANGED, M5 x 8mm LONG	32
-	1	1	1	1	1320908-6	SPACER, STRIP GUIDE	30
-	1	1	1	1	2119959-1	ASSEMBLY, STRIP GUIDE	29
-	1	1	1	1	455888-3	SPACER, CRIMPER	28
-	1	1	1	1	1320928-2	STRIP GUIDE	24
-	1	1	1	1	2168083-2	SCR, SKT HD CAP, RoHS, M4 X 8.0	21
-	2	2	2	2	1-18028-2	WASHER, FLAT, REG M4	20
-	1	1	1	1	2119533-1	STRIPPER, SIDE FEED	19
-	1	1	1	1	2119806-1	INSERT, SHEAR	13
-	1	1	1	1	3-22280-3	SPRING, COMPRESSION	12
-	1	1	1	1	1-356885-4	STOP, SHEAR	11
-	1	1	1	1	2119805-1	SHEAR HOLDER, FRONT	10
-	1	1	1	1	1803095-1	FLOATING SHEAR, FRONT	9
-	1	1	1	1	3-1803058-4	ANVIL, COMBINATION	8
-	-	-	-	-	-	-	7
-	-	-	-	-	-	-	6
-	1	1	1	1	2119757-4	DEPRESSOR, SHEAR	5
-	1	1	1	1	238011-4	BLOCK, CRIMPER SPACER	4
-	1	1	1	1	4-2119582-5	CRIMPER, INSULATION F PREMIUM	3
-	1	1	1	1	455888-5	SPACER, CRIMPER	2
-	1	1	1	1	5-456403-7	CRIMPER, WIRE PREMIUM	1

DIMENSIONS:		TOLERANCES UNLESS OTHERWISE SPECIFIED:		DATE	
mm	0 PLC ±	1 PLC ±	2 PLC ±	28JAN2016	OWN
	3 PLC ±	4 PLC ±	ANGLES ±	28JAN2016	CHK
MATERIAL	FINISH	WEIGHT	SCALE	28JAN2016	APVD
			1:2		U. GUO

Customer Accessible Production Drawing	SCALE	SHEET	3 OF 4	REV	A
--	-------	-------	--------	-----	---

LOC		DIST		REVISIONS			
A	66	P	LTM	DESCRIPTION	DATE	OWN	APVD
		-	-	SEE SHEET 1	-	-	-

# FEED TYPE MECHANICAL



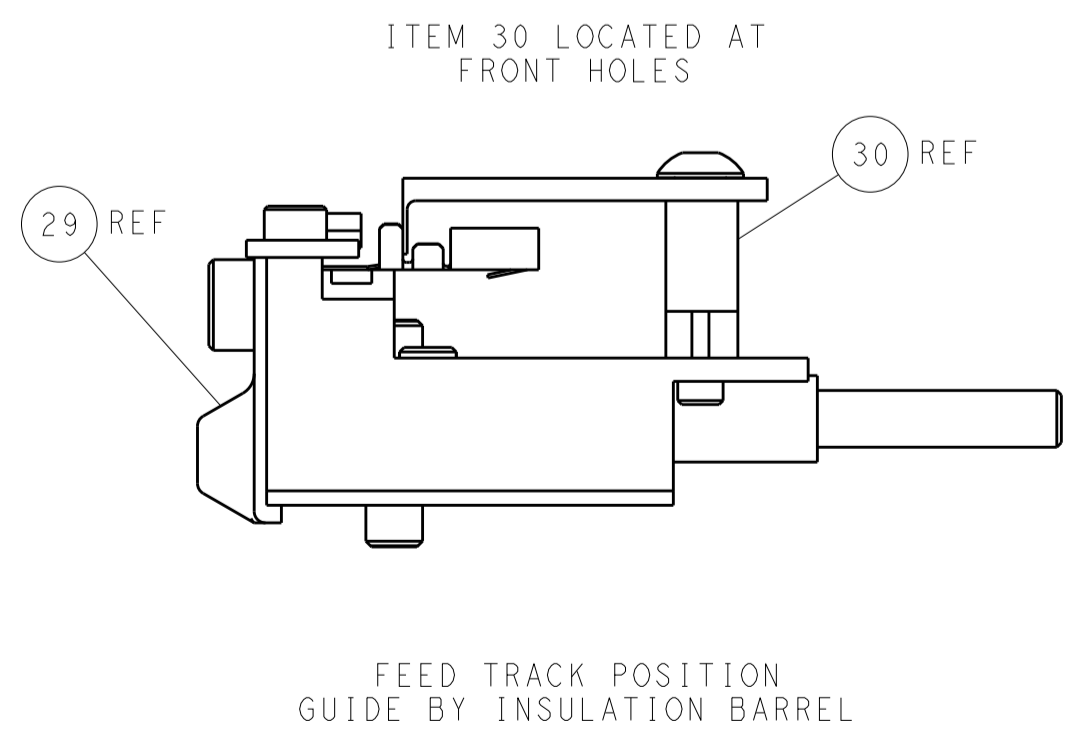
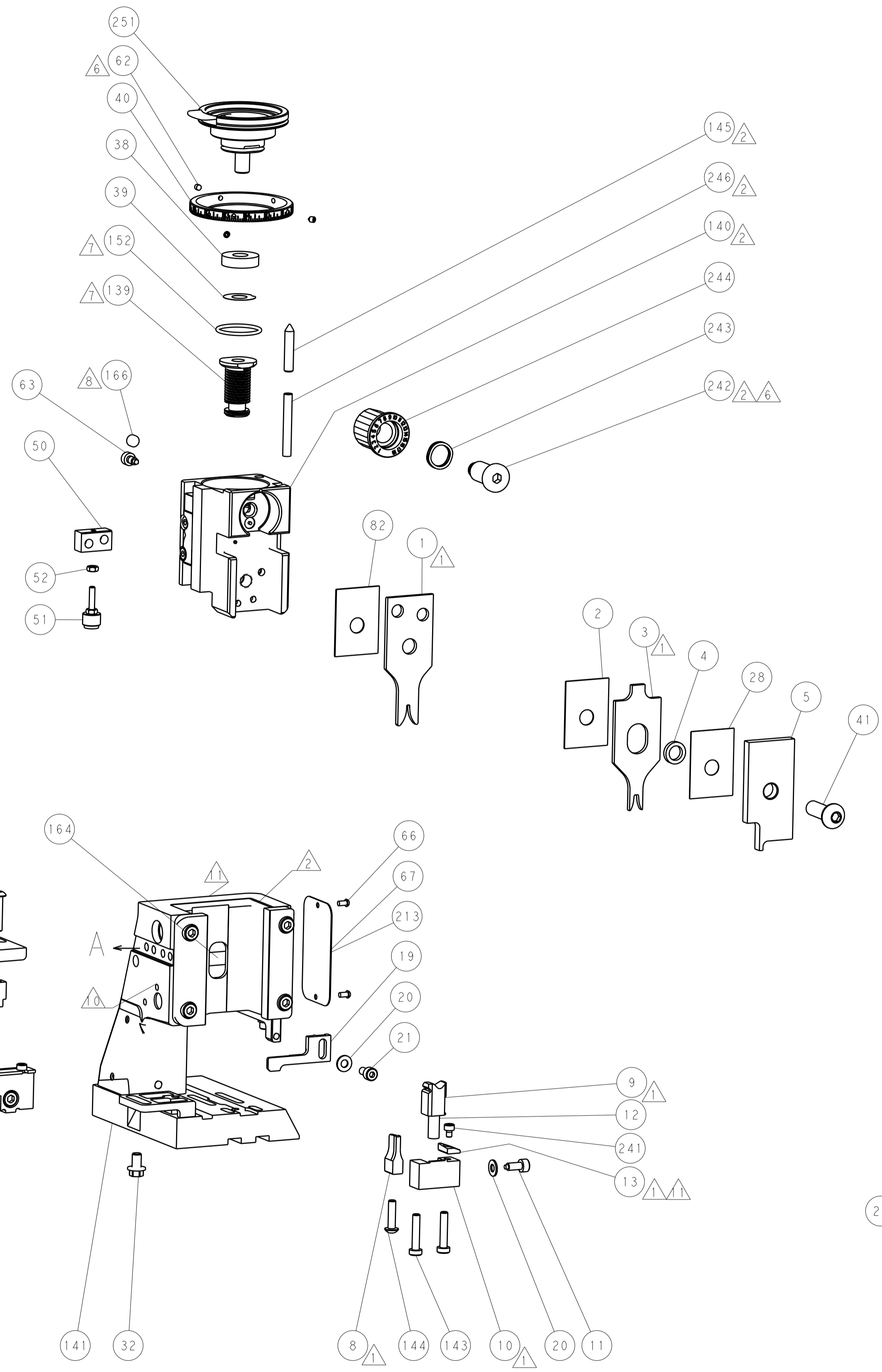
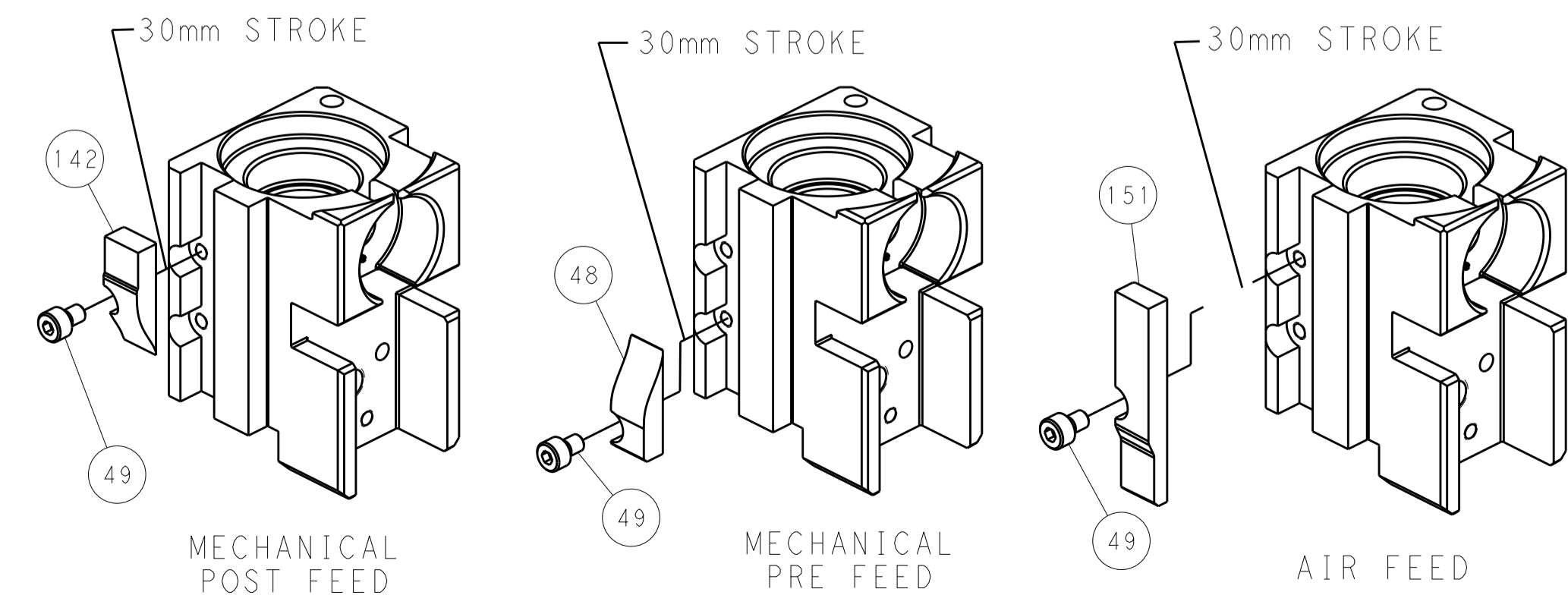
# PNEUMATIC



# SERVO LATCH PLATE



# CAM POSITIONS



**PACIFIC VERSION**  
 Shown on sheets 3 of 4 & 4 of 4  
 (Atlantic version shown on sheets 1 of 4 & 2 of 4)

DIMENSIONS:		TOLERANCES UNLESS OTHERWISE SPECIFIED:		DWG: J. HOU 28JAN2016		CHK: L. ZHANG 28JAN2016		APVD: H. GUO 28JAN2016		NAME: Ocean Side Feed Applicator	
mm	0 PLC	±		SIZE	CAGE CODE	DRAWING NO	RESTRICTED TO	STE TE Connectivity Harrisburg, PA 17105-3608			
	1 PLC	±		00779	2836165	4	Customer Accessible Production Drawing	SCALE: 1:2 SHEET 4 OF 4 REV A			
	2 PLC	±		Customer Accessible Production Drawing							
	3 PLC	±		Customer Accessible Production Drawing							
	4 PLC	±		Customer Accessible Production Drawing							
	ANGLES	±		Customer Accessible Production Drawing							
	FINISH	±		Customer Accessible Production Drawing							