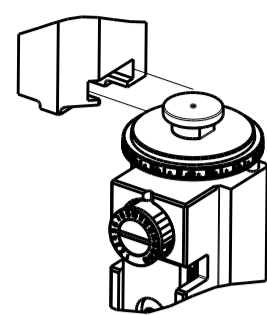


PART NUMBER	REVISION	DESCRIPTION	FEED TYPE
2836064-2	B	FINE CRIMP HEIGHT ADJUST	PNEUMATIC
7-2836064-2	B	PNEUMATIC AND CRIMP TOOLING KIT	PNEUMATIC
7-2836064-7	A	CRIMP TOOLING KIT	-

ATLANTIC VERSION TERMINATOR INTERFACE ADAPTER

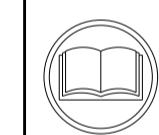


APPLICATOR DATA		
CRIMP	SIZE	TYPE
WIRE	2.79 mm [.110]	F
INSUL	4.32 mm [.170]	F

APPLICATOR INSTRUCTIONS 408-35042

TERMINAL DATA: LEAR TERMINAL TE CRIMP SPECIFICATION			
TERMINAL NAME: TERMINAL, WIRE SNAP ON FEMALE			
WIRE STRIP LENGTH	INSULATION DIAMETER RANGE		
4.75-5.51 mm [.187-.217 IN]	Ø3.05-3.18 mm [.120-.125 IN]		
TERMINAL APPLICATION SPECIFICATION	NONE		
TERMINALS APPLIED			
TE TERMINAL	LEAR TERMINAL	TE TERMINAL	LEAR TERMINAL
2208343-1	361330-YF200	2113910-1	F6DB-14474-DA

WIRE SIZE	CRIMP HEIGHT mm [INCH]	CRIMP HEIGHT REFERENCE SETTING
2 X 18 AWG	1.62 +/- 0.05 [0.064 +/- .002]	5.5
2 X 20 AWG	1.42 +/- 0.05 [0.056 +/- .002]	7.2



- RECOMMENDED SPARE PARTS
- REFER TO SUPPLIED INSTRUCTION SHEET FOR CLEANING, LUBRICATION AND STORAGE OF APPLICATOR.
- APPLY PART NUMBER 2-23419-6 LOCTITE TO THREADS OF ITEM 242.
- CRIMP HEIGHT REFERENCE SETTING WAS THE SETTING USED WHEN THE APPLICATOR WAS QUALIFIED AT THE FACTORY. ADJUSTMENT MAY BE NECESSARY WHEN RUNNING APPLICATOR IN THE FIELD.
- TERMINAL PITCH NOT COMPATIBLE WITH MECHANICAL FEED.
- UNLESS SPECIFIED OTHERWISE TORQUE VALUES SHALL BE USED PER DOCUMENT, 101-35000.

**\*WARNING**  
 ON INSTALLATION, SET WIRE DISC TO CRIMP HEIGHT REFERENCE SETTING FOR LARGEST WIRE SIZE. CRIMP HEIGHT REFERENCE SETTINGS GREATER THAN THE VALUE SHOWN MAY CAUSE DAMAGE TO THE CRIMP TOOLING, REFER TO THE INSTRUCTION SHEET FOR PROPER SETUP AND ADJUSTMENTS.

LOC	DIST	REVISIONS					
		P	LTN	DESCRIPTION	DATE	OWN	APVD
A	66	A		RELEASED	10DEC2015	BH	CT
		B		ECR-19-011125	16JUL2019	FJ	TE

-	1	1	2119641-1	FEED CAM, AIR FEED	248
-	1	1	2119082-5	CAM, SNAIL, INSULATION ADJUSTMENT	244
-	1	1	2079764-1	WASHER, WAVE SPRING, CREST-TO-CREST	243
-	1	1	2119083-1	RETAINER, INSULATION DIAL	242
-	1	1	7-18023-7	SCR, SKT HD CAP M3 X 4.0	241
-	1	1	2844940-2	AIR FEED MODULE	238
-	REF	REF	994970-2	COUNTER, MAGNETIC	164
-	1	1	2844908-1	SCREW, LOCKING	99
-	1	1	2844907-1	POST, LOCKING	98
-	1	1	455888-5	SPACER, CRIMPER	82
-	1	1	1803607-3	DOCUMENTATION PACKAGE	71
-	1	1	2119740-1	TAG, IDENTIFICATION	67
-	2	2	2168078-1	SCREW, DRIVE, RH, RoHS, 2 x .188	66
-	1	1	2168083-2	SCR, SKT HD CAP, RoHS, M4 X 8.0	60
-	1	1	5-18022-5	SCR, HEX HD CAP, M4 X 6.0	59
-	1	1	1338683-8	FEED PAWL	56
-	4	4	2168083-3	SCR, SKT HD CAP, RoHS, M4 X 12.0	54
-	2	2	2168083-8	SCR, SKT HD CAP, RoHS, M4 X 16	53
-	1	1	5018030-1	NUT, HEX, REG, RoHS, M3	52
-	1	1	811242-5	BUMPER, HOLD DOWN	51
-	1	1	690753-2	SPACER, TONKER	50
-	1	1	18023-9	SCR, SKT HD CAP M4 X 6.0	49
-	1	1	1803583-9	APPLICATOR BASIC ASSEMBLY, SF	46
-	1	1	1803515-1	RAM ASSEMBLY, SF ATLANTIC	44
-	1	1	1803602-1	SCR, BHSC, RoHS (M8 X 25)	41
-	1	1	1752356-1	SUPPORT, TERMINAL	34
-	2	2	2079383-5	SCR, BHSC, RoHS (M4 X 20)	33
-	2	2	3-2844962-2	SPACER, CYLINDRICAL, STRIP GUIDE	30
-	1	1	2844992-2	ASSEMBLY, STRIP GUIDE	29
-	1	1	455888-3	SPACER, CRIMPER	28
-	1	1	1320928-2	STRIP GUIDE	24
-	1	1	2168083-2	SCR, SKT HD CAP, RoHS, M4 X 8.0	21
-	2	2	1-18028-2	WASHER, FLAT, REG M4	20
-	1	1	2119533-1	STRIPPER, SIDE FEED	19
-	1	1	2119806-1	INSERT, SHEAR	13
-	1	1	3-22280-3	SPRING, COMPRESSION	12
-	1	1	1-356885-4	STOP, SHEAR	11
-	1	1	2119805-1	SHEAR HOLDER, FRONT	10
-	1	1	1803095-1	FLOATING SHEAR, FRONT	9
-	1	2	1-1633923-5	ANVIL, COMBINATION	8
-	1	1	240641-5	SPACER	7
-	-	-	-	-	6
-	1	1	2119757-4	DEPRESSOR, SHEAR	5
-	1	1	238011-4	BLOCK, CRIMPER SPACER	4
-	1	2	7-1803016-6	CRIMPER, INSULATION F	3
-	1	1	455888-9	SPACER, CRIMPER	2
-	1	2	1633588-3	CRIMPER, WIRE	1
-	77-72	-2	PART NO	DESCRIPTION	ITEM NO

ATLANTIC VERSION  
 Shown on sheets 1 of 4 & 2 of 4  
 (Pacific version shown on sheets 3 of 4 & 4 of 4)

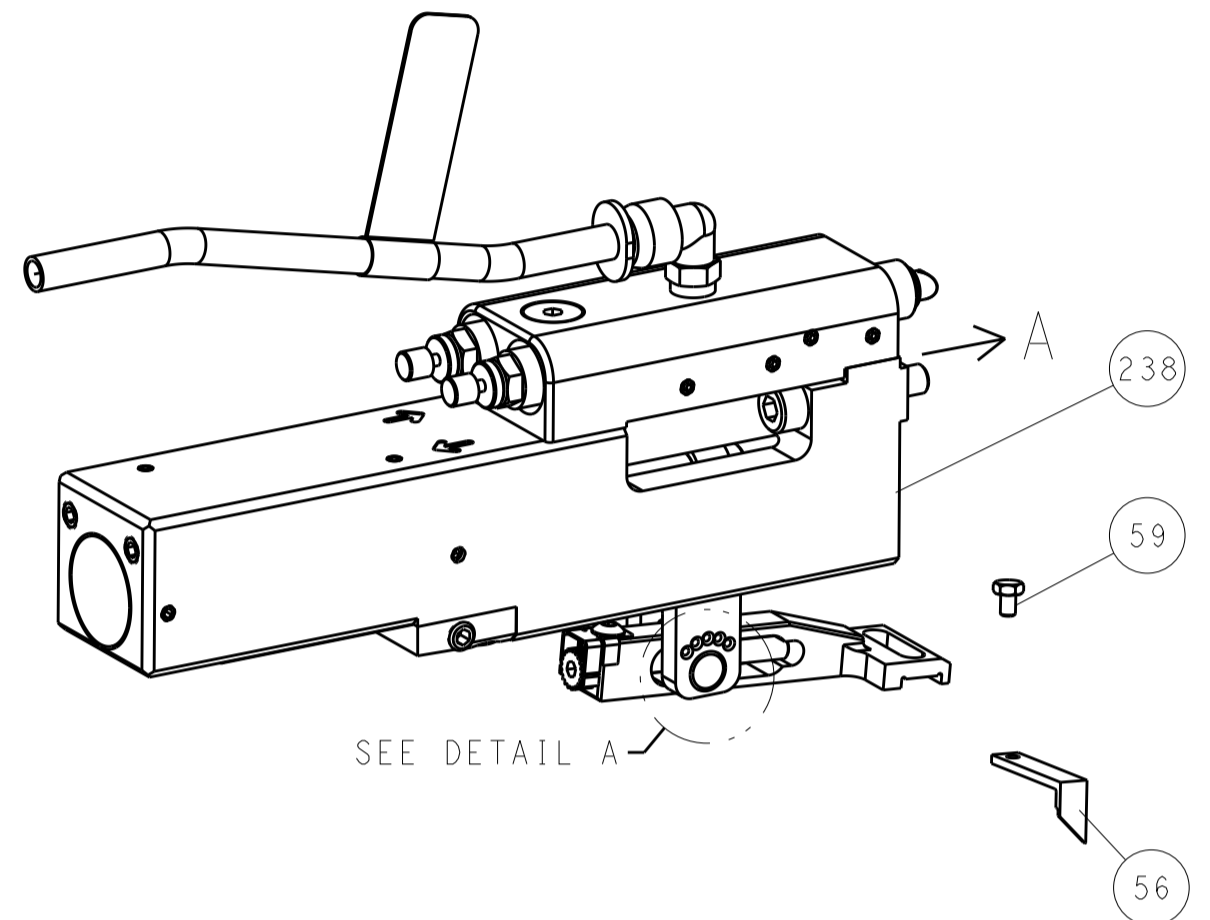
DIMENSIONS:		TOLERANCES UNLESS OTHERWISE SPECIFIED:		MATERIAL:		FINISH:	
mm	0 PLC ±	1 PLC ±	2 PLC ±	3 PLC ±	4 PLC ±	ANGLES ±	FINISH ±

OWN: BOB HIGMAN 22OCT2015	CHK: G. BAILEY 22OCT2015	APVD: G. BAILEY 22OCT2015	NAME: Ocean Side Feed Applicator
SIZE: A1	CAGE CODE: 00779	DRAWING NO: 2836064	RESTRICTED TO: B
Customer Accessible Production Drawing		SCALE: 1:2	SHEET 1 OF 4

LOC	DIST	REVISIONS					
		P	LTN	DESCRIPTION	DATE	OWN	APVD
A	66	-	-	SEE SHEET 1	-	-	-

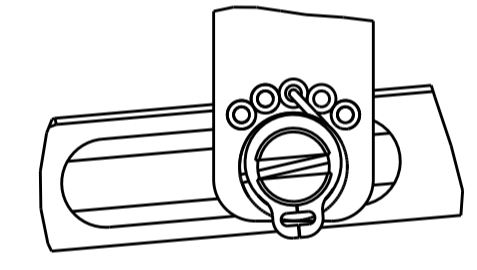
# FEED TYPE

## PNEUMATIC



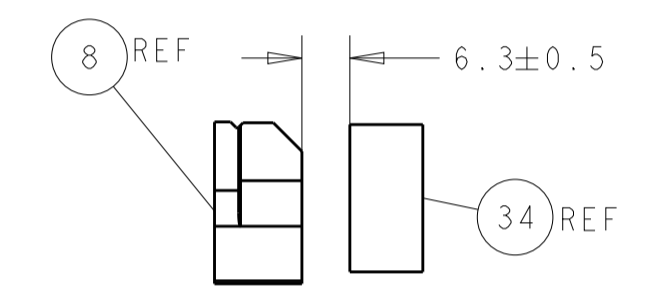
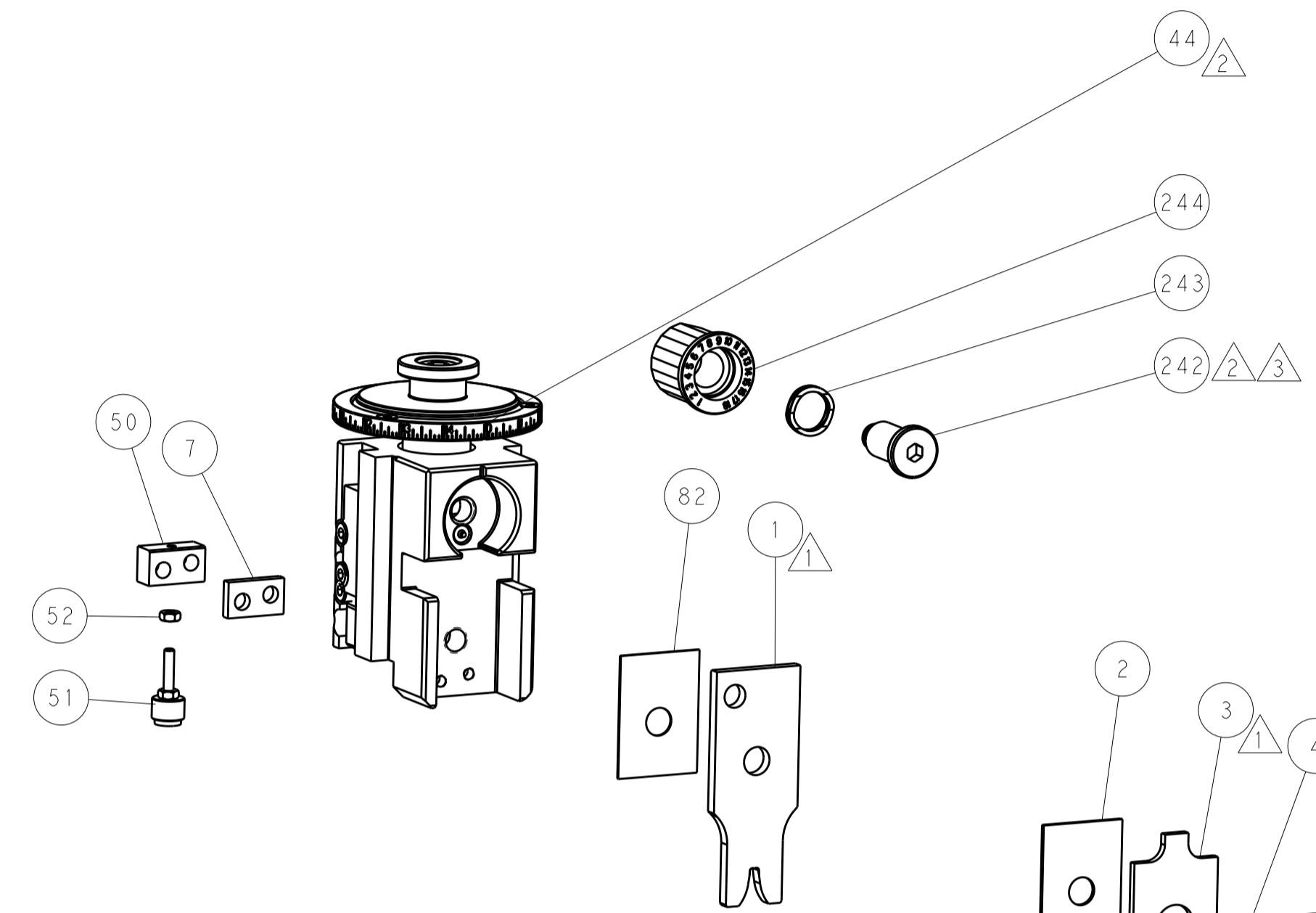
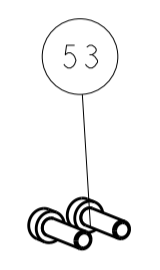
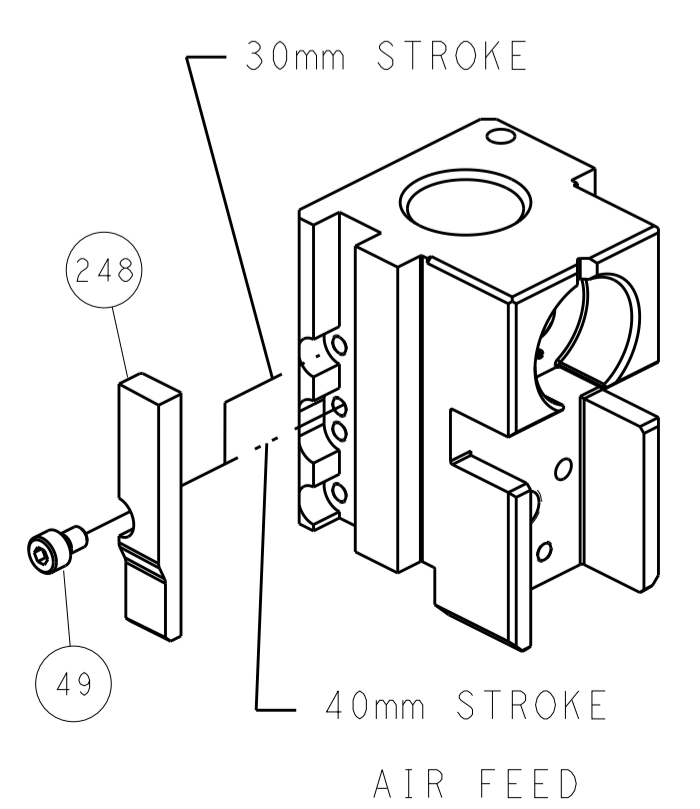
SEE DETAIL A

## FEED SPRING SETTING POSITION (SHOWN FROM REAR SIDE)

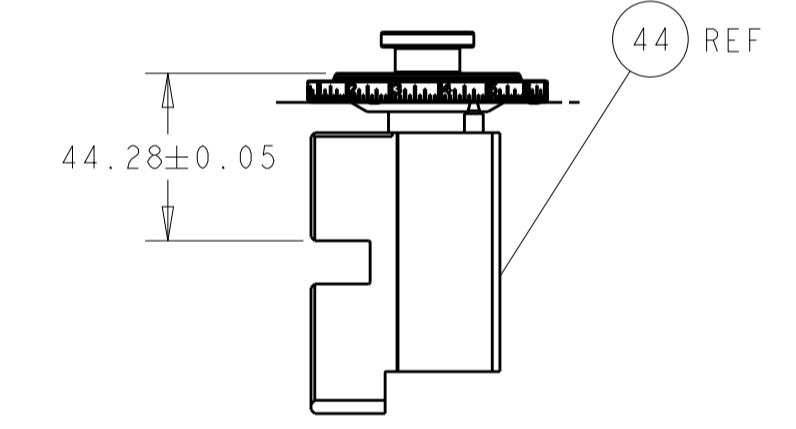


DETAIL A

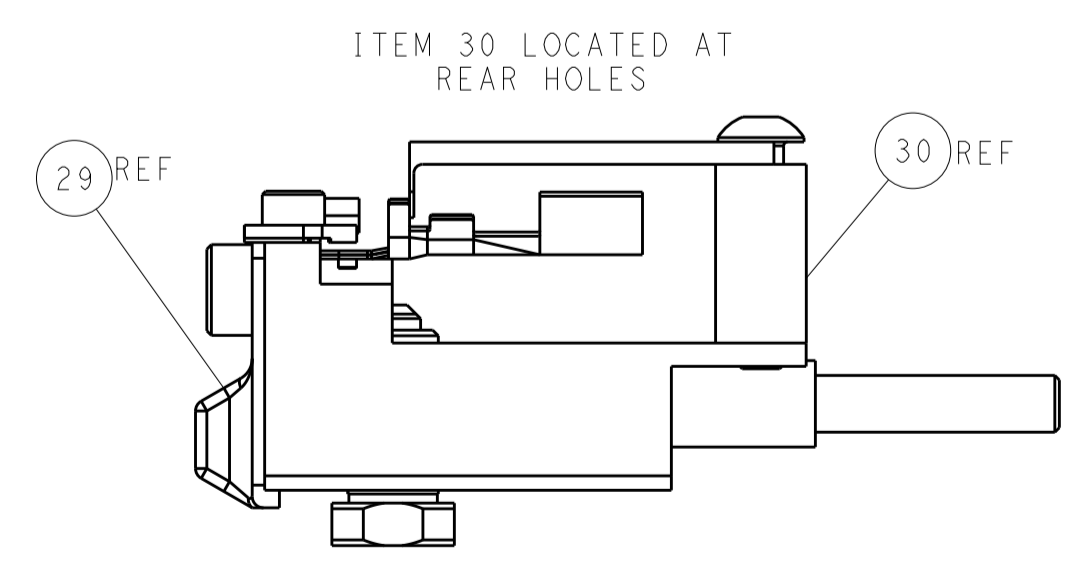
## CAM POSITION



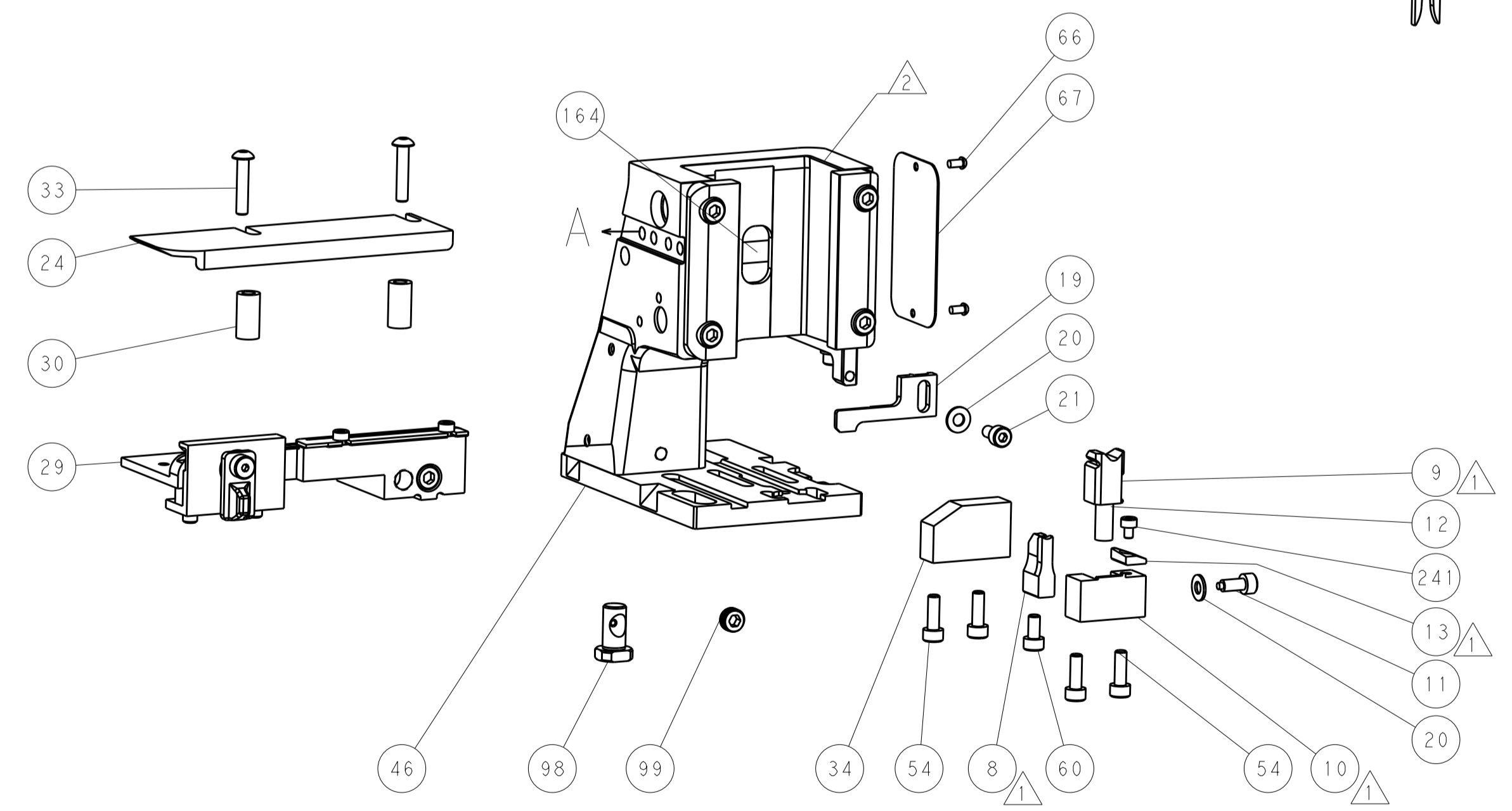
TERMINAL SUPPORT LOCATION



RAM SET-UP



FEED TRACK POSITION  
GUIDE BY INSULATION BARREL



**ATLANTIC VERSION**  
 Shown on sheets 1 of 4 & 2 of 4  
 (Pacific version shown on sheets 3 of 4 & 4 of 4)

DIMENSIONS:		TOLERANCES UNLESS OTHERWISE SPECIFIED:		DWG: BOB_HIGMAN 22OCT2015		TE Connectivity	
mm	0 PLC ±	1 PLC ±	2 PLC ±	3 PLC ±	4 PLC ±	Harrisburg, PA 17105-3608	
MATERIAL:		FINISH:		CHK: G_BAILEY 22OCT2015		NAME: Ocean Side Feed Applicator	
APVD: G_BAILEY 22OCT2015		PRODUCT SPEC:		APVD: G_BAILEY 22OCT2015		SIZE: A1	
APPLICATION SPEC:		WEIGHT:		CAGE CODE: 00779		DRAWING NO: 2836064	
RESTRICTED TO:		SCALE: 1:2		SHEET: 2 OF 4		REV: B	

PART NUMBER	REVISION	DESCRIPTION	FEED TYPE
2-2836064-2	B	FINE CRIMP HEIGHT ADJUST	PNEUMATIC
7-2836064-7	A	CRIMP TOOLING KIT	-

PACIFIC VERSION TERMINATOR  
 INTERFACE ADAPTER



APPLICATOR DATA		
CRIMP	SIZE	TYPE
WIRE	2.79 mm [.110]	F
INSUL	4.32 mm [.170]	F

APPLICATOR INSTRUCTIONS  
 408-35042

TERMINAL DATA: LEAR TERMINAL		TE CRIMP SPECIFICATION	
TERMINAL NAME: TERMINAL, WIRE SNAP ON FEMALE			
WIRE STRIP LENGTH		INSULATION DIAMETER RANGE	
4.75-5.51 mm [.187-.217 IN]		∅3.05-3.18 mm [.120-.125 IN]	
TERMINAL APPLICATION SPECIFICATION	NONE		
TERMINALS APPLIED <sup>5</sup>			
TE TERMINAL	LEAR TERMINAL	TE TERMINAL	LEAR TERMINAL
2208343-1	361330-YF200	2113910-1	F6DB-14474-DA

WIRE SIZE	CRIMP HEIGHT mm [INCH]	CRIMP HEIGHT REFERENCE SETTING
2 X 18 AWG	1.62+/-0.05 [1.064+/-0.002]	5.5
2 X 20 AWG	1.42+/-0.05 [1.056+/-0.002]	7.2



- <sup>1</sup> RECOMMENDED SPARE PARTS
  - <sup>2</sup> REFER TO SUPPLIED INSTRUCTION SHEET FOR CLEANING, LUBRICATION AND STORAGE OF APPLICATOR.
  - <sup>3</sup> APPLY PART NUMBER 2-23419-6 LOCTITE TO THREADS OF ITEM 242.
  - <sup>4</sup> CRIMP HEIGHT REFERENCE SETTING WAS THE SETTING USED WHEN THE APPLICATOR WAS QUALIFIED AT THE FACTORY. ADJUSTMENT MAY BE NECESSARY WHEN RUNNING APPLICATOR IN THE FIELD.
  - <sup>5</sup> TERMINAL PITCH NOT COMPATIBLE WITH MECHANICAL FEED.
6. UNLESS SPECIFIED OTHERWISE TORQUE VALUES SHALL BE USED PER DOCUMENT, 101-35000.

**\*WARNING**  
 ON INSTALLATION, SET WIRE DISC TO CRIMP HEIGHT REFERENCE SETTING FOR LARGEST WIRE SIZE. CRIMP HEIGHT REFERENCE SETTINGS GREATER THAN THE VALUE SHOWN MAY CAUSE DAMAGE TO THE CRIMP TOOLING, REFER TO THE INSTRUCTION SHEET FOR PROPER SETUP AND ADJUSTMENTS.

LOC	DIST	REV	DATE	BY	APPD
A	66				

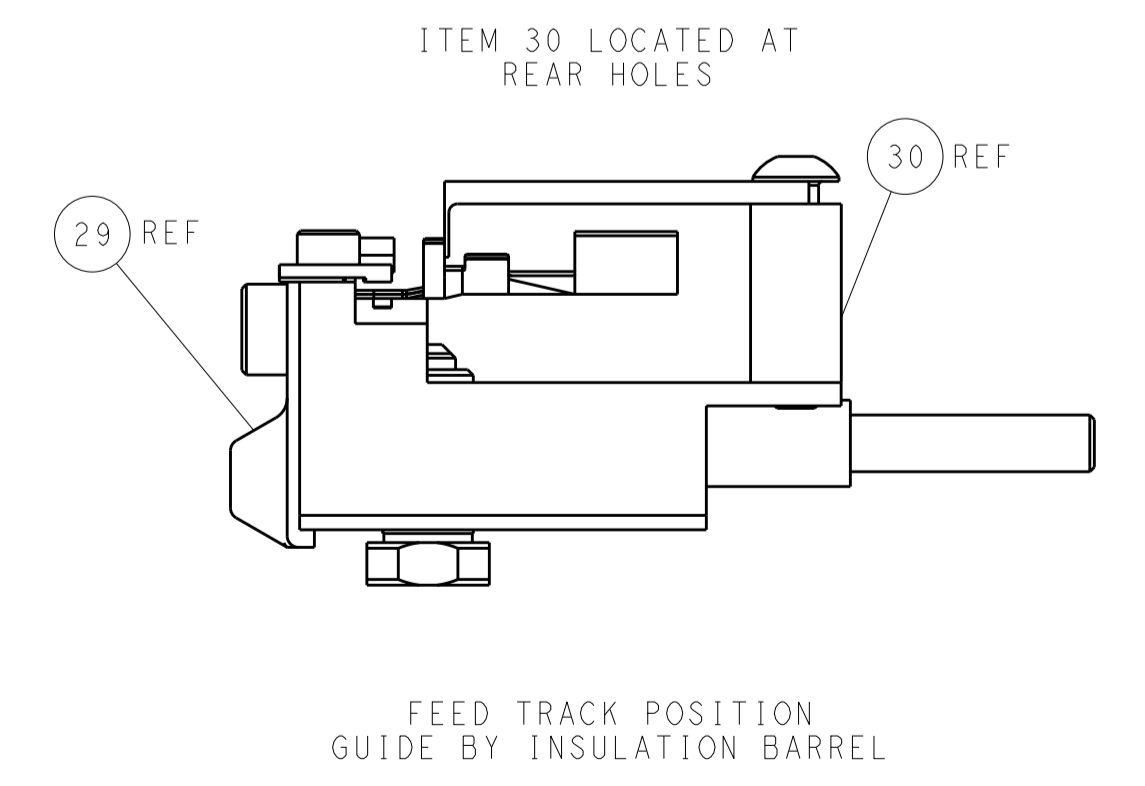
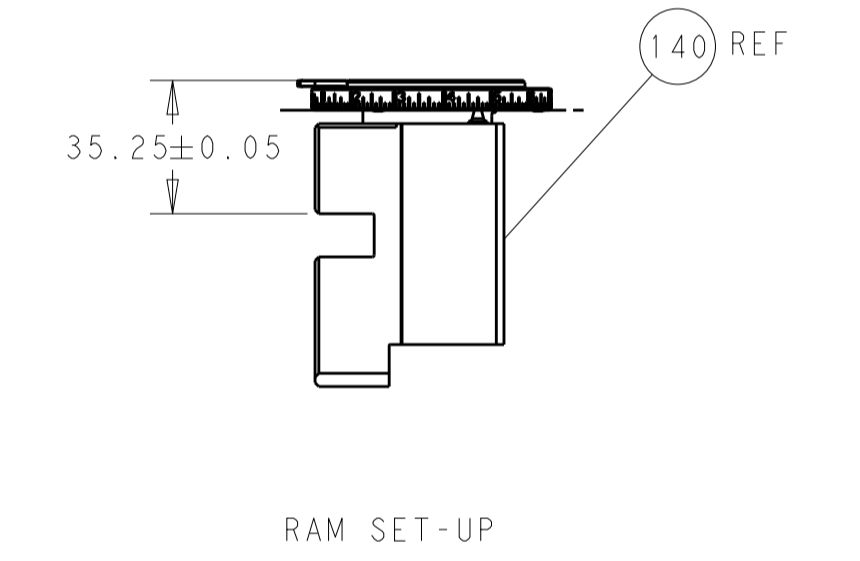
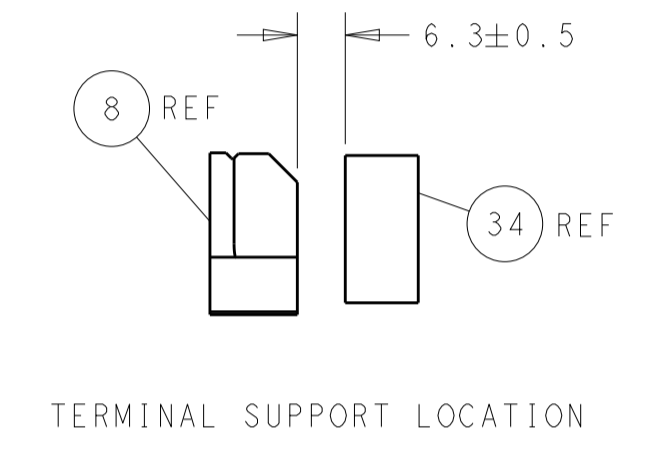
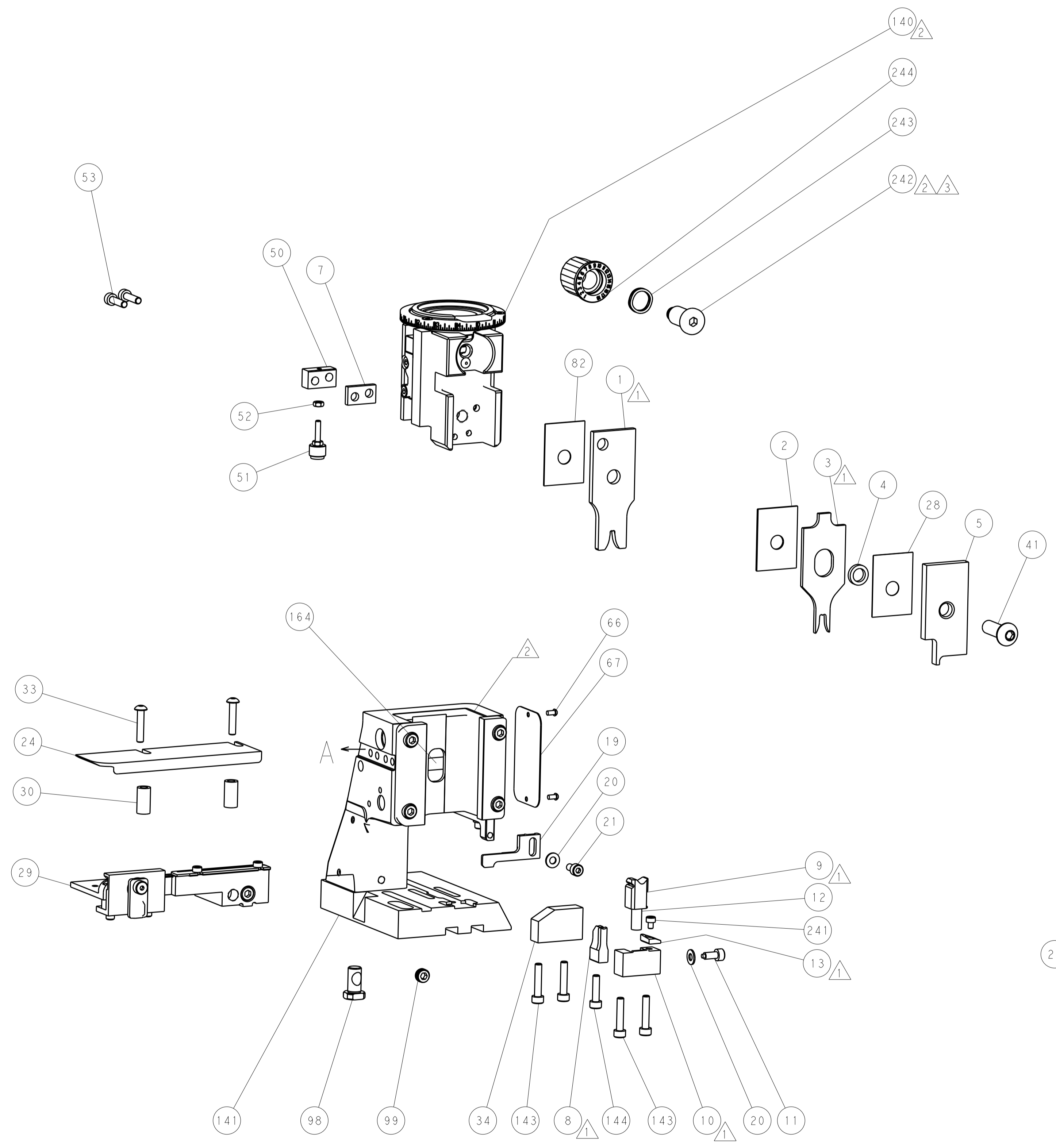
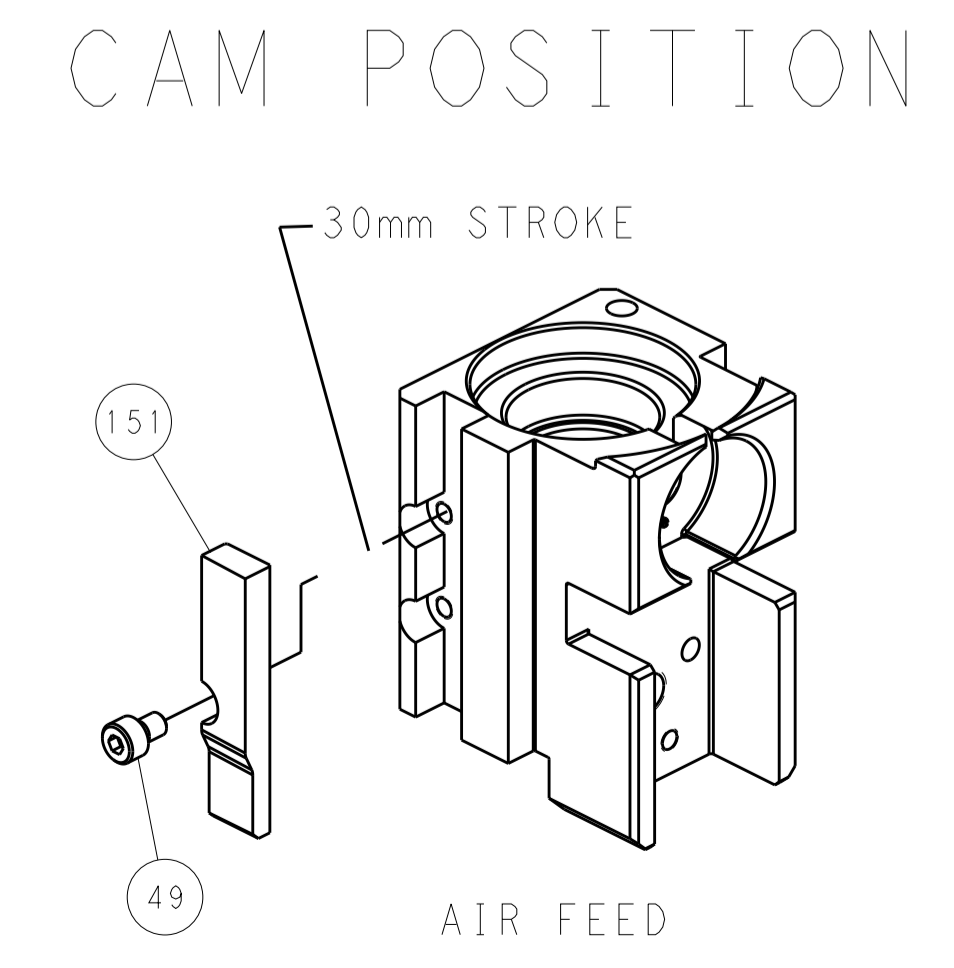
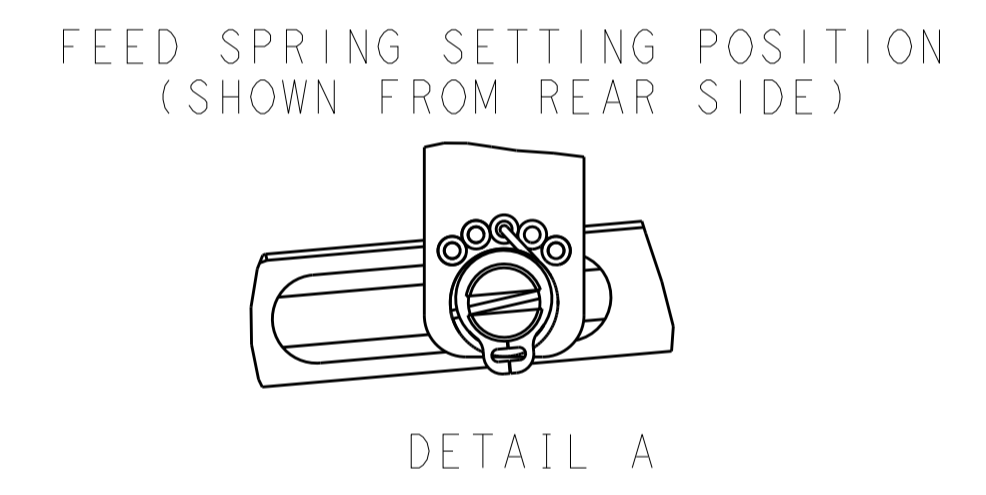
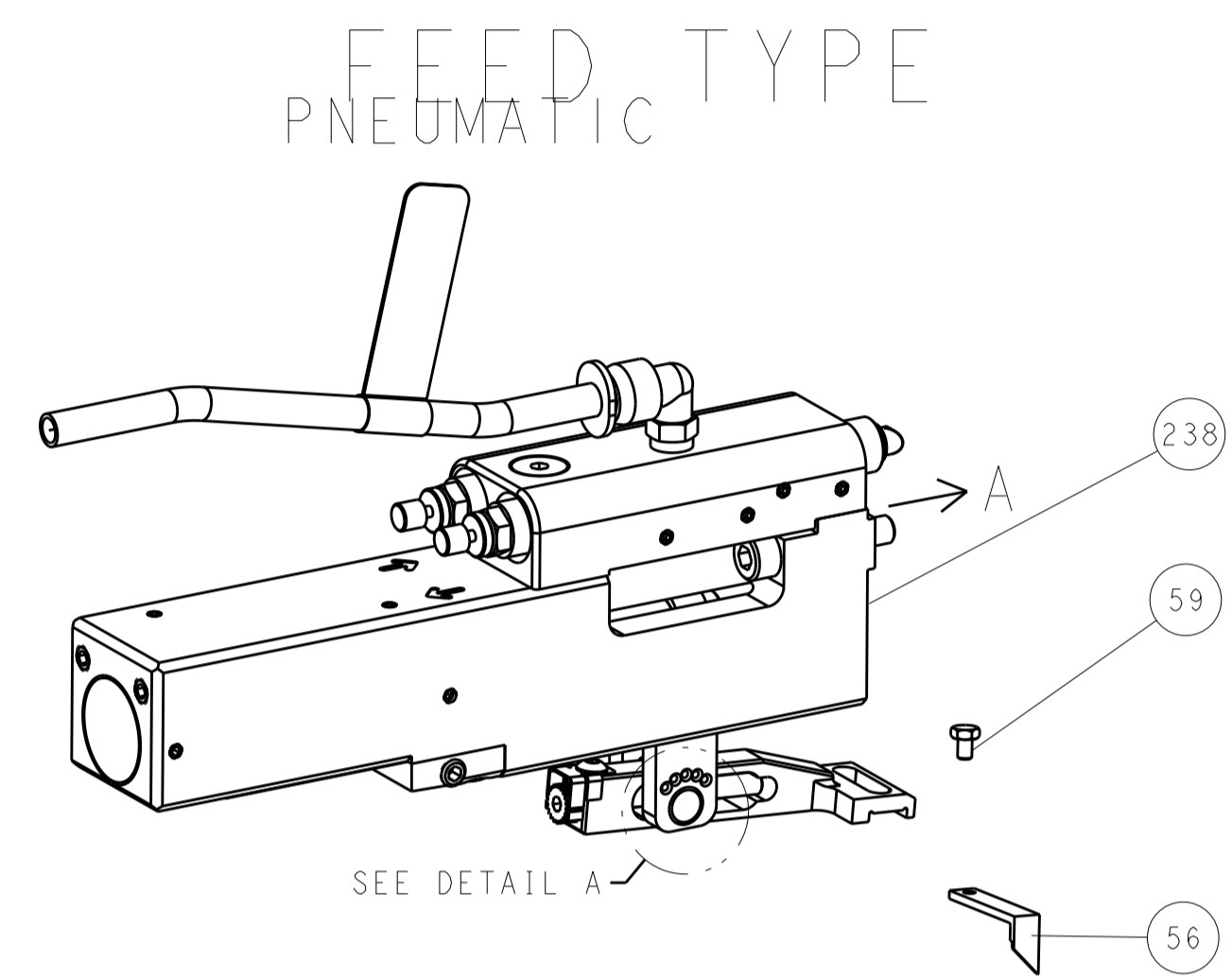
REV	DATE	BY	APPD	DESCRIPTION	ITEM NO
-	1	2119082-5		CAM, SNAIL, INSULATION ADJUSTMENT	244
-	1	2079764-1		WASHER, WAVE SPRING, CREST-TO-CREST	243
-	1	2119083-1		RETAINER, INSULATION DIAL	242
-	1	7-18023-7		SCR, SKT HD CAP M3 X 4.0	241
-	1	2844940-2		AIR FEED MODULE	238
-	REF	994970-2		COUNTER, MAGNETIC	164
-	1	2119641-2		FEED CAM, AIR FEED	151
-	1	2168083-8		SCR, SKT HD CAP, RoHS, M4 X 16	144
-	4	2168083-9		SCR, SKT HD CAP, RoHS, M4 X 20	143
-	-	2119653-2		FEED CAM, POST FEED	142
-	1	1-1803583-0		APPLICATOR BASIC ASSEMBLY, SF	141
-	1	1803516-1		RAM ASSEMBLY, SF PACIFIC	140
-	1	2844908-1		SCREW, LOCKING	99
-	1	2844907-1		POST, LOCKING	98
-	1	455888-5		SPACER, CRIMPER	82
-	1	1803607-3		DOCUMENTATION PACKAGE	71
-	1	2119740-1		TAG, IDENTIFICATION	67
-	2	2168078-1		SCREW, DRIVE, RH, RoHS, 2 x .188	66
-	1	5-18022-5		SCR, HEX HD CAP, M4 X 6.0	59
-	1	1338683-8		FEED PAWL	56
-	2	2168083-8		SCR, SKT HD CAP, RoHS, M4 X 16	53
-	1	5018030-1		NUT, HEX, REG, RoHS, M3	52
-	1	811242-5		BUMPER, HOLD DOWN	51
-	1	690753-2		SPACER, TONKER	50
-	1	18023-9		SCR, SKT HD CAP M4 X 6.0	49
-	1	1803602-1		SCR, BHSC, RoHS (M8 X 25)	41
-	1	1752356-1		SUPPORT, TERMINAL	34
-	2	2079383-5		SCR, BHSC, RoHS (M4 X 20)	33
-	2	3-2844962-2		SPACER, CYLINDRICAL, STRIP GUIDE	30
-	1	2844992-2		ASSEMBLY, STRIP GUIDE	29
-	1	455888-3		SPACER, CRIMPER	28
-	1	1320928-2		STRIP GUIDE	24
-	1	2168083-2		SCR, SKT HD CAP, RoHS, M4 X 8.0	21
-	2	1-18028-2		WASHER, FLAT, REG M4	20
-	1	2119533-1		STRIPPER, SIDE FEED	19
-	1	2119806-1		INSERT, SHEAR	13
-	1	3-22280-3		SPRING, COMPRESSION	12
-	1	1-356885-4		STOP, SHEAR	11
-	1	2119805-1		SHEAR HOLDER, FRONT	10
-	1	1803095-1		FLOATING SHEAR, FRONT	9
1	1	2-1633923-5		ANVIL, COMBINATION	8
-	1	240641-5		SPACER	7
-	-	-		-	6
-	1	2119757-4		DEPRESSOR, SHEAR	5
-	1	238011-4		BLOCK, CRIMPER SPACER	4
1	1	7-1803016-6		CRIMPER, INSULATION F	3
-	1	455888-9		SPACER, CRIMPER	2
1	1	1633588-3		CRIMPER, WIRE	1
-77	-22	PART NO		DESCRIPTION	ITEM NO

PACIFIC VERSION  
 Shown on sheets 3 of 4 & 4 of 4  
 (Atlantic version shown on sheets 1 of 4 & 2 of 4)

DIMENSIONS: mm 		TOLERANCES UNLESS OTHERWISE SPECIFIED: 0 PLC ± 1 PLC ± 2 PLC ± 3 PLC ± 4 PLC ± ANGLES ±		DWG: BOB HIGMAN 22OCT2015 CHK: G. BAILEY 22OCT2015 APPD: G. BAILEY 22OCT2015		NAME: Ocean Side Feed Applicator SIZE: A1 CAGE CODE: 00779 DRAWING NO: 2836064 SCALE: 1:2 SHEET: 3 OF 4 REV: B	
MATERIAL: - FINISH: -				WEIGHT: -		RESTRICTED TO: -	

Customer Accessible Production Drawing

LOC		DIST		REVISIONS			
A	66	P	LTM	DESCRIPTION	DATE	DWN	APVD
		-	-	SEE SHEET 1	-	-	-



PACIFIC VERSION  
 Shown on sheets 3 of 4 & 4 of 4  
 (Atlantic version shown on sheets 1 of 4 & 2 of 4)

DIMENSIONS:		TOLERANCES UNLESS OTHERWISE SPECIFIED:		DWN BOB HIGMAN 22OCT2015		TE Connectivity	
mm	0 PLC ±	1 PLC ±	2 PLC ±	3 PLC ±	4 PLC ±	Harrisburg, PA 17105-3608	
MATERIAL:		FINISH:		APVD G. BAILEY 22OCT2015		NAME Ocean Side Feed Applicator	
				PRODUCT SPEC		SIZE CAGE CODE DRAWING NO	
				APPLICATION SPEC		A1 00779 C=2836064	
				WEIGHT		RESTRICTED TO	
				Customer Accessible Production Drawing		SCALE 1:2 SHEET 4 OF 4 REV B	