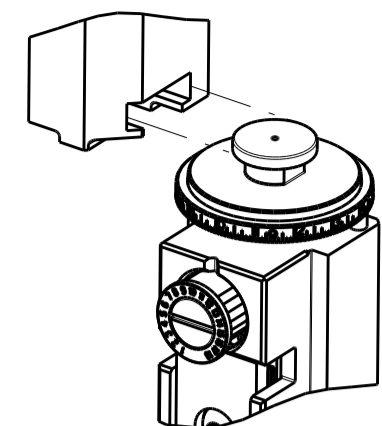


PART NUMBER	REVISION	DESCRIPTION	FEED TYPE
2266288-2	D	FINE CRIMP HEIGHT ADJUST	PNEUMATIC
7-2266288-2	D	PNEUMATIC AND CRIMP TOOLING KIT	PNEUMATIC
7-2266288-7	B	CRIMP TOOLING KIT	-

ATLANTIC VERSION TERMINATOR INTERFACE ADAPTER

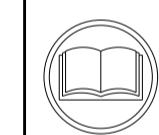


APPLICATOR DATA		
CRIMP	SIZE	TYPE
WIRE	0.72 mm [.028]	F
INSUL	0.72 mm [.028]	F

APPLICATOR INSTRUCTIONS
408-35042

TERMINAL DATA: HIROSE TERMINAL HIROSE CRIMP SPECIFICATION	
TERMINAL NAME: FX 15 SERIES	
WIRE STRIP LENGTH	TERMINAL INSULATION DIAMETER RANGE
1.10-1.80 mm [.043-.071 IN]	Ø0.56-0.72 mm [.022-.028 IN]
TERMINAL APPLICATION SPECIFICATION	TAD-P-0506 Rev -
TERMINALS APPLIED	
TE TERMINAL	HIROSE TERMINAL
2113459-1	FX15-2830PCFB

WIRE SIZE	CRIMP HEIGHT mm [INCH]	CRIMP HEIGHT REFERENCE SETTING
28 AWG	0.54 +/- 0.02 [.021 +/- .001]	5.2
30 AWG	0.50 +/- 0.02 [.020 +/- .001]	5.7



- RECOMMENDED SPARE PARTS
- REFER TO SUPPLIED INSTRUCTION SHEET FOR CLEANING, LUBRICATION AND STORAGE OF APPLICATOR.
- APPLY PART NUMBER 2-23419-6 LOCTITE TO THREADS OF ITEM 242. APPLY PART NUMBER 1-23419-5 LOCTITE TO THREADS OF ITEM 180.
- CRIMP HEIGHT REFERENCE SETTING WAS THE SETTING USED WHEN THE APPLICATOR WAS QUALIFIED AT THE FACTORY. ADJUSTMENT MAY BE NECESSARY WHEN RUNNING APPLICATOR IN THE FIELD.
- UNLESS SPECIFIED OTHERWISE TORQUE VALUES SHALL BE USED PER DOCUMENT, 101-35000.
- TERMINAL PITCH NOT COMPATIBLE WITH MECHANICAL FEED.
- ITEMS 282 AND 283 ARE INTENDED TO BE USED ON LEADMAKER APPLICATION.
- TERMINAL LUBRICANT IS RECOMMENDED.

***WARNING**
ON INSTALLATION, SET WIRE DISC TO CRIMP HEIGHT REFERENCE SETTING FOR LARGEST WIRE SIZE. CRIMP HEIGHT REFERENCE SETTINGS GREATER THAN THE VALUE SHOWN MAY CAUSE DAMAGE TO THE CRIMP TOOLING, REFER TO THE INSTRUCTION SHEET FOR PROPER SETUP AND ADJUSTMENTS.

ATLANTIC VERSION
Shown on sheets 1 of 4 & 2 of 4
(Pacific version shown on sheets 3 of 4 & 4 of 4)

LOC	DIST	REVISIONS					
A	66	P	LTN	DESCRIPTION	DATE	OWN	APVD
		A		RELEASE	31MAY2018	AW	TE
		B		ECR-19-001385	28JAN2019	FJ	YY
		C		ECR-19-019757	19DEC2019	FZ	TE
		D		ECR-20-000766	16JAN2020	MZ	RK

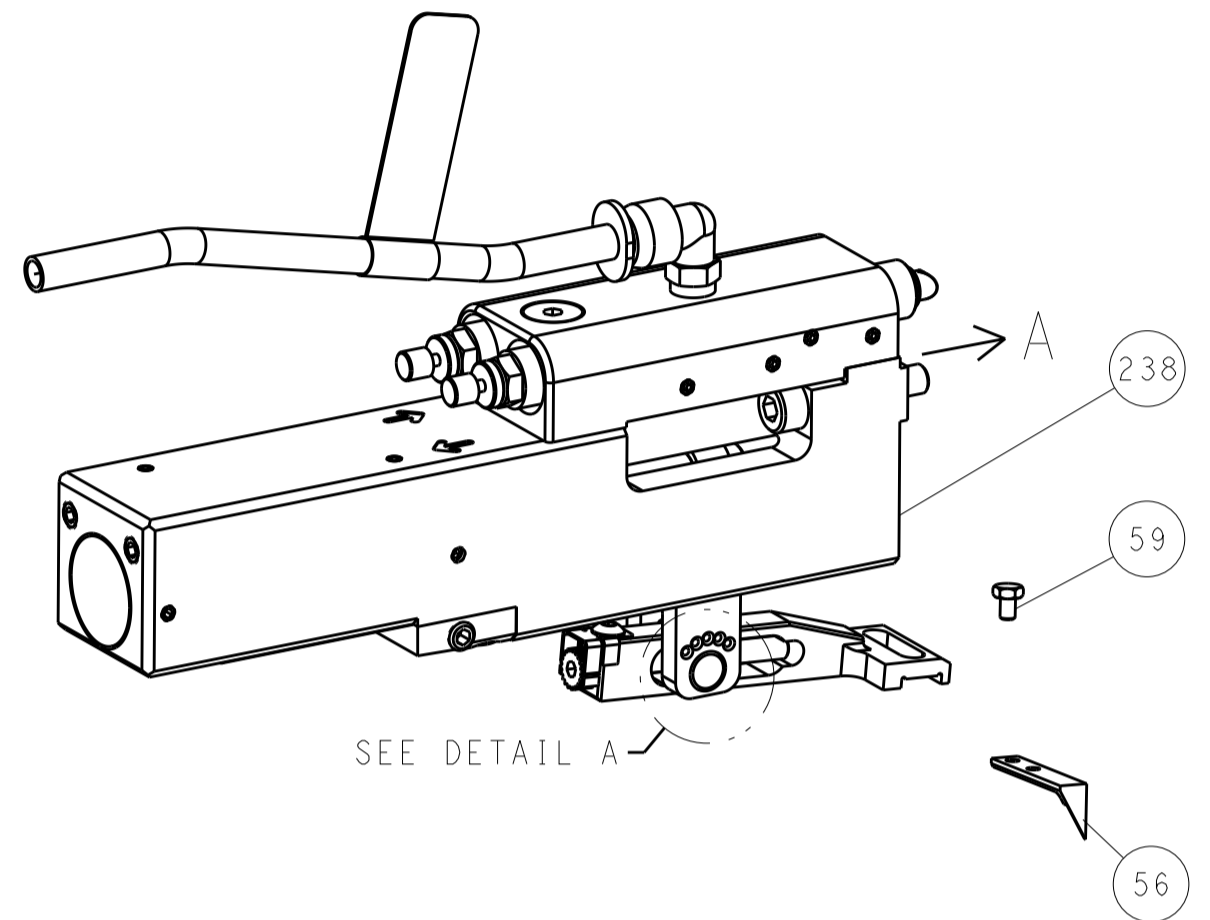
-	1	1	2079383-1	SCR, BHSC, RoHS (M3 X 8)	284
-	1	1	1633289-4	STABILIZER	283
-	1	1	1803461-1	HOLDER, STABILIZER	282
-	1	1	1-18028-3	WASHER, FLAT, REG M5	281
-	1	1	1803196-1	STUD, ADJUSTMENT SCREW	280
-	1	1	1-2119791-8	DEPRESSOR, WIRE	265
-	1	1	2330046-1	RESIN COLLAR, FLANGED	261
-	1	1	2119641-1	FEED CAM, AIR FEED	248
-	1	1	2119082-5	CAM, SNAIL, INSULATION ADJUSTMENT	244
-	1	1	2079764-1	WASHER, WAVE SPRING, CREST-TO-CREST	243
-	1	1	2119083-1	RETAINER, INSULATION DIAL	242
-	1	1	7-18023-7	SCR, SKT HD CAP M3 X 4.0	241
-	1	1	2844940-1	AIR FEED MODULE	238
-	1	1	1752354-9	STANDOFF, HOLD-DOWN	180
-	1	1	993111-1	PIN, SLOTTED SPRING 3.0 X 20.0	177
-	1	1	8-22280-7	SPRING, COMPRESSION	176
-	1	1	1752353-2	GUIDE PIN, HOLDDOWN	175
-	1	1	1901680-2	GUIDE PIN, HOLDDOWN	174
-	REF	REF	994970-2	COUNTER, MAGNETIC	164
-	1	1	1-22281-6	SPRING, COMPRESSION	121
-	1	1	2119955-1	ASSY, LUBRICATOR, SIDE FEED	113
-	1	1	2844908-1	SCREW, LOCKING	99
-	1	1	2844907-1	POST, LOCKING	98
-	1	1	1-690438-0	FRONT STRIP GUIDE	96
-	2	2	2168083-1	SCR, SKT HD CAP, RoHS, M3 X 8.0	95
-	1	1	1-994962-8	SCR, SKT HD CAP M3 X 45.0	93
-	1	1	1803607-3	DOCUMENTATION PACKAGE	71
-	1	1	2119740-1	TAG, IDENTIFICATION	67
-	2	2	2168078-1	SCREW, DRIVE, RH, RoHS, 2 x .188	66
-	2	2	2-18032-5	SCR, SET, FLT PNT, M5 X 20.0	61
-	1	1	2161425-1	SCREW, SHOULDER	60
-	1	1	5-18022-5	SCR, HEX HD CAP, M4 X 6.0	59
-	1	1	1338685-3	PAWL, FEED	56
-	4	4	2168083-3	SCR, SKT HD CAP, RoHS, M4 X 12.0	54
-	1	1	1-5018030-0	NUT, HEX, REG, RoHS, M3.5	52
-	1	1	1-1901681-3	HOLDDOWN, TERMINAL	51
-	1	1	18023-9	SCR, SKT HD CAP M4 X 6.0	49
-	1	1	2-1803583-5	APPLICATOR BASIC ASSEMBLY, SF	46
-	1	1	1803515-3	RAM ASSEMBLY, SF ATLANTIC	44
-	1	1	1803602-1	SCR, BHSC, RoHS (M8 X 25)	41
-	1	1	8-1752356-7	SUPPORT, TERMINAL	34
-	2	2	2079383-5	SCR, BHSC, RoHS (M4 X 20)	33
-	2	2	2-2844962-1	SPACER, CYLINDRICAL, STRIP GUIDE	30
-	1	1	2-2844938-0	PLATE, STRIP GUIDE	29
-	1	1	455888-5	SPACER, CRIMPER	28
-	2	2	22283-1	SPRING, COMPRESSION	27
-	1	1	356835-1	LEVER, DRAG RELEASE	26
-	1	1	240792-5	DRAG, TERMINAL	25
-	1	1	1320928-2	STRIP GUIDE	24
-	1	1	980371-4	SCR, SKT HD SHLDR 5.0 DIA X 6.0	23
-	1	1	2168083-2	SCR, SKT HD CAP, RoHS, M4 X 8.0	21
-	2	2	1-18028-2	WASHER, FLAT, REG M4	20
-	1	1	1803213-1	STRIPPER	19
-	1	1	2119806-1	INSERT, SHEAR	13
-	1	1	3-22280-3	SPRING, COMPRESSION	12
-	1	1	1-18032-1	SCR, SET, FLT PNT, M6 X 25.0	11
-	1	1	2119805-1	SHEAR HOLDER, FRONT	10
-	1	1	1803095-6	FLOATING SHEAR, FRONT	9
-	1	2	1-1803395-6	ANVIL, COMBINATION	8
-	-	-	-	-	7
-	-	-	-	-	6
-	1	1	1-2119757-8	DEPRESSOR, SHEAR	5
-	1	1	238011-6	BLOCK, CRIMPER SPACER	4
-	1	2	1-1803493-1	CRIMPER, INSULATION F PREMIUM	3
-	-	-	-	-	2
-	1	2	1803710-1	CRIMPER, WIRE PREMIUM	1
-	77	72	-2	PART NO	ITEM NO

DIMENSIONS:		TOLERANCES UNLESS OTHERWISE SPECIFIED:		MATERIAL:		FINISH:	
mm	0 PLC ±	1 PLC ±	2 PLC ±	3 PLC ±	4 PLC ±	ANGLES ±	FINISH ±
APPLICATOR DATA		APPLICATOR DATA		APPLICATOR DATA		APPLICATOR DATA	
OWN: C. TOPPER 16MAR2018		CHK: G. BAILEY 16MAR2018		APVD: DEGRANGE 16MAR2018		NAME: Ocean Side Feed Applicator	
SIZE: A1		CAGE CODE: 00779		DRAWING NO: 2266288		RESTRICTED TO: -	
Customer Accessible Production Drawing		SCALE: 1:2		SHEET: 1 of 4		REV: D	

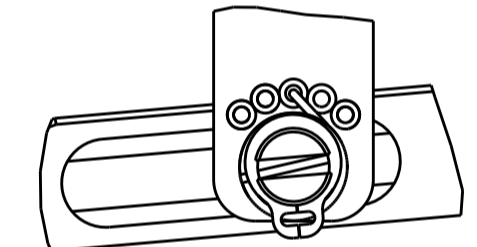
LOC	DIST	REV	DATE	BY	APPV
A	66				
REVISIONS			DESCRIPTION	DATE	BY
			SEE SHEET 1		

FEED TYPE

PNEUMATIC

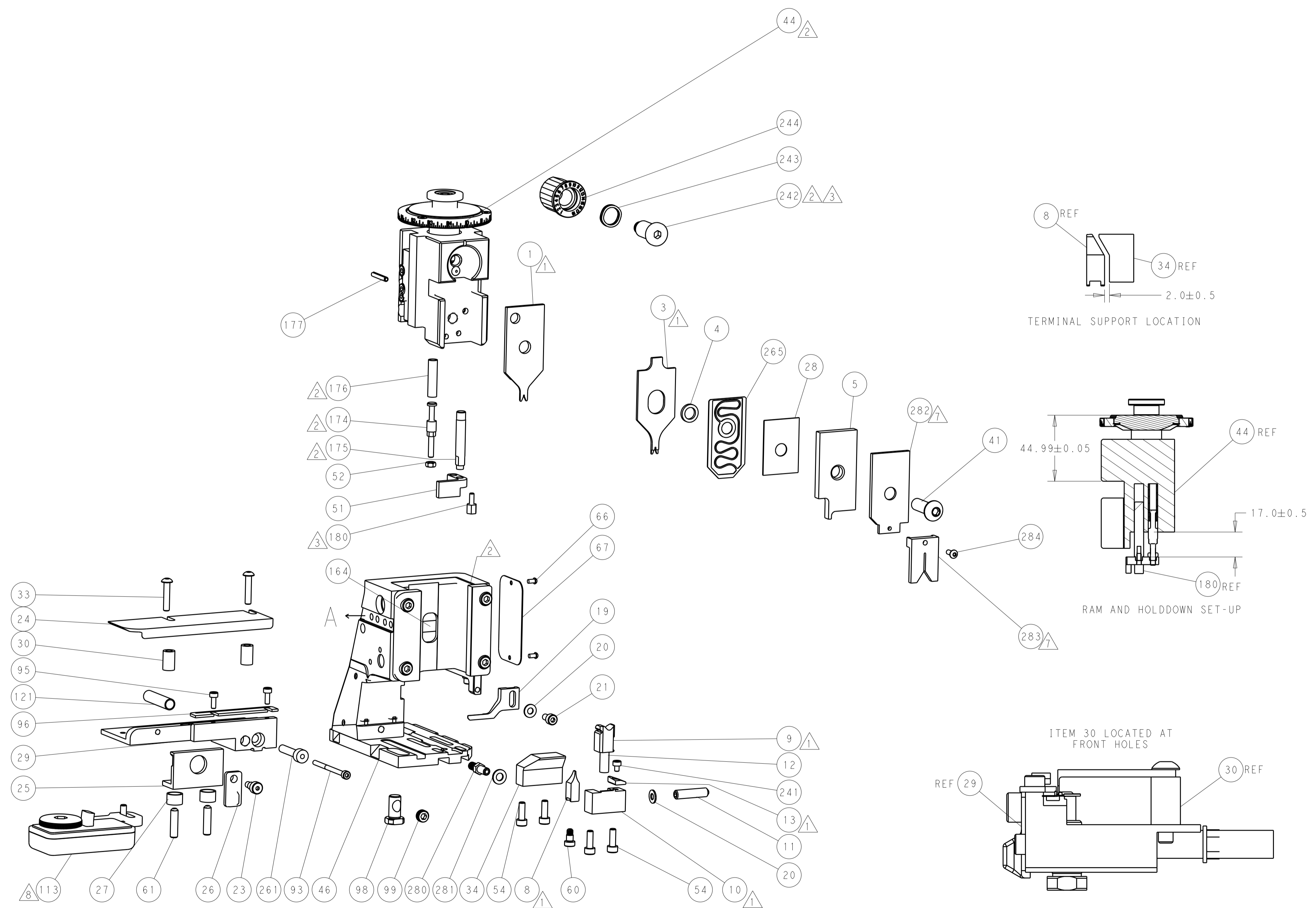
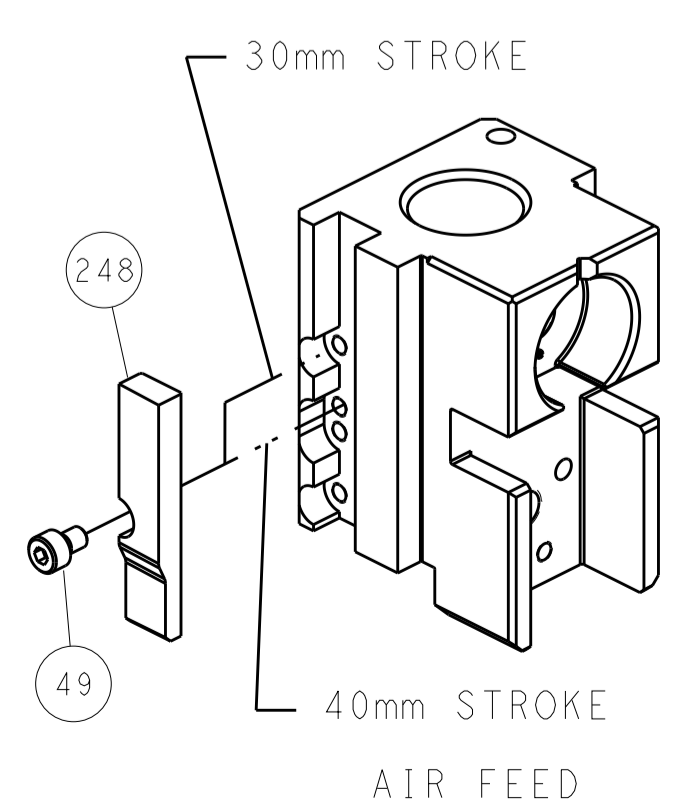


FEED SPRING SETTING POSITION (SHOWN FROM REAR SIDE)



DETAIL A

CAM POSITION



TERMINAL SUPPORT LOCATION

RAM AND HOLDDOWN SET-UP

ITEM 30 LOCATED AT FRONT HOLES

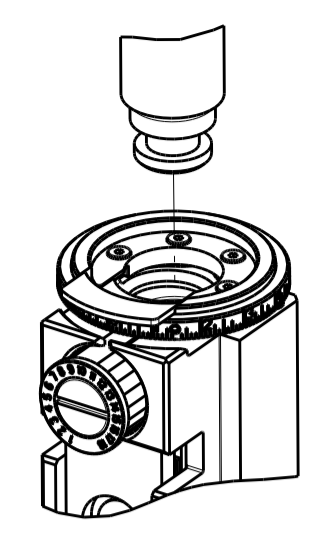
FEED TRACK POSITION GUIDE BY INSULATION BARREL

ATLANTIC VERSION
 Shown on sheets 1 of 4 & 2 of 4
 (Pacific version shown on sheets 3 of 4 & 4 of 4)

DIMENSIONS:		TOLERANCES UNLESS OTHERWISE SPECIFIED:		DWN C. TOPPER 16MAR2018		TE Connectivity	
mm	0 PLC ±	1 PLC ±	2 PLC ±	3 PLC ±	4 PLC ±	APVD G. BAILEY 16MAR2018	Harrisburg, PA 17105-3608
	ANGLES	FINISH		NAME		Ocean Side Feed Applicator	
MATERIAL	FINISH	WEIGHT		SIZE CAGE CODE DRAWING NO		RESTRICTED TO	
				A1 00779 C=2266288			
Customer Accessible Production Drawing				SCALE 1:2		SHEET 2 OF 4 REV D	

PART NUMBER	REVISION	DESCRIPTION	FEED TYPE
2-2266288-2	D	FINE CRIMP HEIGHT ADJUST	PNEUMATIC
7-2266288-7	B	CRIMP TOOLING KIT	-

PACIFIC VERSION TERMINATOR
 INTERFACE ADAPTER

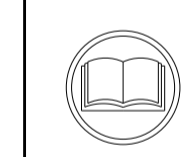


APPLICATOR DATA		
CRIMP	SIZE	TYPE
WIRE	0.72 mm [.028]	F
INSUL	0.72 mm [.028]	F

APPLICATOR INSTRUCTIONS
 408-35042

TERMINAL DATA: HIROSE TERMINAL HIROSE CRIMP SPECIFICATION			
TERMINAL NAME: FX 15 SERIES			
WIRE STRIP LENGTH	TERMINAL INSULATION DIAMETER RANGE		
1.10-1.80 mm [.043-.071 IN]	Ø0.56-0.72 mm [.022-.028 IN]		
TERMINAL APPLICATION SPECIFICATION			
TAD-P-0506 Rev -	-		
TERMINALS APPLIED			
TE TERMINAL	HIROSE TERMINAL	TE TERMINAL	HIROSE TERMINAL
2113459-1	FX15-2830PCFB		

WIRE SIZE	CRIMP HEIGHT mm [INCH]	CRIMP HEIGHT REFERENCE SETTING
28 AWG	0.54 +/- 0.02 [.021 +/- .001]	5.2
30 AWG	0.50 +/- 0.02 [.020 +/- .001]	5.7



- RECOMMENDED SPARE PARTS
- REFER TO SUPPLIED INSTRUCTION SHEET FOR CLEANING, LUBRICATION AND STORAGE OF APPLICATOR.
- APPLY PART NUMBER 2-23419-6 LOCTITE TO THREADS OF ITEM 242. APPLY PART NUMBER 1-23419-5 LOCTITE TO THREADS OF ITEM 180.
- CRIMP HEIGHT REFERENCE SETTING WAS THE SETTING USED WHEN THE APPLICATOR WAS QUALIFIED AT THE FACTORY. ADJUSTMENT MAY BE NECESSARY WHEN RUNNING APPLICATOR IN THE FIELD.
- UNLESS SPECIFIED OTHERWISE TORQUE VALUES SHALL BE USED PER DOCUMENT, 101-35000.
- TERMINAL PITCH NOT COMPATIBLE WITH MECHANICAL FEED.
- ITEMS 282 AND 283 ARE INTENDED TO BE USED ON LEADMAKER APPLICATION.
- TERMINAL LUBRICANT IS RECOMMENDED.

***WARNING**
 ON INSTALLATION, SET WIRE DISC TO CRIMP HEIGHT REFERENCE SETTING FOR LARGEST WIRE SIZE. CRIMP HEIGHT REFERENCE SETTINGS GREATER THAN THE VALUE SHOWN MAY CAUSE DAMAGE TO THE CRIMP TOOLING, REFER TO THE INSTRUCTION SHEET FOR PROPER SETUP AND ADJUSTMENTS.

PACIFIC VERSION
 Shown on sheets 3 of 4 & 4 of 4
 (Atlantic version shown on sheets 1 of 4 & 2 of 4)

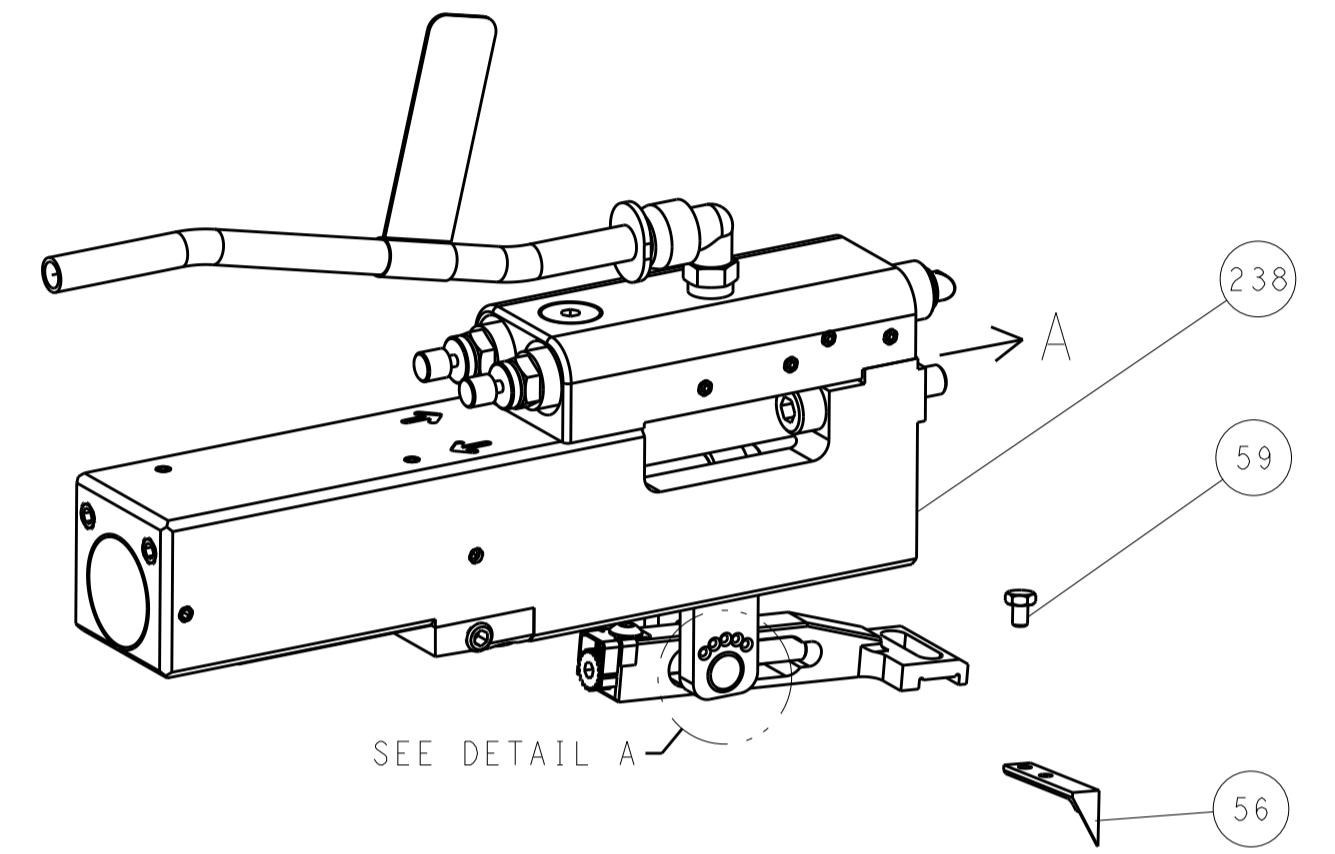
LOC	DIST	REVISIONS					
		P	LTR	DESCRIPTION	DATE	DWN	APVD
A	66	-	-	SEE SHEET 1	-	-	-
-	1	-	-	SCR, BHSC, RoHS (M3 X 8)	-	-	284
-	1	-	-	STABILIZER	-	-	283
-	1	-	-	HOLDER, STABILIZER	-	-	282
-	1	-	-	WASHER, FLAT, REG M5	-	-	281
-	1	-	-	STUD, ADJUSTMENT SCREW	-	-	280
-	1	-	-	DEPRESSOR, WIRE	-	-	265
-	1	-	-	RESIN COLLAR, FLANGED	-	-	261
-	1	-	-	CAM, SNAIL, INSULATION ADJUSTMENT	-	-	244
-	1	-	-	WASHER, WAVE SPRING, CREST-TO-CREST	-	-	243
-	1	-	-	RETAINER, INSULATION DIAL	-	-	242
-	1	-	-	SCR, SKT HD CAP M3 X 4.0	-	-	241
-	1	-	-	AIR FEED MODULE	-	-	238
-	1	-	-	STANDOFF, HOLD-DOWN	-	-	180
-	1	-	-	PIN, SLOTTED SPRING 3.0 X 20.0	-	-	177
-	1	-	-	SPRING, COMPRESSION	-	-	176
-	1	-	-	GUIDE PIN, HOLDDOWN	-	-	175
-	1	-	-	GUIDE PIN, HOLDDOWN	-	-	174
-	REF	-	-	COUNTER, MAGNETIC	-	-	164
-	1	-	-	FEED CAM, AIR FEED	-	-	151
-	1	-	-	SCREW, SHOULDER	-	-	144
-	4	-	-	SCR, SKT HD CAP, RoHS, M4 X 20	-	-	143
-	1	-	-	APPLICATOR BASIC ASSEMBLY, SF	-	-	141
-	1	-	-	RAM ASSEMBLY, SF PACIFIC	-	-	140
-	1	-	-	SPRING, COMPRESSION	-	-	121
-	1	-	-	ASSY, LUBRICATOR, SIDE FEED	-	-	113
-	1	-	-	SCREW, LOCKING	-	-	99
-	1	-	-	POST, LOCKING	-	-	98
-	1	-	-	FRONT STRIP GUIDE	-	-	96
-	2	-	-	SCR, SKT HD CAP, RoHS, M3 X 8.0	-	-	95
-	1	-	-	SCR, SKT HD CAP M3 X 45.0	-	-	93
-	1	-	-	DOCUMENTATION PACKAGE	-	-	71
-	1	-	-	TAG, IDENTIFICATION	-	-	67
-	2	-	-	SCREW, DRIVE, RH, RoHS, 2 x .188	-	-	66
-	2	-	-	SCR, SET, FLT PNT, M5 X 20.0	-	-	61
-	1	-	-	SCR, HEX HD CAP, M4 X 6.0	-	-	59
-	1	-	-	PAWL, FEED	-	-	56
-	1	-	-	NUT, HEX, REG, RoHS, M3.5	-	-	52
-	1	-	-	HOLDDOWN, TERMINAL	-	-	51
-	1	-	-	SCR, SKT HD CAP M4 X 6.0	-	-	49
-	1	-	-	SCR, BHSC, RoHS (M8 X 25)	-	-	41
-	1	-	-	SUPPORT, TERMINAL	-	-	34
-	2	-	-	SCR, BHSC, RoHS (M4 X 20)	-	-	33
-	2	-	-	SPACER, CYLINDRICAL, STRIP GUIDE	-	-	30
-	1	-	-	PLATE, STRIP GUIDE	-	-	29
-	1	-	-	SPACER, CRIMPER	-	-	28
-	2	-	-	SPRING, COMPRESSION	-	-	27
-	1	-	-	LEVER, DRAG RELEASE	-	-	26
-	1	-	-	DRAG, TERMINAL	-	-	25
-	1	-	-	STRIP GUIDE	-	-	24
-	1	-	-	SCR, SKT HD SHLDR 5.0 DIA X 6.0	-	-	23
-	1	-	-	SCR, SKT HD CAP, RoHS, M4 X 8.0	-	-	21
-	2	-	-	WASHER, FLAT, REG M4	-	-	20
-	1	-	-	STRIPPER	-	-	19
-	1	-	-	INSERT, SHEAR	-	-	13
-	1	-	-	SPRING, COMPRESSION	-	-	12
-	1	-	-	SCR, SET, FLT PNT, M6 X 25.0	-	-	11
-	1	-	-	SHEAR HOLDER, FRONT	-	-	10
-	1	-	-	FLOATING SHEAR, FRONT	-	-	9
-	1	1	-	ANVIL, COMBINATION	-	-	8
-	-	-	-	-	-	-	7
-	-	-	-	-	-	-	6
-	1	-	-	DEPRESSOR, SHEAR	-	-	5
-	1	-	-	BLOCK, CRIMPER SPACER	-	-	4
-	1	1	-	CRIMPER, INSULATION F PREMIUM	-	-	3
-	-	-	-	-	-	-	2
-	1	1	-	CRIMPER, WIRE PREMIUM	-	-	1

DIMENSIONS: mm		TOLERANCES UNLESS OTHERWISE SPECIFIED:		DWN: C. TOPPER 16MAR2018		CHK: G. BAILEY 16MAR2018		APVD: DEGRANGE 16MAR2018	
0 PLC ± .15		1 PLC ± .10		NAME: Ocean Side Feed		PRODUCT SPEC: -		SIZE: A1	
2 PLC ± .075		3 PLC ± .05		APPLICATION SPEC: -		CAGE CODE: 00779		DRAWING NO: 2266288	
4 PLC ± .03		ANGLES: ± .5		WEIGHT: -		SCALE: 1:2		SHEET 3 OF 4	
MATERIAL: -		FINISH: -		Customer Accessible Production Drawing		REV: D		REV: -	

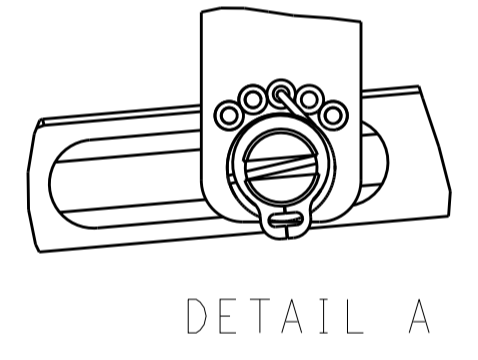
LOC		DIST		REVISIONS			
A	66	P	LTM	DESCRIPTION	DATE	DWN	APVD
				SEE SHEET 1			

FEED TYPE

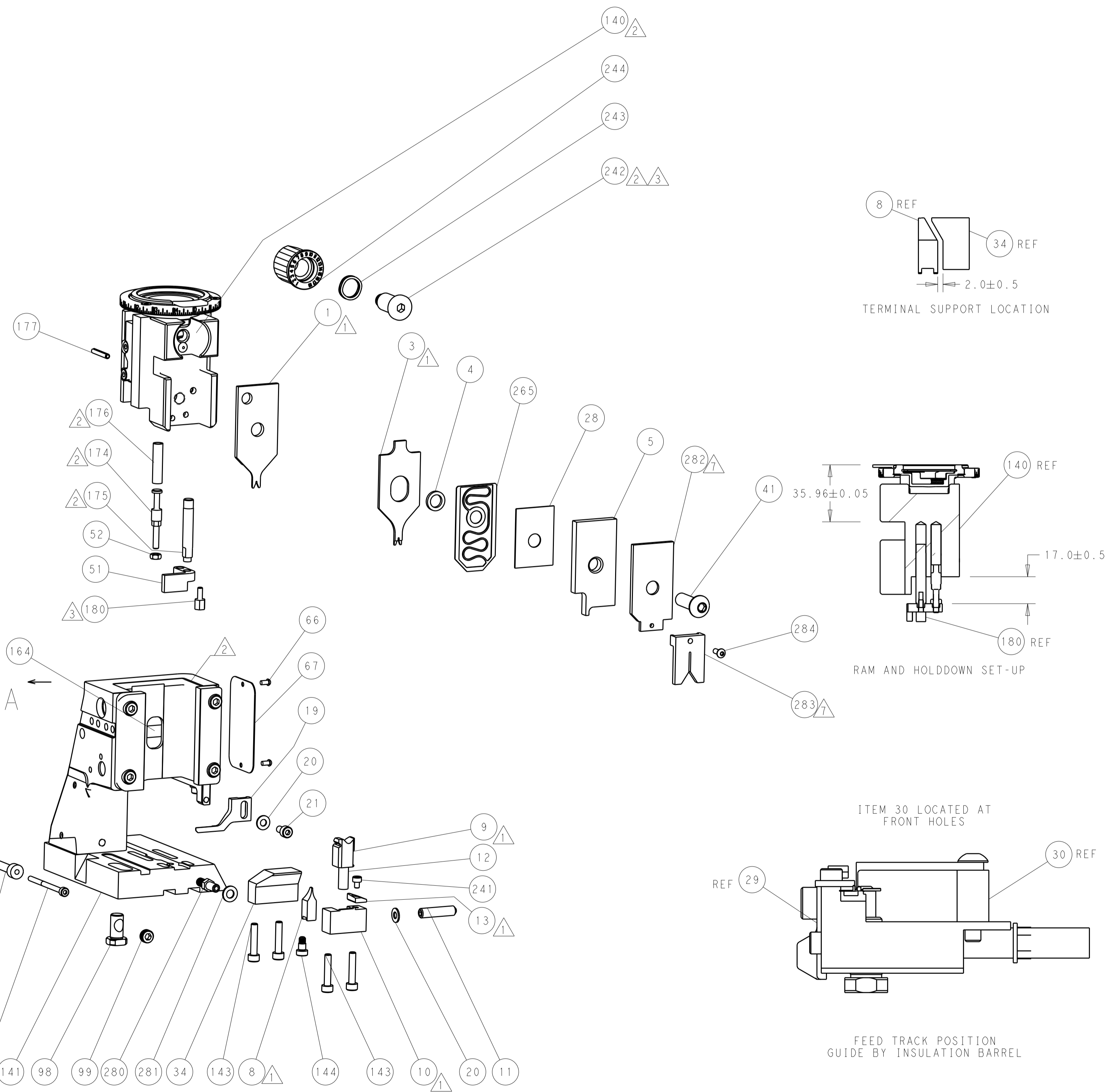
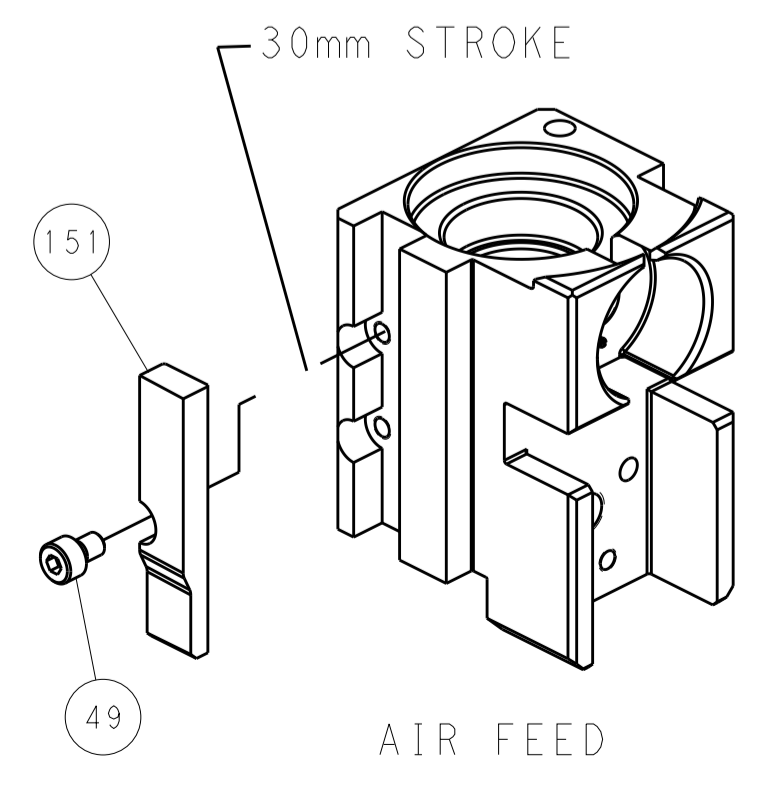
PNEUMATIC



FEED SPRING SETTING POSITION (SHOWN FROM REAR SIDE)



CAM POSITION



PACIFIC VERSION
 Shown on sheets 3 of 4 & 4 of 4
 (Atlantic version shown on sheets 1 of 4 & 2 of 4)

DIMENSIONS: mm 		TOLERANCES UNLESS OTHERWISE SPECIFIED: 0 PLC ± 1 PLC ± 2 PLC ± 3 PLC ± 4 PLC ± ANGLES ±		DWN C. TOPPER 16MAR2018 CHK G. BAILEY 16MAR2018 APVD J. DEGRANGE 16MAR2018 PRODUCT SPEC APPLICATION SPEC WEIGHT Customer Accessible Production Drawing		NAME: Ocean Side Feed Applier SIZE: A1 CAGE CODE: 00779 DRAWING NO: 2266288 SCALE: 1:2 SHEET 4 OF 4 REV D		STE TE Connectivity Harrisburg, PA 17105-3608	
--------------------	--	---	--	--	--	---	--	--	--