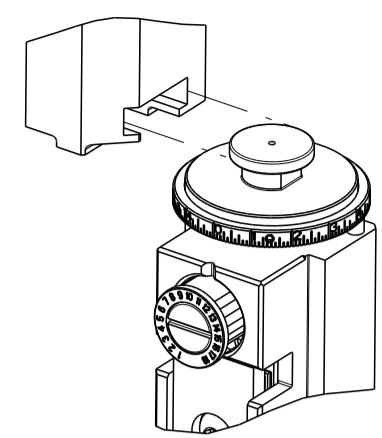


| PART NUMBER | REVISION | DESCRIPTION | FEED TYPE |
|-------------|----------|---------------------------------|-----------|
| 2151625-2 | D | FINE CRIMP HEIGHT ADJUST | PNEUMATIC |
| 7-2151625-2 | D | PNEUMATIC AND CRIMP TOOLING KIT | PNEUMATIC |
| 7-2151625-7 | A | CRIMP TOOLING KIT | - |

ATLANTIC VERSION TERMINATOR INTERFACE ADAPTER



| APPLICATOR DATA | | |
|-----------------|----------------|------|
| CRIMP | SIZE | TYPE |
| WIRE | 5.33 mm [.210] | F |
| INSUL | 8.71 mm [.343] | O |

APPLICATOR INSTRUCTIONS 408-35042

| TERMINAL DATA: FCI TERMINAL | | FCI CRIMP SPECIFICATION | |
|------------------------------------|--------------|------------------------------|----------|
| TERMINAL NAME: 9.5 FEMALE TERMINAL | | | |
| WIRE STRIP LENGTH | | INSULATION DIAMETER RANGE | |
| 7.50-8.50 mm [.295-.335 IN] | | Ø5.10-5.30 mm [.201-.209 IN] | |
| TERMINAL APPLICATION SPECIFICATION | 9 084 16 00 | - | - |
| TERMINALS APPLIED | | | |
| TE TERMINAL | FCI TERMINAL | TE SEAL | FCI SEAL |
| 1949505-1 | 60070271 | 2113249-1 | 60993303 |
| | | 2113249-2 | 60993304 |

| WIRE SIZE | CRIMP HEIGHT mm [INCH] | CRIMP HEIGHT REFERENCE SETTING |
|-----------|-------------------------------|--------------------------------|
| 10.00mm2 | 3.30 +/- 0.05 [.130 +/- .002] | 4.6 |
| 8.00mm2 | 2.97 +/- 0.05 [.117 +/- .002] | 9.3 |

- RECOMMENDED SPARE PARTS
- REFER TO SUPPLIED INSTRUCTION SHEET FOR CLEANING, LUBRICATION AND STORAGE OF APPLICATOR.
- APPLY PART NUMBER 2-23419-6 LOCTITE TO THREADS OF ITEM 242.
- CRIMP HEIGHT REFERENCE SETTING WAS THE SETTING USED WHEN THE APPLICATOR WAS QUALIFIED AT THE FACTORY. ADJUSTMENT MAY BE NECESSARY WHEN RUNNING APPLICATOR IN THE FIELD.
- TERMINAL PITCH NOT COMPATIBLE WITH MECHANICAL FEED.
- THIS APPLICATOR APPLIES TERMINAL WITH A SEAL.
- APPLY TORO-SEAL IN ALLEN SOCKET TO FILL HOLE AFTER FLAT HD HAS BEEN ADJUSTED TO CORRECT HEIGHT AT QUALIFICATION. APPLY #1-23419-5 LOC-TITE TO THREADS.
- CUT TO LENGTH AT ASSEMBLY.
- 9. UNLESS SPECIFIED OTHERWISE TORQUE VALUES SHALL BE USED PER DOCUMENT, 101-35000.

***WARNING**
ON INSTALLATION, SET WIRE DISC TO CRIMP HEIGHT REFERENCE SETTING FOR LARGEST WIRE SIZE. CRIMP HEIGHT REFERENCE SETTINGS GREATER THAN THE VALUE SHOWN MAY CAUSE DAMAGE TO THE CRIMP TOOLING, REFER TO THE INSTRUCTION SHEET FOR PROPER SETUP AND ADJUSTMENTS.

ATLANTIC VERSION
Shown on sheets 1 of 4 & 2 of 4
(Pacific version shown on sheets 3 of 4 & 4 of 4)

| LOC | DIST | REVISIONS | | | | | |
|-----|------|-----------|-----|---------------|-----------|-----|------|
| A | 66 | P | LTN | DESCRIPTION | DATE | DWN | APVD |
| | | A | | RELEASED | 30NOV2012 | RK | TE |
| | | B | | ECR-13-012621 | 09AUG2013 | YY | UG |
| | | C | | ECR-23-175045 | 11MAY2023 | ROY | TIM |
| | | D | | ECR-23-179843 | 29JUN2023 | JWC | TIM |

| | | | | | |
|---|-----|-----|-------------|-------------------------------------|-----|
| - | 1 | 1 | 1803945-4 | TONKER | 300 |
| - | 1 | 1 | 22278-9 | SPRING, COMPRESSION | 299 |
| - | 2 | 2 | 4-18032-3 | SCR, SET, FLT PNT, M3 X 6.0 | 298 |
| - | 1 | 1 | 1803944-1 | SPACER, TONKER | 297 |
| - | 1 | 1 | 2-455888-2 | SPACER, CRIMPER | 259 |
| - | 1 | 1 | 2119641-1 | FEED CAM, AIR FEED | 248 |
| - | 1 | 1 | 2119082-8 | CAM, SWAIL, INSULATION ADJUSTMENT | 244 |
| - | 1 | 1 | 2079764-1 | WASHER, WAVE SPRING, CREST-TO-CREST | 243 |
| - | 1 | 1 | 2119083-1 | RETAINER, INSULATION DIAL | 242 |
| - | 1 | 1 | 7-18023-7 | SCR, SKT HD CAP M3 X 4.0 | 241 |
| - | 1 | 1 | 2844940-8 | AIR FEED MODULE | 238 |
| - | REF | REF | 994970-2 | COUNTER, MAGNETIC | 164 |
| - | 1 | 1 | 1-22281-8 | SPRING, COMPRESSION | 121 |
| - | 1 | 1 | 1-18028-2 | WASHER, FLAT, REG M4 | 119 |
| - | 1 | 1 | 2-690438-2 | FRONT STRIP GUIDE | 96 |
| - | 2 | 2 | 2168083-1 | SCR, SKT HD CAP, RoHS, M3 X 8.0 | 95 |
| - | 1 | 1 | 2168083-6 | SCR, SKT HD CAP, RoHS, M5 X 65 | 93 |
| - | 1 | 1 | 1-455888-6 | SPACER, CRIMPER | 82 |
| - | 1 | 1 | 1803607-3 | DOCUMENTATION PACKAGE | 71 |
| - | 1 | 1 | 2119740-1 | TAG, IDENTIFICATION | 67 |
| - | 2 | 2 | 2168078-1 | SCREW, DRIVE, RH, RoHS, 2 x .188 | 66 |
| - | 2 | 2 | 2-18032-5 | SCR, SET, FLT PNT, M5 X 20.0 | 61 |
| - | 1 | 1 | 2168083-2 | SCR, SKT HD CAP, RoHS, M4 X 8.0 | 60 |
| - | 1 | 1 | 5-18022-5 | SCR, HEX HD CAP, M4 X 6.0 | 59 |
| - | 1 | 1 | 18023-6 | SCR, SKT HD CAP M3 X 16.0 | 57 |
| - | 1 | 1 | 1338683-8 | FEED PAWL | 56 |
| - | 4 | 4 | 2168083-3 | SCR, SKT HD CAP, RoHS, M4 X 12.0 | 54 |
| - | 2 | 2 | 2168083-3 | SCR, SKT HD CAP, RoHS, M4 X 12.0 | 53 |
| - | 1 | 1 | 18023-9 | SCR, SKT HD CAP M4 X 6.0 | 49 |
| - | 1 | 1 | 1-1803583-7 | APPLICATOR BASIC ASSEMBLY, SF | 46 |
| - | 1 | 1 | 1803515-2 | RAM ASSEMBLY, SF ATLANTIC | 44 |
| - | 1 | 1 | 1-2079383-5 | SCR, BHSC, RoHS (M8 X 40) | 41 |
| - | 1 | 1 | 3-1752356-3 | SUPPORT, TERMINAL | 34 |
| - | 2 | 2 | 1-2079383-3 | SCR, BHSC, RoHS (M4 X 25) | 33 |
| - | 2 | 2 | 3-2844962-7 | SPACER, CYLINDRICAL, STRIP GUIDE | 30 |
| - | 1 | 1 | 2844938-9 | PLATE, STRIP GUIDE | 29 |
| - | 1 | 1 | 1-455888-0 | SPACER, CRIMPER | 28 |
| - | 2 | 2 | 22283-1 | SPRING, COMPRESSION | 27 |
| - | 1 | 1 | 356835-1 | LEVER, DRAG RELEASE | 26 |
| - | 1 | 1 | 240792-1 | DRAG, TERMINAL | 25 |
| - | 1 | 1 | 1320928-4 | STRIP GUIDE | 24 |
| - | 1 | 1 | 980371-4 | SCR, SKT HD SHLDR 5.0 DIA X 6.0 | 23 |
| - | 1 | 1 | 2168083-2 | SCR, SKT HD CAP, RoHS, M4 X 8.0 | 21 |
| - | 1 | 1 | 1-18028-2 | WASHER, FLAT, REG M4 | 20 |
| - | 1 | 1 | 2119533-5 | STRIPPER, SIDE FEED | 19 |
| - | 1 | 1 | 2119806-1 | INSERT, SHEAR | 13 |
| - | 1 | 1 | 4-22280-7 | SPRING, COMPRESSION | 12 |
| - | 1 | 1 | 1-356885-3 | STOP, SHEAR | 11 |
| - | 1 | 1 | 2119805-7 | SHEAR HOLDER, FRONT | 10 |
| - | 1 | 1 | 318059-9 | FLOATING SHEAR, FRONT | 9 |
| - | 1 | 2 | 1633930-5 | ANVIL, COMBINATION | 8 |
| - | - | - | - | - | 7 |
| - | - | - | - | - | 6 |
| - | 1 | 1 | 1803080-1 | DEPRESSOR, SHEAR | 5 |
| - | 1 | 1 | 4-238011-5 | BLOCK, CRIMPER SPACER | 4 |
| - | 1 | 2 | 4-2119784-8 | CRIMPER, INSULATION O PREMIUM | 3 |
| - | 1 | 1 | 1-455888-9 | SPACER, CRIMPER | 2 |
| - | 1 | 2 | 4-1673600-4 | CRIMPER, WIRE | 1 |

| DIMENSIONS: | | TOLERANCES UNLESS OTHERWISE SPECIFIED: | | MATERIAL: | | FINISH: | | WEIGHT: | | SCALE: | |
|-------------|---------|--|---------|-----------|---------|---------|--------|---------|--|--------|--|
| mm | 0 PLC ± | 1 PLC ± | 2 PLC ± | 3 PLC ± | 4 PLC ± | ANGLES | FINISH | | | 1:2 | |
| | | | | | | | | | | | |

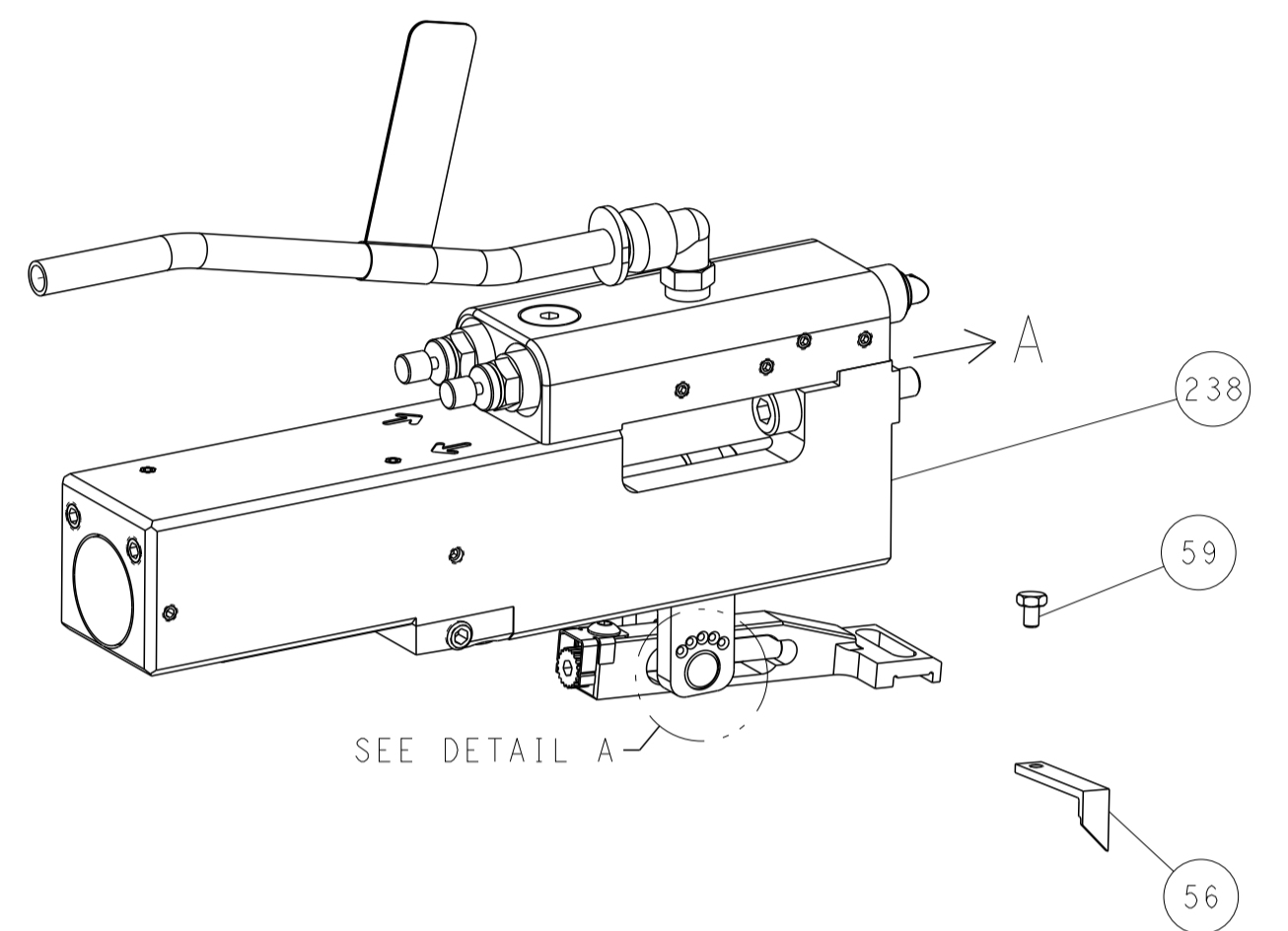
| OWN | CHK | DATE | NAME | SIZE | CAGE CODE | DRAWING NO | RESTRICTED TO |
|------------|----------|-----------|-------------|------|-----------|------------|---------------|
| R. KNEPPER | T. ELBIN | 03MAY2012 | M. CLIFFORD | A1 | 00779 | 2151625 | |

Customer Accessible Production Drawing

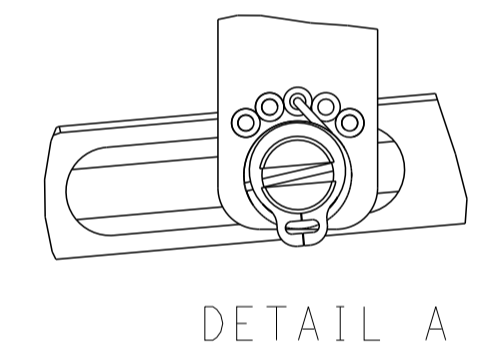
| LOC | DIST | REVISIONS | | | | | |
|-----|------|-----------|-----|-------------|------|-----|------|
| A | 66 | P | LTN | DESCRIPTION | DATE | DWN | APVD |
| | | - | | SEE SHEET 1 | - | - | - |

FEED TYPE

PNEUMATIC

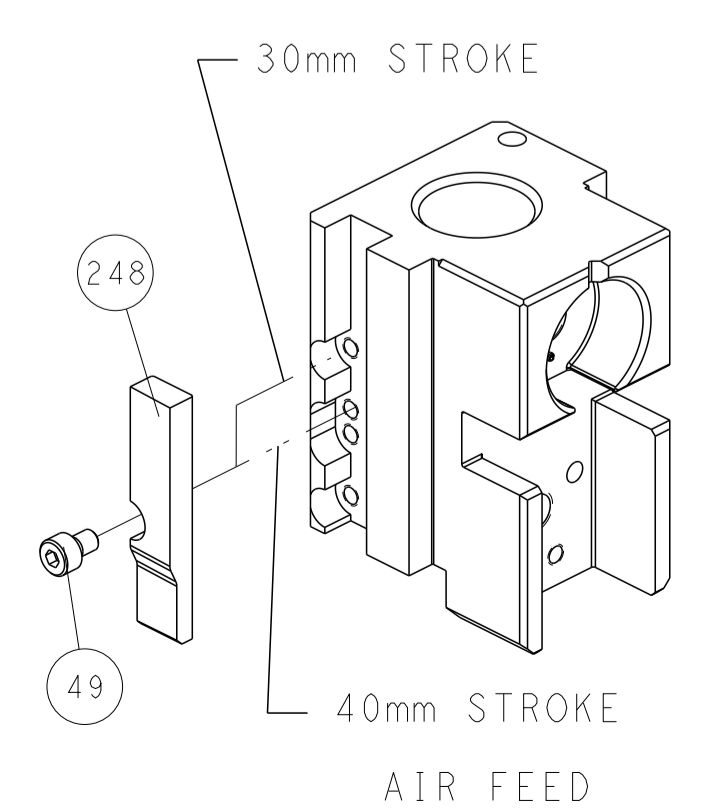


FEED SPRING SETTING POSITION
(SHOWN FROM REAR SIDE)

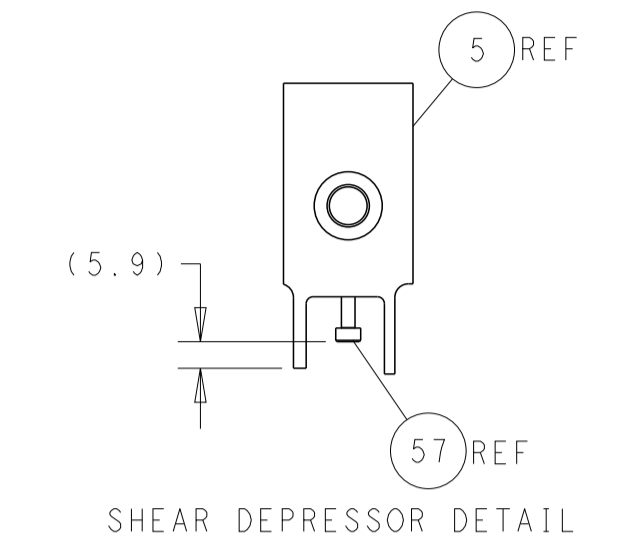
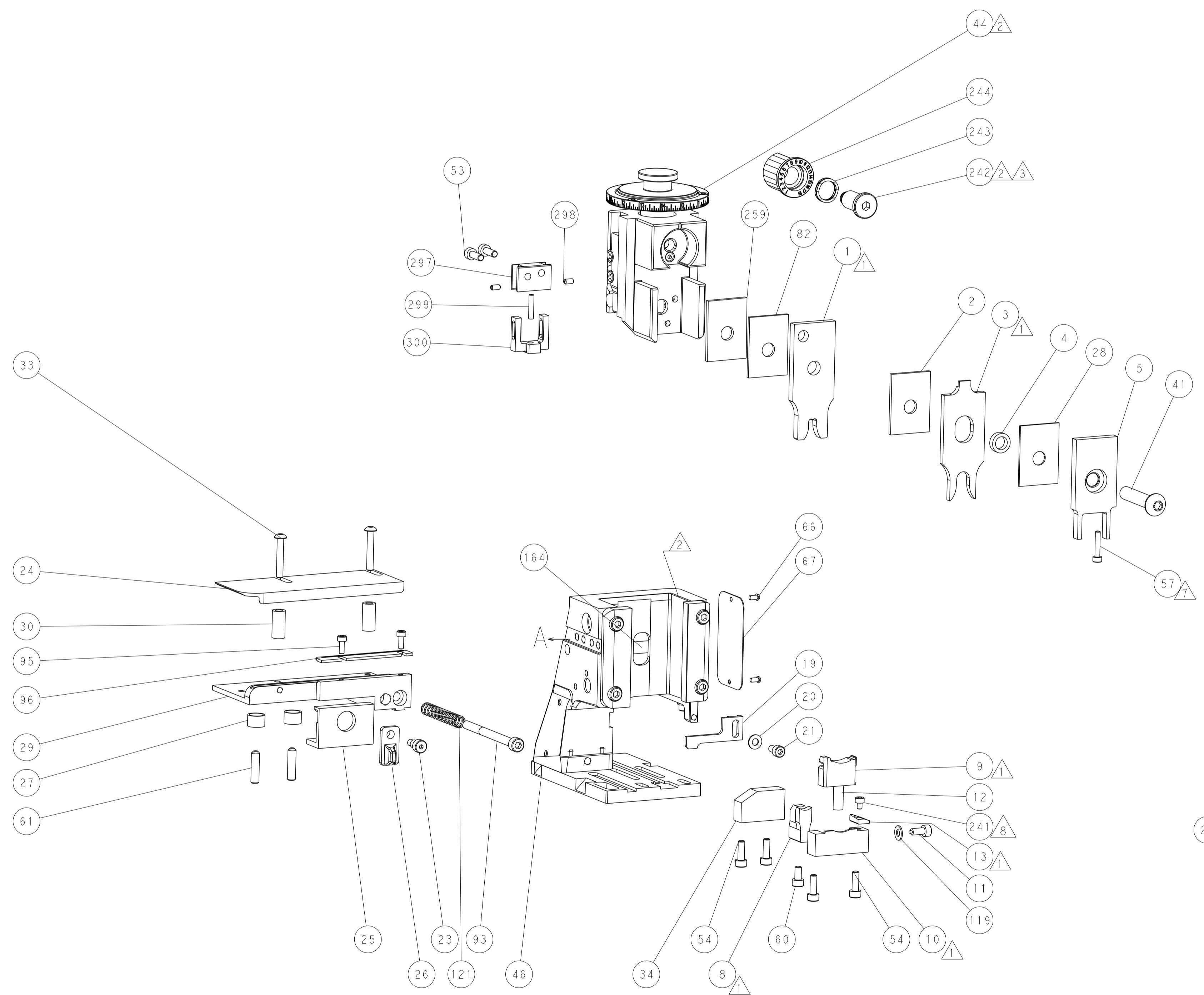


DETAIL A

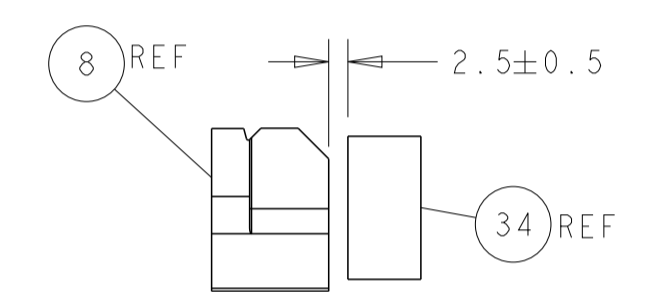
CAM POSITION



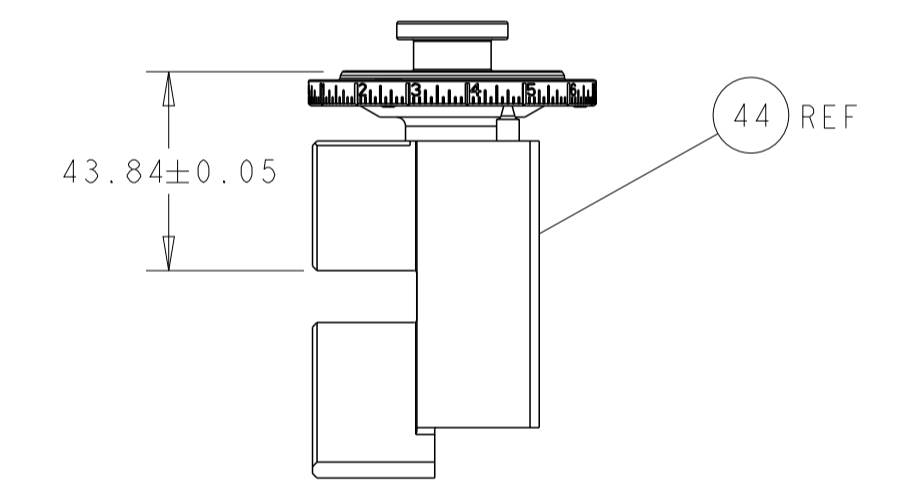
AIR FEED



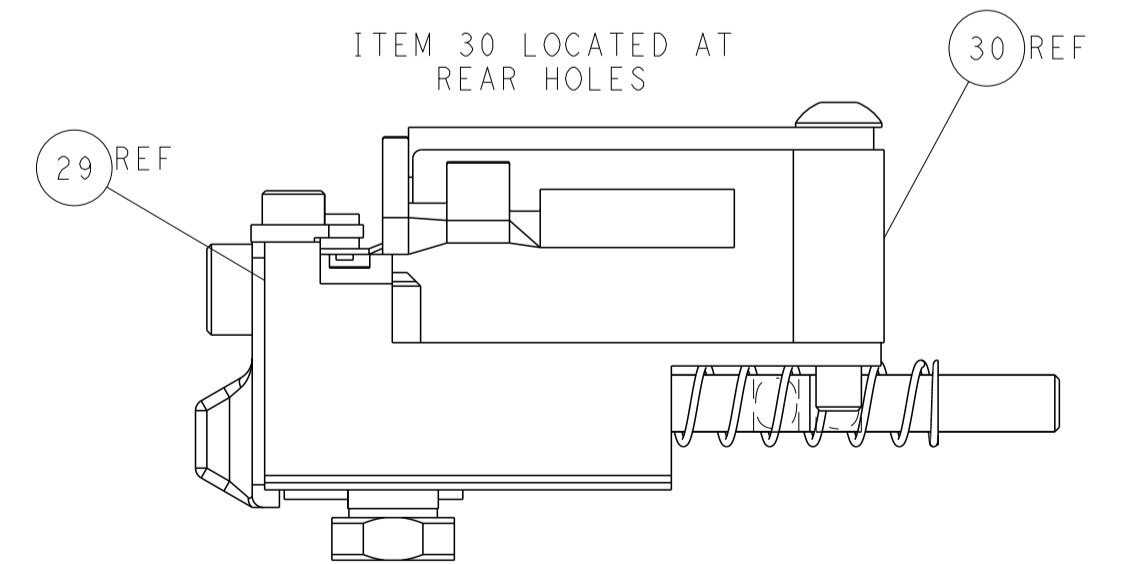
SHEAR DEPRESSOR DETAIL



TERMINAL SUPPORT LOCATION



RAM SET-UP



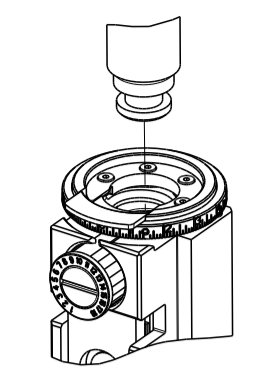
FEED TRACK POSITION
GUIDE BY INSULATION BARREL

ATLANTIC VERSION
 Shown on sheets 1 of 4 & 2 of 4
 (Pacific version shown on sheets 3 of 4 & 4 of 4)

| | | | |
|---|--|---|--|
| <small>THIS DRAWING IS UNPUBLISHED. RELEASED FOR PUBLICATION. ALL RIGHTS RESERVED. THIS DRAWING IS THE PROPERTY OF TYCO ELECTRONICS CORPORATION. IT IS TO BE USED ONLY FOR THE PURPOSES AND IN THE QUANTITIES SPECIFIED IN THE ORDER. IT IS NOT TO BE REPRODUCED OR TRANSMITTED IN ANY FORM OR BY ANY MEANS, ELECTRONIC OR MECHANICAL, INCLUDING PHOTOCOPYING, RECORDING, OR BY ANY INFORMATION STORAGE AND RETRIEVAL SYSTEM, WITHOUT THE WRITTEN PERMISSION OF TYCO ELECTRONICS CORPORATION.</small> | | DWN: R. KNEPPER 03MAY2012 CHK: T. ELBIN 03MAY2012 APVD: M. CLIFFORD 03MAY2012 | TE Connectivity Harrisburg, PA 17105-3608 |
| DIMENSIONS: mm TOLERANCES UNLESS OTHERWISE SPECIFIED: 0 PLC ± 1 PLC ± 2 PLC ± 3 PLC ± 4 PLC ± ANGLES ± FINISH | | NAME: Ocean Side Feed Applicator APPLICATION SPEC: - PRODUCT SPEC: - WEIGHT: - SCALE: 1:2 | SIZE: A1 CAGE CODE: 00779 DRAWING NO: 2151625 SHEET: 2 OF 4 REV: D |
| MATERIAL: - FINISH: - | | Customer Accessible Production Drawing | |

| PART NUMBER | REVISION | DESCRIPTION | FEED TYPE |
|-------------|----------|--------------------------|-----------|
| 2-2151625-2 | D | FINE CRIMP HEIGHT ADJUST | PNEUMATIC |
| 7-2151625-7 | A | CRIMP TOOLING KIT | - |

PACIFIC VERSION TERMINATOR
 INTERFACE ADAPTER



| APPLICATOR DATA | | |
|--------------------------------------|----------------|------|
| CRIMP | SIZE | TYPE |
| WIRE | 5.33 mm [.210] | F |
| INSUL | 8.71 mm [.343] | O |
| APPLICATOR INSTRUCTIONS 408-35042 | | |

| TERMINAL DATA: FCI TERMINAL | | FCI CRIMP SPECIFICATION | |
|------------------------------------|--------------|------------------------------|----------|
| TERMINAL NAME: 9.5 FEMALE TERMINAL | | | |
| WIRE STRIP LENGTH | | INSULATION DIAMETER RANGE | |
| 7.50-8.50 mm [.295-.335 IN] | | ∅5.10-5.30 mm [.201-.209 IN] | |
| TERMINAL APPLICATION SPECIFICATION | 9 084 16 00 | | |
| TERMINALS APPLIED | | | |
| TE TERMINAL | FCI TERMINAL | TE SEAL | FCI SEAL |
| 1949505-1 | 60070271 | 2113249-1 | 60993303 |
| | | 2113249-2 | 60993304 |

| WIRE SIZE | CRIMP HEIGHT mm [INCH] | CRIMP HEIGHT REFERENCE SETTING |
|----------------------|-------------------------------|--------------------------------|
| 10.00mm ² | 3.30 +/- 0.05 [.130 +/- .002] | 4.6 |
| 8.00mm ² | 2.97 +/- 0.05 [.117 +/- .002] | 9.3 |



- RECOMMENDED SPARE PARTS
- REFER TO SUPPLIED INSTRUCTION SHEET FOR CLEANING, LUBRICATION AND STORAGE OF APPLICATOR.
- APPLY PART NUMBER 2-23419-6 LOCTITE TO THREADS OF ITEM 242.
- CRIMP HEIGHT REFERENCE SETTING WAS THE SETTING USED WHEN THE APPLICATOR WAS QUALIFIED AT THE FACTORY. ADJUSTMENT MAY BE NECESSARY WHEN RUNNING APPLICATOR IN THE FIELD.
- TERMINAL PITCH NOT COMPATIBLE WITH MECHANICAL FEED.
- THIS APPLICATOR APPLIES TERMINAL WITH A SEAL.
- APPLY TORQ-SEAL IN ALLEN SOCKET TO FILL HOLE AFTER FLAT HD HAS BEEN ADJUSTED TO CORRECT HEIGHT AT QUALIFICATION. APPLY #1-23419-5 LOC-TITE TO THREADS.
- CUT TO LENGTH AT ASSEMBLY.
- 9. UNLESS SPECIFIED OTHERWISE TORQUE VALUES SHALL BE USED PER DOCUMENT, 101-35000.

***WARNING**
 ON INSTALLATION, SET WIRE DISC TO CRIMP HEIGHT REFERENCE SETTING FOR LARGEST WIRE SIZE. CRIMP HEIGHT REFERENCE SETTINGS GREATER THAN THE VALUE SHOWN MAY CAUSE DAMAGE TO THE CRIMP TOOLING, REFER TO THE INSTRUCTION SHEET FOR PROPER SETUP AND ADJUSTMENTS.

PACIFIC VERSION
 Shown on sheets 3 of 4 & 4 of 4
 (Atlantic version shown on sheets 1 of 4 & 2 of 4)

| LOC | DIST | REVISIONS | | | | | |
|-----|------|-----------|-----|-------------|------|-----|------|
| | | P | LTN | DESCRIPTION | DATE | OWN | APVD |
| A | 66 | - | - | SEE SHEET 1 | - | - | - |

| | | | | |
|---|-----|-------------|-------------------------------------|---------|
| - | 1 | 1803945-4 | TONKER | 300 |
| - | 1 | 22278-9 | SPRING, COMPRESSION | 299 |
| - | 2 | 4-18032-3 | SCR, SET, FLT PNT, M3 X 6.0 | 298 |
| - | 1 | 1803944-1 | SPACER, TONKER | 297 |
| - | 1 | 2-455888-2 | SPACER, CRIMPER | 259 |
| - | 1 | 2119082-8 | CAM, SWAIL, INSULATION ADJUSTMENT | 244 |
| - | 1 | 2079764-1 | WASHER, WAVE SPRING, CREST-TO-CREST | 243 |
| - | 1 | 2119083-1 | RETAINER, INSULATION DIAL | 242 |
| - | 1 | 7-18023-7 | SCR, SKT HD CAP M3 X 4.0 | 241 |
| - | 1 | 2844940-8 | AIR FEED MODULE | 238 |
| - | REF | 994970-2 | COUNTER, MAGNETIC | 164 |
| - | 1 | 2119641-2 | FEED CAM, AIR FEED | 151 |
| - | 1 | 2168083-8 | SCR, SKT HD CAP, RoHS, M4 X 16 | 144 |
| - | 4 | 2168083-9 | SCR, SKT HD CAP, RoHS, M4 X 20 | 143 |
| - | 1 | 1-1803583-8 | APPLICATOR BASIC ASSEMBLY, SF | 141 |
| - | 1 | 1803516-2 | RAM ASSEMBLY, SF PACIFIC | 140 |
| - | 1 | 1-22281-8 | SPRING, COMPRESSION | 121 |
| - | 1 | 1-18028-2 | WASHER, FLAT, REG M4 | 119 |
| - | 1 | 2-690438-2 | FRONT STRIP GUIDE | 96 |
| - | 2 | 2168083-1 | SCR, SKT HD CAP, RoHS, M3 X 8.0 | 95 |
| - | 1 | 2168083-6 | SCR, SKT HD CAP, RoHS, M5 X 6.5 | 93 |
| - | 1 | 1-455888-6 | SPACER, CRIMPER | 82 |
| - | 1 | 1803607-3 | DOCUMENTATION PACKAGE | 71 |
| - | 1 | 2119740-1 | TAG, IDENTIFICATION | 67 |
| - | 2 | 2168078-1 | SCREW, DRIVE, RH, RoHS, 2 x .188 | 66 |
| - | 2 | 2-18032-5 | SCR, SET, FLT PNT, M5 X 20.0 | 61 |
| - | 1 | 5-18022-5 | SCR, HEX HD CAP, M4 X 6.0 | 59 |
| - | 1 | 18023-6 | SCR, SKT HD CAP M3 X 16.0 | 57 |
| - | 1 | 1338683-8 | FEED PAWL | 56 |
| - | 2 | 2168083-3 | SCR, SKT HD CAP, RoHS, M4 X 12.0 | 53 |
| - | 1 | 18023-9 | SCR, SKT HD CAP M4 X 6.0 | 49 |
| - | 1 | 1-2079383-5 | SCR, BHSC, RoHS (M8 X 40) | 41 |
| - | 1 | 3-1752356-3 | SUPPORT, TERMINAL | 34 |
| - | 2 | 1-2079383-3 | SCR, BHSC, RoHS (M4 X 25) | 33 |
| - | 2 | 3-2844962-7 | SPACER, CYLINDRICAL, STRIP GUIDE | 30 |
| - | 1 | 2844938-9 | PLATE, STRIP GUIDE | 29 |
| - | 1 | 1-455888-0 | SPACER, CRIMPER | 28 |
| - | 2 | 22283-1 | SPRING, COMPRESSION | 27 |
| - | 1 | 356835-1 | LEVER, DRAG RELEASE | 26 |
| - | 1 | 240792-1 | DRAG, TERMINAL | 25 |
| - | 1 | 1320928-4 | STRIP GUIDE | 24 |
| - | 1 | 980371-4 | SCR, SKT HD SHLDR 5.0 DIA X 6.0 | 23 |
| - | 1 | 2168083-2 | SCR, SKT HD CAP, RoHS, M4 X 8.0 | 21 |
| - | 1 | 1-18028-2 | WASHER, FLAT, REG M4 | 20 |
| - | 1 | 2119533-5 | STRIPPER, SIDE FEED | 19 |
| - | 1 | 2119806-1 | INSERT, SHEAR | 13 |
| - | 1 | 4-22280-7 | SPRING, COMPRESSION | 12 |
| - | 1 | 1-356885-3 | STOP, SHEAR | 11 |
| - | 1 | 2119805-7 | SHEAR HOLDER, FRONT | 10 |
| - | 1 | 318059-9 | FLOATING SHEAR, FRONT | 9 |
| - | 1 | 1633930-5 | ANVIL, COMBINATION | 8 |
| - | - | - | - | 7 |
| - | - | - | - | 6 |
| - | 1 | 1803080-1 | DEPRESSOR, SHEAR | 5 |
| - | 1 | 4-238011-5 | BLOCK, CRIMPER SPACER | 4 |
| - | 1 | 4-2119784-8 | CRIMPER, INSULATION 0 PREMIUM | 3 |
| - | 1 | 1-455888-9 | SPACER, CRIMPER | 2 |
| - | 1 | 4-1673600-4 | CRIMPER, WIRE | 1 |
| - | 77 | -22 | PART NO | ITEM NO |

| | | | | | | | |
|----------------|---|--|---|------------|--|---------------|--|
| DIMENSIONS: mm | | TOLERANCES UNLESS OTHERWISE SPECIFIED: | | DRAWING NO | | RESTRICTED TO | |
| 0 PLC | ± | 0 PLC | ± | 03MAY2012 | Customer Accessible Production Drawing | | |
| 1 PLC | ± | 1 PLC | ± | 03MAY2012 | SCALE 1:2 SHEET 3 OF 4 REV D | | |
| 2 PLC | ± | 2 PLC | ± | 03MAY2012 | | | |
| 3 PLC | ± | 3 PLC | ± | 03MAY2012 | | | |
| 4 PLC | ± | 4 PLC | ± | 03MAY2012 | | | |
| ANGLES | ± | ANGLES | ± | 03MAY2012 | | | |
| FINISH | ± | FINISH | ± | 03MAY2012 | | | |

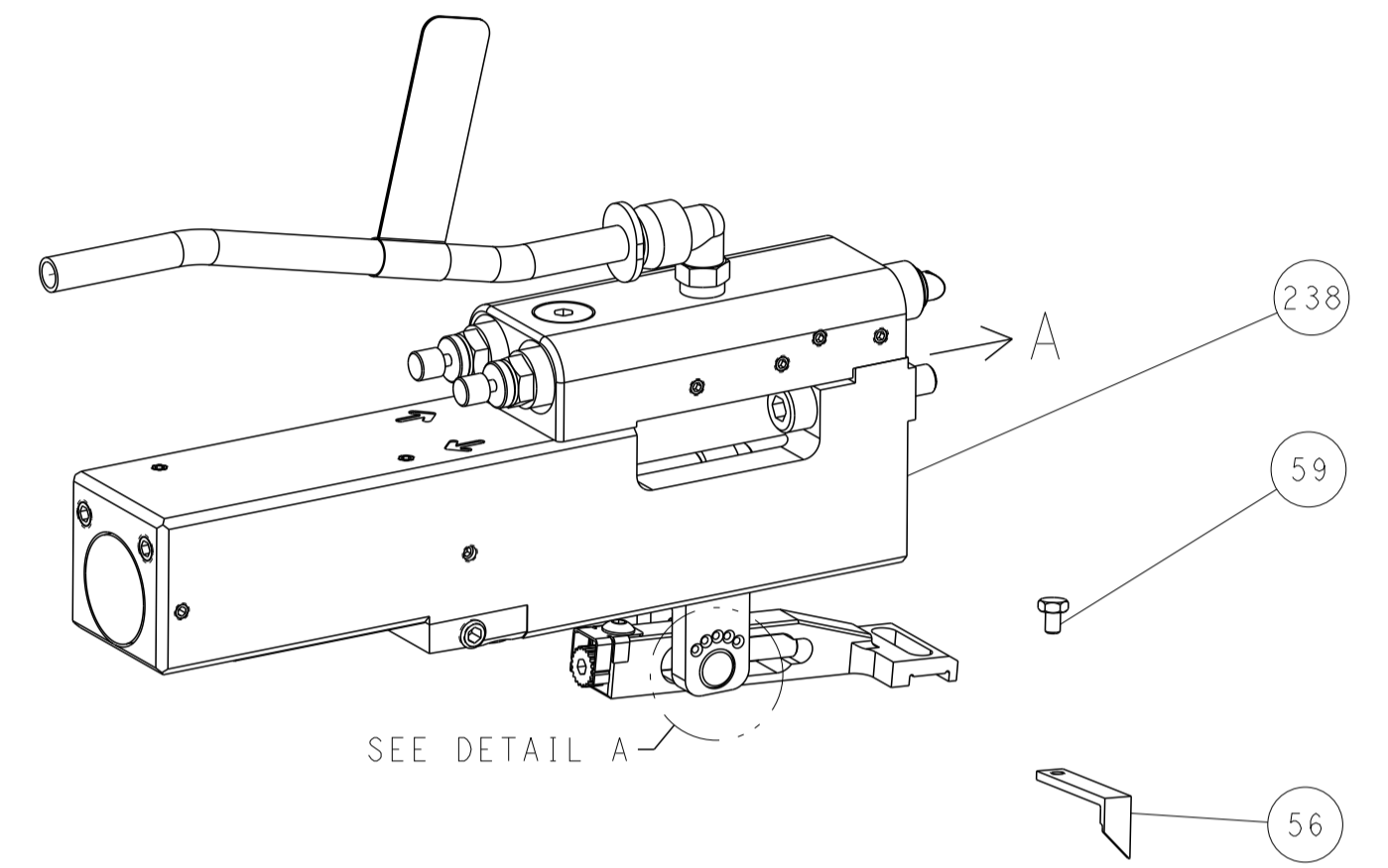


Ocean Side Feed
 Applicator

| LOC | DIST | REVISIONS | | | | | |
|-----|------|-----------|-----|-------------|------|-----|------|
| | | P | LTN | DESCRIPTION | DATE | DWN | APVD |
| A | 66 | - | - | SEE SHEET 1 | - | - | - |

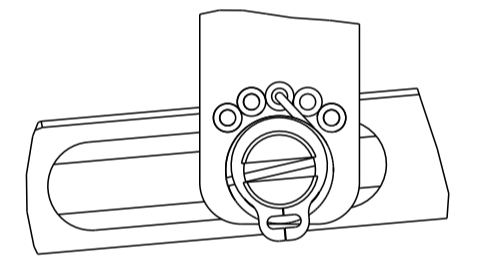
FEED TYPE

PNEUMATIC



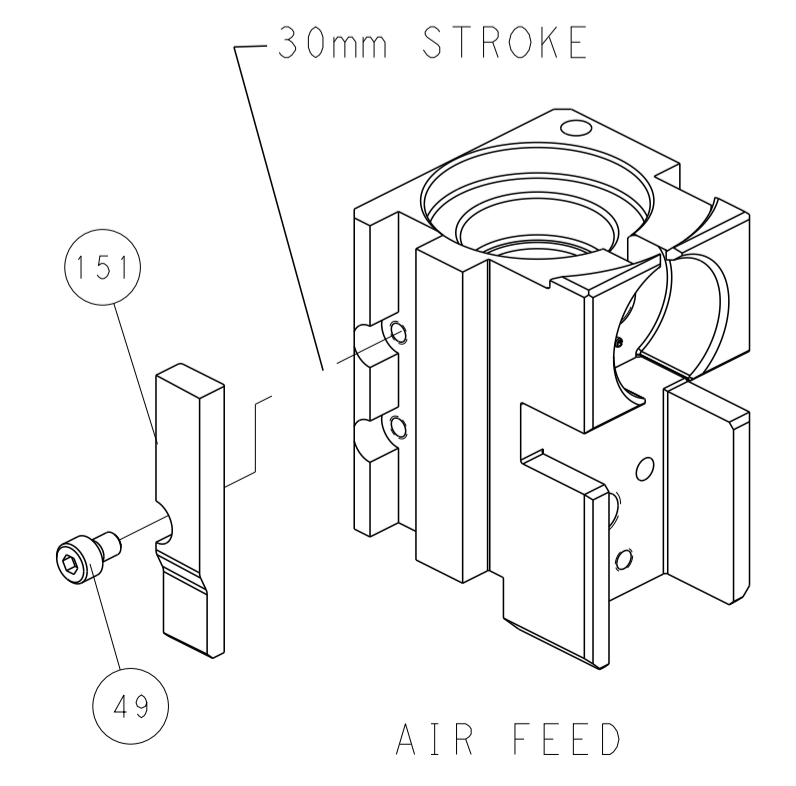
SEE DETAIL A

FEED SPRING SETTING POSITION (SHOWN FROM REAR SIDE)

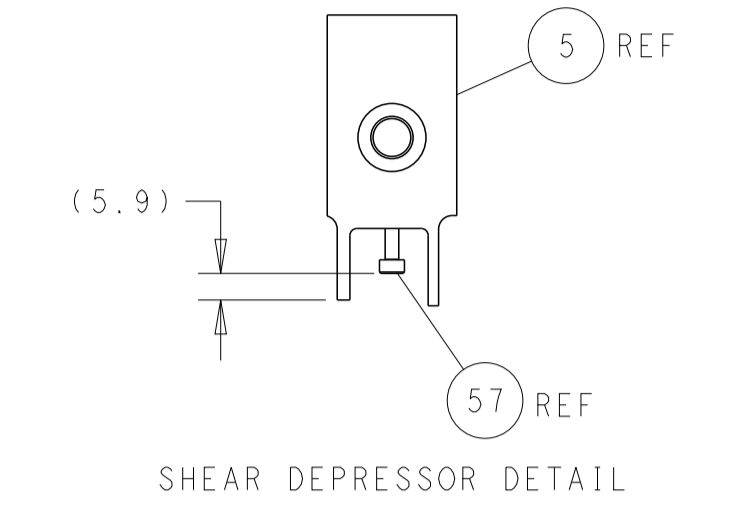
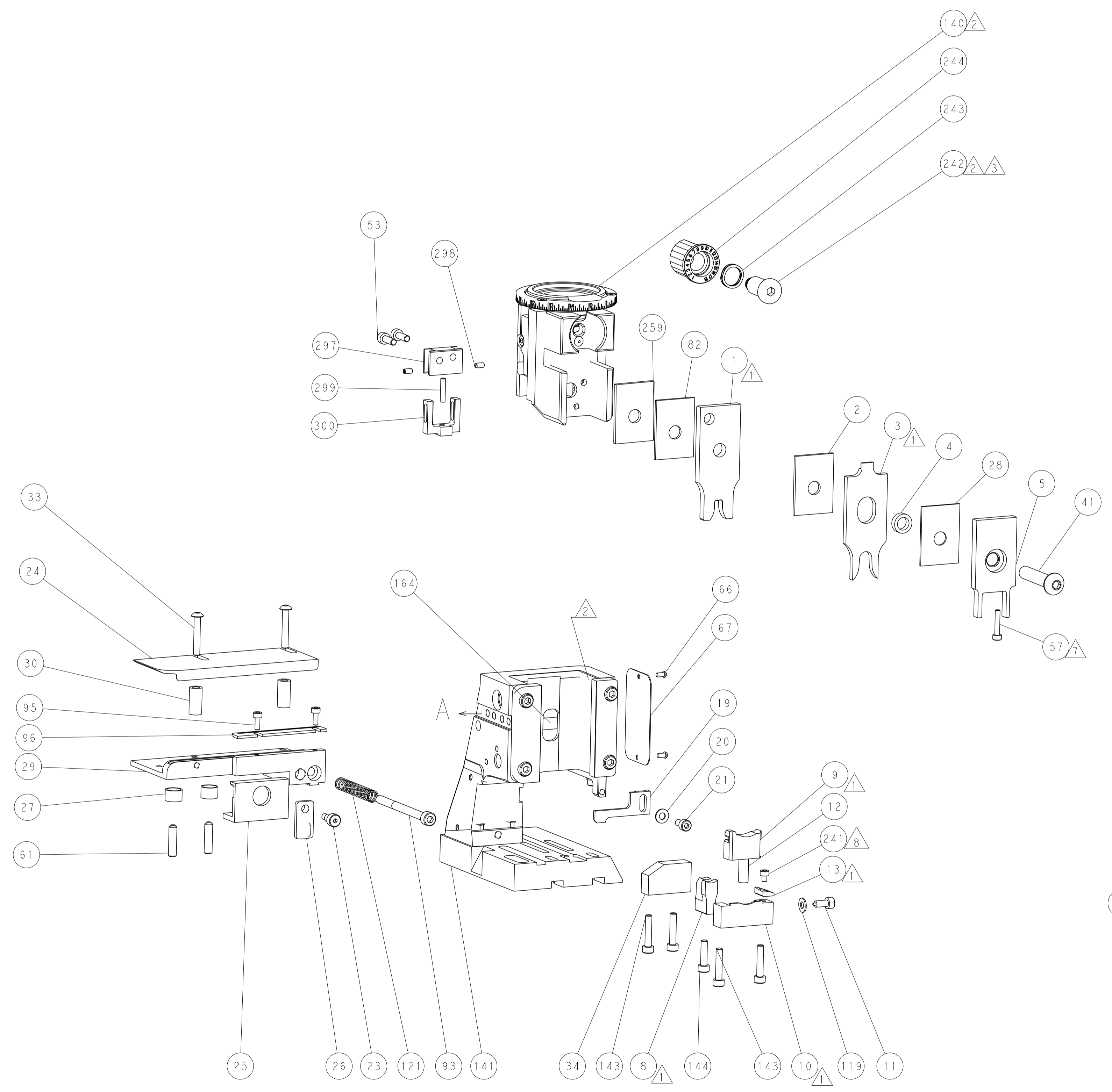


DETAIL A

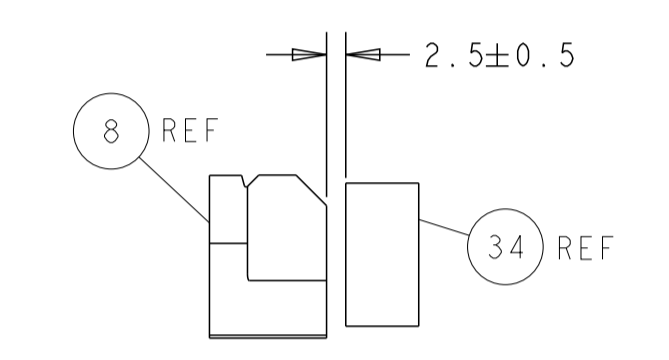
CAM POSITION



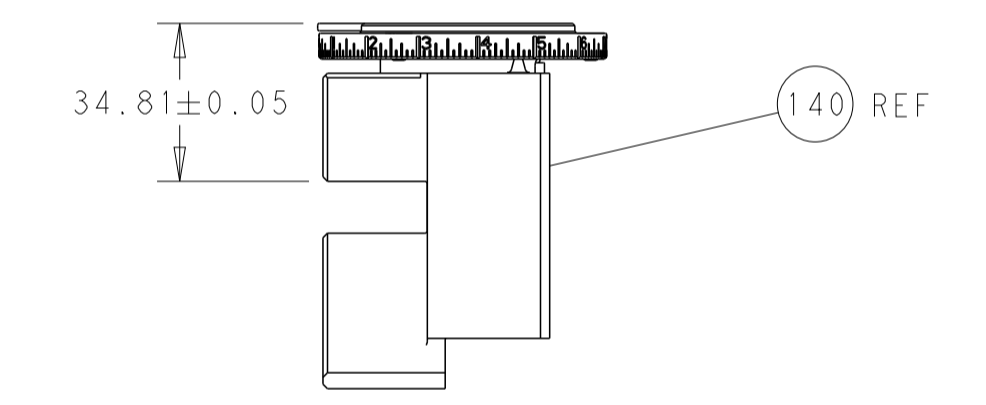
AIR FEED



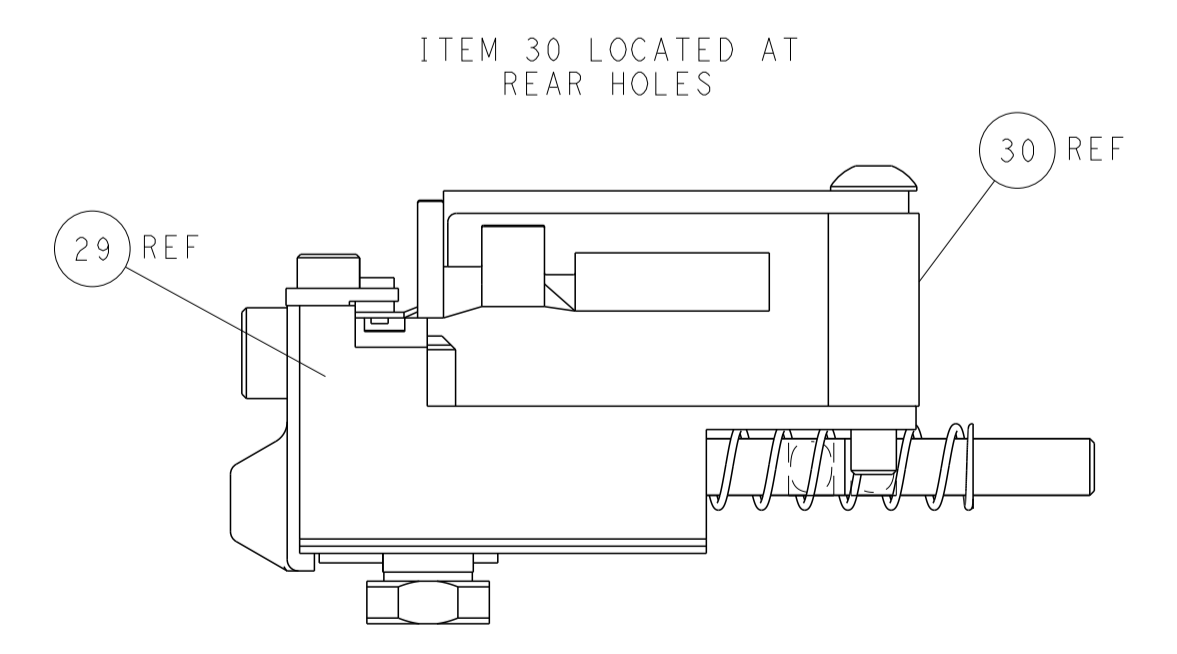
SHEAR DEPRESSOR DETAIL



TERMINAL SUPPORT LOCATION



RAM SET-UP



FEED TRACK POSITION GUIDE BY INSULATION BARREL

PACIFIC VERSION
 Shown on sheets 3 of 4 & 4 of 4
 (Atlantic version shown on sheets 1 of 4 & 2 of 4)

| | | | |
|--|---|---|---|
| <small>THIS DRAWING IS UNPUBLISHED. RELEASED FOR PUBLICATION. IT IS THE PROPERTY OF TYCO ELECTRONICS CORPORATION. IT IS TO BE USED ONLY FOR THE PURPOSES AND IN THE MANNER SPECIFIED BY THE DRAWING. IT IS NOT TO BE REPRODUCED OR TRANSMITTED IN ANY FORM OR BY ANY MEANS, ELECTRONIC OR MECHANICAL, INCLUDING PHOTOCOPYING, RECORDING, OR BY ANY INFORMATION STORAGE AND RETRIEVAL SYSTEM, WITHOUT THE WRITTEN PERMISSION OF TYCO ELECTRONICS CORPORATION.</small> | | DWN R. KNEPPER 03MAY2012 CHK T. ELBIN 03MAY2012 APVD M. CLIFFORD 03MAY2012 | NAME Ocean Side Feed Applicator |
| DIMENSIONS: mm | TOLERANCES UNLESS OTHERWISE SPECIFIED: 0 PLC ± 1 PLC ± 2 PLC ± 3 PLC ± 4 PLC ± ANGLES ± FINISH | PRODUCT SPEC APPLICATION SPEC WEIGHT SCALE 1:2 | SIZE CAGE CODE DRAWING NO A1 00779 ©=2151625 SHEET 4 OF 4 REV D |
| MATERIAL: | | RESTRICTED TO: | |