

Table with 4 columns: PART NUMBER, REVISION, DESCRIPTION, FEED TYPE. Contains parts 2151139-1 to 7-2151139-7.

ATLANTIC VERSION TERMINATOR INTERFACE ADAPTER

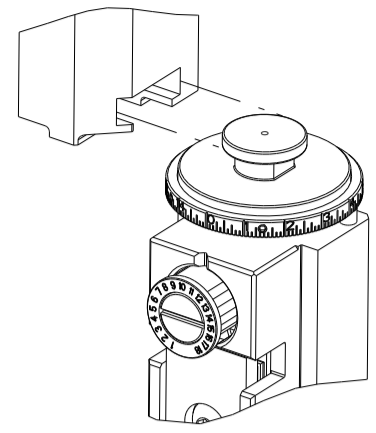


Table with 4 columns: REVISIONS, P, LTM, DESCRIPTION, DATE, DWN, APVD. Lists revisions E, F, and F1.

Table for APPLICATOR DATA with columns CRIMP, SIZE, TYPE. Values include WIRE 2.03 mm [0.080], INSUL 4.06 mm [1.60].

Table for TERMINAL DATA: TE TERMINAL, TE CRIMP SPECIFICATION. Includes wire strip length and terminal insulation diameter range.

Table for TERMINALS APPLIED with columns TE TERMINAL, TE SEAL, TE SEAL. Lists various terminal part numbers.

Table for SEAL INSULATION DIAMETER RANGE with a value of 1.2-2.1mm.

Table for WIRE SIZE, CRIMP HEIGHT mm [INCH], and CRIMP HEIGHT REFERENCE SETTING.

- Notes 1-8: 1. RECOMMENDED SPARE PARTS. 2. REFER TO SUPPLIED INSTRUCTION SHEET FOR CLEANING, LUBRICATION AND STORAGE OF APPLICATOR. 3. APPLY PART NUMBER 1-23419-5 LOCTITE TO THREADS OF ITEMS 180. 4. CRIMP HEIGHT REFERENCE SETTING WAS THE SETTING USED WHEN THE APPLICATOR WAS QUALIFIED AT THE FACTORY. 5. APPLY TORQ-SEAL IN ALLEN SOCKET TO FILL HOLE AFTER FLAT HD HAS BEEN ADJUSTED TO CORRECT HEIGHT AT QUALIFICATION. 6. TERMINAL LUBRICANT IS RECOMMENDED. 7. UNLESS SPECIFIED OTHERWISE TORQUE VALUES SHALL BE USED PER DOCUMENT, 101-35000. 8. THIS CRIMP PARAMETER IS PROVIDED TO MEET A CUSTOM AND UNIQUE CUSTOMER REQUIREMENT.

*WARNING ON INSTALLATION, SET WIRE DISC TO CRIMP HEIGHT REFERENCE SETTING FOR LARGEST WIRE SIZE. CRIMP HEIGHT REFERENCE SETTINGS GREATER THAN THE VALUE SHOWN MAY CAUSE DAMAGE TO THE CRIMP TOOLING. REFER TO THE INSTRUCTION SHEET FOR PROPER SETUP AND ADJUSTMENTS.

Table for TERMINAL DATA: TE TERMINAL, TE CRIMP SPECIFICATION (duplicate of main table).

Table for TERMINALS APPLIED (duplicate of main table).

Table for SEAL INSULATION DIAMETER RANGE (duplicate of main table).

Table for TERMINAL DATA: TE TERMINAL, TE CRIMP SPECIFICATION (duplicate).

Table for TERMINALS APPLIED (duplicate).

Table for SEAL INSULATION DIAMETER RANGE (duplicate).

Table for WIRE SIZE, CRIMP HEIGHT mm [INCH], and CRIMP HEIGHT REFERENCE SETTING (duplicate).

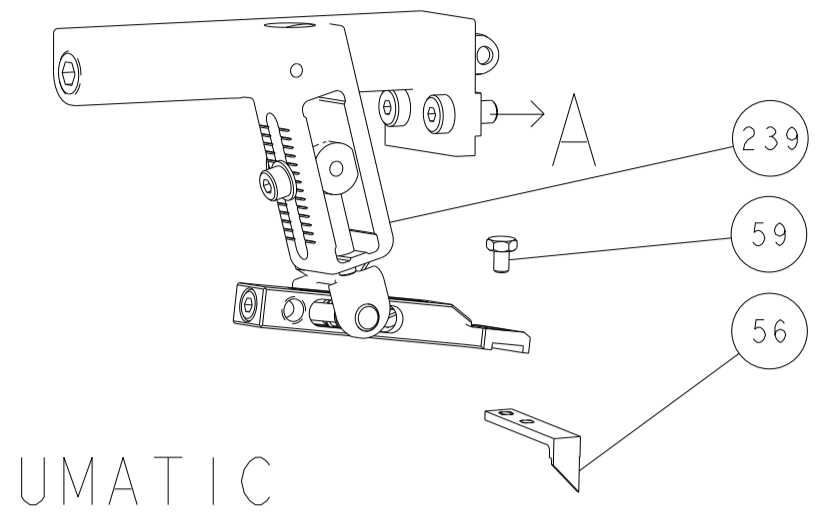
ATLANTIC VERSION Shown on sheets 1 of 4 & 2 of 4 (Pacific version shown on sheets 3 of 4 & 4 of 4)

Main assembly table with columns for part numbers, descriptions, and item numbers. Includes parts like RAM ASSEMBLY, FEED CAM, CRIMPER, etc.

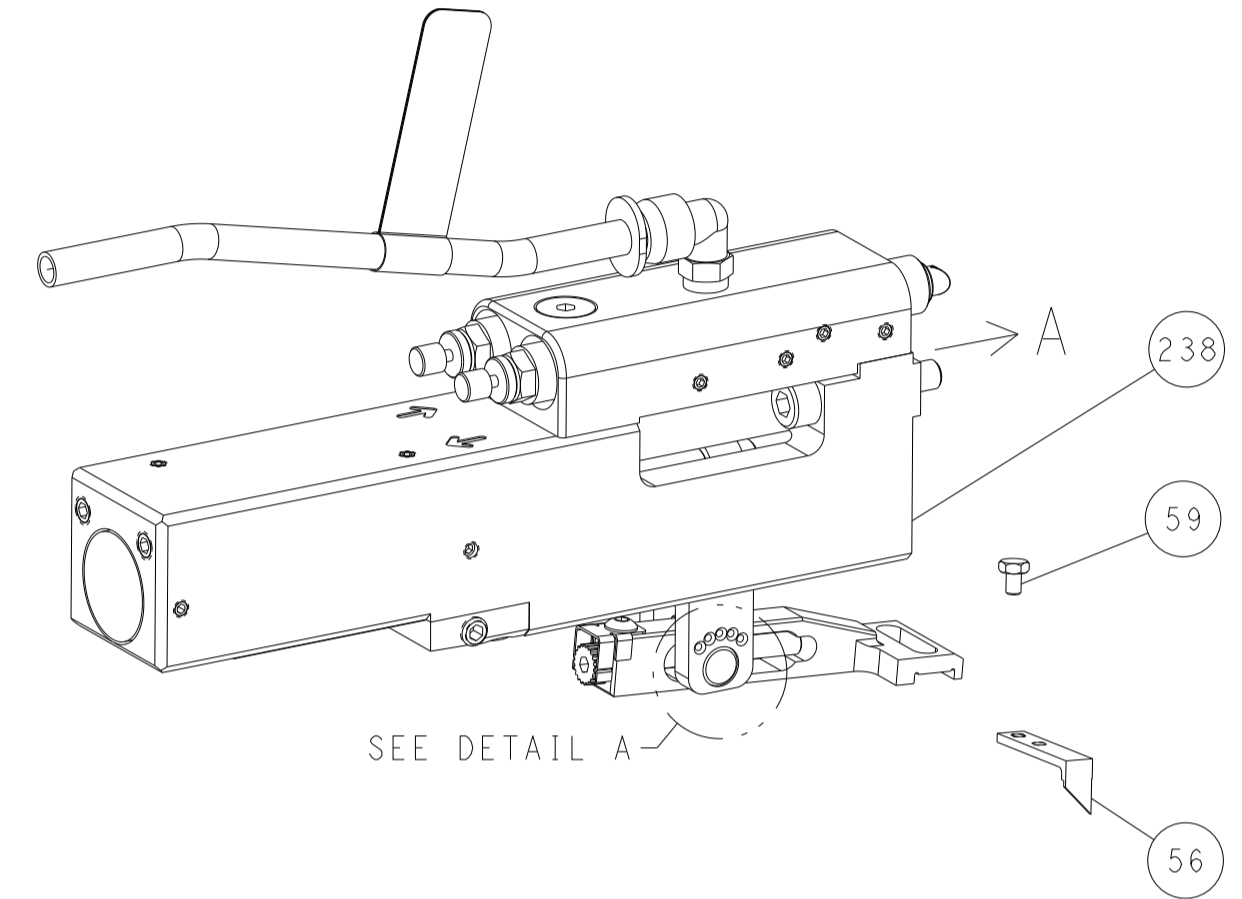
Product information section including dimensions (mm), tolerances, material, weight, and drawing details. Includes the STE logo and product name 'Ocean Side Feed Applicator'.

LOC		DIST		REVISIONS		
A		66		REV	DATE	BY
-				1	SEE SHEET 1	-
-				2		-
-				3		-
-				4		-

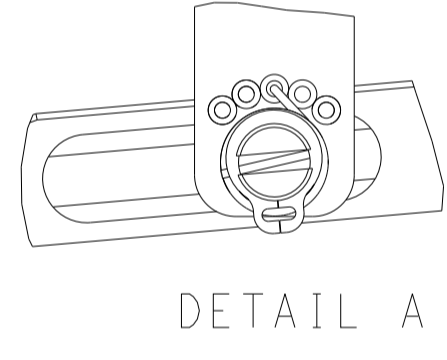
FEED TYPE MECHANICAL



PNEUMATIC

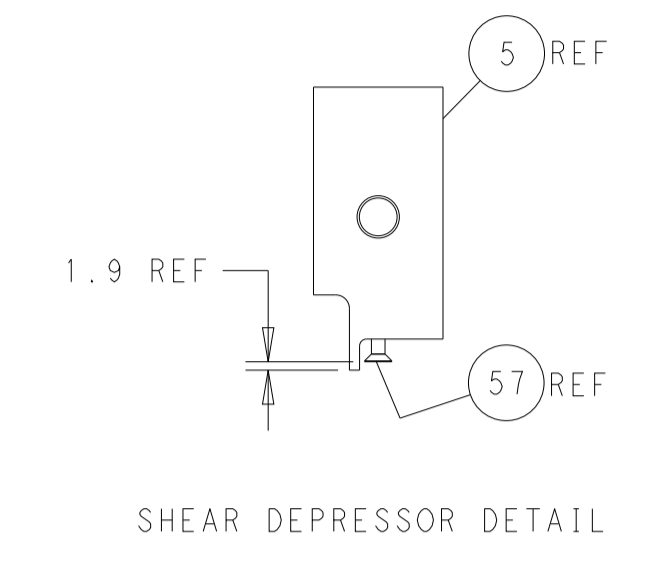
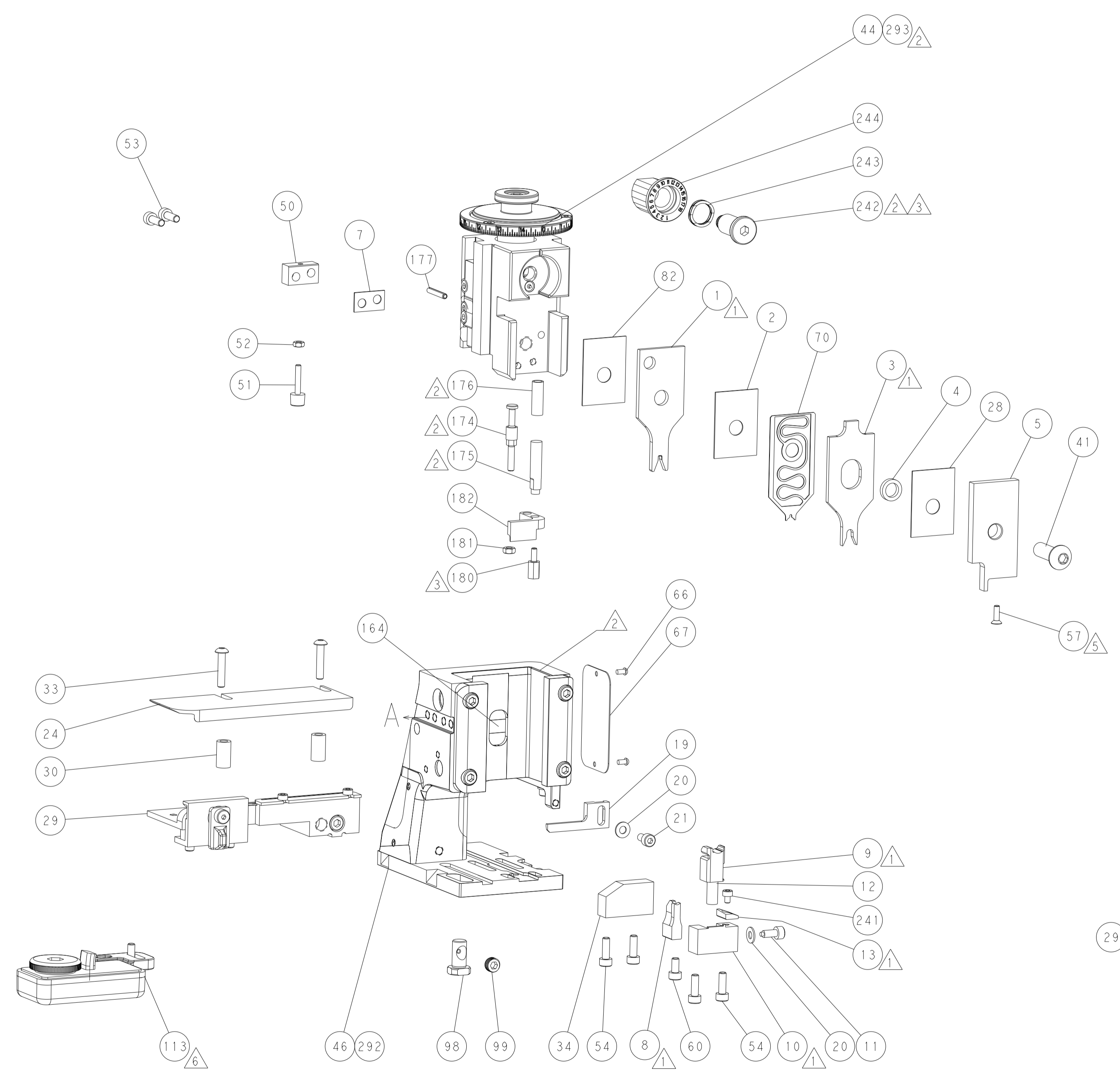
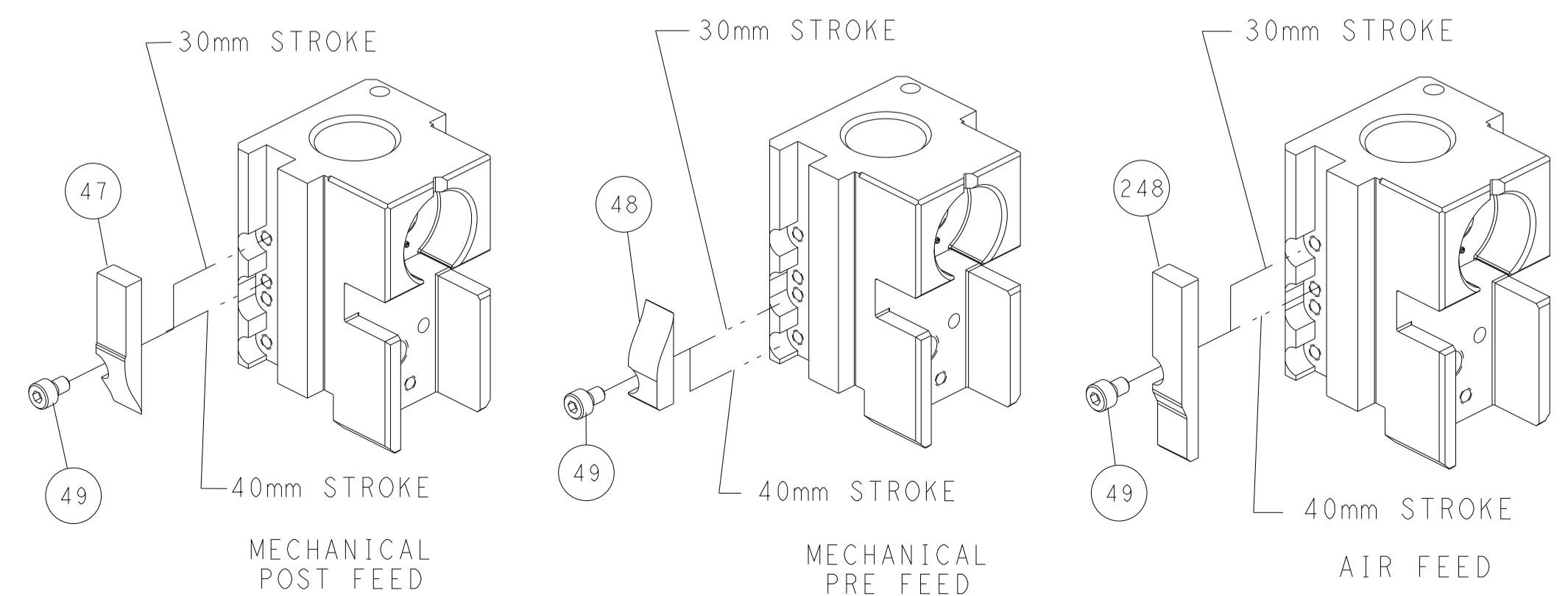


FEED SPRING SETTING POSITION (SHOWN FROM REAR SIDE)

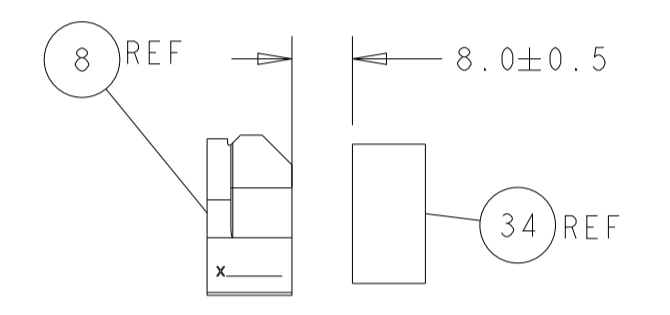


DETAIL A

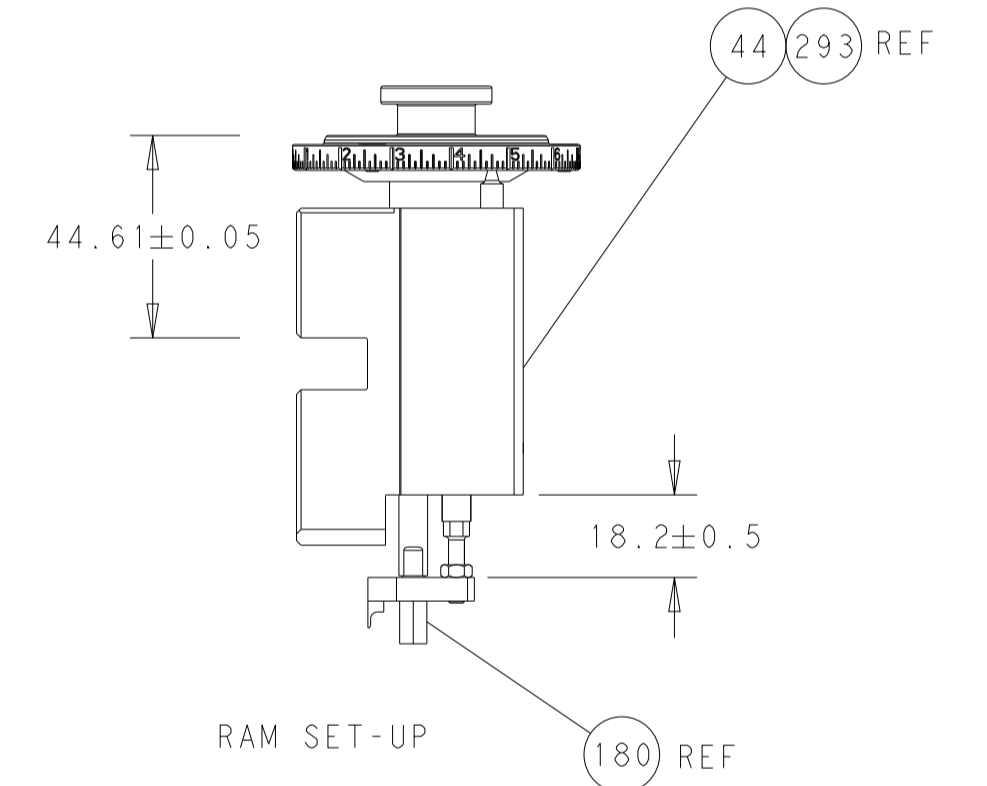
CAM POSITIONS



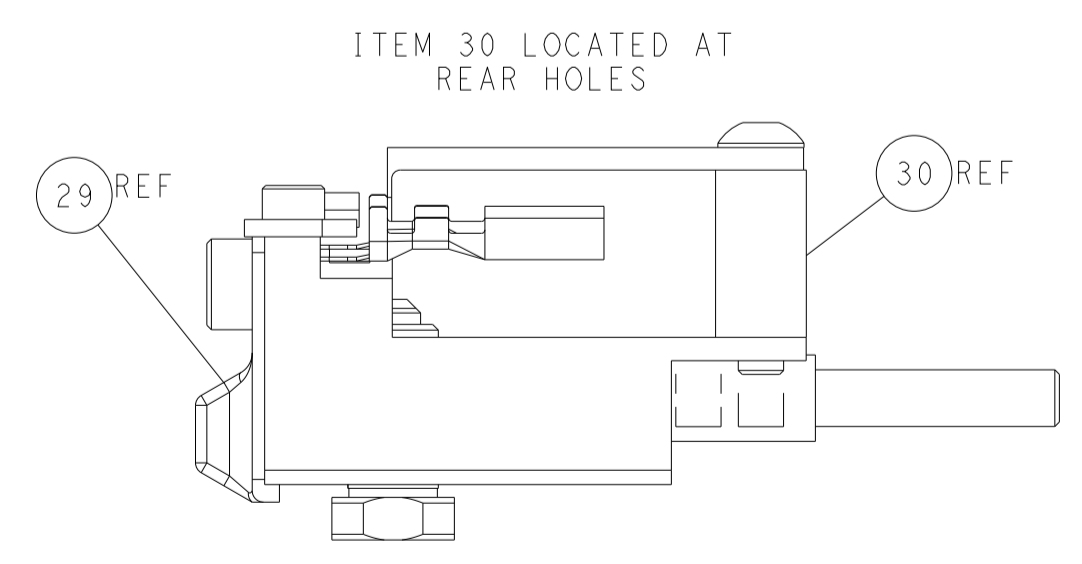
SHEAR DEPRESSOR DETAIL



TERMINAL SUPPORT LOCATION



RAM SET-UP



FEED TRACK POSITION GUIDE BY INSULATION BARREL

ATLANTIC VERSION
 Shown on sheets 1 of 4 & 2 of 4
 (Pacific version shown on sheets 3 of 4 & 4 of 4)

<small>THIS DRAWING IS UNPUBLISHED. BY TYCO ELECTRONICS CORPORATION. ALL RIGHTS RESERVED.</small> DIMENSIONS: mm TOLERANCES UNLESS OTHERWISE SPECIFIED: 0 PLC ± 1 PLC ± 2 PLC ± 3 PLC ± 4 PLC ± ANGLES ± FINISH ±		DWN H. HUANG 13OCT2011 CHK S. XI 13OCT2011 APVD J. CRUZ 13OCT2011 PRODUCT SPEC APPLICATION SPEC WEIGHT SCALE 1:2 SHEET 2 of 4 REV F1	NAME Ocean Side Feed Applicator SIZE CAGE CODE DRAWING NO. A1 00779 C=2151139 RESTRICTED TO Customer Accessible Production Drawing	TE Connectivity Harrisburg, PA 17105-3608
--	--	--	---	--

PART NUMBER	REVISION	DESCRIPTION	FEED TYPE
2-2151139-1	F	FINE CRIMP HEIGHT ADJUST	MECHANICAL
2-2151139-2	F	FINE CRIMP HEIGHT ADJUST	PNEUMATIC
7-2151139-7	F	CRIMP TOOLING KIT	-

PACIFIC VERSION TERMINATOR
 INTERFACE ADAPTER



APPLICATOR DATA		
CRIMP	SIZE	TYPE
WIRE	2.03 mm [.080]	F
INSUL	4.06 mm [.160]	O
APPLICATOR INSTRUCTIONS 408-35042		

***WARNING**
 ON INSTALLATION, SET WIRE DISC TO CRIMP HEIGHT REFERENCE SETTING FOR LARGEST WIRE SIZE. CRIMP HEIGHT REFERENCE SETTINGS GREATER THAN THE VALUE SHOWN MAY CAUSE DAMAGE TO THE CRIMP TOOLING, REFER TO THE INSTRUCTION SHEET FOR PROPER SETUP AND ADJUSTMENTS.

TERMINAL DATA: TE TERMINAL		TE CRIMP SPECIFICATION	
TERMINAL NAME: DIA 1.5mm PIN or SOCKET CONTACT, SINGLE WIRE			
WIRE STRIP LENGTH	TERMINAL INSULATION DIAMETER RANGE		
4.20-4.80 mm [1.65-.189 IN]	∅ 3.4mm MAX		
TERMINAL APPLICATION SPECIFICATION	(A)114-18040	-	-
	(B)114-18020	-	-
TERMINALS APPLIED			
TE TERMINAL	TE TERMINAL	TE SEAL	TE SEAL
(A) 929989-1	(B) 929974-9		(A) 828904-1
(A) 929989-4	(B) 1-929974-4		(A) 828904-2
(A) 929989-7	(A) 1-1418497-0		(A) 828904-3
(A) 929989-8	(B) 929967-1		(B) 828920-1
(A) 1-929989-0	(B) 929967-7		(B) 828920-2
(B) 929974-1	(B) 929967-8		
(B) 929974-4	(B) 1-929967-0		
(B) 929974-7	(B) 1-929967-4		
(B) 929974-8			

SEAL INSULATION DIAMETER RANGE
∅ 1.2-2.1 mm

TERMINAL DATA: TE TERMINAL		TE CRIMP SPECIFICATION	
TERMINAL NAME: DIA 1.5mm PIN or SOCKET CONTACT, SINGLE WIRE			
WIRE STRIP LENGTH	TERMINAL INSULATION DIAMETER RANGE		
4.20-4.80 mm [1.65-.189 IN]	∅ 1.2-2.1mm		
TERMINAL APPLICATION SPECIFICATION	(A)114-18040	-	-
	(B)114-18020	-	-
TERMINALS APPLIED			
TE TERMINAL	TE TERMINAL	TE SEAL	TE SEAL
(A) 1703013-1			(A) 828904-1
(A) 1703013-2			(A) 828904-2
(A) 1703013-4			(A) 828904-3
(A) 1703013-8			(B) 828920-1
(A) 1703049-1			(B) 828920-2

SEAL INSULATION DIAMETER RANGE
∅ 1.2-2.1 mm

WIRE SIZE	CRIMP HEIGHT mm [INCH]	CRIMP HEIGHT REFERENCE SETTING
1.00mm2	1.45 +/- 0.03 [0.057 +/- .001]	3.7
0.75mm2	1.36 +/- 0.03 [0.054 +/- .001]	4.5
0.50mm2	1.27 +/- 0.03 [0.050 +/- .001]	5.5

- RECOMMENDED SPARE PARTS
- REFER TO SUPPLIED INSTRUCTION SHEET FOR CLEANING, LUBRICATION AND STORAGE OF APPLICATOR.
- APPLY PART NUMBER 2-23419-6 LOCTITE TO THREADS OF ITEM 242.
- CRIMP HEIGHT REFERENCE SETTING WAS THE SETTING USED WHEN THE APPLICATOR WAS QUALIFIED AT THE FACTORY. ADJUSTMENT MAY BE NECESSARY WHEN RUNNING APPLICATOR IN THE FIELD.
- APPLY TORQ-SEAL IN ALLEN SOCKET TO FILL HOLE AFTER FLAT HD HAS BEEN ADJUSTED TO CORRECT HEIGHT AT QUALIFICATION. APPLY #1-23419-5 LOC-TITE TO THREADS.
- TERMINAL LUBRICANT IS RECOMMENDED.
- UNLESS SPECIFIED OTHERWISE TORQUE VALUES SHALL BE USED PER DOCUMENT, 101-35000.
- THIS CRIMP PARAMETER IS PROVIDED TO MEET A CUSTOM AND UNIQUE CUSTOMER REQUIREMENT. IT HAS BEEN EVALUATED AND IS CONDITIONALLY SPECIFIED BY TE CONNECTIVITY. THIS CUSTOMIZED CRIMP PARAMETER IS NOT LISTED AS AN APPROVED APPLICATION WITHIN A TE CONNECTIVITY APPLICATION SPECIFICATION. **TE CONNECTIVITY EXPRESSLY DISCLAIMS ANY AND ALL WARRANTIES THAT THE PRODUCT WILL PERFORM SIMILARLY TO VALIDATED AND APPROVED APPLICATIONS, AS STATED WITHIN TE CONNECTIVITY APPLICATION SPECIFICATIONS, INCLUDING BUT NOT LIMITED TO IMPLIED WARRANTIES OF MERCHANTABILITY OR FITNESS FOR PARTICULAR PURPOSE.** AS SUCH, IT IS HIGHLY RECOMMENDED THAT THE CUSTOMER PERFORM FURTHER DETAILED EVALUATION TO ASSESS PRODUCT PERFORMANCE IN THE SPECIFIC APPLICATION.

TERMINAL DATA: TE TERMINAL		TE CRIMP SPECIFICATION	
TERMINAL NAME: DIA 1.5mm PIN or SOCKET CONTACT, SINGLE WIRE			
WIRE STRIP LENGTH	TERMINAL INSULATION DIAMETER RANGE		
4.20-4.80mm [1.65-.189 IN]	∅ 3.4mm MAX		
TERMINAL APPLICATION SPECIFICATION	(B)114-18020	-	-
		-	-
TERMINALS APPLIED			
TE TERMINAL	TE TERMINAL	TE SEAL	TE SEAL
(B) 929974-1	(B) 929974-8		(B) 828920-1
(B) 929974-4	(B) 929974-9		(B) 828920-2
(B) 929974-7	(B) 1-929974-4		

SEAL INSULATION DIAMETER RANGE
∅ 1.2-2.1mm

WIRE SIZE	CRIMP HEIGHT mm [INCH]	CRIMP HEIGHT REFERENCE SETTING
18 AWG	1.29 +/- 0.05 [0.051 +/- .002]	5.3

LOC	DIST	REVISIONS					
A	66	P	LTN	DESCRIPTION	DATE	DWN	APVD
		-		SEE SHEET 1			

-	1	1	2119082-9	CAM, SNAIL, INSULATION ADJUSTMENT	244
-	1	1	2079764-1	WASHER, WAVE SPRING, CREST-TO-CREST	243
-	1	1	2119083-1	RETAINER, INSULATION DIAL	242
-	1	1	7-18023-7	SCR, SKT HD CAP M3 X 4.0	241
-	-	1	2119580-1	MECHANICAL FEED ASSEMBLY	239
-	1	-	2844940-1	AIR FEED MODULE	238
-	REF	REF	994970-2	COUNTER, MAGNETIC	164
-	1	-	2119641-2	FEED CAM, AIR FEED	151
-	1	1	2168083-8	SCR, SKT HD CAP, RoHS, M4 X 16	144
-	4	4	2168083-9	SCR, SKT HD CAP, RoHS, M4 X 20	143
-	-	1	2119653-2	FEED CAM, POST FEED	142
-	1	1	1-1803583-0	APPLICATOR BASIC ASSEMBLY, SF	141
-	1	1	1803516-1	RAM ASSEMBLY, SF PACIFIC	140
-	1	1	2119955-1	ASSY, LUBRICATOR, SIDE FEED	113
-	1	1	2844908-1	SCREW, LOCKING	99
-	1	1	2844907-1	POST, LOCKING	98
-	1	1	455888-5	SPACER, CRIMPER	82
-	1	1	1803607-3	DOCUMENTATION PACKAGE	71
-	1	1	1803948-6	DEPRESSOR, WIRE, SPECIAL	70
-	1	1	2119740-1	TAG, IDENTIFICATION	67
-	2	2	2168078-1	SCREW, DRIVE, RH, RoHS, 2 x .188	66
-	1	1	5-18022-5	SCR, HEX HD CAP, M4 X 6.0	59
-	1	1	985575-3	SCR, FLT SKT HD CAP M3 X 10.0	57
-	1	1	1338685-1	PAWL, FEED	56
-	2	2	2168083-3	SCR, SKT HD CAP, RoHS, M4 X 12.0	53
-	1	1	5018030-1	NUT, HEX, REG, RoHS, M3	52
-	1	1	811242-5	BUMPER, HOLD DOWN	51
-	1	1	690753-2	SPACER, TONKER	50
-	1	2	18023-9	SCR, SKT HD CAP M4 X 6.0	49
-	-	1	2119652-1	FEED CAM, PRE FEED	48
-	1	1	1803602-1	SCR, BHSC, RoHS (M8 X 25)	41
-	1	1	1-1752356-7	SUPPORT, TERMINAL	34
-	2	2	2079383-5	SCR, BHSC, RoHS (M4 X 20)	33
-	2	2	2-2844962-8	SPACER, CYLINDRICAL, STRIP GUIDE	30
-	1	1	2844992-1	ASSEMBLY, STRIP GUIDE	29
-	1	1	455888-5	SPACER, CRIMPER	28
-	1	1	1320928-6	STRIP GUIDE	24
-	1	1	2168083-2	SCR, SKT HD CAP, RoHS, M4 X 8.0	21
-	2	2	1-18028-2	WASHER, FLAT, REG M4	20
-	1	1	2119533-1	STRIPPER, SIDE FEED	19
-	1	1	2119806-1	INSERT, SHEAR	13
-	1	1	3-22280-3	SPRING, COMPRESSION	12
-	1	1	1-356885-4	STOP, SHEAR	11
-	1	1	2119805-1	SHEAR HOLDER, FRONT	10
-	1	1	318707-1	FLOATING SHEAR, FRONT	9
-	1	1	1338693-1	ANVIL, COMBINATION .080	8
-	1	1	3-240641-8	SPACER	7
-	1	1	2119781-1	DEPRESSOR, SHEAR	5
-	1	1	3-238011-3	BLOCK, CRIMPER SPACER	4
-	1	1	2-1803019-4	CRIMPER, INSULATION O	3
-	1	1	455888-6	SPACER, CRIMPER	2
-	1	1	1633730-5	CRIMPER, WIRE	1

PACIFIC VERSION
 Shown on sheets 3 of 4 & 4 of 4
 (Atlantic version shown on sheets 1 of 4 & 2 of 4)

DIMENSIONS:		TOLERANCES UNLESS OTHERWISE SPECIFIED:		MATERIAL:	
mm	0 PLC ±	1 PLC ±	2 PLC ±	3 PLC ±	4 PLC ±
	ANGLES ±	FINISH			

ITEM NO	PART NO	DESCRIPTION	
-77	-22	-21	

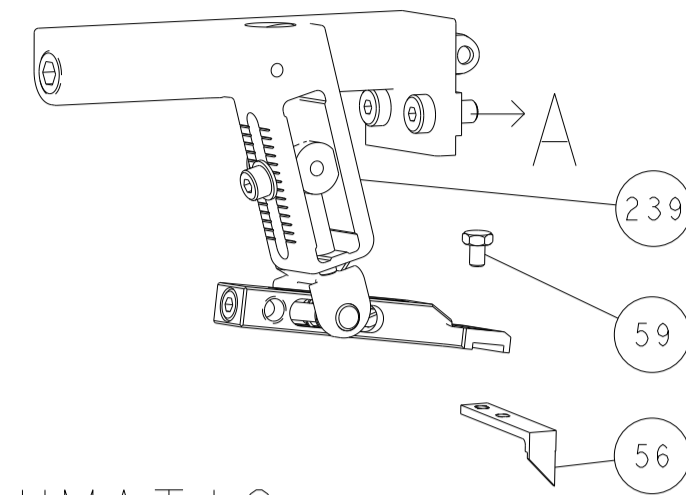
CHK	DATE	BY
H. HUANG	13OCT2011	
S. XI	13OCT2011	
I. CRUZ	13OCT2011	

NAME	SIZE	CAGE CODE	DRAWING NO	RESTRICTED TO
TE Connectivity Harrisburg, PA 17105-3608	A1	00779	2151139	

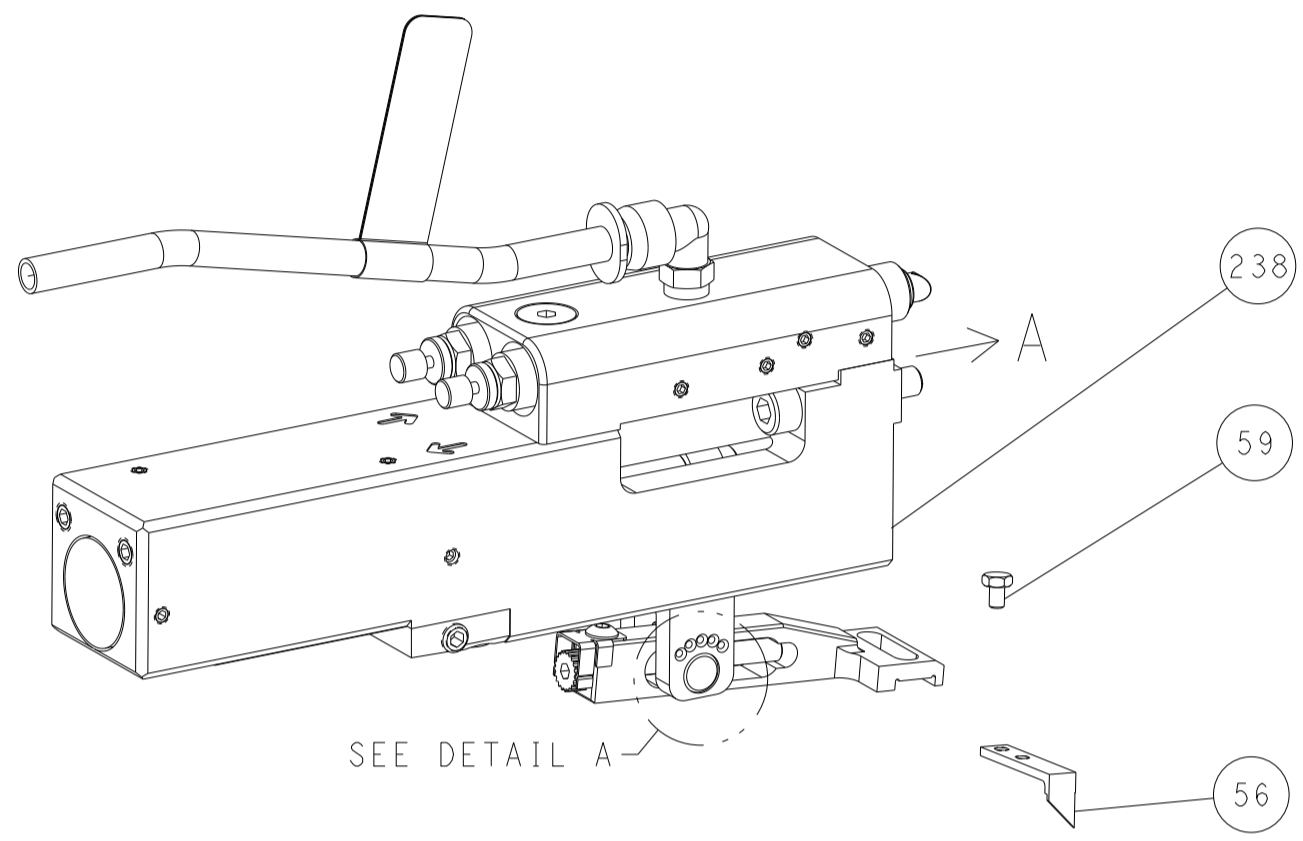
Customer Accessible Production Drawing SCALE 1:2 SHEET 3 OF 4 REV F1

LOC	DIST	REVISIONS					
		P	LTN	DESCRIPTION	DATE	DWN	APVD
A	66	-	-	SEE SHEET 1	-	-	-

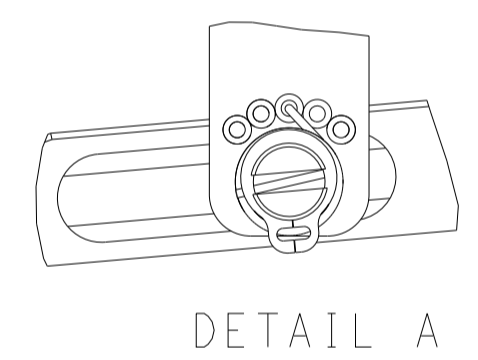
FEED TYPE MECHANICAL



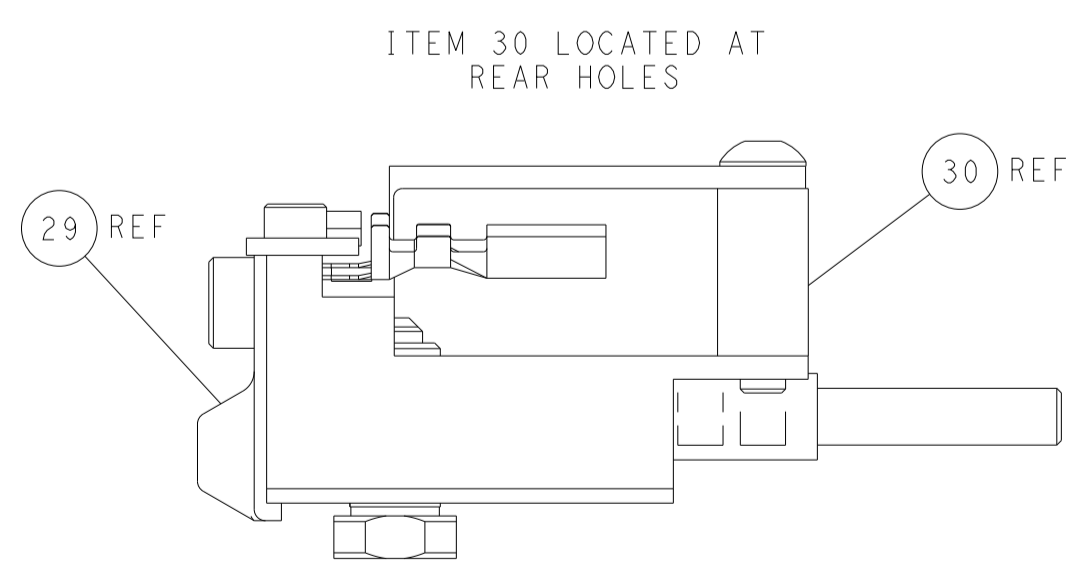
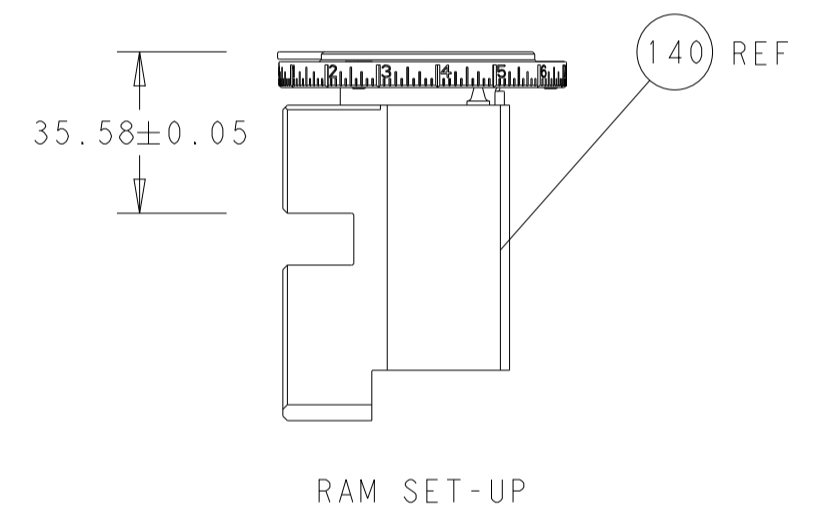
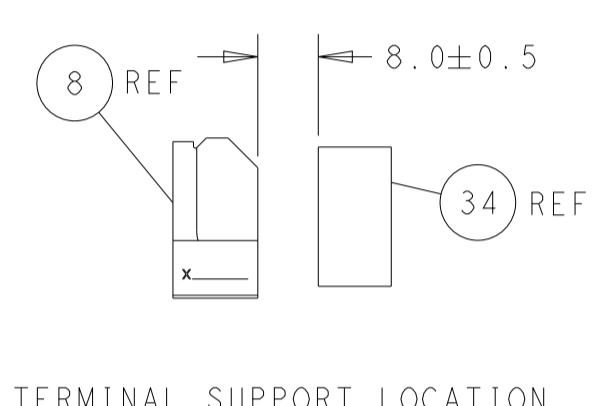
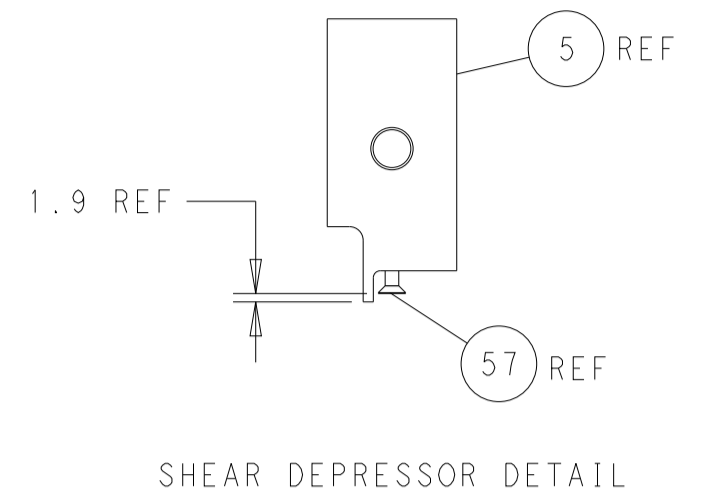
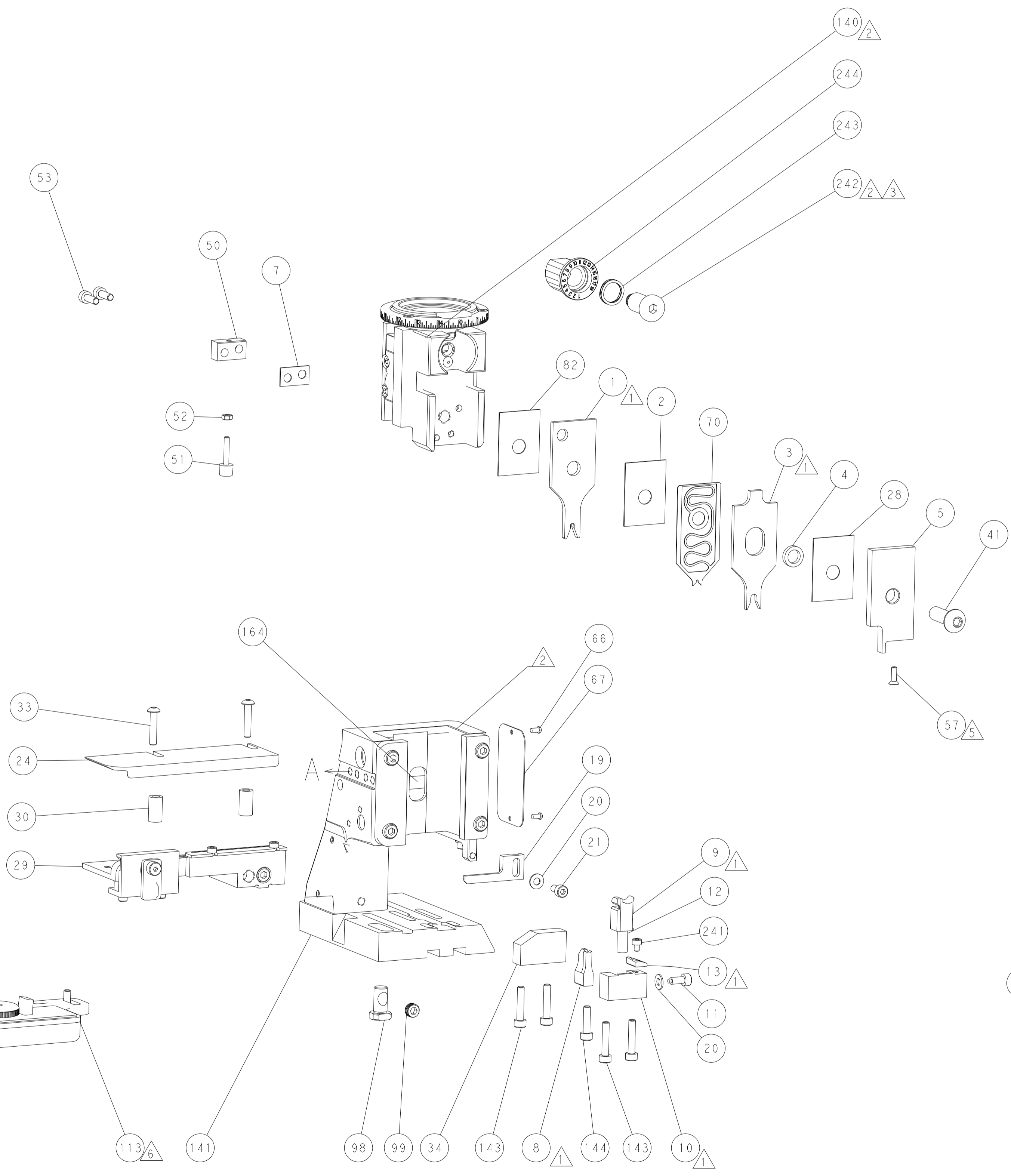
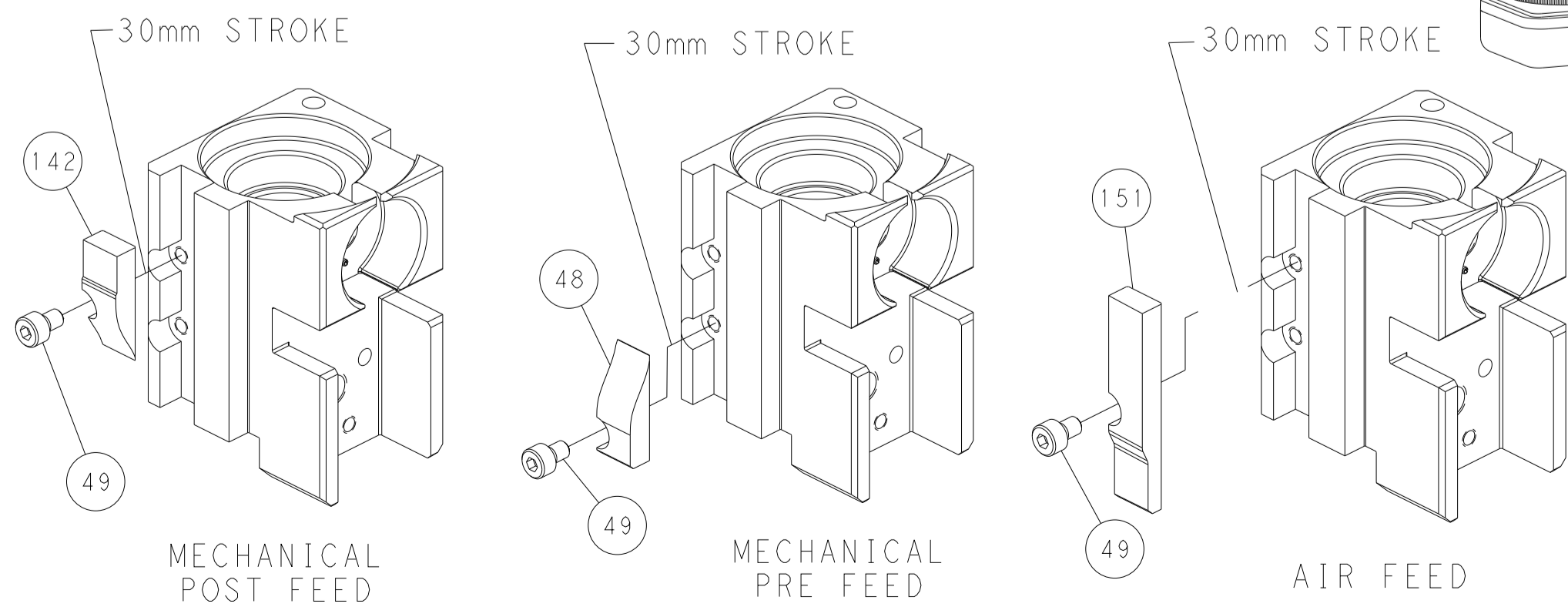
PNEUMATIC



FEED SPRING SETTING POSITION (SHOWN FROM REAR SIDE)



CAM POSITIONS



PACIFIC VERSION
 Shown on sheets 3 of 4 & 4 of 4
 (Atlantic version shown on sheets 1 of 4 & 2 of 4)

<small>THIS DRAWING IS UNPUBLISHED. RELEASED FOR PUBLICATION. ALL RIGHTS RESERVED. © 2011 BY TYCO ELECTRONICS CORPORATION. THIS DRAWING IS CONTROLLED DOCUMENT. ANY REPRODUCTION OR DISTRIBUTION WITHOUT THE WRITTEN PERMISSION OF TYCO ELECTRONICS CORPORATION IS STRICTLY PROHIBITED.</small>		DWN: H. HUANG 13OCT2011 CHK: S. XI 13OCT2011 APVD: J. CRUZ 13OCT2011	NAME: TE Connectivity Harrisburg, PA 17105-3608
DIMENSIONS: mm TOLERANCES UNLESS OTHERWISE SPECIFIED: 0 PLC ± 1 PLC ± 2 PLC ± 3 PLC ± 4 PLC ± ANGLES FINISH ±		PRODUCT SPEC APPLICATION SPEC WEIGHT SCALE: 1:2	SIZE: A1 CAGE CODE: 00779 DRAWING NO: C=2151139 SHEET 4 OF 4 REV F1