

PART NUMBER	REVISION	DESCRIPTION	FEED TYPE
2150897-1	D	FINE CRIMP HEIGHT ADJUST	MECHANICAL
2150897-2	E	FINE CRIMP HEIGHT ADJUST	PNEUMATIC
7-2150897-1	D	MECHANICAL AND CRIMP TOOLING KIT	MECHANICAL
7-2150897-2	E	PNEUMATIC AND CRIMP TOOLING KIT	PNEUMATIC
7-2150897-7	A	CRIMP TOOLING KIT	-

ATLANTIC VERSION TERMINATOR INTERFACE ADAPTER



APPLICATOR DATA		
CRIMP	SIZE	TYPE
WIRE	5.33 mm [.210]	F
INSUL	-	-
APPL INSTRUCTIONS 408-35043		

TERMINAL DATA: TE TERMINAL		TE CRIMP SPECIFICATION	
TERMINAL NAME: TERMINAL SPRING SPADE			
WIRE STRIP LENGTH		INSULATION DIAMETER RANGE	
6.60-7.36 mm [.260-.290 IN]		∅	-
TERMINAL APPLICATION SPECIFICATION	114-2084		
TERMINALS APPLIED			
TE TERMINAL	TE TERMINAL	TE TERMINAL	TE TERMINAL
63610-2			

WIRE SIZE	CRIMP HEIGHT mm [INCH]	CRIMP HEIGHT REFERENCE SETTING
10 AWG OR 5.00mm ²	3.43 +/- 0.05 [.135 +/- .002]	3.2
12 AWG OR 3.00mm ²	3.12 +/- 0.05 [.123 +/- .002]	7.2
14 AWG OR 2.00mm ²	2.92 +/- 0.05 [.115 +/- .002]	9.2

- 1 RECOMMENDED SPARE PARTS
- 2 REFER TO SUPPLIED INSTRUCTION SHEET FOR CLEANING, LUBRICATION AND STORAGE OF APPLICATOR.
- 3 CRIMP HEIGHT REFERENCE SETTING WAS THE SETTING USED WHEN THE APPLICATOR WAS QUALIFIED AT THE FACTORY. ADJUSTMENT MAY BE NECESSARY WHEN RUNNING APPLICATOR IN THE FIELD.
- 4. UNLESS SPECIFIED OTHERWISE TORQUE VALUES SHALL BE USED PER DOCUMENT, 101-35000.

***WARNING**
ON INSTALLATION, SET WIRE DISC TO CRIMP HEIGHT REFERENCE SETTING FOR LARGEST WIRE SIZE. CRIMP HEIGHT REFERENCE SETTINGS GREATER THAN THE VALUE SHOWN MAY CAUSE DAMAGE TO THE CRIMP TOOLING. REFER TO THE INSTRUCTION SHEET FOR PROPER SETUP AND ADJUSTMENTS.

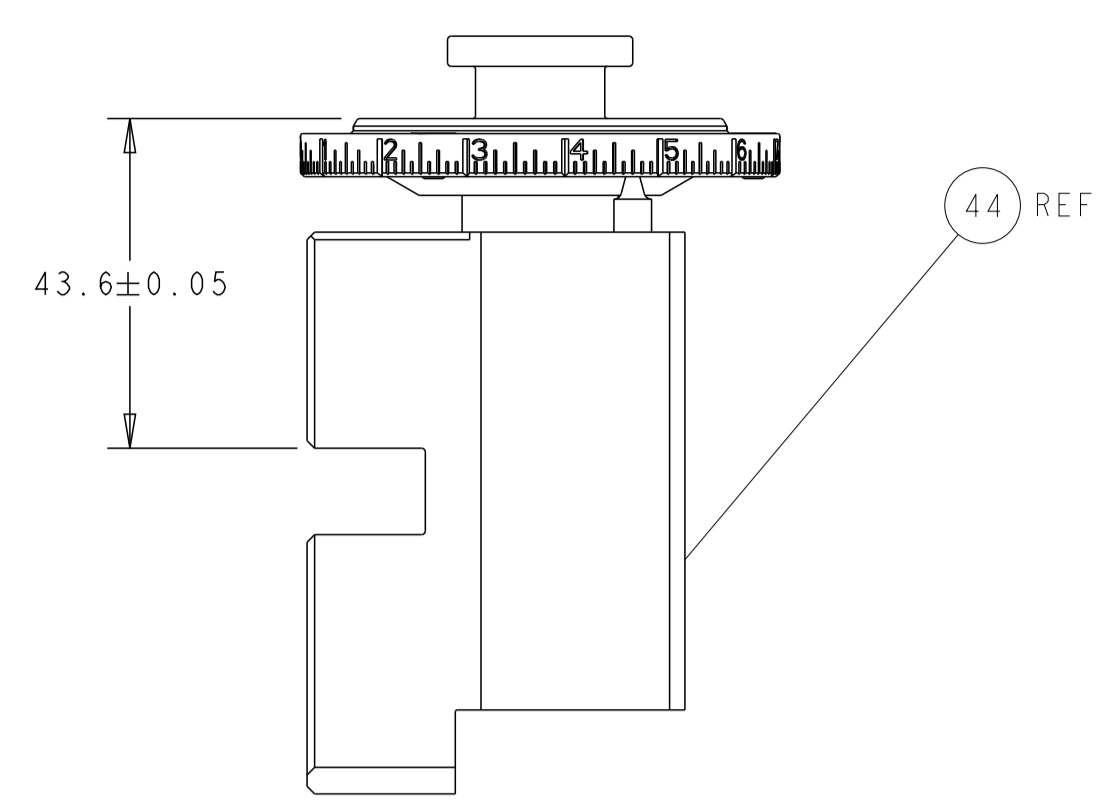
LOC	DIST	REVISIONS					
A	66	P	LTN	DESCRIPTION	DATE	DWN	APVD
		B		ECR-18-006471	03MAY2018	AW	CT
		C		ECR-19-002216	11FEB2019	TB	GB
		D		ECR-19-002619	18FEB2019	TB	CT
		E		ECR-22-143866	29JUN2022	JWC	ROY

-	1	1	1	1	1803203-1	BLOCK, FRONT DEPRESSOR	26	1	
-	1	-	1	-	2119641-1	FEED CAM, AIR FEED	24	8	
-	-	1	-	1	2119580-1	MECHANICAL FEED ASSEMBLY	23	9	
-	1	-	1	-	2844940-3	AIR FEED MODULE	23	8	
-	REF	REF	REF	REF	994970-2	COUNTER, MAGNETIC	16	4	
-	1	1	1	1	455888-4	SPACER, CRIMPER	8	2	
-	1	1	1	1	2119791-9	DEPRESSOR, WIRE	7	3	
-	1	1	1	1	1803607-4	DOCUMENTATION PACKAGE	7	1	
-	2	2	2	2	2-18032-2	SCR, SET, FLT PNT, M3 X 10.0	7	0	
-	1	1	1	1	2119943-1	WASHER, SPACER	6	9	
-	1	1	1	1	2119740-1	TAG, IDENTIFICATION	6	7	
-	2	2	2	2	2168078-1	SCREW, DRIVE, RH, RoHS, 2 x .188	6	6	
-	1	1	1	1	2168083-2	SCR, SKT HD CAP, RoHS, M4 X 8.0	6	0	
-	2	2	2	2	5-18022-5	SCR, HEX HD CAP, M4 X 6.0	5	9	
-	1	1	1	1	2063961-1	FEED FINGER	5	8	
-	4	4	4	4	2168400-4	SHCS, LOW HEAD, RoHS, M4 X 8	5	7	
-	2	2	2	2	2168083-3	SCR, SKT HD CAP, RoHS, M4 X 12.0	5	6	
-	2	2	2	2	5018030-1	NUT, HEX, REG, RoHS, M3	5	4	
-	2	2	2	2	986965-8	NUT, LOCK, HEX, TORQUE (M4)	5	3	
-	1	1	1	1	2063961-1	FEED FINGER	5	1	
-	1	2	1	2	18023-9	SCR, SKT HD CAP M4 X 6.0	4	9	
-	-	1	-	1	2119652-1	FEED CAM, PRE FEED	4	8	
-	-	1	-	1	2119653-1	FEED CAM, POST FEED	4	7	
-	1	1	1	1	2119655-5	APPLICATOR BASIC ASSEMBLY, EF	4	6	
-	1	1	1	1	1803517-1	RAM ASSEMBLY, EF ATLANTIC	4	4	
-	1	1	1	1	1803602-1	SCR, BHSC, RoHS (M8 X 25)	4	1	
-	8	8	8	8	1-18028-2	WASHER, FLAT, REG M4	3	3	
-	2	2	2	2	2168083-8	SCR, SKT HD CAP, RoHS, M4 X 16	3	1	
-	2	2	2	2	2168083-2	SCR, SKT HD CAP, RoHS, M4 X 8.0	2	9	
-	1	1	1	1	240639-1	STRIPPER (MACHINING)	2	7	
-	2	2	2	2	1-2168083-5	SCR, SKT HD CAP, RoHS, M4 X 30	2	5	
-	1	1	1	1	1752371-5	PLATE, STRIP GUIDE	2	4	
-	2	2	2	2	4-22281-1	SPRING, COMPRESSION	2	2	
-	1	1	1	1	1803292-4	DRAG	2	0	
-	1	1	1	1	1901696-4	STRIP GUIDE, REAR	1	9	
-	1	1	1	1	1901695-4	STRIP GUIDE, FRONT	1	8	
-	4	4	4	4	1-2079383-1	SCR, BHSC, RoHS (M6 X 12)	1	7	
-	1	1	1	1	240644-9	PLATE, REAR SHEAR	1	1	
-	2	2	2	2	1-240645-0	SPACER, SHEAR PLATE	1	0	
-	1	1	1	1	240642-1	PLATE, FRONT SHEAR	1	9	
-	1	2	2	1	1	3-1803002-6	ANVIL, COMBINATION, END FEED	1	8
-	1	1	1	1	1-240651-6	BLADE, SLUG	1	7	
-	-	-	-	-	-	-	1	6	
-	1	1	1	1	2-240641-5	SPACER	1	5	
-	-	-	-	-	-	-	1	4	
-	-	-	-	-	-	-	1	3	
-	-	-	-	-	-	-	1	2	
-	1	2	2	1	1	1-456430-8	CRIMPER, WIRE	1	1
-	77	72	71	2	1	PART NO	DESCRIPTION	ITEM NO	

ATLANTIC VERSION
Shown on sheets 1 of 4 & 2 of 4
(Pacific version shown on sheets 3 of 4 & 4 of 4)

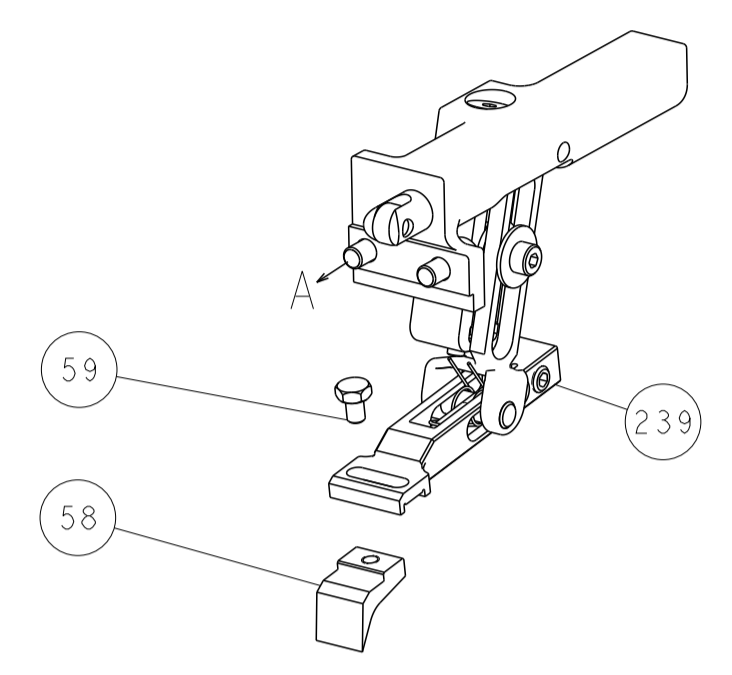
DIMENSIONS:		TOLERANCES UNLESS OTHERWISE SPECIFIED:		MATERIAL:		FINISH:		WEIGHT:		SCALE:		SHEET:		REV:	
mm	0 PLC ±	1 PLC ±	2 PLC ±	3 PLC ±	4 PLC ±	ANGLES	FINISH			A1	00779	2150897	1	4	E

LOC		DIST		REVISIONS			
A	66	P	LTM	DESCRIPTION	DATE	OWN	APVD
		-		SEE SHEET 1			

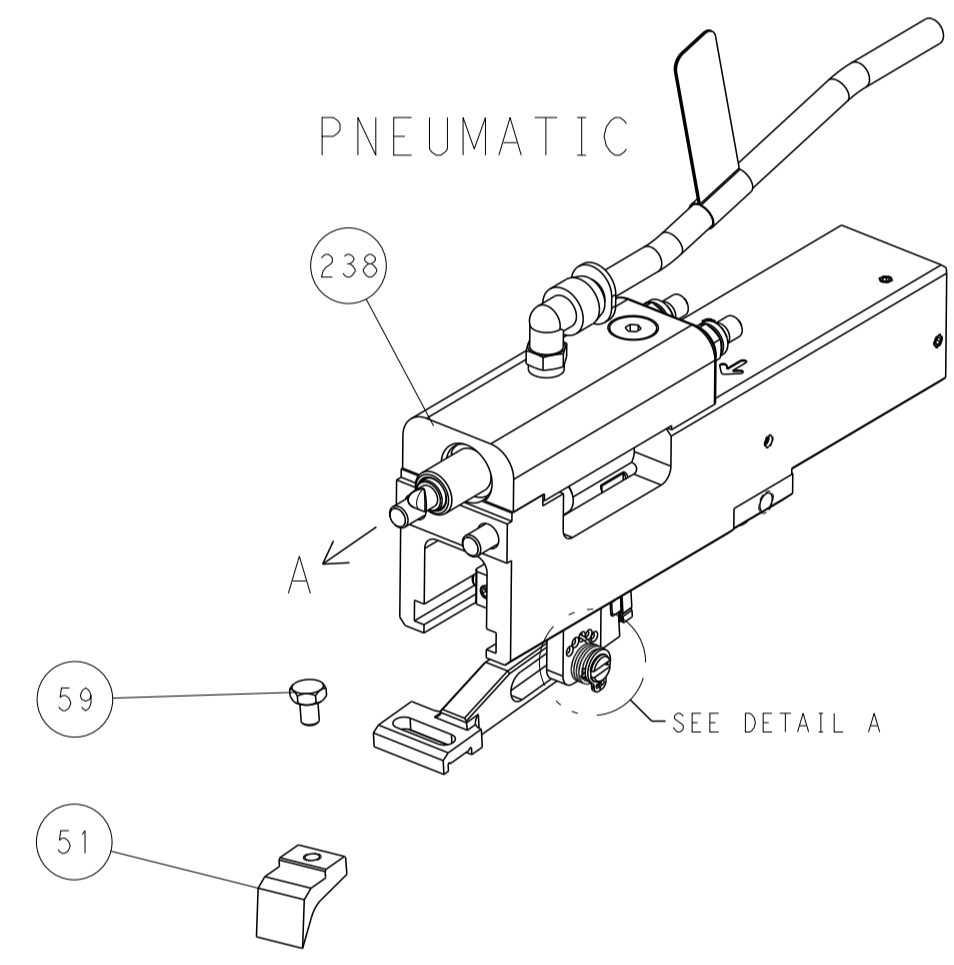


RAM SET-UP

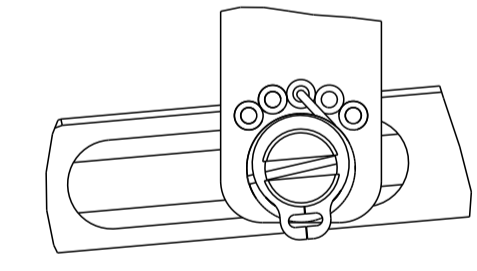
FEED TYPE
MECHANICAL



PNEUMATIC

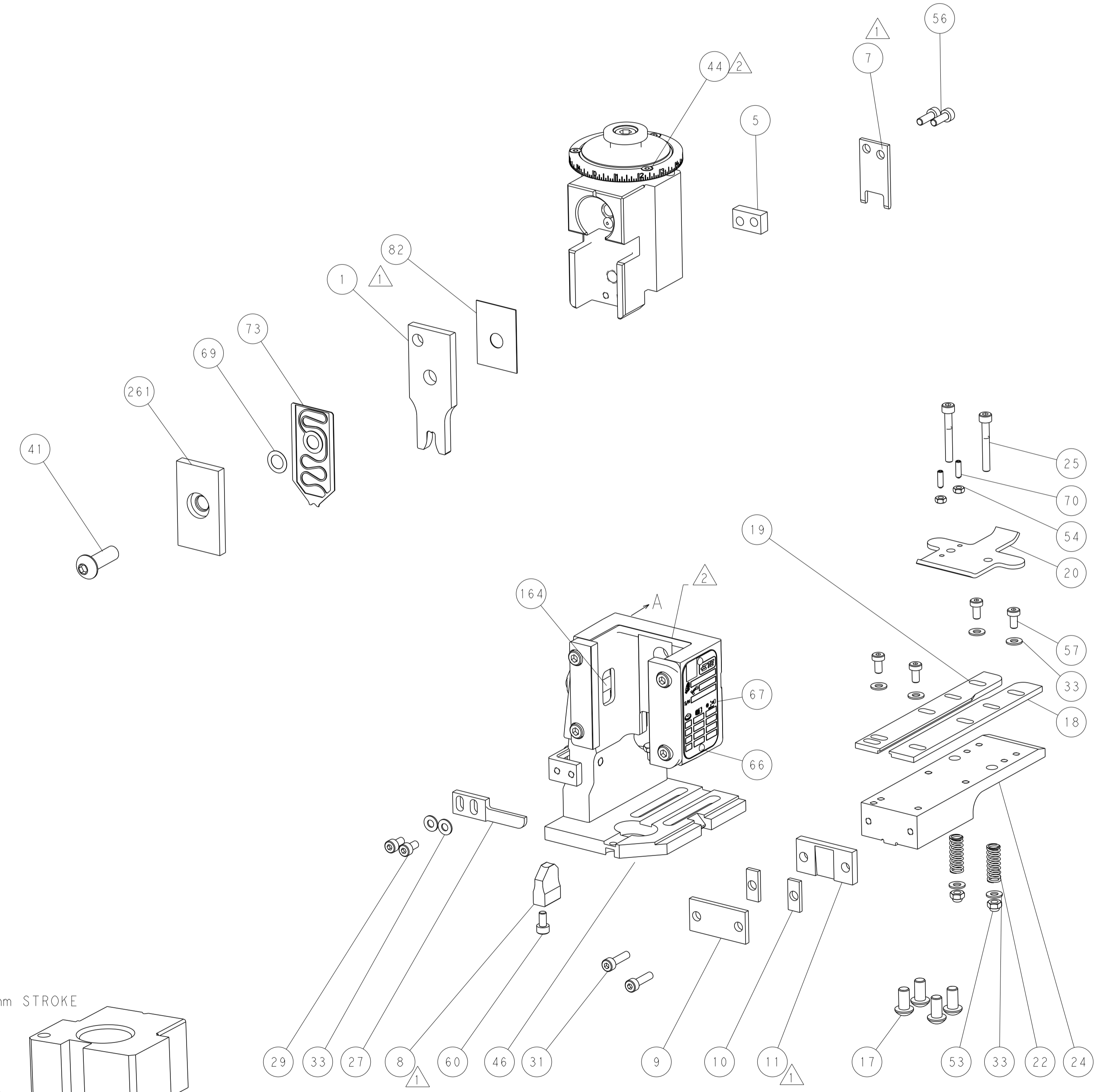
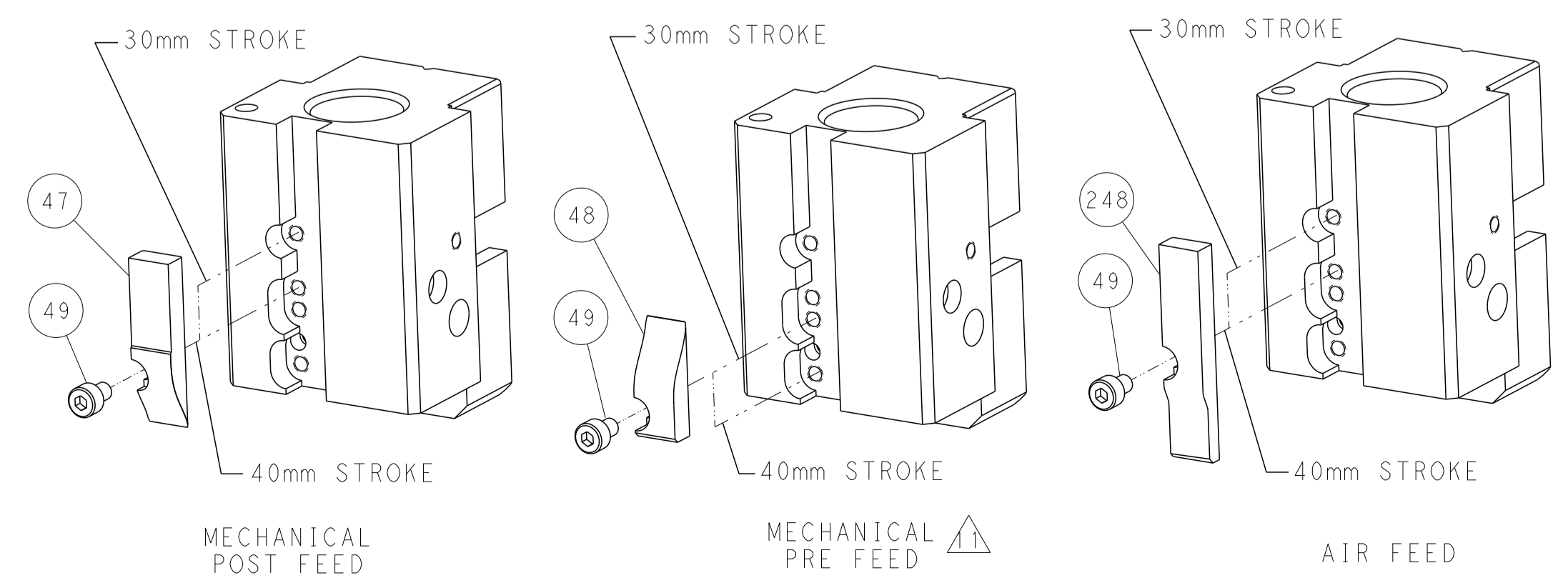


FEED SPRING
SETTING POSITION



DETAIL A

CAM POSITIONS



ATLANTIC VERSION
 Shown on sheets 1 of 4 & 2 of 4
 (Pacific version shown on sheets 3 of 4 & 4 of 4)

DIMENSIONS:		TOLERANCES UNLESS OTHERWISE SPECIFIED:		DWG: K. HUANG 23FEB2018		TE Connectivity	
mm		0 PLC ±		CHK: L. ZHANG 23FEB2018		Harrisburg, PA 17105-3608	
Ø		1 PLC ±		APVD: L. ZHANG 23FEB2018		NAME: Ocean End Feed Applicator	
H		2 PLC ±		PRODUCT SPEC		SIZE: CAGE CODE: DRAWING NO:	
D		3 PLC ±		APPLICATION SPEC		RESTRICTED TO:	
R		4 PLC ±		WEIGHT		A1 00779 C=2150897	
ANGLES		FINISH		Customer Accessible Production Drawing		SCALE: 1:1 SHEET 2 OF 4 REV E	

PART NUMBER	REVISION	DESCRIPTION	FEED TYPE
2-2150897-1	D	FINE CRIMP HEIGHT ADJUST	MECHANICAL
2-2150897-2	E	FINE CRIMP HEIGHT ADJUST	PNEUMATIC
7-2150897-7	A	CRIMP TOOLING KIT	-

PACIFIC VERSION TERMINATOR
INTERFACE ADAPTER



APPLICATOR DATA		
CRIMP	SIZE	TYPE
WIRE	5.33 mm [.210]	F
INSUL	-	-
APPL INSTRUCTIONS 408-35043		

TERMINAL DATA: TE TERMINAL		TE CRIMP SPECIFICATION	
TERMINAL NAME: TERMINAL, SPRING SPADE			
WIRE STRIP LENGTH		INSULATION DIAMETER RANGE	
6.60-7.36 mm [.260-.290 IN]			
TERMINAL APPLICATION SPECIFICATION	114-2084		
TERMINALS APPLIED			
TE TERMINAL	TE TERMINAL	TE TERMINAL	TE TERMINAL
63610-2			

WIRE SIZE	CRIMP HEIGHT mm [INCH]	CRIMP HEIGHT REFERENCE SETTING
10 AWG OR 5.00mm ²	3.43+/-0.05 [.135+/- .002]	3.2
12 AWG OR 3.00mm ²	3.12+/-0.05 [.123+/- .002]	7.2
14 AWG OR 2.00mm ²	2.92+/-0.05 [.115+/- .002]	9.2



- 1. RECOMMENDED SPARE PARTS
- 2. REFER TO SUPPLIED INSTRUCTION SHEET FOR CLEANING, LUBRICATION AND STORAGE OF APPLICATOR.
- 3. CRIMP HEIGHT REFERENCE SETTING WAS THE SETTING USED WHEN THE APPLICATOR WAS QUALIFIED AT THE FACTORY. ADJUSTMENT MAY BE NECESSARY WHEN RUNNING APPLICATOR IN THE FIELD.
- 4. UNLESS SPECIFIED OTHERWISE TORQUE VALUES SHALL BE USED PER DOCUMENT, 101-35000.

***WARNING**
ON INSTALLATION, SET WIRE DISC TO CRIMP HEIGHT REFERENCE SETTING FOR LARGEST WIRE SIZE. CRIMP HEIGHT REFERENCE SETTINGS GREATER THAN THE VALUE SHOWN MAY CAUSE DAMAGE TO THE CRIMP TOOLING. REFER TO THE INSTRUCTION SHEET FOR PROPER SETUP AND ADJUSTMENTS.

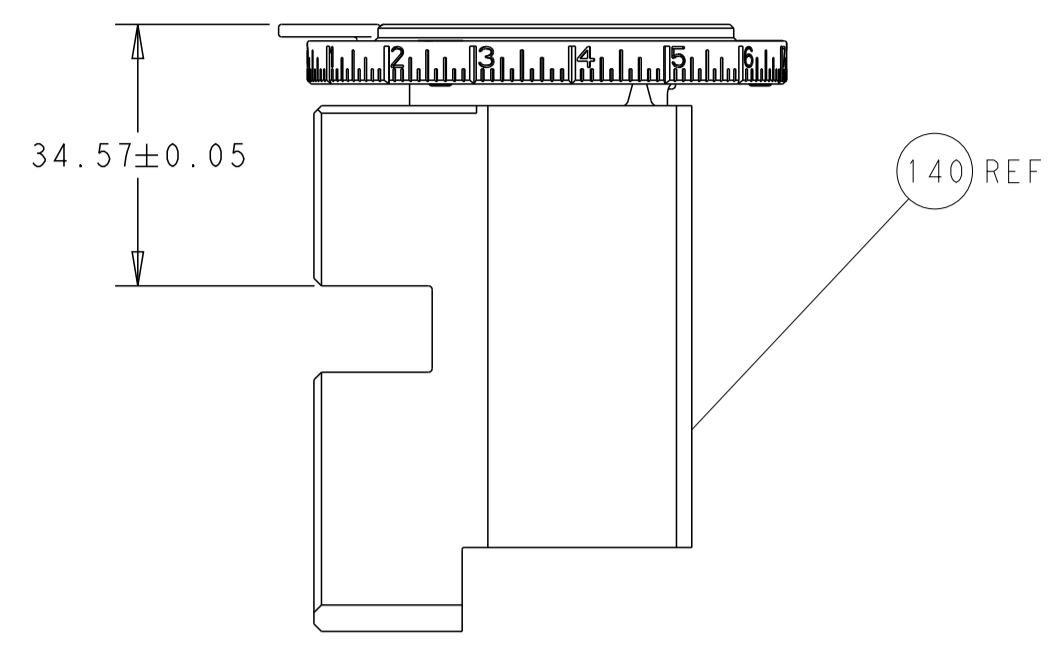
LOC	DIST	REVISIONS					
A	66	P	LTN	DESCRIPTION	DATE	OWN	APVD
		-		SEE SHEET 1			

-	1	1	1803203-1	BLOCK, FRONT DEPRESSOR	261	
-	-	1	2119580-1	MECHANICAL FEED ASSEMBLY	239	
-	1	-	2844940-3	AIR FEED MODULE	238	
-	4	4	2079383-9	SCR, BHSC, RoHS (M6 X 20)	186	
-	REF	REF	994970-2	COUNTER, MAGNETIC	164	
-	1	-	2119641-2	FEED CAM, AIR FEED	152	
-	1	1	2168083-8	SCR, SKT HD CAP, RoHS, M4 X 16	144	
-	-	1	2119653-2	FEED CAM, POST FEED	142	
-	1	1	2119655-6	APPLICATOR BASIC ASSEMBLY, EF	141	
-	1	1	1803518-1	RAM ASSEMBLY, EF PACIFIC	140	
-	1	1	455888-4	SPACER, CRIMPER	82	
-	1	1	2119791-9	DEPRESSOR, WIRE	73	
-	1	1	1803607-4	DOCUMENTATION PACKAGE	71	
-	2	2	2-18032-2	SCR, SET, FLT PNT, M3 X 10.0	70	
-	1	1	2119943-1	WASHER, SPACER	69	
-	1	1	2119740-1	TAG, IDENTIFICATION	67	
-	2	2	2168078-1	SCREW, DRIVE, RH, RoHS, 2 x .188	66	
-	1	1	5-18022-5	SCR, HEX HD CAP, M4 X 6.0	59	
-	-	1	2063961-1	FEED FINGER	58	
-	4	4	2168400-4	SHCS, LOW HEAD, RoHS, M4 X 8	57	
-	2	2	2168083-3	SCR, SKT HD CAP, RoHS, M4 X 12.0	56	
-	2	2	5018030-1	NUT, HEX, REG, RoHS, M3	54	
-	2	2	986965-8	NUT, LOCK, HEX, TORQUE (M4)	53	
-	1	-	2063961-1	FEED FINGER	51	
-	1	2	18023-9	SCR, SKT HD CAP M4 X 6.0	49	
-	-	1	2119652-1	FEED CAM, PRE FEED	48	
-	1	1	1803602-1	SCR, BHSC, RoHS (M8 X 25)	41	
-	8	8	1-18028-2	WASHER, FLAT, REG M4	33	
-	2	2	2168083-8	SCR, SKT HD CAP, RoHS, M4 X 16	31	
-	2	2	2168083-2	SCR, SKT HD CAP, RoHS, M4 X 8.0	29	
-	1	1	240639-1	STRIPPER (MACHINING)	27	
-	2	2	1-2168083-5	SCR, SKT HD CAP, RoHS, M4 X 30	25	
-	1	1	1752371-5	PLATE, STRIP GUIDE	24	
-	2	2	4-22281-1	SPRING, COMPRESSION	22	
-	1	1	1803292-4	DRAG	20	
-	1	1	1901696-4	STRIP GUIDE, REAR	19	
-	1	1	1901695-4	STRIP GUIDE, FRONT	18	
-	1	1	240644-9	PLATE, REAR SHEAR	11	
-	2	2	1-240645-0	SPACER, SHEAR PLATE	10	
-	1	1	240642-1	PLATE, FRONT SHEAR	9	
-	1	1	3-1803002-6	ANVIL, COMBINATION, END FEED	8	
-	1	1	1-240651-6	BLADE, SLUG	7	
-	-	-	-	-	6	
-	1	1	2-240641-5	SPACER	5	
-	-	-	-	-	4	
-	-	-	-	-	3	
-	-	-	-	-	2	
-	1	1	1-456430-8	CRIMPER, WIRE	1	
-	77	22	21	PART NO	DESCRIPTION	ITEM NO

PACIFIC VERSION
Shown on sheets 3 of 4 & 4 of 4
(Atlantic version shown on sheets 1 of 4 & 2 of 4)

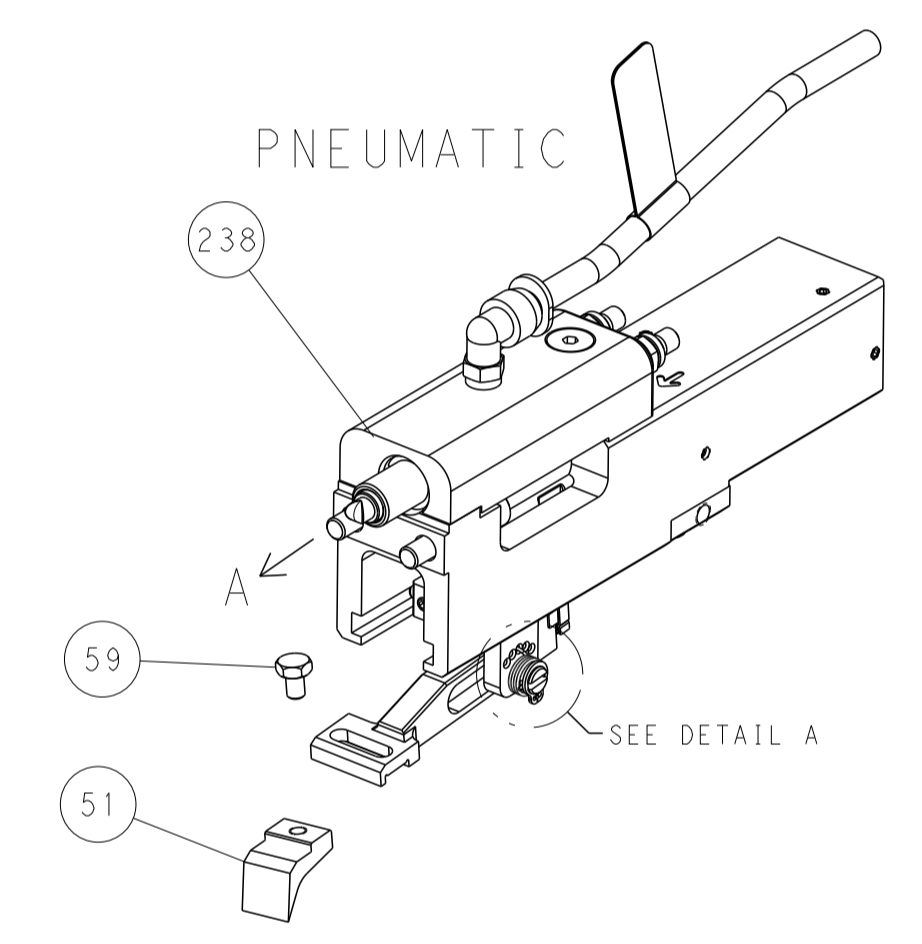
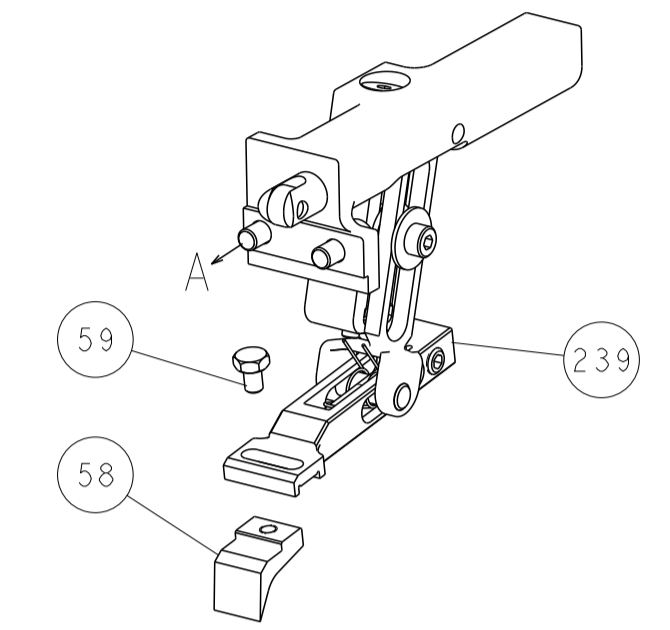
DIMENSIONS: mm		TOLERANCES UNLESS OTHERWISE SPECIFIED:		DWG: H. HUANG 23FEB2018		CHK: L. ZHANG 23FEB2018		NAME: Ocean End Feed Applicator	
0 PLC ±		1 PLC ±		APVD: L. ZHANG 23FEB2018		PRODUCT SPEC		SIZE: A1	
2 PLC ±		3 PLC ±		APPLICATION SPEC		CAGE CODE: 00779		DRAWING NO: 2150897	
4 PLC ±		ANGLES FINISH		WEIGHT		SCALE: 1:1		SHEET 3 OF 4	
MATERIAL		FINISH		Customer Accessible Production Drawing		REV: E		REV: E	

LOC		DIST		REVISIONS			
A	66	P	LTM	DESCRIPTION	DATE	DWN	APVD
		-		SEE SHEET 1	-	-	-

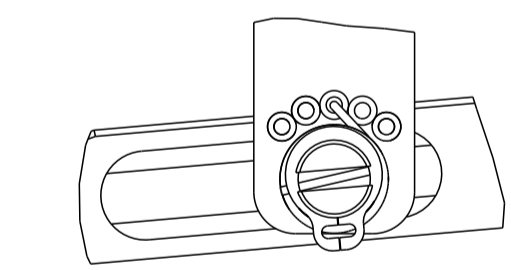


RAM SET-UP

FEED TYPE
MECHANICAL

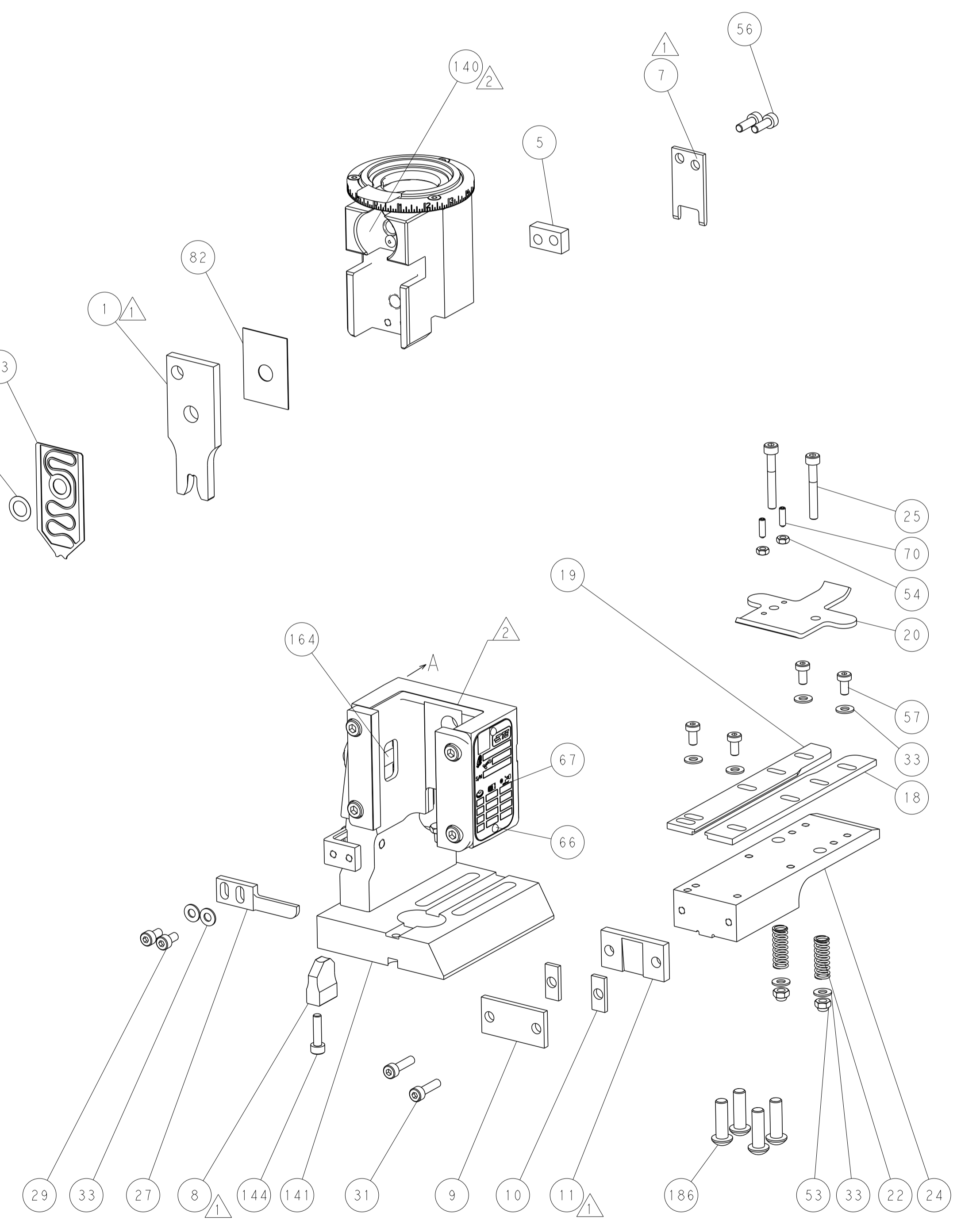
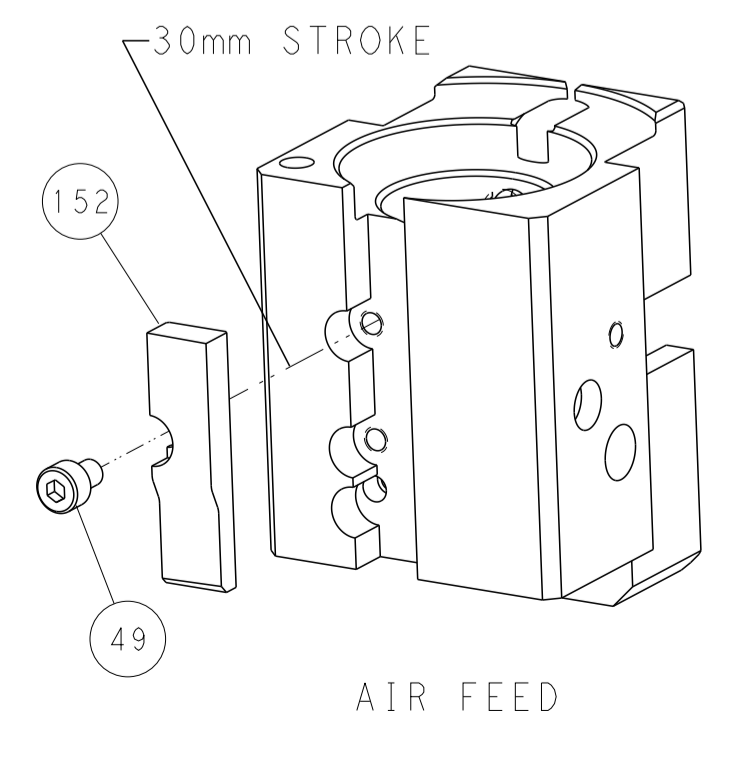
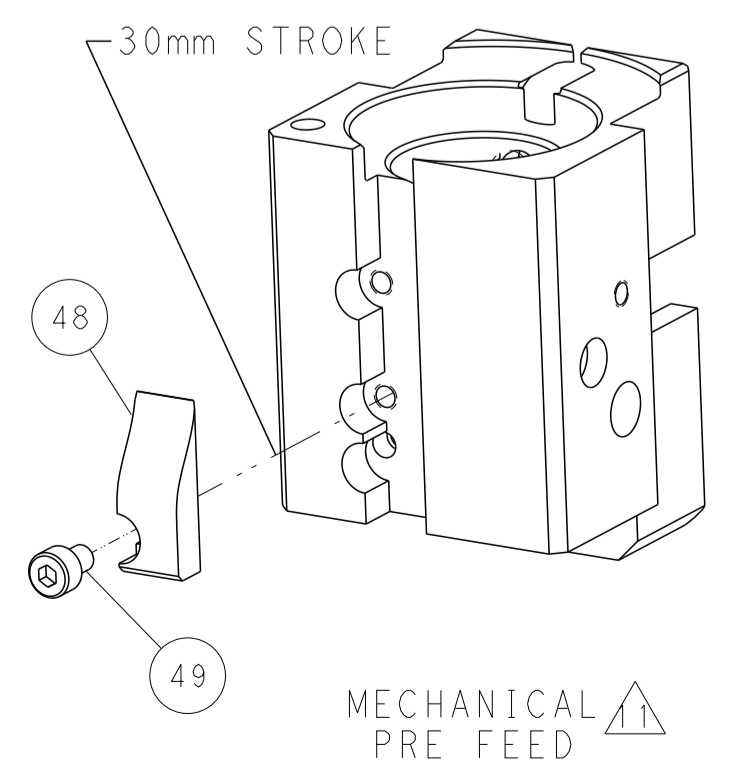
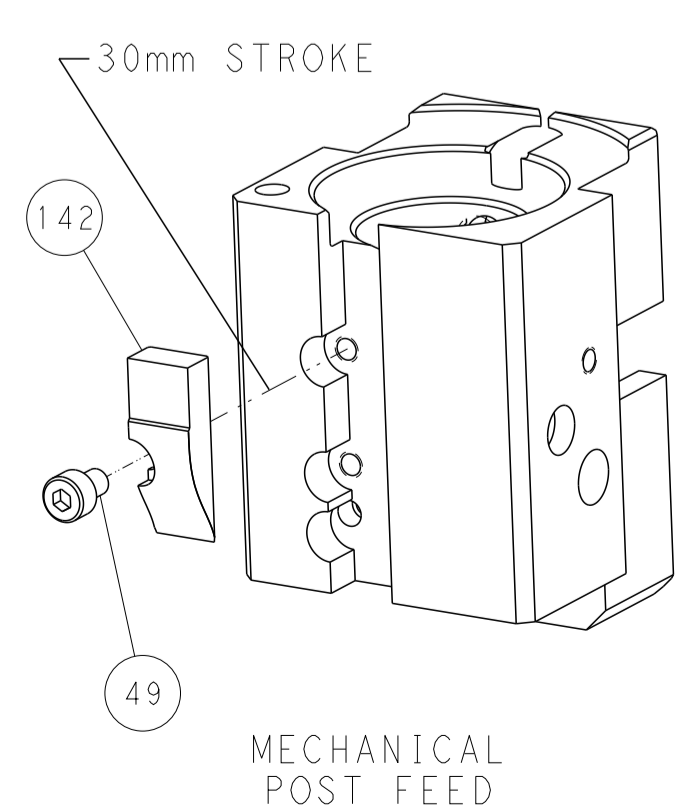


FEED SPRING
SETTING POSITION



DETAIL A

CAM POSITIONS



PACIFIC VERSION
 Shown on sheets 3 of 4 & 4 of 4
 (Atlantic version shown on sheets 1 of 4 & 2 of 4)

DIMENSIONS:		TOLERANCES UNLESS OTHERWISE SPECIFIED:		DWN K. HUANG 23FEB2018		STE TE Connectivity	
mm	0 PLC ±	1 PLC ±	2 PLC ±	3 PLC ±	4 PLC ±	5 PLC ±	Harrisburg, PA 17105-3608
	ANGLES	FINISH		CHK L. ZHANG 23FEB2018	NAME	Customer Accessible Production Drawing	RESTRICTED TO
MATERIAL				APVD L. ZHANG 23FEB2018	PRODUCT SPEC	Customer Accessible Production Drawing	
				APVD L. ZHANG 23FEB2018	APPLICATION SPEC	Customer Accessible Production Drawing	
				APVD L. ZHANG 23FEB2018	SIZE	Customer Accessible Production Drawing	
				APVD L. ZHANG 23FEB2018	CAGE CODE	Customer Accessible Production Drawing	
				APVD L. ZHANG 23FEB2018	DRAWING NO	Customer Accessible Production Drawing	
				APVD L. ZHANG 23FEB2018	SCALE	Customer Accessible Production Drawing	
				APVD L. ZHANG 23FEB2018	SHEET	Customer Accessible Production Drawing	
				APVD L. ZHANG 23FEB2018	OF	Customer Accessible Production Drawing	
				APVD L. ZHANG 23FEB2018	REV	Customer Accessible Production Drawing	
				APVD L. ZHANG 23FEB2018	E	Customer Accessible Production Drawing	