

PART NUMBER	REVISION	DESCRIPTION	FEED TYPE
2150455-1	E	FINE CRIMP HEIGHT ADJUST	MECHANICAL
2150455-2	E	FINE CRIMP HEIGHT ADJUST	PNEUMATIC
7-2150455-1	E	MECHANICAL AND CRIMP TOOLING KIT	MECHANICAL
7-2150455-2	E	PNEUMATIC AND CRIMP TOOLING KIT	PNEUMATIC
7-2150455-7	A	CRIMP TOOLING KIT	-

ATLANTIC VERSION TERMINATOR INTERFACE ADAPTER



APPLICATOR DATA		
CRIMP	SIZE	TYPE
WIRE	3.30 mm [.130]	F
INSUL	5.08 mm [.200]	F
APPL INSTRUCTIONS 408-35043		

TERMINAL DATA: TE TERMINAL		TE CRIMP SPECIFICATION
TERMINAL NAME: 6.35mm E-SPRING CONTACT RECEPTACLE		
WIRE STRIP LENGTH 4.42-5.18 mm [.174-.204 IN]	INSULATION DIAMETER RANGE Ø3.00-3.60 mm [.118-.142 IN]	
TERMINAL APPLICATION SPECIFICATION 114-22017		
TERMINALS APPLIED		
TE TERMINAL 336076-1	TE TERMINAL 336076-3	

WIRE SIZE	CRIMP HEIGHT mm [INCH]	CRIMP HEIGHT REFERENCE SETTING
2.50mm ²	1.77+/-0.05 [.070+/-0.002]	5.8
1.00mm ² + 1.00mm ²	1.65+/-0.05 [.065+/-0.002]	7.5
0.50mm ² + 1.5mm ²	1.65+/-0.05 [.065+/-0.002]	7.5
0.75mm ² + 1.00mm ²	1.59+/-0.05 [.063+/-0.002]	8.0
1.50mm ²	1.53+/-0.05 [.060+/-0.002]	8.7
0.75mm ² + 0.75mm ²	1.53+/-0.05 [.060+/-0.002]	8.8
0.50mm ² + 1.00mm ²	1.53+/-0.05 [.060+/-0.002]	8.9
0.50mm ² + 0.75mm ²	1.53+/-0.05 [.060+/-0.002]	8.8

- 1 RECOMMENDED SPARE PARTS
- 2 REFER TO SUPPLIED INSTRUCTION SHEET FOR CLEANING, LUBRICATION AND STORAGE OF APPLICATOR.
- 3 APPLY PART NUMBER 2-23419-6 LOCTITE TO THREADS OF ITEM 242. APPLY PART NUMBER 1-23419-5 LOCTITE TO THREADS OF ITEM 180.
- 4 CRIMP HEIGHT REFERENCE SETTING WAS THE SETTING USED WHEN THE APPLICATOR WAS QUALIFIED AT THE FACTORY. ADJUSTMENT MAY BE NECESSARY WHEN RUNNING APPLICATOR IN THE FIELD.
- 5 UNLESS SPECIFIED OTHERWISE TORQUE VALUES SHALL BE USED PER DOCUMENT, 101-35000.
- 6 TERMINAL LUBRICANT IS RECOMMENDED.

*WARNING
ON INSTALLATION, SET WIRE DISC TO CRIMP HEIGHT REFERENCE SETTING FOR LARGEST WIRE SIZE. CRIMP HEIGHT REFERENCE SETTINGS GREATER THAN THE VALUE SHOWN MAY CAUSE DAMAGE TO THE CRIMP TOOLING. REFER TO THE INSTRUCTION SHEET FOR PROPER SETUP AND ADJUSTMENTS.

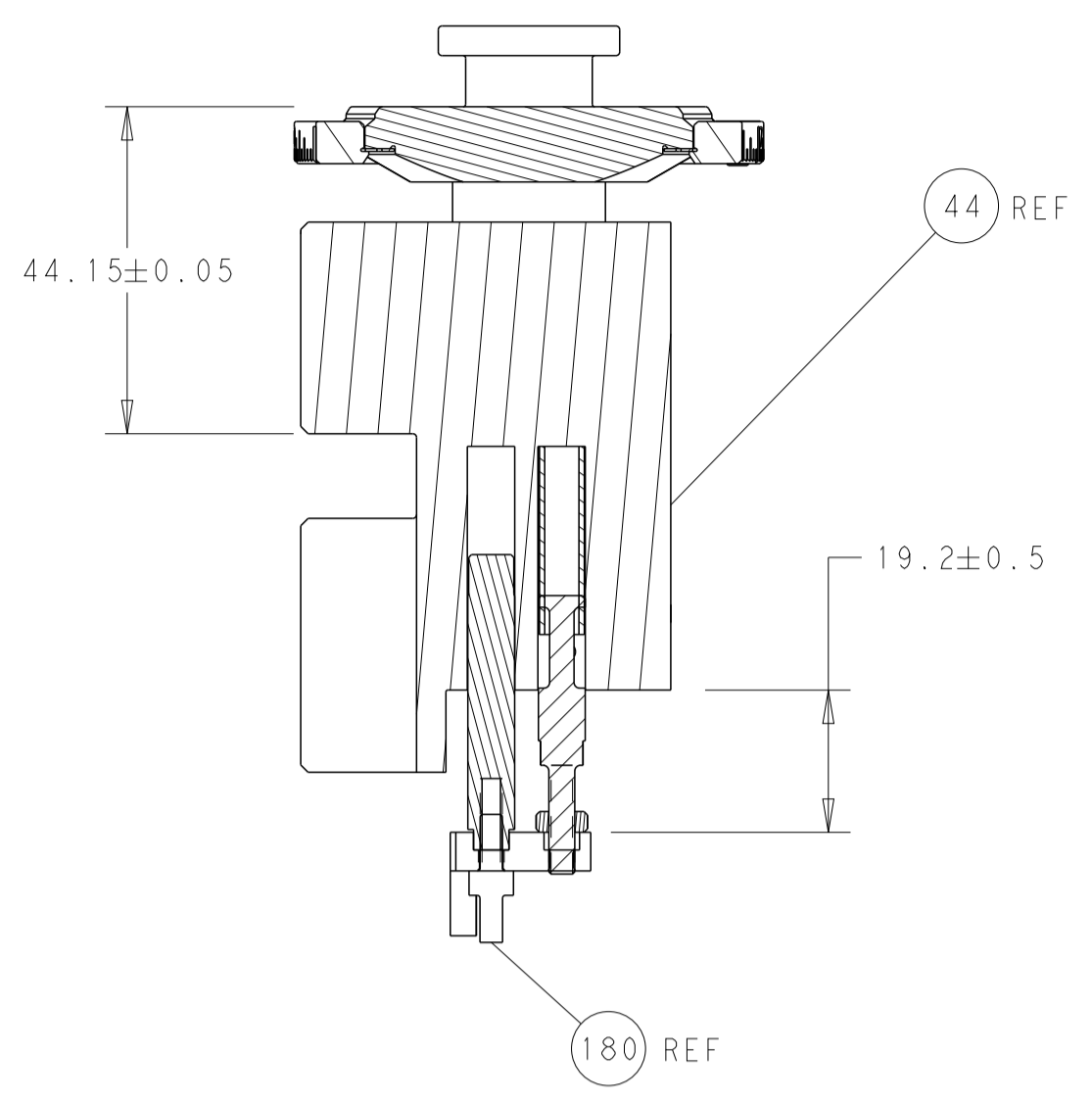
ATLANTIC VERSION
Shown on sheets 1 of 4 & 2 of 4
(Pacific version shown on sheets 3 of 4 & 4 of 4)

LOC	DIST	REVISIONS					
A	66	P	LTN	DESCRIPTION	DATE	OWN	APVD
		B		ECR-19-010288	01JUL2019	TB	GB
		C		ECR-20-000130	06JAN2020	TB	TE
		D		ECR-21-006397	30JUN2021	JWC	TE
		E		ECR-21-006981	21JUL2021	JWC	TE

-	1	-	1	-	2119641-1	FEED CAM, AIR FEED	248	
-	1	1	1	1	2119082-7	CAM, SNAIL, INSULATION ADJUSTMENT	244	
-	1	1	1	1	2079764-1	WASHER, WAVE SPRING, CREST-TO-CREST	243	
3	-	1	1	1	2119083-1	RETAINER, INSULATION DIAL	242	
-	-	1	-	1	2119580-1	MECHANICAL FEED ASSEMBLY	239	
-	1	-	1	-	2844940-3	AIR FEED MODULE	238	
-	1	1	1	1	1-18028-0	WASHER, FLAT, REG M8	192	
3	-	1	1	1	2-1976055-3	STANDOFF, HOLD-DOWN	180	
-	1	1	1	1	6-993111-6	PIN, SLOTTED SPRING 3.0 X 14.0	177	
-	1	1	1	1	8-22280-7	SPRING, COMPRESSION	176	
-	1	1	1	1	1752353-2	GUIDE PIN, HOLDDOWN	175	
-	1	1	1	1	1901680-2	GUIDE PIN, HOLDDOWN	174	
-	REF	REF	REF	REF	994970-2	COUNTER, MAGNETIC	164	
6	-	1	1	1	2119955-2	ASSY, LUBRICATOR, END FEED	84	
-	1	1	1	1	455888-5	SPACER, CRIMPER	82	
-	1	1	1	1	2119791-5	DEPRESSOR, WIRE	73	
-	1	1	1	1	1803607-4	DOCUMENTATION PACKAGE	71	
-	2	2	2	2	2-18032-2	SCR, SET, FLT PNT, M3 X 10.0	70	
-	1	1	1	1	2119740-1	TAG, IDENTIFICATION	67	
-	2	2	2	2	2168078-1	SCREW, DRIVE, RH, RoHS, 2 x .188	66	
-	1	1	1	1	2-1901681-4	HOLDDOWN, TERMINAL	65	
-	1	1	1	1	2168083-2	SCR, SKT HD CAP, RoHS, M4 X 8.0	60	
-	1	1	1	1	5-18022-5	SCR, HEX HD CAP, M4 X 6.0	59	
-	-	1	-	1	2063961-1	FEED FINGER	58	
-	4	4	4	4	2168400-4	SHCS, LOW HEAD, RoHS, M4 X 8	57	
-	2	2	2	2	1-2168083-0	SCR, SKT HD CAP, RoHS, M4 X 10	56	
-	2	2	2	2	5018030-1	NUT, HEX, REG, RoHS, M3	54	
-	2	2	2	2	986965-8	NUT, LOCK, HEX, TORQUE (M4)	53	
-	1	1	1	1	1-5018030-0	NUT, HEX, REG, RoHS, M3.5	52	
-	1	-	1	-	2063961-9	FEED FINGER	51	
-	1	2	1	2	18023-9	SCR, SKT HD CAP M4 X 6.0	49	
-	-	1	-	1	2119652-1	FEED CAM, PRE FEED	48	
-	-	1	-	1	2119653-1	FEED CAM, POST FEED	47	
-	1	1	1	1	2119655-5	APPLICATOR BASIC ASSEMBLY, EF	46	
-	1	1	1	1	1803517-1	RAM ASSEMBLY, EF ATLANTIC	44	
-	1	1	1	1	1803602-1	SCR, BHSC, RoHS (M8 X 25)	41	
-	8	8	8	8	1-18028-2	WASHER, FLAT, REG M4	33	
-	2	2	2	2	2168083-9	SCR, SKT HD CAP, RoHS, M4 X 20	31	
-	2	2	2	2	2168083-2	SCR, SKT HD CAP, RoHS, M4 X 8.0	29	
-	1	1	1	1	240639-1	STRIPPER (MACHINING)	27	
-	2	2	2	2	1-2168083-5	SCR, SKT HD CAP, RoHS, M4 X 30	25	
-	1	1	1	1	1752371-5	PLATE, STRIP GUIDE	24	
-	2	2	2	2	2-22281-3	SPRING, COMPRESSION	22	
-	1	1	1	1	1803292-4	DRAG	20	
-	2	2	2	2	1901259-5	GUIDE, LOWER STRIP	18	
-	4	4	4	4	1-2079383-1	SCR, BHSC, RoHS (M6 X 12)	17	
-	1	1	1	1	1-240641-9	SPACER	16	
-	1	1	1	1	1752360-1	SPACER, HOLD-DOWN	13	
1	-	1	1	1	240644-1	PLATE, REAR SHEAR	11	
-	-	-	-	-	-	-	10	
1	-	1	1	1	690482-6	PLATE, FRONT SHEAR	9	
1	1	2	2	1	1803060-8	ANVIL, COMBINATION, END FEED	8	
1	-	1	1	1	2217206-4	BLADE, SLUG	7	
-	-	-	-	-	-	-	6	
-	1	1	1	1	240641-1	SPACER	5	
-	1	1	1	1	238011-2	BLOCK, CRIMPER SPACER	4	
1	1	2	2	1	1	4-1803017-0	CRIMPER, INSULATION F	3
-	-	-	-	-	-	-	2	
1	1	2	2	1	1	7-1633730-0	CRIMPER, WIRE	1
-	-	-	-	-	-	-	-	
-	77	72	71	2	-1	PART NO	DESCRIPTION	ITEM NO

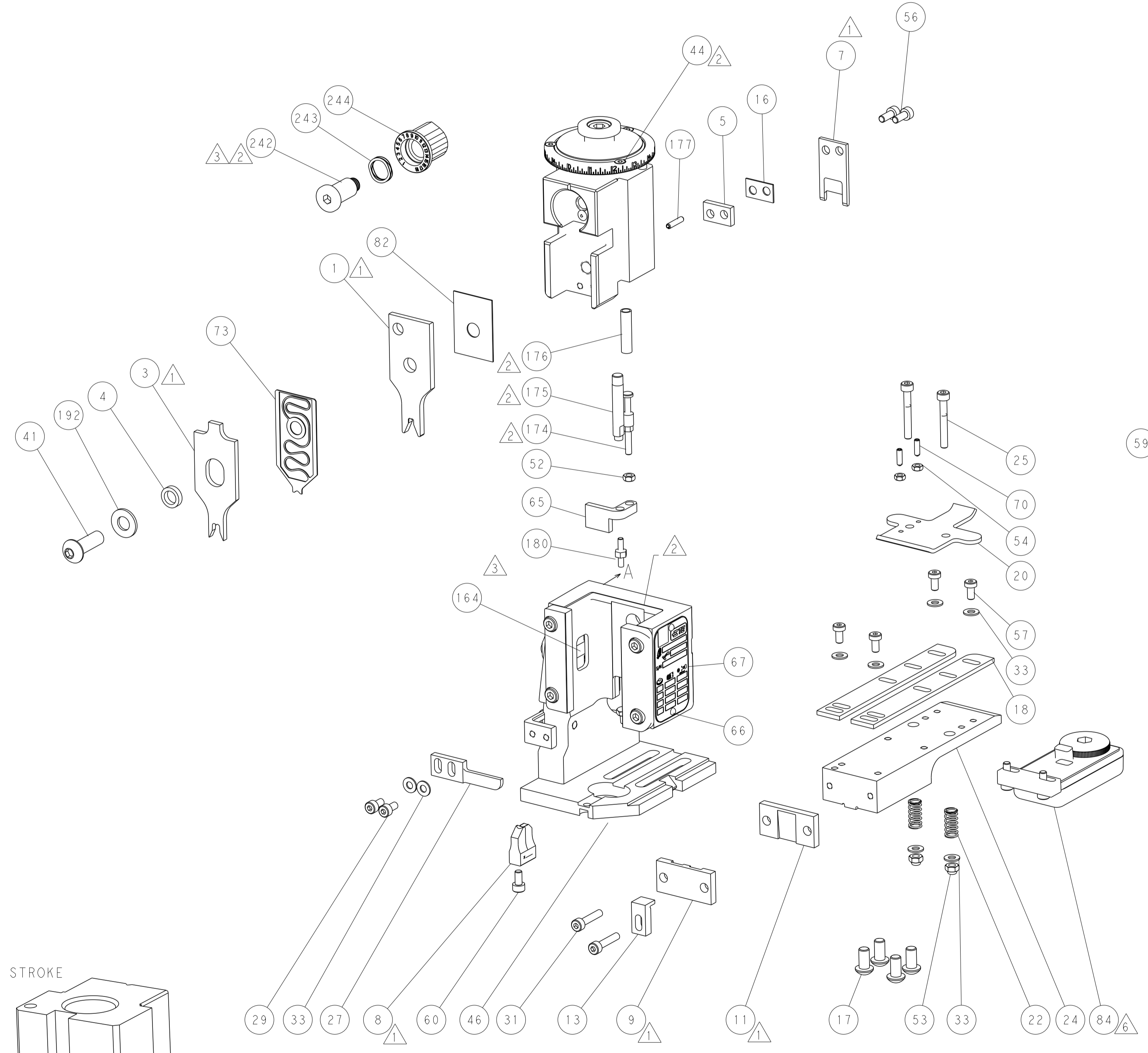
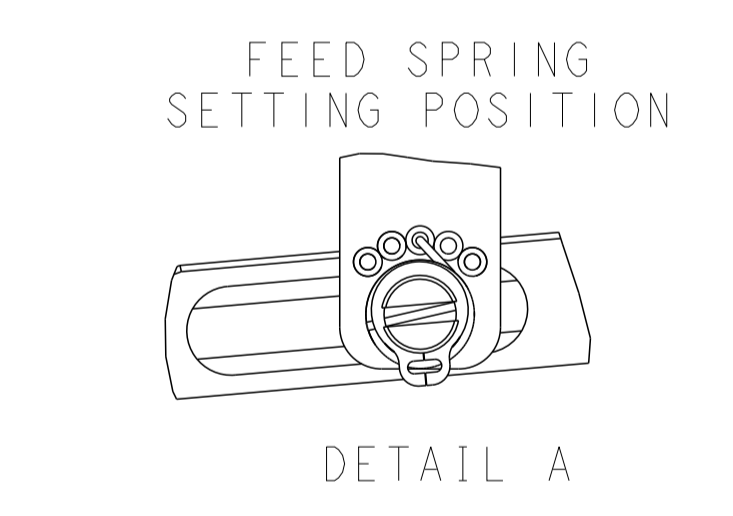
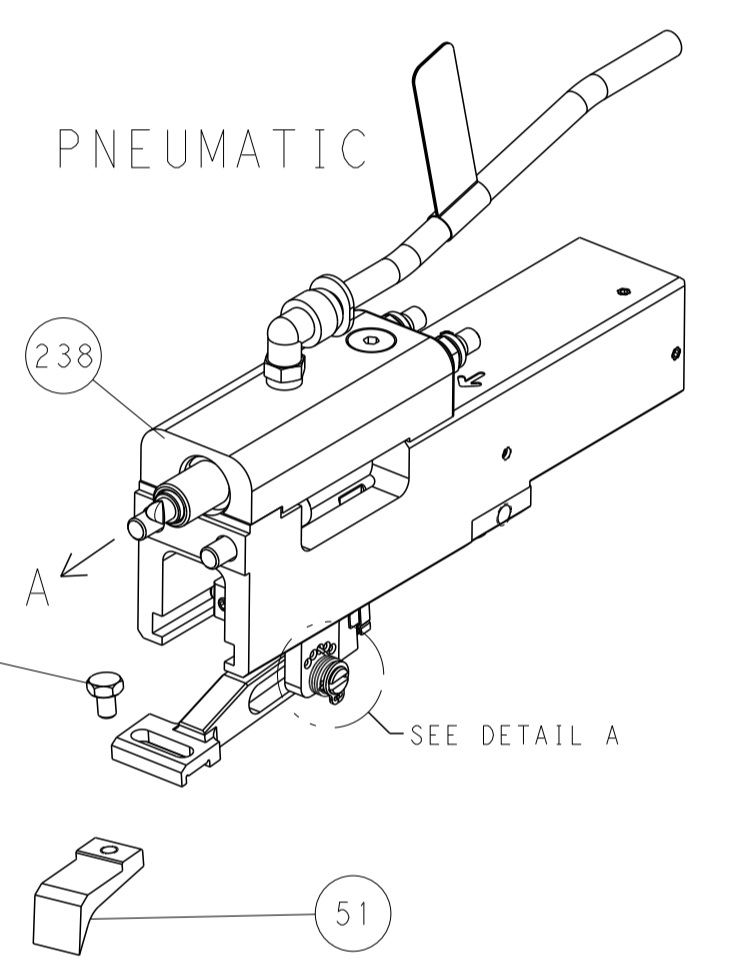
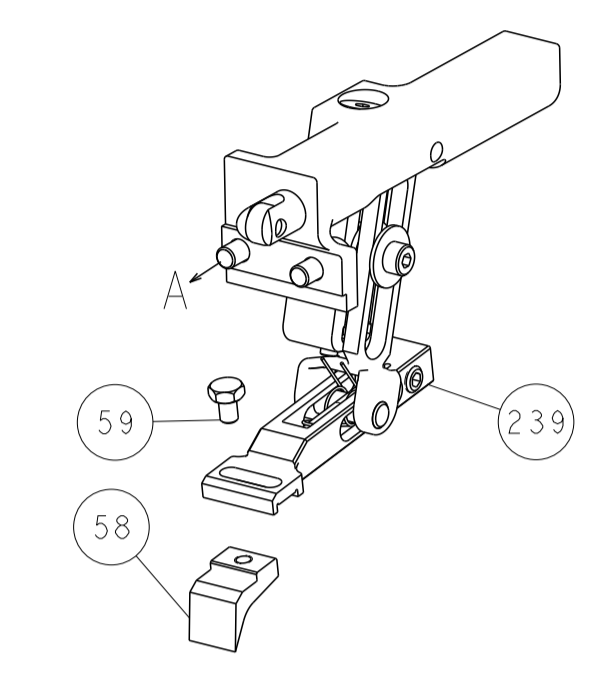
DIMENSIONS: 		TOLERANCES UNLESS OTHERWISE SPECIFIED: 0 PLC ±. 1 PLC ±. 2 PLC ±. 3 PLC ±. 4 PLC ±. ANGLES ±. FINISH ±.		DWN: HOFFNER 25 JUNE 2014 CHK: T. ELBIN 26 JUNE 2014 APVD: T. ELBIN 26 JUNE 2014 PRODUCT SPEC APPLICATION SPEC		TE Connectivity Harrisburg, PA 17105-3608	
MATERIAL: .		WEIGHT: .		SIZE: A1 CAGE CODE: 00779 DRAWING NO: C=2150455		RESTRICTED TO: .	
Customer Accessible Production Drawing				SCALE: 1:1		SHEET 1 OF 4	

LOC	DIST	REVISIONS					
A	66	P	LTM	DESCRIPTION	DATE	OWN	APVD
		-	-	SEE SHEET 1	-	-	-

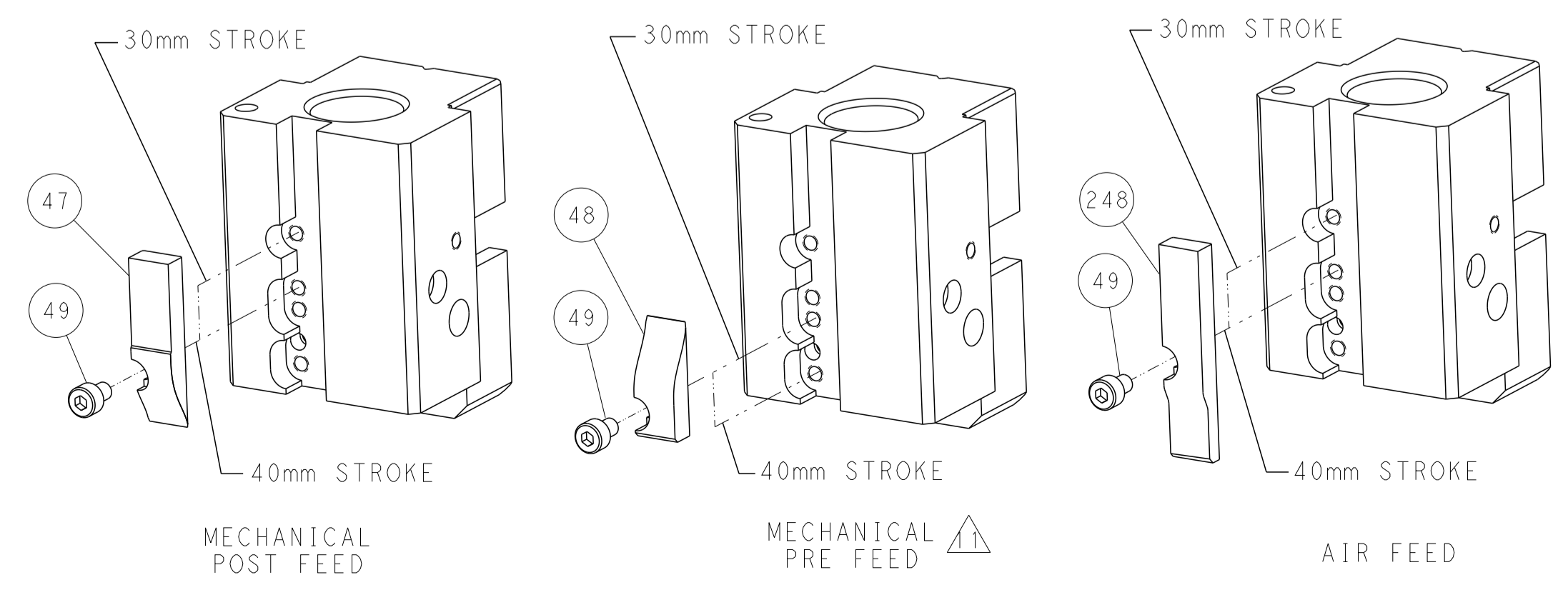


RAM AND HOLDDOWN SET-UP

FEED TYPE MECHANICAL



CAM POSITIONS



ATLANTIC VERSION
 Shown on sheets 1 of 4 & 2 of 4
 (Pacific version shown on sheets 3 of 4 & 4 of 4)

<small>THIS DRAWING IS UNPUBLISHED. RELEASED FOR PUBLICATION BY TYCO ELECTRONICS CORPORATION. ALL RIGHTS RESERVED.</small>		DWN: HOFFNER 25JUNE2014 CHK: T.ELBIN 26JUNE2014 APVD: T.ELBIN 26JUNE2014	TE Connectivity Harrisburg, PA 17105-3608
DIMENSIONS: mm TOLERANCES UNLESS OTHERWISE SPECIFIED: 0 PLC ± 1 PLC ± 2 PLC ± 3 PLC ± 4 PLC ± ANGLES ± FINISH	NAME: Ocean End Feed Applicator SIZE: A1 CAGE CODE: 00779 DRAWING NO: 2150455	RESTRICTED TO: - SCALE: 1:1 SHEET: 2 OF 4 REV: E	CUSTOMER ACCESSIBLE PRODUCTION DRAWING

PART NUMBER	REVISION	DESCRIPTION	FEED TYPE
2-2150455-1	E	FINE CRIMP HEIGHT ADJUST	MECHANICAL
2-2150455-2	E	FINE CRIMP HEIGHT ADJUST	PNEUMATIC
7-2150455-7	A	CRIMP TOOLING KIT	-

PACIFIC VERSION TERMINATOR
INTERFACE ADAPTER



APPLICATOR DATA		
CRIMP	SIZE	TYPE
WIRE	3.30 mm [.130]	F
INSUL	5.08 mm [.200]	F
APPL INSTRUCTIONS 408-35043		

TERMINAL DATA: TE TERMINAL		TE CRIMP SPECIFICATION	
TERMINAL NAME: 6.35mm E-SPRING CONTACT RECEPTACLE			
WIRE STRIP LENGTH 4.42-5.18 mm [.174-.204 IN]		INSULATION DIAMETER RANGE Ø3.00-3.60 mm [.118-.142 IN]	
TERMINAL APPLICATION SPECIFICATION	114-22017	-	-
TERMINALS APPLIED			
TE TERMINAL	TE TERMINAL	TE TERMINAL	TE TERMINAL
336076-1	336076-3		

WIRE SIZE	CRIMP HEIGHT mm [INCH]	CRIMP HEIGHT REFERENCE SETTING
2.50mm ²	1.77+/-0.05 [.070+/- .002]	5.8
1.00mm ² + 1.00mm ²	1.65+/-0.05 [.065+/- .002]	7.5
0.50mm ² + 1.5mm ²	1.65+/-0.05 [.065+/- .002]	7.5
0.75mm ² + 1.00mm ²	1.59+/-0.05 [.063+/- .002]	8.0
1.50mm ²	1.53+/-0.05 [.060+/- .002]	8.7
0.75mm ² + 0.75mm ²	1.53+/-0.05 [.060+/- .002]	8.8
0.50mm ² + 1.00mm ²	1.53+/-0.05 [.060+/- .002]	8.9
0.50mm ² + 0.75mm ²	1.53+/-0.05 [.060+/- .002]	8.8



- RECOMMENDED SPARE PARTS
- REFER TO SUPPLIED INSTRUCTION SHEET FOR CLEANING, LUBRICATION AND STORAGE OF APPLICATOR.
- APPLY PART NUMBER 2-23419-6 LOCTITE TO THREADS OF ITEM 242. APPLY PART NUMBER 1-23419-5 LOCTITE TO THREADS OF ITEM 180.
- CRIMP HEIGHT REFERENCE SETTING WAS THE SETTING USED WHEN THE APPLICATOR WAS QUALIFIED AT THE FACTORY. ADJUSTMENT MAY BE NECESSARY WHEN RUNNING APPLICATOR IN THE FIELD.
- UNLESS SPECIFIED OTHERWISE TORQUE VALUES SHALL BE USED PER DOCUMENT, 101-35000.
- TERMINAL LUBRICANT IS RECOMMENDED.

***WARNING**
ON INSTALLATION, SET WIRE DISC TO CRIMP HEIGHT REFERENCE SETTING FOR LARGEST WIRE SIZE. CRIMP HEIGHT REFERENCE SETTINGS GREATER THAN THE VALUE SHOWN MAY CAUSE DAMAGE TO THE CRIMP TOOLING. REFER TO THE INSTRUCTION SHEET FOR PROPER SETUP AND ADJUSTMENTS.

PACIFIC VERSION
Shown on sheets 3 of 4 & 4 of 4
(Atlantic version shown on sheets 1 of 4 & 2 of 4)

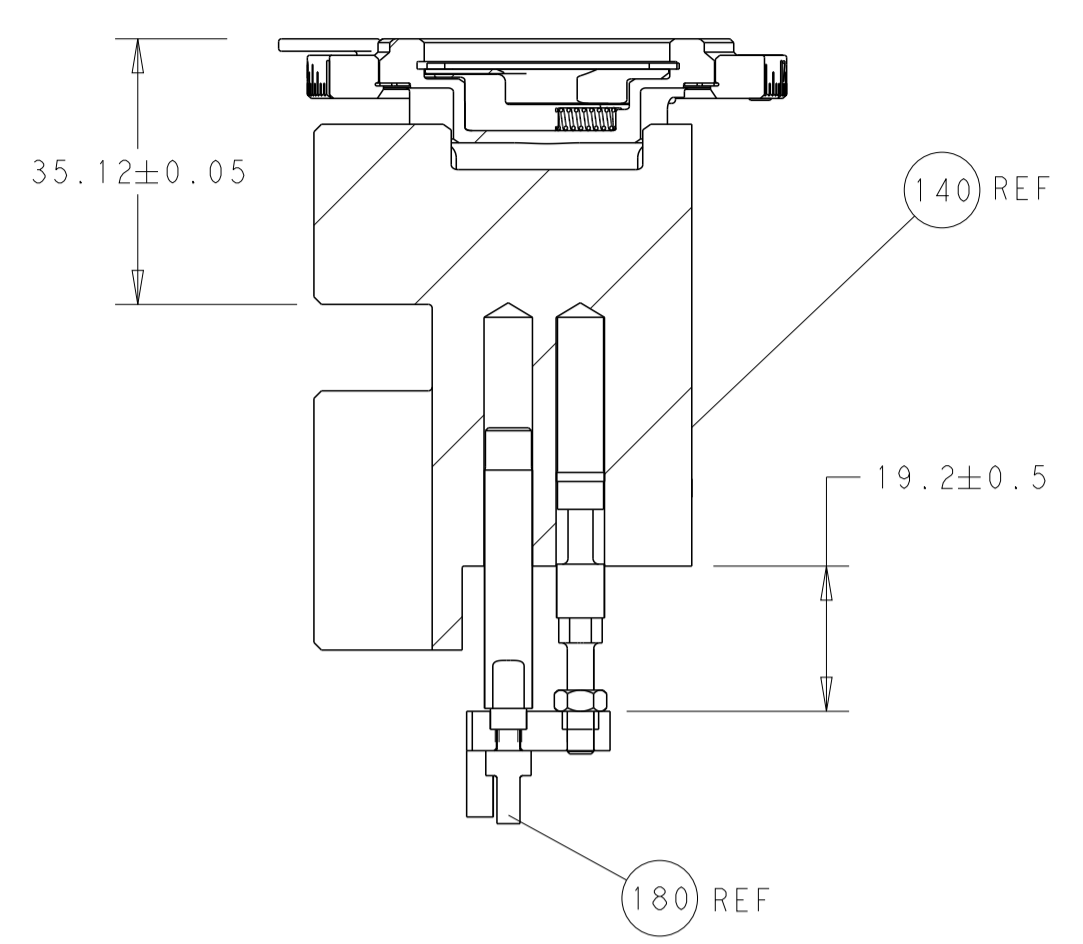
LOC	DIST	REVISIONS					
A	66	P	LTN	DESCRIPTION	DATE	OWN	APVD
-	-	-	-	SEE SHEET 1	-	-	-

-	1	1	2119082-7	CAM, SNAIL, INSULATION ADJUSTMENT	244
-	1	1	2079764-1	WASHER, WAVE SPRING, CREST-TO-CREST	243
3	-	1	2119083-1	RETAINER, INSULATION DIAL	242
-	-	1	2119580-1	MECHANICAL FEED ASSEMBLY	239
-	1	-	2844940-3	AIR FEED MODULE	238
-	1	1	1-18028-0	WASHER, FLAT, REG M8	192
-	4	4	2079383-9	SCR, BHSC, RoHS (M6 X 20)	186
3	-	1	2-1976055-3	STANDOFF, HOLD-DOWN	180
-	1	1	6-993111-6	PIN, SLOTTED SPRING 3.0 X 14.0	177
-	1	1	8-22280-7	SPRING, COMPRESSION	176
-	1	1	1752353-2	GUIDE PIN, HOLDDOWN	175
-	1	1	1901680-2	GUIDE PIN, HOLDDOWN	174
-	REF	REF	994970-2	COUNTER, MAGNETIC	164
-	1	-	2119641-2	FEED CAM, AIR FEED	152
-	1	1	2168083-8	SCR, SKT HD CAP, RoHS, M4 X 16	144
-	-	1	2119653-2	FEED CAM, POST FEED	142
-	1	1	2119655-6	APPLICATOR BASIC ASSEMBLY, EF	141
-	1	1	1803518-1	RAM ASSEMBLY, EF PACIFIC	140
6	-	1	2119955-2	ASSY, LUBRICATOR, END FEED	84
-	1	1	455888-5	SPACER, CRIMPER	82
-	1	1	2119791-5	DEPRESSOR, WIRE	73
-	1	1	1803607-4	DOCUMENTATION PACKAGE	71
-	2	2	2-18032-2	SCR, SET, FLT PNT, M3 X 10.0	70
-	1	1	2119740-1	TAG, IDENTIFICATION	67
-	2	2	2168078-1	SCREW, DRIVE, RH, RoHS, 2 x .188	66
-	1	1	2-1901681-4	HOLDDOWN, TERMINAL	65
-	1	1	5-18022-5	SCR, HEX HD CAP, M4 X 6.0	59
-	-	1	2063961-1	FEED FINGER	58
-	4	4	2168400-4	SHCS, LOW HEAD, RoHS, M4 X 8	57
-	2	2	1-2168083-0	SCR, SKT HD CAP, RoHS, M4 X 10	56
-	2	2	5018030-1	NUT, HEX, REG, RoHS, M3	54
-	2	2	986965-8	NUT, LOCK, HEX, TORQUE (M4)	53
-	1	1	1-5018030-0	NUT, HEX, REG, RoHS, M3.5	52
-	1	-	2063961-9	FEED FINGER	51
-	1	2	18023-9	SCR, SKT HD CAP M4 X 6.0	49
-	-	1	2119652-1	FEED CAM, PRE FEED	48
-	1	1	1803602-1	SCR, BHSC, RoHS (M8 X 25)	41
-	8	8	1-18028-2	WASHER, FLAT, REG M4	33
-	2	2	2168083-9	SCR, SKT HD CAP, RoHS, M4 X 20	31
-	2	2	2168083-2	SCR, SKT HD CAP, RoHS, M4 X 8.0	29
-	1	1	240639-1	STRIPPER (MACHINING)	27
-	2	2	1-2168083-5	SCR, SKT HD CAP, RoHS, M4 X 30	25
-	1	1	1752371-5	PLATE, STRIP GUIDE	24
-	2	2	2-22281-3	SPRING, COMPRESSION	22
-	1	1	1803292-4	DRAG	20
-	2	2	1901259-5	GUIDE, LOWER STRIP	18
-	1	1	1-240641-9	SPACER	16
-	1	1	1752360-1	SPACER, HOLD-DOWN	13
1	-	1	240644-1	PLATE, REAR SHEAR	11
-	-	-	-	-	10
1	-	1	690482-6	PLATE, FRONT SHEAR	9
1	1	1	1803060-8	ANVIL, COMBINATION, END FEED	8
1	-	1	2217206-4	BLADE, SLUG	7
-	-	-	-	-	6
-	1	1	240641-1	SPACER	5
-	1	1	238011-2	BLOCK, CRIMPER SPACER	4
1	1	1	4-1803017-0	CRIMPER, INSULATION F	3
-	-	-	-	-	2
1	1	1	7-1633730-0	CRIMPER, WIRE	1
-	77	22	21	PART NO	ITEM NO

DIMENSIONS:		TOLERANCES UNLESS OTHERWISE SPECIFIED:		DRAWING NO	
mm	0 PLC ±	1 PLC ±	2 PLC ±	3 PLC ±	4 PLC ±
ANGLES	FINISH		WEIGHT		SCALE
MATERIAL	FINISH		WEIGHT		SCALE

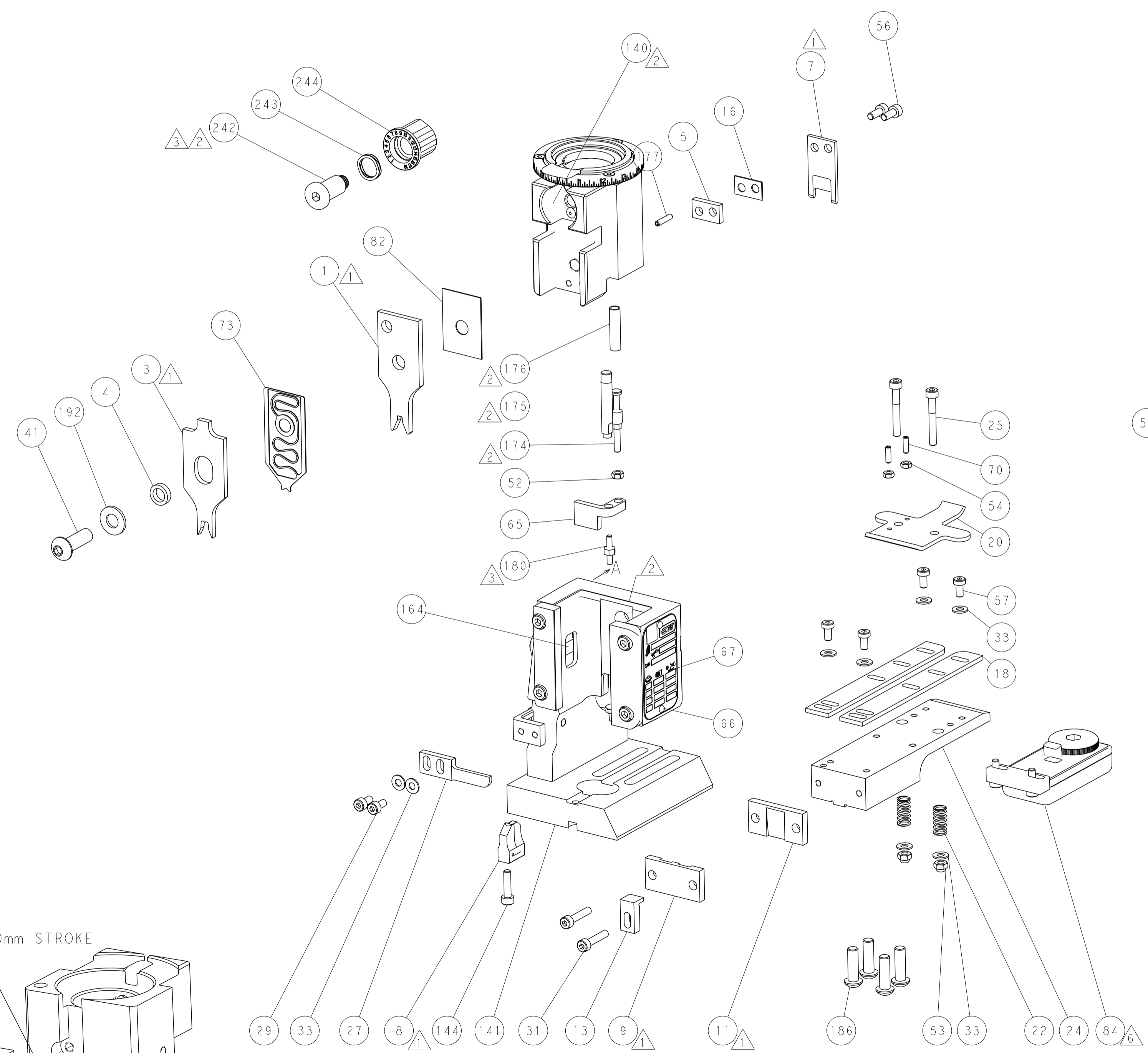
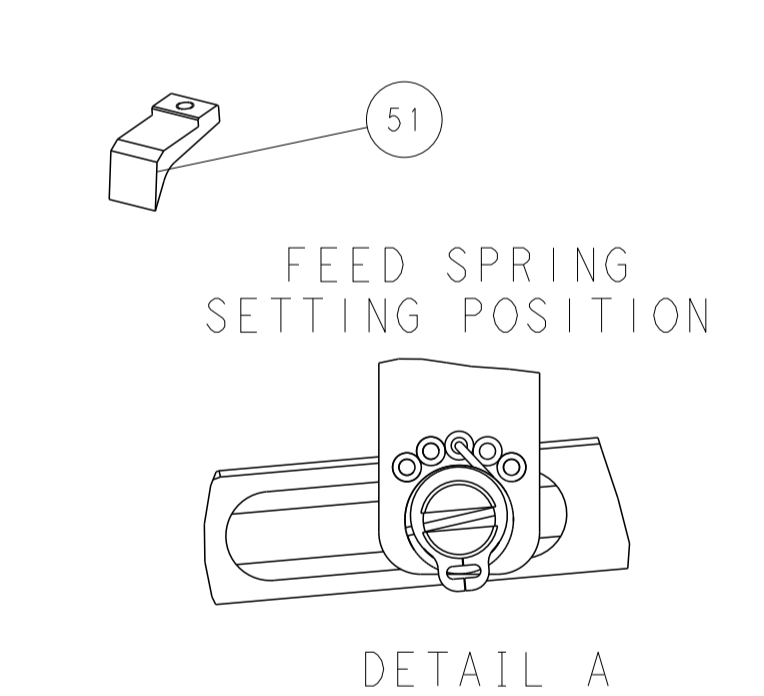
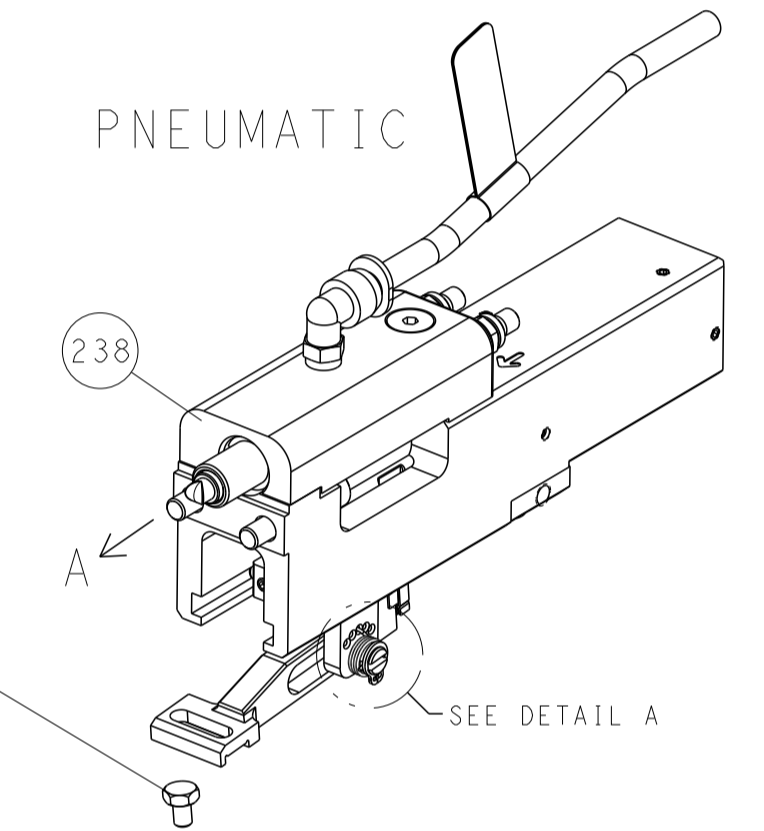
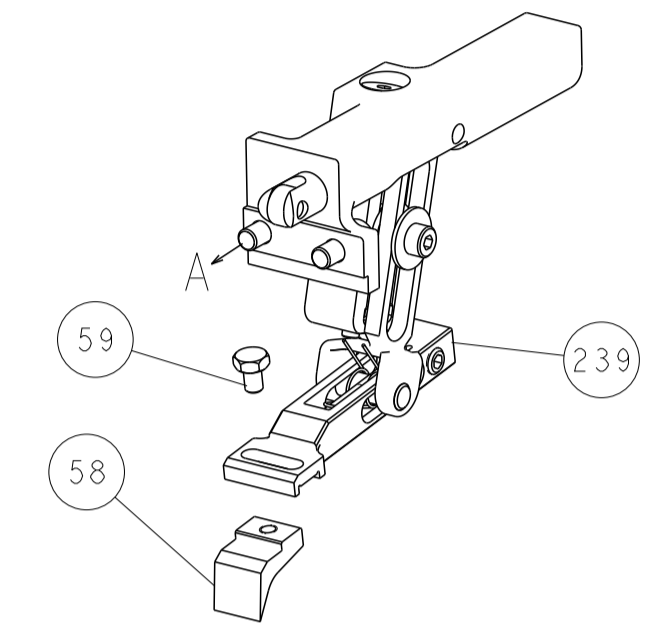
OWN	25 JUNE 2014	TE Connectivity	
CHK	26 JUNE 2014	Harrisburg, PA 17105-3608	
APVD	26 JUNE 2014	Ocean End Feed Applicator	
PRODUCT SPEC	-		
APPLICATION SPEC	-		
SIZE	CAGE CODE	DRAWING NO	RESTRICTED TO
A1	00779	2150455	-
Customer Accessible Production Drawing		SCALE	SHEET 3 OF 4
		1:1	REV E

LOC	DIST	REVISIONS					
A	66	P	LTM	DESCRIPTION	DATE	OWN	APVD
		-		SEE SHEET 1			

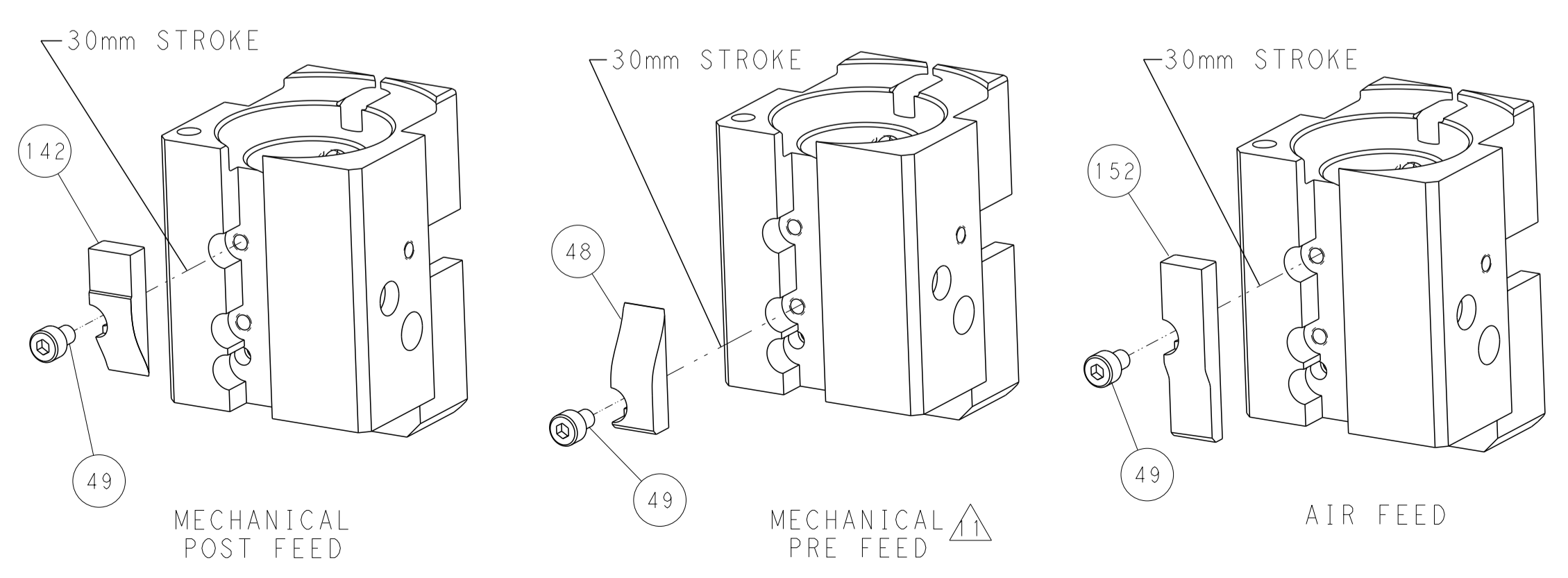


RAM AND HOLDDOWN SET-UP

FEED TYPE
MECHANICAL



CAM POSITIONS



PACIFIC VERSION
 Shown on sheets 3 of 4 & 4 of 4
 (Atlantic version shown on sheets 1 of 4 & 2 of 4)

DIMENSIONS:		TOLERANCES UNLESS OTHERWISE SPECIFIED:		OWN: HOFFNER 25 JUNE 2014		TE Connectivity	
mm		0 PLC ±		CHK: T. ELBIN 26 JUNE 2014		Harrisburg, PA 17105-3608	
Ø		1 PLC ±		APVD: T. ELBIN 26 JUNE 2014		NAME: Ocean End Feed Applicator	
H		2 PLC ±		PRODUCT SPEC		SIZE: CAGE CODE: DRAWING NO: RESTRICTED TO	
L		3 PLC ±		APPLICATION SPEC		A11 00779 ©=2150455	
R		4 PLC ±		WEIGHT		Customer Accessible Production Drawing	
S		5 PLC ±		SCALE: 1:1		SHEET 4 OF 4	
T		6 PLC ±		REVISIONS		REV E	
Ø		7 PLC ±		DATE		DATE	
H		8 PLC ±		OWN		OWN	
L		9 PLC ±		APVD		APVD	
R		10 PLC ±		DESCRIPTION		DESCRIPTION	
S		11 PLC ±		DATE		DATE	
T		12 PLC ±		OWN		OWN	
Ø		13 PLC ±		APVD		APVD	
H		14 PLC ±		DESCRIPTION		DESCRIPTION	
L		15 PLC ±		DATE		DATE	
R		16 PLC ±		OWN		OWN	
S		17 PLC ±		APVD		APVD	
T		18 PLC ±		DESCRIPTION		DESCRIPTION	
Ø		19 PLC ±		DATE		DATE	
H		20 PLC ±		OWN		OWN	
L		21 PLC ±		APVD		APVD	
R		22 PLC ±		DESCRIPTION		DESCRIPTION	
S		23 PLC ±		DATE		DATE	
T		24 PLC ±		OWN		OWN	
Ø		25 PLC ±		APVD		APVD	
H		26 PLC ±		DESCRIPTION		DESCRIPTION	
L		27 PLC ±		DATE		DATE	
R		28 PLC ±		OWN		OWN	
S		29 PLC ±		APVD		APVD	
T		30 PLC ±		DESCRIPTION		DESCRIPTION	
Ø		31 PLC ±		DATE		DATE	
H		32 PLC ±		OWN		OWN	
L		33 PLC ±		APVD		APVD	
R		34 PLC ±		DESCRIPTION		DESCRIPTION	
S		35 PLC ±		DATE		DATE	
T		36 PLC ±		OWN		OWN	
Ø		37 PLC ±		APVD		APVD	
H		38 PLC ±		DESCRIPTION		DESCRIPTION	
L		39 PLC ±		DATE		DATE	
R		40 PLC ±		OWN		OWN	
S		41 PLC ±		APVD		APVD	
T		42 PLC ±		DESCRIPTION		DESCRIPTION	
Ø		43 PLC ±		DATE		DATE	
H		44 PLC ±		OWN		OWN	
L		45 PLC ±		APVD		APVD	
R		46 PLC ±		DESCRIPTION		DESCRIPTION	
S		47 PLC ±		DATE		DATE	
T		48 PLC ±		OWN		OWN	
Ø		49 PLC ±		APVD		APVD	
H		50 PLC ±		DESCRIPTION		DESCRIPTION	
L		51 PLC ±		DATE		DATE	
R		52 PLC ±		OWN		OWN	
S		53 PLC ±		APVD		APVD	
T		54 PLC ±		DESCRIPTION		DESCRIPTION	
Ø		55 PLC ±		DATE		DATE	
H		56 PLC ±		OWN		OWN	
L		57 PLC ±		APVD		APVD	
R		58 PLC ±		DESCRIPTION		DESCRIPTION	
S		59 PLC ±		DATE		DATE	
T		60 PLC ±		OWN		OWN	
Ø		61 PLC ±		APVD		APVD	
H		62 PLC ±		DESCRIPTION		DESCRIPTION	
L		63 PLC ±		DATE		DATE	
R		64 PLC ±		OWN		OWN	
S		65 PLC ±		APVD		APVD	
T		66 PLC ±		DESCRIPTION		DESCRIPTION	
Ø		67 PLC ±		DATE		DATE	
H		68 PLC ±		OWN		OWN	
L		69 PLC ±		APVD		APVD	
R		70 PLC ±		DESCRIPTION		DESCRIPTION	
S		71 PLC ±		DATE		DATE	
T		72 PLC ±		OWN		OWN	
Ø		73 PLC ±		APVD		APVD	
H		74 PLC ±		DESCRIPTION		DESCRIPTION	
L		75 PLC ±		DATE		DATE	
R		76 PLC ±		OWN		OWN	
S		77 PLC ±		APVD		APVD	
T		78 PLC ±		DESCRIPTION		DESCRIPTION	
Ø		79 PLC ±		DATE		DATE	
H		80 PLC ±		OWN		OWN	
L		81 PLC ±		APVD		APVD	
R		82 PLC ±		DESCRIPTION		DESCRIPTION	
S		83 PLC ±		DATE		DATE	
T		84 PLC ±		OWN		OWN	
Ø		85 PLC ±		APVD		APVD	
H		86 PLC ±		DESCRIPTION		DESCRIPTION	
L		87 PLC ±		DATE		DATE	
R		88 PLC ±		OWN		OWN	
S		89 PLC ±		APVD		APVD	
T		90 PLC ±		DESCRIPTION		DESCRIPTION	
Ø		91 PLC ±		DATE		DATE	
H		92 PLC ±		OWN		OWN	
L		93 PLC ±		APVD		APVD	
R		94 PLC ±		DESCRIPTION		DESCRIPTION	
S		95 PLC ±		DATE		DATE	
T		96 PLC ±		OWN		OWN	
Ø		97 PLC ±		APVD		APVD	
H		98 PLC ±		DESCRIPTION		DESCRIPTION	
L		99 PLC ±		DATE		DATE	
R		100 PLC ±		OWN		OWN	