

THIS DRAWING IS UNPUBLISHED. RELEASED FOR PUBLICATION

BY TYCO ELECTRONICS CORPORATION. ALL RIGHTS RESERVED.

ATLANTIC VERSION TERMINATOR INTERFACE ADAPTER	PART NUMBER	REVISION	DESCRIPTION	FEED TYPE	APPLICATOR STYLE CONVERSION CHART						
					CONVERT TO	PART NUMBERS REQUIRED					
	2150249-1	A	FINE CRIMP HEIGHT ADJUST	MECHANICAL	PNEUMATIC FEED	2119950-1	2119792-1	-	2119641-1	-	2063440-1
					SERVO LATCH PLATE	2119951-1	1901697-1	8-2150249-5	-	-	2168400-7 (QUANTITY 2)
					SMART APPLICATOR	2161326-1	-	8-2150249-4	-	-	-
	2150249-2	A	FINE CRIMP HEIGHT ADJUST	PNEUMATIC	MECHANICAL FEED	2119949-1	2063961-1	5-18022-5	2119653-1	-	-
					SERVO LATCH PLATE	2119951-1	1901697-1	8-2150249-5	-	-	2168400-7 (QUANTITY 2)
					SMART APPLICATOR	2161326-1	-	8-2150249-4	-	-	-
	2150249-5	A	FINE CRIMP HEIGHT ADJUST	SERVO LATCH PLATE	MECHANICAL FEED	2119949-1	2063961-1	5-18022-5	2119653-1	-	-
					PNEUMATIC FEED	2119950-1	2119792-1	-	2119641-1	-	2063440-1
	2150249-6	A	NON-CRIMP HEIGHT ADJUST	SERVO LATCH PLATE	-	-	-	-	-	-	-
	2150249-7	A	FINE CRIMP HEIGHT ADJUST	NONE	-	-	-	-	-	-	-
	7-2150249-7	A	CRIMP TOOLING KIT	-	-	-	-	-	-	-	-

APPLICATOR DATA		
CRIMP	SIZE	TYPE
WIRE	2.79 mm [1.10]	F
INSUL	4.57 mm [1.80]	F
APPL INSTRUCTIONS 408-8040		

TERMINAL DATA: TE TERMINAL TE CRIMP SPECIFICATION

TERMINAL NAME: REC, FASTON FLAG, AMP .250 SERIES	
WIRE STRIP LENGTH 5.78-5.79 mm [2.27-.228 IN]	INSULATION DIAMETER RANGE Ø3.05-4.30 mm [1.120-.169 IN]

TERMINAL APPLICATION SPECIFICATION (C)- 114-2152

TERMINALS APPLIED			
TE TERMINAL	TE TERMINAL	TE TERMINAL	TE TERMINAL
1742944-1			

WIRE SIZE	CRIMP HEIGHT mm [INCH]	CRIMP HEIGHT REFERENCE SETTING
14 AWG	1.91 +/- 0.05 [0.075 +/- .002]	11.1
16 AWG	1.70 +/- 0.05 [0.067 +/- .002]	13.2
18 AWG	1.55 +/- 0.05 [0.061 +/- .002]	14.7

- 1. RECOMMENDED SPARE PARTS
- 2. GREASE BEARING SURFACES LIGHTLY
- 3. LUBRICATE DAILY PER THE APPLICATOR INSTRUCTION SHEET SUPPLIED WITH THE APPLICATOR.
- 4. APPLICATOR SPECIFIC DATA TO BE ENTERED INTO BLANK MEMORY CHIP AT ASSEMBLY. SEE BELOW FOR PART NUMBER:
 MECHANICAL FEED WITH "SMART APPLICATOR" CONVERSION: 8-2150249-4
 PNEUMATIC FEED WITH "SMART APPLICATOR" CONVERSION: 8-2150249-4
 SERVO FEED WITH "FINE CRIMP HEIGHT ADJUST": 8-2150249-5
 SERVO FEED WITH "NON-CRIMP HEIGHT ADJUST": 8-2150249-6
- 5. ADJUSTMENT OF THE STRIPPER MAY BE REQUIRED WHEN MOVING THE APPLICATOR BETWEEN BENCH AND LEADMAKER APPLICATIONS.
- 6. APPLY PART NUMBER 1-23419-5 LOCTITE TO THREADS OF ITEMS 62 & 242. FOR -6 ONLY APPLY PART NUMBER 1-23419-5 LOCTITE TO THREADS OF ITEMS 37, & 242.
- 7. GREASE THREADS, GROOVE AND O-RING ON ITEMS 35 & 252.
- 8. MAGNET, ITEM 166 MUST BE ORIENTED CORRECTLY IN ORDER TO PROPERLY ACTUATE THE COUNTER.
- 9. CRIMP HEIGHT REFERENCE SETTING WAS THE SETTING USED WHEN THE APPLICATOR WAS QUALIFIED AT THE FACTORY. ADJUSTMENT MAY BE NECESSARY WHEN RUNNING APPLICATOR IN THE FIELD.
- 10. SPARE FEED CAM STORAGE LOCATION REFER TO INSTRUCTION SHEET FOR ADDITIONAL INFORMATION.
- 11. THE RECOMMENDED SET-UP FOR END FEED APPLICATORS IS POST-FEED WITH ITEM 2119653-1. THE APPLICATOR CAN BE CONFIGURED FOR PRE-FEED WITH ITEM 2119652-1 BUT MAY ENCOUNTER PROBLEMS WITH SOME APPLICATIONS. FEED ISSUES OR TERMINAL JAMMING MAY OCCUR IN THE PRE-FEED CONFIGURATION.
- 12. WHEN ASSEMBLING -6 NON-CRIMP HEIGHT ADJUST APPLICATOR USE SHIM PACK 2119957-2 TO ALIGN APPLICATOR'S MAXIMUM WIRE CRIMP HEIGHT AT NORMAL TERMINATOR SHUT HEIGHT

1	1	1	1	1	1	6-1901695-8	GUIDE, LOWER STRIP	265
-	2	2	2	2	2	1-2168083-1	SCR, SKT HD CAP, RoHS, M3 X 6	264
-	1	1	1	1	1	1803086-3	GUIDE, REAR STRIP	263
-	1	1	1	1	1	464452-4	DRAG, STOCK	262
-	1	1	1	1	1	1633168-2	ARM, STOCK DRAG	261
						1-2168083-1	SCR, SKT HD CAP, RoHS, M3 X 6	
						1803086-3	GUIDE, REAR STRIP	
-77	-7	-6	-5	-2	-1	PART NO	DESCRIPTION	ITEM NO

ATLANTIC VERSION
 Shown on sheets 1 of 4 & 2 of 4
 (Pacific version shown on sheets 3 of 4 & 4 of 4)

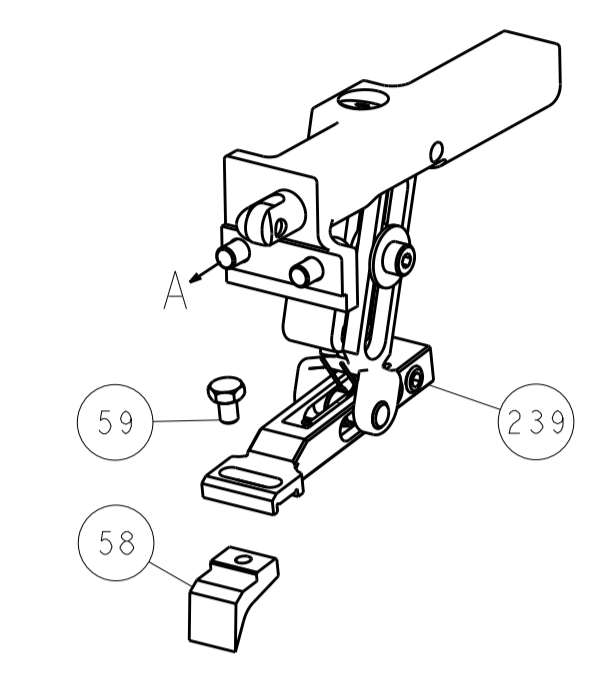
SET UP GAUGE		LOC	DIST	REVISIONS			
2119599-2		A	66	#	DATE	BY	APP'D
				1	19APR2013	SA	CL
				A	06AUG2013	EAO	CL

							464452-4	DRAG, STOCK	
							1633168-2	ARM, STOCK DRAG	
-	-	1	-	-	-		2119957-2	APPLICATOR SHIM PACK	260
-	1	-	1	1	1		8-21084-0	O-RING, .676 ID, .070 DIA. MAT.	252
-	-	-	-	1	-		2119640-1	PUSH ROD, AIR FEED	250
-	-	-	-	1	-		2079988-1	BUSHING, LCH5-12, MISUMI	249
-	-	-	-	1	-		2119641-1	FEED CAM, AIR FEED	248
-	1	-	1	1	1		2119798-1	DETENT PIN	247
-	1	-	1	1	1		1-22279-3	SPRING, COMPRESSION	246
-	-	1	-	-	-		2119759-1	RAM, AMP STYLE, END FEED, NON-ADJUST	245
-	1	1	1	1	1		2119082-9	CAM, SNAIL, INSULATION ADJUSTMENT	244
-	1	1	1	1	1		2079764-1	WASHER, WAVE SPRING, CREST-TO-CREST	243
-	1	1	1	1	1		2119083-1	RETAINER, INSULATION DIAL	242
-	-	2	2	-	-		2168400-7	SHCS, LOW HEAD, RoHS, M5 X 10	240
-	-	-	-	-	1		2119580-1	MECHANICAL FEED ASSEMBLY	239
-	-	-	-	1	-		2063440-1	AIR FEED MODULE	238
-	-	1	1	-	-		2119740-2	TAG, IDENTIFICATION	213
-	-	REFREF	-	-	-		1901697-1	FEED FINGER ASSEMBLY, EF	183
-	-	-	-	2	-		21045-3	RING, RETAIN, EXTERN, 3/16 CRESCENT	172
-	1	1	1	1	1		994969-1	MAGNET, RARE EARTH HIGH ENERGY	166
-	REFREF	REFREF	REFREF	REFREF	REFREF		994970-2	COUNTER, MAGNETIC	164
-	-	-	-	1	-		240638-1	SPRING, FEED FINGER	163
-	-	-	-	1	-		3-23627-7	PIN, RETAIN, GRVD, 3/16 X .854	137
-	-	REFREF	-	-	-		SEE NOTE 4	MEMORY CHIP, PROGRAMMED	135
-	-	1	1	-	-		1633743-1	SERVO FEED LATCH ASM	133
-	1	1	1	1	1		455888-5	SPACER, CRIMPER	82
-	1	1	1	1	1		2119956-2	DOCUMENTATION PACKAGE	71
-	2	2	2	2	2		2-18032-2	SCR, SET, FLT POINT M3 X 10.0	70
-	1	-	-	1	1		2119740-1	TAG, IDENTIFICATION	67
-	2	2	2	2	2		2168078-1	SCREW, DRIVE, RH, RoHS, 2 x .188	66
-	1	-	1	1	1		2119793-1	LIMITER, ADJUSTMENT BOLT	63
-	3	-	3	3	3		992763-5	SCR, SET, SOC, CONE POINT, M3 X 4.0	62
-	1	1	1	1	1		2079383-4	SCR, BHSC, RoHS (M4 X 8)	60
-	-	-	-	-	1		5-18022-5	SCR, HEX HD CAP, M4 X 6.0	59
-	-	-	-	-	1		2063961-1	FEED FINGER	58
-	4	4	4	4	4		2168400-4	SHCS, LOW HEAD, RoHS, M4 X 8	57
-	2	2	2	2	2		2168083-2	SCR, SKT HD CAP, RoHS, M4 X 8.0	56
-	2	2	2	2	2		5018030-2	NUT, HEX, REG, RoHS, M4	55
-	2	2	2	2	2		5018030-1	NUT, HEX, REG, RoHS, M3	54
-	2	2	2	2	2		986965-8	NUT, LOCK, HEX, TORQUE (M4)	53
-	-	-	-	1	-		2119792-1	PAWL, EF, AIR	51
-	-	-	-	1	2		18023-9	SCR, SKT HD CAP M4 X 6.0	49
-	-	-	-	-	1		2119652-1	FEED CAM, PRE FEED	48
-	-	-	-	-	1		2119653-1	FEED CAM, POST FEED	47
-	1	1	1	1	1		2119655-5	APPLICATOR BASIC ASSEMBLY, EF	46
-	1	-	1	1	1		2119369-1	RAM, AMP STYLE, END FEED	44
-	1	1	1	1	1		2079383-7	SCR, BHSC, RoHS (M8 X 25)	41
-	1	-	1	1	1		2119645-1	DISC, NUMBERED FA WIRE ADJUSTMENT	40
-	1	-	1	1	1		2119957-1	APPLICATOR SHIM PACK	39
-	1	1	1	1	1		2119644-3	RAM WASHER, PRECISION	38
-	1	1	1	1	1		2119085-1	FA HEAD, ATLANTIC STYLE	37
-	1	-	1	1	1		2119092-1	BOLT, ADJUSTMENT	35
-	8	8	8	8	8		1-18028-2	WASHER, FLAT, REG M4	33
-	2	2	2	2	2		2168083-9	SCR, SKT HD CAP, RoHS, M4 X 20	31
-	2	2	2	2	2		1-2168083-0	SCR, SKT HD CAP, RoHS, M4 X 10	29
-	1	1	1	1	1		240639-1	STRIPPER (MACHINING)	27
-	2	2	2	2	2		1320906-1	STUD, THREADED	25
-	1	1	1	1	1		1752371-5	PLATE, STRIP GUIDE	24
-	2	2	2	2	2		4-22281-1	SPRING, COMPRESSION	22
-	1	1	1	1	1		1752373-4	DRAG	20
-	2	2	2	2	2		1901259-6	GUIDE, LOWER STRIP	18
-	4	4	4	4	4		1-2079383-1	SCR, BHSC, RoHS (M6 X 12)	17
-	1	1	1	1	1		240644-1	PLATE, REAR SHEAR	11
-	2	2	2	2	2		3-240645-0	SPACER, SHEAR PLATE	10
-	1	1	1	1	1		240642-1	PLATE, FRONT SHEAR	9
-	1	1	1	1	1		2-1803000-8	ANVIL, COMBINATION, END FEED	8
-	1	1	1	1	1		1-240651-0	BLADE, SLUG	7
-	-	-	-	-	-		-	-	6
-	1	1	1	1	1		3-240641-9	SPACER	5
-	1	1	1	1	1		238009-1	BLOCK, FL CRIMPER SPACER	4
-	1	1	1	1	1		2119582-3	CRIMPER, INSULATION F PREMIUM	3
-	1	1	1	1	1		1-455888-1	SPACER, CRIMPER	2
-	1	1	1	1	1		6-456408-6	CRIMPER, WIRE PREMIUM	1
-77	-7	-6	-5	-2	-1	PART NO	DESCRIPTION	ITEM NO	

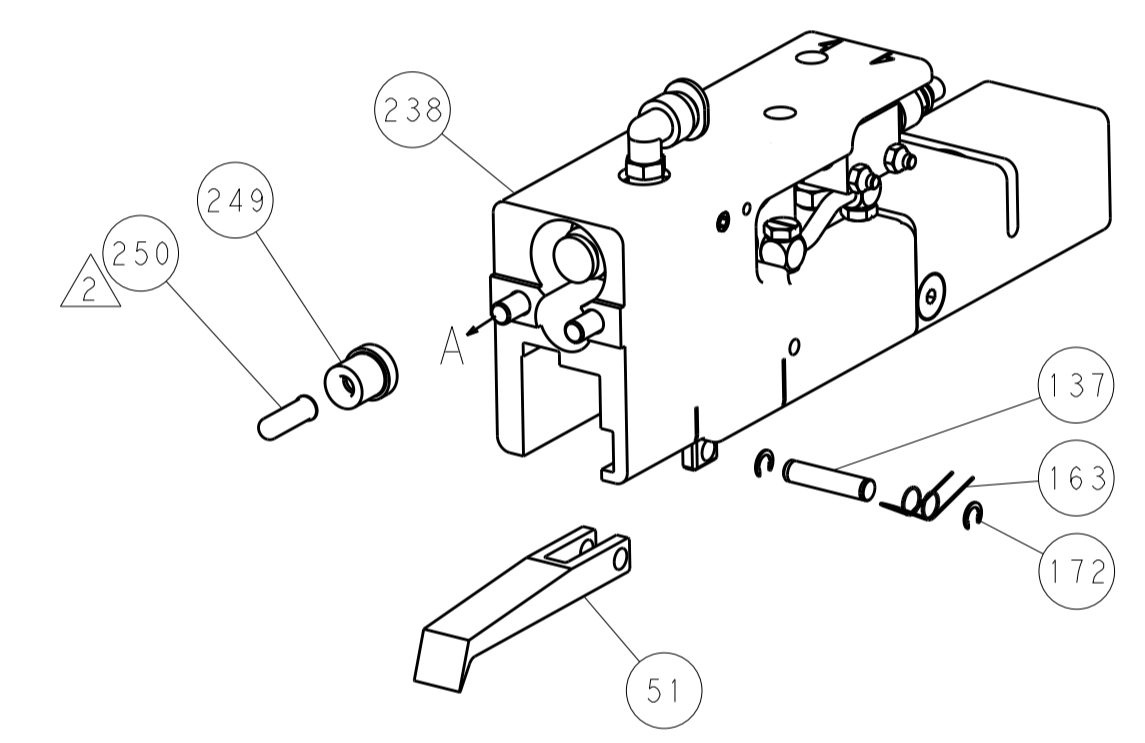
DIMENSIONS: mm		TOLERANCES UNLESS OTHERWISE SPECIFIED:		DWG: EVERALDO O. 19APR2013		CHK: P. BARLETTA 19APR2013		APV: C. LIMA 19APR2013		NAME: Ocean End Feed Applicator	
0 PLC	±	5									
1 PLC	±	0.5									
2 PLC	±	0.13									
3 PLC	±	0.013									
4 PLC	±	0.0041									
ANGLES	±	0.0001									
MATERIAL:		FINISH:		WEIGHT:		SCALE: 1:1		SHEET 1 OF 4		REV: A2	
CUSTOMER ACCESSIBLE PRODUCTION DRAWING											

LOC		DIST		REVISIONS			
A	66	P	LTM	DESCRIPTION	DATE	OWN	APVD
		-	-	SEE SHEET 1	-	-	-

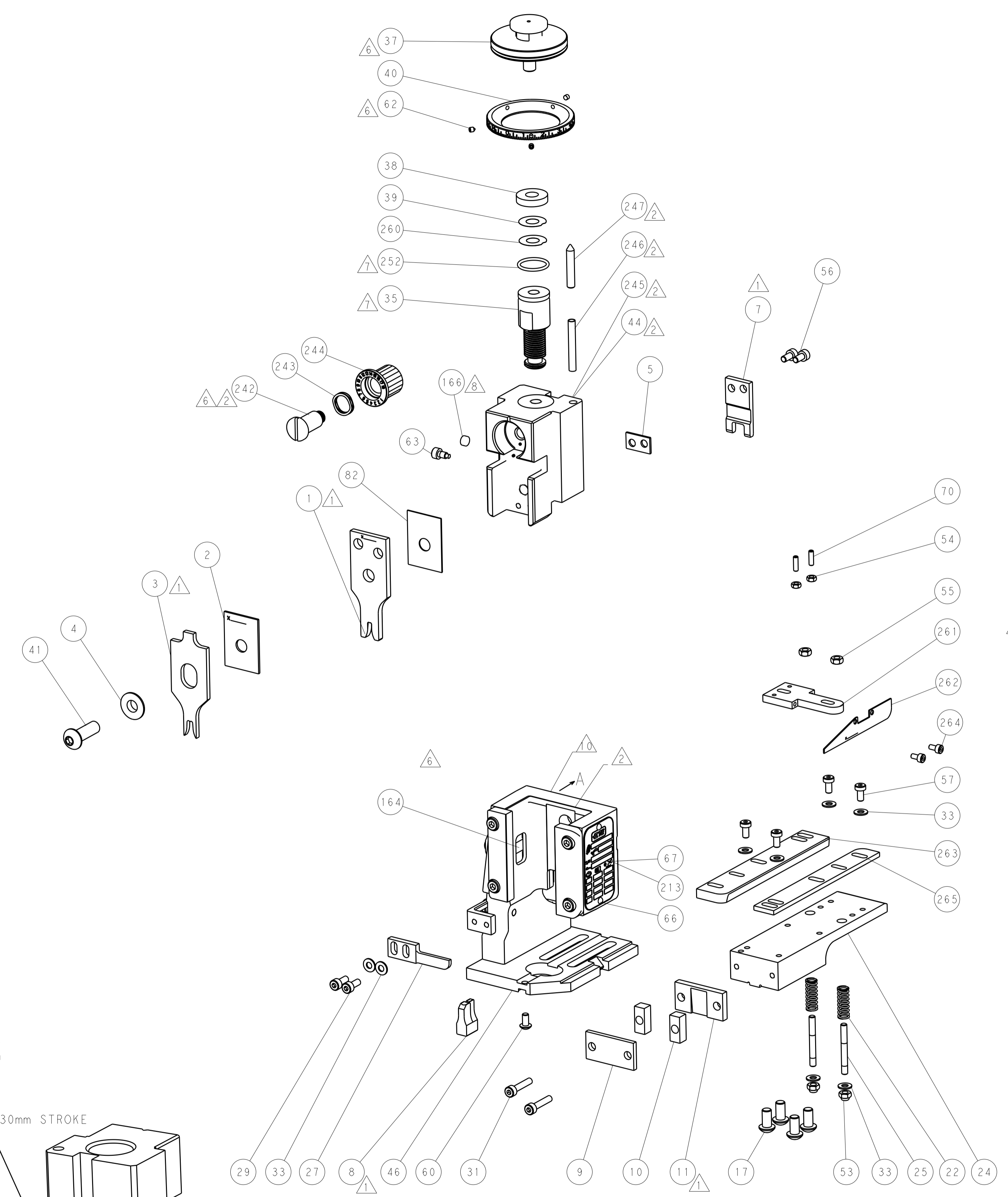
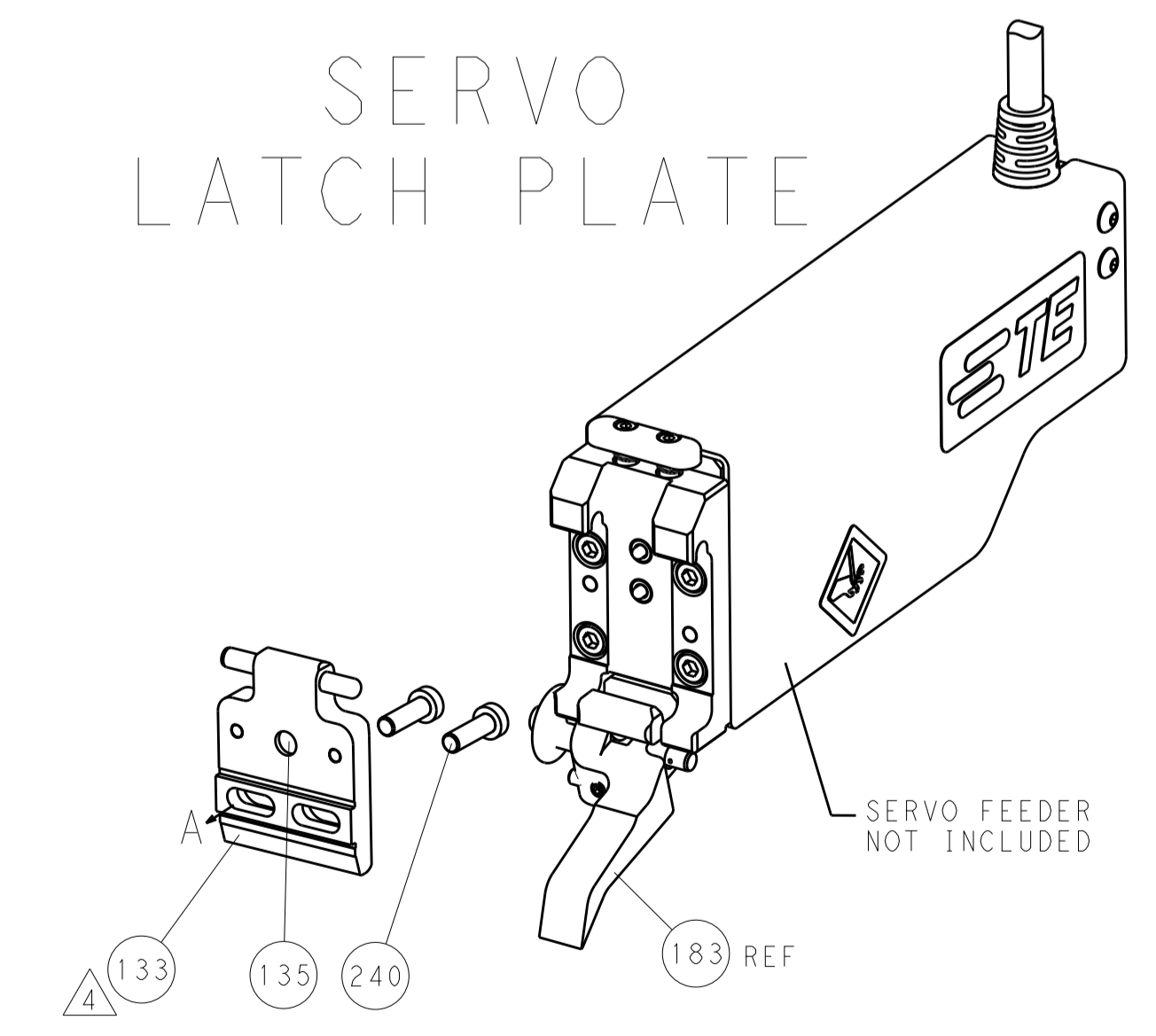
FEED TYPE MECHANICAL



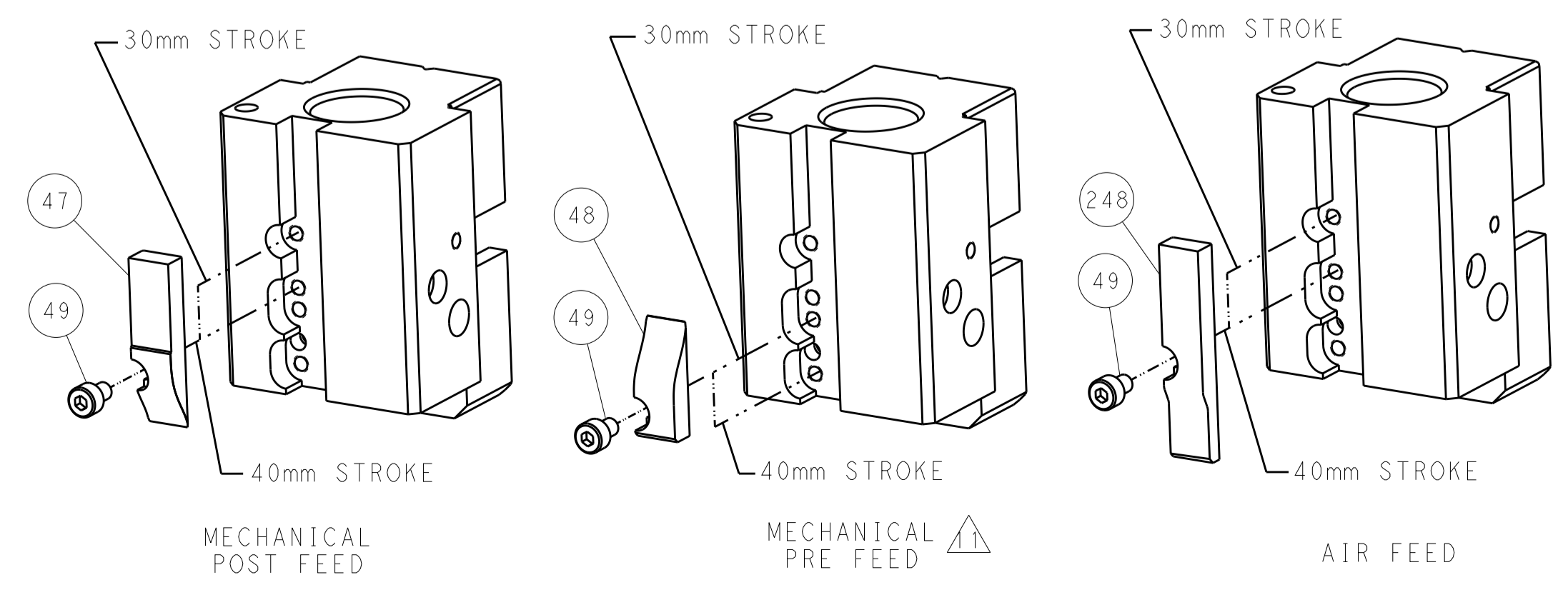
PNEUMATIC



SERVO LATCH PLATE



CAM POSITIONS



ATLANTIC VERSION
 Shown on sheets 1 of 4 & 2 of 4
 (Pacific version shown on sheets 3 of 4 & 4 of 4)

DIMENSIONS: mm 		TOLERANCES UNLESS OTHERWISE SPECIFIED: 0 PLC ±.5 1 PLC ±0.5 2 PLC ±0.13 3 PLC ±0.013 4 PLC ±0.001 ANGLES ±.1		DWN: EVERALDO.O 19APR2013 CHK: P. BARLETTA 19APR2013 APVD: C. LIMA 19APR2013		TE Connectivity Harrisburg, PA 17105-3608	
MATERIAL:		FINISH:		NAME: Ocean End Feed Applicator		SIZE: A1 CAGE CODE: 00779 DRAWING NO: C=2150249	
CUSTOMER ACCESSIBLE PRODUCTION DRAWING				SCALE: 1:1		SHEET 2 OF 4 REV A2	

PACIFIC VERSION TERMINATOR INTERFACE ADAPTER	PART NUMBER	REVISION	DESCRIPTION	FEED TYPE	APPLICATOR STYLE CONVERSION CHART						
					CONVERT TO	PART NUMBERS REQUIRED					
	2-2150249-1	A	FINE CRIMP HEIGHT ADJUST	MECHANICAL	PNEUMATIC FEED	2119950-1	2119792-1	-	2119641-2	-	2063440-1
					SERVO LATCH PLATE	2119951-1	1901697-1	8-2150249-5	-	-	2168400-7 (QUANTITY 2)
					SMART APPLICATOR	2161326-1	-	8-2150249-4	-	-	-
	2-2150249-2	A	FINE CRIMP HEIGHT ADJUST	PNEUMATIC	MECHANICAL FEED	2119949-1	2063961-1	5-18022-5	2119653-2	-	-
					SERVO LATCH PLATE	2119951-1	1901697-1	8-2150249-5	-	-	2168400-7 (QUANTITY 2)
					SMART APPLICATOR	2161326-1	-	8-2150249-4	-	-	-
	2-2150249-5	A	FINE CRIMP HEIGHT ADJUST	SERVO LATCH PLATE	MECHANICAL FEED	2119949-1	2063961-1	5-18022-5	2119653-2	-	-
					PNEUMATIC FEED	2119950-1	2119792-1	-	2119641-2	-	2063440-1
	2-2150249-7	A	FINE CRIMP HEIGHT ADJUST	NONE	-	-	-	-	-	-	-
	7-2150249-7	A	CRIMP TOOLING KIT	-	-	-	-	-	-	-	-

APPLICATOR DATA		
CRIMP	SIZE	TYPE
WIRE	2.79 mm [.110]	F
INSUL	4.57 mm [.180]	F
APPL INSTRUCTIONS 408-8040		

TERMINAL DATA: TE TERMINAL		TE CRIMP SPECIFICATION
TERMINAL NAME: REC, FASTON FLAG, AMP .250 SERIES		
WIRE STRIP LENGTH		INSULATION DIAMETER RANGE
5.78-5.79 mm [.227-.228 IN]		3.05-4.30 mm [.120-.169 IN]
TERMINAL APPLICATION SPECIFICATION	(C)- 114-2152	-
TERMINALS APPLIED		
TE TERMINAL	TE TERMINAL	TE TERMINAL
1742944-1		

WIRE SIZE	CRIMP HEIGHT mm [INCH]	CRIMP HEIGHT REFERENCE SETTING
14 AWG	1.91 +/- 0.05 [.075 +/- .002]	11.1
16 AWG	1.70 +/- 0.05 [.067 +/- .002]	13.2
18 AWG	1.55 +/- 0.05 [.061 +/- .002]	14.7

- RECOMMENDED SPARE PARTS
- GREASE BEARING SURFACES LIGHTLY
- 3. LUBRICATE DAILY PER THE APPLICATOR INSTRUCTION SHEET SUPPLIED WITH THE APPLICATOR.
- APPLICATOR SPECIFIC DATA TO BE ENTERED INTO BLANK MEMORY CHIP AT ASSEMBLY. SEE BELOW FOR PART NUMBER:
 MECHANICAL FEED WITH "SMART APPLICATOR" CONVERSION: 8-2150249-4
 PNEUMATIC FEED WITH "SMART APPLICATOR" CONVERSION: 8-2150249-4
 SERVO FEED WITH "FINE CRIMP HEIGHT ADJUST": 8-2150249-5
- 5. ADJUSTMENT OF THE STRIPPER MAY BE REQUIRED WHEN MOVING THE APPLICATOR BETWEEN BENCH AND LEADMAKER APPLICATIONS.
- APPLY PART NUMBER 1-23419-5 LOCTITE TO THREADS OF ITEMS 62 & 242.
- GREASE THREADS, GROOVE AND O-RING ON ITEMS 139 & 153.
- MAGNET, ITEM 166 MUST BE ORIENTED CORRECTLY IN ORDER TO PROPERLY ACTUATE THE COUNTER.
- CRIMP HEIGHT REFERENCE SETTING WAS THE SETTING USED WHEN THE APPLICATOR WAS QUALIFIED AT THE FACTORY. ADJUSTMENT MAY BE NECESSARY WHEN RUNNING APPLICATOR IN THE FIELD.
- SPARE FEED CAM STORAGE LOCATION REFER TO INSTRUCTION SHEET FOR ADDITIONAL INFORMATION.
- THE RECOMMENDED SET-UP FOR END FEED APPLICATORS IS POST-FEED WITH ITEM 2119653-1. THE APPLICATOR CAN BE CONFIGURED FOR PRE-FEED WITH ITEM 2119652-1 BUT MAY ENCOUNTER PROBLEMS WITH SOME APPLICATIONS. FEED ISSUES OR TERMINAL JAMMING MAY OCCUR IN THE PRE-FEED CONFIGURATION.

***WARNING**
 ON INSTALLATION, SET WIRE DISC, ITEM 40 TO LARGEST WIRE SIZE SETTING. USE OF SETTINGS BELOW MINIMUM REQUIRED CRIMP HEIGHT SETTING WILL CAUSE DAMAGE TO CRIMP TOOLING.

-	1	1	1	1	1	1	6-1901695-8	GUIDE, LOWER STRIP	265					
-	2	2	2	2	2	2	1-2168083-1	SCR, SKT HD CAP, RoHS, M3X6	264					
1	1	1	1	1	1	1	1803086-3	GUIDE, REAR STRIP	263					
-	1	1	1	1	1	1	464452-4	DRAG, STOCK	262					
1	1	1	1	1	1	1	1633168-2	ARM, STOCK DRAG	261					
-	77	-	27	-	26	-	25	-	22	-	21	PART NO	DESCRIPTION	ITEM NO

PACIFIC VERSION
 Shown on sheets 3 of 4 & 4 of 4
 (Atlantic version shown on sheets 1 of 4 & 2 of 4)

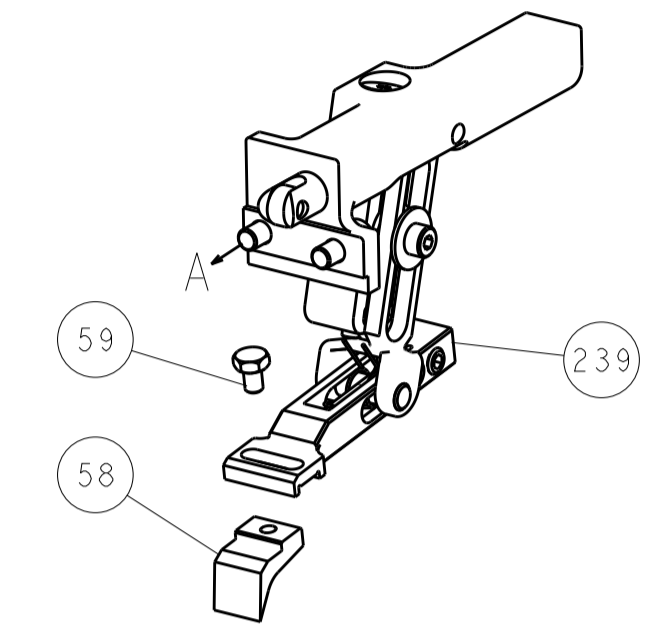
SET UP GAUGE	LOC	DIST	REVISIONS			
2119599-2	A	66	REV	DATE	BY	APPV
			-	SEE SHEET 1	-	-

					1-2168083-1	SCR, SKT HD CAP, RoHS, M3 X 6								
					1803086-3	GUIDE, REAR STRIP								
					464452-4	DRAG, STOCK								
					1633168-2	ARM, STOCK DRAG								
-	1	1	1	1	2119782-1	FINE ADJUST HEAD ASM, PACIFIC STYLE	251							
-	-	-	-	-	2119640-1	PUSH ROD, AIR FEED	250							
-	-	-	-	-	2079988-1	BUSHING, LCH5-12, MISUMI	249							
-	1	1	1	1	1-22279-3	SPRING, COMPRESSION	246							
-	1	1	1	1	2119082-9	CAM, SNAIL, INSULATION ADJUSTMENT	244							
-	1	1	1	1	2079764-1	WASHER, WAVE SPRING, CREST-TO-CREST	243							
-	1	1	1	1	2119083-1	RETAINER, INSULATION DIAL	242							
-	-	2	-	-	2168400-7	SHCS, LOW HEAD, RoHS, M5 X 10	240							
-	-	-	-	1	2119580-1	MECHANICAL FEED ASSEMBLY	239							
-	-	-	-	1	2063440-1	AIR FEED MODULE	238							
-	-	1	-	-	2119740-2	TAG, IDENTIFICATION	213							
-	4	4	4	4	2079383-9	SCR, BHSC, RoHS (M6 X 20)	186							
-	-	REF	-	-	1901697-1	FEED FINGER ASSEMBLY, EF	183							
-	-	-	2	-	21045-3	RING, RETAIN, EXTERN, 3/16 CRESCENT	172							
-	1	1	1	1	994969-1	MAGNET, RARE EARTH HIGH ENERGY	166							
-	REF	REF	REF	REF	994970-2	COUNTER, MAGNETIC	164							
-	-	-	1	-	240638-1	SPRING, FEED FINGER	163							
-	1	1	1	1	8-21084-1	O-RING, .801 ID, .070 DIA. MAT.	153							
-	-	-	1	-	2119641-2	FEED CAM, AIR FEED	152							
-	1	1	1	1	2119798-2	DETENT PIN	145							
-	1	1	1	1	2079383-8	SCR, BHSC, RoHS (M4 X 16)	144							
-	-	-	1	-	2119653-2	FEED CAM, POST FEED	142							
-	1	1	1	1	2119655-6	APPLICATOR BASIC ASSEMBLY, EF	141							
-	1	1	1	1	2119651-1	RAM, ASIAN STYLE, END FEED	140							
-	1	1	1	1	2119092-2	BOLT, ADJUSTMENT	139							
-	-	-	1	-	3-23627-7	PIN, RETAIN, GRVD, 3/16 X .854	137							
-	-	REF	-	-	SEE NOTE 4	MEMORY CHIP, PROGRAMMED	135							
-	-	1	-	-	1633743-1	SERVO FEED LATCH ASM	133							
-	1	1	1	1	455888-5	SPACER, CRIMPER	82							
-	1	1	1	1	2119956-2	DOCUMENTATION PACKAGE	71							
-	2	2	2	2	2-18032-2	SCR, SET, FLT POINT M3 X 10.0	70							
-	1	-	1	1	2119740-1	TAG, IDENTIFICATION	67							
-	2	2	2	2	2168078-1	SCREW, DRIVE, RH, RoHS, 2 x .188	66							
-	1	1	1	1	2119793-1	LIMITER, ADJUSTMENT BOLT	63							
-	3	3	3	3	992763-5	SCR, SET, SOC, CONE POINT, M3 x 4.0	62							
-	-	-	-	1	5-18022-5	SCR, HEX HD CAP, M4 X 6.0	59							
-	-	-	-	1	2063961-1	FEED FINGER	58							
-	4	4	4	4	2168400-4	SHCS, LOW HEAD, RoHS, M4 X 8	57							
-	2	2	2	2	2168083-2	SCR, SKT HD CAP, RoHS, M4 X 8.0	56							
-	2	2	2	2	5018030-2	NUT, HEX, REG, RoHS, M4	55							
-	2	2	2	2	5018030-1	NUT, HEX, REG, RoHS, M3	54							
-	2	2	2	2	986965-8	NUT, LOCK, HEX, TORQUE (M4)	53							
-	-	-	1	-	2119792-1	PAWL, EF, AIR	51							
-	-	-	1	2	18023-9	SCR, SKT HD CAP M4 X 6.0	49							
-	-	-	-	1	2119652-1	FEED CAM, PRE FEED	48							
-	1	1	1	1	2079383-7	SCR, BHSC, RoHS (M8 X 25)	41							
-	1	1	1	1	2119645-1	DISC, NUMBERED FA WIRE ADJUSTMENT	40							
-	1	1	1	1	2119957-1	APPLICATOR SHIM PACK	39							
-	1	1	1	1	2119644-3	RAM WASHER, PRECISION	38							
-	8	8	8	8	1-18028-2	WASHER, FLAT, REG M4	33							
-	2	2	2	2	2168083-9	SCR, SKT HD CAP, RoHS, M4 X 20	31							
-	2	2	2	2	1-2168083-0	SCR, SKT HD CAP, RoHS, M4 X 10	29							
-	1	1	1	1	240639-1	STRIPPER (MACHINING)	27							
-	2	2	2	2	1320906-1	STUD, THREADED	25							
-	1	1	1	1	1752371-5	PLATE, STRIP GUIDE	24							
-	2	2	2	2	4-22281-1	SPRING, COMPRESSION	22							
-	1	1	1	1	1752373-4	DRAG	20							
-	2	2	2	2	1901259-6	GUIDE, LOWER STRIP	18							
-	1	1	1	1	240644-1	PLATE, REAR SHEAR	11							
-	2	2	2	2	3-240645-0	SPACER, SHEAR PLATE	10							
-	1	1	1	1	240642-1	PLATE, FRONT SHEAR	9							
-	1	1	1	1	2-1803000-8	ANVIL, COMBINATION, END FEED	8							
-	1	1	1	1	1-240651-0	BLADE, SLUG	7							
-	-	-	-	-	-	-	6							
-	1	1	1	1	3-240641-9	SPACER	5							
-	1	1	1	1	238009-1	BLOCK, FL CRIMPER SPACER	4							
-	1	1	1	1	2119582-3	CRIMPER, INSULATION F PREMIUM	3							
-	1	1	1	1	1-455888-1	SPACER, CRIMPER	2							
-	1	1	1	1	6-456408-6	CRIMPER, WIRE PREMIUM	1							
-	77	-	27	-	26	-	25	-	22	-	21	PART NO	DESCRIPTION	ITEM NO

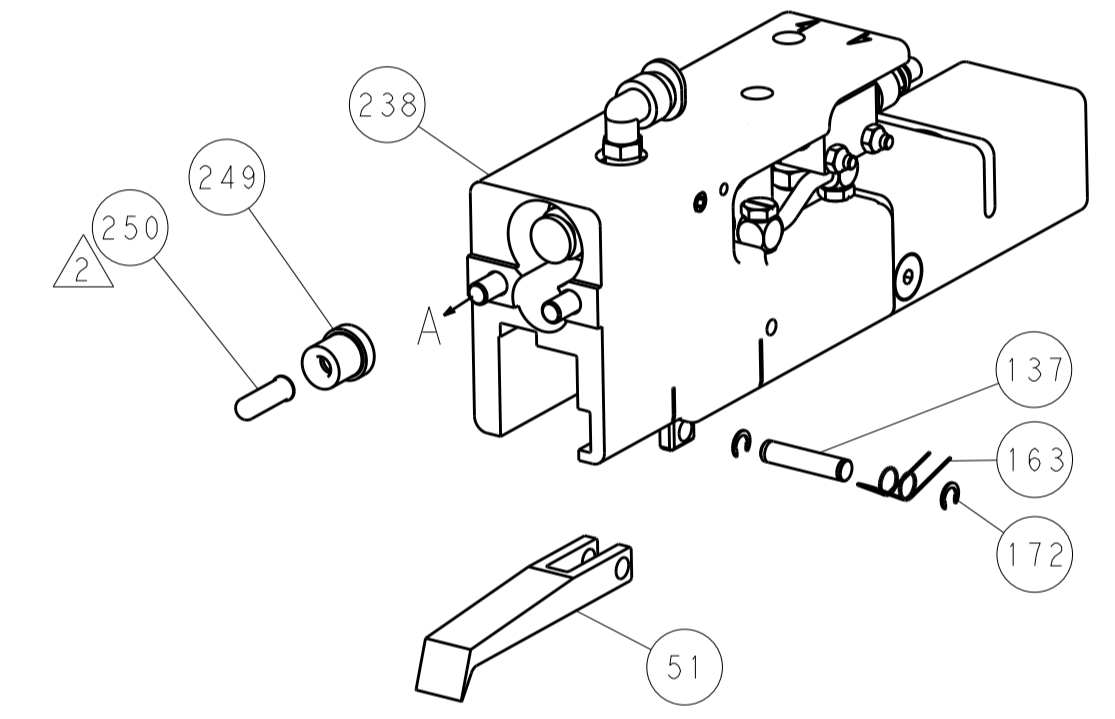
DIMENSIONS:		TOLERANCES UNLESS OTHERWISE SPECIFIED:		DWN	
mm	0 PLC ±.5	1 PLC ±.3	2 PLC ±.13	3 PLC ±.013	4 PLC ±.0001
	ANGLES ±.0001				
MATERIAL:	FINISH:	WEIGHT:	SCALE:	SHEET:	REV:
			1:1	3 OF 4	A2

LOC		DIST		REVISIONS			
A	66	P	LTM	DESCRIPTION	DATE	OWN	APVD
		-		SEE SHEET 1			

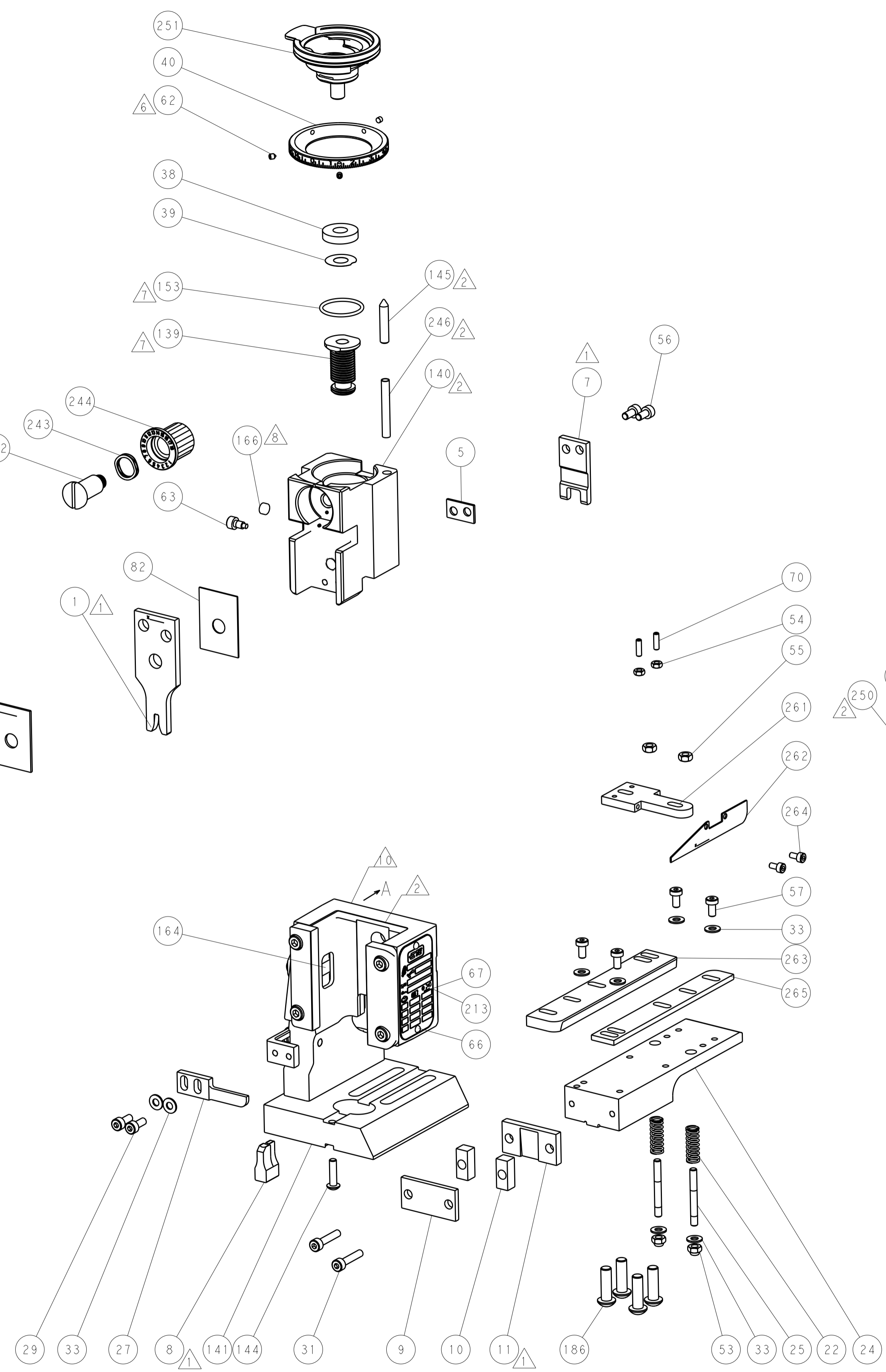
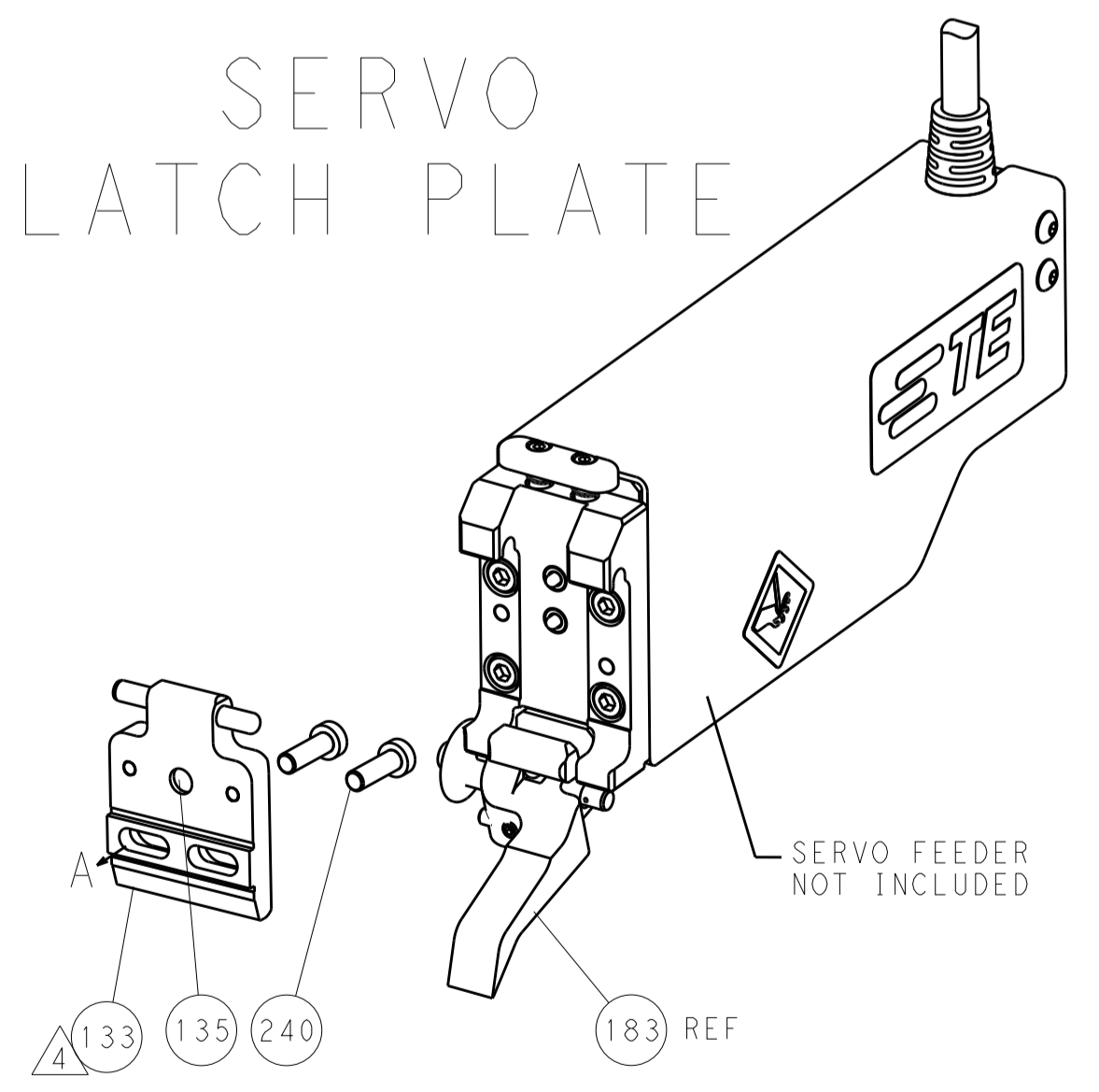
FEED TYPE MECHANICAL



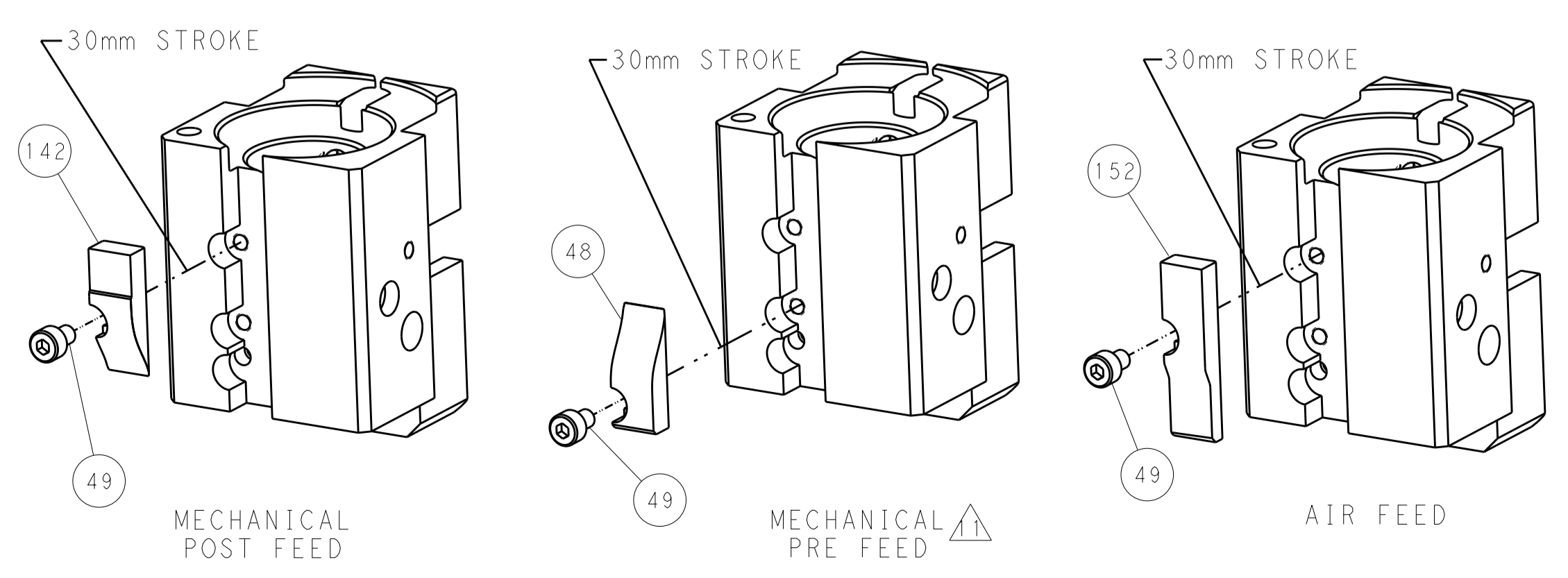
PNEUMATIC



SERVO LATCH PLATE



CAM POSITIONS



PACIFIC VERSION
 Shown on sheets 3 of 4 & 4 of 4
 (Atlantic version shown on sheets 1 of 4 & 2 of 4)

DIMENSIONS:		TOLERANCES UNLESS OTHERWISE SPECIFIED:		DWN: EVERALDO O. 19APR2013		CHK: P. BARLETTA 19APR2013		APVD: C. LIMA 19APR2013		NAME: Ocean End Feed Applier	
mm	0 PLC ±0.5	1 PLC ±0.13	2 PLC ±0.013	3 PLC ±0.0013	4 PLC ±0.00013	ANGLES	FINISH	WEIGHT	SCALE	SHEET	OF
MATERIAL									1:1	4	4
CUSTOMER ACCESSIBLE PRODUCTION DRAWING								SCALE		REV	
								A1		A2	