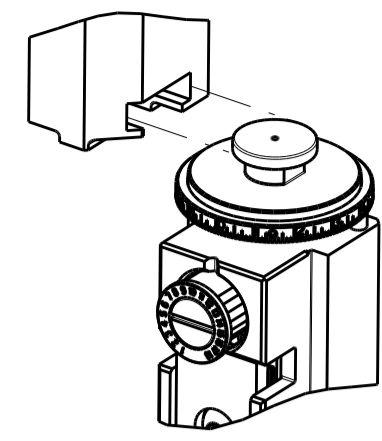


| PART NUMBER | REVISION | DESCRIPTION                      | FEED TYPE  |
|-------------|----------|----------------------------------|------------|
| 2150045-1   | B        | FINE CRIMP HEIGHT ADJUST         | MECHANICAL |
| 2150045-2   | B        | FINE CRIMP HEIGHT ADJUST         | PNEUMATIC  |
| 7-2150045-1 | B        | MECHANICAL AND CRIMP TOOLING KIT | MECHANICAL |
| 7-2150045-2 | B        | PNEUMATIC AND CRIMP TOOLING KIT  | PNEUMATIC  |
| 7-2150045-7 | A        | CRIMP TOOLING KIT                | -          |

ATLANTIC VERSION TERMINATOR INTERFACE ADAPTER



| APPLICATOR DATA                |                |      |
|--------------------------------|----------------|------|
| CRIMP                          | SIZE           | TYPE |
| WIRE                           | 2.54 mm [.100] | F    |
| INSUL                          | 3.05 mm [.120] | OV   |
| APPL INSTRUCTIONS<br>408-35043 |                |      |

| TERMINAL DATA: TE TERMINAL TE CRIMP SPECIFICATION |                              |             |             |
|---|------------------------------|-------------|-------------|
| TERMINAL NAME: RING TERMINAL                      |                              |             |             |
| WIRE STRIP LENGTH                                 | INSULATION DIAMETER RANGE    |             |             |
| 5.56-6.00 mm [.219-.236 IN]                       | ∅1.40-2.10 mm [.055-.083 IN] |             |             |
| TERMINAL APPLICATION SPECIFICATION                | 114-2084                     | -           | -           |
| TERMINALS APPLIED                                 |                              |             |             |
| TE TERMINAL                                       | TE TERMINAL                  | TE TERMINAL | TE TERMINAL |
| 346100-2  | 346100-3                     |             |             |

| WIRE SIZE | CRIMP HEIGHT mm [INCH]     | CRIMP HEIGHT REFERENCE SETTING |
|-----------|----------------------------|--------------------------------|
| 1.00mm2   | 1.89+/-0.05 [.074+/-0.002] | 9.6                            |
| 0.75mm2   | 1.82+/-0.05 [.072+/-0.002] | 10.1                           |
| 0.50mm2   | 1.75+/-0.05 [.069+/-0.002] | 10.7                           |

- 1 RECOMMENDED SPARE PARTS
- 2 REFER TO SUPPLIED INSTRUCTION SHEET FOR CLEANING, LUBRICATION AND STORAGE OF APPLICATOR.
- 3 APPLY PART NUMBER 2-23419-6 LOCTITE TO THREADS OF ITEM 242.
- 4 CRIMP HEIGHT REFERENCE SETTING WAS THE SETTING USED WHEN THE APPLICATOR WAS QUALIFIED AT THE FACTORY. ADJUSTMENT MAY BE NECESSARY WHEN RUNNING APPLICATOR IN THE FIELD.
- 5. UNLESS SPECIFIED OTHERWISE TORQUE VALUES SHALL BE USED PER DOCUMENT, 101-35000.

**\*WARNING**  
ON INSTALLATION, SET WIRE DISC TO CRIMP HEIGHT REFERENCE SETTING FOR LARGEST WIRE SIZE. CRIMP HEIGHT REFERENCE SETTINGS GREATER THAN THE VALUE SHOWN MAY CAUSE DAMAGE TO THE CRIMP TOOLING, REFER TO THE INSTRUCTION SHEET FOR PROPER SETUP AND ADJUSTMENTS.

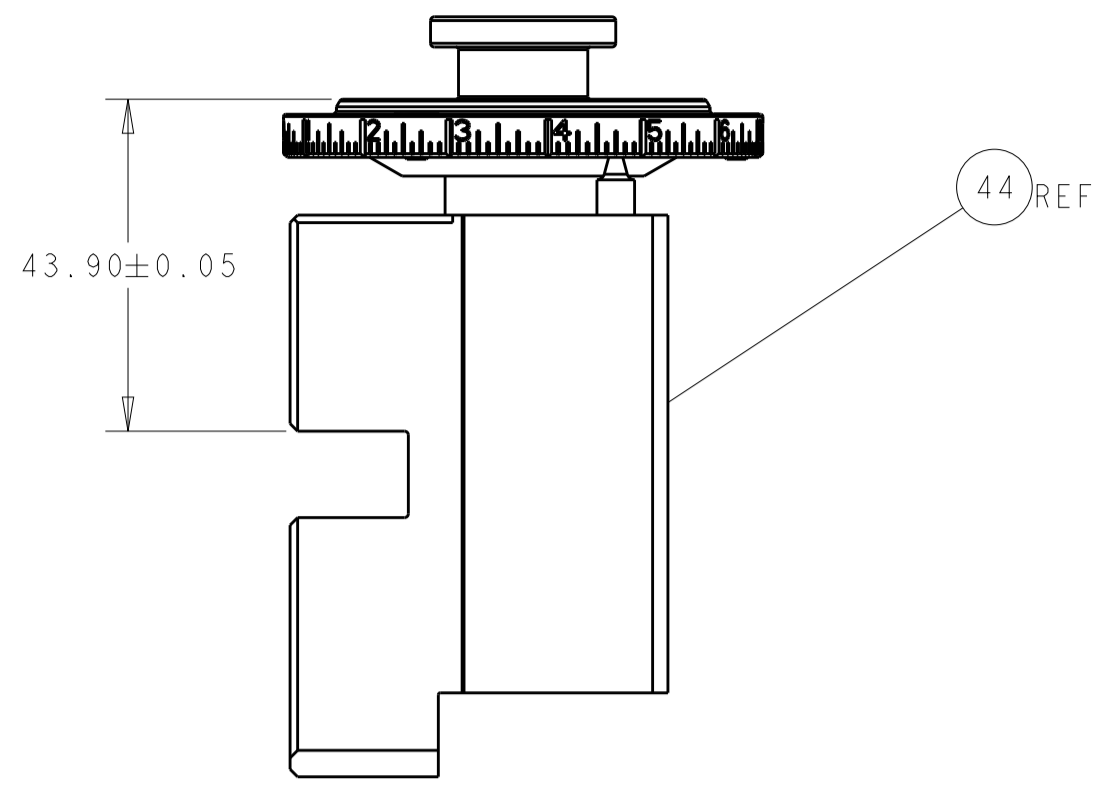
**ATLANTIC VERSION**  
Shown on sheets 1 of 4 & 2 of 4  
(Pacific version shown on sheets 3 of 4 & 4 of 4)

| LOC | DIST | REVISIONS |     |               |           |     |      |
|-----|------|-----------|-----|---------------|-----------|-----|------|
|     |      | P         | LTN | DESCRIPTION   | DATE      | DWN | APVD |
| A   | 66   | 1         |     | DEVELOPMENT   | 30JUN2012 | XZ  | SX   |
|     |      | 2         |     | CORRECT       | 26APR2013 | CC  | UG   |
|     |      | A         |     | RELEASED      | 28AUG2013 | BH  | TE   |
|     |      | B         |     | ECR-19-019272 | 11DEC2019 | FZ  | TE   |

|   |     |     |     |     |             |                                     |             |         |
|---|-----|-----|-----|-----|-------------|-------------------------------------|-------------|---------|
| - | 1   | -   | 1   | -   | 2119641-1   | FEED CAM, AIR FEED                  | 248         |         |
| - | 1   | 1   | 1   | 1   | 2119082-9   | CAM, SNAIL, INSULATION ADJUSTMENT   | 244         |         |
| - | 1   | 1   | 1   | 1   | 2079764-1   | WASHER, WAVE SPRING, CREST-TO-CREST | 243         |         |
| - | 1   | 1   | 1   | 1   | 2119083-1   | RETAINER, INSULATION DIAL           | 242         |         |
| - | -   | 1   | -   | 1   | 2119580-1   | MECHANICAL FEED ASSEMBLY            | 239         |         |
| - | 1   | -   | 1   | -   | 2844940-4   | AIR FEED MODULE                     | 238         |         |
| - | 1   | 1   | 1   | 1   | 1-18028-0   | WASHER, FLAT, REG M8                | 192         |         |
| - | REF | REF | REF | REF | 994970-2    | COUNTER, MAGNETIC                   | 164         |         |
| - | 1   | 1   | 1   | 1   | 455888-4    | SPACER, CRIMPER                     | 82          |         |
| - | 1   | 1   | 1   | 1   | 1803607-4   | DOCUMENTATION PACKAGE               | 71          |         |
| - | 2   | 2   | 2   | 2   | 2-18032-2   | SCR, SET, FLT PNT, M3 X 10.0        | 70          |         |
| - | 1   | 1   | 1   | 1   | 2119740-1   | TAG, IDENTIFICATION                 | 67          |         |
| - | 2   | 2   | 2   | 2   | 2168078-1   | SCREW, DRIVE, RH, RoHS, 2 x .188    | 66          |         |
| - | 1   | 1   | 1   | 1   | 2168083-2   | SCR, SKT HD CAP, RoHS, M4 X 8.0     | 60          |         |
| - | 1   | 1   | 1   | 1   | 5-18022-5   | SCR, HEX HD CAP, M4 X 6.0           | 59          |         |
| - | -   | 1   | -   | 1   | 2063961-1   | FEED FINGER                         | 58          |         |
| - | 4   | 4   | 4   | 4   | 2168400-4   | SHCS, LOW HEAD, RoHS, M4 X 8        | 57          |         |
| - | 2   | 2   | 2   | 2   | 2168083-3   | SCR, SKT HD CAP, RoHS, M4 X 12.0    | 56          |         |
| - | 2   | 2   | 2   | 2   | 5018030-1   | NUT, HEX, REG, RoHS, M3             | 54          |         |
| - | 2   | 2   | 2   | 2   | 986965-8    | NUT, LOCK, HEX, TORQUE (M4)         | 53          |         |
| - | 1   | -   | 1   | -   | 2063961-9   | FEED FINGER                         | 51          |         |
| - | 1   | 2   | 1   | 2   | 18023-9     | SCR, SKT HD CAP M4 X 6.0            | 49          |         |
| - | -   | 1   | -   | 1   | 2119652-1   | FEED CAM, PRE FEED                  | 48          |         |
| - | -   | 1   | -   | 1   | 2119653-1   | FEED CAM, POST FEED                 | 47          |         |
| - | 1   | 1   | 1   | 1   | 2119655-5   | APPLICATOR BASIC ASSEMBLY, EF       | 46          |         |
| - | 1   | 1   | 1   | 1   | 1803517-1   | RAM ASSEMBLY, EF ATLANTIC           | 44          |         |
| - | 1   | 1   | 1   | 1   | 1803602-1   | SCR, BHSC, RoHS (M8 X 25)           | 41          |         |
| - | 8   | 8   | 8   | 8   | 1-18028-2   | WASHER, FLAT, REG M4                | 33          |         |
| - | 2   | 2   | 2   | 2   | 2168083-9   | SCR, SKT HD CAP, RoHS, M4 X 20      | 31          |         |
| - | 2   | 2   | 2   | 2   | 2168083-2   | SCR, SKT HD CAP, RoHS, M4 X 8.0     | 29          |         |
| - | 1   | 1   | 1   | 1   | 240639-1    | STRIPPER (MACHINING)                | 27          |         |
| - | 2   | 2   | 2   | 2   | 1-2168083-5 | SCR, SKT HD CAP, RoHS, M4 X 30      | 25          |         |
| - | 1   | 1   | 1   | 1   | 1752371-5   | PLATE, STRIP GUIDE                  | 24          |         |
| - | 2   | 2   | 2   | 2   | 2-22281-3   | SPRING, COMPRESSION                 | 22          |         |
| - | 1   | 1   | 1   | 1   | 1803292-4   | DRAG                                | 20          |         |
| - | 1   | 1   | 1   | 1   | 1901696-9   | STRIP GUIDE, REAR                   | 19          |         |
| - | 1   | 1   | 1   | 1   | 1901695-9   | STRIP GUIDE, FRONT                  | 18          |         |
| - | 4   | 4   | 4   | 4   | 1-2079383-1 | SCR, BHSC, RoHS (M6 X 12)           | 17          |         |
| - | 1   | 1   | 1   | 1   | 240644-1    | PLATE, REAR SHEAR                   | 11          |         |
| - | -   | -   | -   | -   | -           | -                                   | 10          |         |
| - | 1   | 1   | 1   | 1   | 690482-5    | PLATE, FRONT SHEAR                  | 9           |         |
| - | 1   | 2   | 2   | 1   | 1803000-4   | ANVIL, COMBINATION, END FEED        | 8           |         |
| - | 1   | 1   | 1   | 1   | 2217206-7   | BLADE, SLUG                         | 7           |         |
| - | 1   | 1   | 1   | 1   | 1-240641-5  | SPACER                              | 5           |         |
| - | 1   | 1   | 1   | 1   | 238011-2    | BLOCK, CRIMPER SPACER               | 4           |         |
| - | 1   | 2   | 2   | 1   | 1-2119785-9 | CRIMPER, INSULATION OVERLAP PREMIUM | 3           |         |
| - | 1   | 1   | 1   | 1   | 1-455888-5  | SPACER, CRIMPER                     | 2           |         |
| - | 1   | 2   | 2   | 1   | 1-456407-0  | CRIMPER, WIRE PREMIUM               | 1           |         |
| - | 77  | 72  | 71  | 2   | -1          | PART NO                             | DESCRIPTION | ITEM NO |

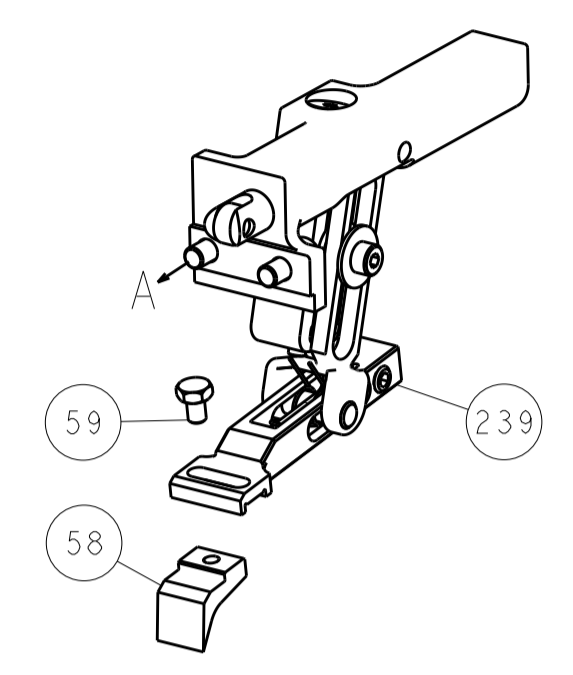
| DIMENSIONS:                            |         | TOLERANCES UNLESS OTHERWISE SPECIFIED: |          | DWN          |           | TE Connectivity           |            |
|--|---------|--|----------|--------------|-----------|---------------------------|------------|
| mm                                     | 0 PLC ± | 1 PLC ±                                | 2 PLC ±  | X ZHAO       | 30JUN2012 | Harrisburg, PA 17105-3608 |            |
|  | 3 PLC ± | 4 PLC ±                                | ANGLES ± | T. ELBIN     | 30JUN2012 | Ocean End Feed Applicator |            |
| MATERIAL                               | FINISH  | WEIGHT                                 | SCALE    | APVD         | SIZE      | CAGE CODE                 | DRAWING NO |
|  |         |  | 1:1      | S X I        | A1        | 00779                     | 2150045    |
| Customer Accessible Production Drawing |         |  |          | SHEET 1 OF 4 |           | REV B                     |            |

| LOC       | DIST | REV | DATE        | BY   | APPV |
|-----------|------|-----|-------------|------|------|
| A         | 66   |     |             |      |      |
| REVISIONS |      |     | DESCRIPTION | DATE | BY   |
|           |      |     | SEE SHEET 1 |      |      |

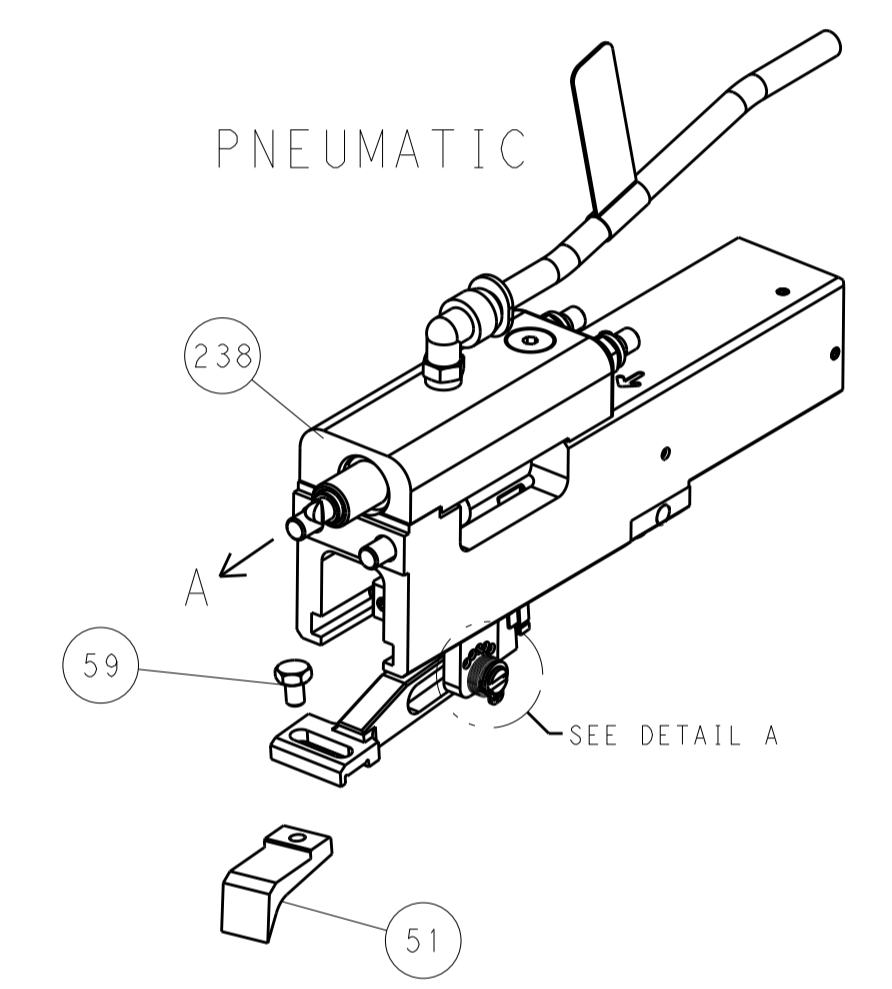


RAM SET-UP

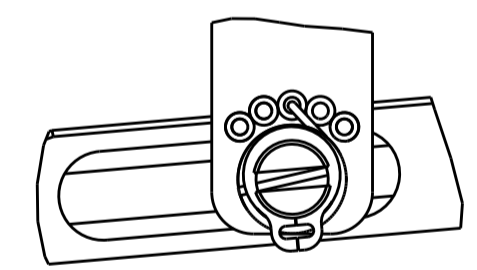
# FEED TYPE MECHANICAL



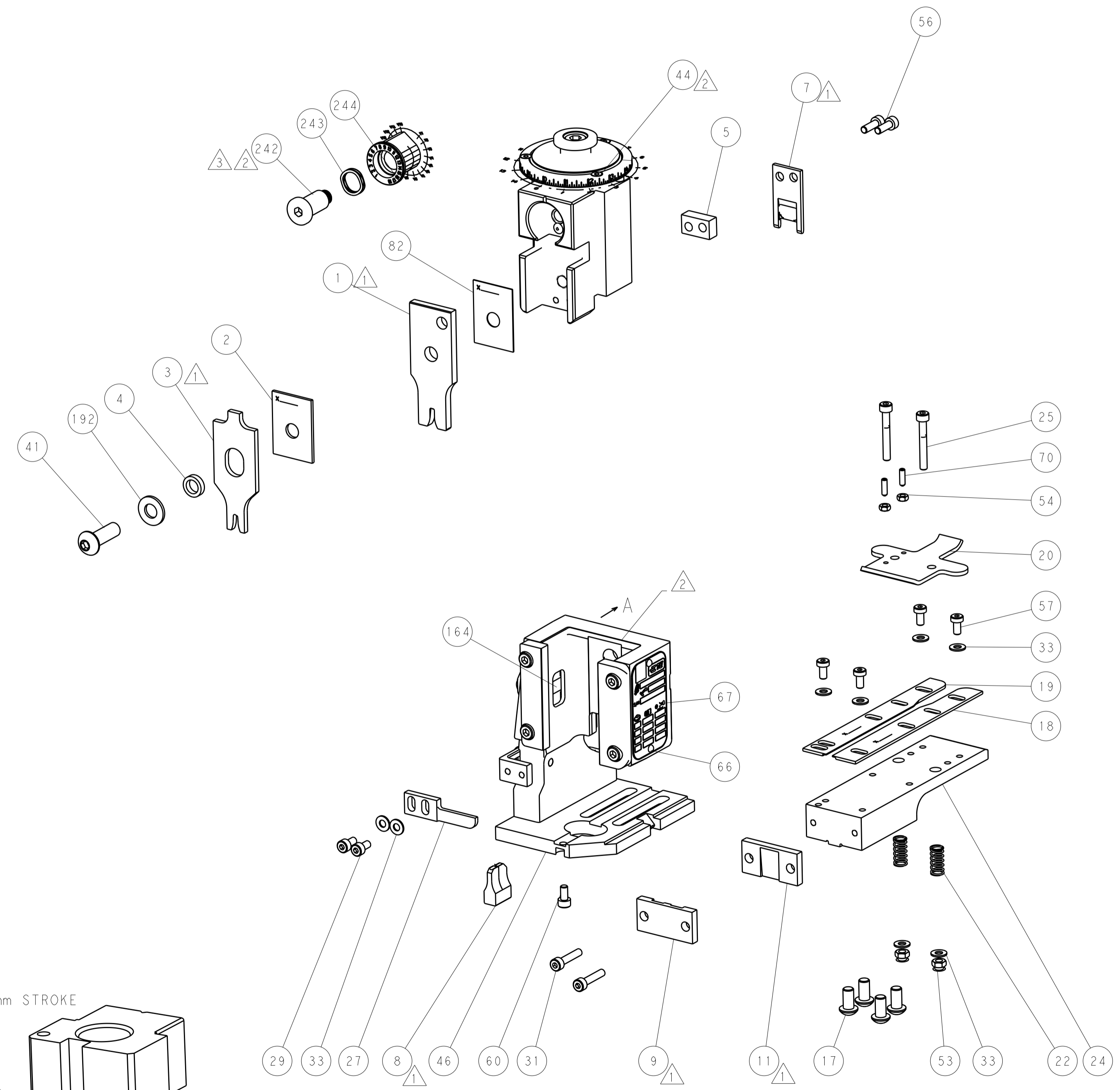
# PNEUMATIC



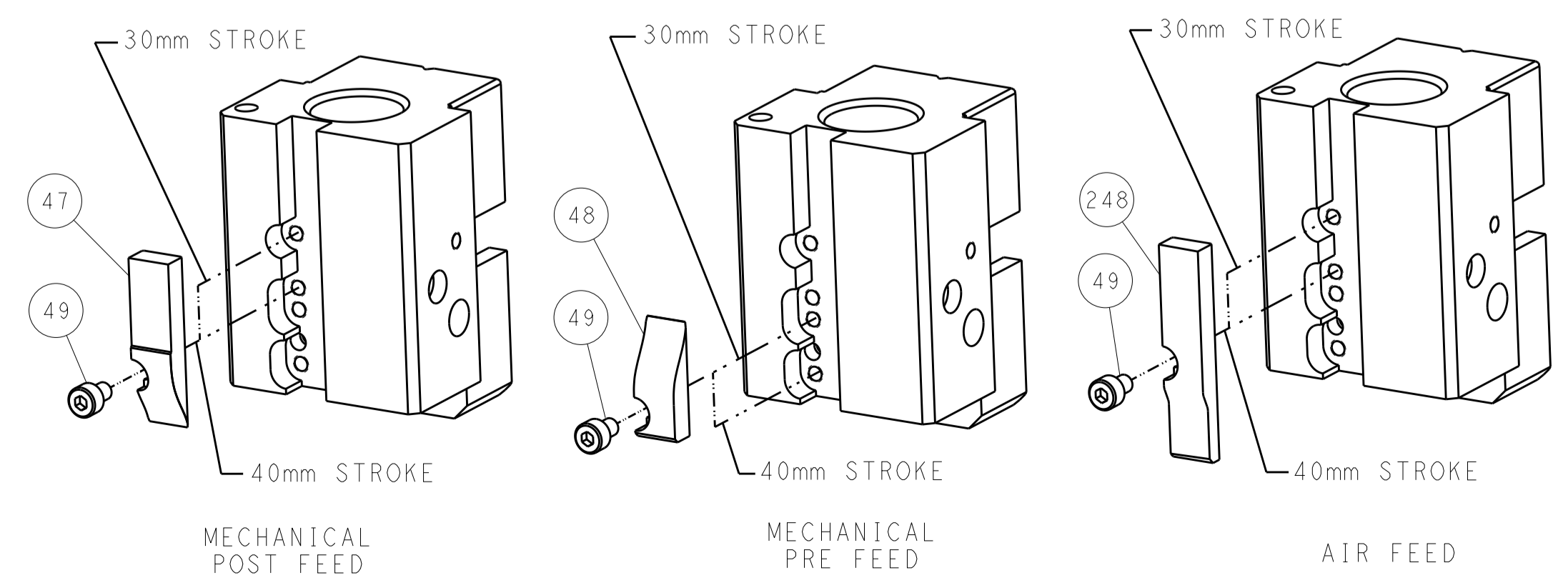
# FEED SPRING SETTING POSITION



DETAIL A



# CAM POSITIONS

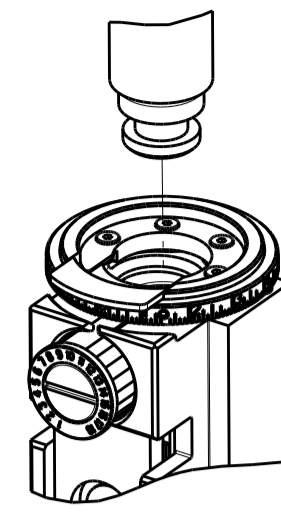


**ATLANTIC VERSION**  
 Shown on sheets 1 of 4 & 2 of 4  
 (Pacific version shown on sheets 3 of 4 & 4 of 4)

|   |  |  |  |
|---|--|--|--|
| <small>THIS DRAWING IS UNPUBLISHED. RELEASED FOR PUBLICATION BY TYCO ELECTRONICS CORPORATION. ALL RIGHTS RESERVED.</small>                              |  | DWN: X_ZHAO 30JUN2012<br>CHK: T_ELBIN 30JUN2012<br>APVD: S_XI 30JUN2012                              | TE Connectivity<br>Harrisburg, PA 17105-3608                                 |
| DIMENSIONS: mm<br>TOLERANCES UNLESS OTHERWISE SPECIFIED:<br>0 PLC ±<br>1 PLC ±<br>2 PLC ±<br>3 PLC ±<br>4 PLC ±<br>ANGLES ±<br>MATERIAL: -<br>FINISH: - |  | NAME: Ocean End Feed Applicator<br>PRODUCT SPEC: -<br>APPLICATION SPEC: -<br>WEIGHT: -<br>SCALE: 1:1 | SIZE: A1<br>CAGE CODE: 00779<br>DRAWING NO: 2150045<br>SHEET 2 OF 4<br>REV B |

| THIS DRAWING IS UNPUBLISHED.                                      | RELEASED FOR PUBLICATION |                          |            |
|---|--------------------------|--------------------------|------------|
| COPYRIGHT © BY TYCO ELECTRONICS CORPORATION. ALL RIGHTS RESERVED. |                          |                          |            |
| PART NUMBER   | REVISION                 | DESCRIPTION              | FEED TYPE  |
| 2-2150045-1   | B                        | FINE CRIMP HEIGHT ADJUST | MECHANICAL |
| 2-2150045-2   | B                        | FINE CRIMP HEIGHT ADJUST | PNEUMATIC  |
| 7-2150045-7   | A                        | CRIMP TOOLING KIT        | -          |

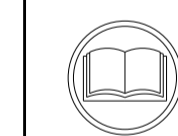
PACIFIC VERSION TERMINATOR  
INTERFACE ADAPTER



| APPLICATOR DATA                |                |      |
|--------------------------------|----------------|------|
| CRIMP                          | SIZE           | TYPE |
| WIRE                           | 2.54 mm [.100] | F    |
| INSUL                          | 3.05 mm [.120] | OV   |
| APPL INSTRUCTIONS<br>408-35043 |                |      |

|  |                         |   |
|--|-------------------------|---|
| TERMINAL DATA: TE TERMINAL                       |                         | TE CRIMP SPECIFICATION                                    |
| TERMINAL NAME: RING TERMINAL                     |                         |   |
| WIRE STRIP LENGTH<br>5.56-6.00 mm [.219-.236 IN] |                         | INSULATION DIAMETER RANGE<br>Ø1.40-2.10 mm [.055-.083 IN] |
| TERMINAL APPLICATION SPECIFICATION<br>114-2084   |                         |   |
| TERMINALS APPLIED                                |                         |   |
| TE TERMINAL<br>346100-2                          | TE TERMINAL<br>346100-3 |   |

| WIRE SIZE | CRIMP HEIGHT mm [INCH]        | CRIMP HEIGHT REFERENCE SETTING |
|-----------|-------------------------------|--------------------------------|
| 1.00mm2   | 1.89 +/- 0.05 [.074 +/- .002] | 9.6                            |
| 0.75mm2   | 1.82 +/- 0.05 [.072 +/- .002] | 10.1                           |
| 0.50mm2   | 1.75 +/- 0.05 [.069 +/- .002] | 10.7                           |



- 1 RECOMMENDED SPARE PARTS
  - 2 REFER TO SUPPLIED INSTRUCTION SHEET FOR CLEANING, LUBRICATION AND STORAGE OF APPLICATOR.
  - 3 APPLY PART NUMBER 2-23419-6 LOCTITE TO THREADS OF ITEM 242.
  - 4 CRIMP HEIGHT REFERENCE SETTING WAS THE SETTING USED WHEN THE APPLICATOR WAS QUALIFIED AT THE FACTORY. ADJUSTMENT MAY BE NECESSARY WHEN RUNNING APPLICATOR IN THE FIELD.
5. UNLESS SPECIFIED OTHERWISE TORQUE VALUES SHALL BE USED PER DOCUMENT, 101-35000.

**\*WARNING**  
ON INSTALLATION, SET WIRE DISC TO CRIMP HEIGHT REFERENCE SETTING FOR LARGEST WIRE SIZE. CRIMP HEIGHT REFERENCE SETTINGS GREATER THAN THE VALUE SHOWN MAY CAUSE DAMAGE TO THE CRIMP TOOLING. REFER TO THE INSTRUCTION SHEET FOR PROPER SETUP AND ADJUSTMENTS.

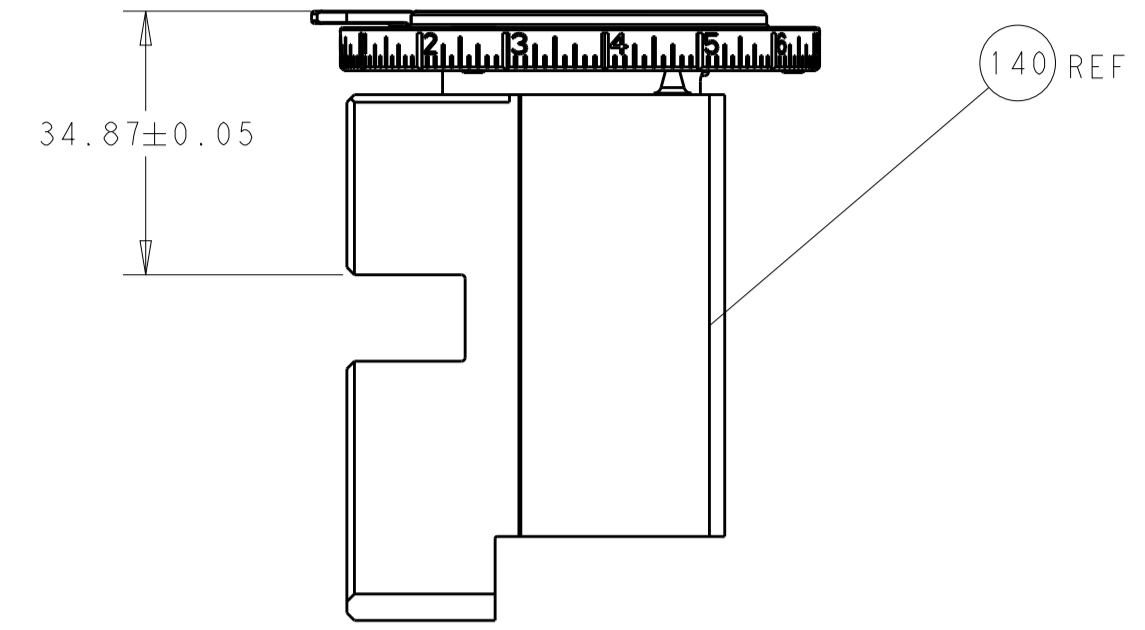
**PACIFIC VERSION**  
Shown on sheets 3 of 4 & 4 of 4  
(Atlantic version shown on sheets 1 of 4 & 2 of 4)

| LOC | DIST | REVISIONS |     |             |      |     |      |
|-----|------|-----------|-----|-------------|------|-----|------|
| A   | 66   | P         | LTN | DESCRIPTION | DATE | OWN | APVD |
|     |      | -         |     | SEE SHEET 1 |      |     |      |

|   |     |     |             |                                     |         |
|---|-----|-----|-------------|-------------------------------------|---------|
| - | 1   | 1   | 2119082-9   | CAM, SNAIL, INSULATION ADJUSTMENT   | 244     |
| - | 1   | 1   | 2079764-1   | WASHER, WAVE SPRING, CREST-TO-CREST | 243     |
| 3 | -   | 1   | 2119083-1   | RETAINER, INSULATION DIAL           | 242     |
| - | -   | 1   | 2119580-1   | MECHANICAL FEED ASSEMBLY            | 239     |
| - | 1   | -   | 2844940-4   | AIR FEED MODULE                     | 238     |
| - | 1   | 1   | 1-18028-0   | WASHER, FLAT, REG M8                | 192     |
| - | 4   | 4   | 2079383-9   | SCR, BHSC, RoHS (M6 X 20)           | 186     |
| - | REF | REF | 994970-2    | COUNTER, MAGNETIC                   | 164     |
| - | 1   | -   | 2119641-2   | FEED CAM, AIR FEED                  | 152     |
| - | 1   | 1   | 2168083-8   | SCR, SKT HD CAP, RoHS, M4 X 16      | 144     |
| - | -   | 1   | 2119653-2   | FEED CAM, POST FEED                 | 142     |
| - | 1   | 1   | 2119655-6   | APPLICATOR BASIC ASSEMBLY, EF       | 141     |
| - | 1   | 1   | 1803518-1   | RAM ASSEMBLY, EF PACIFIC            | 140     |
| - | 1   | 1   | 455888-4    | SPACER, CRIMPER                     | 82      |
| - | 1   | 1   | 1803607-4   | DOCUMENTATION PACKAGE               | 71      |
| - | 2   | 2   | 2-18032-2   | SCR, SET, FLT PNT, M3 X 10.0        | 70      |
| - | 1   | 1   | 2119740-1   | TAG, IDENTIFICATION                 | 67      |
| - | 2   | 2   | 2168078-1   | SCREW, DRIVE, RH, RoHS, 2 x .188    | 66      |
| - | 1   | 1   | 5-18022-5   | SCR, HEX HD CAP, M4 X 6.0           | 59      |
| - | -   | 1   | 2063961-1   | FEED FINGER                         | 58      |
| - | 4   | 4   | 2168400-4   | SHCS, LOW HEAD, RoHS, M4 X 8        | 57      |
| - | 2   | 2   | 2168083-3   | SCR, SKT HD CAP, RoHS, M4 X 12.0    | 56      |
| - | 2   | 2   | 5018030-1   | NUT, HEX, REG, RoHS, M3             | 54      |
| - | 2   | 2   | 986965-8    | NUT, LOCK, HEX, TORQUE (M4)         | 53      |
| - | 1   | -   | 2063961-9   | FEED FINGER                         | 51      |
| - | 1   | 2   | 18023-9     | SCR, SKT HD CAP M4 X 6.0            | 49      |
| - | -   | 1   | 2119652-1   | FEED CAM, PRE FEED                  | 48      |
| - | 1   | 1   | 1803602-1   | SCR, BHSC, RoHS (M8 X 25)           | 41      |
| - | 8   | 8   | 1-18028-2   | WASHER, FLAT, REG M4                | 33      |
| - | 2   | 2   | 2168083-9   | SCR, SKT HD CAP, RoHS, M4 X 20      | 31      |
| - | 2   | 2   | 2168083-2   | SCR, SKT HD CAP, RoHS, M4 X 8.0     | 29      |
| - | 1   | 1   | 240639-1    | STRIPPER (MACHINING)                | 27      |
| - | 2   | 2   | 1-2168083-5 | SCR, SKT HD CAP, RoHS, M4 X 30      | 25      |
| - | 1   | 1   | 1752371-5   | PLATE, STRIP GUIDE                  | 24      |
| - | 2   | 2   | 2-22281-3   | SPRING, COMPRESSION                 | 22      |
| - | 1   | 1   | 1803292-4   | DRAG                                | 20      |
| - | 1   | 1   | 1901696-9   | STRIP GUIDE, REAR                   | 19      |
| - | 1   | 1   | 1901695-9   | STRIP GUIDE, FRONT                  | 18      |
| 1 | -   | 1   | 240644-1    | PLATE, REAR SHEAR                   | 11      |
| - | -   | -   | -           | -                                   | 10      |
| 1 | -   | 1   | 690482-5    | PLATE, FRONT SHEAR                  | 9       |
| 1 | 1   | 1   | 1803000-4   | ANVIL, COMBINATION, END FEED        | 8       |
| 1 | -   | 1   | 2217206-7   | BLADE, SLUG                         | 7       |
| - | 1   | 1   | 1-240641-5  | SPACER                              | 5       |
| - | 1   | 1   | 238011-2    | BLOCK, CRIMPER SPACER               | 4       |
| 1 | 1   | 1   | 1-2119785-9 | CRIMPER, INSULATION OVERLAP PREMIUM | 3       |
| - | 1   | 1   | 1-455888-5  | SPACER, CRIMPER                     | 2       |
| 1 | 1   | 1   | 1-456407-0  | CRIMPER, WIRE PREMIUM               | 1       |
| - | 77  | 22  | 21          | PART NO                             | ITEM NO |

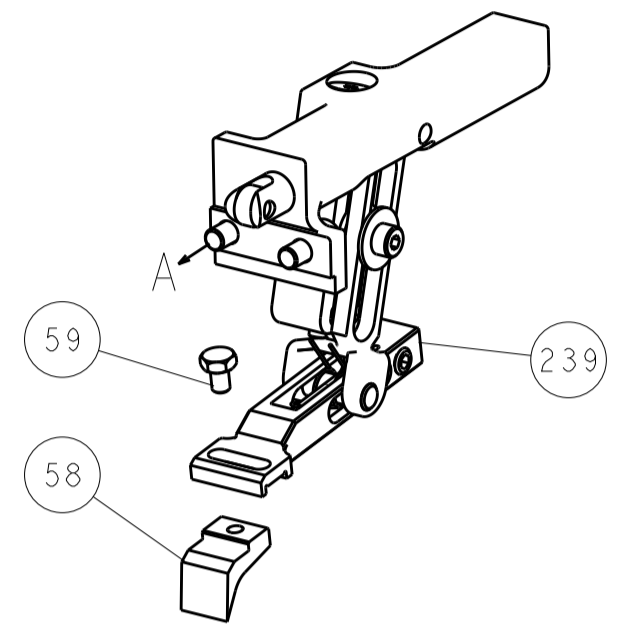
|                |  |  |  |                       |  |                        |  |                      |  |                                 |  |
|----------------|--|--|--|-----------------------|--|------------------------|--|----------------------|--|---------------------------------|--|
| DIMENSIONS: mm |  | TOLERANCES UNLESS OTHERWISE SPECIFIED: |  | DWN: X.ZHAO 30JUN2012 |  | CHK: T.ELBIN 30JUN2012 |  | APVD: S.XI 30JUN2012 |  | NAME: Ocean End Feed Applicator |  |
| 0 PLC ±        |  | 1 PLC ±                                |  | 2 PLC ±               |  | 3 PLC ±                |  | 4 PLC ±              |  | SIZE: A1                        |  |
| ANGLES         |  | FINISH                                 |  | WEIGHT                |  | SCALE: 1:1             |  | SHEET: 3 OF 4        |  | REV: B                          |  |
| MATERIAL       |  | FINISH                                 |  | WEIGHT                |  | SCALE: 1:1             |  | SHEET: 3 OF 4        |  | REV: B                          |  |

| LOC |    | DIST |     | REVISIONS   |      |     |      |
|-----|----|------|-----|-------------|------|-----|------|
| A   | 66 | P    | LTM | DESCRIPTION | DATE | DWN | APVD |
|     |    | -    |     | SEE SHEET 1 | -    | -   | -    |

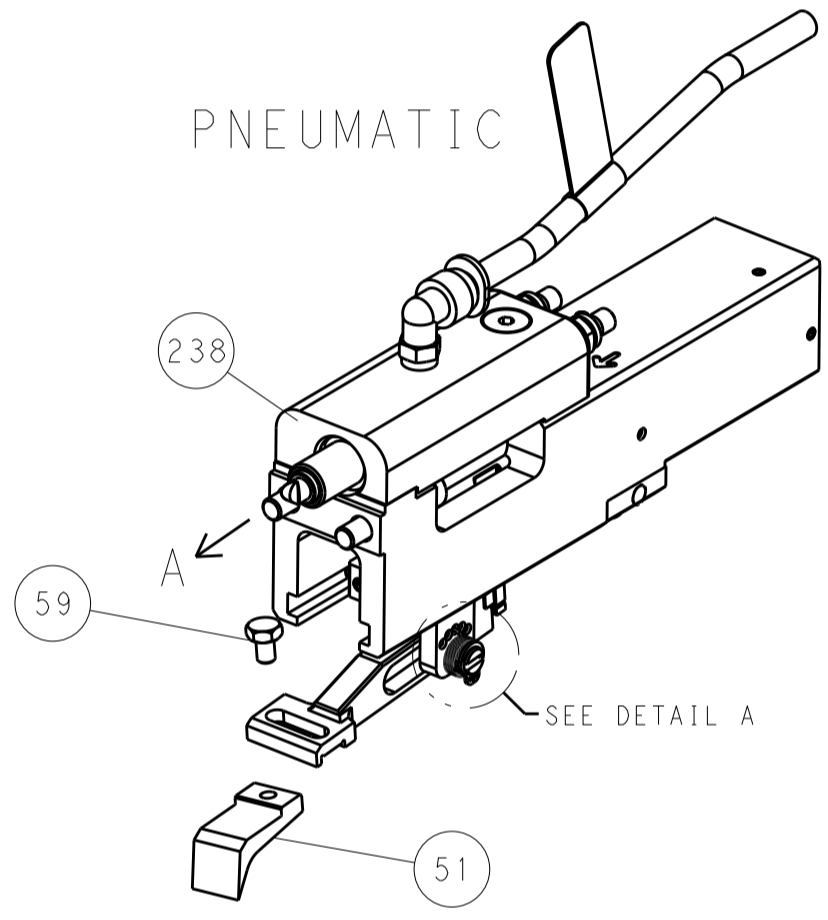


RAM SET-UP

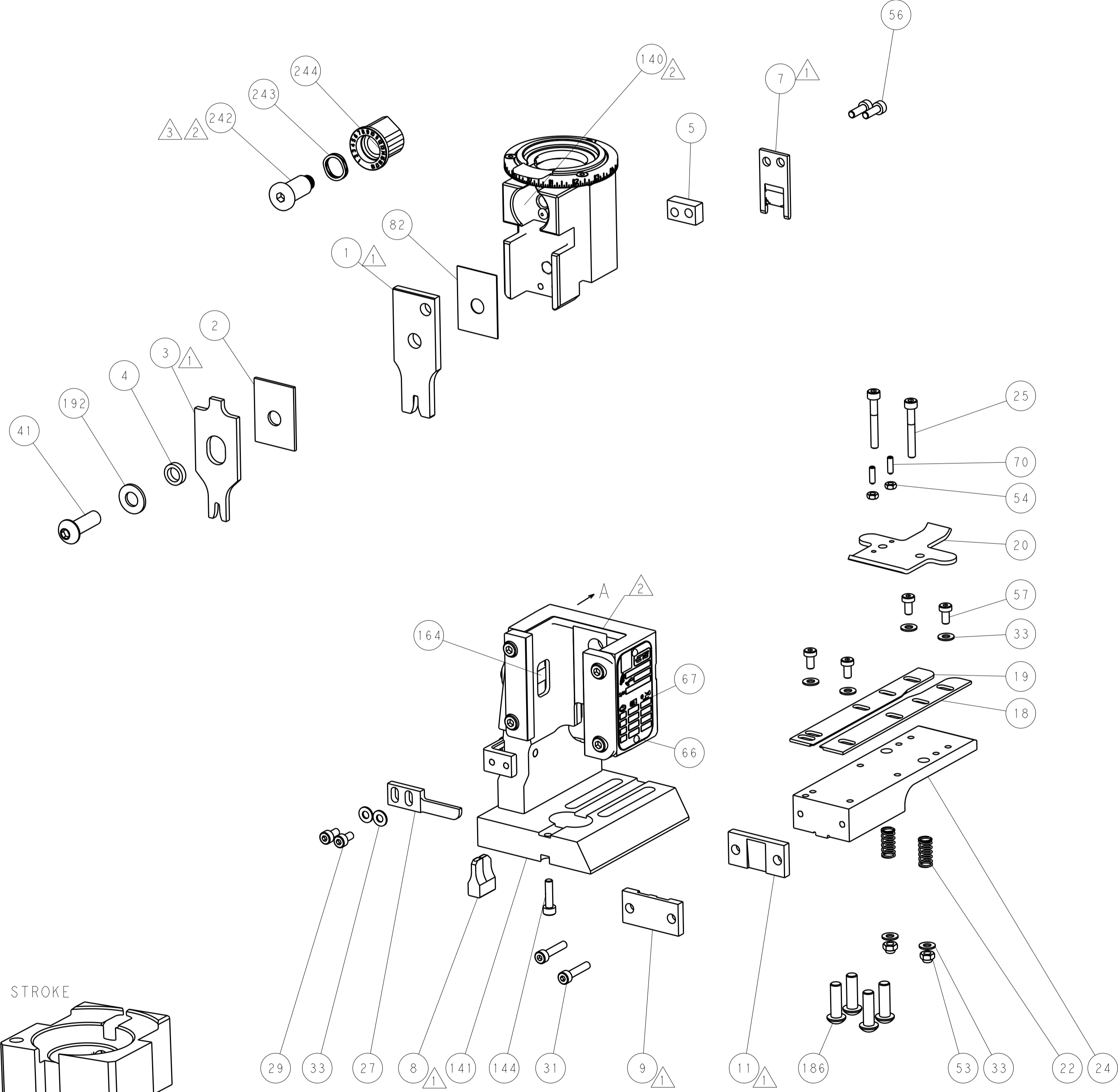
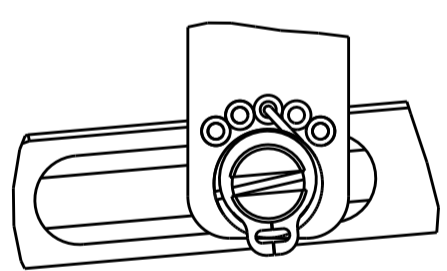
FEED TYPE  
MECHANICAL



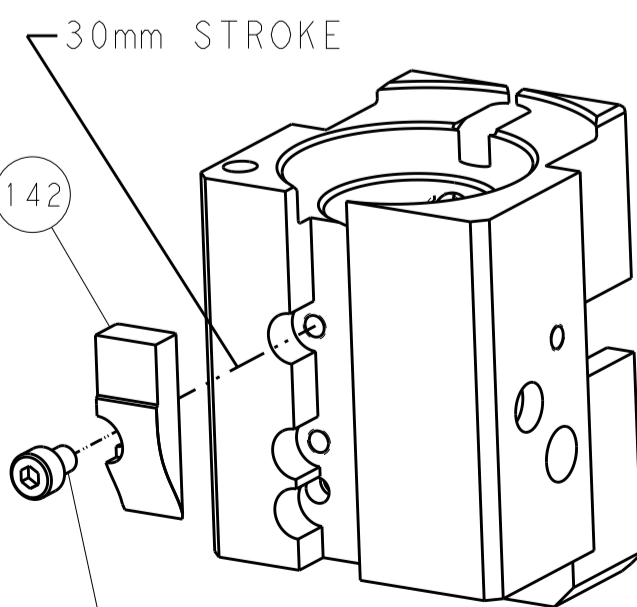
PNEUMATIC



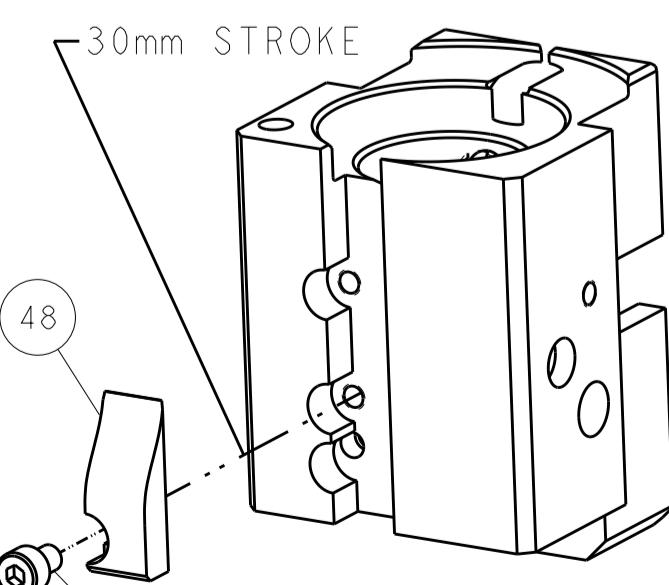
FEED SPRING  
SETTING POSITION



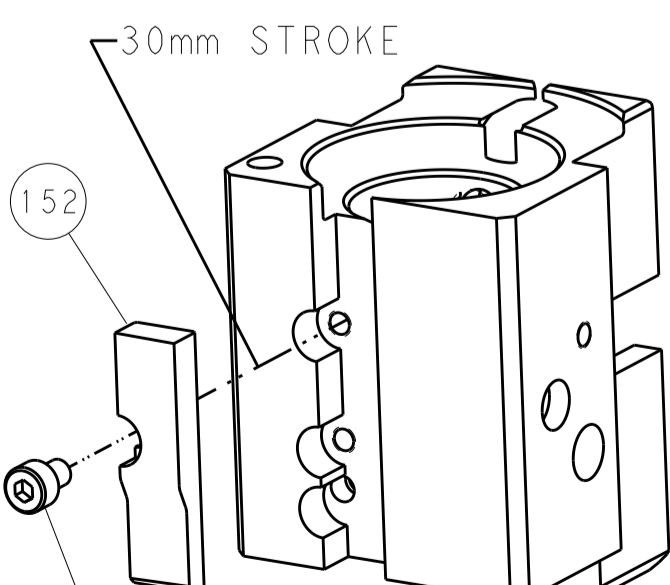
CAM POSITIONS



MECHANICAL  
POST FEED



MECHANICAL  
PRE FEED



AIR FEED

PACIFIC VERSION  
 Shown on sheets 3 of 4 & 4 of 4  
 (Atlantic version shown on sheets 1 of 4 & 2 of 4)

|             |          |  |         |                      |         |   |                           |
|-------------|----------|--|---------|----------------------|---------|---|---------------------------|
| DIMENSIONS: |          | TOLERANCES UNLESS OTHERWISE SPECIFIED: |         | DWN X_ZHAO 30JUN2012 |         | STE TE Connectivity Harrisburg, PA 17105-3608 |                           |
| mm          | 0 PLC ±  | 1 PLC ±                                | 2 PLC ± | 3 PLC ±              | 4 PLC ± | APVD S_XI 30JUN2012                           | NAME                      |
|             | ANGLES ± |  |         |                      |         | PRODUCT SPEC                                  | Ocean End Feed            |
| MATERIAL    | FINISH   |  |         |                      |         | APPLICATION SPEC                              | Applicator                |
|             |          |  |         |                      |         | WEIGHT  | SIZE CAGE CODE DRAWING NO |
|             |          |  |         |                      |         | Customer Accessible Production Drawing        | A 00779 ©=2150045         |
|             |          |  |         |                      |         | SCALE 1:1                                     | SHEET 4 OF 4 REV B        |