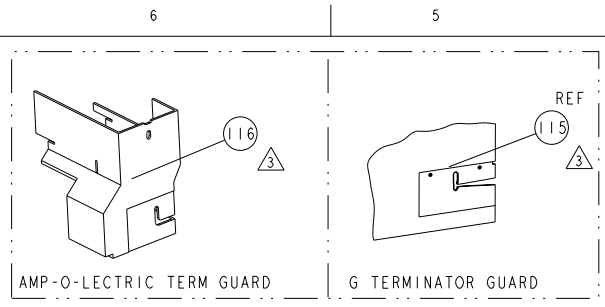


PART NUMBER	REV	FIRST USED	POWER UNIT	FEED TYPE	DESCRIPTION
1855418-2	B	565435-5	BENCH MODEL K	AIR FEED	NO CUT CARRIER
1855418-3	B	354500-1	BENCH MODEL G	AIR FEED	NO CUT CARRIER
7-1855418-7	A	-	-	-	SPARE PARTS

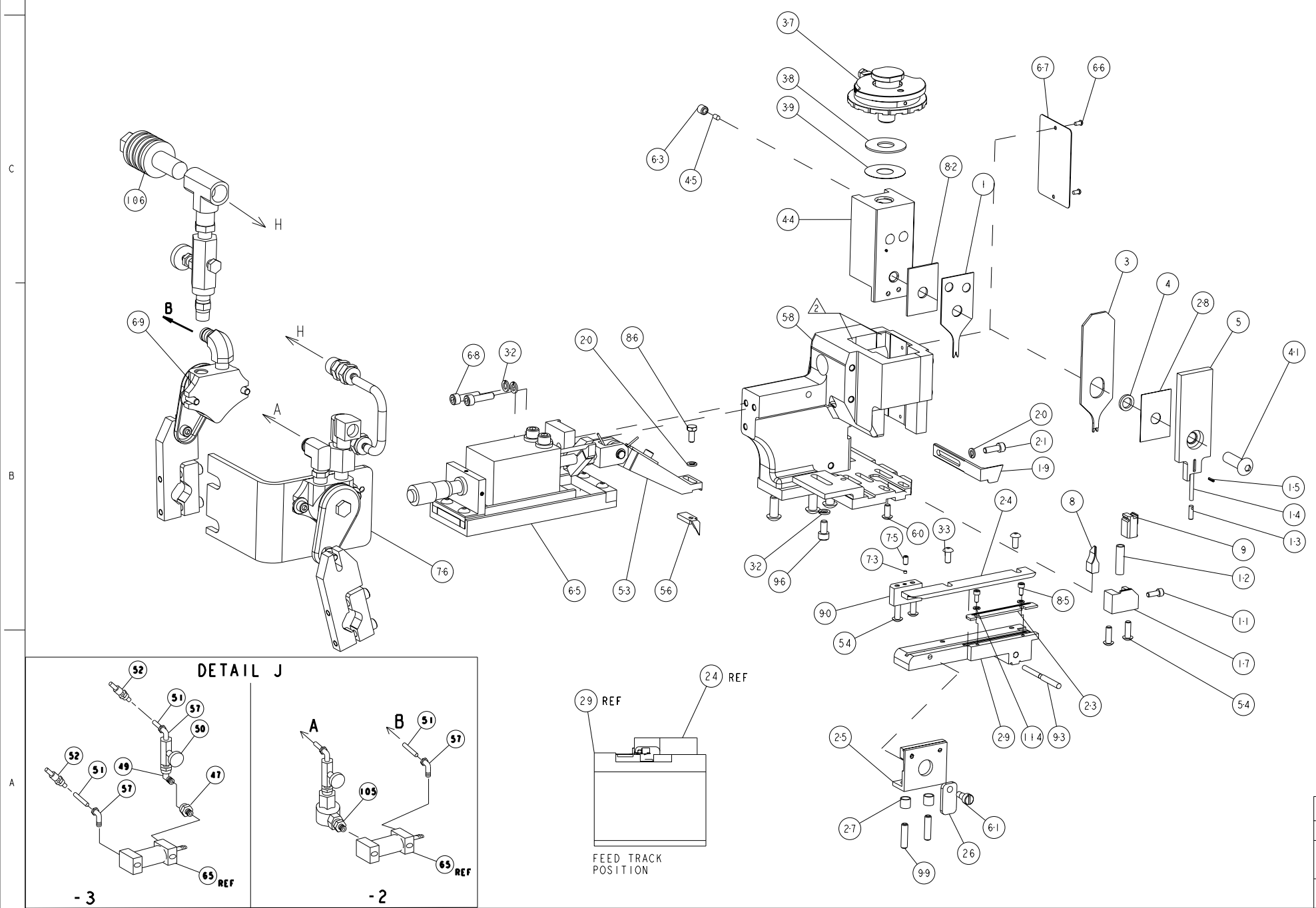
- △ RECOMMENDED SPARE PARTS
- △ GREASE LIGHTLY
- △ GUARD MUST BE IN PLACE WHEN OPERATING APPLICATOR IN A BENCH MACHINE

***WARNING:**
 ON INSTALLATION, SET WIRE DISC TO LARGEST WIRE SIZE SETTING. USE OF SETTINGS BELOW MIN REQUIRED CRIMP HEIGHT SETTING WILL CAUSE DAMAGE TO CRIMP TOOLING.



TERMINAL NAME: 1.0 MM PITCH WIRE TO BOARD CONNECTOR					
TE PN	TE TERMINAL	TE CRIMP SPECS	CRIMP HEIGHT	WIRE SIZE	REF SETTING
1734597	-	-	.46±0.02mm [.0181±.0008]	28 AWG	B 2
-	-	-	.42±0.02mm [.0165±.0008]	30 AWG	B 4
-	-	-	.405±0.025mm [.0159±.0010]	32 AWG	B 6
		CRIMP	SIZE	TYPE	RANGE
-	-	WIRE	0.69mm [.027]	F	28-32 AWG
-	-	INSUL	0.76mm [.030]	F	∅0.4-0.8mm
WIRE STRIP LENGTH	TERM APPL SPEC	FEED	APPL INSTRUCTIONS	SET UP GAGE	
1.0-1.2mm	114-57020	4.00mm	408-8040	458637-1	

LOC	DIST	REVISIONS					
A	66	F	LYN	DESCRIPTION	DATE	DRN	APPD
		A		RELEASED	12DEC2008	LG	GB
		B		ECR-10-003282	12FEB2010	MY	TE



△	-	-	1	-	462992-7	GUARD ASSEMBLY	116
△	-	REF	-	..	679532-1	INSERT, GUARD	115
-	2	2	-	-	21024-2	WASHER, SPRG LOCK, REG NO 4	114
-	-	-	1	-	24042-2	VALVE, SLEEVE, 3-WAY	106
-	-	-	1	-	692655-5	AIR FEED VALVE ASSEMBLY	105
-	2	2	-	-	5-21006-6	SCR, SET, CUP POINT 10-32 X .750	99
-	-	-	1	-	3-21000-4	SCR, SKT HD CAP 10-32 X .375	96
-	-	-	1	-	1633031-1	ROD, THREADED	93
-	-	-	1	-	1633020-1	FINE ADJUST SCREW BLOCK	90
-	-	-	1	-	2-22603-1	SCR, HEX HD CAP, 1N	86
-	2	2	-	-	1-21000-3	SCR, SKT HD CAP 4-40 X .250	85
-	-	-	1	-	1-455888-2	SPACER, CRIMPER	82
-	-	-	1	..	692655-6	AIR FEED VALVE ASSEMBLY	76
-	-	-	1	-	2-21008-9	SCR, SET, SELF LOCKING 1/4-20 X .250	75
-	-	-	1	-	690191-5	PLUG, NYLON	73
-	-	-	1	-	4088040	SF APPL INST 408-8040	72
-	-	-	1	-	217238-1	GENERAL INSTRUCTION PKG	71
-	-	-	1	-	455350-4	AIR BLAST ASS'Y	69
-	2	2	-	-	3-21000-7	SCR, SKT HD CAP 10-32 X .750	68
-	-	-	1	-	461264-5	PLATE, IDENTIFICATION	67
-	2	2	-	-	21017-2	SCREW, DRIVE	66
-	-	-	1	-	1633030-1	AIR FEED ASSEMBLY, FINE ADJUST	65
-	-	-	1	-	21009-2	SCR, SET, SELF LOCKING 1/4-20 X .250	63
-	-	-	1	-	22353-8	SCR, SHLD, SLOT HD, 3/16 DIA	61
-	-	-	1	-	22733-8	SCR, BHSC, SELF-LOCKING, 8-32 X .375	60
-	-	-	1	-	1633399-3	APPL., BASIC AIR FEED SUB ASSY	58
-	2	1	-	-	980285-2	ELBOW, MALE SWIVEL 1/8NPT x .25	57
-	-	-	1	-	5-694433-0	FEED PAWL	56
-	4	4	-	-	2-21002-2	SCR, BTN SKT HD CAP 8-32 X .500	54
-	-	-	1	-	461062-2	FEED FINGER ASSEMBLY	53
-	2	-	..	-	23238-1	INSERT, COUPLING	52
-	48	21	IN	-	27319-4	TUBING 1/4" O.D.	51
-	-	-	1	-	23054-1	VALVE, FLOW CONTROL	50
-	-	-	1	-	22306-3	ELBOW, STREET, 90° 1/8 NPT	49
-	-	-	1	-	22304-1	NIPPLE, HEX 1/8 NPT	47
-	-	-	1	-	690191-1	PLUG, NYLON	45
-	-	-	1	-	455673-1	RAM, SIDE FEED	44
-	-	-	1	-	7-21002-9	SCR, BTN SKT HD CAP 5/16-24 X 1.00	41
-	-	-	1	-	690125-1	SHIM SUB-ASSY	39
-	-	-	1	-	1-469367-1	SHIM	38
-	-	-	1	-	879103-3	FINE ADJUST HEAD SUBASSY	37
-	2	2	-	-	2-21002-1	SCR, BTN SKT HD CAP 8-32 X .375	33
-	3	3	-	-	21024-5	WASHER, SPRG LOCK, REG NO 10	32
-	-	-	1	-	1633016-1	PLATE, STRIP GUIDE	29
-	-	-	1	-	455888-3	SPACER, CRIMPER	28
-	2	2	-	-	22281-8	SPRING, COMPRESSION	27
-	-	-	1	-	240793-1	LEVER, DRAG RELEASE	26
-	-	-	1	-	679754-1	STOCK DRAG ASSEMBLY	25
-	-	-	1	-	1633013-6	STRIP GUIDE, REAR	24
-	-	-	1	-	1633015-1	FRONT STRIP GUIDE	23
-	-	-	1	-	2-21000-7	SCR, SKT HD CAP 8-32 X .500	21
-	2	2	-	-	21024-4	WASHER, SPRG LOCK, REG NO 8	20
-	-	-	1	-	1-1338987-7	STRIPPER	19
△	-	-	1	-	679625-1	SHEAR HOLDER, FRONT (NO CUT)	17
-	-	-	1	-	21028-2	PIN, SLOTTED SPRING .062 X .250	15
-	-	-	1	-	5-547505-2	SPRING, COMPRESSION	14
-	-	-	1	-	854769-7	HOLDER, INS	13
-	-	-	1	-	3-22280-3	SPRING, COMPRESSION	12
-	-	-	1	-	1-21000-9	SCR, SKT HD CAP 6-32 X .375	11
△	-	-	1	-	1633705-1	FLOATING SHEAR, FRONT	9
△	-	-	1	-	1-1633023-1	ANVIL, COMBINATION	8
-	-	-	1	-	854772-9	DEPRESSOR, SHEAR	5
-	-	-	1	-	238011-6	BLOCK, CRIMPER SPACER	4
△	-	-	1	-	1633712-2	CRIMPER, INSULATION F	3
△	-	-	1	-	1633713-2	CRIMPER, WIRE PREMIUM	1

DIMENSIONS: INCHES 		TOLERANCES UNLESS OTHERWISE SPECIFIED: 0 PLC ±.01 1 PLC ±.01 2 PLC ±.01 3 PLC ±.001 4 PLC ±.0001 ANGLES ±.001		DWN: R.O. WILSON 28JUL2007 CHK: R.O. WILSON 28JUL2007 APPD: T.L. ELBRIN 28JUL2007		NAME: Tyco Electronics Harrisburg, PA 17105-3608	
MATERIAL:		FINISH:		APPLICATION SPEC:		SIZE: A 00779 C=1855418	
CUSTOMER ACCESSIBLE PRODUCTION DRAWING				SCALE: 3:5		SHEET: 1 OF 1	