



# T3212 PRINTER

**THERMAL TRANSFER  
PRINTER (300dpi)**

## TECHNICAL DATASHEET

TTDS-272 issue 3, September 2019

The T3212 printer, is specially designed to print on a wide range of TE Connectivity labels, cable markers, and identification marker sleeves.

The T3212 printer is now also available bundled, with the latest version of TE Connectivity printing software, WinTotal. Please see page 3, for printer order details.

The T3212 printer supersedes the TE3112 printer.

### Features

- High accuracy printing
- Easy to use
- Light weight
- Small footprint
- Easy to fit accessories
- Wi-Fi dongle supplied
- Full color touch screen
- Help videos loaded on printer

### Applications

- Industrial environments

### Approvals / Declarations

- CE
- FCC Class A
- CB
- UL
- EAC
- CCC
- KC
- S-MARK
- RCM

For the printer EU Declaration of conformity latest issue, please download:

“CE\_CERT\_RV3\_00001\_C1” for the T3212-PRINTER

These documents can be found at the TE document centre:

<http://www.te.com/commerce/DocumentDelivery/DDEController>

### Environmental

A downloadable declaration and further information covering RoHS and REACH compliance can be found at the ‘TE Product Compliance Support Centre’:

<http://www.te.com/en/resources/product-compliance.html>

### Specifications

The printer’s 300dpi resolution, combined with recommended labels, cable markers, and identification marker sleeves, thermal transfer ribbons, meet all relevant TE performance specifications.

Print quality and print performance can only be guaranteed when specific TE printer and ribbons are used.

The current list of recommended printers and ribbons combinations can be found in TE document 411-121005 ‘Identification Printer Product Ribbon Matrix’.

This document can be found at the TE document centre:

<http://www.te.com/commerce/DocumentDelivery/DDEController>

### HELP

For help and assistance please contact your local TE Connectivity representative. Alternatively, please contact your local Identification specialist by consulting TE document “411-121057” This document can be found at the TE document centre:

<http://www.te.com/commerce/DocumentDelivery/DDEController>

**PRINTER ORDERING INFORMATION**

DESCRIPTION	PART NUMBER
<b>T3212-PRINTER</b>	<b>1-2186500-1</b>
<b>T3212-SWARE-PRINTER</b> (Note 1)	<b>1-2186501-1</b>

**PRINTER PROPERTIES**

**PERFORMANCE**

PRINT SPEED:	30, 40, 50, 75, 100, 125, 150, 175, 200, 225, 250, 275 and 300mm/s. (1, 1.5, 2, 3, 4, 5, 6, 7, 8, 8.8, 9.8, 10.8, 11.8in/s).
PRINT WIDTH MAX:	105.7mm (4.16 in).
PRINT DEFINITION:	300dpi Thermal Transfer.
LABEL WIDTH: CARRIER & TUBE WIDTH:	4 - 110mm (0.16 - 4.33 in). 9 - 114mm (0.25 - 4.5 in).
LABEL HEIGHT: LABEL THICKNESS:	3mm (0.12 in) minimum height without Label backfeed. 4mm (0.16 in) minimum height with label backfeed to 4,000mm (157.5 in) maximum. Label thickness 0.03 - 0.60mm (0.001 - 0.024 in). Tube thickness up to 1.1mm (0.043 in).
INTERNAL ROLL CAPACITY:	205mm (8 in) Maximum outside roll diameter, inside core diameter 38.1 – 100mm (1.5 – 4 in).
INK RIBBONS:	25.4mm (1 inch) core, ink inside or outside, variable length up to 450m (1476 ft). Width 25 -114mm (0.98 - 4.49 in).
OPERATING TEMPERATURE: HUMIDITY:	+5°C to +40°C (+41°F to +104°F). 10 - 85% non condensing.
SENSOR:	Variable position Gap & Reflective (automatic calibration).
ELECTRICAL REQUIREMENTS:	100 to 240VAC - 50/60Hz, PFC
POWER CONSUMPTION:	Standby<10W / Typical 150W / Maximum 300W
PHYSICAL CHARACTERISTICS:	Depth: 460mm (18.1 in). Height: 288mm (11.3 in). Width: 252mm (9.92 in). Weight: 10kg (22 lb).
ELECTRONICS:	RAM 256MB, Processor speed 800MHz, Memory IFFS flash 50MB, Slot for SD memory card up to 512GB.
INTERFACES:	RS232C 1,200 to 230,400 baud/8 bit. USB 2.0 Hi-speed device to connect a PC. Ethernet 10/100 BASE-T. LPD, IPv4, IPv6, RawIP printing, DHCP, HTTP, FTP, SMTP, SNMP, TIME, NTP, Zeroconf, SOAP web service. 1 x USB host at the operation panel for Service Key or USB memory stick. 1 x USB host at the operation panel for USB WLAN stick 2.4 GHz 802.11b/g/n. 2 x USB host at printer rear for Keyboard, barcode scanner, USB memory stick, USB Bluetooth adapter, USB WLAN stick 2.4 GHz 802.11b/g/n + 5 GHz a/n/ac with rod antenna. WLAN 802.11b/g/n, hotspot or infrastructure mode GHz.

Note 1, T3212-SWARE-PRINTER comprises the latest full version of WinTotal with the basic printer.



**PRINTER SPARE PARTS ORDERING INFORMATION**

<b>300 dpi Printhead</b>	
Description:	T3212-PRINTER-PRINTHEAD-300DPI
Part number:	1-2186504-1
<b>Drive roller</b>	
Part number:	T3200-PRINTER-DRIVE-ROLLER
Description:	1-2186505-1
<b>Label Sensor</b>	
Description:	T3200-PRINTER-LABEL-SENSOR
Part number:	1-2186515-1

For full details of replacement parts please consult TE document 404-121026, T3212/T3224 PRINTER ILLUSTRATED PARTS LIST

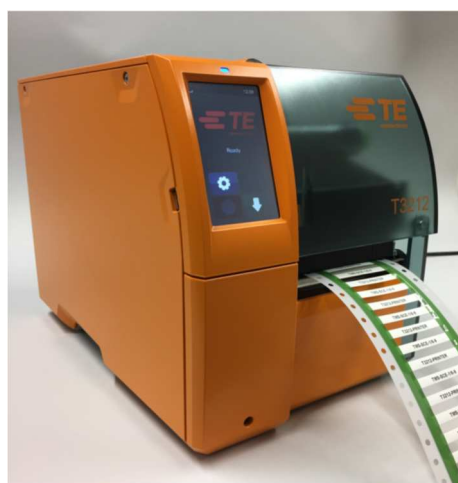
**PRINTER ACCESSORY ORDERING INFORMATION**

<b>Cutter:</b>	
Description:	T3200-PRINTER-CUTTER
Part number:	1-2186510-1
<b>Perforator:</b>	
Description:	T3200-PRINTER-PERFORATOR
Part number:	1-2186509-1
<b>Universal reel holder:</b>	
Description:	PRINTER-UNIVERSAL-REEL-HOLDER
Part number:	EC9926-000

For more details regarding printer accessories please consult TTDS-260, and for more details concerning the Universal reel holder please consult TTDS-259.

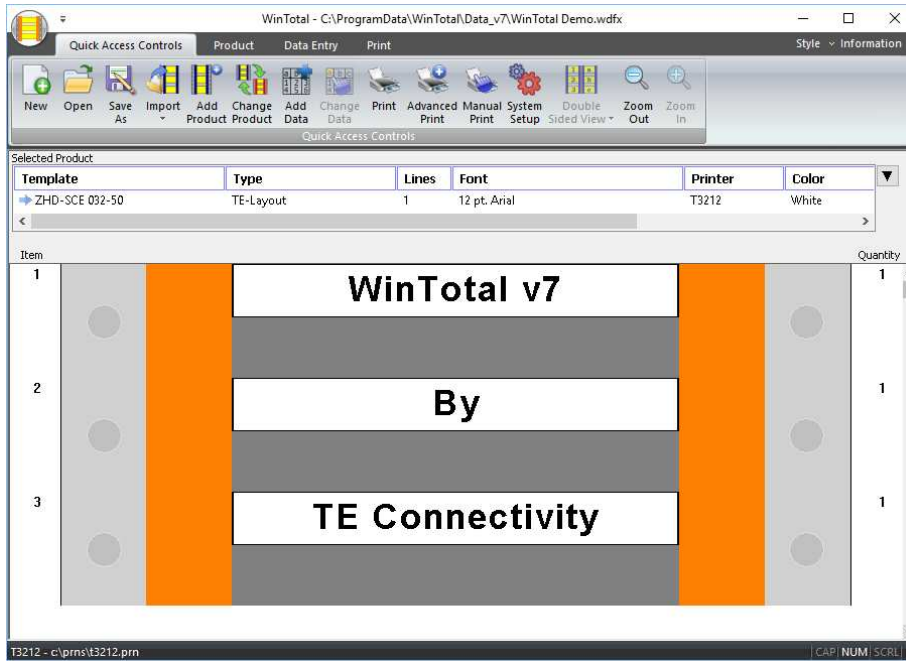


T3212 fitted with a perforator



T3212 printing marker sleeves

**SOFTWARE**



**SOFTWARE ORDERING INFORMATION**

WINTOTAL 7 (Dongle)	
Description	WINTOTAL-7-DONGLE
Part number	1-2186545-1
WINTOTAL 7 (Licence)	
Description	WINTOTAL-7-END-USER-LICENCE
Part number	1-2186546-1
WINTOTAL 6 (Dongle)	
Description	WINTOTAL-6-DONGLE
Part number	EC9816-000
WINTOTAL 6 (Licence)	
Description	WINTOTAL-6-END-USER-LICENCE
Part number	EC9817-000

For full compatibility with T3212 printers please use WinTotal version 6.1.07 or later.

Cable markers and labels are fully supported by WINTOTAL printing software, available from the TE product store:

[www.te.com/wintotal](http://www.te.com/wintotal)

**te.com**

TE Connectivity, TE Connectivity (logo) and Every Connection Counts and WinTotal are trademarks. All other logos, products and/or company names referred to herein might be trademarks of their respective owners.

The information given herein, including drawings, illustrations and schematics which are intended for illustration purposes only, is believed to be reliable. However, TE Connectivity makes no warranties as to its accuracy or completeness and disclaims any liability in connection with its use. TE Connectivity's obligations shall only be as set forth in TE Connectivity's Standard Terms and Conditions of Sale for this product and in no case will TE Connectivity be liable for any incidental, indirect or consequential damages arising out of the sale, resale, use or misuse of the product. Users of TE Connectivity products should make their own evaluation to determine the suitability of each such product for the specific application.

© 2019 TE Connectivity Ltd. family of companies All Rights Reserved.