

## IN-LINE HEAT SHRINKABLE SPLICES HVS-C-1520S & HVS-S-1520S

### 1/C SHIELDED CABLE 15 KV

#### KEY FEATURES

- The installed length of the kit is greatly reduced with the use of the Rayfit sleeve and a wraparound re-jacketing system reduces installed length
- Series includes range taking AL or CU ShearBolt connectors

TE Connectivity's (TE) Raychem 15 kV splice is for use with solid dielectric cables, including copper tape shielded, wire shielded, UniShield shielded, and lead sheath power cables.

This series of splices utilizes the triple-extrusion Rayfit splice sleeve, which provides high recovery forces resulting in superior interfacial pressure, reduced shrink and installation time, and a slimmer space saving profile.

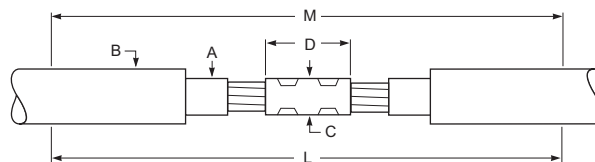
Reliability, simple installations and cost effectiveness are key requirements to achieving a dependable network. Cable accessories using Rayfit components are excellent solutions to fulfill these requirements.

Customers can count on consistent, high quality products, driven by TE's proven innovation and backed by our extraordinary customer support.

## In-Line Splices HVS-C-1250S/HVS-C-1520S



All HVS-C-1520S and HVS-S-1520 splices have been qualified to IEEE-404-2006 at 105°C. (140°C emergency operation) with the outer wraparound jacket removed for underwater load cycling.



PRODUCT SELECTION INFORMATION: DIMENSIONS IN INCHES (mm)							
Description	Conductor Size (AWG/kcmil)	Insulation Diameter (min. - max.) (A)	Jacket O.D. (max) (B)	Maximum Connector Dimensions		Kit Installed Length (L)	Required Installation Space (M)
				O.D. (C)	Length (D)		
<b>HVS-C-1520S Splice for Compression Connector (not included)</b>							
HVS-C-1521S	#2 - 2/0	0.65 - 0.95 (17 - 24)	1.20 (30)	0.80 (20)	4.00 (100)	28 (700)	28 (700)
HVS-C-1522S	3/0 - 400	0.85 - 1.30 (23 - 33)	1.65 (42)	1.20 (30)	5.00 (125)	28 (700)	28 (700)
HVS-C-1523S	500 - 750	1.10 - 1.55 (28 - 47)	1.90 (48)	1.45 (44)	6.00 (150)	35 (870)	35 (870)
HVS-C-1524S	750 - 1000	1.30 - 1.90 (33 - 48)	2.30 (58)	1.85 (47)	8.00 (200)	35 (870)	35 (870)
<b>HVS-C-1520S with Copper ShearBolt Connector</b>							
HVS-C-1522S-M1	3/0 - 400	0.85 - 1.30 (23 - 33)	1.65 (42)	1.20 (30)	4.00 (100)	28 (700)	28 (700)
HVS-C-1523S-M2	500 - 750	1.10 - 1.55 (28 - 47)	1.90 (48)	1.45 (37)	5.00 (125)	35 (870)	35 (870)
<b>HVS-S-1520S with Aluminum Mechanical ShearBolt Connector</b>							
HVS-S-1522S-M4	#2 - 2/0	0.65 - 0.95 (17 - 24)	1.20 (30)	.095 (24)	2.50 (65)	28 (700)	28 (700)
HVS-S-1522S-M5	2/0 - 350	0.79 - 1.19 (20 - 30)	1.65 (42)	1.25 (30)	4.00 (100)	28 (700)	28 (700)
HVS-S-1523S-M6	350 - 500	1.04 - 1.33 (26 - 34)	1.80 (45)	1.30 (34)	5.00 (125)	35 (870)	35 (870)
HVS-S-1524S-M8	500 - 750	1.16 - 1.55 (29 - 39)	1.90 (48)	1.55 (40)	6.00 (150)	35 (870)	35 (870)
HVS-S-1524S-M9	750 - 1000	1.35 - 1.70 (34 - 43)	2.30 (58)	1.75 (43)	8.00 (200)	35 (870)	35 (870)

M1 = CSBS-20C-500C-SOS, M2 = CSBS-300C-750C-SOS, M4 = ASBS-2-3/0, M5 = ASBS-2-350, M6 = ASBS-3/0-500, M8 = ASBS-500-750, M9 = ASBS-600-1000

PRODUCT SELECTION INFORMATION: DIMENSIONS IN INCHES (mm)			
Description	Insulation Diameter (min. - max.)	Length of Moisture Blocked Braid	Braid Size (AWG)
<b>HVS-EG Splice Extend Ground Kit</b>			
1/C cables			
HVS-EG-1	0.30 - 1.25 (8 - 32)	24 (610)	#8
HVS-EG-2	1.00 - 2.15 (25 - 55)	24 (610)	#6
HVS-EG-3	1.55 - 3.40 (39 - 86)	24 (610)	#4
3/C cables			
HVS-EG-3-1	0.30 - 1.25 (8 - 32)	36 (914)	#8
HVS-EG-3-2	1.00 - 2.15 (25 - 55)	36 (914)	#6
HVS-EG-3-3	1.55 - 3.40 (39 - 86)	36 (914)	#4

- ORDERING INFORMATION**
- Select the appropriate catalog number. All selections are based on the typical dimensions for both 100 and 133% insulated cables, nominal insulation thickness 0.175-0.220.
  - Use the insulation OD, and jacket OD range as the final ordering criteria.
  - Kits can be installed with either aluminum or copper compression connectors (connectors not included with kit).
  - If external grounding, order an HVS-EG kit.
  - Standard package: 1 kit/box
  - Related test reports EDR-5440 for HVS-C and test report EDR-5444 for HVS-S, IEEE 404-2006 and IEEE-48 draft 2008 for 105°C of Splice and Terminations.
  - For AL Mechanical ShearBolt connector information request datasheet 9-1773440-4 and for CU request 165972.

[te.com/energy](http://te.com/energy)

© 2006 - 2008, 2012, 2014, 2016 TE Connectivity Ltd. family of companies. All Rights Reserved. EPP-2637-DDS-6/16-EN-AMS-HVS-C-1250S-Raychem E315

Raychem, TE Connectivity and TE connectivity (logo) are trademarks. Other logos, product and/or company names might be trademarks of their respective owners. While TE has made every reasonable effort to ensure the accuracy of the information in this brochure, TE does not guarantee that it is error-free, nor does TE make any other representation, warranty or guarantee that the information is accurate, correct, reliable or current. TE reserves the right to make any adjustments to the information contained herein at any time without notice. TE expressly disclaims all implied warranties regarding the information contained herein, including, but not limited to, any implied warranties of merchantability or fitness for a particular purpose. The dimensions in this catalog are for reference purposes only and are subject to change without notice. Specifications are subject to change without notice. Consult TE for the latest dimensions and design specifications.

**FOR MORE INFORMATION:  
TE Technical Support Centers**

USA: +1 800 327 6996  
 France: +33 380 583 200  
 UK: +44 0870 870 7500  
 Germany: +49 896 089 903  
 Spain: +34 916 630 400  
 Italy: +39 333 250 0915  
 Benelux: +32 16 351 731  
 Canada: +1 (905) 475-6222  
 Mexico: +52 (0) 55-1106-0800  
 Latin/S. America: +54 (0) 11-4733-2200  
 China: +86 (0) 400-820-6015