

UTILUX BI-METAL CRIMP LUGS BG TYPE

KEY FEATURES

- For aluminium to copper terminations
- Friction welded
- Manufactured from high purity copper and aluminium rod
- Stepped barrel OD sizes across all bi-metal allows rationalisation of die inventory
- Pre-filled with jointing compound

Utilux is a brand that has built an enviable reputation for high quality, reliable electrical connectors. For over 90 years, this dynamic Australian brand has been a leader in the field of interconnection systems.

Our aim is to provide the best possible products and services to keep our customers at the cutting edge of industry standards - internationally.

You can be sure that Utilux branded products are fabricated from the finest materials and produced to exacting tolerances. They represent the latest technology and the best design for the tasks they are required to perform.

Utilux is a leading brand of electrical connectors sold to original equipment manufacturers and electrical distribution companies throughout Australia, New Zealand and Asia. A comprehensive range, the most up to date production technology and the highest quality control standards ensure that there are Utilux connectors, of optimum reliability and durability, for all major power distribution applications.

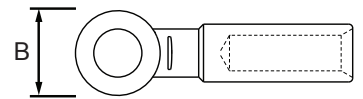
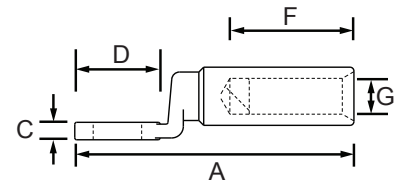
As part of the worlds largest electrical connector company, TE Connectivity, the development of products is an ongoing commitment. It is done on a global basis, utilising the talents of many people throughout the organisation to ensure a global product for a local market.

Customers can count on consistent, high quality products, driven by TE's proven innovation and backed by our extraordinary customer support.

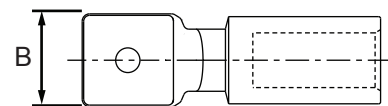
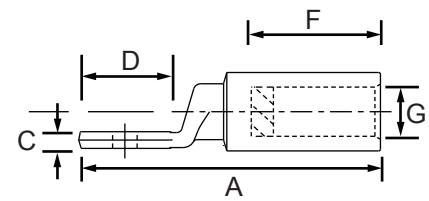
UTILUX BI-METAL CRIMP LUGS



Copper to aluminium terminations can be made with the Utilux range of Bi-Metal products. Under normal conditions, when copper comes into contact with aluminium electrolytic corrosion may result, enhanced by the presence of oxygen. Utilux Bi-metal lugs have the copper friction welded to the aluminium. The friction welding process eliminates the presence of oxygen and therefore eliminates electrolytic corrosion. The welding process also maximises the strength of the joint.



TYPE 1 PALM



TYPE 2 PALM

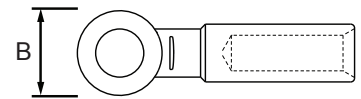
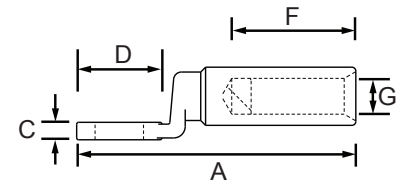
PRODUCT SELECTION INFORMATION											
Catalogue Number	Conductor Area (mm ²)	Conductor Stranding	Stud Size	Dimensions (mm)						Crimping Die	Palm type
				A	B	C	D	F	G		
BG16MB	16	7/1.70	MB	72	22	4.5	22	32	5.5	38-90AL	1
BG16M10	16	7/1.70	M10	72	22	4.5	22	32	5.5	38-90AL	1
BG25MB	25	19/1.35	MB	72	22	4.5	22	32	7.0	38-90AL	1
BG25M8	25	19/1.35	M8	72	22	4.5	22	32	7.0	38-90AL	1
BG25M10	25	19/1.35	M10	72	22	4.5	22	32	7.0	38-90AL	1
BG30M12X01	30		M12	72	22	4.5	22	32	8.0	38-132AL	1
BG35MB	35	19/1.53	MB	72	22	4.5	22	32	8.2	38-132AL	1
BG35M8	35	19/1.53	M8	72	22	4.5	22	32	8.2	38-132AL	1
BG35M10	35	19/1.53	M10	72	22	4.5	22	32	8.2	38-132AL	1
BG35M12	35	19/1.53	M12	72	22	4.5	22	32	8.2	38-132AL	1
BG35M16	35	19/1.53	M16	72	22	4.5	22	32	8.2	38-132AL	1
BG40ETM12	40		M12	72	22	4.5	22	32	9.0	38-132AL	1
BG40M12X01	40		M12	72	22	4.5	22	32	.09	38-140AL	1
BG50MB	50	19/1.78	MB	72	22	4.5	22	32	9.5	38-132AL	1
BG50M8	50	19/1.78	M8	72	22	4.5	22	32	9.5	38-132AL	1
BG50M10	50	19/1.78	M10	72	22	4.5	22	32	9.5	38-132AL	1
BG50M12	50	19/1.78	M12	72	22	4.5	22	32	9.5	38-132AL	1
BG70MB	70	19/2.14	MB	72	22	4.5	22	32	11.0	38-132AL	1
BG70M10	70	19/2.14	M10	72	22	4.5	22	32	11.0	38-132AL	1
BG70M12	70	19/2.14	M12	72	22	4.5	22	32	11.0	38-132AL	1
BG75M12	75		M12	116	30	6	30	60	12.0	38-173AL, 40-172AL	1
BG80M12X01	80		M12	116	30	6	30	60	12.0	38-220AL, 40-220AL	1
BG95MB	95	37/1.78	MB	116	30	6	30	60	13.0	38-173AL, 40-172AL	1
BG95M10	95	37/1.78	M10	116	30	6	30	60	13.0	38-173AL, 40-172AL	1
BG95M12	95	37/1.78	M12	116	30	6	30	60	13.0	38-173AL, 40-172AL	1
BG95M12X03	95	37/1.78	M12	116	30	6	30	60	13.0	38-173AL, 40-172AL	1
BG120MB	120	37/2.03	MB	116	30	6	30	60	15.0	38-173AL, 40-172AL	1
BG120M12	120	37/2.03	M12	116	30	6	30	60	15.0	38-173AL, 40-172AL	1
BG120M16	120	37/2.03	M16	116	30	6	30	60	15.0	38-173AL, 40-172AL	1
BG150MB	150	37/2.25	MB	122	35	7	35	60	16.5	38-220AL, 40-220AL	1
BG150M10	150	37/2.25	M10	122	35	7	35	60	16.5	38-220AL, 40-220AL	1
BG150M12	150	37/2.25	M12	122	35	7	35	60	16.5	38-220AL, 40-220AL	1

ET - Electro tinned finish

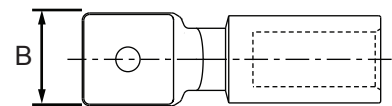
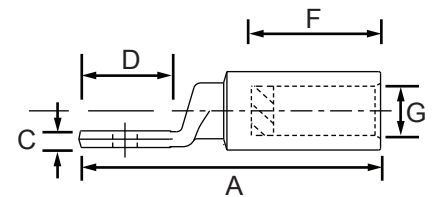
UTILUX BI-METAL CRIMP LUGS



Copper to aluminium terminations can be made with the Utilux range of Bi-Metal products. Under normal conditions, when copper comes into contact with aluminium electrolytic corrosion may result, enhanced by the presence of oxygen. Utilux Bi-metal lugs have the copper friction welded to the aluminium. The friction welding process eliminates the presence of oxygen and therefore eliminates electrolytic corrosion. The welding process also maximises the strength of the joint.



TYPE 1 PALM



TYPE 2 PALM

PRODUCT SELECTION INFORMATION											
Catalogue Number	Conductor Area (mm ²)	Conductor Stranding	Stud Size	Dimensions (mm)						Crimping Die	Palm Type
				A	B	C	D	F	G		
BG150ETM12	150	37/2.25	M12	122	35	7	35	60	16.5	38-220AL, 40-220AL	1
BG150M16	150	37/2.25	M16	122	35	7	35	60	16.5	38-220AL, 40-220AL	1
BG180M12	180		M12	122	35	7	35	60	18.0	38-231AL, 40-231AL	1
BG185MB	185	37/2.52	MB	122	35	7	35	60	18.5	38-220AL, 40-220AL	1
BG185M10	185	37/2.52	M10	122	35	7	35	60	18.5	38-220AL, 40-220AL	1
BG185M12	185	37/2.52	M12	122	35	7	35	60	18.5	38-220AL, 40-220AL	1
BG185M16	185	37/2.52	M16	122	35	7	35	60	18.5	38-220AL, 40-220AL	1
BG210M12	210		M12	122	35	7	35	60	19.5	38-250AL, 40-250AL	1
BG240MB	240	61/2.25	MB	122	35	7	35	60	21.0	38-284AL, 40-283AL	1
BG240M10	240	61/2.25	M10	122	35	7	35	60	21.0	38-284AL, 40-283AL	1
BG240M12	240	61/2.25	M12	122	35	7	35	60	21.0	38-284AL, 40-283AL	1
BG240M16	240	61/2.25	M16	122	35	7	35	60	21.0	38-284AL, 40-283AL	1
BG258M12	258		M12	122	35	7	35	60	22.2	38-284AL, 40-283AL	1
BG300MB	300	61/2.52	MB	122	35	7	35	60	23.5	38-284AL, 40-283AL	1
BG300M12	300	61/2.52	M12	122	35	7	35	60	23.5	38-284AL, 40-283AL	1
BG300M12X01	300	61/2.52	M12	122	35	7	35	60	24.7	38-284AL, 40-283AL	1
BG300M16	300	61/2.52	M16	122	35	7	35	60	23.5	38-284AL, 40-283AL	1
BG400MB	400	61/2.85	MB	160	50	10	50	70	26.5	40-390AL	2
BG400M16X01	400	61/2.85	M16	160	50	10	50	70	26.5	40-390AL	2
BG500MB	500	61/3.20	MB	160	50	10	50	70	29.5	40-390AL	2
BG630MB	630	127/2.52	MB	175	60	10	60	70	33.5	40-432AL	2
BG630M12	630	127/2.52	M12	175	60	10	60	70	33.5	40-432AL	2
BG630RM16	630	127/2.52	M16	151	45	9	45	70	33.5	40-432AL	1
BG800MB	800	127/2.85	MB	221	60	10	60	115	39.0	40-432AL	2

ET - Electro tinned finish

te.com/energy

©2016 TE Connectivity Ltd. family of companies. All Rights Reserved. EPP-2487-DDS24-AU Rev2

Utilux, TE Connectivity and TE Connectivity (logo) are trademarks. Other logos, product and/or company names might be trademarks of their respective owners. While TE has made every reasonable effort to ensure the accuracy of the information in this brochure, TE does not guarantee that it is error-free, nor does TE make any other representation, warranty or guarantee that the information is accurate, correct, reliable or current. TE reserves the right to make any adjustments to the information contained herein at any time without notice. TE expressly disclaims all implied warranties regarding the information contained herein, including, but not limited to, any implied warranties of merchantability or fitness for a particular purpose. The dimensions in this catalog are for reference purposes only and are subject to change without notice. Specifications are subject to change without notice. Consult TE for the latest dimensions and design specifications.

FOR MORE INFORMATION:

TE Customer Support Centers

NSW/QLD/NT/ACT:	+61 (2) 9554 2695
VIC/TAS/SA:	+61 (3) 9271 5243
WA:	+61 (8) 9358 7806
New Zealand:	+64 (9) 634 4580