

BIMETALLIC LUGS (XCX/XDX) FOR ALUMINUM CONDUCTORS

KEY FEATURES

- Range from 16 to 1600 mm²
- * One technology for all the sizes of cables
- * Friction welding technology
- * Crimped deep step independent installer's skills
- * Aluminium barrel and solid copper palm

TE Connectivity's (TE) XCX/XDX bimetallic lugs is the best solution to connect an aluminum conductor to a copper bar. These lugs can be used either with LV or MV terminations.

TE's XCX and XDX bimetallic lugs provide an age resistant current connection from the aluminum barrel to the solid copper palm. A single connector size for a given conductor cross section, independent of its compression ratio, is needed.

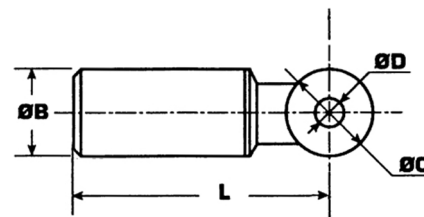
Customers can count on consistent, high quality products, driven by TE's proven innovation and backed by our extraordinary customer support.

Bimetallic Lugs XCX/XDX



XCX and XDX comply with the standards below:

- C 33090-1
- NF C 63-061 Class A
- IEC 61238-1 Class A



PRODUCT SELECTION INFORMATION

| Description | Part Number | Cross Section (mm ²) | Connector Size (mm) | | | | Weight (g) | Standard Package |
|-----------------|-------------|----------------------------------|---------------------|-----------|------------|------|------------|------------------|
| | | | ØB | ØC | ØD | L | | |
| XCX 16 | 719929-1 | 16 | 16 | 20 | 10,5 | 72 | 4 | 3 |
| XCX 25 | 719930-1 | 25 | 16 | 20 | 10,5 | 72 | 40 | 3 |
| XCX 35 | 719924-1 | 35 | 16 | 25 | 12,8 | 73,5 | 45 | 3 |
| XCX 50 | 719923-1 | 50 | 20 | 25 | 12,8 | 73,5 | 65 | 3 |
| XCX 70 | 719922-1 | 70 | 20 | 25 | 12,8 | 73,5 | 65 | 3 |
| XCX 95 | 719921-1 | 95 | 20 | 25 | 12,8 | 73,5 | 60 | 3 |
| XCX 120 | 719782-1 | 120 | 25 | 30 | 12,8 | 94 | 130 | 3 |
| XCX 150 | 719783-1 | 150 | 25 | 30 | 12,8 | 94 | 125 | 3 |
| XCX 185 | 739006-1 | 185 | 32 | 30 | 12,8 | 94 | 210 | 3 |
| XCX 240 | 739007-1 | 240 | 32 | 30 | 12,8 | 94 | 200 | 3 |
| XCX 300 | 1306957-1 | 300 | 40 | 36 | 16,5 | 137 | 380 | 3 |
| XCX 400 | 1306962-1 | 400 | 40 | 36 | 16,5 | 137 | 240 | 3 |
| XDX 500 | 708270-1 | 500 | 47 | 60 x 60 | - | 200 | 860 | 3 |
| XDX 630 | 708270-2 | 630 | 47 | 60 x 60 | 4 x Ø9 30 | 200 | 800 | 3 |
| XDX 800 | 708273-1 | 800 | 60 | 80 x 80 | - | 260 | - | 3 |
| XDX 1000 | 708273-2 | 1000 | 60 | 80 x 80 | - | 260 | - | 3 |
| XDX 1200 | 708275-1 | 1200 | 65 | 80 x 80 | 4 x Ø11 40 | 271 | - | 3 |
| XDX 1600 | - | 1600 | 70 | 125 x 125 | 4 x Ø11 45 | 322 | - | 3 |

te.com/energy

©2014 - 2016 TE Connectivity Ltd. family of companies. All Rights Reserved. EPP-2246-DDS-5/16-EN-EMEA-XCX/XDX-TE

TE Connectivity and TE Connectivity (logo) are trademarks. Other logos, product and/or company names might be trademarks of their respective owners. While TE has made every reasonable effort to ensure the accuracy of the information in this brochure, TE does not guarantee that it is error-free, nor does TE make any other representation, warranty or guarantee that the information is accurate, correct, reliable or current. TE reserves the right to make any adjustments to the information contained herein at any time without notice. TE expressly disclaims all implied warranties regarding the information contained herein, including, but not limited to, any implied warranties of merchantability or fitness for a particular purpose. The dimensions in this catalog are for reference purposes only and are subject to change without notice. Specifications are subject to change without notice. Consult TE for the latest dimensions and design specifications.

FOR MORE INFORMATION: TE Technical Support Centers

| | |
|-------------------|-----------------------|
| USA: | + 1 800 327 6996 |
| France: | + 33 380 583 200 |
| UK: | + 44 0870 870 7500 |
| Germany: | + 49 896 089 903 |
| Spain: | + 34 916 630 400 |
| Italy: | + 39 333 250 0915 |
| Benelux: | + 32 16 351 731 |
| Canada: | + 1 (905) 475-6222 |
| Mexico: | + 52 (0) 55-1106-0800 |
| Latin/S. America: | + 54 (0) 11-4733-2200 |
| China: | + 86 (0) 400-820-6015 |