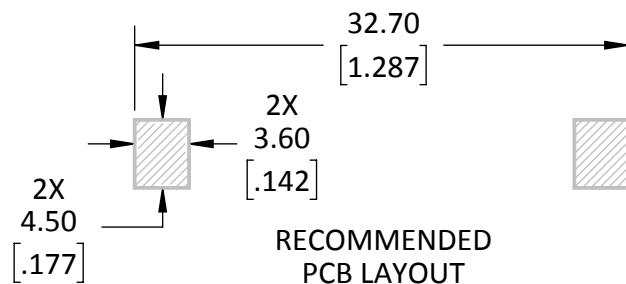


SECTION A-A



RECOMMENDED
PCB LAYOUT

NOTES: (UNLESS OTHERWISE SPECIFIED)

1. ALL DIMENSIONS ARE IN MILLIMETERS [IN].
2. DIMENSIONS APPLY AFTER FINISHING.
3. MANUFACTURE TO BE COMPLIANT WITH EU RoHS DIRECTIVE, USE MATERIALS THAT DO NOT CONTAIN REACH SUBSTANCES OF VERY HIGH CONCERN >1000ppm, AND USE DRC CONFLICT-FREE SOURCED MATERIALS.
4. ELECTRICAL SPECIFICATIONS ARE FOR LISTED FOR REFERENCE ONLY.
 1. CONTACT RESISTANCE: NTE 30mΩ
 2. INSULATION RESISTANCE: 1GΩ MAX
 3. DIELECTRIC RESISTANCE: 500VAC
5. MECHANICAL PROPERTIES
 1. MATERIAL: LPC, WHITE, UL94V-0
 2. OPERATING TEMPERATURE: -25° - +85°C
6. PACKAGE IN TAPE AND REEL IAW ASTM EIA-481-F
 1. PITCH: 20mm
 2. TAPE SIZE: 44mm
 3. EMBOSSED CARRIER

WARNING: THIS DRAWING CONTAINS PROPRIETARY INFORMATION THAT IS THE SOLE PROPERTY OF LINX TECHNOLOGIES, AND SHALL BE TREATED AS SUCH. NO DISCLOSURE OR REPRODUCTION OF THIS DOCUMENT IS PERMITTED, IN WHOLE OR IN PART, WITHOUT THE EXPRESS WRITTEN PERMISSION OF LINX TECHNOLOGIES OR ITS DESIGNATED AGENTS.

MATERIAL:	INTERPRET DIMENSIONS AND TOLERANCES PER ASME Y14.5.		PROJECTION:
LCP	X ±.1	ANGLES: ±1°	
CuSnP	.XX ±.01	SURFACE: √	
FINISH:	DRAWN: JHAGER	DT: 5/31/22	
WHITE	ENGR: SHAWNH	DT: 5/31/22	
Sn 100μ"			



TITLE:
**BATTERY HOLDER SURFACE MNT
SOLDER CR2032**

SIZE	DWG. NO.	REV
A	BAT-HLD-013-SMT-TR	A
SCALE: 2:1	DO NOT SCALE DRAWING	SHEET 1 OF 1