



Introducing Corcom SB Series High Performance B Series Power Line Filters

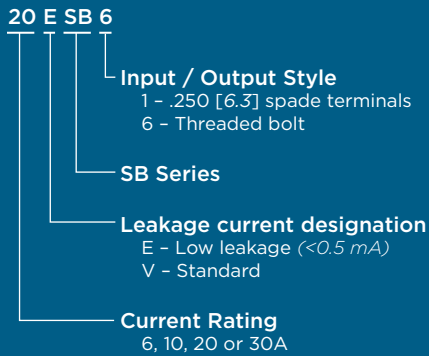
The Corcom SB power line filter series joins the Corcom product family of EMI/RFI filter products. The Corcom SB Series of AC/DC rated power line filters is an enhanced version of the popular Corcom B Series filter with improved common and differential mode performance. The compact height (1.53"/38.86 mm) of the Corcom SB Series makes these products optimal for space constrained applications. These filters provide significant differential mode performance ideal for industrial machinery equipment and are also suitable as a simple clean up filter within many types of electronic applications. Low leakage versions are available that meet current requirements of VDE portable equipment and UL544 non-patient medical equipment.



KEY FEATURES

- Compact size
- High differential mode performance
- Current range from 6 to 30A
- Rated for both AC and DC operation @ 250VAC/VDC
- UL Recognized, CSA Certified, and VDE Approved

ORDERING INFORMATION



STANDARDS AND SPECIFICATIONS

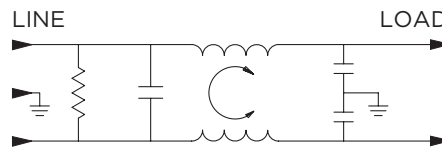


- UL Recognized
- CSA Certified
- VDE Approved

ELECTRICAL SPECIFICATIONS

Max. Leakage current each Line to Ground:		VSB Models	ESB Models
	@ 120 VAC 60 Hz		.75 mA
@ 250 VAC 50 Hz		1.25 mA	.36 mA
Rated Currents:	6, 10, 20 & 30A		
Rated Voltage (max):	250 VAC & 250 VDC		
Operating Frequency:	50/60 Hz		

ELECTRICAL SCHEMATIC



PRODUCT OFFERING

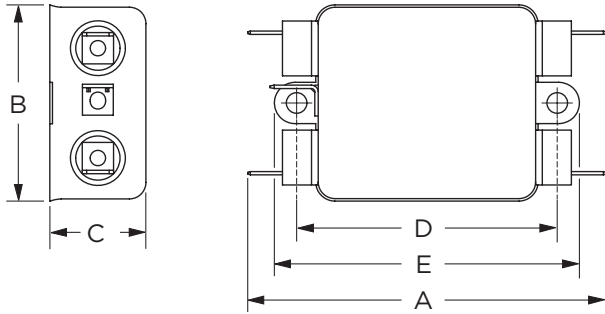
1-1609034-1:	6ESB1	1-1609034-2:	6VSB1
1-1609034-3:	10ESB1	1-1609034-5:	10VSB1
1-1609034-4:	10ESB6	1-1609034-6:	10VSB6
1-1609034-7:	20ESB1	1-1609034-9:	20VSB1
1-1609034-8:	20ESB6	2-1609034-0:	20VSB6
2-1609034-1:	30ESB6	2-1609034-2:	30VSB6

CASE DIMENSIONS

Part No.	A	B	C	D	E
	(max)	(max)	(max)	± .015 ± .38	(max)
6ESB1, 6VSB1	3.36	1.82	0.91	2.375	2.78
	85.34	46.23	23.11	60.325	70.61
10ESB1, 10VSB1	3.36	1.82	1.28	2.375	2.78
	85.34	46.23	32.51	60.325	70.61
10ESB6, 10VSB6	3.47	1.82	1.53	2.375	2.78
	88.14	46.23	38.86	60.325	70.61
20ESB1, 20VSB1	3.85	2.07	1.31	2.938	3.35
	97.79	52.58	33.27	74.625	85.09
20ESB6, 20VSB6	4	2.07	1.53	2.938	3.35
	101.6	52.58	38.86	74.625	85.09
30ESB6, 30VSB6	4.92	2.07	1.53	3.947	4.33
	124.97	52.58	38.86	100.254	109.98

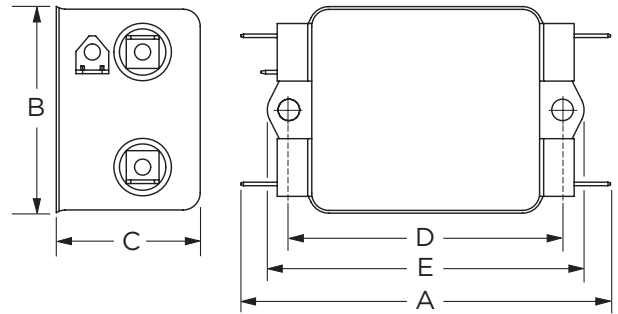
CASE STYLES

6ESB1 & 6VSB1



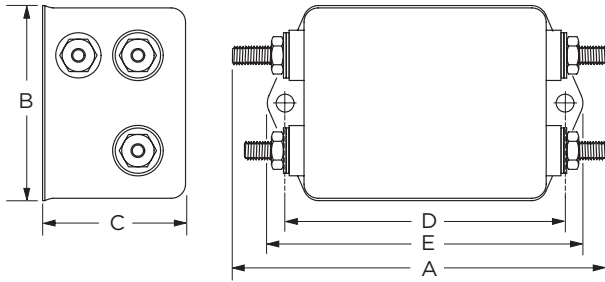
Typical Dimensions:
 Line/Load Terminals (4): .250 [6.3] with .07 [1.8] Dia. hole
 Ground Terminal (1): .250 [6.3] with .07 x .16 [1.8 x 3.8] slot
 Mounting Holes (2): .188 [4.75] Dia.

10ESB1, 10VSB1, 20ESB1 & 20VSB1



Typical Dimensions:
 Line/Load Terminals (4): .250 [6.3] with .07 [1.8] Dia. hole
 Ground Terminal (1): .250 [6.3] with .07 x .16 [1.8 x 3.8] slot
 Mounting Holes (2): .188 [4.75] Dia.

ESB6 & VSB6



Typical Dimensions:
 Terminals (5): 8-32, Torque 18 lbf-in. [2.03 N-m] max. ± 2 [.22]
 Mounting Holes (2): .188 [4.75] Dia.

PERFORMANCE DATA

Minimum Insertion Loss

Measured in closed 50 Ohm system

Common Mode / Asymmetrical (Line to Ground)

Part No.	Frequency — MHz										
	0.03	0.05	0.1	0.15	0.5	1	2	5	10	20	30
ESB Models											
6ESB1	3	8	13	17	31	37	40	47	50	58	62
10ESB1	3	9	15	19	31	39	41	44	47	54	51
10ESB6	3	9	14	18	31	39	41	44	47	54	54
20ESB1	3	7	13	15	30	35	37	39	40	46	40
20ESB6	3	7	13	16	30	35	39	40	44	58	46
30ESB6	3	7	13	17	30	34	37	40	42	49	58
VSB Models											
6VSB1	3	8	14	19	37	47	51	58	66	59	49
10VSB1	3	9	15	21	41	49	50	56	64	54	46
10VSB6	4	9	15	21	39	49	50	56	64	54	44
20VSB1	3	7	14	19	37	45	47	50	60	48	40
20VSB6	3	7	14	19	37	44	49	52	62	48	41
30VSB6	3	6	13	18	37	45	49	51	60	50	42

Differential Mode / Asymmetrical (Line to Line)

Part No.	Frequency — MHz											
	0.01	0.03	0.05	0.1	0.15	0.5	1	2	5	10	20	30
ESB Models												
6ESB1	5	14	20	25	29	41	49	47	50	60	74	72
10ESB1	5	15	20	26	29	41	47	50	54	64	74	74
10ESB6	5	14	20	25	29	41	47	48	50	60	62	64
20ESB1	5	15	21	26	29	41	45	48	54	63	70	66
20ESB6	5	15	21	26	29	41	44	48	54	63	70	66
30ESB6	5	14	20	25	29	40	46	50	50	58	70	70
VSB Models												
6VSB1	5	14	20	25	29	40	41	57	66	78	56	62
10VSB1	5	15	21	26	29	39	40	60	64	67	67	64
10VSB6	5	14	20	25	29	39	40	60	64	68	70	64
20VSB1	5	15	20	26	29	40	42	60	68	70	70	67
20VSB6	5	15	21	26	29	39	38	58	68	70	70	66
30VSB6	5	15	20	25	29	39	39	56	62	70	70	66

FOR MORE INFORMATION

corcom.com

TE Technical Support Center

Internet: te.com/help
USA: +1 (800) 522-6752
Canada: +1 (905) 475-6222
Mexico: +52 (0) 55-1106-0800
Latin/S. America: +54 (0) 11-4733-2200
Germany: +49 (0) 6251-133-1999
UK: +44 (0) 800-267666
France: +33 (0) 1-3420-8686
Netherlands: +31 (0) 73-6246-999
China: +86 (0) 400-820-6015

Part numbers in this brochure are RoHS Compliant*, unless marked otherwise.

*as defined www.te.com/leadfree

te.com

© 2011 Tyco Electronics Corporation, a TE Connectivity Ltd. company. All Rights Reserved.

8-1773460-8 CIS JG 05/2011

Corcom, TE Connectivity, TE connectivity (logo) and TE (logo) are trademarks. Other logos, product and/or company names might be trademarks of their respective owners.

While TE has made every reasonable effort to ensure the accuracy of the information in this brochure, TE does not guarantee that it is error-free, nor does TE make any other representation, warranty or guarantee that the information is accurate, correct, reliable or current. TE reserves the right to make any adjustments to the information contained herein at any time without notice. TE expressly disclaims all implied warranties regarding the information contained herein, including, but not limited to, any implied warranties of merchantability or fitness for a particular purpose. The dimensions in this catalog are for reference purposes only and are subject to change without notice. Specifications are subject to change without notice. Consult TE for the latest dimensions and design specifications.

