



Introducing Underground branch connectors, ESU type

These connectors are designed for use in LV underground branch joints

DESCRIPTION

- . No need to cut the main cable
- . Stripping of main and tap cable
- . Body made from high strength copper corrosion resistant alloy, tin plated
- . Accept circular and sectorial conductors

STANDARDS AND SPECIFICATIONS

Compliance with NF C 63061 standard.

KEY FEATURES and BENEFITS

Range from

- 25 to 240 mm² on main cable
- 10 to 150 mm² on tap cable
- Aluminium to aluminium
- Aluminium to copper
- Copper to copper

An insulated solid or stranded plastic cover is available to insulate every connector inside the resin joint

Versatile, range taking

Allows live line work

Spring effect ensuring high contact performance

Reliable

PRODUCT PHOTOS



Plastic cover



ESU application



Plastic cover application



While TE Connectivity (TE) has made every reasonable effort to ensure the accuracy of the information in this catalog, TE does not guarantee that it is error-free, nor does TE make any other representation, warranty or guarantee that the information is accurate, correct, reliable or current. TE reserves the right to make any adjustments to the information contained herein at any time without notice. TE expressly disclaims all implied warranties regarding the information contained herein, including, but not limited to, any implied warranties of merchantability or fitness for a particular purpose. The dimensions in this catalog for reference purposes only and are subject to change without notice. Specifications are subject to change without notice. Consult TE for the latest dimensions and design specifications. AMP, Raychem, SIMEL, TE Connectivity and TE Connectivity (logo) are trademarks.

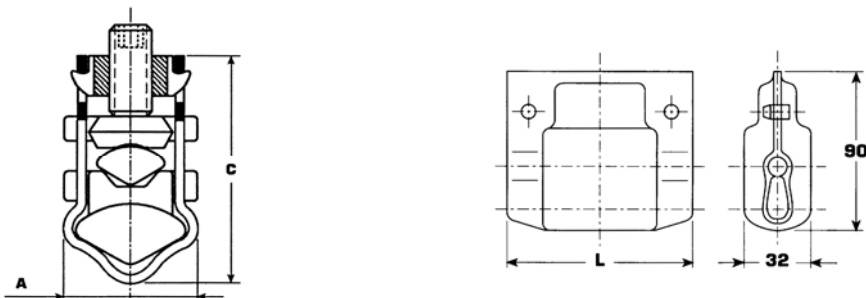
Tyco Electronics Simel S.A.S. – Energy

1, Rue Paul Martin 21220 Gevrey-Chambertin Tel: 00 (33) 3 80 58 32 00 Fax: 00 (33) 3 80 34 10 15

Energy.te.com

SIM049 Rev1 Energy PDF Jan 2012

PRODUCT DIMENSIONS



Designation	TCPN	Cross section (mm ²)		Dimensions (mm)			Weight (g)	Standard Packaging
		Main	Tap	A	L	C		
ESU 95	710127-1	25 to 95	10 to 35	25	32,5	43	105	50
ESU 95 + plastic cover	711724-1						155	50
ESU 150	709542-2	95 to 240	16 to 70	30	38	49	180	6
ESU 240	709541-1	95 to 240	95 to 150	30	79	49	235	6
ESU 240 + plastic cover	711726-1						330	25
ESU 240 SIB	709774-1	150 to 240	95 to 150	30	158	68	425	1

Plastic cover reference	Description	TCPN	Dimension L (mm)	Standard Packaging
ESU 95 and 150	ESU gousset 95/150	716462-1	80	50
ESU 240	ESU gousset 240	716461-1	120	25



While TE Connectivity (TE) has made every reasonable effort to ensure the accuracy of the information in this catalog, TE does not guarantee that it is error-free, nor does TE make any other representation, warranty or guarantee that the information is accurate, correct, reliable or current. TE reserves the right to make any adjustments to the information contained herein at any time without notice. TE expressly disclaims all implied warranties regarding the information contained herein, including, but not limited to, any implied warranties of merchantability or fitness for a particular purpose. The dimensions in this catalog for reference purposes only and are subject to change without notice. Specifications are subject to change without notice. Consult TE for the latest dimensions and design specifications. AMP, Raychem, SIMEL, TE Connectivity and TE Connectivity (logo) are trademarks.

Tyco Electronics Simel S.A.S. – Energy

1, Rue Paul Martin 21220 Gevrey-Chambertin Tel: 00 (33) 3 80 58 32 00 Fax: 00 (33) 3 80 34 10 15

Energy.te.com

SIM049 Rev1 Energy PDF Jan 2012