

2-968814-2 ✓ ACTIVE

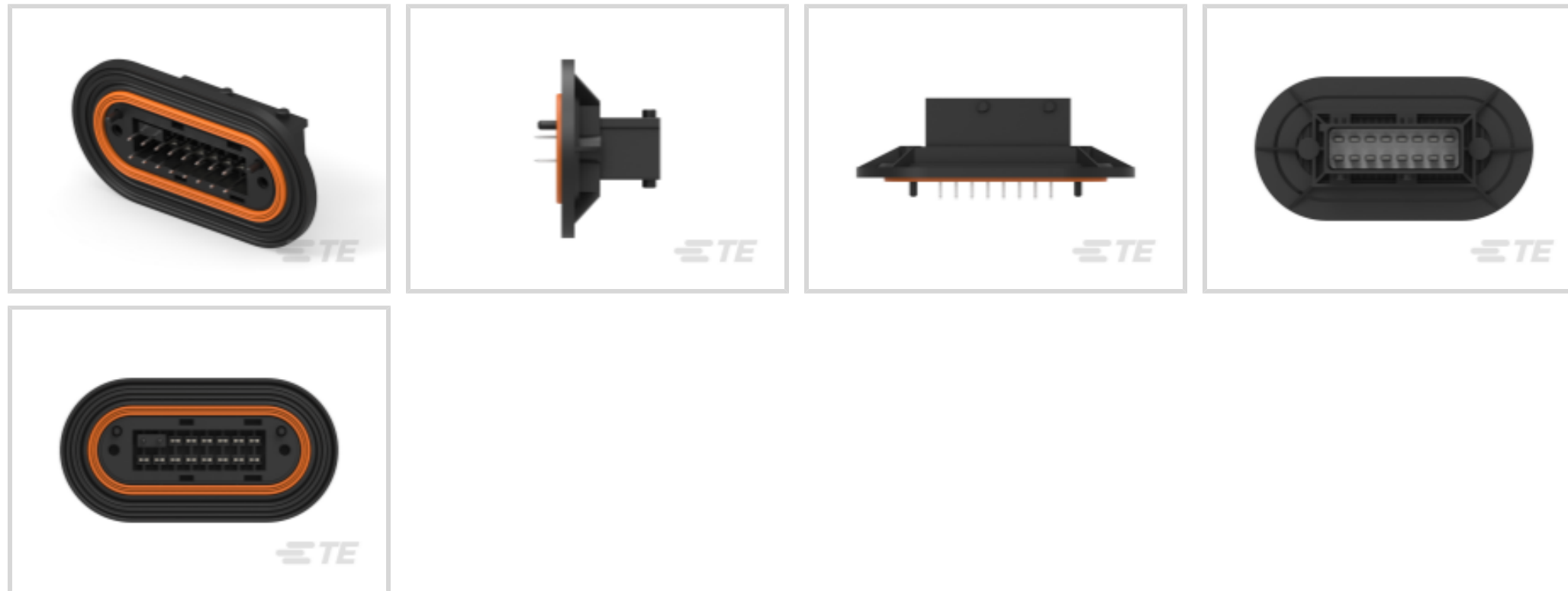
TE Internal #: 2-968814-2

PCB Mount Header, Vertical, Wire-to-Board, 16 Position, 5 mm [.196 in] Centerline, Fully Shrouded, Silver (Ag), Through Hole - Solder, Sealable

[View on TE.com >](#)



Connectors > PCB Connectors > PCB Headers & Receptacles > Low & Medium Power Header



Connector System: **Wire-to-Board**

Number of Positions: **16**

Centerline (Pitch): **5 mm [.196 in]**

Sealable: **Yes**

PCB Mount Orientation: **Vertical**

[All Low & Medium Power Header \(143\)](#)

Features

Product Type Features

Mixed & Hybrid Header	No
PCB Connector Assembly Type	PCB Mount Header
Header Type	Fully Shrouded
Connector System	Wire-to-Board
Sealable	Yes
Connector & Contact Terminates To	Printed Circuit Board

Configuration Features

Number of Positions	16
PCB Mount Orientation	Vertical
Number of Rows	2

Body Features

Primary Product Color	Black
-----------------------	-------

Contact Features



Contact Type	Tab
Mating Tab Width	3 mm [.118 in]
Contact Mating Area Plating Material	Silver (Ag)

Termination Features

Termination Method to Printed Circuit Board	Through Hole - Solder
---	-----------------------

Mechanical Attachment

Mating Alignment	With
PCB Mount Alignment	With
PCB Mount Retention	With
Connector Mounting Type	Board Mount

Housing Features

Centerline (Pitch)	5 mm [.196 in]
--------------------	----------------

Operation/Application

Circuit Application	Signal
---------------------	--------

Packaging Features

Packaging Type	Carton
Packaging Quantity	48

Other

Interface Number	966168
------------------	--------

Product Compliance

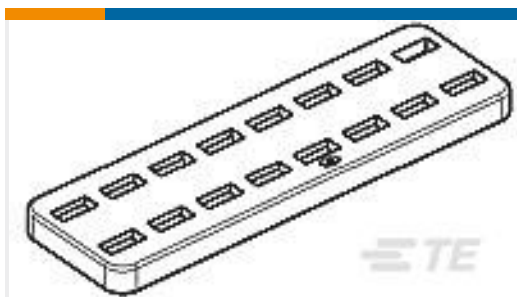
[For compliance documentation, visit the product page on TE.com>](#)

EU RoHS Directive 2011/65/EU	Compliant
EU ELV Directive 2000/53/EC	Compliant
China RoHS 2 Directive MIIT Order No 32, 2016	No Restricted Materials Above Threshold
EU REACH Regulation (EC) No. 1907/2006	Current ECHA Candidate List: JUNE 2023 (235) Candidate List Declared Against: JUN 2018 (191) Does not contain REACH SVHC
Halogen Content	Low Halogen - Br, Cl, F, I < 900 ppm per homogenous material. Also BFR/CFR/PVC Free
Solder Process Capability	Not applicable for solder process capability

Product Compliance Disclaimer

This information is provided based on reasonable inquiry of our suppliers and represents our current actual knowledge based on the information they provided. This information is subject to change. The part numbers that TE has identified as EU RoHS compliant have a maximum concentration of 0.1% by weight in homogenous materials for lead, hexavalent chromium, mercury, PBB, PBDE, DBP, BBP, DEHP, DIBP, and 0.01% for cadmium, or qualify for an exemption to these limits as defined in the Annexes of Directive 2011/65/EU (RoHS2). Finished electrical and electronic equipment products will be CE marked as required by Directive 2011/65/EU. Components may not be CE marked. Additionally, the part numbers that TE has identified as EU ELV compliant have a maximum concentration of 0.1% by weight in homogenous materials for lead, hexavalent chromium, and mercury, and 0.01% for cadmium, or qualify for an exemption to these limits as defined in the Annexes of Directive 2000/53/EC (ELV). Regarding the REACH Regulation, the information TE provides on SVHC in articles for this part number is based on the latest European Chemicals Agency (ECHA) 'Guidance on requirements for substances in articles' posted at this URL: <https://echa.europa.eu/guidance-documents/guidance-on-reach>

Compatible Parts



TE Part # 963216-1
DICHTUNG

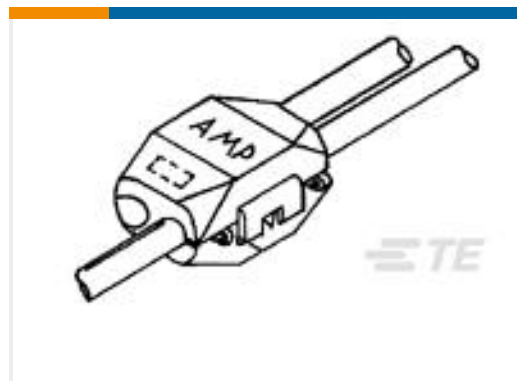
Customers Also Bought



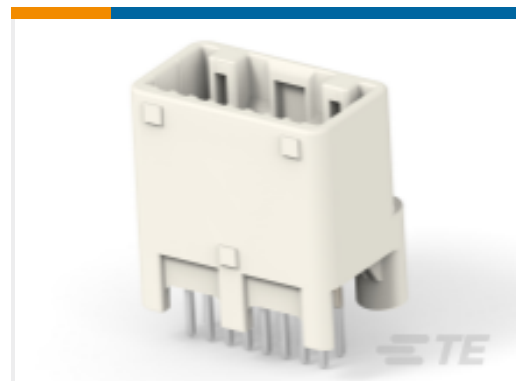
TE Part #927773-3
TIMER, RECEPTACLE AND TAB



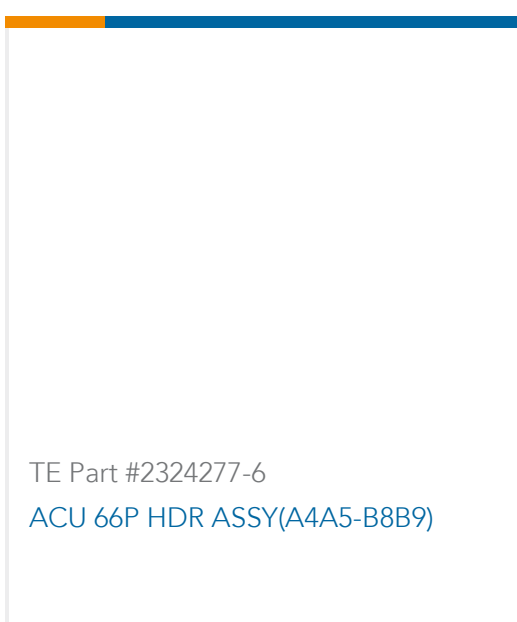
TE Part #282438-1
MINI MIC SRS REC CONT HYBRD



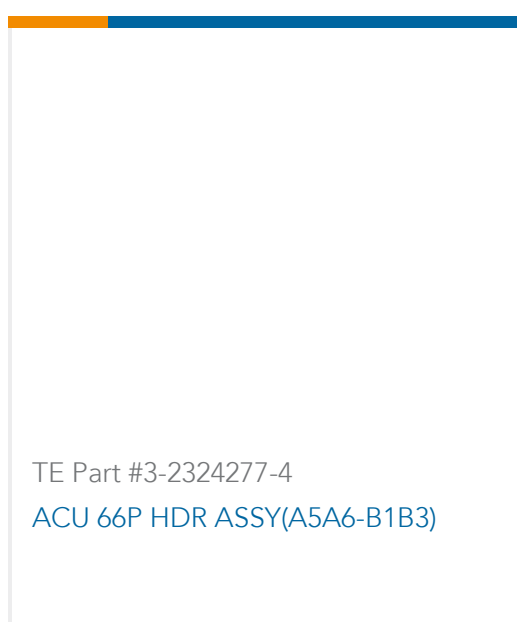
TE Part #880458-1
ELETRO TAP ASSY



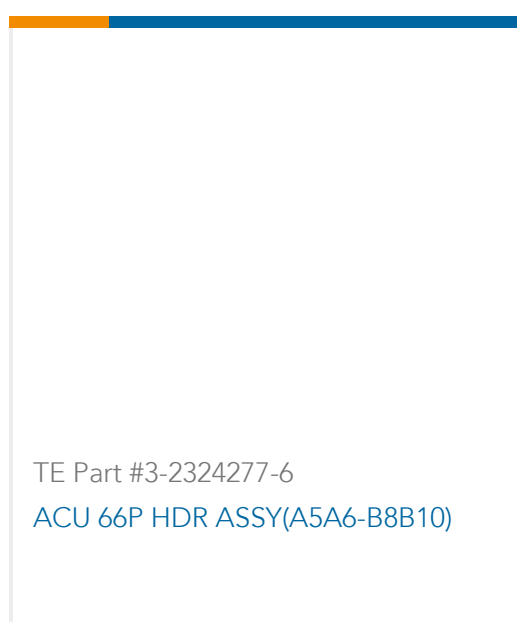
TE Part #2383522-1
16POS,TAB0.64X0.64,HDR ASSY,
180DEG



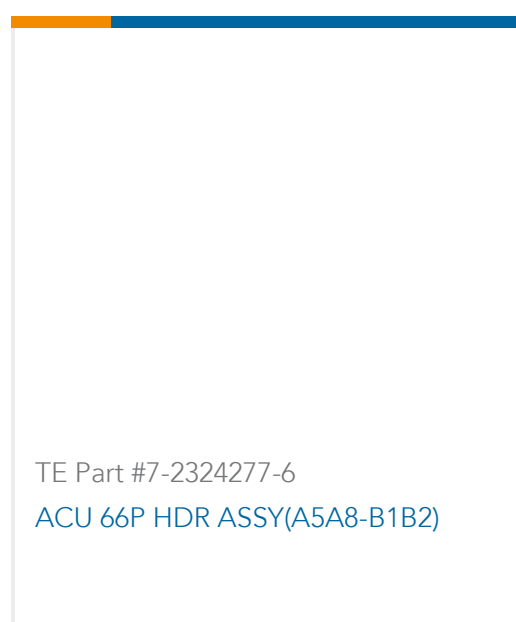
TE Part #2324277-6
ACU 66P HDR ASSY(A4A5-B8B9)



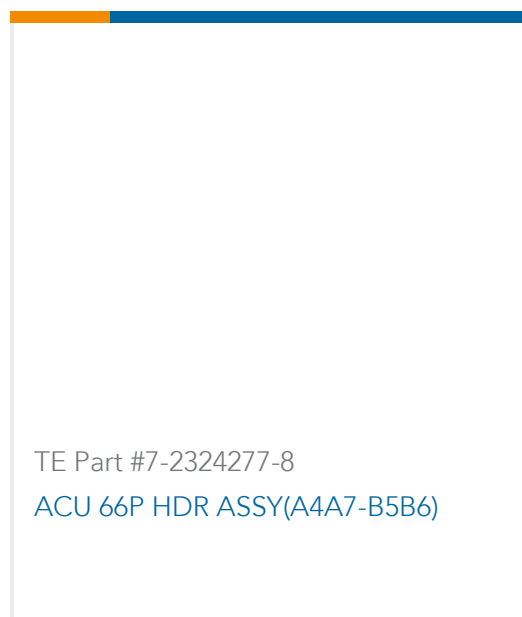
TE Part #3-2324277-4
ACU 66P HDR ASSY(A5A6-B1B3)



TE Part #3-2324277-6
ACU 66P HDR ASSY(A5A6-B8B10)



TE Part #7-2324277-6
ACU 66P HDR ASSY(A5A8-B1B2)



Documents

Product Drawings

[MESSERLEISTE3,0 16P](#)

English

CAD Files

Customer View Model

[ENG_CVM_CVM_2-968814-2_A.2d_dxf.zip](#)

English

[3D PDF](#)

3D

Customer View Model

[ENG_CVM_CVM_2-968814-2_A.3d_igs.zip](#)

English

Customer View Model

[ENG_CVM_CVM_2-968814-2_A.3d_stp.zip](#)

English

By downloading the CAD file I accept and agree to the [Terms and Conditions](#) of use.