

M12 POWER L-CODE PANEL MOUNT PCB CONNECTORS

TE Connectivity (TE)'s new M12 Power L-Code connectors are designed for Panel Mount PCB applications and provide a compact solution for high-power connections in automation devices. An extension of TE's M12 product portfolio, they handle up to 16A per pin – the highest in TE's M12 family – delivering four times the power of standard M12 connectors while providing reliable and efficient power supply. M12 Power L-Coded connectors take up to 40% less space than 7/8" connectors traditionally used for high-power connections, allowing for a more compact build of a high-power solutions for automation devices.

TE's new M12 Power L-Code connectors are IP67 rated, protected from dust and resist temporary submersion in water at depths of up to 1 meter for 30 minutes. The power connectors are available through TE's global distribution network, which provides customers with short lead-times and fast responses for technical support. M12 Power L-Code connectors, an extension of the current M12 IEC standard, have been selected by PROFIBUS & PROFINET International as the standard for 24-volt power supply systems used in PROFINET devices.

BENEFITS

- Provides four times the power of standard M12 connectors for compact high-power solution.
- PNO approved for immediate implementation into PROFINET standard and embracing miniaturization of distribution boxes.
- Ideal for factory automation and use in harsh and wet industrial environments.

M12 Power L-Code Panel Mount PCB Connectors

APPLICATIONS

- Motors and Drives
- Industrial Machinery and Devices
- Robotics
- Industrial Lighting
- Distribution boxes

FEATURES

- Handles currents: up to 16A per Pin
- Small form-factor using up to 40% less space than 7/8" connectors
- IP67 Sealed Interface when mated

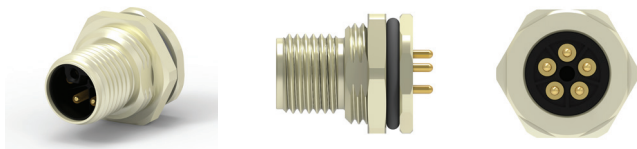
ELECTRICAL

- Rated Voltage: 63V (AC/DC)
- Rated Current: 16A per Pin

PRODUCT OFFERINGS

M12 L-coding Straight Solder PCB

Part Number	Poles	Mounting	Type
T4140L12031-000	2	Rear	Male
T4140L12041-000	3	Rear	Male
T4140L12051-000	4	Rear	Male



MECHANICAL

- IP67 (When fully mated)
- Operating Temperature: -40°C to +85°C

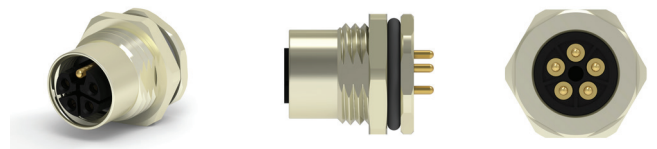
MATERIALS

- M12 Male Body: Copper Alloy
- M12 Male Housing: LCP
- Contact: Copper Alloy

STANDARDS & SPECIFICATIONS

- Product Specification: [108-137350](#)
- Application Specification: [114-137144](#)
- UL_E28476

Part Number	Poles	Mounting	Type
T4141L12031-000	2	Rear	Female
T4141L12041-000	3	Rear	Female
T4141L12051-000	4	Rear	Female



te.com

© 2018 TE Connectivity. All Rights Reserved.

TE Connectivity, and TE Connectivity (logo) are trademarks. All other logos, products and/or company names referred to herein might be trademarks of their respective owners.

While TE has made every reasonable effort to ensure the accuracy of the information in this brochure, TE does not guarantee that it is error-free, nor does TE make any other representation, warranty or guarantee that the information is accurate, correct, reliable or current. TE reserves the right to make any adjustments to the information contained herein at any time without notice. TE expressly disclaims all implied warranties regarding the information contained herein, including, but not limited to, any implied warranties of merchantability or fitness for a particular purpose. The dimensions in this catalog are for reference purposes only and are subject to change without notice. Specifications are subject to change without notice. Consult TE for the latest dimensions and design specifications.

1-1773966-3 SL 01/19 Tangence