

P	LTR	DESCRIPTION	DATE	DWN	APVD
	A	INITIAL RELEASE	25APR2023	BDA	MB

VERSAFLEX/VERSAFLEX-FR

VERSAFLEX EXPANDABLE SLEEVING PRODUCTS (FR AND NON-FR) WHICH CONSIST OF BRAIDED POLYESTER MONOFILAMENTS.

PRODUCT DIMENSIONS

VERSAFLEX/VERSAFLEX-FR (IMPERIAL)						
NOMINAL SIZE	EXPANDABLE RANGE*		MONOFILAMENT DIAMETER		MONOFILAMENTS PER CARRIER	NUMBER OF CARRIERS
	mm.	in.	mm.	in.		
1/8	2.00-6.00	0.079-0.236	0.25 ± 0.02	0.010±0.001	3	16
1/4	3.00-10.00	0.118-0.394	0.25 ± 0.02	0.010±0.001	3	24
3/8	5.00-16.00	0.197-0.630	0.25 ± 0.02	0.010±0.001	3	40
1/2	6.00-19.00	0.236-0.748	0.25 ± 0.02	0.010±0.001	3	48
3/4	13.00-32.00	0.512-1.260	0.25 ± 0.02	0.010±0.001	3	64
1-1/4	19.00-45.00	0.748-1.772	0.25 ± 0.02	0.010±0.001	3	96
1-3/4	32.00-70.00	1.260-2.756	0.25 ± 0.02	0.010±0.001	4	120
2	38.00-76.00	1.496-2.992	0.25 ± 0.02	0.010±0.001	5	120

VERSAFLEX (METRIC)						
NOMINAL SIZE	EXPANDABLE RANGE*		MONOFILAMENT DIAMETER		MONOFILAMENTS PER CARRIER	NUMBER OF CARRIERS
	mm.	in.	mm.	in.		
3	1.00-5.00	0.039-0.197	0.22 ± 0.02	0.009±0.001	3	20
4	2.00-7.00	0.079-0.276	0.22 ± 0.02	0.009±0.001	3	24
5	3.00-9.00	0.118-0.354	0.22 ± 0.02	0.009±0.001	3	28
6	4.00-12.00	0.157-0.472	0.22 ± 0.02	0.009±0.001	3	32
8	5.00-12.00	0.197-0.472	0.22 ± 0.02	0.009±0.001	3	40
10	7.00-15.00	0.276-0.591	0.22 ± 0.02	0.009±0.001	3	48
12	8.00-17.00	0.315-0.669	0.22 ± 0.02	0.009±0.001	3	56
15	10.00-20.00	0.394-0.787	0.22 ± 0.02	0.009±0.001	3	64
20	14.00-26.00	0.551-1.024	0.22 ± 0.02	0.009±0.001	3	72
25	18.00-34.00	0.709-1.339	0.22 ± 0.02	0.009±0.001	3	96
30	20.00-40.00	0.787-1.575	0.22 ± 0.02	0.009±0.001	3	120
40	30.00-50.00	1.181-1.969	0.22 ± 0.02	0.009±0.001	4	120
50	40.00-60.00	1.575-2.362	0.22 ± 0.02	0.009±0.001	5	120

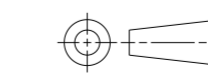
PRODUCT INFORMATION

- 1 FLAME RETARDANT - VERSAFLEX-FR SIZES
- 2 NON-FLAME RETARDANT - VERSAFLEX SIZES
- 3 COLOR
VERSAFLEX- BLACK OR GREY
VERSAFLEX-FR- BLACK WITH A WHITE TRACER
- 4 TUBING OF SPECIAL EXPANDED OR RECOVERED DIMENSIONS MAY BE SUPPLIED AS SPECIFIED IN THE CONTRACT OR ORDER PRODUCT AVAILABLE IN DIFFERENT CUT LENGTHS

STANDARD CUTTING TOLERANCES(mm)	
CUT LENGTH	TOLERANCE
UPTO TO 9.90mm	±1.50mm
10mm TO 24.90mm	±1.50mm
25mm TO 54.90mm	±1.50mm
55mm TO 99.90mm	±3.00mm
100mm TO 149.90mm	±4.00mm
150mm TO 499.90mm	±5.00mm
500mm AND GREATER	±25.40mm

THIS DRAWING IS A CONTROLLED DOCUMENT.

DIMENSIONS:
mm(Inches)



MATERIAL
SEE NOTE

TOLERANCES UNLESS OTHERWISE SPECIFIED:
0 PLC ±0.1
1 PLC ±0.1
2 PLC ±0.01
3 PLC ±0.001
4 PLC ±0.0001
ANGLES ±
FINISH -

DWN	25APR2023
CHK	25APR2023
APVD	25APR2023
NAME	BASAVARAJA D A SELVAPANDIAN B MAYO BAKARE
PRODUCT SPEC	108-120004
APPLICATION SPEC	-
WEIGHT	-
CUSTOMER DRAWING	-



NAME VERSAFLEX EXPANDABLE BRAIDED SLEEVING (INCORPORATING VERSAFLEX AND VERSAFLEX-FR)			
SIZE	CAGE CODE	DRAWING NO	RESTRICTED TO
A2	-	VERSAFLEX-VERSAFLEX-FR	-
SCALE	NTS	SHEET	OF
		1	1
REV	A		